

Rugged Tablet

EM-I16H

User's Manual

Thank you for your choosing the new Tablet PC.

This guide serves to enable users to get to know and familiar with our product as soon as possible. Here we have made a brief introduction to the key layout and definitions in figures and words.

Attention:

- This user guide is based on Windows 10 home edition
- This user guide is an introduction for full function tablet. Your device may not have all functions.
- This user guider applies to the following models: EM-I16H/EM-I16HH
- The illustrations in this manual may differ from the actual product.

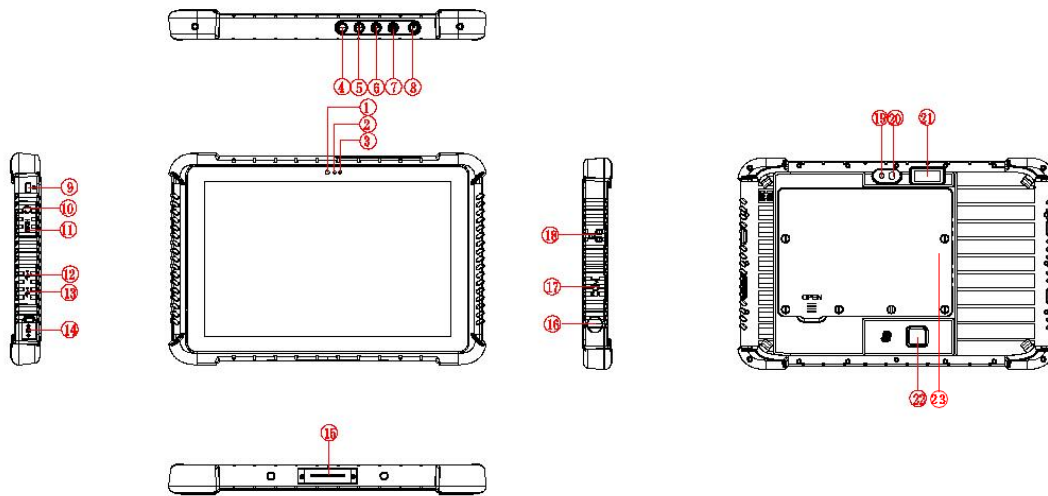
Contents

I . Use of the previous note	4
II . Key Layout and Definitions	5
VI. Introduction to Desktop.....	6
1. Windows 10 start image	6
2. Image slide applications	7
3. Introduction to app Interface	9
4. Charm menu column	11
5. Multitasking operating interface	13
IV. Basic Operations.....	13
1.Sleep, restart and power off	13
V.Windows operating instructions of special function module	12
VI. Use warnings.....	21

I . Use of the previous note

1. With the wrong type of battery replacement will be explosive danger, be sure to use the original battery.
2. The company shall not take any responsibility for the loss or removal of the information in the tablet, which is caused by the operation, maintenance or other accidents of the non-normal operation of the software and hardware.
3. Please backup your important information at any time.
4. Please do not disassemble the tablet; otherwise it will lose the right to guarantee.
5. Adapter description: INPUT: 100-240V~50/50Hz 0.5A OUTPUT: 5V DC 3A

II . Key Layout and Definitions



① **Front camera:** camera, video

③ **Light sensor:** Perception of external pipeline strength, electrical signal to CPU

⑤ ④ **voice sound +/- voice sound-:** increase/reduce the volume

⑥ **Custom buttons:** for customer defined function keys

⑦ **Power button:** to start or close touch screen panel. You can also let the computer

⑧ **Scan code key:** the device equipped with scan code module can be controlled by this button scan code

⑨ **Lock hole:** used to lock the limited use of equipment

⑩ **Earphone Jack:** the jack support outputs the audio signal to a loudspeaker or Headset

⑪ **HDMI interface:** High-Definition Multimedia, Interface, high definition multimedia interface

⑫ **Micro USB 2.0:**data transmission by inserting the micro USB 2.0 interface device

⑬ **U handicap:**data transmission by inserting the micro USB 2.0 interface device

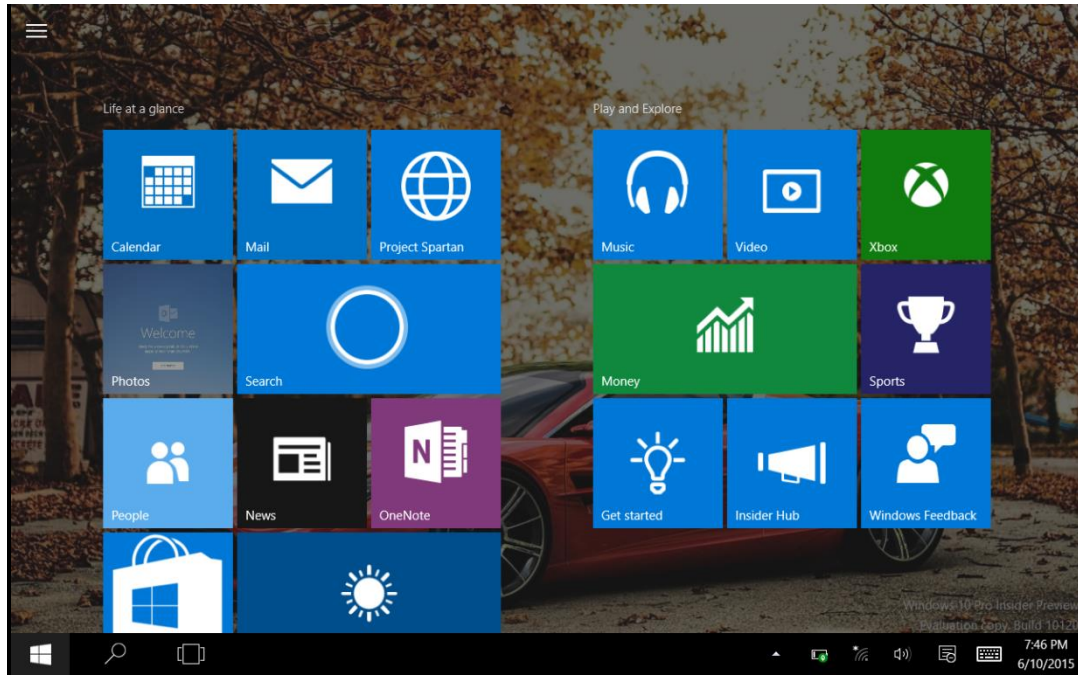
- ⑭ **Charging interface:** charging the tablet via DC adapter
- ⑮ **POGO PIN:** Device for connecting base
- ⑯ **Aircraft plug connection:** a device for connecting an air connector
- ⑰ **RS232 serial interface:** used to connect the device with RS232 serial interface
- ⑱ **Ethernet interface:** used to connect Ethernet connections
- ㉑ **Rear camera:** camera, video
- ㉒ **One dimensional / two-dimensional code scanning head:** the same press the scan button, activate the scanning head to get the barcode image information
- ㉓ **Fingerprint input sensor:** used in the past fingerprint information
- ㉔ **SIM Card and TF Card:** SIM card and TF card are hidden in the battery compartment. Before use, the battery compartment needs to be opened to insert sim card and TF card. The maximum supporting capacity of TF card is 128G

VI. Introduction to Desktop

1. Windows 10 start image

Windows 10 start image: On the start screen, you can see many programs fixed in the image. These application programs are displayed in the form of “magnet”. As long as you click them, you can easily visit them.

You need to log on your Microsoft account before the application program completely runs.



2. Image slide applications

Slide to right

Slide to left



Slide to the right from the left side of the screen to scan the application program in running.

Slide to the left from the right side of the screen to setting Charm menu column.

Slide downward



In start screen, slide from the top of the screen to view application programs

Slide with finger

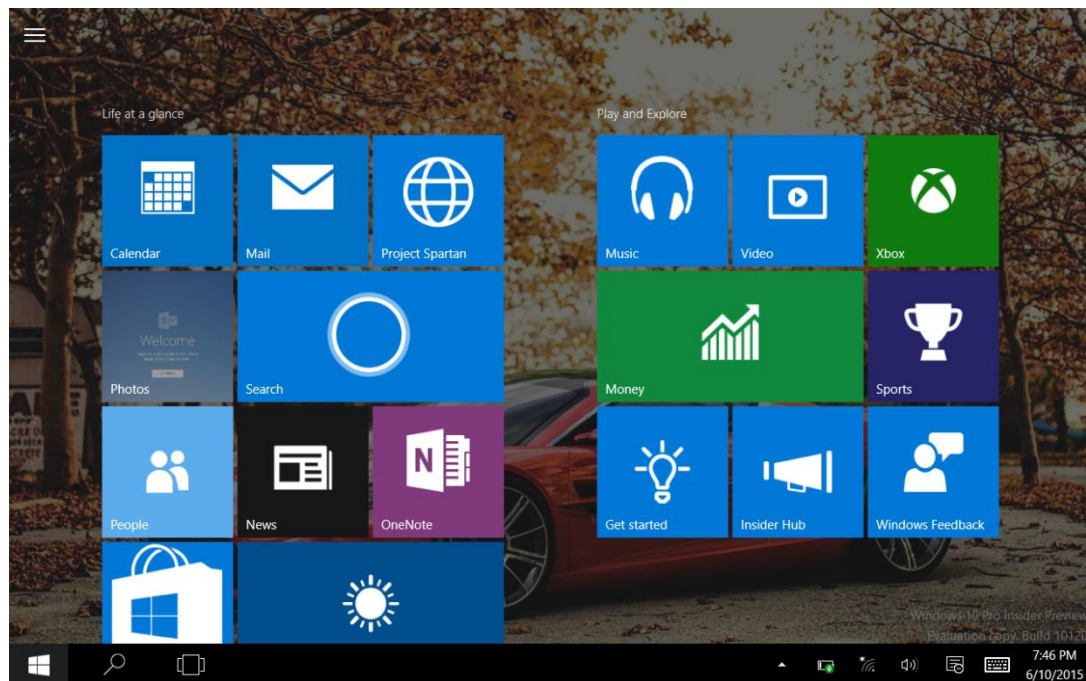


In start screen, slide finger up and down to move the image.

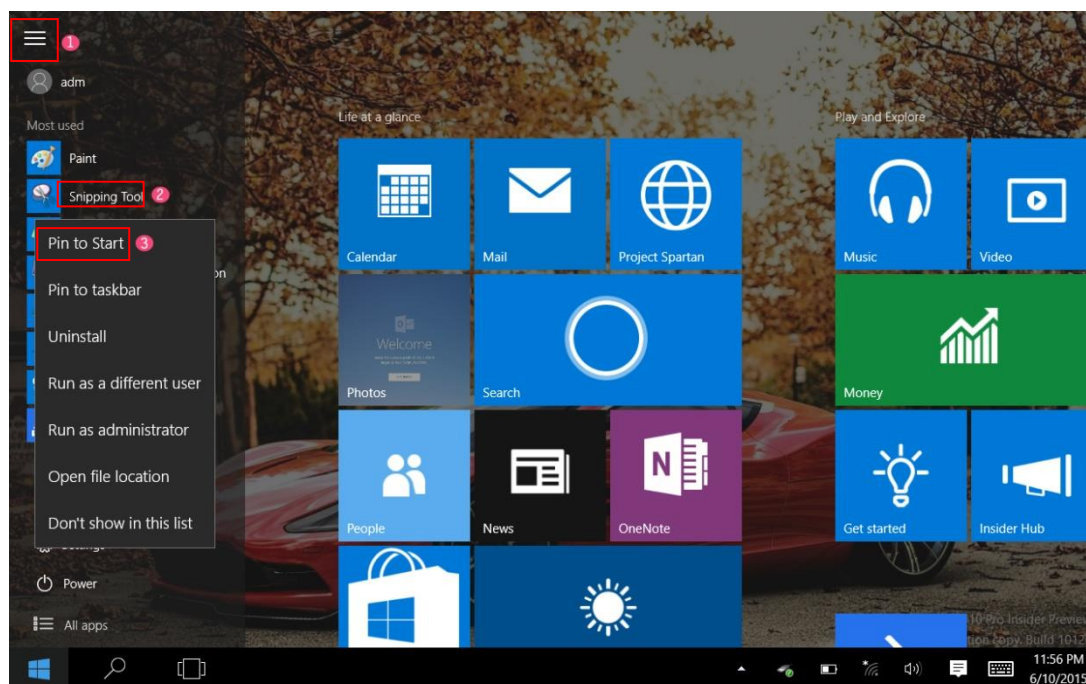
3. Introduction to app Interface

Besides the application programs already fixed on the start screen, you can also start other

application programs in all application programs, such as other software application programs attached to the Tablet PC.

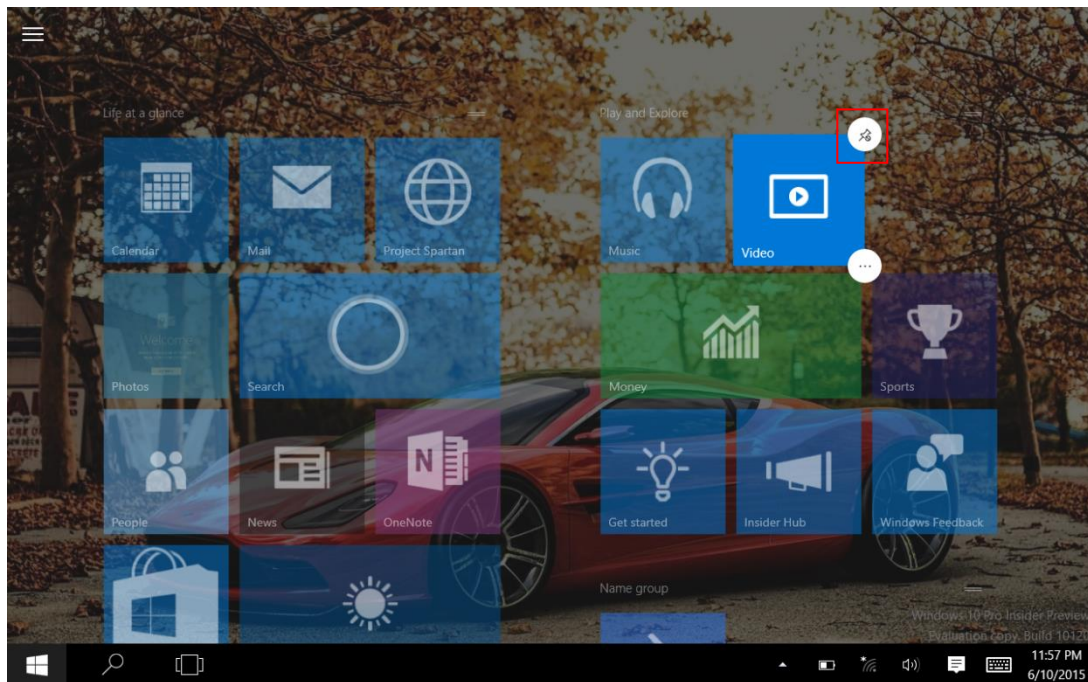


If you want to fix more application programs on the start interface, see the operation in the figure below, (1) Click the properties icon (2) press and hold the application program magnet for about one second and then let go (3) Click the Pin to start



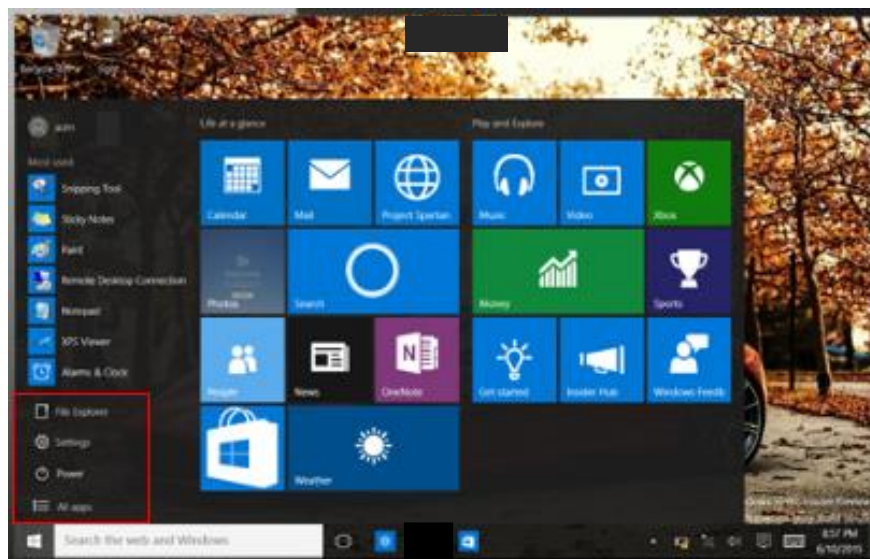
Conversely, if you want to cancel or delete a certain application in the start screen, (1) lightly touch, press and hold the application program magnet for about one second and then let it go and

run, and select



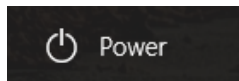
4. Charm menu column

Slide it to the left from the right side of the screen to start Charm menu column, including: Start, Device, Setup, Share, and Search Program.

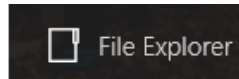


Slide it to the left from the right side of the screen to start Charm menu column, Usually: File

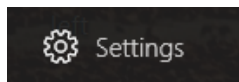
Explorer,Settings,Power, and All apps



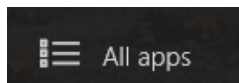
Can Sleep/Shut down/Restart the Tablet PC



Can let you search the files and application programs in the Tablet PC.



Can let you set up the Table PC.



Can scan more apps

Search menu



Device Menu

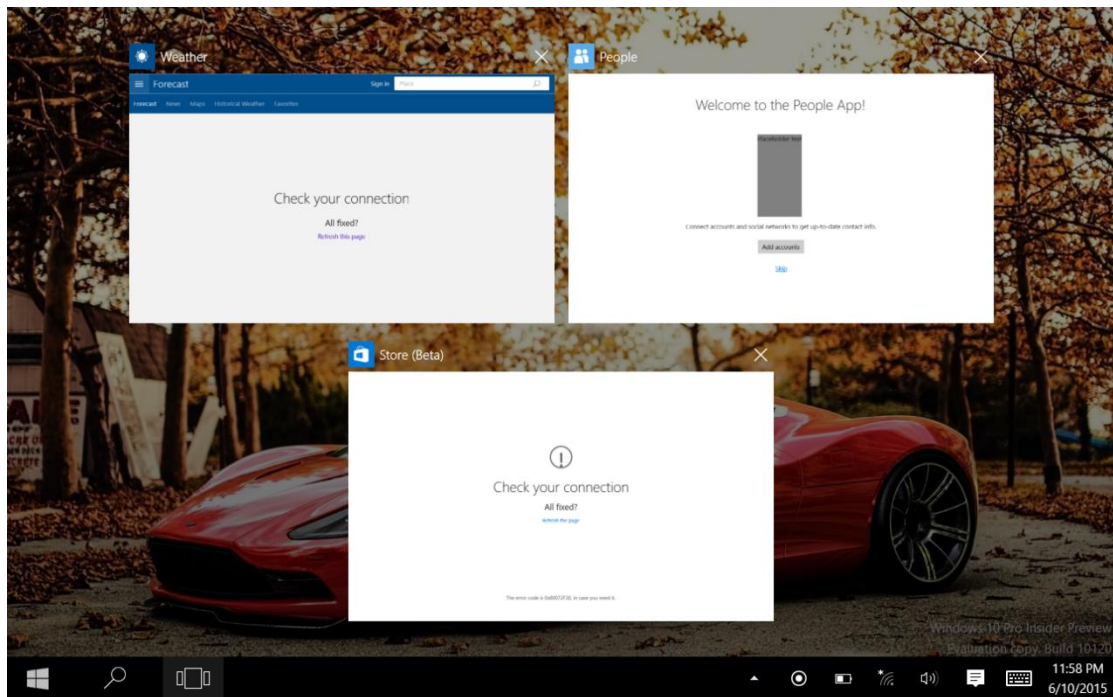


Set up Menu



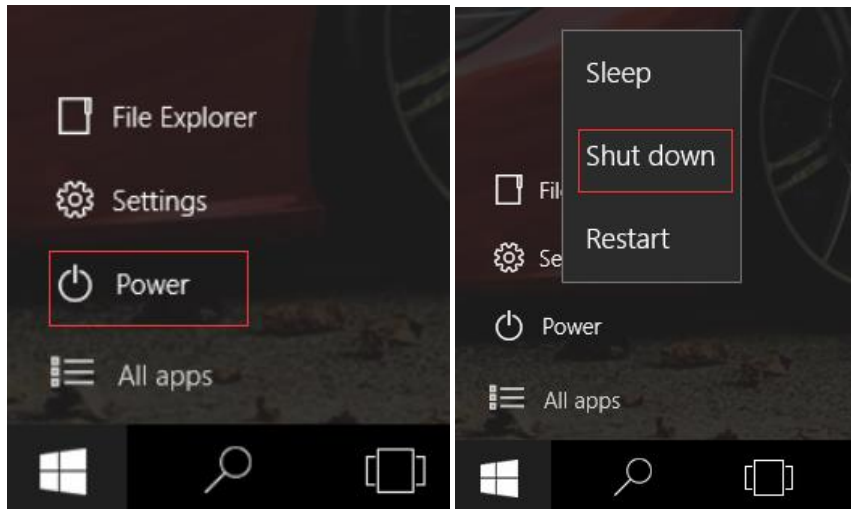
5. Multitasking operating interface

slide it right from the left side of the screen, Let go when Can see the running applications. We can enter the application, also can be deleted.



IV. Basic Operations

1. Sleep, restart and power off



V. Windows operating instructions of special function module

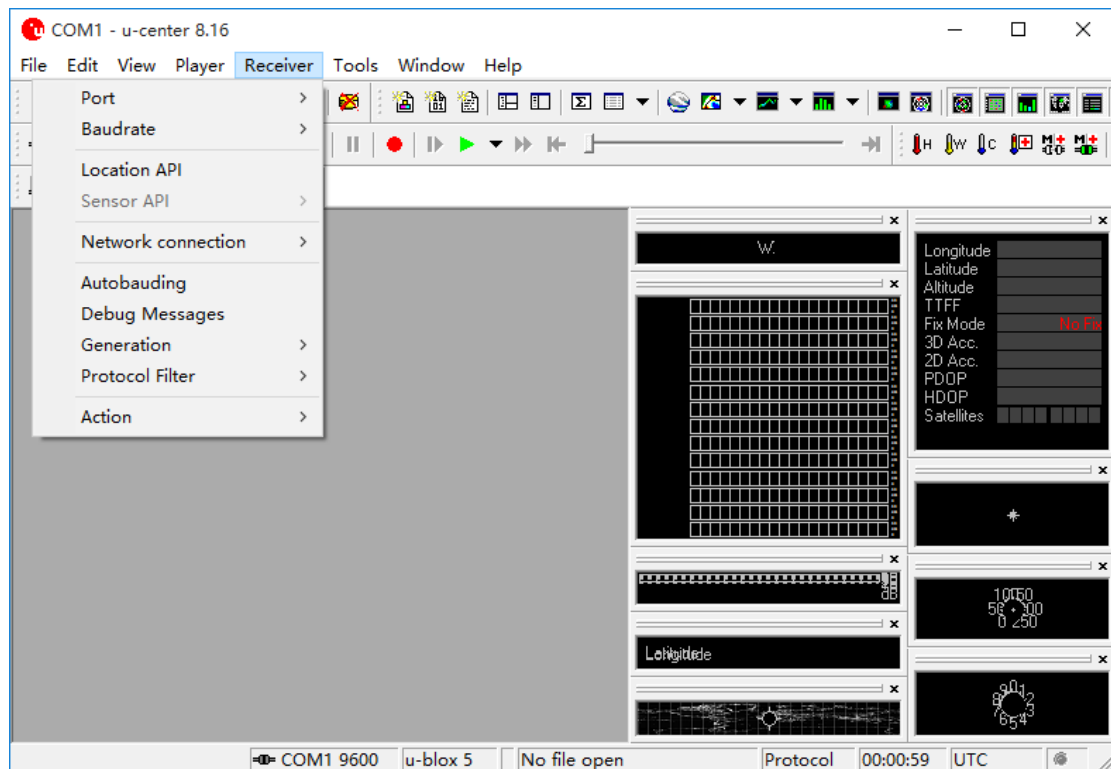
1、U-blox GPS:

(1).Copy u-blox test tool to desktop.

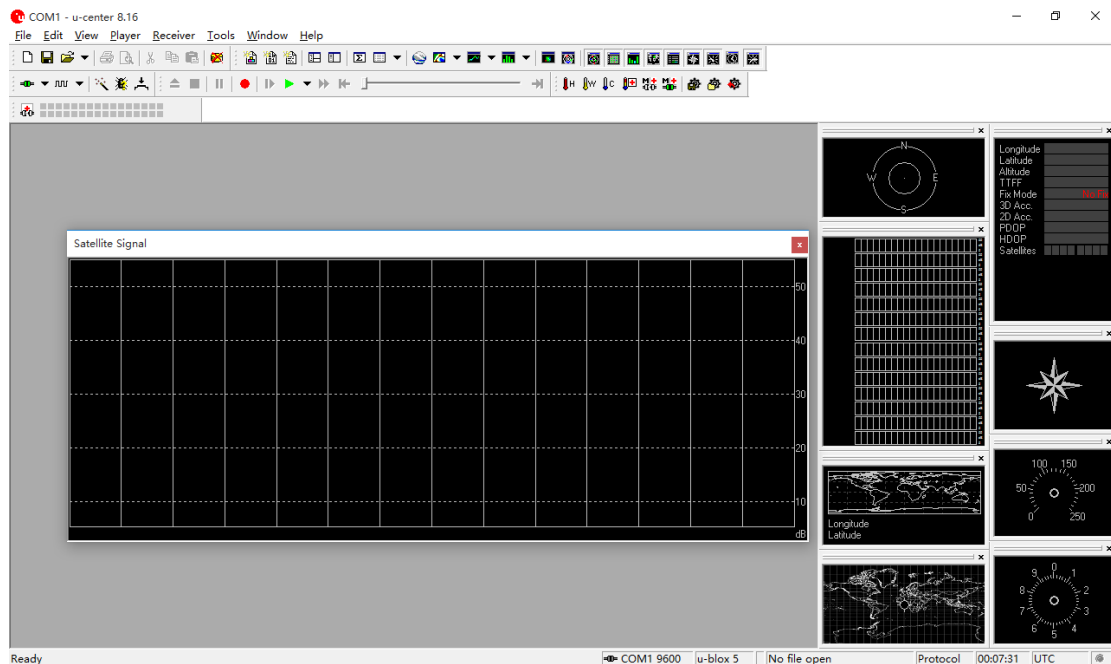


(2).Open the software, chose receiver, and chose port again, click COM1.

(3).In the same way for receiver, chose Baudrate, click 9600.



(4).As below picture, double click the satellites model picture to enlarge.



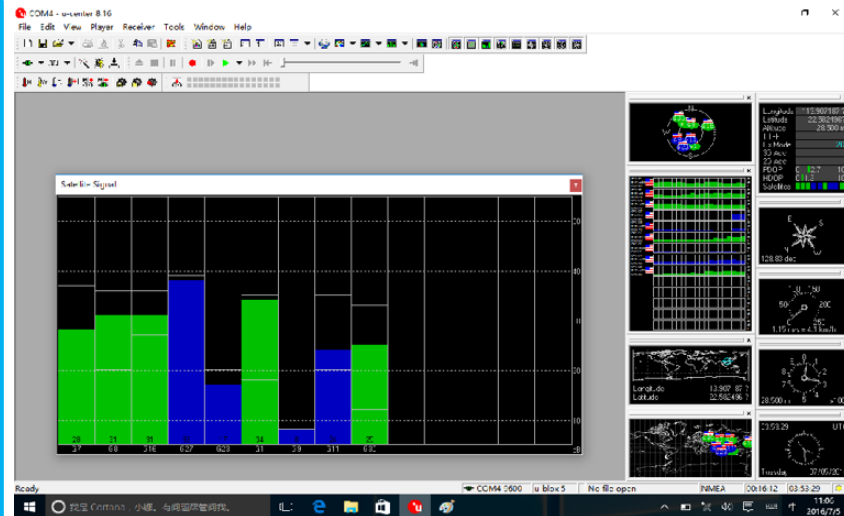
(5).The blue colors are the satellites that searched, green color are

effective satellites. The numbers in the right are signal value.

Standard:

Environment: in open field, no metal in around, no obstacles. Sunny weather, no clouds covering.

Condition: can see satellites above 12 pieces, effective satellites above 10 pieces. Have 2-3 pieces satellites value reach to above 40 dB.



VI. Android operating instructions of special function module

note: please allow installation of unknow source before software installation



check: setting—security- unknown source

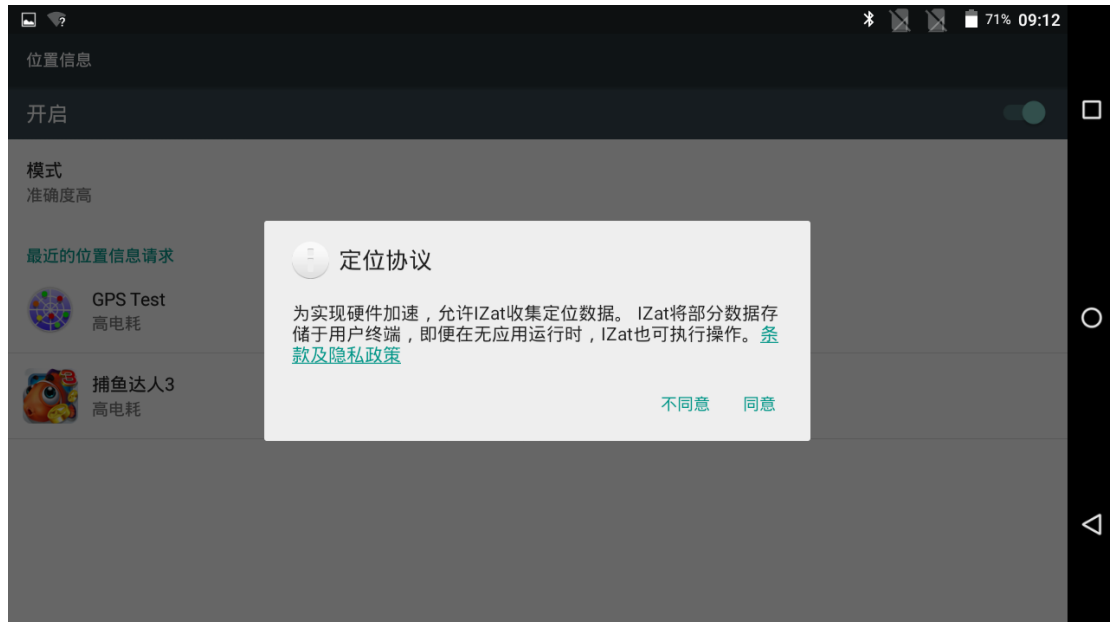
1. GPS Module operation

- (1) . Copy GPS testing software on the local
- (2) . Click install, and open

(3) . See the GPS status shows off on the top left corner. Click off and enter into set interface



(4) . open the switch on the top right corner, and chose agree again

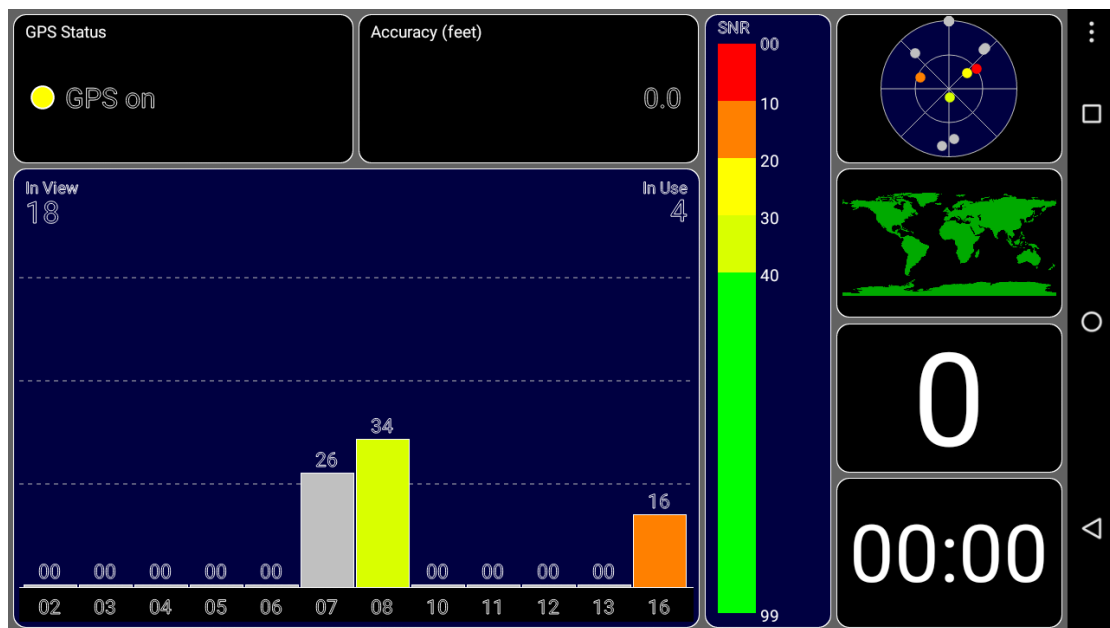


(5) . Chose mode, click device only



(6). Finally return GPS main interface. Can see GPS Status shows on

(7). In open field and waiting for 1min and check if there is a satellite

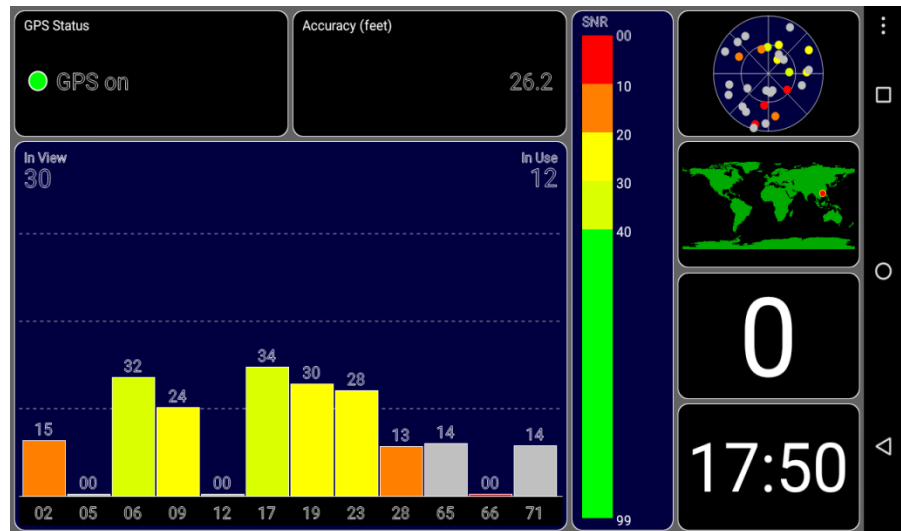


(8). OK! wait for 3 mins and check if satellites value, quantity meet standard

Standard:

Enviroment: in open field,
no metal in around, no
obstacles. Sunny weather,
no clouds covering

Condition: can see
satellites above 12 pieces,
effective satellites above
10 pieces. Have 2-3 pieces
satellites value reach to
above 40 dB



FCC Statement

Changes or modifications not expressly approved by the party responsible for compliance could void the user's authority to operate the equipment.

This equipment has been tested and found to comply with the limits for a Class B digital device, pursuant to Part 15 of the FCC Rules. These limits are designed to provide reasonable protection against harmful interference in a residential installation. This equipment generates uses and can radiate radio frequency energy and, if not installed and used in accordance with the instructions, may cause harmful interference to radio communications. However, there is no guarantee that interference will not occur in a particular installation. If this equipment does cause harmful interference to radio or television reception, which can be determined by turning the equipment off and on, the user is encouraged to try to correct the interference by one or more of the following measures:

- Reorient or relocate the receiving antenna.
- Increase the separation between the equipment and receiver.
- Connect the equipment into an outlet on a circuit different from that to which the receiver is connected.
- Consult the dealer or an experienced radio/TV technician for help

This device complies with part 15 of the FCC rules. Operation is subject to the following two conditions (1) this device may not cause harmful interference, and (2) this device must accept any interference received, including interference that may cause undesired operation.

This equipment complies with FCC radiation exposure limits set forth for an uncontrolled environment.

The SAR limit of USA (FCC) is 1.6 W/kg averaged over one gram of tissue. Device types Rugged Tablet (EM-I16H) (FCC ID: 2A37Q-EM-I16H) has also been tested against this SAR limit. The highest SAR value reported under this standard during product certification for use at the body is 0.663W/kg and Simultaneous Transmission is 0.883W/kg. This device was tested for typical body-worn operations with the back of the handset kept 0mm from the body. To maintain compliance with FCC RF exposure requirements, use accessories that maintain a 0mm separation distance between the user's body and the back of the handset. The use of belt clips, holsters and similar accessories should not contain metallic components in its assembly. The use of accessories that do not satisfy these requirements may not comply with FCC RF exposure requirements, and should be avoided.