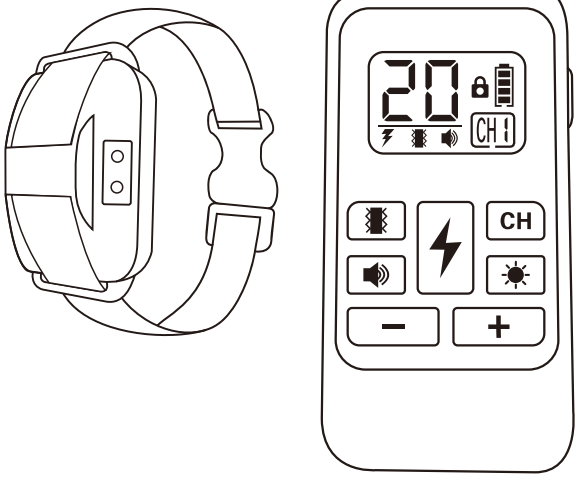
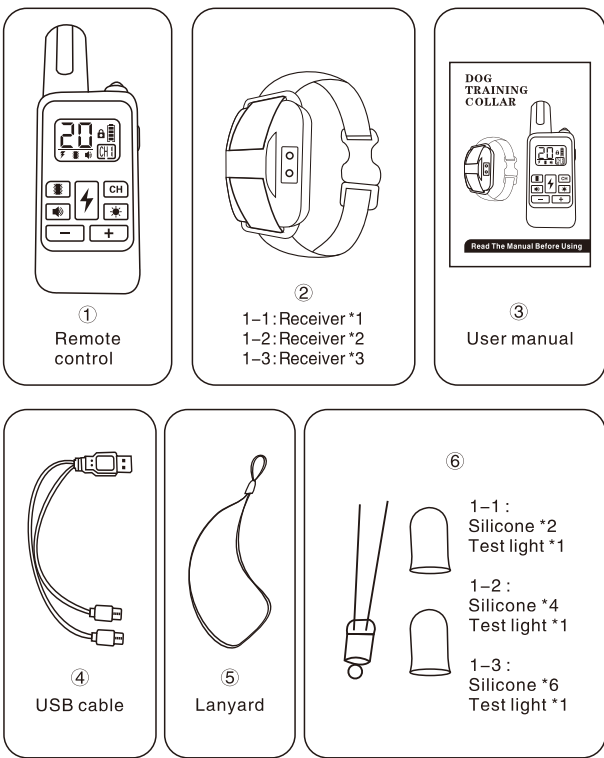


DOG TRAINING COLLAR



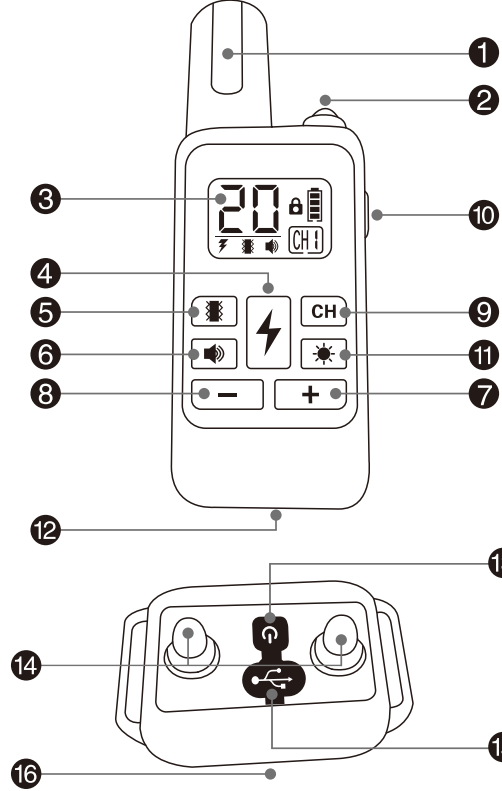
Read The Manual Before Using

Package content



- 1 -

Product Overview



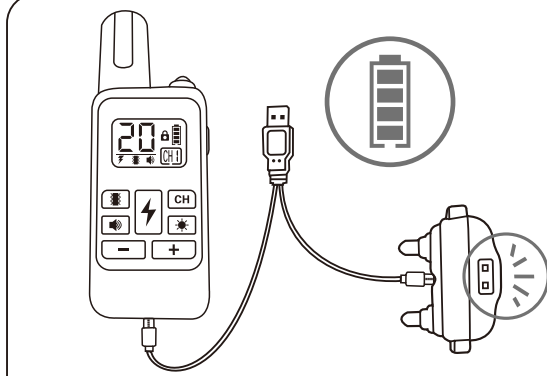
- 2 -

Key Definition

1. Antenna : transmit the signal strongly.
2. LED light : Press to light it, press again to be off.
3. LCD screen : Show the modes, levels and channels.
4. Shock button : Press to choose Shock mode, the screen show , press + or - button to adjust the levels from 0 -- 20, press Shock button again to make the Receiver shock.
5. Vibration button : Press to choose Vibration mode,the screen show , press + or - button to adjust the levels from 0 -- 20, press Shock button again to make the Receiver vibrate.
6. Sound button : Press to choose Sound mode, the screen show , don't need to adjust the levels, just press to make the receiver sound Bee--.
7. + button : press + to increase the training levels.
8. - button : press - to reduce the training levels.
9. Channel button : choose your training channel between CH1/CH2/CH3 by press this button.
10. Switch ON/OFF of the remote.
11. Light button : Press to light the LED of the Remote, press again, the LED will be off; If you press this button 2 seconds, the white LED on the Receiver will be on, press 2 seconds again, the White LED will be off, if you don't press it again, the White LED will be off automatically after 5 minutes.
12. Charging hole of the Remote.
13. Power button of the receiver : press to turn on the Receiver, press again to turn off it.
14. Shock static electrode : Conduct the safe static; To install the rubber cap, reach to pet's skin.
15. Charging hole of the Receiver.
16. Indicator light of the receiver: the light will be on when press the shock/vibration/sound button; When charging, it flash.

- 3 -

Charging prior to use

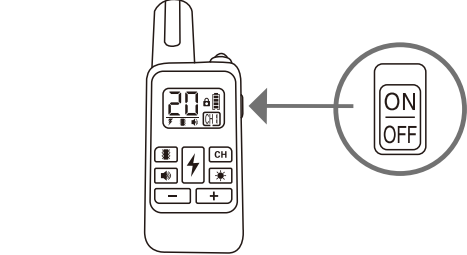


Notes:

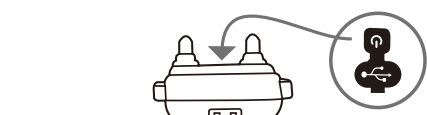
1. The battery icon on the display will flash while the Remote control is charging. The battery icon will stop flashing and reflect a full status when completely charged. The battery icon on the display will indicate a space status if the Remote control runs out of power.
2. The Receiver's LED status light will light up and flash in a breathing light while charging; After completely charged, the LED status light will cease flashing and remain on. When the Receiver is charging, it goes into sleep mode, which means it can't receive signals and can't be controlled by the Remote control. The LED status light will blink every second when the Receiver is low.
3. Make sure the charging port is dry before charging the Receiver.

- 4 -

Product switching on/off



1. To switch the Remote control on, toggle the on/off button on the Remote control to the unlocked position; To switch the Remote control off, flip the on/off button to the locked position.
2. The display backlight will stay on for 10 seconds after the Remote control is switched on; If no further activity is performed, the backlight will switch off. To switch on the backlight, press any button on the Remote control.
3. If there is no additional operation, the LCD display will switch off after 30 seconds and can be switched back on by pressing any button on the Remote control.

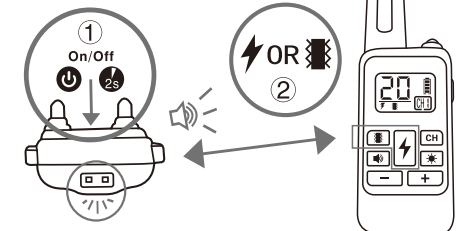


1. Press the Receiver's power switch button, the Receiver is switched on, the LED status light will flash once, while the Receiver makes a beep sound; Press the Receiver's power switch button again, the Receiver is switched off, the LED status light will flash again, while the Receiver makes two beep sound. 2. The LED status light will flash every 7 seconds when the Receiver is switched on, indicating that it is in working condition and ready to receive signals from the Remote control. 3. If the Receiver does not receive an operational signal for 5 minutes, it will enter standby mode, which may be accessed by pressing the shock button/vibrate button/beep button on the Remote control.

- 5 -

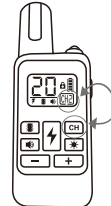
Pairing the Remote control and the Receiver

You can skip this step as the product is already matched up in the factory. (The paired channel is CH1)



1. Turn on the Remote control and choose a channel by press the CH button;
2. Turn on the Receiver and press the power button of the Receiver by 2 seconds, you hear a beep sound, and the Receiver's LED status light is flashing;
3. Press the vibrate button/shock button/beep button of the Remote control within 10 seconds after the beep sound, hearing a beep sound again that means the pairing successful.

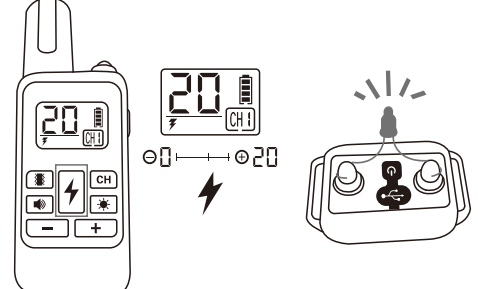
Pairing additional Receivers



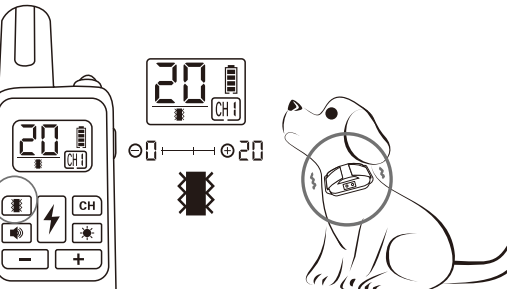
You can pick a separate pairing channel for pairing an additional Receiver or two, which is done in the same steps as above.

- 6 -

Test training mode



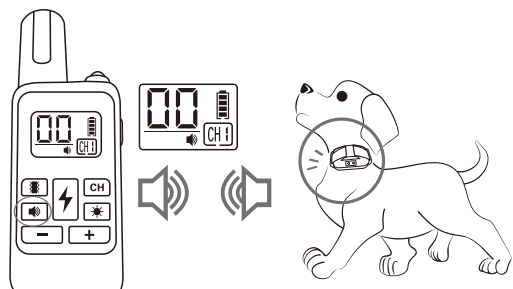
1. Test the electric shock function: Connect the test light to the two static electrodes of the Receiver, press the shock button of the Remote control (ensure the intensity level is more than 0) and the test light will light up.



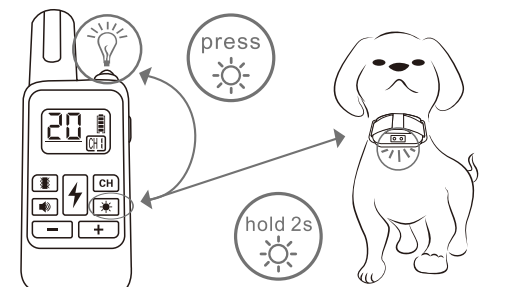
2. Test the vibration function: Press the vibrate button of the Remote control (ensure the intensity level is more than 0) and the Receiver will vibrate.

- 7 -

Test training mode



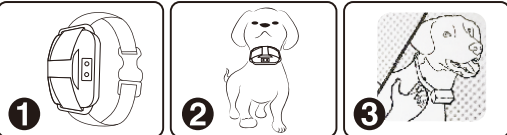
3. Test the beep function: The Receiver will beep if you press the beep button of the Remote control (no need to adjust the intensity level for this operation, simply 0 is displayed).



4. Test the LED lights function: Press the light button of the Remote control and the Torch LED on top of the Remote control will light up. Press and hold the light button on the Remote control for 2 seconds and the LED status light on the Receiver will light up.

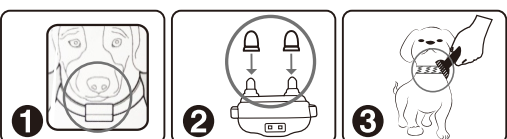
- 8 -

Wearing the Receiver collar



1. Thread the collar back through to the buckle and tighten the collar.
2. Place the Receiver collar around the dog's neck.
3. Tighten as tightly as you can fit through one fingertip.

If your dog isn't responding to the electric shock, consider these solutions.



1. If the dog's hair is too long, it can be ruffled to the sides so that the Receiver's static electrodes can reach the dog's skin.
2. Extended silicone caps can also be fitted if the dog's hair is too long.
3. Finally, directly shaving the dog's neck just before putting on the Receiver will allow the static electrodes to reach the dog's skin.

- 9 -

Finding the most appropriate training level for your dog

1. Follow these steps to smoothly start training your dog with the tone button :
 - Spend 10~15 minutes per day for 2~3 days helping your dog understand the tone.
 - Associate the tone with reward and praise (some also use the tone as a warning).
 - Push the tone button for 2 seconds.
 - Reward your dog with verbal praise when you release.
 - Allow 2~5 seconds before you repeat the process.

Quick Tip : Vary the rewards while training for the tone function. As soon as your dog starts to anticipate a reward with the tone, you've succeeded in this phase.

2. How to find the best Shock Level :**Very important :** Always begin with the lowest intensity level of electric shock, gradually raise the intensity level, follow these steps to find the optimum level :
 - Adjust the intensity level starting with level 1 on the LCD display on the Remote control, then press the shock button to observe how your dog reacts.
 - Gradually increase the intensity level of the electric shock until your dog responds to the shock. If you do not notice any response from your dog, you can increase the shock intensity level again.
 - Observe and record your dog's reactions at all times, as well as the shock's intensity level; Interact with your dog to determine the optimal training level.

- Quick Tip :**
- ★ Toggling the ON/OFF button of the Remote Control to the locked position, that's supposed to turn the Remote Control off to prevent misoperation.

- 10 -

Frequently Asked Questions (FAQs)

Q: When I press the Remote control button, my pet does not react.

- A:**
1. Ensure the Receiver is turned on.
 2. It's possible that a low battery in the Remote control and Receiver is causing the Remote control distance to be lowered when you first use it.
 3. The Remote control distance can be affected by a variety of factors such as topography, weather, vegetation, and the transmission of other radio equipment.
 4. Increase the electric shock or vibration's intensity level.
 5. Ensure that the Receiver's static electrodes are close to the dog's skin.
 6. **The receiver will not respond to the operational signals from the Remote control.**

- A:**
1. Check to see if the Receiver and Remote control are properly paired.
 2. Check the Remote control's display for the channel icon to determine whether it is chosen on the receiver's paired channel.
 3. Make sure that the Remote control and Receiver are both switched on. If this is not feasible, finish the pairing by going to the "Pairing the Remote control and Receiver" page.

Q: What should the duration of each dog training session be?

A: 10~15 minutes.

Q: What should I do if the dog training collar doesn't work?

- A:**
1. Check the power level of the Remote control and Receiver, then recharge it if it is low.
 2. In vibrate or shock mode. Check the intensity level and ensure that the level is over 0.
 3. Check if the Receiver is enabled, please press the power switch button to activate it.
 4. Check the channel, press the CH button to turn it back on if you have picked another channel.
 5. Re-pairing the Remote control and Receiver.

- 11 -

Important Security Information

This is a security warning symbol that generally serves to alert you to the possibility of injury. Please read the following security information carefully to prevent any potential dangers.



- Do not use this product if your dog is aggressive or exhibits aggressive behaviour frequently. Aggressive dogs can cause serious injury or even death to their owners and others.

- Please follow the manufacturer's directions while using the product. We are not liable for any damages or injuries resulting from incorrect use.

- It is forbidden to use the product in the presence of open flames or fragile objects.

- It is forbidden to use the product in extremely hot (above 40 degrees Celsius) or extremely cold (below 0 degrees Celsius) environments.

- Do not charge this product with a charger of more than 5 volts.

- This product is not a toy and should be kept out of the reach of children.

- Please unplug the product from the power supply if it will not be used for an extended period of time.

- When the product stops working effectively due to a drop, damage, outside usage, or water infiltration, do not use it. The product should be fixed by the manufacturer or its after-sales service to avoid injury.

- During dog training, safety is of utmost importance. Please keep yourself and your dog in a safe range during dog training to avoid injuring others. Make sure that the leash is strong enough and of the right length to keep the dog within a safe range at all times and that you can pull the dog if it runs off unexpectedly.

- 12 -

Important Security Information



Because the electrostatic current generated when the product is shocked is very low, only 0.01 amps, the electronic dog trainer products are highly safe and will not burn the skin of the dog's neck. Ulcers are frequently caused by bacterial infection, thus it's critical to wear the collar appropriately. Wearing the collar too long or too tight can cause discomfort for the dog's neck, as well as skin damage and infection. Please ensure that the collar strap is worn properly and sensibly. Please use the electric shock function of the product wisely, train your dog with patience, take more care of your pet and use electric shock carefully.

Your dog's skin may be damaged if you use the product incorrectly. Please take the following steps to guarantee your dog's safety and comfort:

- Only correct and educate one negative habit at a time; If you train too many items at once, your dog will turn resistant to training.
- Start with the vibration function instead of using electric shocks on the dog.
- Always keep an eye on the dog's reaction and make sure the training isn't too strenuous.
- The dog trainer collar should not be worn for more than 12 hours a day.
- Adjust the position of the collar every 1~2 hours.
- Check the position of the receiver on a frequent basis to prevent it being squeezed too tightly and to ensure that the operating instructions are followed.
- Every week regularly wipe the dog's neck and the Receiver's contact area with a towel.
- If you see a rash or damaged skin, discontinue wearing the collar until it heals. Consult your veterinarian if the problem persists more than 48 hours.
- If a pull-cord is required, it's better to wear a separate collar strap rather than attached to the Receiver collar.

- 13 -

Important Security Information

Tips:

1. Before using the product, please read the user manual and any safety information completely to avoid injury caused by inappropriate usage!
2. Do not use the device on dogs who are less than three months old, weigh less than eight pounds, are old or pregnant, easily scared, aggressive, or in heat, or are otherwise in poor condition!
3. Shock mode is always the last choice! Before using the shock mode, you should first try the Beep/Light/Vibration mode for your pet in turn.
4. Training start with the lowest level of stimulation.
5. Do not leave the collar on your dog for more than 12 hours per day! (Better within 6h)
6. Check the receiver and the collar every 1~2h, adjust the position and tightness if necessary to prevent excessive pressure.
7. Daily check the skin health of the dog's neck, if there are any anomalies, discontinue usage of this product and consult a veterinarian!
8. Take the dog training collar off if the dog is alone at home/somewhere or you do not train the dog!
9. Do not attach the dog leashes to this training collar!
10. It is forbidden to use the product in the presence of open flame or under an extremely hot condition!

- 14 -

Product Specification

Product Dimension	Remote : 120*45*18 MM
	Receiver: 55*35*30 MM
Receiver's Casing	IP67 waterproof
Remote's Casing	Non-waterproof
Remote/Receiver's battery	3.7V/300mAh LiP
Charging Voltage	DC 5V
Remote/Receiver Charging Time	2 hours
Charging Port	Type-C
Wireless Power	10mW
Operating Environment	0~40℃
Remote/Receiver Standby Time	Remote: 120 days Receiver: 45 days
Frequency	433MHz



Made in China

- 15 -

FCC Warning:

This equipment has been tested and found to comply with the limits for a Class B digital device, pursuant to part 15 of the FCC Rules. These limits are designed to provide reasonable protection against harmful interference in a residential installation. This equipment generates, uses and can radiate radio frequency energy and, if not installed and used in accordance with the instructions, may cause harmful interference to radio communications. However, there is no guarantee that interference will not occur in a particular installation. If this equipment does cause harmful interference to radio or television reception, which can be determined by turning the equipment off and on, the user is encouraged to try to correct the interference by one or more of the following measures:

- Reorient or relocate the receiving antenna.
- Increase the separation between the equipment and receiver.
- Connect the equipment into an outlet on a circuit different from that to which the receiver is connected.
- Consult the dealer or an experienced radio/TV technician for help.

Caution: Any changes or modifications to this device not explicitly approved by manufacturer could void your authority to operate this equipment.

This device complies with part 15 of the FCC Rules. Operation is subject to the following two conditions:

(1) This device may not cause harmful interference, and (2) this device must accept any interference received, including interference that may cause undesired operation.

This equipment complies with FCC radiation exposure limits set forth for an uncontrolled environment. This equipment should be installed and operated with minimum distance 0cm between the radiator and your body.