

Internal Pictures



Figure 1: Proximal Nozzle Removed

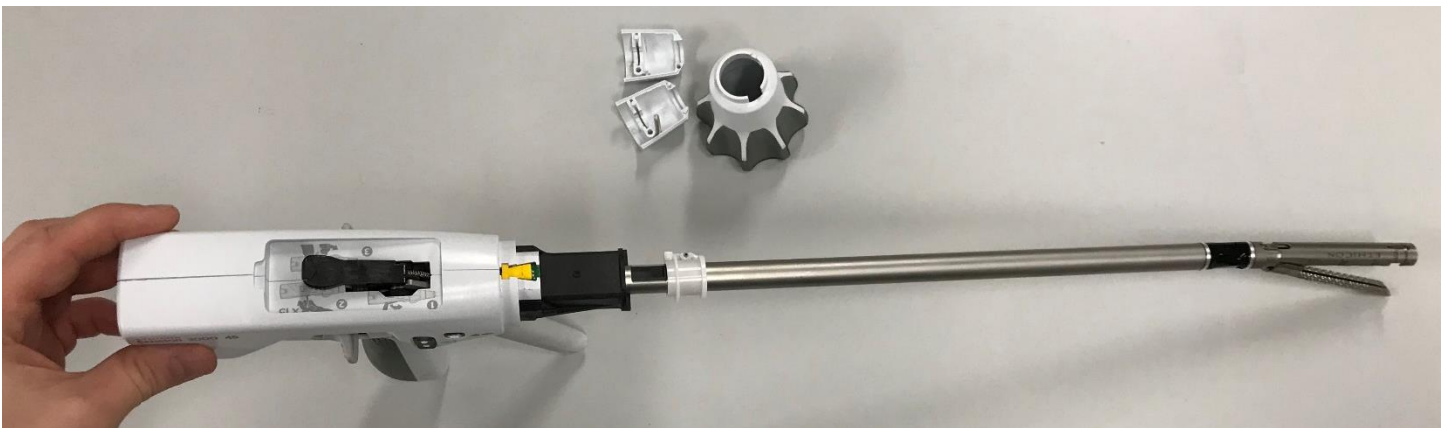


Figure 2: Proximal Nozzle Removed Top



Figure 3: Side 1 Shroud Removed



Figure 4: Side 1 Shroud Removed Close Up



Figure 5: Side 2 Shroud Removed



Figure 6: Side 2 Shroud Removed Close Up

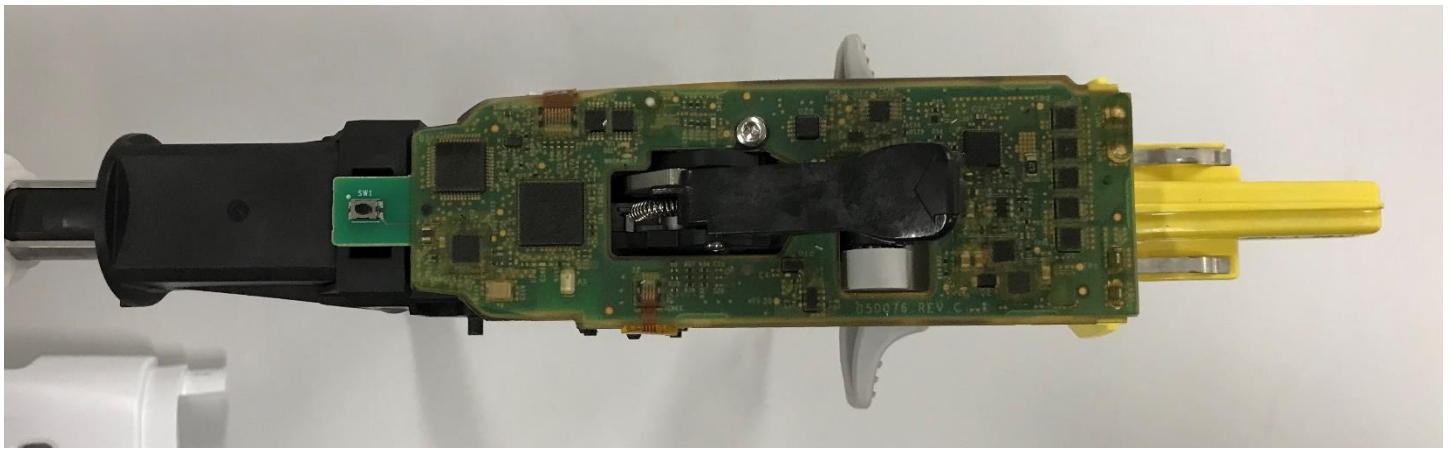


Figure 7: Shroud Removed PCBA Showing PCBA



Figure 8: Shroud Removed, PCBA Removed

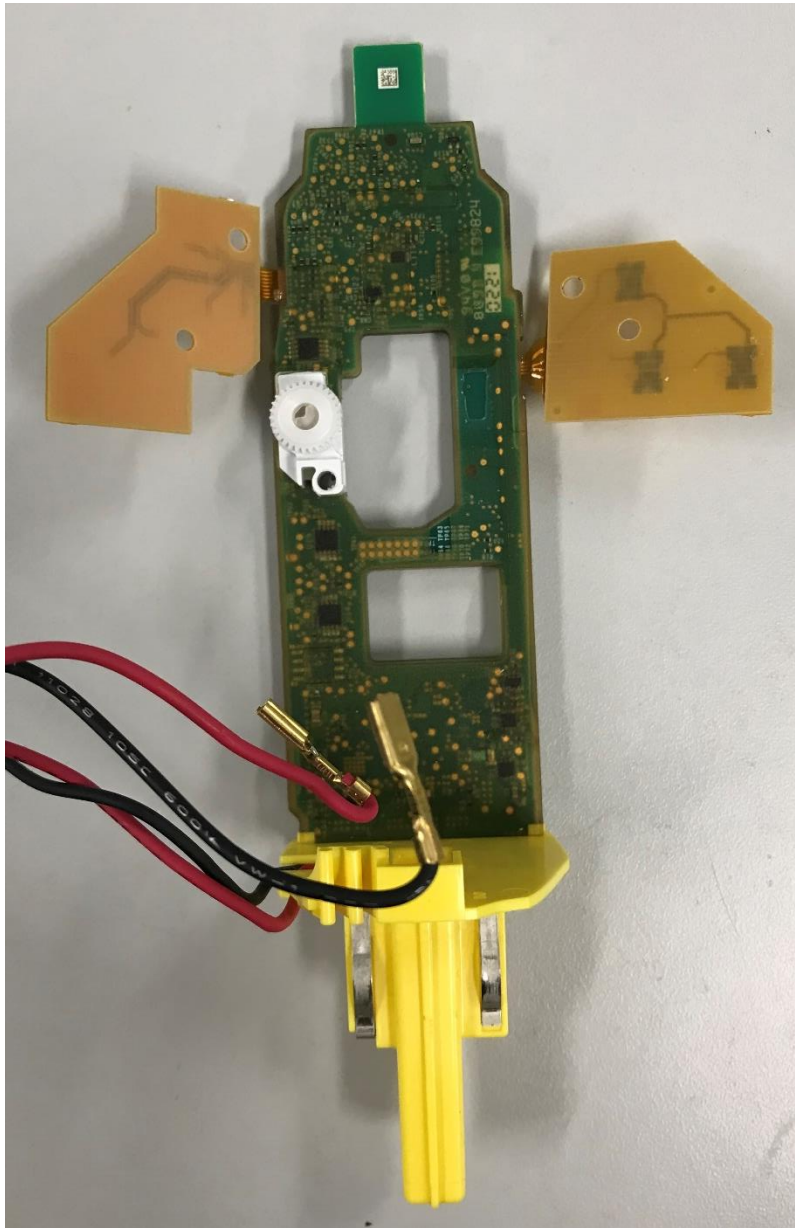


Figure 9: Bottom of PCBA Removed From Device



Figure 10: PCBA Battery Bulkhead and Contacts Close Up

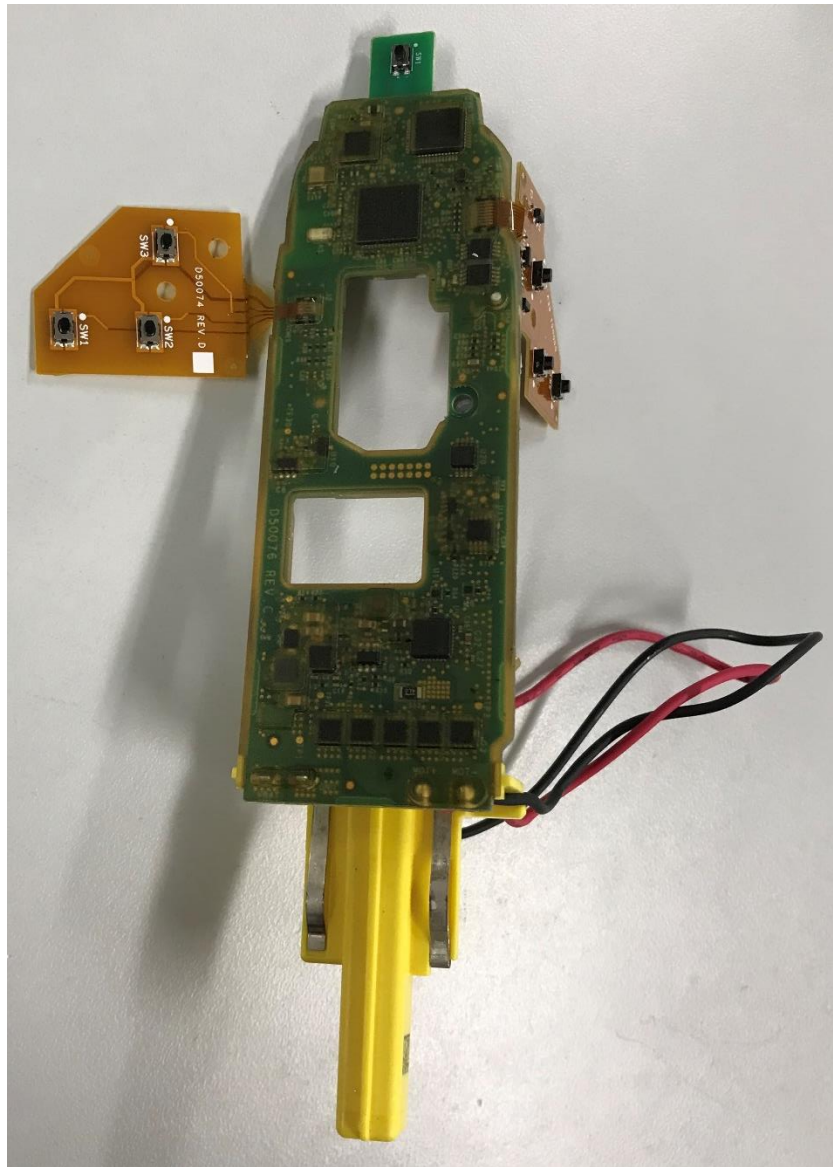


Figure 11: PCBA Removed From Device Assembly

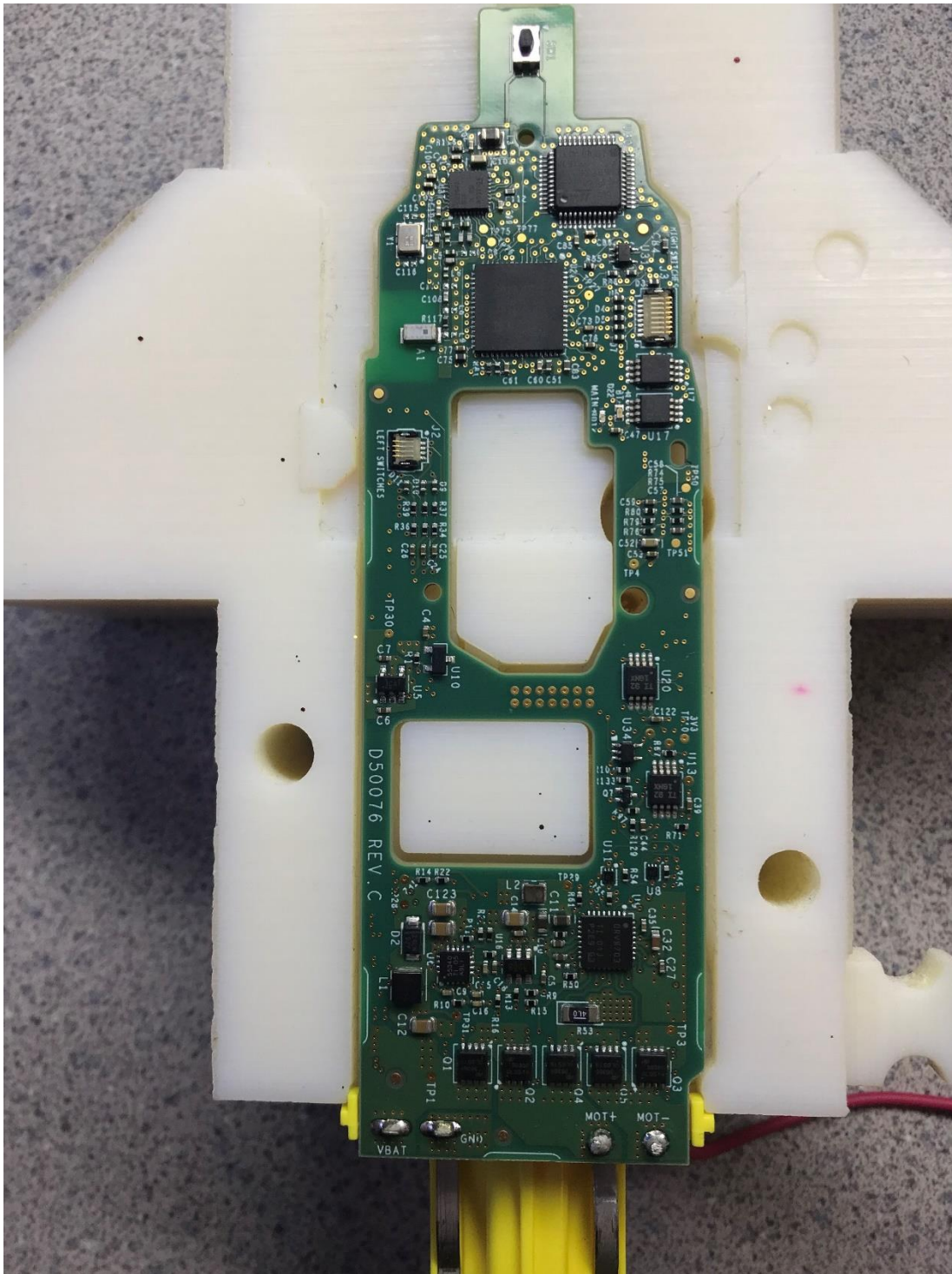


Figure 12: PCBA Front Conformal Coating Removed

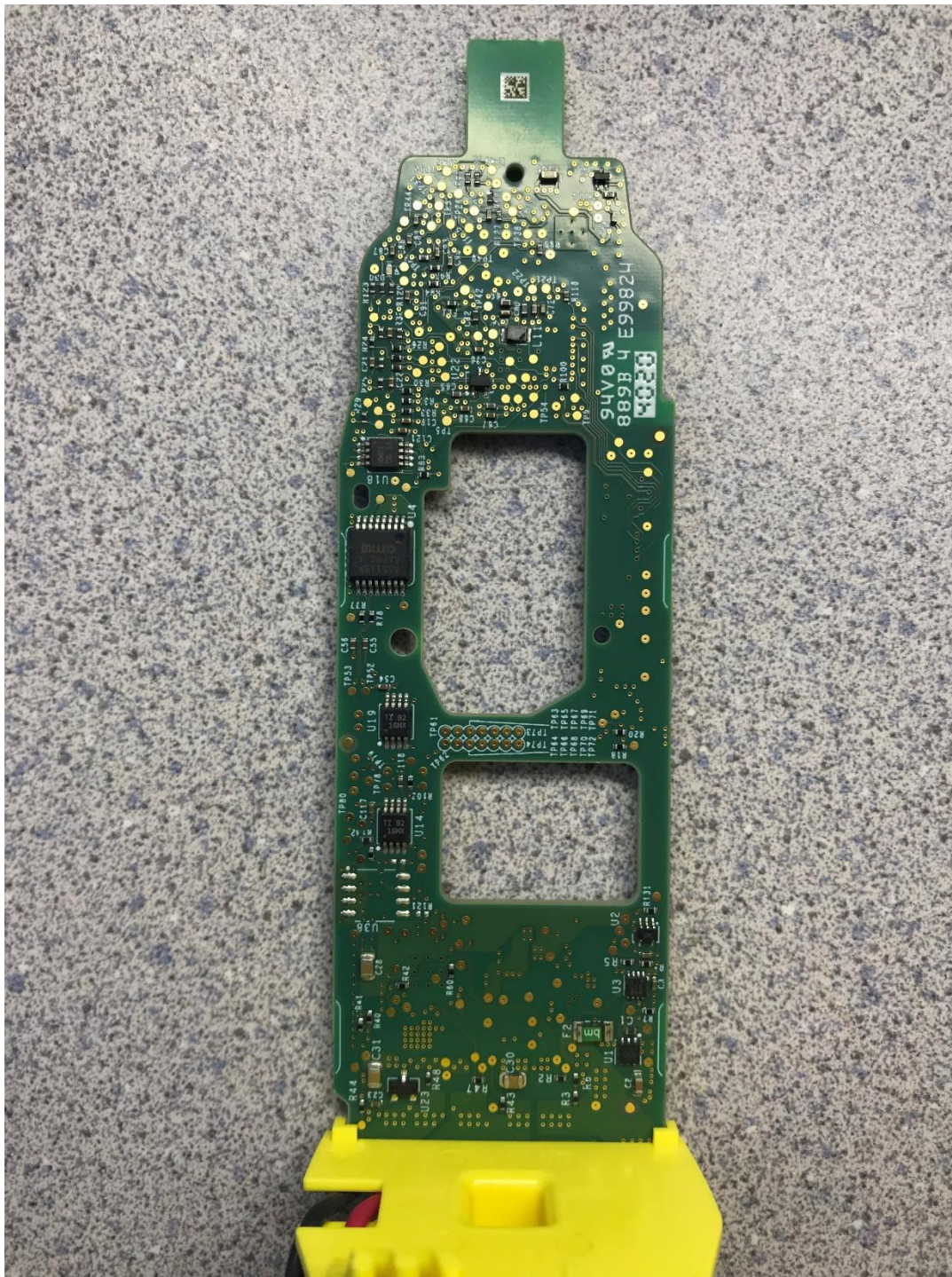


Figure 13: PCBA Back Conformal Coating Removed