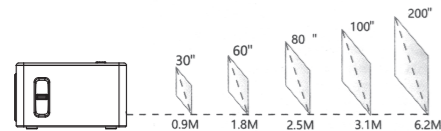


Projector connection



Projection distance and size



Specification

| Display technology | light source | native resolution | Resolution support |
|--------------------|--------------|-------------------|--------------------------------------|
| LCD | LED | 800 x 480 | 576i, 576P, 720i, 720P, 1080i, 1080P |

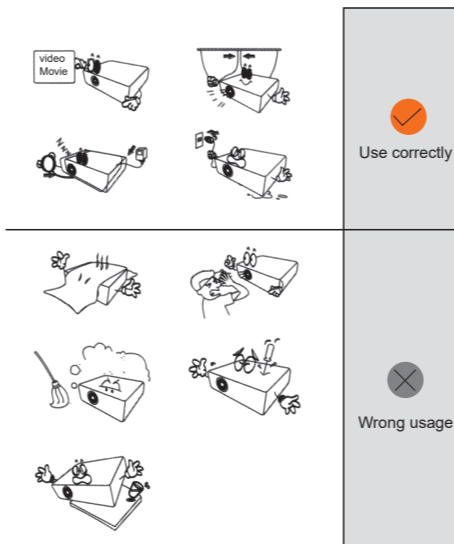
| Projection distance | Projection size | focus | Aspect ratio |
|---------------------|-----------------|--------|--------------|
| 0.9-6.2M | 30"-200" | manual | 4:3/16:9 |

| speaker | Electronic Keystone | unit size | installation type |
|---------|---------------------|--------------|--|
| 3W4Ω | ±15° | 148X103x60mm | Front Projection/Rear Projection/Ceiling Mount |

| | | | |
|------------|--------|--|------------------|
| AC100-240V | 0.37kg | AVI/MP4/MKV/MOV/3GP/MPEG1/MPEG2/H.264/XVID | BMP/JPG/JPEG/PNG |
|------------|--------|--|------------------|

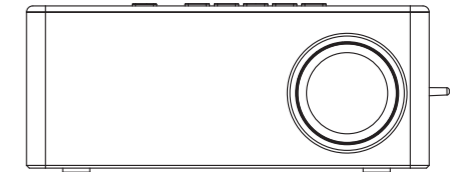
| port | Supported Audio Formats |
|---|------------------------------|
| HDMI*1/USB*1/DC IN*1 AV IN*1/AudioOut*1/ TFCardSlot*1 | MP2/MP3/PCM/ FLAC/WMA/AAC |

Notice

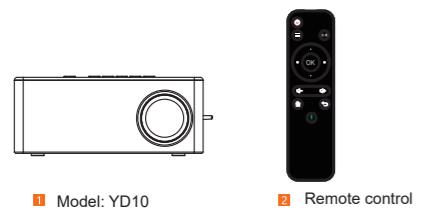


Troubleshooting Guide

- The picture is not clear**
*Adjust the focus ring.
*Projector and screen/wall must be at a valid distance.
- Remote control no response**
*Ensure the remote point directly on the IR receiver.
*Do not block IR reception.
*Check the battery.
- Mobile connection**
Mobile phone: use the same screen device
Computer: HDMI connection of ordinary computer / Apple computer or type-c to HDMI cable without HDMI output (for computer, please switch to copy or expand mode)
- Upside down image**
Enter the "Menu" on the projector or remote to flip the projected image



packing list

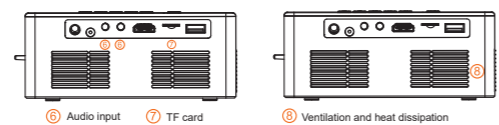
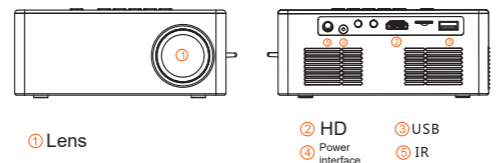
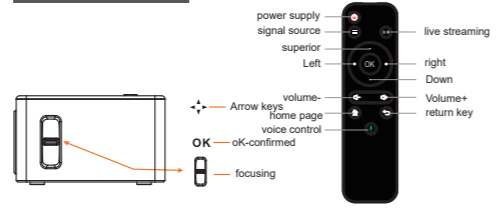


- Model: YD10
- Remote control

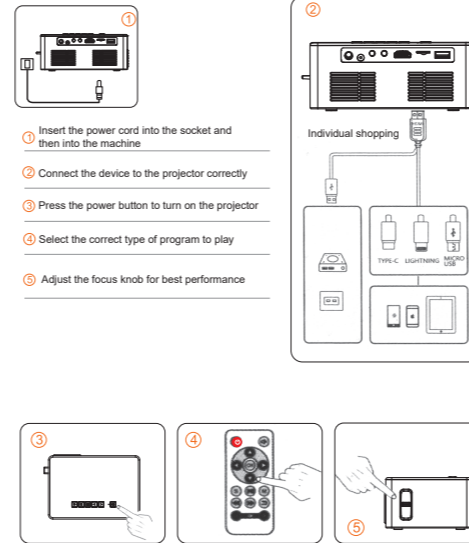


- Instructions

Function description

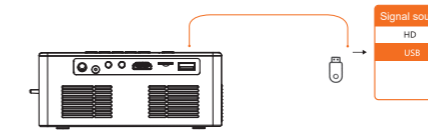


Fastest to use



Enter link

A Signal source



B HDMI link



FCC Warning

This device complies with Part 15 of the FCC Rules. Operation is subject to the following two conditions:

- This device may not cause harmful interference, and (2) this device must accept any interference received, including interference that may cause undesired operation.
- Changes or modifications not explicitly approved by the party responsible for compliance could void the user's authority to operate this equipment.

NOTE 1: This equipment has been tested and found to comply with the limits for a Class B digital device, pursuant to part 15 of the FCC Rules. These limits are designed to provide reasonable protection against harmful interference in a residential installation. This equipment generates uses and can radiate radio frequency energy and, if not installed and used in accordance with the instructions, may cause harmful interference to radio communications. However, there is no guarantee that interference will not occur in a particular installation. If this equipment does cause harmful interference to radio or television reception, which can be determined by turning the equipment off and on, the user is encouraged to try to correct the interference by one or more of the following measures:

- Reorient or relocate the receiving antenna.
- Increase the separation between the equipment and receiver.
- Connect the equipment into an outlet on a circuit different from that to which the receiver is connected.
- Consult the dealer or an experienced radio/TV technician for help.

Radiation Exposure Statement
To comply with FCC RF exposure compliance requirements, this grant is applicable to only mobile configurations. The antennas used for this transmitter must be installed to provide a separation distance of at least 20cm from all persons and must not be co-located or operating in conjunction with any other antenna or transmitter.