

HD HoistCam™

2.4G Wireless Video Transceiver (HD1x7i)



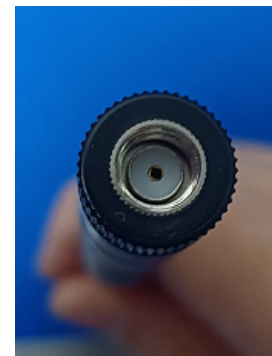
The modular HoistCam transceiver set includes a HoistCam TX Module and HoistCam RX Module that can be powered on each unit. A clear line-of-sight must be maintained between the TX and RX Modules.

HoistCam™ TX Module



Included:

- One (1) HoistCam TX Enclosure
- One (1) HoistCam RX Module
- Two (2) 2.4Ghz antennas



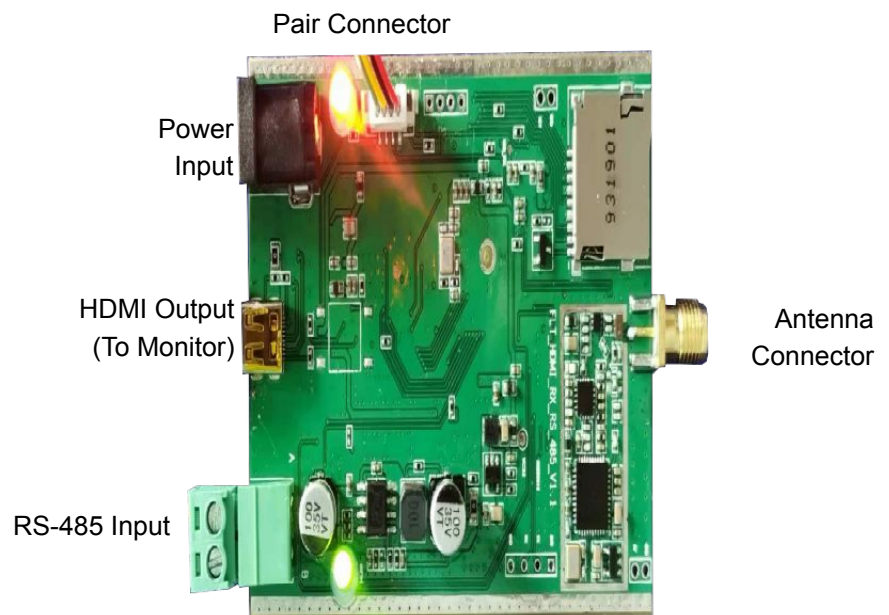
2.4Ghz Antenna

VIDEO INTRO & OVERVIEW

www.hoistcam.com/installsys



Scan QR Code
With Your Phone



HoistCam™ RX Module

Table of Contents

READ FIRST NOTICE 3

REGULATORY NOTICE..... 4

LEGAL NOTICE..... 4

Transmitter and Receiver Overview..... 6

HoistCam RX Module..... 7

HoistCam TX Module..... 8

Best Practices..... 9

HOISTCAM: READ THIS FIRST

WARNING

- THE HOISTCAM IS INTENDED TO INCREASE THE VISUAL CAPABILITIES OF THE OPERATOR. OBJECTS IN MONITOR ARE DELAYED AND CLOSER OR FARTHER THAN THEY APPEAR. IT IS NOT INTENDED TO REPLACE SPOTTERS, RIGGERS OR LOOKOUTS. INDUSTRY RECOGNIZED SAFETY PRACTICES MUST BE USED.
- MOUNT SURFACE AND MAGNETS MUST BE CLEAN AND DRY BEFORE ATTACHING TO A SURFACE.
- SAFETY LANYARD MUST BE PROPERLY SECURED AND ATTACHED TO THE HANDLE OF THE UNIT IF INSTALLING THE UNIT 3 FEET OR HIGHER OFF THE DECK OR GROUND. ALL FOUR MAGNETS MUST BE FIRMLY ATTACHED TO A MAGNETIC SURFACE (EXAMPLE: FERROUS METAL, IRON, ETC).
- TO REDUCE THE RISK OF ELECTRIC SHOCK, DO NOT REMOVE COVER AND REPLACE CAPS WHEN NOT IN USE.
- WHEN CLEANING THE DEVICE, TURN IT OFF FIRST, USE A CLEAN SOFT CLOTH MOISTENED WITH A LITTLE BIT OF WATER TO CLEAN IT.
- DO NOT APPLY PRESSURE OR DROP TO THE UNIT. TURN THE POWER OFF ON THE HOISTCAM WHEN RELOCATING. DO NOT USE THE CAMERA NEAR A GENERATOR, HEATER, REFRIGERATOR OR STOVE.
- WHEN THE DEVICE IS IN USE, DO NOT DIRECT THE LENS TOWARD ANY BRIGHT LIGHT AS THIS MAY DAMAGE THE OPTICS.
- THE HOISTCAM MUST BE WITHIN LINE-OF-SIGHT OF THE ANTENNA OR REPEATER TO FUNCTION.
- CONTACTING POWER LINES CAN BE LETHAL. MAKE SURE NO POWER LINES ARE ANYWHERE WHERE POSSIBLE CONTACT MAY BE MADE.
- MAKE SURE ALL TOWERS AND MASTS ARE SECURELY GROUNDED AND ELECTRICAL CABLES CONNECTED TO ANTENNAS HAVE LIGHTNING ARRESTORS.
- IMPROPER USE MAY RESULT IN SERIOUS DAMAGE, INJURY OR EVEN DEATH.
- NO GUARANTEE OR LIABILITY WILL BE ACCEPTED FOR ANY DAMAGE CAUSED DUE TO INCORRECT USE OF THE DEVICE SUPPLIED. REFER SERVICING, INSTALLATION AND SAFETY QUESTIONS TO QUALIFIED PERSONNEL.

Visit the HoistCam website at <http://www.hoistcam.com> for additional safety and training tips and videos.



Changes or modifications not expressly approved by the manufacturer could void the user's authority to operate the equipment.



*To prevent electric shock and risk of fire hazards:
Do NOT use other than the specified power source.*

REGULATORY NOTICE

Any changes or modifications not expressly approved by the party responsible for compliance could void the user's authority to operate the equipment.

This device complies with Part 15 of the FCC Rules. Operation is subject to the following two conditions:



1. This device may not cause harmful interference, and
2. This device must accept any interference received, including interference that may cause undesired operation.

Note: This equipment has been tested and found to comply with the limits for a Class B digital device, pursuant to Part 15 of the FCC Rules. These limits are designed to provide reasonable protection against harmful interference in a residential installation. This equipment generates, uses, and can radiate radio frequency energy, and if not installed and used in accordance with the instructions, may cause harmful interference to radio communications. However, there is no guarantee that interference will not occur in a particular installation. If this equipment does cause harmful interference to radio or television reception, which can be determined by turning the equipment off and on, the user is encouraged to try and correct the interference by one or more of the following measures:

- Reorient or relocate the receiving antenna
- Increase the separation between the equipment and receiver
- Connect the equipment into an outlet on a circuit different from that to which the receiver is connected
- Consult the dealer or an experienced radio/TV technician for help

FCC ID: 2A36U-HD1X7

LEGAL NOTICE

HoistCam products are designed to meet safety and performance standards with the use of specific HoistCam authorized accessories.

Netarus, LLC disclaims liability associated with the use of non-HoistCam authorized accessories.

The recording, transmission, or broadcast of any person's voice without their consent or a court order is strictly prohibited by law. HoistCam makes no representations concerning the legality of certain product applications such as the making, transmission, or recording of video and/or audio signals of others without their knowledge and/or consent. We encourage you to check and comply with all applicable local, state, and federal laws and regulations before engaging in any form of surveillance or any transmission of radio frequencies.

Other trademarks and trade names may be used in this document to refer to either the entities claiming the marks and names or their products. Netarus, LLC disclaims any proprietary interest in trademarks and trade names other than its own.

No part of this document may be reproduced or distributed in any form or by any means without the express written permission of Netarus, LLC.

HoistCam™ is a trademark of Netarus, LLC
4855 Brookside Ct, Ste B, Norfolk, VA 23502 USA
Sales/Support: +1.757.819.4600



ELECTRONIC VERSION OF USER MANUAL

DOWNLOAD LATEST PDF OF THIS MANUAL

Contact Netarus for an updated and complete version of this user manual. Please make sure to include the model number, serial number and company name with your request.

- Email: support@netarus.com
- Web: <https://support.netarus.com>

QUICK START VIDEOS AVAILABLE

To view the latest quick start videos available from HoistCam, please visit:

www.hoistcam.com/qs

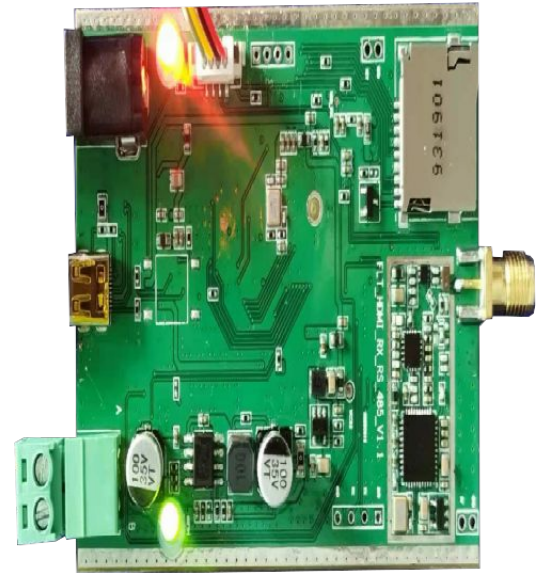
Transmitter and Receiver Overview

WARNING: Be careful when opening the HoistCam and keep internal components away from the water. The RX module is design to be integrated into a separate enclosure and connected to a 'pair button'

The RX board must be stored inside the cab or control room away from weather

Before shipment of this unit, the transmitter and receiver should have been paired. You should be able to instantly use the camera. If you want to re-pair your transmitter and receiver, please follow the instructions below.

1. Make sure you are in an indoor area and not exposed to any water or weather elements.
2. Place the HoistCam as close as you can to the receiver's antenna. Direct line of site is best.
3. Verify that the monitor is connected to the RX module and the video input of the monitor is connected with the supplied HDMI cable.
4. Connect the receiver to power and turn on the monitor.
5. Prepare the HoistCam for pairing:
 1. Open the cover of the HoistCam case by pressing the two clasps on each side. You should see red LED **Pair** button inside the unit on the control panel.
 2. Power on the HoistCam.
 3. The HoistCam's transmitter **Pair** button light will flash once when power is applied.
6. RX Module:
 1. Next, press the **Pair** button on the RX board and release it after it starts flashing.
 2. The monitor should show a small orange pairing icon in the middle of the screen. Pairing takes roughly 10-15 seconds.
7. Inside the HoistCam:
 1. Press and hold the 'Pairing' button on the front of the wireless transmitter. Do not release the button until the red LED **Pair** button begins to flash.
8. When the receiver and the transmitter in the HoistCam are properly paired:
 1. The monitor connected to the RX board should briefly show a small green check mark in the middle of the screen, indicating pairing was successful.
 2. The red Pair button on the control panel of the HoistCam and the red Pair button on the RX board will remain lit.
 3. Note: When the HoistCam has not been paired, the red LED will flash for 10 seconds and automatically go out. The transmitter and receiver will not pair again unless the steps above are repeated.
9. The video from the HoistCam should now show on the monitor that is connected to the RX board.
10. Close the cover of the HoistCam and securely latch the clasps before using in any outdoor environment.



HoistCam RX Board

Troubleshooting: No video or blue screen on the monitor of the HoistCam.

Diagnostic Steps:

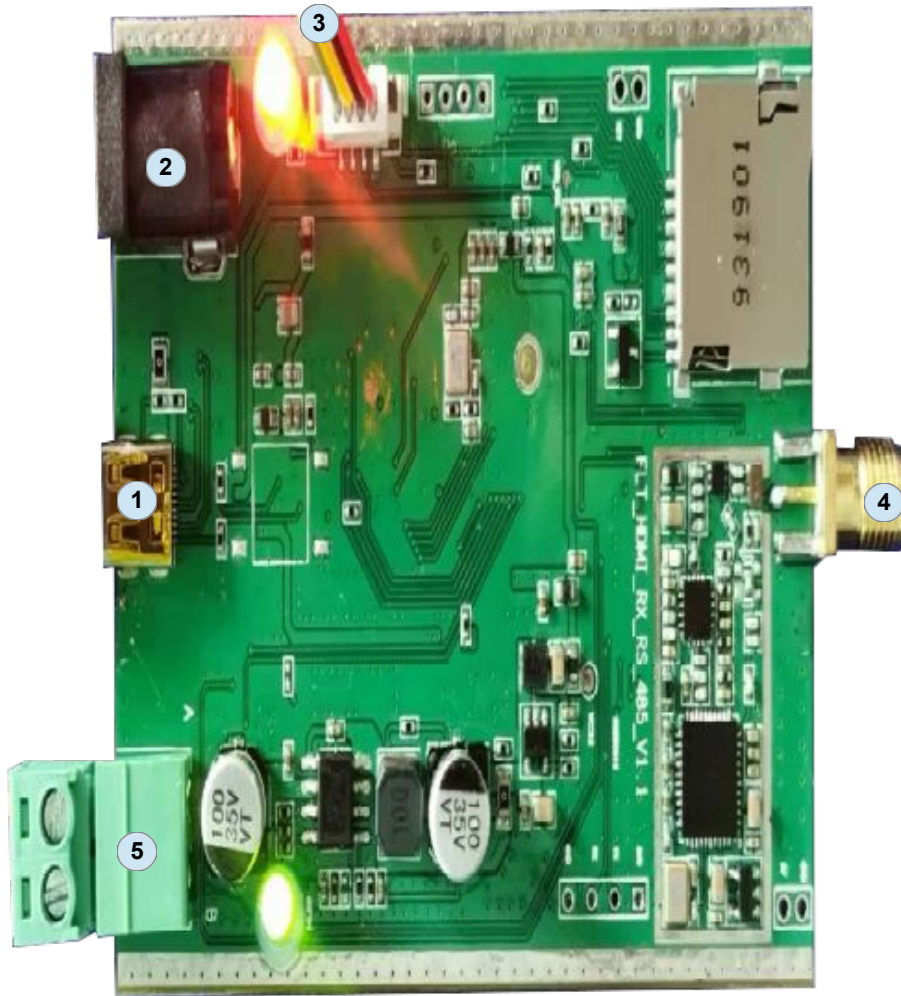
1. Confirm that there is power to the TX and RX board.
2. The monitor is properly connected to the RX board via the HDMI cable
3. Verify that the monitor is set to HDMI.
4. Verify that the red 'Pair' indicator is solid red on the TX enclosure
5. Make sure that there is direct line of site between the antenna on the RX and TX boards

Recommended Maintenance:

1. Keep the power at 12VDC.
2. For the camera, keep the lens clean. Use products such as lens cleaning wipes to keep the camera lens clean.
3. Every 3 months, check the connectors on the antenna to ensure there is no corrosion.

RX Module

The HoistCam's RX module is the central hub receive the video signal from the TX module and for **pairing the HoistCam RX module to another TX module**.



IMPORTANT

The camera must be connected to connector **3** of the **TX enclosure (next page)** in order for the TX and RX board to pair.

RX Module for HD1x7

Description:

1. **HDMI Output to Monitor** – Connect micro HDMI for video input on any monitor.
2. **12VDC Power Input** – Input for 12VDC to power RX Module.
3. **Pair Connector** – Using the Green and Red wires to trigger pairing cycle for the RX Module. The camera must be connected to the TX enclosure in order for the pairing process to work.
4. **Antenna Connector** – Connect SMA antenna to receive video signal from TX Module.
5. **RS-485 Connector** – Connect to operate Pan-Tilt-Zoom functions on camera capable of such actions.

TX Module

The HoistCam's TX Module captures video from a connected camera and transmits to a paired RX Module to be displayed on a Monitor.



IMPORTANT

The camera must be connected to connector **3** above in order for the TX and RX board to pair.

TX Enclosure for the HD1x7

Description:

1. **Pair Button** – Pair button to pair the TX enclosure to the RX board. Press and hold the PAIR button for 3 second to begin pairing.
2. **HoistCam Antenna** – This is the transmitting antenna port for the HoistCam. Make sure to attach the antenna before powering on.
3. **Power Input and Video Input** – connect 12VDC power to this connector. In addition, video from the AHD or TVI camera is connected into this port. The camera must be connected to this connector in order for the TX and RX board to pair.
4. **Power indicator** – if power is apply to the TX enclosure at location **3**, the indicator light will show red.
5. **Pairing indicator** – If flashing green, the TX enclosure is in pair mode. Once done pairing, the pairing indicator light will remain solid green.

Best Practices

The following list is based on recommendations from the manufacturer. It is up to the operator to maintain proper lookouts at all times.

1. Before deploying the HoistCam on another crane, make sure that the camera is zoomed and focused while inside of the operator's cab or adjust the zoom and focus with a radio between the rigger and the operator. This will make it easier on the rigger when placing the HoistCam around the crane.
2. Wash down the HoistCam and optional external power packs after each use with fresh water. Allow to air dry.
3. Keep the magnets clear of rust and other debris.
4. Clean the camera lens with fresh water after and during each use. Do not allow salt to build up on the unit.
5. Keep the HoistCam and external power packs indoors and powered off when not in use. If the power gets too cold (below -10C° / 14F°), the run-time of the power will not be as long.

NEED ANY ASSISTANCE ON DESIGN, INSTALLATION OR LAYOUT?

CONTACT NETARUS. WE ARE HERE TO HELP.