

Spark LINK XLR

User Manual

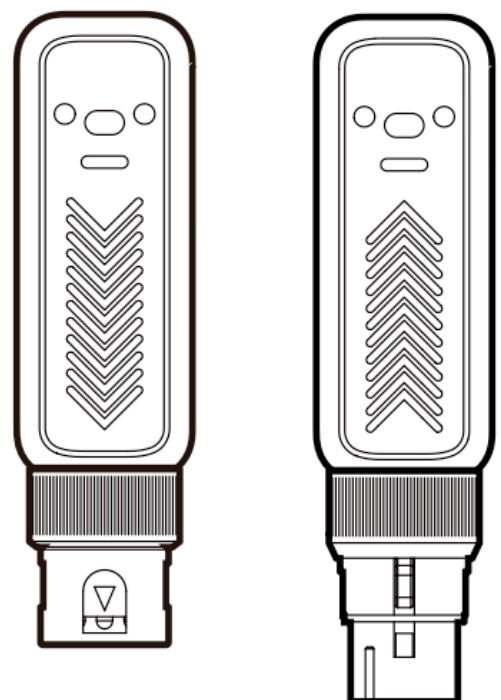


Table of Contents

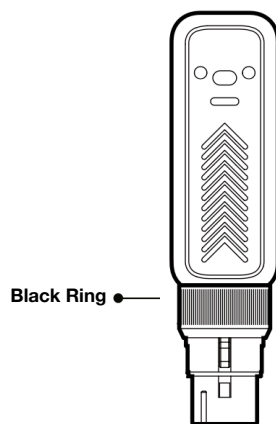
02	Product Specifications
02	What's In The Box?
03	Get Started
04	Operation
06	Charging Spark LINK XLR
06	Auto Power Management
07	Manual Power Reset

Product Specifications

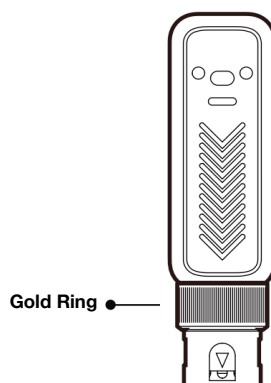
- Frequency range: 2.4GHz
- Sample rate: 24-bit, 48 kHz
- Frequency response: 20 Hz - 20 kHz
- Dynamic range: 103.7 dB
- Latency: < 3ms
- Line of sight range: 70ft (21 meters)
- Battery life: up to 7 hours of continuous use
- Charging time: approx. 2 hours

What's In The Box?

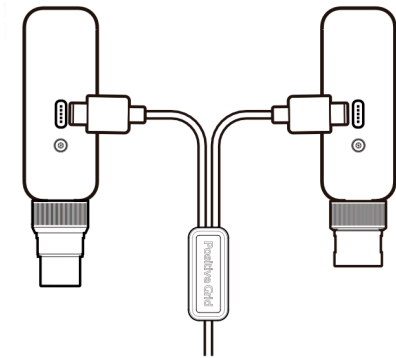
- Spark LINK XLR TX – Transmitter that plugs into your dynamic microphone or mic-level gear. **Note: Spark LINK XLR DOES NOT support condenser microphone.**



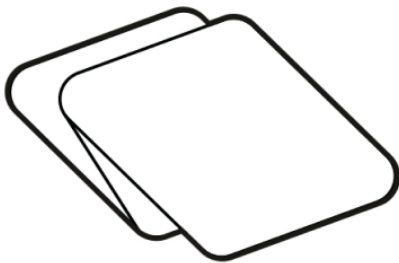
- Spark LINK XLR RX – Receiver that plugs into a XLR input of a PA system, mixer, or audio interface.



- Charging cable.

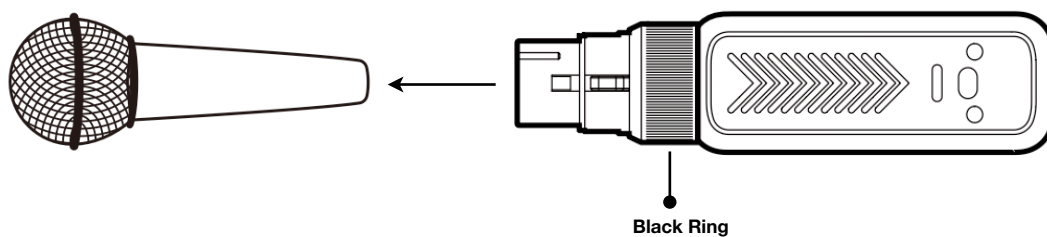


- Get Started Card and Safety Instructions.



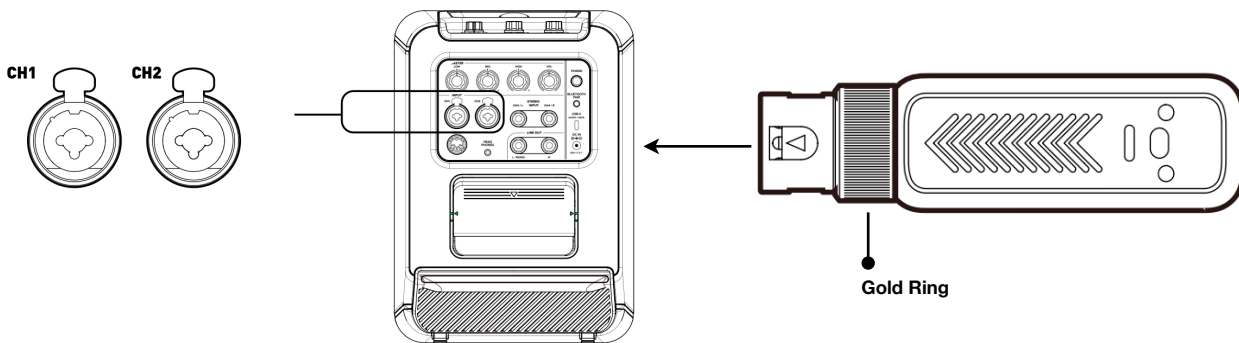
Get Started

- **Connect The Transmitter (TX) To Your Dynamic Microphone**
 1. Plug Spark LINK XLR TX into the output jack of your dynamic microphone.
 2. Press and hold the button to turn on.

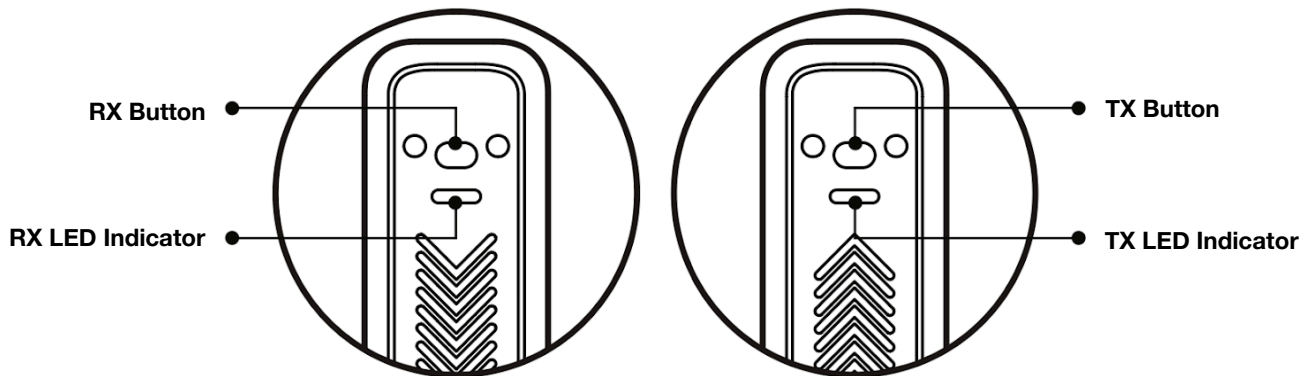


- **Connect The Receiver (RX) To a PA System/Mixer/Audio Interface**

1. Plug Spark LINK XLR RX into the XLR input of your PA system or mixer.
2. Press and hold the button to turn on.



Operation



- **Pairing Spark LINK XLR TX and Spark LINK XLR RX**

Spark LINK XLR TX and Spark LINK XLR RX will automatically pair once both are turned on. The LED will flash blue while pairing and once paired, will show battery status. You can connect up to four Spark LINK XLR setups for simultaneous jamming within the same space.

- **Re-Pairing Spark LINK XLR TX and Spark LINK XLR RX**

While both powered on, double-press the button on Spark LINK XLR TX to scan and re-pair to Spark LINK XLR RX.

- **Muting Spark LINK XLR**

Quick-press the Power button on Spark LINK XLR TX to mute and unmute. The LED will flash yellow and green.

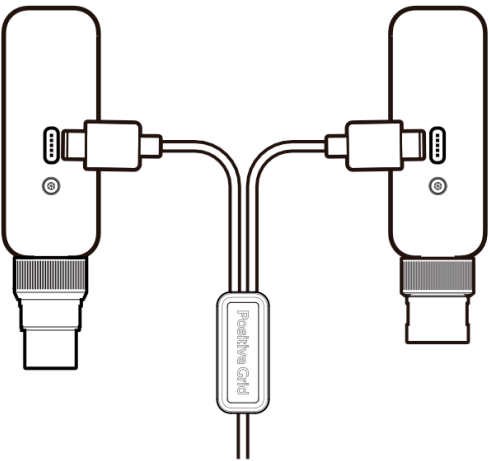
- **LED Indicator**

The LED will flash blue while pairing and once paired, will show battery status.

LED Color	Status
Blue	TX / RX Pairing / Connecting
Green	Battery Level : 16%–100%
Yellow	Battery Level : 5%–15%
Red	Battery Level : Below 5%

Charging Spark LINK XLR

Plug Spark LINK XLR TX and Spark LINK XLR RX into a USB power supply with the USB cable provided. It is recommended the power supply be 5V-1A.



While charging, the LED indicator on both devices will display battery level.

LED Color	Charge Status
Flashing Red	Below 5%
Flashing Yellow	6% - 60%
Flashing Green	60% - 99%
Solid Green	100%

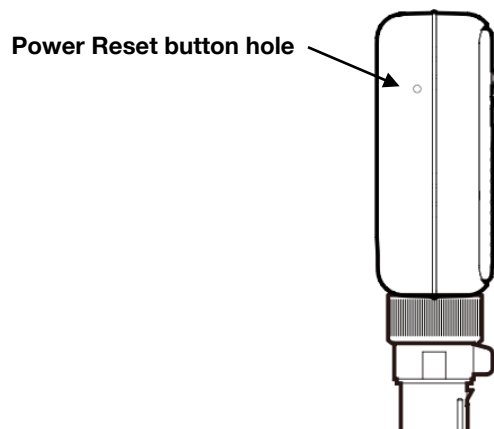
Auto Power Management

If there's no signal for 15 minutes, Spark LINK XLR TX will automatically turn off to conserve battery. Spark LINK XLR RX will likewise turn off after 15 seconds if it detects no connection to Spark LINK XLR TX.

Manual Power Reset

If you encounter any issues with Spark LINK XLR that render it unusable or shut down properly, you can resolve the issue by performing a manual power reset:

1. Locate the reset button inside the small hole on the side of Spark LINK XLR.



2. Use a needle or paperclip to gently insert into the reset button hole. Press the reset button once to reset power.