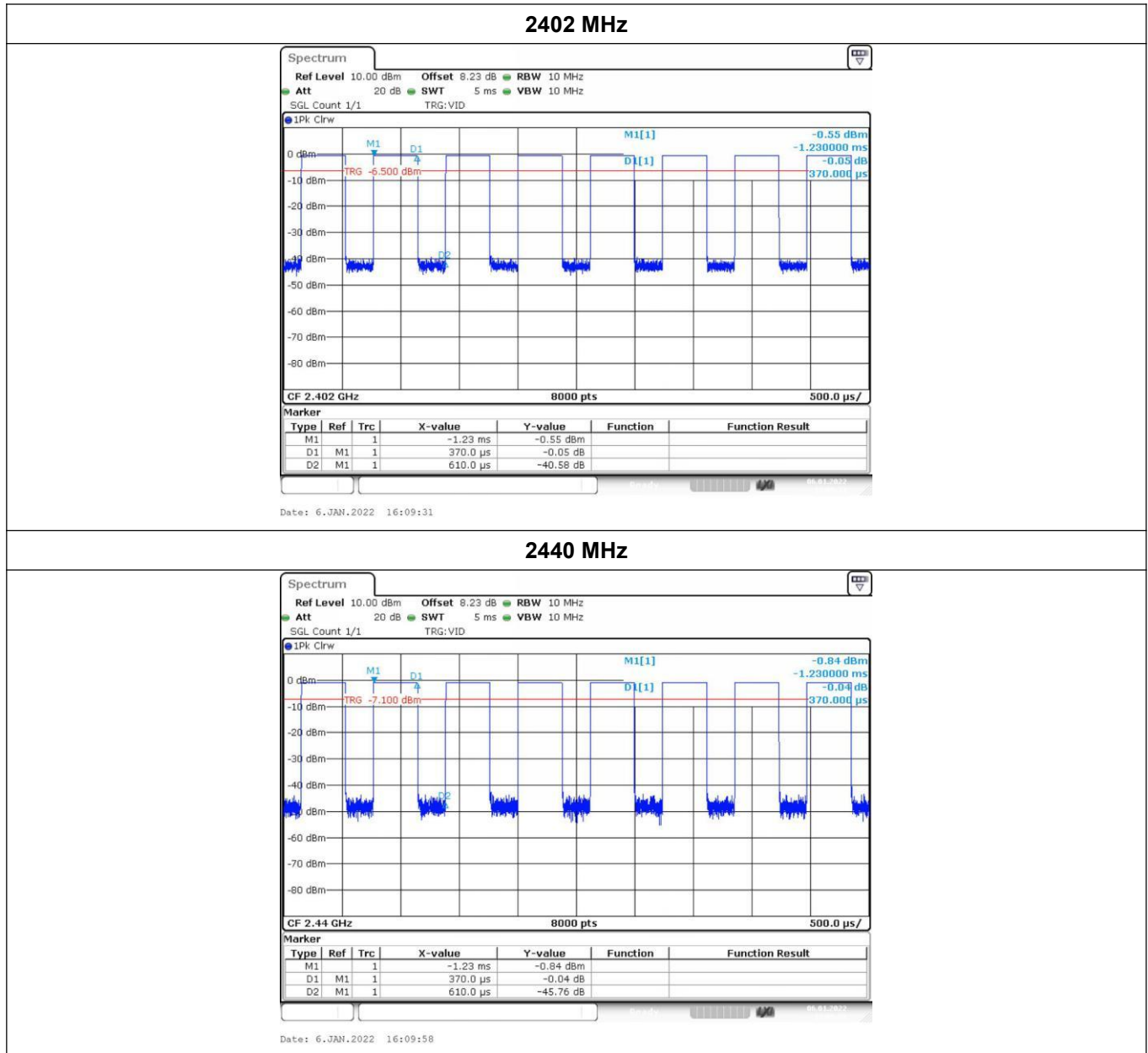


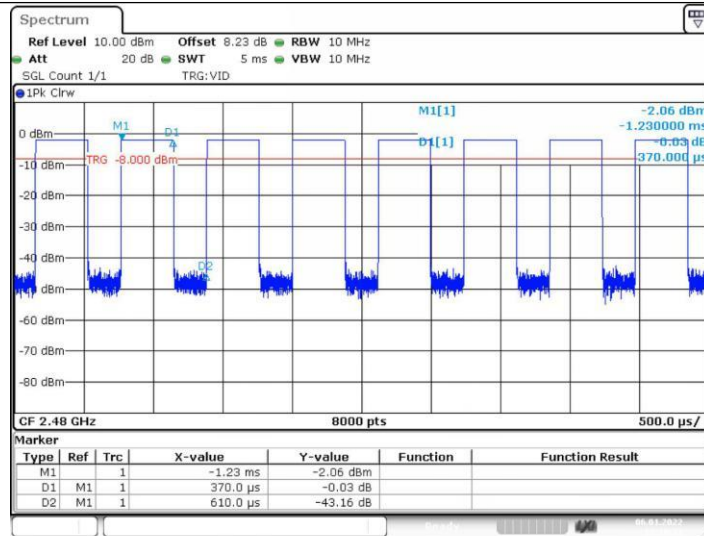
## Test Mode

Please refer to the clause 2.2.

## Test Results



## 2480 MHz



Date: 6.JAN.2022 16:10:31

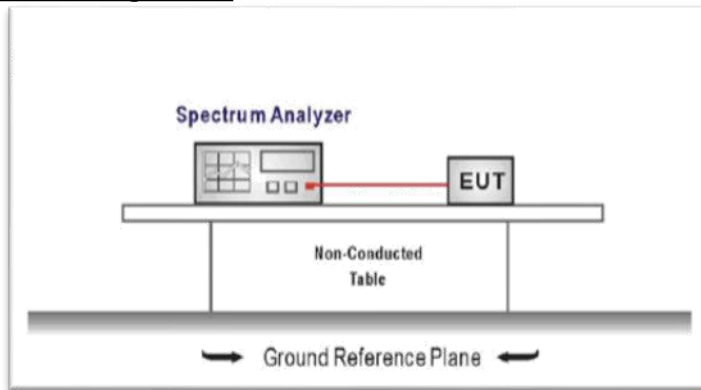
### 3.9. Conducted Band Edge

#### Limit

#### **FCC CFR Title 47 Part 15 Subpart C Section15.247 (d):**

In any 100 kHz bandwidth outside the frequency band in which the spread spectrum intentional radiator is operating, the radio frequency power that is produced by the intentional radiator shall be at least 20 dB below that in the 100 kHz bandwidth within the band that contains the highest level of the desired power, based on either an RF conducted or a radiated measurement.

#### Test Configuration



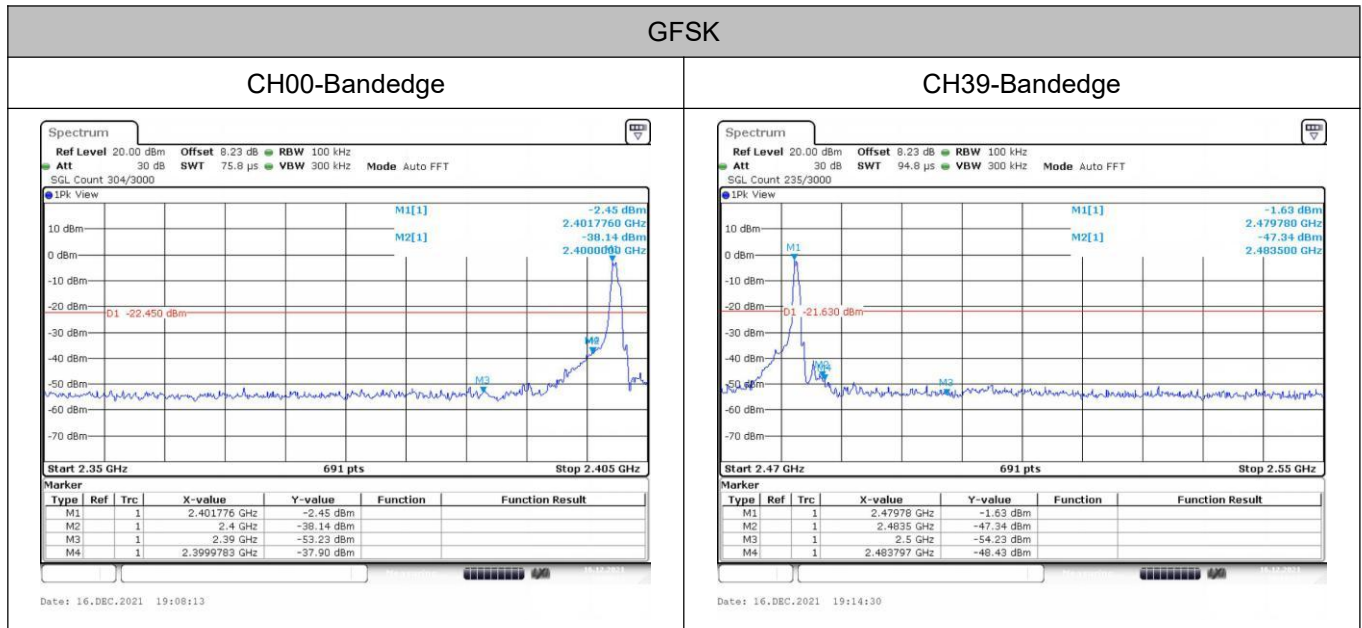
#### Test Procedure

1. Connect EUT RF Output port to the Spectrum Analyzer through an RF attenuator.
2. Spectrum Setting:
  - RBW=100KHz
  - VBW=300KHz.
  - Detector function: Peak.
  - Trace: Max hold.
  - Sweep = Auto couple.
  - Allow the trace to stabilize.

#### Test Mode

Please refer to the clause 2.2.

## Test Results

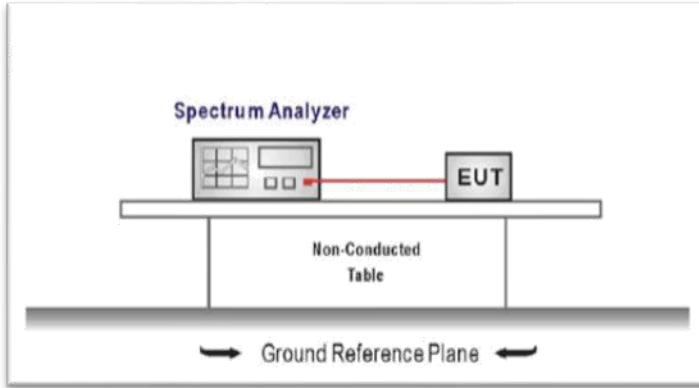


### 3.10. Spurious RF Conducted Emission

#### Limit

Below -20dB of the highest emission level in operating band.

#### Test Configuration



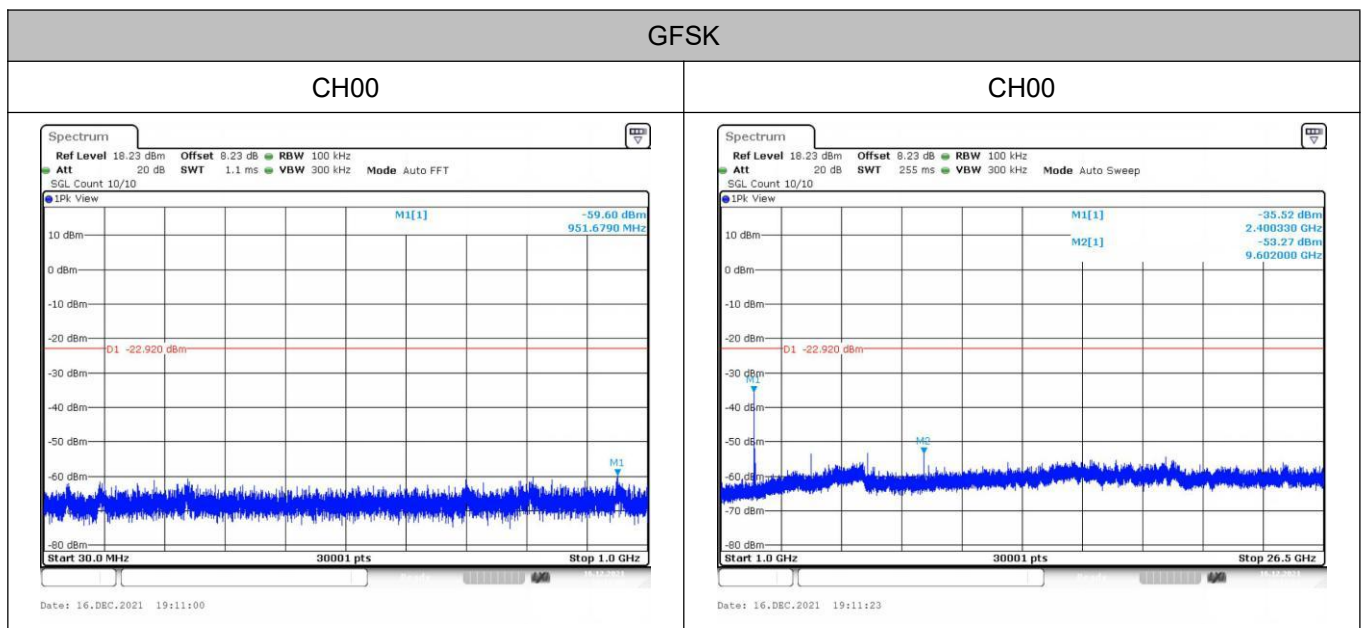
#### Test Procedure

The Spurious RF conducted emissions compliance of RF radiated emission should be measured by following the guidance in ANSI C63.10-2013 with respect to maximizing the emission by rotating the EUT, measuring the emission while the EUT is situated in three orthogonal planes (if appropriate), adjusting the measurement antenna height and polarization etc. Set RBW=100kHz and VBW= 300kHz to measure the peak field strength, and measure frequency range from 9kHz to 26.5GHz.

#### Test Mode

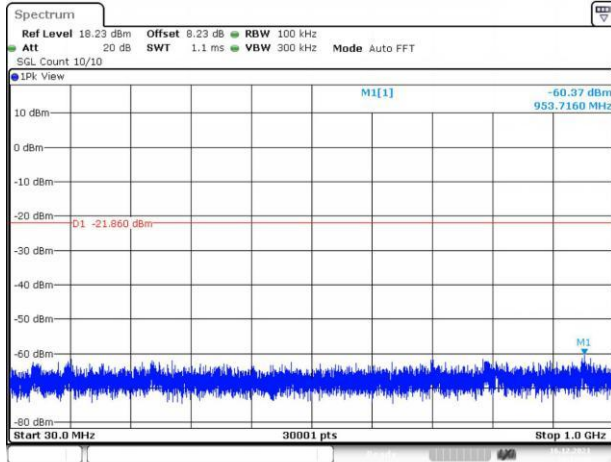
Please refer to the clause 2.2.

#### Test Results



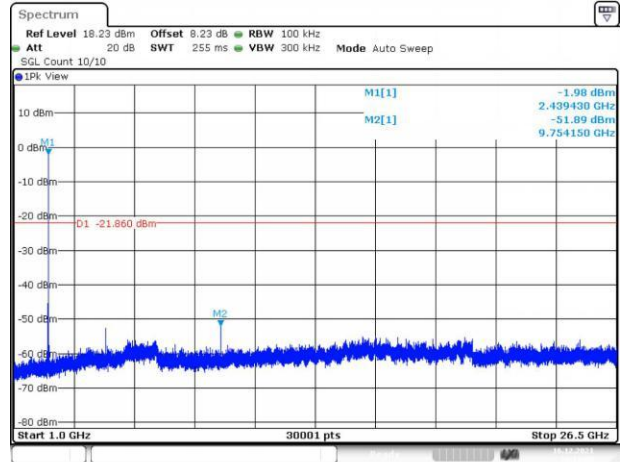
## GFSK

## CH19



Date: 16,DEC,2021 19:12:43

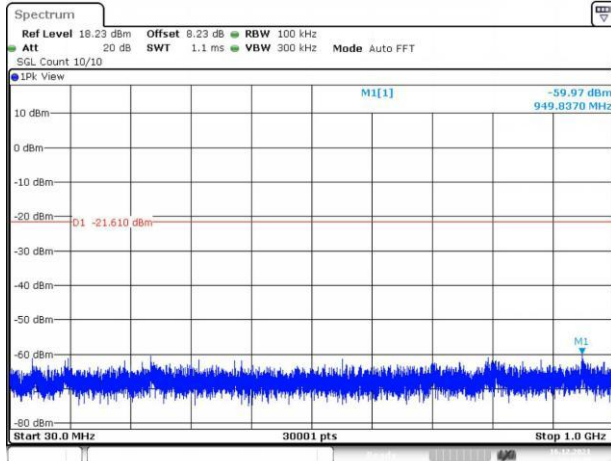
## CH19



Date: 16,DEC,2021 19:13:06

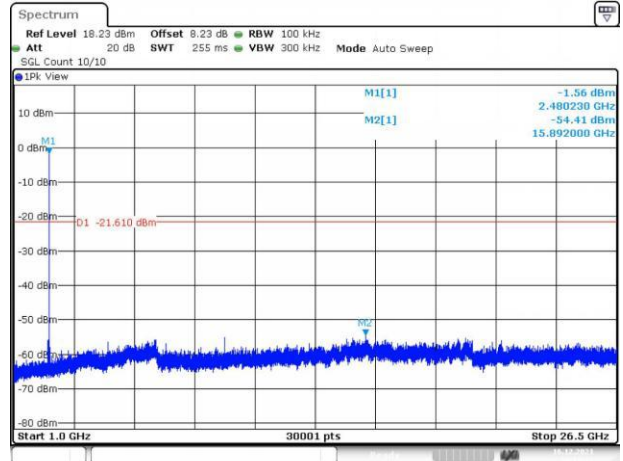
## GFSK

## CH39



Date: 16,DEC,2021 19:16:48

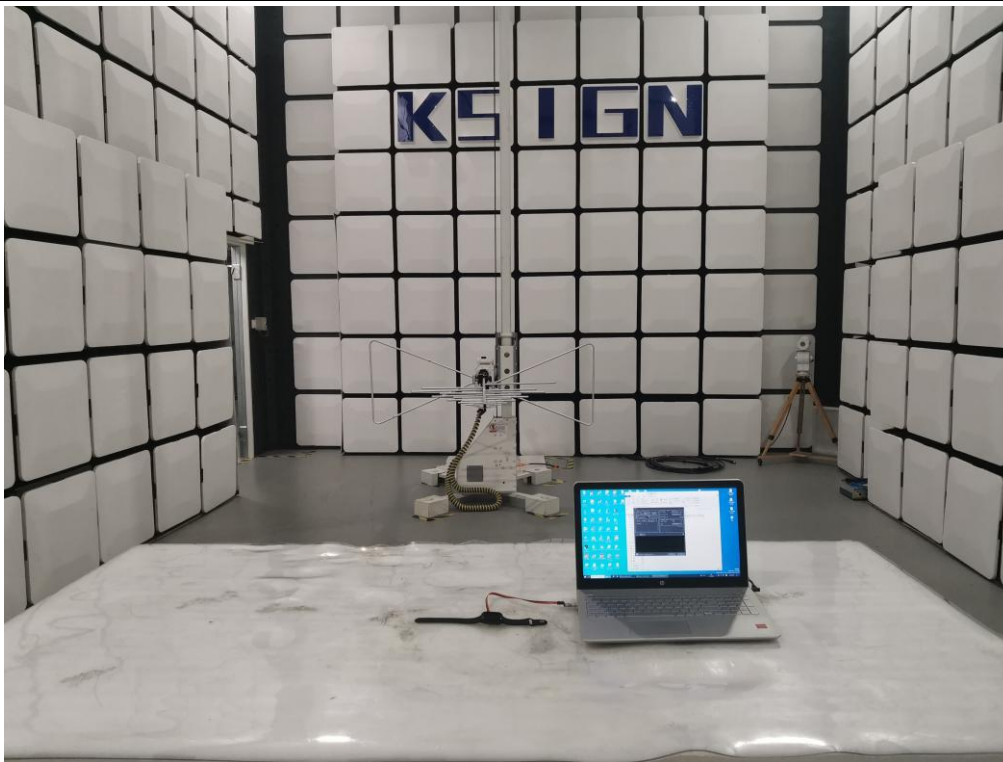
## CH39



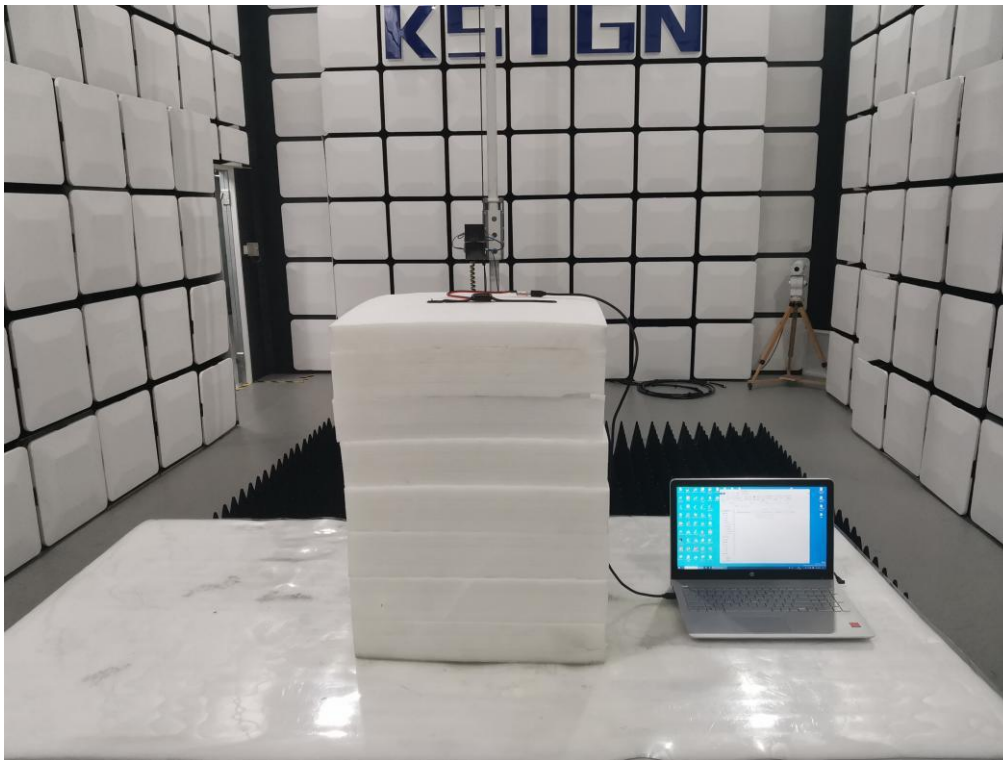
Date: 16,DEC,2021 19:17:12

## 4.EUT TEST PHOTOS

Radiated Measurement (Below 1GHz)



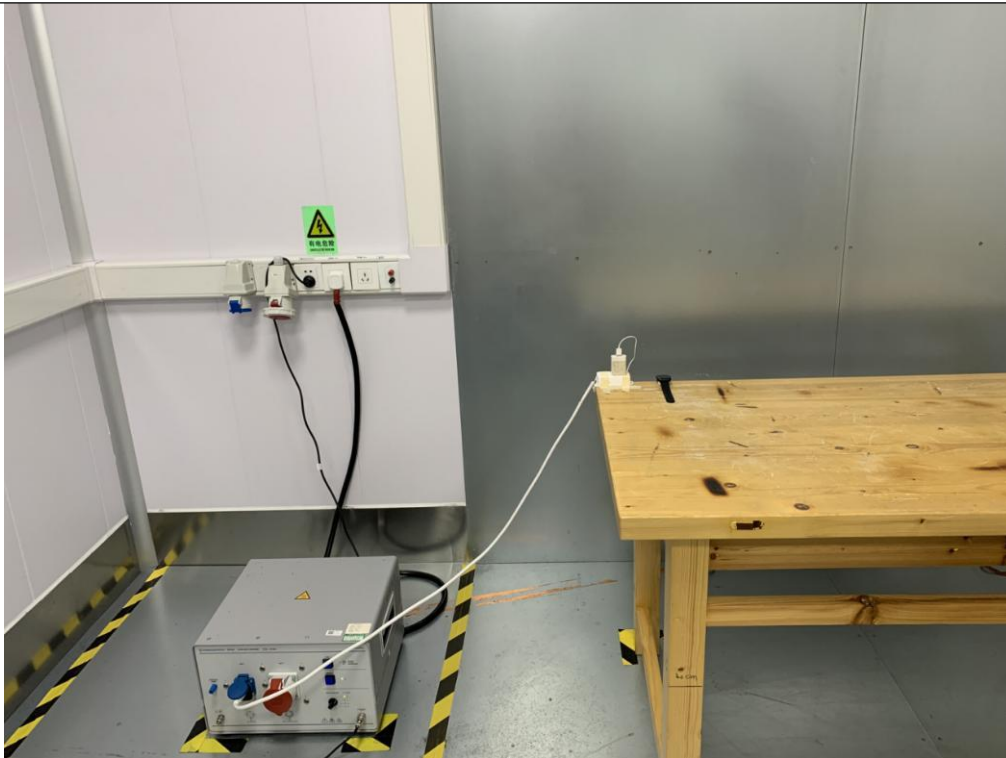
Radiated Measurement (Above 1GHz)



RF Conducted



Conducted Emission



## 5.PHOTOGRAPHS OF EUT CONSTRUCTIONAL

### External Photographs

Photo 1

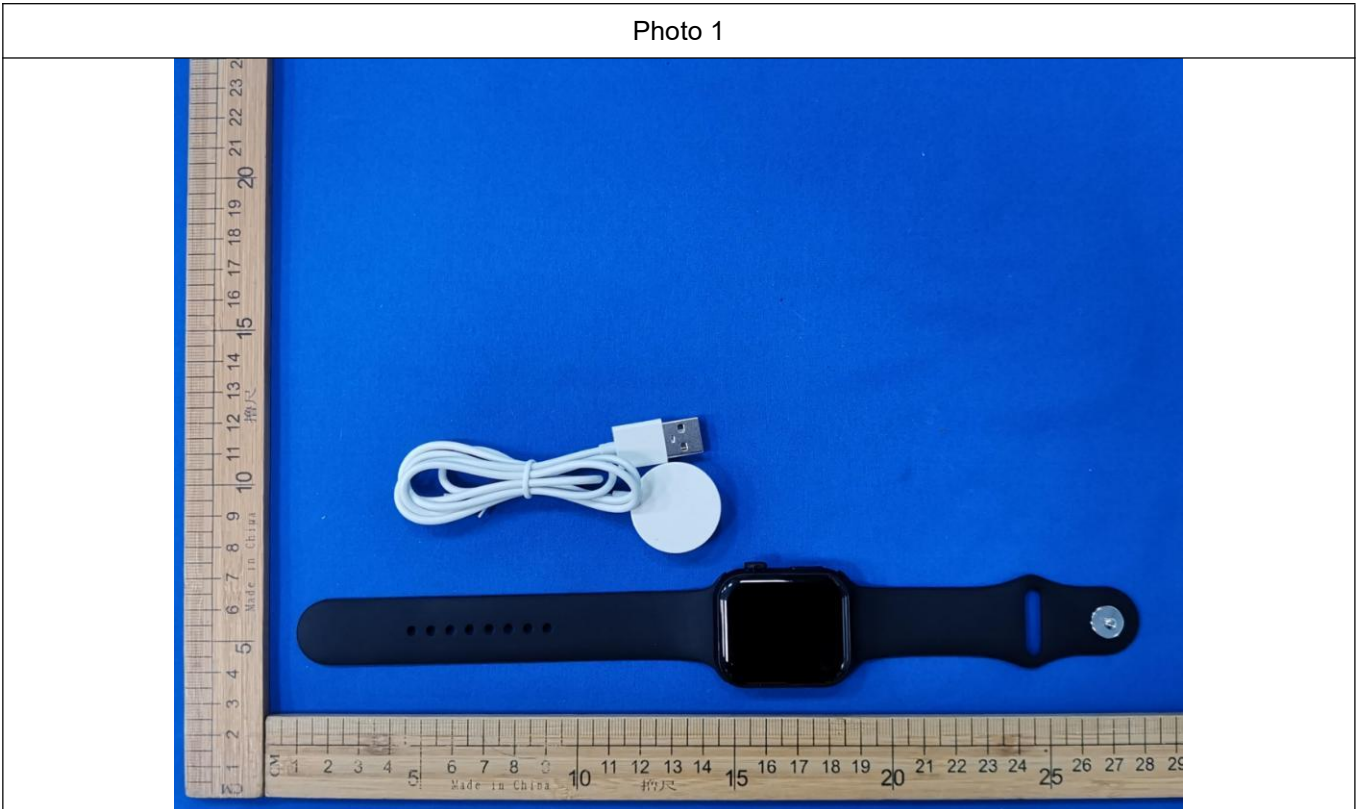


Photo 2



Photo 3

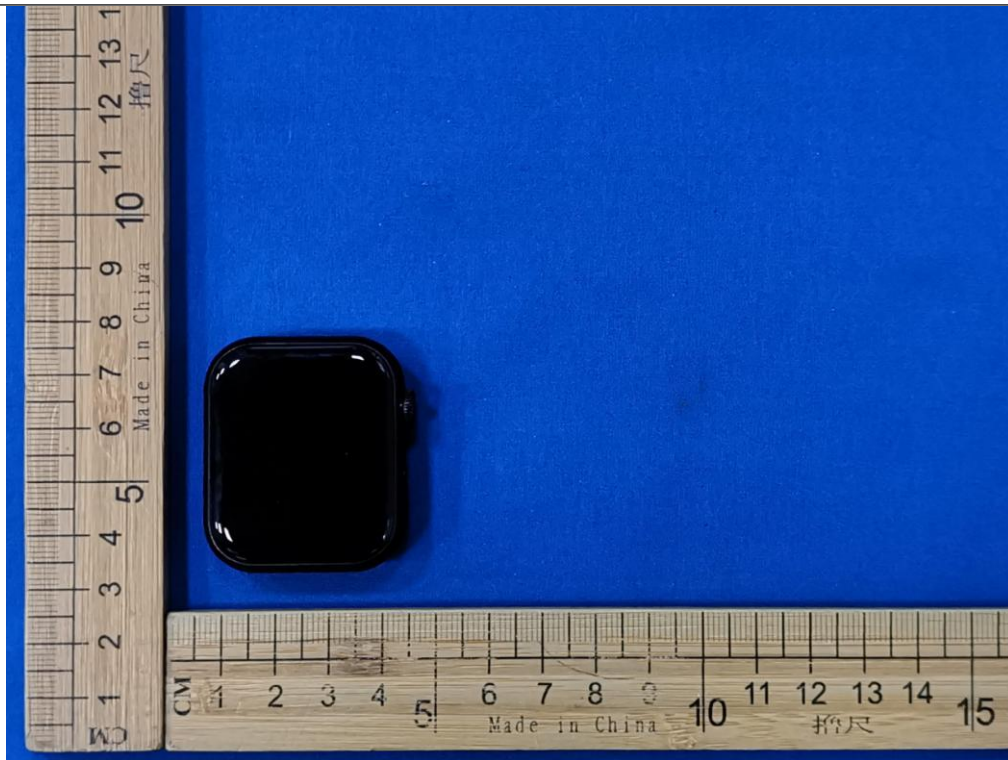


Photo 4



Photo 5



Photo 6



Photo 7



Photo 8



Photo 9



## Internal Photographs

Photo 1



Photo 2

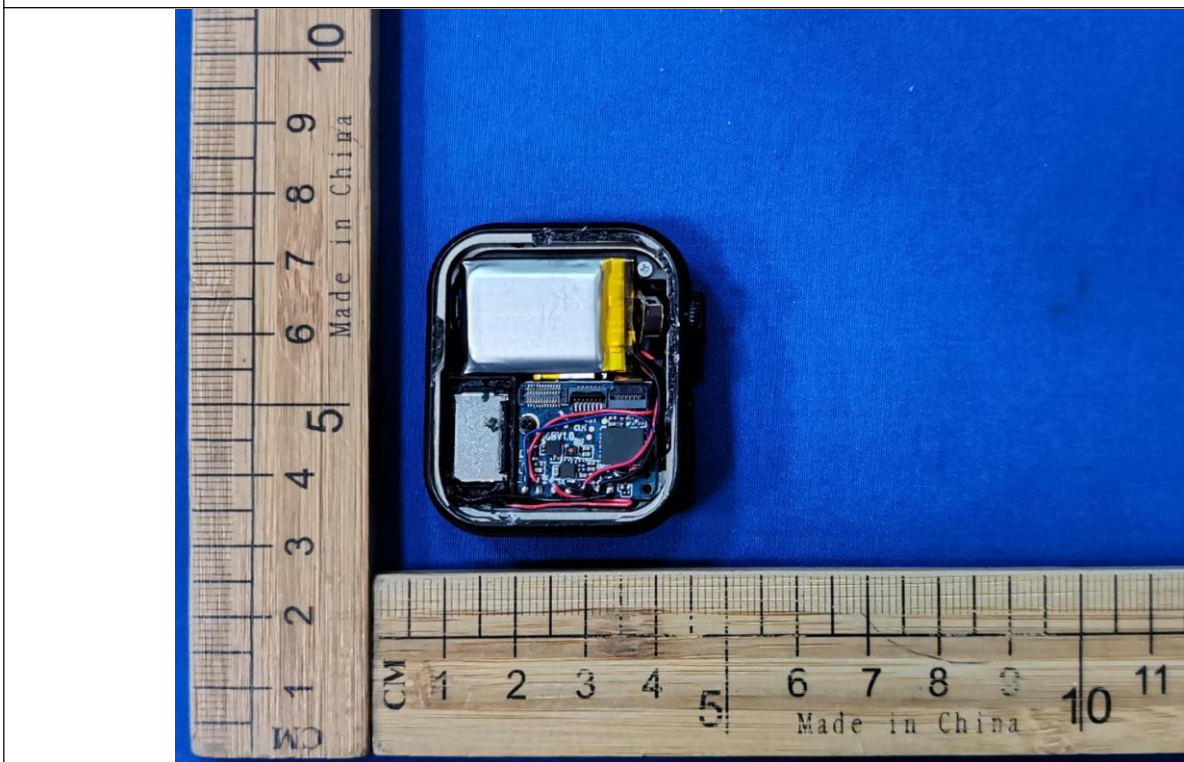


Photo 3

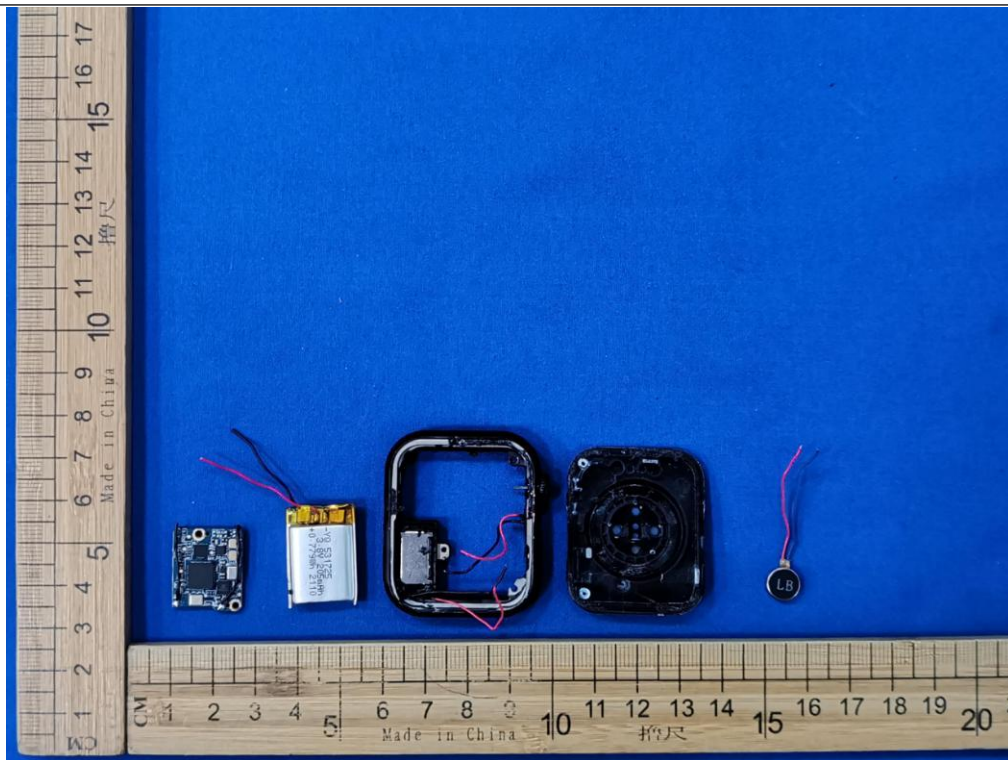


Photo 4

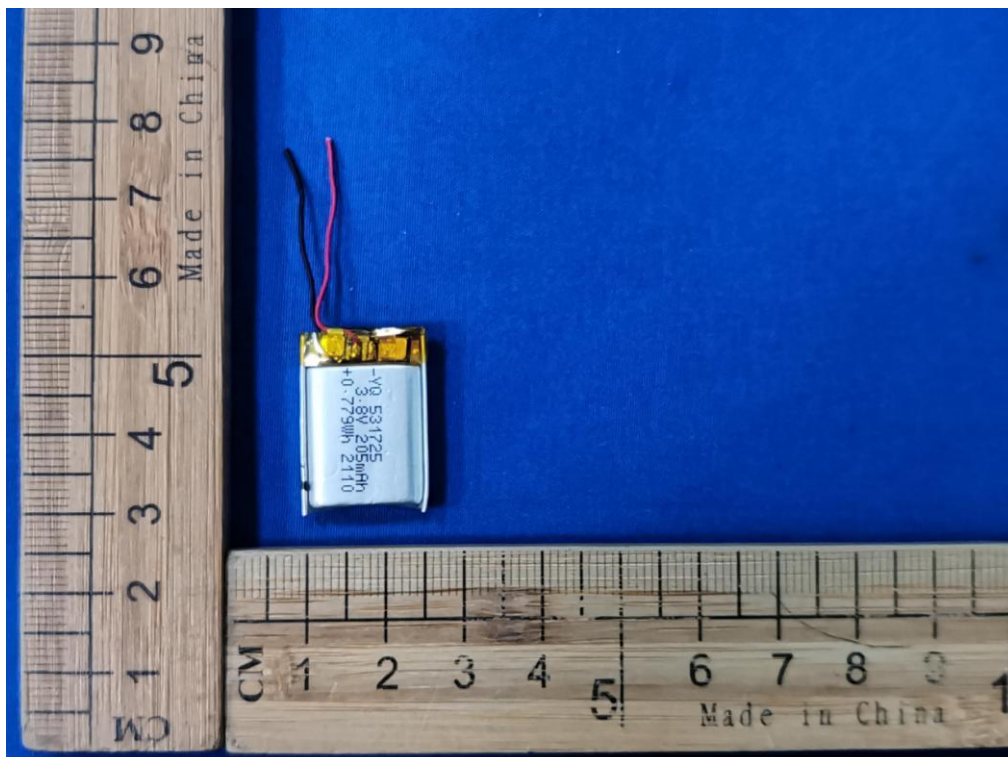


Photo 5

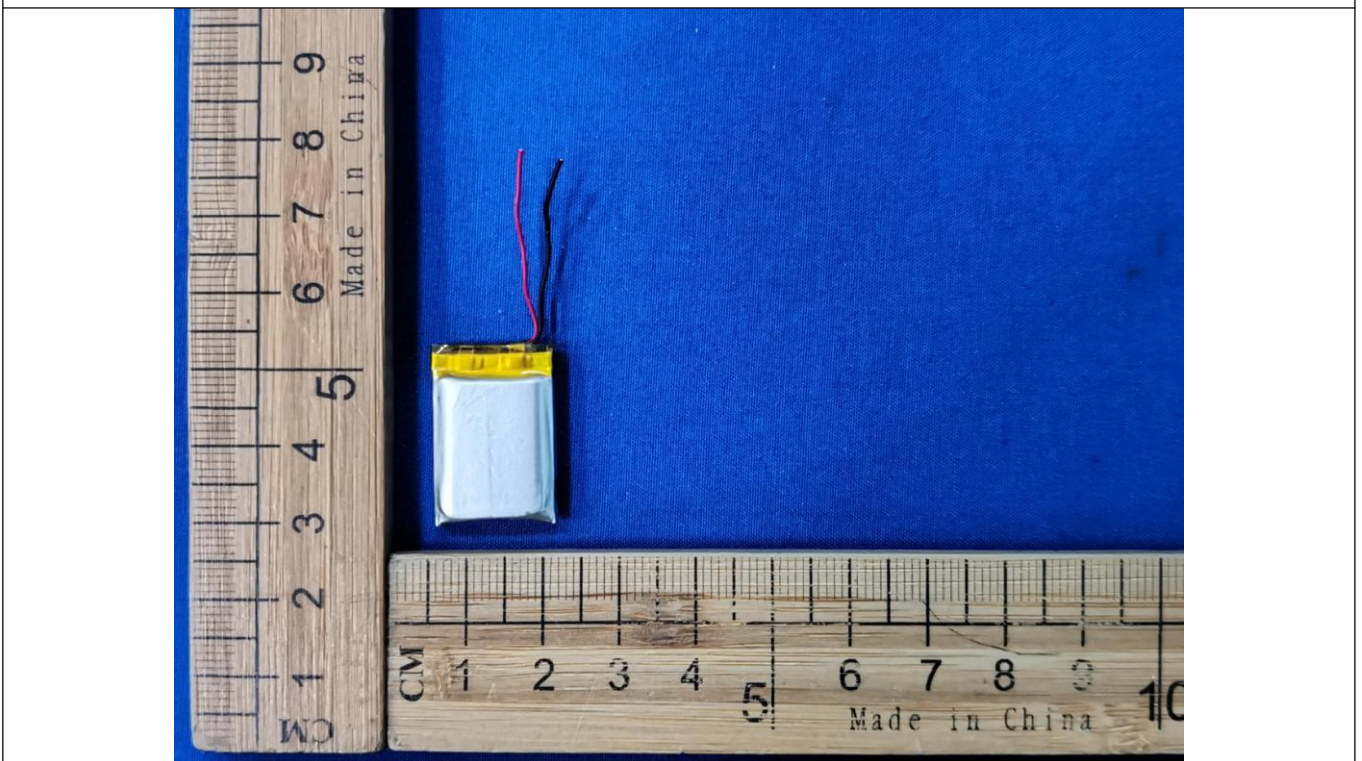


Photo 6

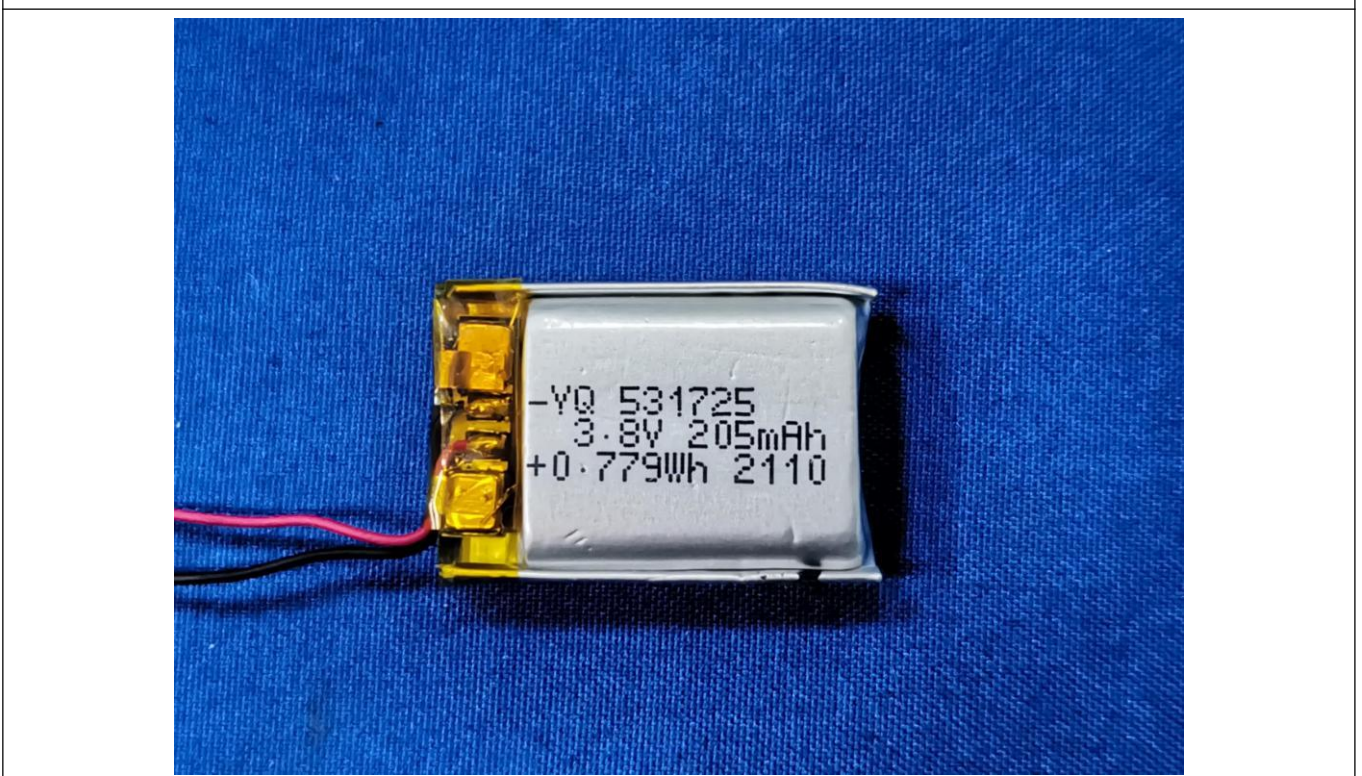


Photo 7

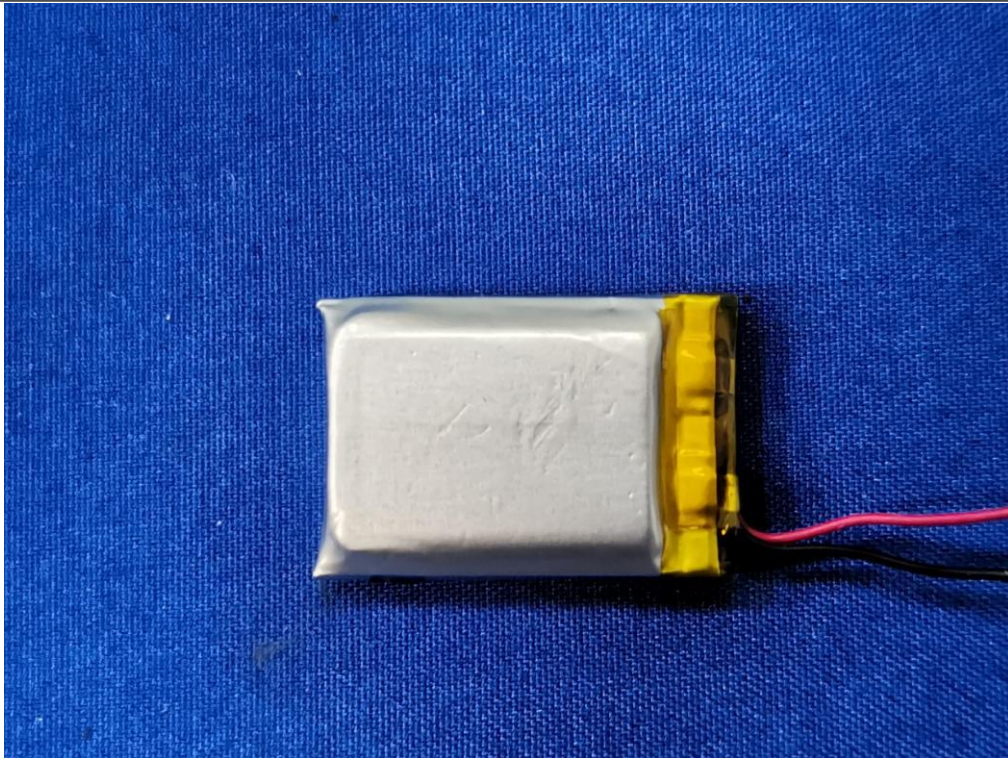


Photo 8

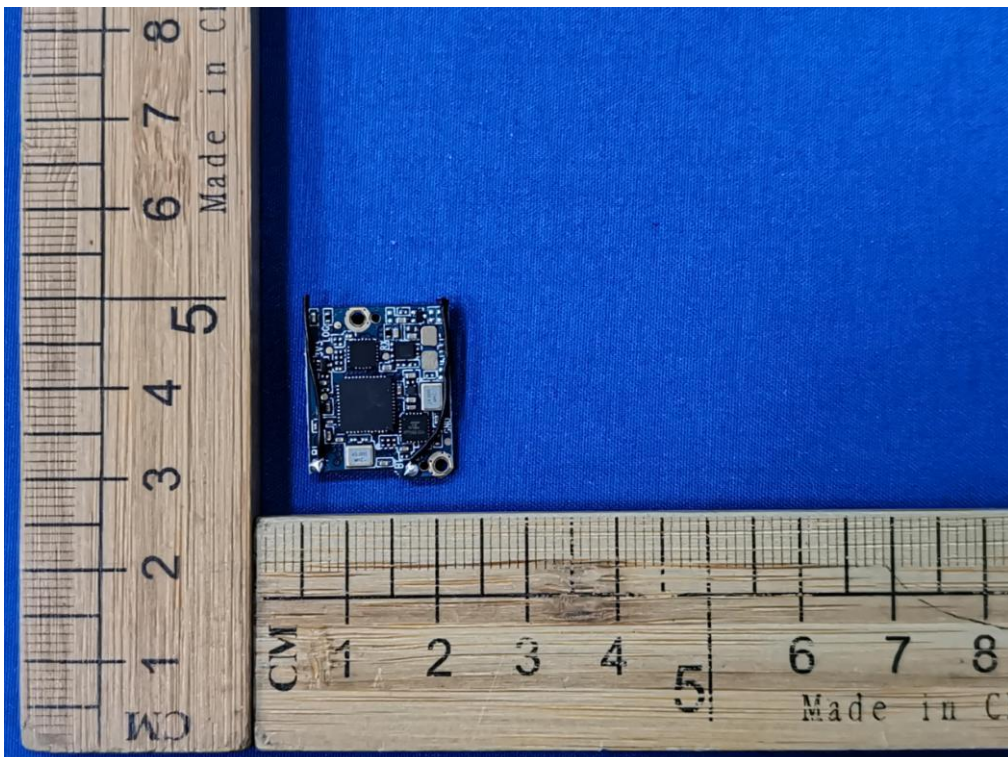


Photo 9

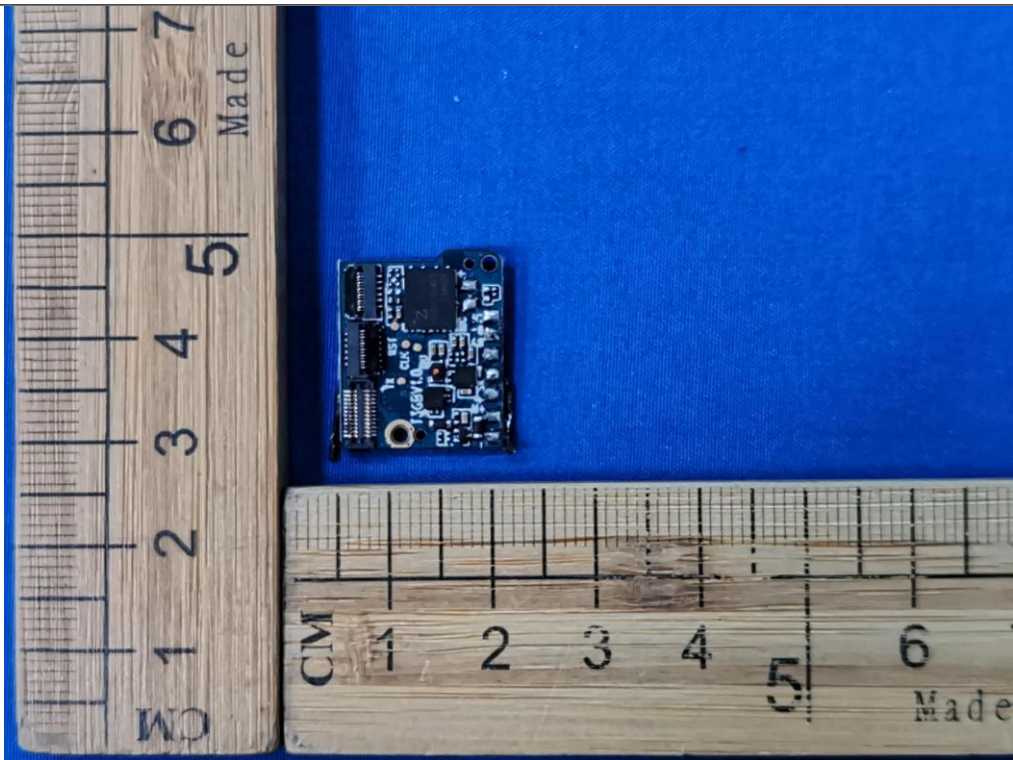


Photo 10

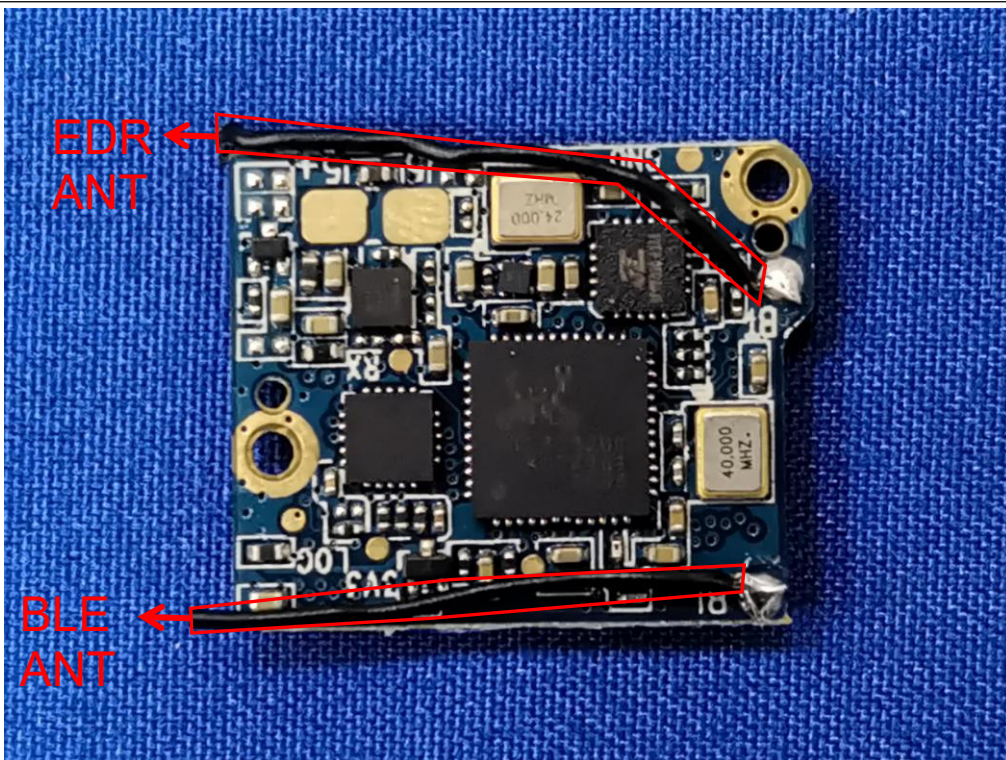


Photo 11

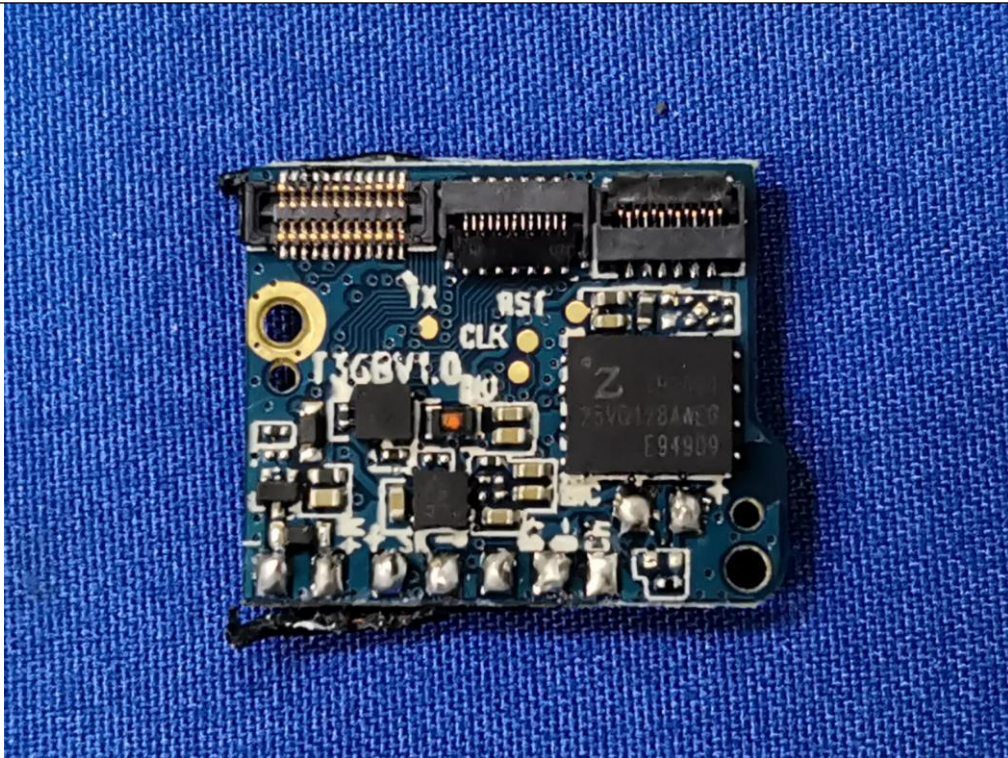


Photo 12

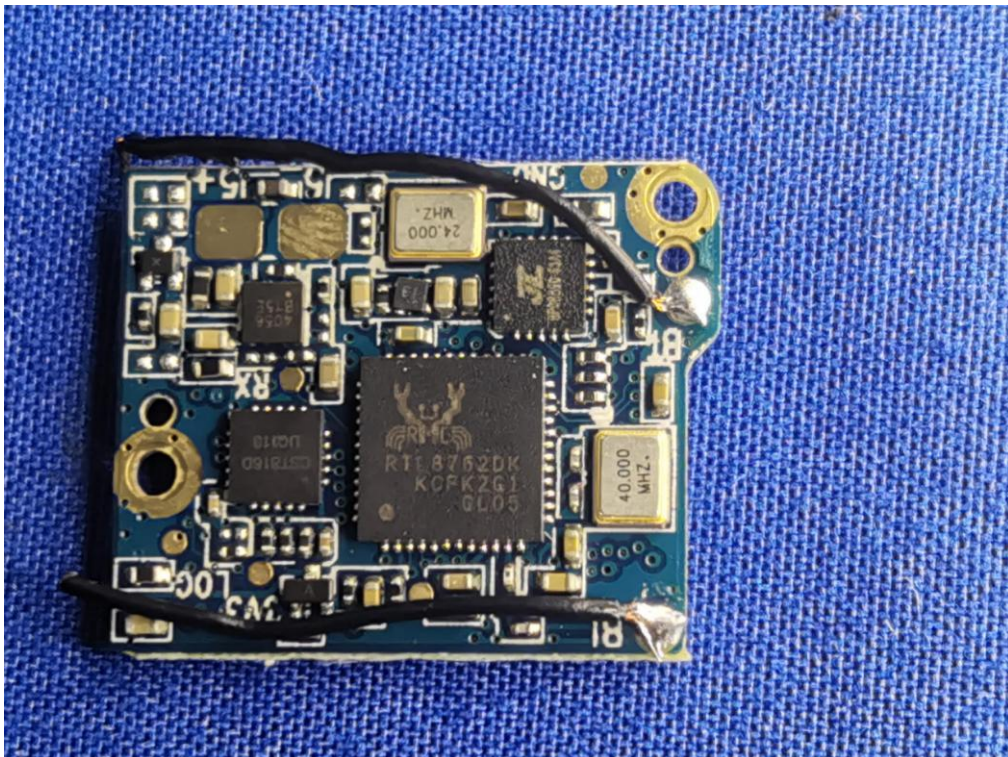
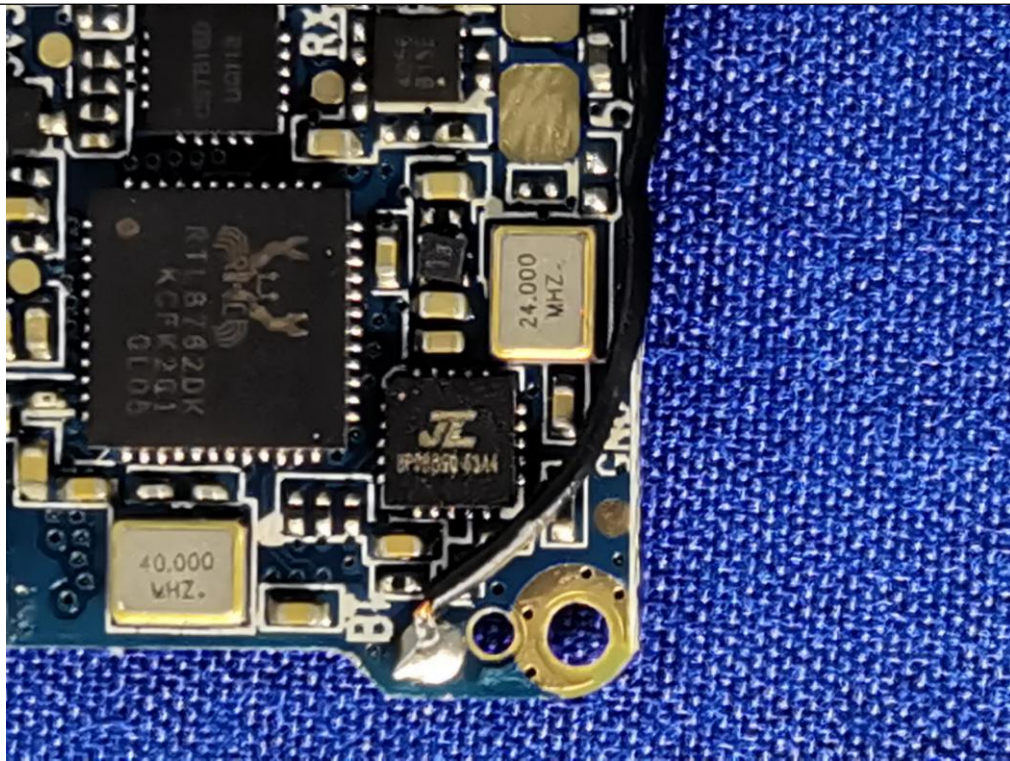


Photo 13



--THE END--