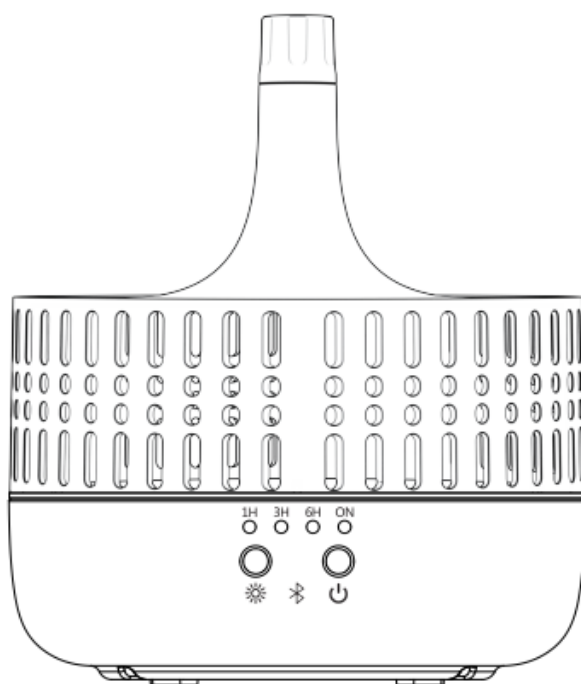


JUNICHY

Essential Oil Diffuser

User Manual



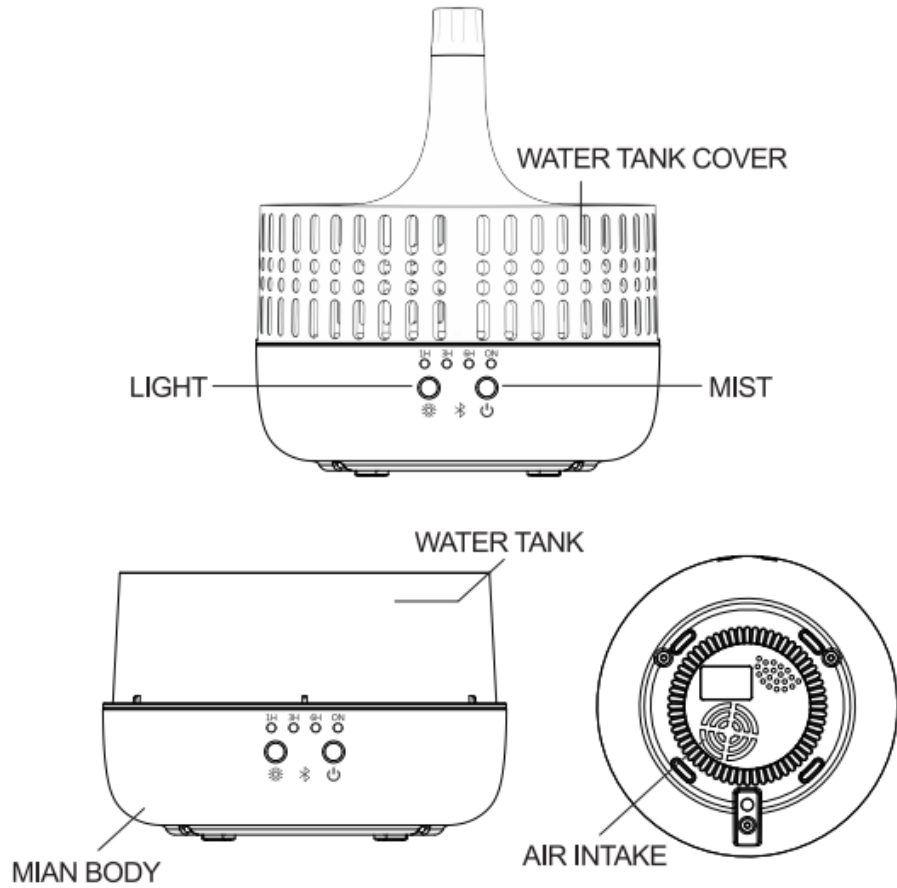
Please read the manual carefully before using
Dear customer, thanks for choosing our products

CONTENTS

| | |
|----------------------|----|
| Product Description | 01 |
| Function Description | 02 |
| Use Steps | 03 |
| Precautions | 04 |
| Maintenance | 05 |
| Important Tips | 06 |
| Troubleshooting | 07 |
| Specification | 08 |
| After-Sales Service | 08 |

PRODUCT DESCRIPTION

The essential oil diffuser uses ultrasonic vibration to evaporate the water and oil in the tank to produce a cool and dry fragrance mist.



| Package Contents: | |
|---------------------------------|----------------|
| 1x 550mL Essential Oil Diffuser | 1x AC Adapter |
| 1x 150mL Measuring Cup | 1x User Manual |

FUNCTION DESCRIPTION

1. After the power is turned on, the diffuser will make a "beep" sound, all the indicators will flash once, and then they will all go out.

2. Power button: Click the power button in the standby state, and continuously click to select the working time of 1 hour, 3 hours, 6 hours. After the selected time, the indicator light will always be on. After entering the humidification state, it will automatically shut down after a "beep".

3. Light button: Click the light tube key in the standby state, and click continuously to adjust the light color. After the selection, the ambient light will always be on.

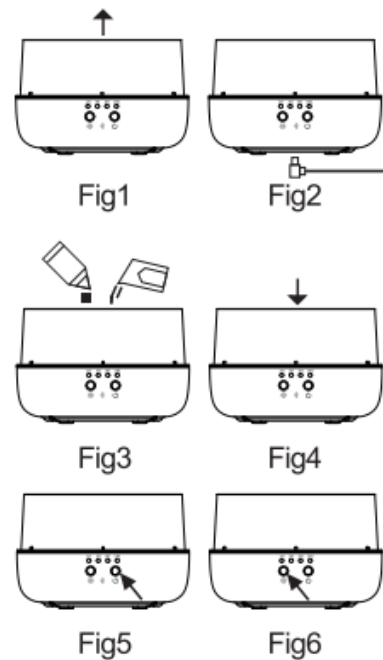
Bluetooth Function: indoor long-distance operation (effective distance of 32.8ft, 23ft if there is an obstacle) open the phone settings, open the Bluetooth channel, select JUNICHY pairing, the pairing connection is successful, it will prompt that the connection is successful, and then you can play the phone For songs and music, adjust the volume plus and minus keys to control the volume.

4. Water shortage protection: If there is a waterless in the water tank during work, the diffuser will automatically shut down.

5. If you do not need to continue working, please unplug and cut off the power supply.

USE STEPS

1. Keep product straight remove the upper lid and water cap vertical direction. Fig1
2. Please connect the AC adaptor to the base of the DC jack of the main body. Fig2
3. Please use the measuring cup to supply water (Do Not add high-temperature water) from the water pipe. Pay attention to the filled water level; do not exceed the max line,(the MAX line is the circle of the inner tank) Please do not add water when the product is working. Drop essential oil into the water tank vertically. Fig3
4. If you want to use this product, please install the cover of the main body vertical direction. Fig4
5. Please connect the AC adaptor with the family user power supply socket.
6. Please "MIST" button, choose the time needed (1H, 3H, 6H or ON continuous spray time). Please press the "MIST" button five times (from 1H, 3H, 6H, ON to OFF). Fig5
7. Press the "Light" button to turn in the LED lights, 7 lights, 7 colors of light change in turn. Press again the "Light" button continuously to select a single light color and brightness. Fig6
8. If you don't use it for a long time, please drain out the water from tank water, dry and then keep it well. If you want to use it again, please use the neutral detergent to clean the water tank again, then you can use it.
9. If lack of water in the tank, even though press the "MIST" button, this machine will still not work.
10. MIST and Light will be off automatically when water runs out.



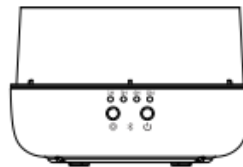
PRECAUTIONS

- The amount and intensity of mist produced will vary, but this is not unusual and should not be considered as a fault.
 - Factors that affect this include water type, humidity, temperature, air currents.
 - Auto power off when water runs out.
 - Applies only 100% natural essential oils, if they contain chemical ingredients, flavors or impurities may cause damage to the diffuser.
 - Before replacing another essential oil, follow the maintenance part of the clean-up products.
5. If you do not need to continue working, please unplug and cut off the power supply.

ACCIDENTAL LEAK

In the event of the unit being knocked over or tipped during use, please follow the steps below to avoid malfunction:

1. plug the unit and remove cover.
2. pour out any remaining water from the water tank.
3. shake the unit gently to drain water and then keep it natural air drying for at least 24hours.

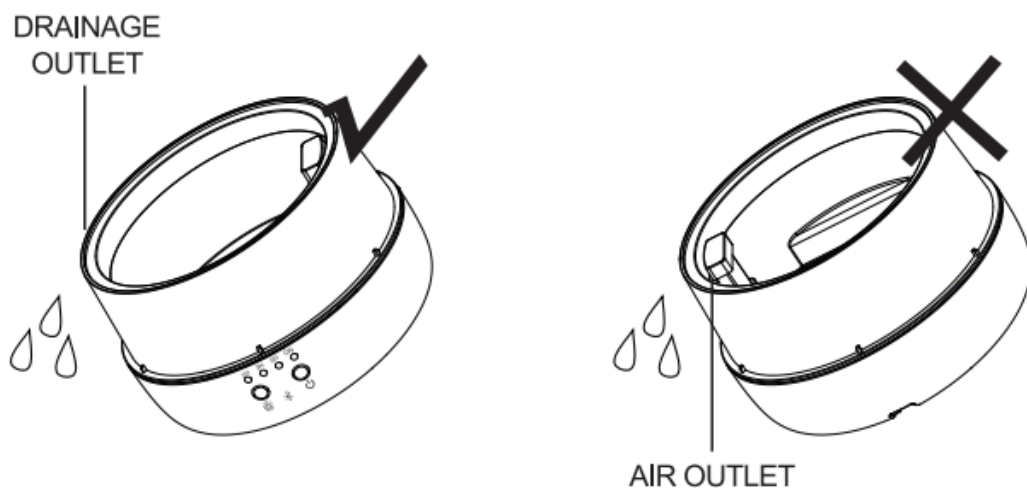


MAINTENANCE

After using 5-6 times, or 3-5days, please clean the product as follow:

1. Unplug the unit from the main supply and remove the cover.
2. Pour out any remaining water from the tank.
3. Add a small amount of warm kitchen detergent remover and water, use a swab to wipe it gently, and then use a cleaning cloth to dry it lightly.
4. Refer to the following pictures, to avoid water flow into the air outlet, pour off water abide by the left picture, not the right one.
5. Do not use other acids or enzymes detergents, as this may give off poisonous gas or cause malfunction.

Note: Be sure to use a mild detergent.



IMPORTANT TIPS

- Please check below to avoid malfunction of the unit:
- Do not fill water over 550ML "MAX" at any time (the MAX line is the circle of the inner tank).
- Do not switch on power when the tank is empty.
- Do not touch the Ultrasonic vibration plate.
- Clean regularly as per Maintenance instructions to avoid malfunction.
- Always unplug from the power supply before maintenance.
- For hygiene reasons, after use, pour away the remaining water from the "DRAIN SIDE" of the tank, and wipe with a clean dry cloth.
- Essential oils can stain, in the event of spillage of contact please wipe away with a soft cloth.
- Only use the measuring cup to add water into the tank, do not refill hot water, and do not fill water directly from the water pipe.
- Do not let mist blow onto furniture, clothing, walls, etc.
- Keep away from directing sunshine heat sources and air conditioners or fans.
- Always keep on stable flat surface do not place on carpet, duvet or unstable area.
- Keep away from electronic equipment, such as TV and Auto equipment.
- Do not tip the product this may cause water to enter the mechanism and cause malfunction.
- Wait 60 minutes before restarting to avoid damage to the Ultrasonic plate.
- Use tap water only does not use mineral water sparkling water etc •Never move product in use.
- Do not touch any part of the product with wet hands.
- Keep out of reach of children and pets, children not being supervised are suggested not play with the product. The appliance is not suitable for children or people with reduced physical, sensory or mental capabilities, or lack of experience and knowledge to be used unless they have been given supervision or instruction.
- Keep cord clear of pathways and do not pull forcefully at any point.
- If smoke or burning smell is detected, unplug immediately.

TROUBLESHOOTING

Please refer to the table below in the event of the product operating abnormally:

| If the product doesn't work well please refer to the following points before requesting repairs: | |
|--|---|
| Will not switch on or switch off | Is there enough water in the tank? ---Please add water to the tank. Is the power cord connected properly? ---Please disconnect, check cables and re-connect carefully. |
| No mist or abnormal mist | Not enough water? or too much water? ---Please add a suitable amount of water to the tank, water must never be filled over "MAX" line. Dirt on the ultrasonic plate? ---Please refer to maintenance instructions to remove and re-install correctly, so vapors can be released freely. Cover and inner cover are not installed properly? Dirt on the air suction port on the underside of the base? ---If too much dust is in the air suction port the mist will be restricted to come out, Just clean it. |
| Will not switch on or switch off | Cover and inner are not installed properly? ---Remove and reinstall correctly, so vapors can be released freely. Low temperature or high humidity? ---Under these conditions, the mist may condense quickly into water droplets. |

SPECIFICATION

| | |
|-----------------------|------------------------|
| Name | Essential Oil Diffuser |
| Input (AC Adapter) | 100-240V~, 50/60Hz |
| Output | DC24V 0.65A |
| Power | 12W |
| Bluetooth | 5.0 |
| Speaker | 4Ω 3W |
| Time Mode | 1H/3H/6H/ON |
| Tank Capacity | 550mL |
| LED light | 7 Color |
| Materials | PP + ABS |
| length of power cable | 150cm |
| Accessories | AC Adapter |

AFTER-SALES SERVICE

JUNICHY is committed to providing better service to customer service, we provide a 30-day refund service, 24-hour online customer service, and 1-year warranty service. If you have any questions, please feel free to contact us.

✉ support@junichy.com



MADE IN CHINA

FCC statement

This device complies with Part 15 of the FCC rules. Operation is subject to the following two conditions:

- 1) This device may not cause interference.
- 2) This device must accept any interference, including interference that may cause undesired operation of the device.

Note: This equipment has been tested and found to comply with the limits for a Class B digital device, pursuant to part 15 of the FCC Rules. These limits are designed to provide reasonable protection against harmful interference in a residential installation. This equipment generates uses and can radiate radio frequency energy and, if not installed and used in accordance with the instructions, may cause harmful interference to radio communications. However, there is no guarantee that interference will not occur in particular installation. If this equipment does cause harmful interference to radio or television reception, which can be determined by turning the equipment off and on, the user is encouraged to try to correct the interference by one or more of the following measures:

- Reorient or relocate the receiving antenna.
- Increase the separation between the equipment and receiver.
- Connect the equipment into an outlet on a circuit different from that to which the receiver is connected.
- Consult the dealer or an experienced radio/TV technician for help.

Changes or modifications not expressly approved by the party responsible for compliance could void the user's authority to operate the equipment.

FCC Radiation Exposure Statement

This device complies with FCC RF radiation exposure limits set forth for an uncontrolled environment. This transmitter must not be co-located or operating in conjunction with any other antenna or transmitter.