

100*80mm
单铜 单黑印刷

Product instruction manual



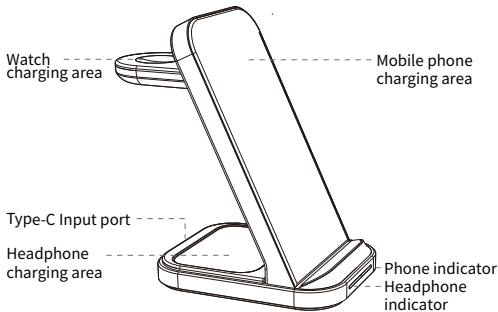
Read this manual carefully before installation and use
Please follow the notices and notes marked in the product manual

1 Product Introduction

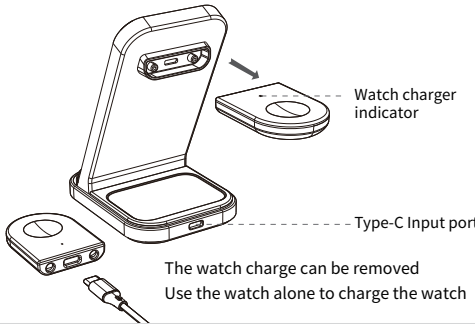
Product Introduction

This 3-in-1 wireless charger is a compact charging cradle that can wirelessly charge three devices with just one wireless charger, starting with your mobile phone, watch, headphones or other devices that support wireless charging. As long as it is placed on the corresponding charging area city, it can automatically wirelessly charge, which can make your desktop cleaner and more convenient to charge. This product is designed to be very space-saving and can help you integrate your electronics well. This product watch charge is removable, can be used alone to charge the watch, charging safely. Adapting to the power, the charging efficiency is greatly increased.

外观简介



Introduction to the watch disassembly function



2 Interrodution Totwoch Di Sassen Bry Finktien

Usage Steps

1. Please connect this wireless charger to the 5V3A, 9V/3A adapter through the Type-c fast charging cable and connect to the source
2. Put the phone in the phone charging area to charge the phone
3. Put the watch in the watch charging area to charge the watch
4. Put the wireless charging Bluetooth headset box in the headphone charging area to charge the headset

Light mode

mode	Headphone indicator	Phone indicator	Watch indicator
Power	Blue to green to blue is always bright	The blue light is always on	The green light is on all the time
Standby	The blue light is always on	The blue light is always on	The green light is on all the time
Charging in the headphone area	Blue light to green light	Blue light standby	The green light is on all the time
Phone area charging	Blue light standby	Blue light to green light	The green light is on all the time
Charging in the watch area	Blue light standby	Blue light standby	The green light is on all the time
Protection features	Blue light flashing	The blue light flashes quickly	The blue light flashes quickly

3 Product parameters

Basic parameters

Name:	3-in-1 wireless charger
Size:	122.5*72*124mm
Material:	ABS+PC
Input:	DC5V/3A 9V/3A
Output (mobile):	5W/7.5W/10W/15W(Max)
Output (headphones):	5W(Max)
Output (watch):	2.5W(Max)
Transmission distance:	≤6mm
Conversion rate:	Slow Charge ≥70% Fast Charge ≥75%
Operating Frequency:	110.5-205KHz

4 Precautions

Applicable devices

Please check whether the phone supports wireless charging. This product supports fast wireless charging function and complies with Qi wireless charging standards; By magnetic induction Enables short-range wireless power transfer.

Adapter selection

When using an adapter with 5V/2A output, the wireless charger supports 5W load. Wireless charger supports 15W load when using QC3.0 compliant adapters;
*To ensure the normal use of the charger, it is recommended to use PD fast charging or QC3.0 compliant adapters

⚠ Precautions

Do not put metal debris or magnetic cards on the charging plate, which may cause the charger to heat up!
Foreign objects should be removed when the foreign body is alarmed!
Slight heat is normal, and the mobile phone battery will heat up during charging!
Do not hold the charger near the source of fire or corrosive environments!

5 Packing list

- Wireless charger X1
- Data cable X1
- Instruction manual X1

FCC Warning Statement

Changes or modifications not expressly approved by the party responsible for compliance could void the user's authority to operate the equipment. This equipment has been tested and found to comply with the limits for a Class B digital device, pursuant to Part 15 of the FCC Rules. These limits are designed to provide reasonable protection against harmful interference in a residential installation. This equipment generates uses and can radiate radio frequency energy and, if not installed and used in accordance with the instructions, may cause harmful interference to radio communications. However, there is no guarantee that interference will not occur in a particular installation. If this equipment does cause harmful interference to radio or television reception, which can be determined by turning the equipment off and on, the user is encouraged to try to correct the interference by one or more of the following measures:

- - Reorient or relocate the receiving antenna.
- - Increase the separation between the equipment and receiver.
- - Connect the equipment into an outlet on a circuit different from that to which the receiver is connected.
- - Consult the dealer or an experienced radio/TV technician for help.