

Smart Water Valve

(Zigbee)

User Manual



Performance and instructions

● Smart water valve

Remote operation: remote control of mobile APP anytime and anywhere, manual control of field devices, and timing control of APP

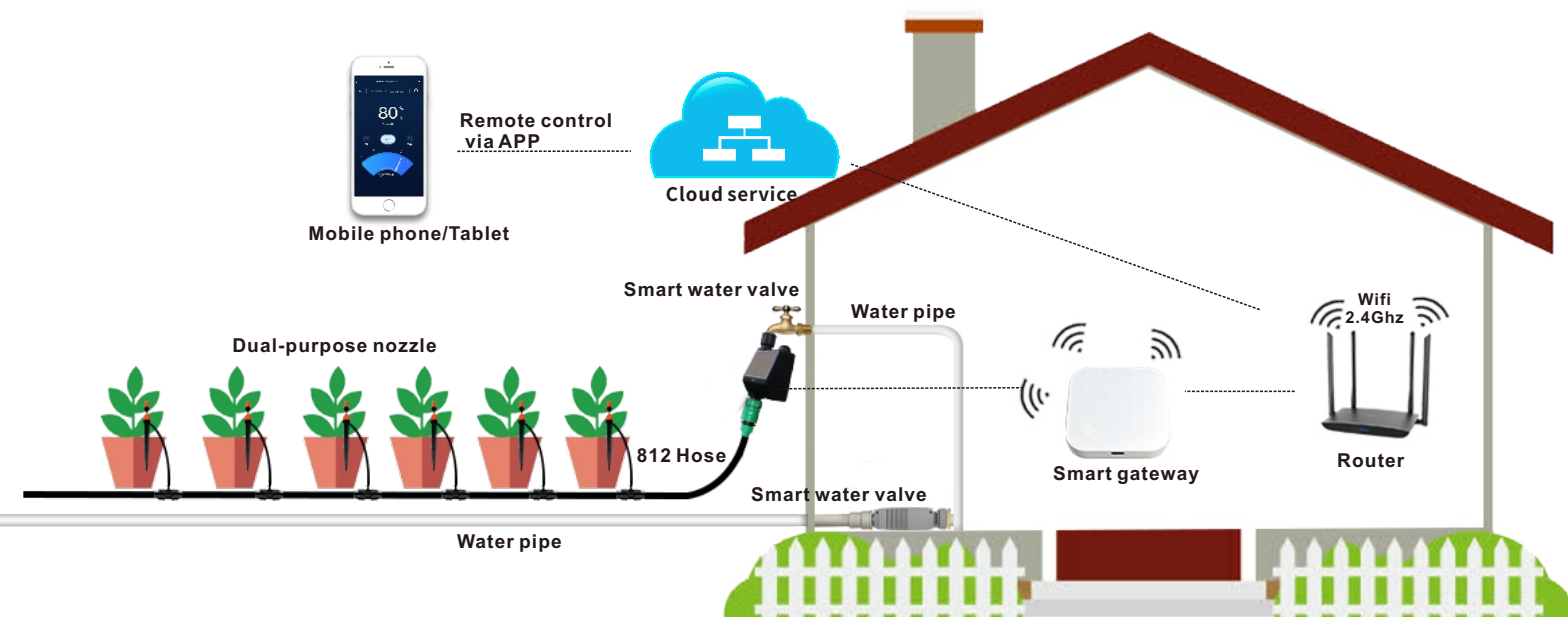
Signal distance: the open distance between gateway and smart water valve is ≤ 50 meters

Battery: 2* AA Ni-MH rechargeable batteries

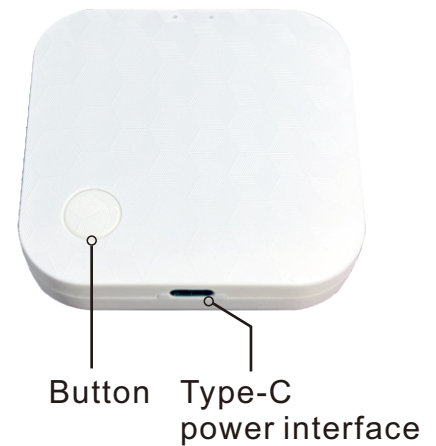
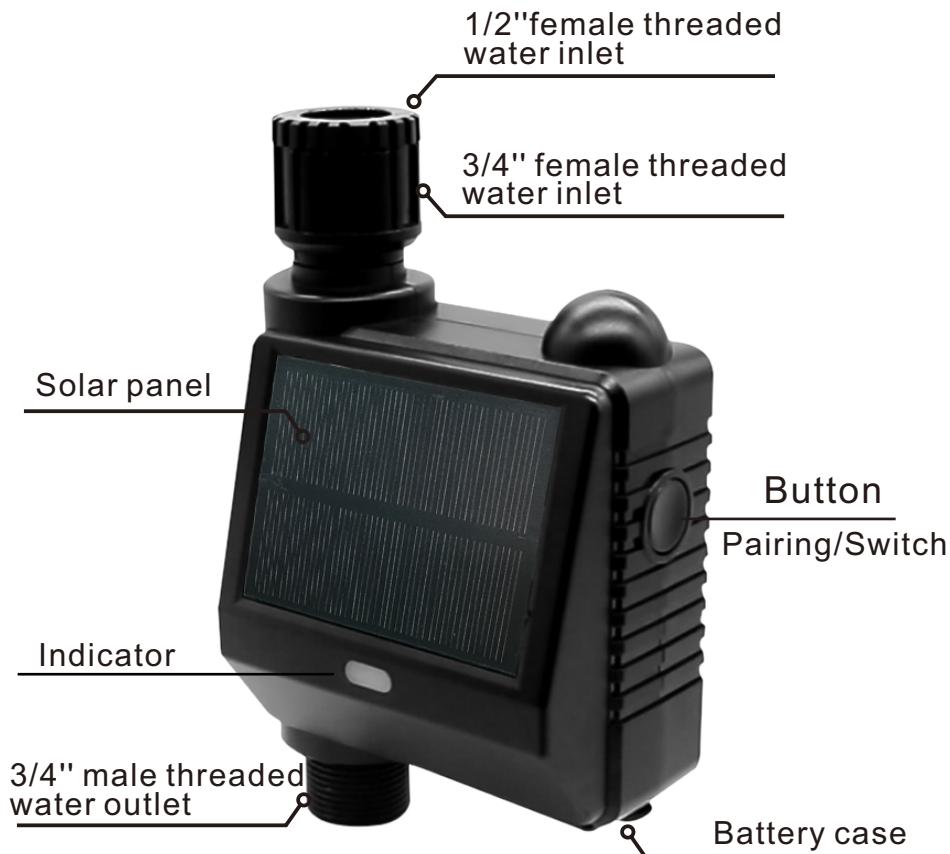
Protection grade: IP66. Smart water valve can be installed and used outdoors.

Instructions for use:

1. One gateway can be connected with 8 smart water valves.
2. The open distance from the gateway to the smart water valve is ≤ 100 meters, (determined according to the actual installation environment).
3. Zigbee signal cannot be relayed and jumped through smart water valve.
4. Please install the timer under the sun, so that the solar panel can power the batteries.
5. The App will record the statistics only if the smart valve is on line.
6. To prevent water into the battery case, please keep the cover closed correctly by screwing the bolts tightly.
7. Winterization protection is needed when temperature is under 0°C , frost damage is not in the warranty coverage.




Product parameters



Smart water valve
(Zigbee)

Smart gateway
(Zigbee)

	
Model	QT-05M
Caliber	1/2" & 3/4"
Waterproof level	Ip66
Withstand water pressure	0~10bar
Power	2* AA Ni-MH rechargeable batteries

	
Product name	QWT-02 (Zigbee)
Operating temperature	-10°C~ +50°C
Working humidity	0-90%RH No condensation
Power	DC5V/1A
Signal range	Open area ≤ 100 meters

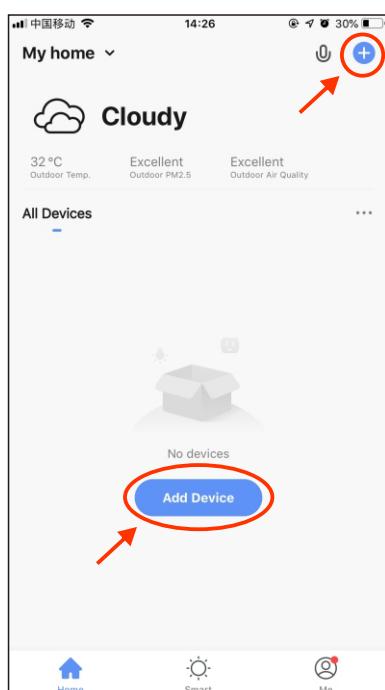
Operation Guide

- ① Scan the QR code to download the “Smart Life” app,
- ② Register a member account.
Input your mobile phone number or email address.
Receive the verification code SMS.
Configure your own password.

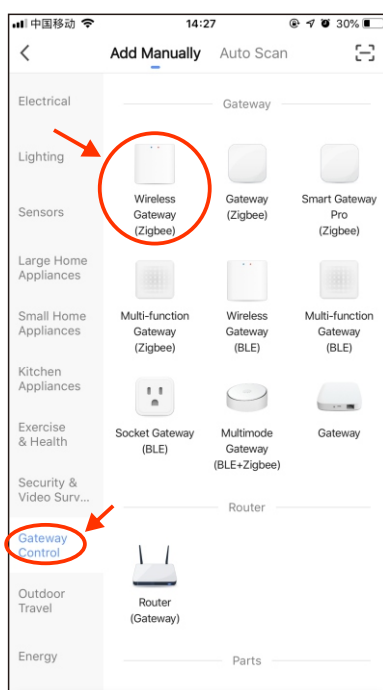


Gateway networking tutorial

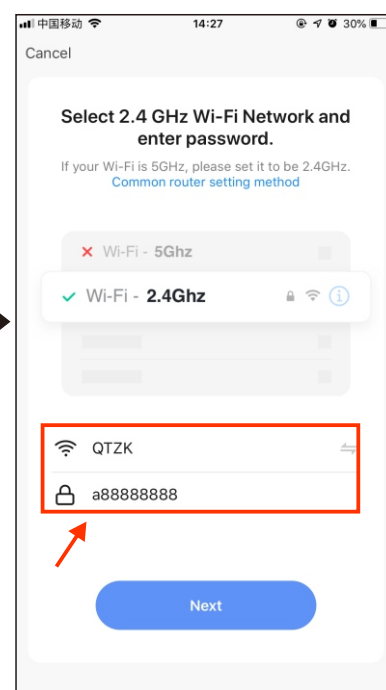
- ① Open the APP and click add device or "+" in the upper right corner,
- ② Select gateway central control → wireless gateway (zigbee),
- ③ Enter WiFi account and password (2.4Ghz),
- ④ Check to confirm that the indicator light is flashing, and EZ mode is in the upper right corner,
- ⑤ Next, enter the interface of adding equipment ,
- ⑥ Wait a moment and add successfully.



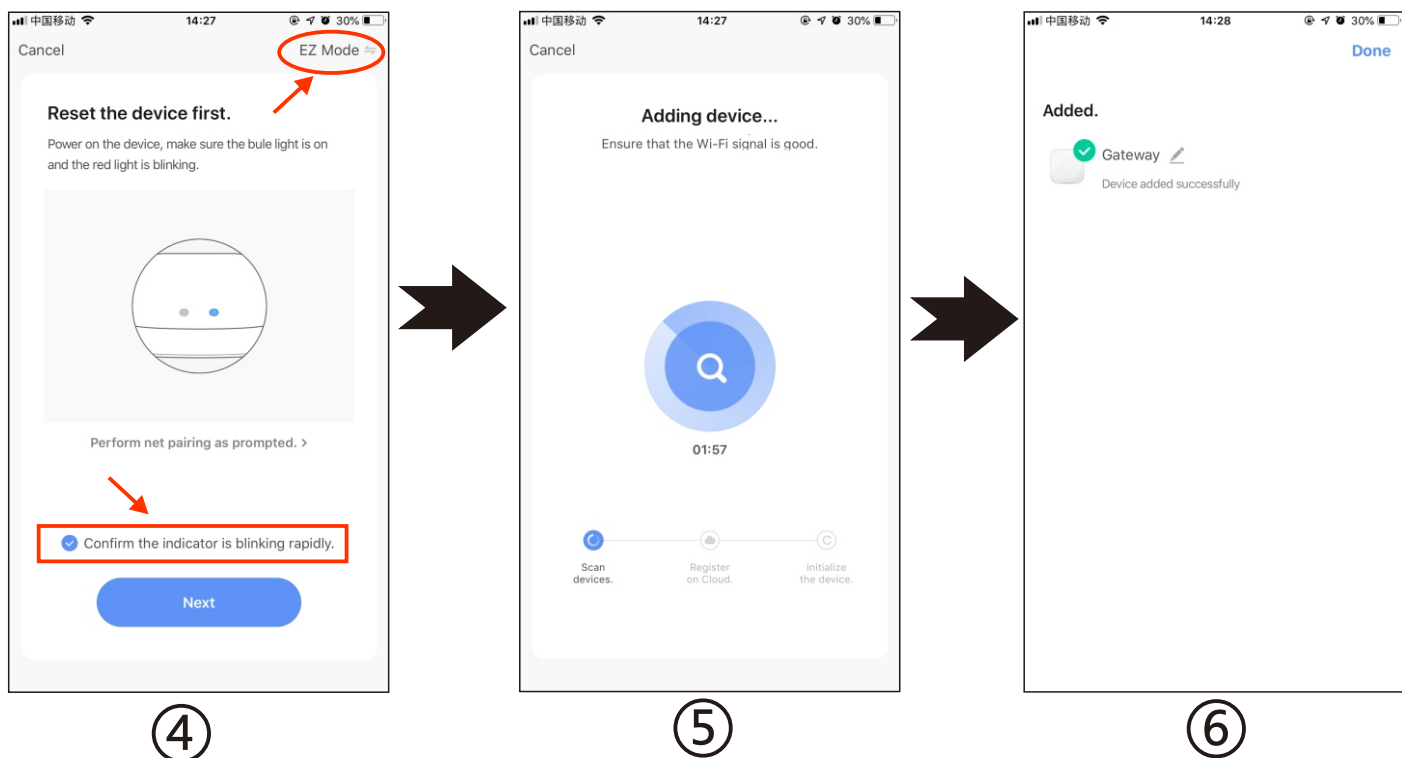
①



②

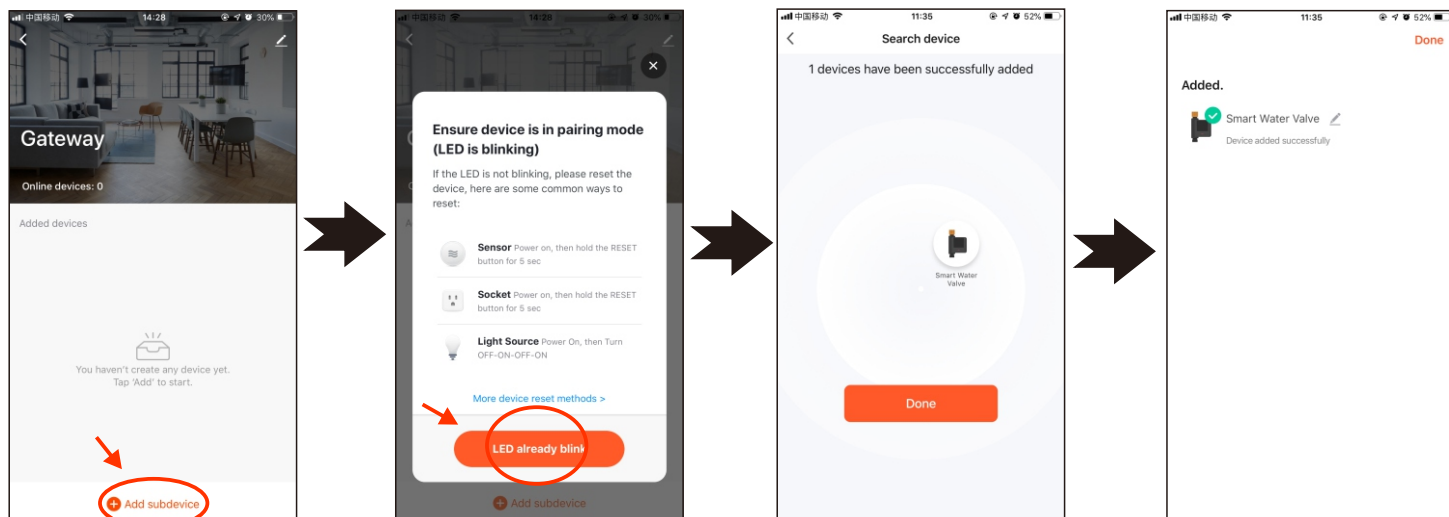


③



Gateway adds and connects intelligent water valve

- ① Open the gateway interface and select "+Add Subdevice".
- ② Confirm whether the indicator light of the intelligent water valve flashes (press and hold the switch button of the intelligent water valve for 5 seconds, and the indicator light switches from long on to flash or extinguish).
- ③ Automatically search for equipment, and click Finish after searching for the equipment.
- ④ If the addition is successful, click the name of the brush to modify it.



Mobile APP Interface

It's easy to understand and operate



Warranty Regulations

1. The warranty period of this product is one year.
2. During the warranty period, any failure occurred under normal use according to the instruction manual (judged by the official staff of our company) shall be repaired free of charge.
3. During the warranty period, if one of the following situations occurs, it must be repaired as a charge:
 - ① This guarantee and valid purchase certificate cannot be provided.
 - ② Faults and damages caused by incorrect use and improper repair by oneself.
 - ③ Failure or damage caused by transportation, moving and falling after receiving goods.
 - ④ Damage caused by other inevitable bad factors.
 - ⑤ Failure or damage caused by equipment soaking in water.
 - ⑥ If the temperature is lower than 0°C, please disassemble and put it back indoors. If the equipment is damaged due to this problem, there is no warranty.
4. We only make the above warranties, and do not make any other express or implied warranties (including implied warranties of merchantability, rationality and adaptability to a specific application, etc.). Our company is not responsible for any special, accidental or indirect damages, whether in contract, civil negligence or other aspects.

Product Warranty Card

Product name: _____

Product model: _____

Ex-factory number: _____

Date of appearance: _____

Customer name: _____

Contact number: _____

Customer address: _____

Warranty contents: _____ After sale: _____

Client signature: _____ ☐ Satisfied ☐ Dissatisfied

Warranty contents: _____ After sale: _____

Client signature: _____ ☐ Satisfied ☐ Dissatisfied

Warranty contents: _____ After sale: _____

Client signature: _____ ☐ Satisfied ☐ Dissatisfied

FCC Caution.

§ 15.19 Labelling requirements.

This device complies with part 15 of the FCC Rules. Operation is subject to the following two conditions: (1) This device may not cause harmful interference, and (2) this device must accept any interference received, including interference that may cause undesired operation.

§ 15.21 Information to user.

Any Changes or modifications not expressly approved by the party responsible for compliance could void the user's authority to operate the equipment.

§ 15.105 Information to the user.

Note: This equipment has been tested and found to comply with the limits for a Class B digital device, pursuant to part 15 of the FCC Rules. These limits are designed to provide reasonable protection against harmful interference in a residential installation. This equipment generates uses and can radiate radio frequency energy and, if not installed and used in accordance with the instructions, may cause harmful interference to radio communications. However, there is no guarantee that interference will not occur in a particular installation. If this equipment does cause harmful interference to radio or television reception, which can be determined by turning the equipment off and on, the user is encouraged to try to correct the interference by one or more of the following measures:

- Reorient or relocate the receiving antenna.
- Increase the separation between the equipment and receiver.
- Connect the equipment into an outlet on a circuit different from that to which the receiver is connected.
- Consult the dealer or an experienced radio/TV technician for help.

RF warning for Mobile device:

This equipment complies with FCC radiation exposure limits set forth for an uncontrolled environment. This equipment should be installed and operated with minimum distance 20cm between the radiator & your body.
