



PMN:LAVA Guitar

LAVA GENIE

60 Seconds to Musical Freedom

Play Your First Chord



STEP 1

Press and hold the first block to select a chord on the touch sensing fingerboard.

STEP 2

Gently tap the TapPad with your thumb. Hear the first chord that you played?



Change Keys

Download LAVA+ App to unlock the Key Change feature.
This is where you change keys.



Play Your First Song

Play along with singing. Each number and color indicates your left hand positions.

You can play either the larger or smaller pad on your right hand.

1	1	4	1
Twinkle	twinkle	little	star
4	1	5	1
How	I wonder	what	you are

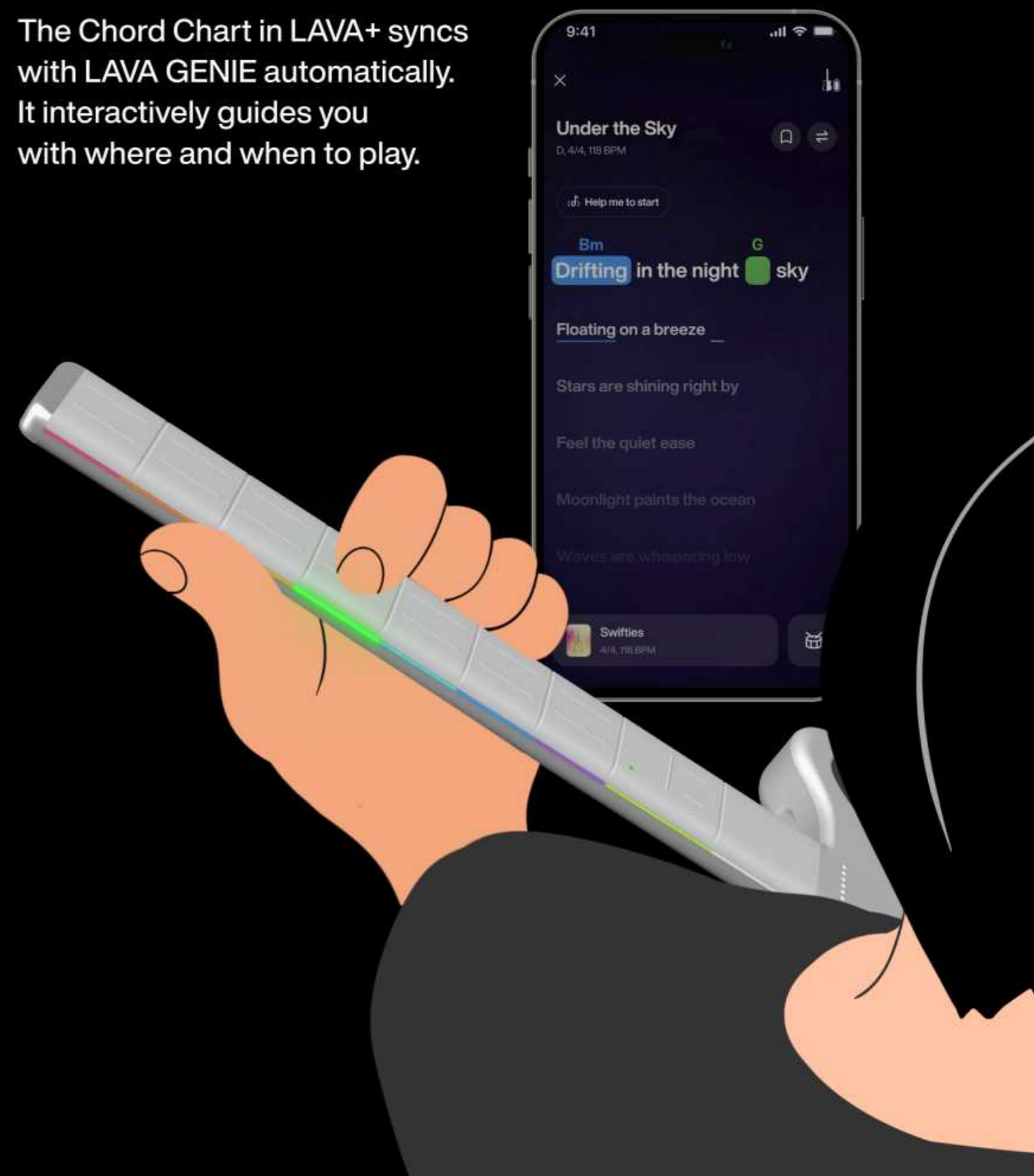


10,000+ SONGS on LAVA+ App



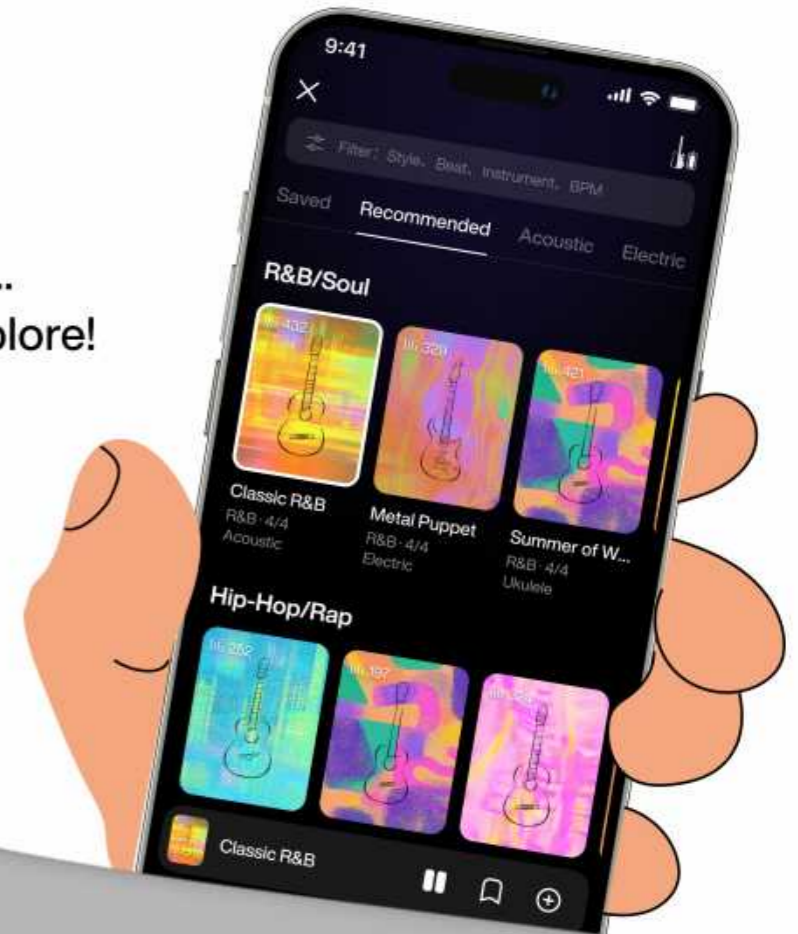
Learn with Guiding Lights

The Chord Chart in LAVA+ syncs with LAVA GENIE automatically. It interactively guides you with where and when to play.

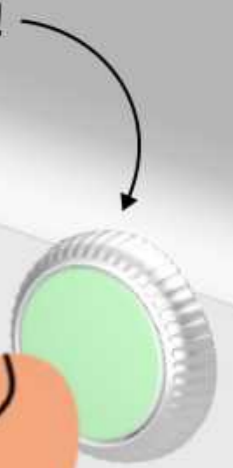


Explore Sounds with Presets

Acoustic, Electric, Nylon...
Guitar, Piano, Synth...
Pop, Hiphop, R&B, EDM, Rock...
Download LAVA+ App and Explore!



Press to Switch Presets!



Unlock More Freedom with Arpeggios

STEP 1

Press and hold the a Block with your left hand to select chords.

STEP 2

Gently Swipe through.

Turn on drums and bass with Rhythm Section

Tap Tempo. Evenly tap 3 times for the speed of a song to adjust the overall tempo.

- Turn on the auto drums and bass
- More complex
- Play an outro

Mute everything!

Unleash Imagination with Creative Mode

STEP 1

Grab and squeeze to switch between auto and creative mode.

STEP 2

Freely try it yourself.
Or check out how others may play on LAVA+

STEP 3

Construct your own playing patterns on LAVA+





Optional Wireless Mic is coming!!

Perform with **LAVA GENIE**

Line out Supported!



FCC Caution:

This device complies with part 15 of the FCC Rules. Operation is subject to the following two conditions: (1) This device may not cause harmful interference, and (2) this device must accept any interference received, including interference that may cause undesired operation.

Any changes or modifications not expressly approved by the party responsible for compliance could void the user's authority to operate the equipment.

NOTE: This equipment has been tested and found to comply with the limits for a Class B digital device, pursuant to Part 15 of the FCC Rules. These limits are designed to provide reasonable protection against harmful interference in a residential installation. This equipment generates, uses and can radiate radio frequency energy and, if not installed and used in accordance with the instructions, may cause harmful interference to radio communications. However, there is no guarantee that interference will not occur in a particular installation. If this equipment does cause harmful interference to radio or television reception, which can be determined by turning the equipment off and on, the user is encouraged to try to correct the interference by one or more of the following measures:

- Reorient or relocate the receiving antenna.
- Increase the separation between the equipment and receiver.
- Connect the equipment into an outlet on a circuit different from that to which the receiver is connected.
- Consult the dealer or an experienced radio/TV technician for help.

The device has been evaluated to meet general RF exposure requirement. The device can be used in portable exposure condition without restriction.

ISED Statement

English: This device contains licence-exempt transmitter(s)/receiver(s) that comply with Innovation, Science and Economic Development Canada's licence-exempt RSS(s). Operation is subject to the following two conditions:

- (1) This device may not cause interference.
- (2) This device must accept any interference, including interference that may cause undesired operation of the device.

The digital apparatus complies with Canadian CAN ICES-3 (B)/NMB-3(B).

French: Cet appareil contient des émetteurs/récepteurs exempts de licence qui sont conformes aux RSS exempts de licence d'Innovation, Sciences et Développement économique Canada.

L'exploitation est soumise aux deux conditions suivantes :

- (1) Cet appareil ne doit pas provoquer d'interférences.
- (2) Cet appareil doit accepter toute interférence, y compris les interférences susceptibles de provoquer un fonctionnement indésirable de l'appareil.

L'appareil numérique du ciem conforme canadien peut - 3 (b) / nmb - 3 (b).

This device meets the exemption from the routine evaluation limits in section 2.5 of RSS 102 and compliance with RSS 102 RF exposure, users can obtain Canadian information on RF exposure and compliance.

Cet appareil est conforme à l'exemption des limites d'évaluation courante dans la section 2.5 du cnr - 102 et conforme avec rss 102 de l'exposition aux rf, les utilisateurs peuvent obtenir des données canadiennes sur l'exposition aux champs rf et la conformité.

This equipment complies with Canada radiation exposure limits set forth for an uncontrolled environment.

Cet équipement est conforme aux limites d'exposition aux rayonnements du Canada établies pour un environnement non contrôlé.

The device has been evaluated to meet general RF exposure requirement. This equipment should be installed and operated with minimum distance 0mm between the radiator & your body.

L'appareil a été évalué pour répondre aux exigences générales d'exposition aux RF. Cet équipement doit être installé et utilisé avec une distance minimale de 0 mm entre le radiateur et votre corps.

This radio transmitter has been approved by Industry Canada to operate with the antenna types listed with the maximum permissible gain indicated. Antenna types not included in this list, having gain greater than the maximum gain indicated for that type, are strictly prohibited for use with this device.

Le présent émetteur radio a été approuvé par Industrie Canada pour fonctionner avec les types d'antenne énumérés ci-dessous et ayant un gain admissible maximal. Les types d'antenne non inclus dans cette liste, et dont le gain est supérieur au gain maximal indiqué, sont strictement interdits pour l'exploitation de l'émetteur.