

BLUE LAVA
AirFlow Wireless Charger

Multi-purpose for vertical charging and holding.

Foldable design, easy to carry.

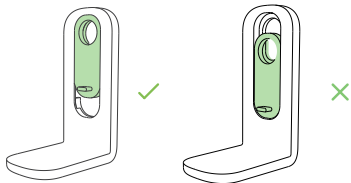
Content

BLUE LAVA AirFlow Wireless Charger
Wireless Charging Accessory

BLUE LAVA TYPE-C Interface PD Charging Adapter (optional)
Type C Charging Cable (optional)

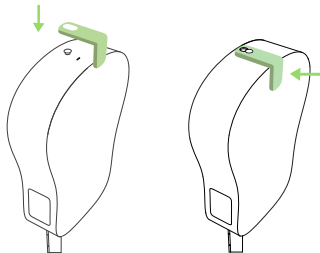
1

Adjust the slider of the wireless accessory to the state shown on the left, so that the two circular holes overlap. Note that when the wireless accessory is in the state shown on the right, it cannot be connected correctly.



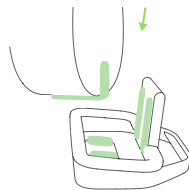
2

Accurately insert the hole of the wireless accessory into the Type-C charging jack. Then, gently push it further until the end pin is reached so that the back of the accessory fits against the guitar back panel. It is installed on the bottom of the guitar body.

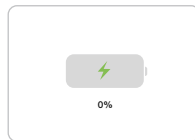


3

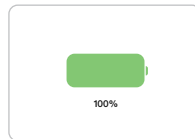
For charging, please attach the wireless accessory to the groove on the back of the charger. Make sure that the accessory can slide down together with the guitar body in a direction as given by the arrow until it comes in full contact with the bottom.



4



Later, an interface showing charging status will appear in the screen.



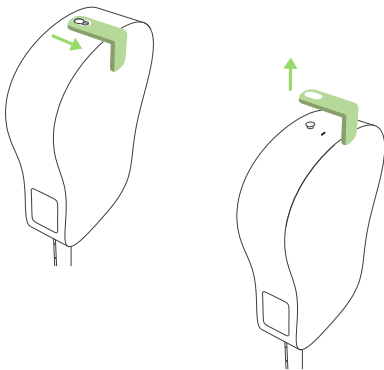
When the battery icon shows full, it indicates that the charging is complete.

*The detection will be complete within 3-5 seconds after proper placement, and the screen will display normal charging.

5

For disassembly, gently push the wireless accessory backwards to separate it from the back board of the guitar.

* In the case of using the guitar's strap button or wired charging, the wireless accessory must be removed first.



Safety & Operation

1. To avoid damage caused by improper operation, please do not disassemble without professional assistance;
2. Do not drop, burn, tread on, or expose to high- concentration industrial chemicals, etc.;
3. The product is designed to operate within -20°C to 35°C as it contains high-sensitivity electronic components. In the case of exposure to high temperature or sweltering heat for an extended period, the electronic components may stop to operate, and will resume the operation when the temperature is back to normal.
4. Please use the adapter and cable supplied by LAVA MUSIC or use an adapter that complies with the PD protocol and meets applicable national/regional regulations and international/regional safety standards.

General Troubleshooting Tips

No alert tone for charging

1. Please wait a few seconds after inserting the guitar
2. If the guitar system shows that it is charging, please confirm whether the system volume is turned on
3. If the guitar system does not show the charging status, please take out the guitar and place it in the center of the charger

Cannot charge even when placed correctly

1. Check if the adapter and charging cable are working properly
2. Observe the heat dissipation holes on both sides of the charger. When the blue light flashes, the red light stays on, or when there is no light, it indicates abnormal functions. Please take out the guitar and place it in the center of the charger
3. Please contact LAVA MUSIC for after-sales technical support

Product Parameters

Wireless Charger/Wireless Charging Accessory

Color	Black
Material	Fireproof Polycarbonate/Reinforced Nylon
Interface type	TYPE-C
Charging mode	Contact less wireless charging
Input	9V 2A max (18W PD)
Output	5V 2A max (10W)

Dimensions:

Wireless Charging Accessory

104mm*43mm*68mm

Wireless Charger

Folded:293.5mm*217mm*55mm

Expanded:293.5mm*217mm*140mm

BLUE LAVA TYPE-C Interface PD Charging Adapter (optional)

Operating voltage and current:9V 2A / 5V 3A max

Type C Charging cable (optional)

Length: 2m Current: 3A

LAVA MUSIC One-year Warranty

Warranty Period LAVA MUSIC provides warranty for the materials and workmanship of hardware products and accessories in the package, with a term of one year from the date of initial retail purchase by the end-user purchaser.

Services Normal wear and tear, and damage caused by accidents or improper use are not covered by LAVA MUSIC's warranty. To reach customer service, please contact us at service@lavamusic.com for detailed information and terms. The services provided depend on the country or region where they are requested from. It is possible that services are available only in the country or region of initial purchase. According to the location, international shipping may cause extra costs.

Repairs When you raise a valid service request within the warranty period, LAVA MUSIC will decide at its own discretion whether to repair, replace, or offer a refund for your product. Warranty benefits are supplemented to the rights provided by local consumer protection laws. In accordance with the provisions of the warranty, proof of purchase may be required when claiming.

FCC Statement

This device complies with part 15 FCC Rules. Operation is Subject To the following two conditions:

(1) This device may not cause harmful interference, and (2) this device must accept any interference received, including interference that may cause undesired operation. Changes or modifications not explicitly approved by the party responsible for compliance could void the user's authority to operate this equipment.

Note: this equipment has been tested and found to comply with the limits for a Class B digital device, pursuant to part 15 of the FCC Rules. These limits are designed to provide reasonable protection against harmful interference in a residential installation. This equipment generates, uses and can radiate radio frequency energy and, if not installed and used in accordance with the instructions, may cause harmful interference to radio communications. However, there is no guarantee that interference will not occur in a particular installation. If this equipment does cause harmful interference to radio or television reception, which can be determined by turning the equipment off and on, the user is encouraged to try to correct the interference by one or more of the following measures:

- Reorient or relocate the receiving antenna.
- Increase the separation between the equipment and receiver.
- Connect the equipment into an outlet on a circuit different from that to which the receiver is connected.
- Consult the dealer or an experienced radio/TV technician for help.

FCC radiation exposure

The equipment complies with FCC radiation exposure limits set forth for an uncontrolled environment. During the operation of device a distance of 15 cm surrounding the device and 20 cm above the top surface of the device must be respected.