

三合一天线规格书

3-in-1 antenna specification

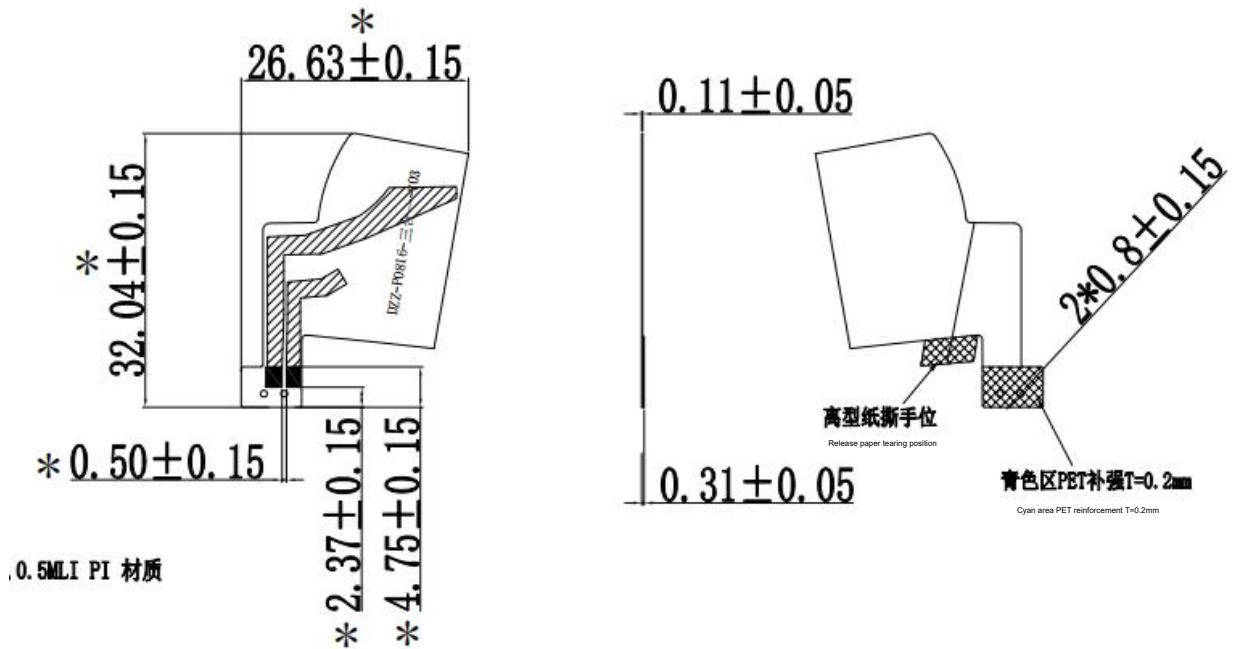
基本信息

General information

制造商 Manufacturer	Be-comfortable
天线型号 Model Name	P0816-GPS&WIFI&BT ant
日期 Date	2024.10.10
版本 Version	1.0
制造商地址 Vendor address	Building C6, Hengfeng Industrial City, Zhoushi Road, Xixiang Town, Baoan District, Shenzhen

天线外观

Antenna Appearance



技术规格

Technical Specifications

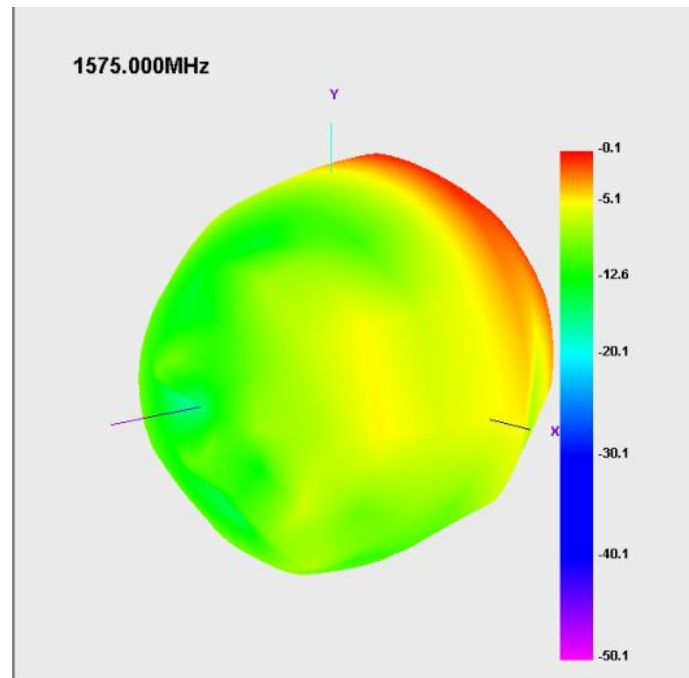
频率范围 Frequency Range	1575.42MHZ+2400-2500MHZ~5150-5850MHZ
天线类型 Antenna Type	PIFA
尺寸 Dimensions	32.04*26.63mm
阻抗 Impedance	50 ohm
最大增益 Maximum Gain	2.83dbi
驻波比 VSWR	≤ 3
.....

Efficiency and gain

Frequency (MHz)	Gain (dBi)	Efficiency (%)
1545	-0.29	34.54
1555	-0.17	35.66
1565	-0.28	37.13
1575	-0.09	37.95
1585	-0.14	36.89
1595	-0.21	35.22
1605	-0.34	32.96

Frequency (MHz)	Gain (dBi)	Efficiency (%)	Frequency (MHz)	Gain (dBi)	Efficiency (%)
2400	2.29	36.12	5100	2.77	41.27
2410	1.87	35.32	5200	2.74	45.15
2420	2.29	37.17	5300	2.69	40.73
2430	2.23	36.45	5400	2.48	39.88
2440	2.36	36.9	5500	2.83	39.77
2450	2.39	37.05	5600	2.73	40.57
2460	2.11	36.13	5700	2.28	40.53
2470	2.27	35.44	5800	2.3	39.62
2480	2.16	35.25	5900	2.32	40.71
2490	2.2	35.33			
2500	2.01	34.57			

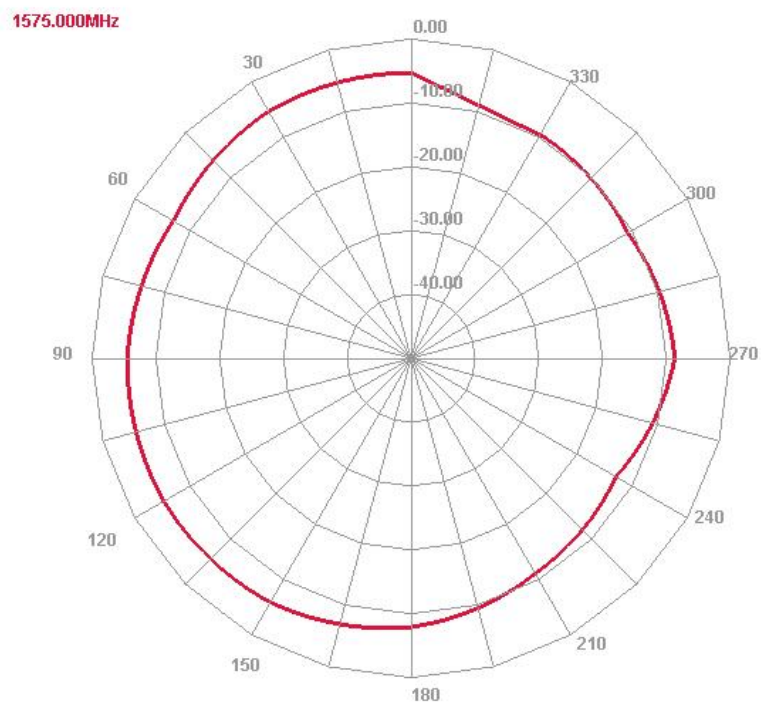
Free space 3D radiation pattern



Free space 2D radiation pattern

X-Y Plane
H Theta=90

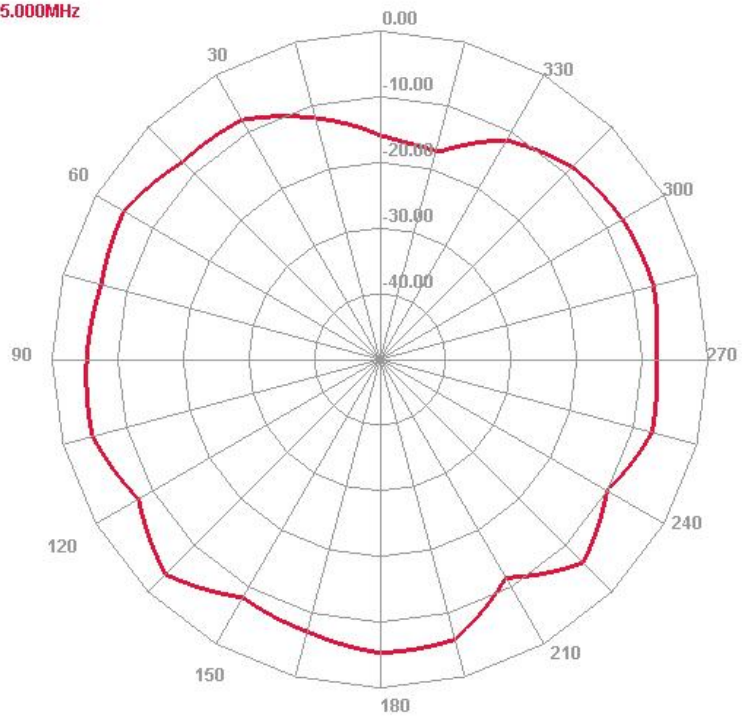
Horizontal



X-Z Plane V Phi=0

E1 Face

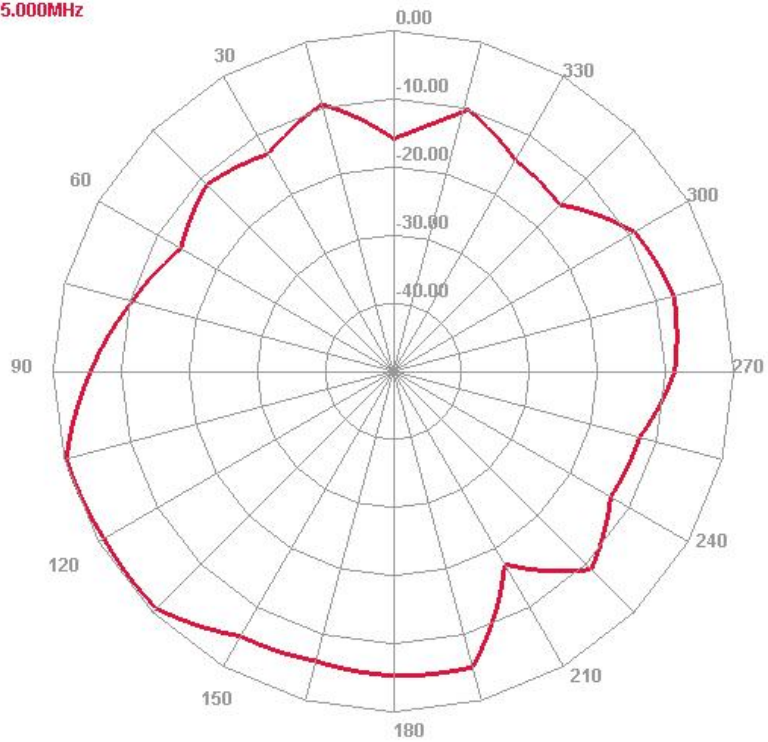
1575.000MHz

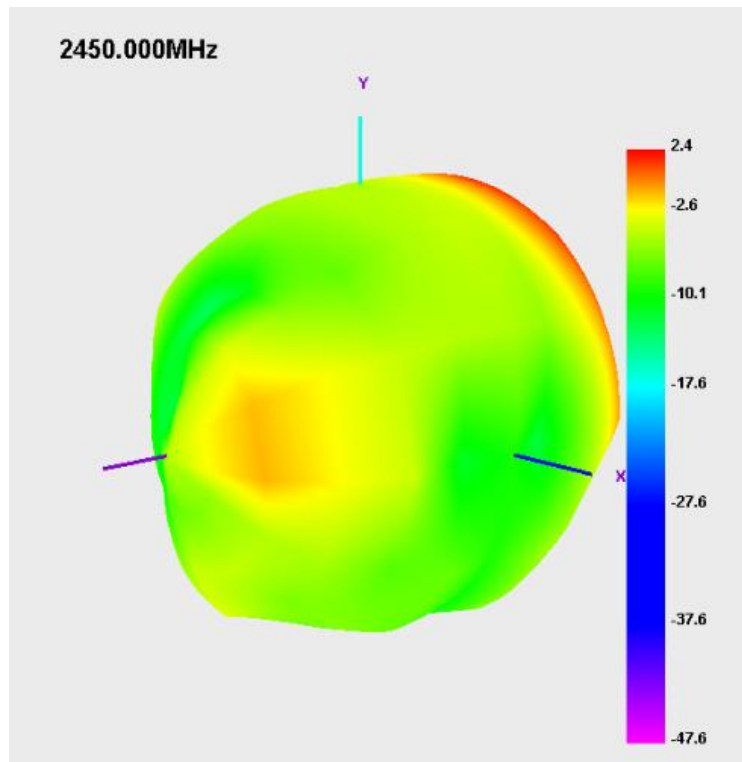


Y-Z Plane V Phi=90

E2 Face

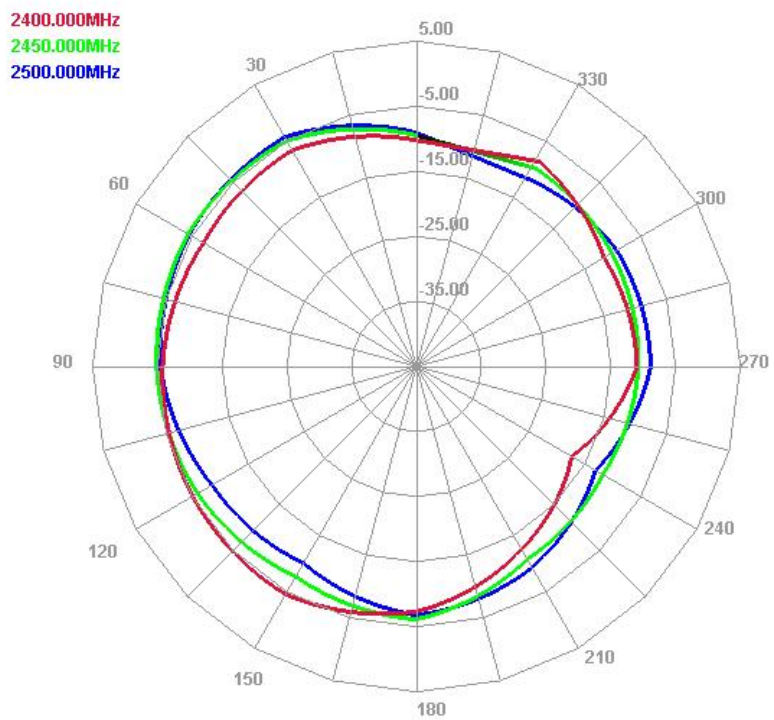
1575.000MHz





**X-Y Plane
H Theta=90**

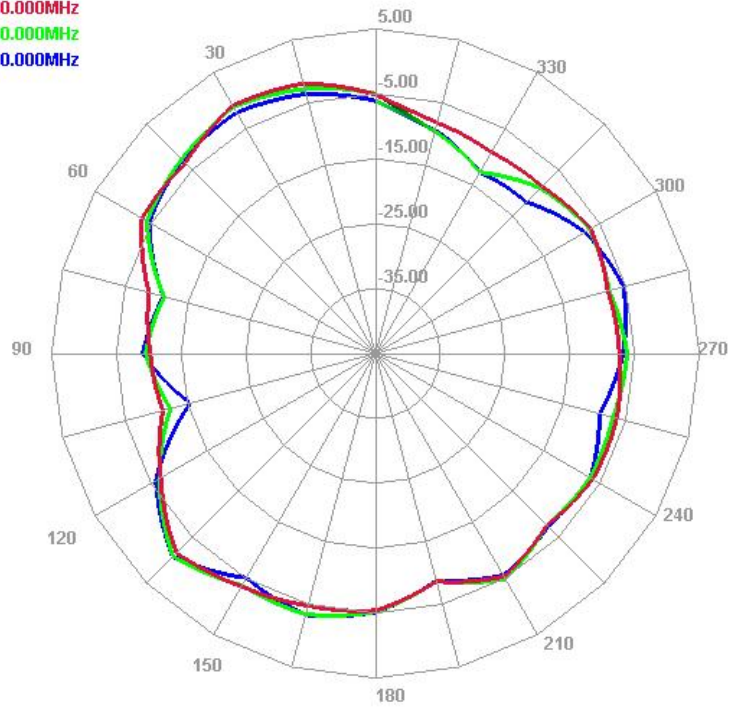
Horizontal



X-Z Plane V Phi=0

E1 Face

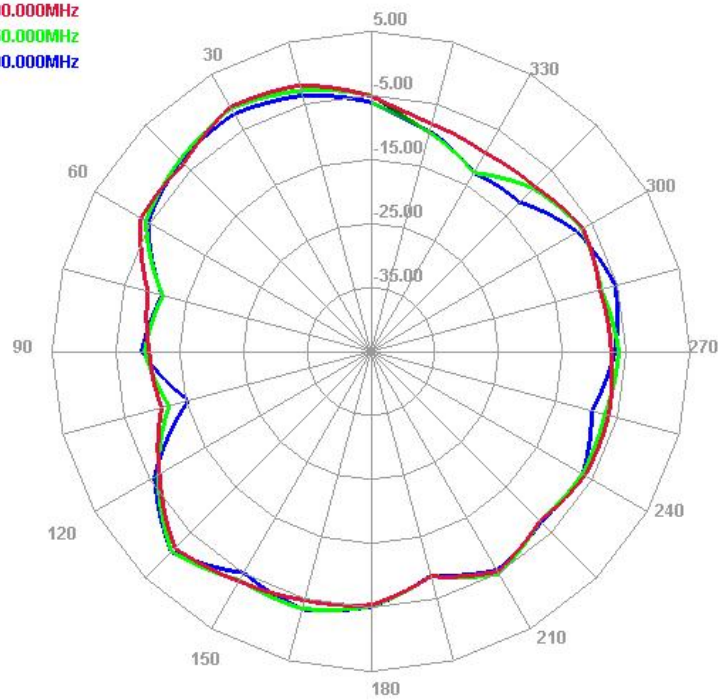
2400.000MHz
2450.000MHz
2500.000MHz

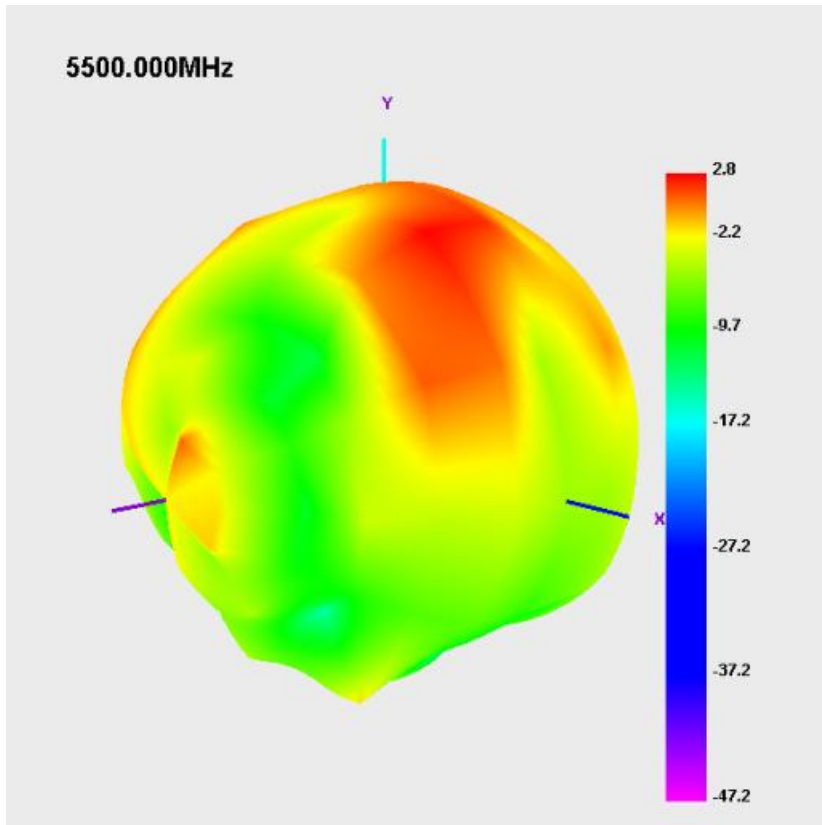


Y-Z Plane V Phi=90

E1 Face

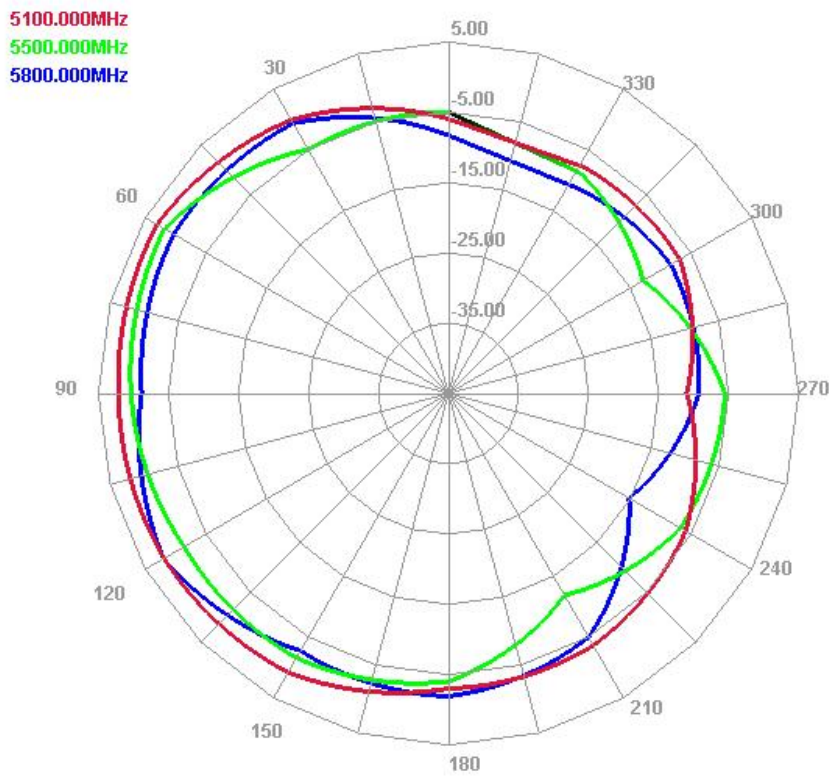
2400.000MHz
2450.000MHz
2500.000MHz





**X-Y Plane
H Theta=90**

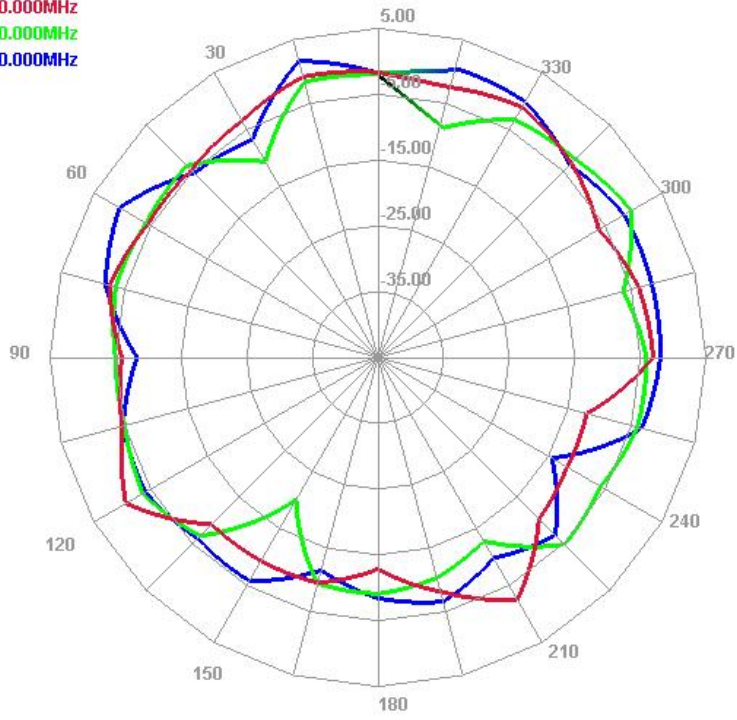
Horizontal



X-Z Plane V Phi=0

E1 Face

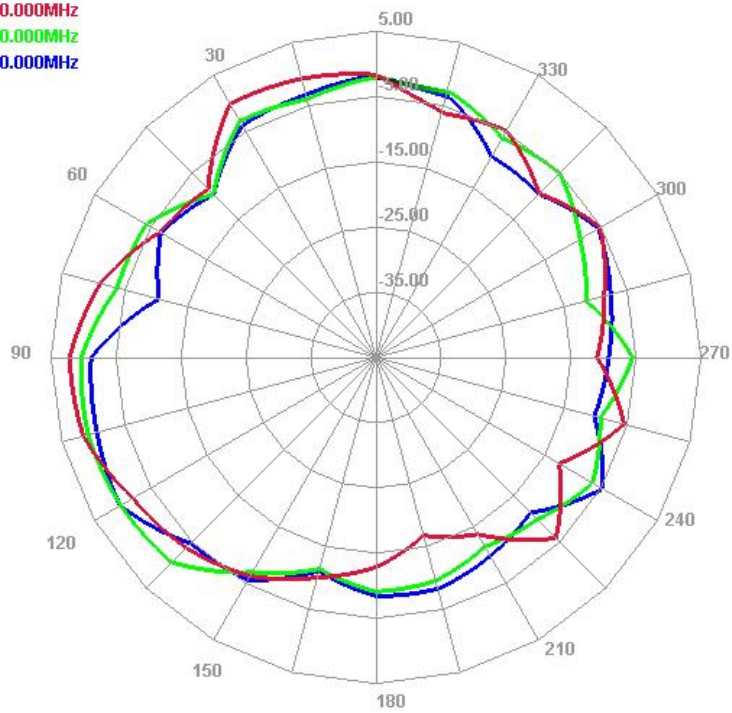
5100.000MHz
5500.000MHz
5800.000MHz



Y-Z Plane V Phi=90

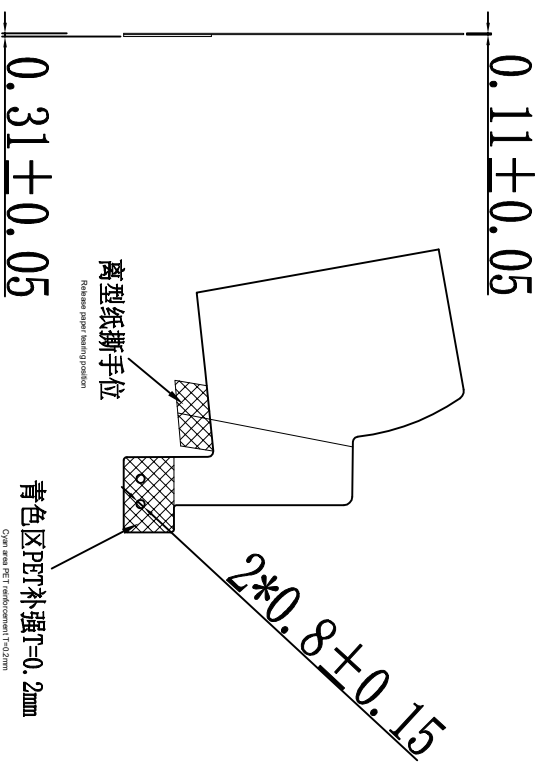
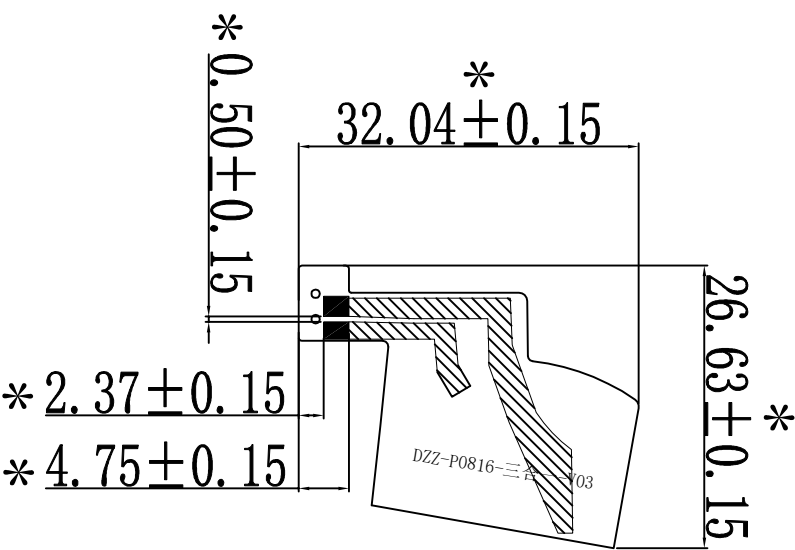
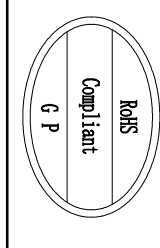
E2 Face

5100.000MHz
5500.000MHz
5800.000MHz



有源数据
OTA (TRP TIS)

WIFI OTA测试		WIFI OTA test	
测试频段 Test frequency	信道 Channel	TRP	TIS
WIFI 11b (11M)	1	14.98	-85.67
	7	14.65	-85.21
	13	14.6	-84.69
WIFI 11a (54M)	36	11.57	-73.6
	149	12.04	-73.75
	165	11.58	-73.37



Rev	Description	Date	Remark
1	New drawing		

Third Angle											
0~10	±0.05	○	0.02	Project	P0816	Date	2024.8.20	深圳得自在科技有限公司 SHEN ZHEN Be Comfortable CO., LTD			
10~18	±0.10	◎	∅0.03	Part Name	Transition assembly	Designed by					
18~30	±0.12	⊥	0.02	Part No.	F01-7156-R0A	Checked by	MD 田进				
30~40	±0.15	∇	0.04	Material	FPC	Approved by	RF 冯惠平				
40~	±0.20	Angle	±0.5°	DWG No.		Unit	mm	Scale	1:1	Rev	A