

Smart Security Kit

User Manual

H400

I. General Description (Subject to actual packaging)

1.1 What's in the Package

Security Panel



The central hub of the alarm system. It connects all the devices to the APP, so you can stay in control of your home from anywhere.

Entry Sensor



Alerts you when a door or window is opened.

Controller



Allows you to remotely control the alarm system to quickly enter Home, Away, Disarm, and SOS modes.

RFID



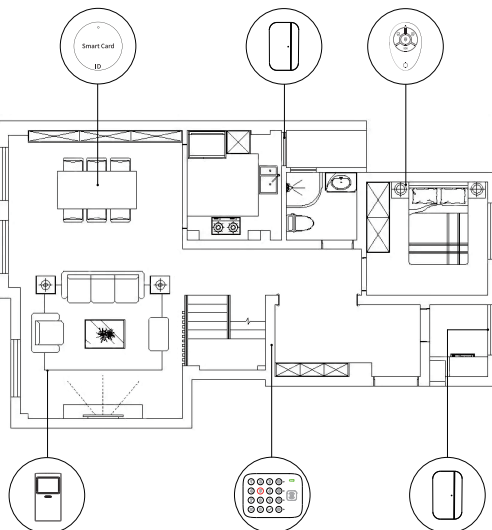
Allows you to quickly disarm the system.

Motion Detector



Alerts you when any movement detected.

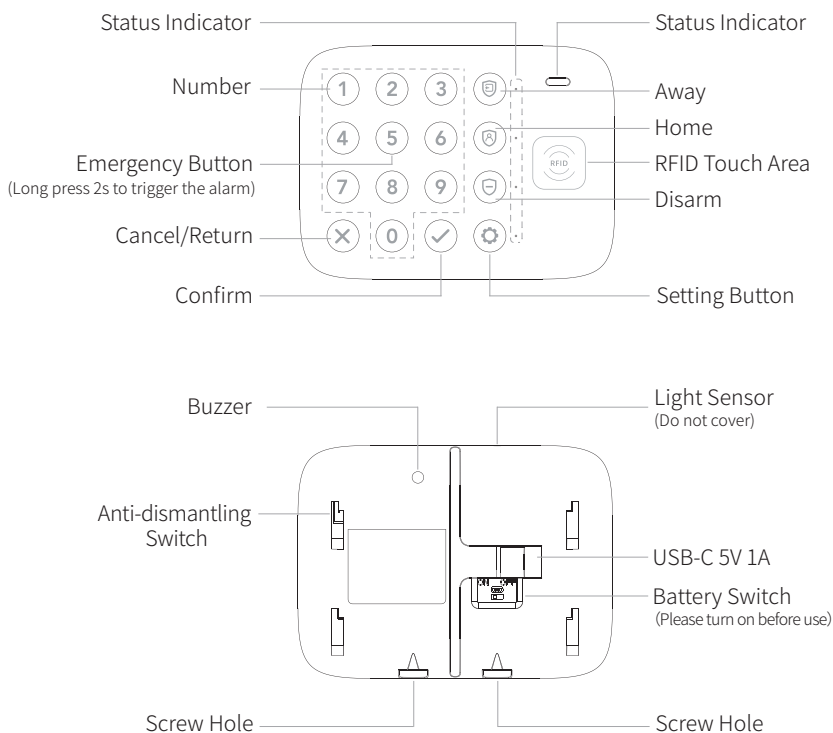
1.2 Home Installation Diagram



II. Main Features

- Stylish appearance
- Wireless connection
- APP remote control
- Light sensor
- Built-in 3.7V/1500mAh lithium battery
- Power supply: Type-C 5V 1A
- Low voltage reminder
- Anti-tampering alarm
- Multi-user password
- Support RFID tags, up to 6
- Support obfuscated passwords, up to 12 digits

III. Appearance Design



Default Code

Default Admin Code: **9876**; User 1 Code: **1234**

User 2-6: Not Enabled

IV. Power Indicator

Status Color	Solid	Fast Flash	Slow Flash (Once per second)	Slow Flash (Once per 5 second)	Breathing light
Red	/	Alarming	Delay Alarming	Security panel low battery (when powered only by battery and the security panel is in standby mode)	/
Yellow	External power supply (Battery switch off)	WiFi Connecting	WiFi Disconnected	/	/
Green	Security panel activated	/	/	Security panel in standby mode (Battery powered only)	Security panel in standby mode (when external power is connected)

V. Set up Smart Life APP

5.1 Download APP -Smart Life



Apple APP Store



Google Play Store

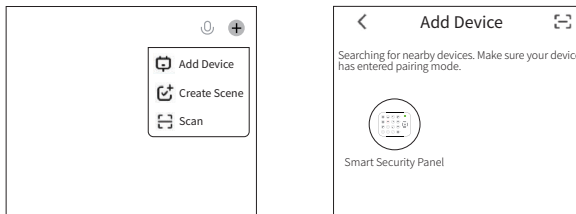
- (1) iOS users, please scan the Apple APP QR code.
- (2) Android users, please scan the QR code of Google Play to download.
- (3) After downloading the APP, please enable all usage permissions for the APP in the phone settings.
- (4) Sign up or Log in to your APP account.

5.2 Connect Panel to Smart Life APP

- This security panel only supports **2.4GHz WiFi** networks only. Make sure your router is set up correctly and can connect to the Internet.
- When adding the security panel to the Smart Life APP, please turn on the mobile phone **WiFi and Bluetooth**, and confirm that the mobile phone is connected to the 2.4GHz frequency band.

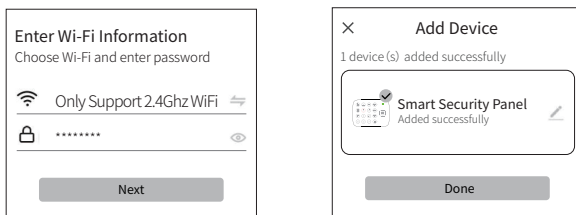
- (1) Power on: turn on the battery switch.
- (2) Open the "Smart Life" APP and enter the "Home" interface.
 - A. Press "+" the on the upper right corner of the interface and select "Add Device".
 - B. Press "Smart Security Panel" on the discovering device' s area.

B. Press “Add” on the discovering device’ s area.



C. Input the 2.4Ghz WiFi name and password, and Press "Next".

D. Paired successfully

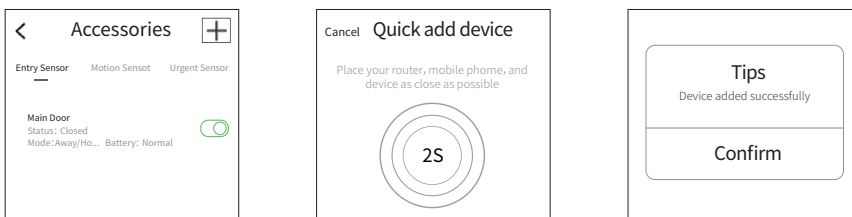


(3) You can remote control the alarm system on the APP.

5.3 Settings on the APP

5.3.1 Add Accessories

Click Accessories, press “+”, and then trigger the accessory to complete the pairing.



Accessories

Entry: Manage all the Entry sensors.

Motion: Manage all the Motion sensors.

Urgent: Emergency detectors such as SOS buttons, gas detectors, and smoke detectors

General: Other sensors or detectors, please add them here.

Controller: Manage all the Remote controls.

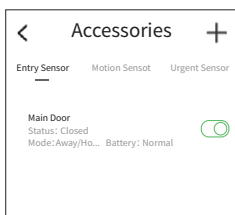
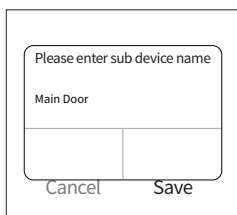
RFID: Manage all the RFID tags.

Note:

- 1) The security system supports the accessories with 433MHz, ev1527.
- 2) For the Entry sensors from another brand, please add it to “General”
- 3) Support up to 52 Sensors, 6 Controllers, 6 RFID Tags.
- 4) Keypad: Please pair it to “Controller”.

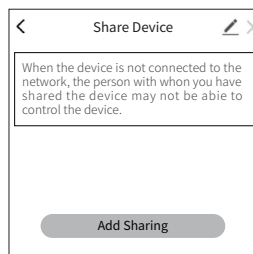
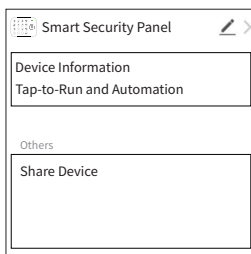
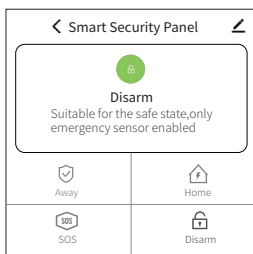
5.3.2 Rename Device

Accessory names can only be renamed on the APP, just press “Sub device name” to edit the name.



5.3.3 Share Device

A security panel can only be paired with one APP account, but you can share it with multiple family members to manage together.



5.3.4 Setting

- **Arm delay:** Customize the countdown time when Arming.
- **Timer:** Create a schedule for the system to run automatically.
- **Local Alarm:** Turn ON/OFF the security panel alarm sound.
- **Siren Alarm:** Turn ON/OFF the external siren sound.
- **Siren Beep:** Choose whether the siren will beep when Arm/Disarm the panel.
- **Delay Beep:** Turn on/off the arming or alarm countdown sound.
- **Entry opened warning:** When the system is armed, if the door/window is open, the APP will pop up a notification.
- **Entry open chime:** When the door sensor is opened, the panel emits a beep.
- **Alarm message push:** APP push alert notification
- **Alarm delay:** Customize the alarm countdown time.
- **Accessory low battery reset:** Clear accessory low battery status when battery is replaced.
- **Factory reset:** Clear all system records
- **Virtual password:** Set PIN code for Google assistant voice control.

5.3.5 Alarm Modes

1.Security Panel Alarm Modes

Away: The security panel is in a monitoring state, when the accessories are triggered, the security panel will alarm.

Home: When the user is at home, in this mode, some areas can be monitored and alarms.

Disarm: The security panel cancels the monitoring state, and only the SOS button or the accessories set to "Always" mode can trigger the alarm.

2.Accessories Modes

Away/Home: When the security panel is in the "Away" or "Home" state, the panel will alarm after the sensor is triggered. It is recommended that the outdoor sensor can be set to this mode.

Away: When the security panel is in the "Away" state, the panel will alarm after the sensor is triggered. It is recommended that the outdoor detector can be set to this mode.

Always: Regardless of the state of the security panel, any time the sensor is triggered, the panel will alarm. It is recommended to set this mode for gas leaks or smoke detectors, etc.

Disabled: The security panel will not respond to the alarm request of the sensor set in this mode.




Note:

You can choose which sensors are armed in Home and Away mode, or both, or always active.

For example, if you want to avoid triggering the alarm when you are at home, you can set the specific sensor in Away mode. Then when you set the panel in "Home" state, the alarm will not be triggered, only in "Away" state, the alarm will be triggered.

5.4 Settings on the Panel

5.4.1 Control Alarm System

Away Arm	Press Away 	Note: Away/Home cannot be switched, you need to disarm and then switch the arming mode.
Home Arm	Press Home 	
Disarm	Press Disarm 	Enter Admin/User Code or Touch RFID Tag






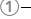



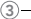









Notice:

Two short beeps: Error/Failure


One long beep: Correct/Successful

5.4.2 Main Settings


(1) Accessory pairing

Press Setting Button 	Enter Admin Code	Quick Pairing	 → 	Automatically identify and pair Door Sensor, Motion Sensor, Remote control, RFID Tag	
		Accessory pairing	 → 	 → 	Entry
				 → 	Motion
				 → 	Urgent
				 → 	Secret
				 → 	General
				 → 	Remote
				 → 	RFID


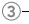




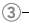

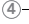



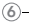

(2) Delete Accessory

Press Setting Button 	Enter Admin Code	②→✔	⑩→✔	Delete All
			①→✔	Entry
			②→✔	Motion
			③→✔	Urgent
			④→✔	Secret
			⑤→✔	General
			⑥→✔	Remote
			⑦→✔	RFID


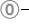

(3) Set Admin/User Code

Press Setting Button 	Enter Admin Code	③→✔	Set Admin Code	⑩→✔	· Enter the New 4-8 -digit code →✔ · Re-enter the New code →✔
			Set User 1 Code	①→✔	
			Set User 2 Code	②→✔	
			Set User 3 Code	③→✔	
			Set User 4 Code	④→✔	
			Set User 5 Code	⑤→✔	
			Set User 6 Code	⑥→✔	



(4) Delete User Code

Press Setting Button 	Enter Admin Code	 → 	Delete User 2	 → 	Press →  twice to delete the user Notice: Admin/User 1 are default and cannot be deleted.
			Delete User 3	 → 	
			Delete User 4	 → 	
			Delete User 5	 → 	
			Delete User 6	 → 	

(5) Reset WiFi Connection.

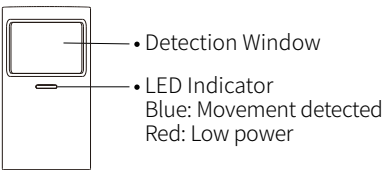
Press Setting Button 	Enter Admin Code	 → 	The WiFi connection will be reset, please reconnect to WiFi.
--	------------------	---	--

(6) Reset Security Panel

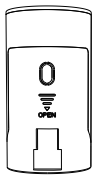
- Remove the power supply, and turn off the battery switch.
- Press and hold  , then turn on the battery switch. After holding for 10 seconds, the security panel will emit a long beep, indicating a successful reset.

IV. Set up the Alarm Devices

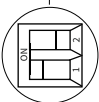
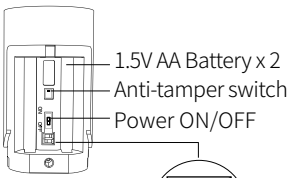
5.1 Motion Detector



Front View

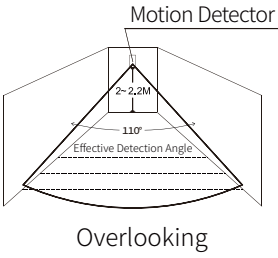


Back View



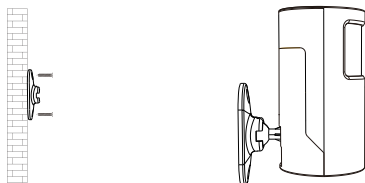
- ② Trigger time: 5s/5 min
- ① LED light switch

How to Install



Mounting Height

Motion detector must be mounted 79 to 87 inches (**2 to 2.2m**) above the floor.



As shown above, install the bracket on the wall with screws. Then put the motion detector into the holder. Adjusts the angle of the motion detector detection range.

5.2 Entry Sensor

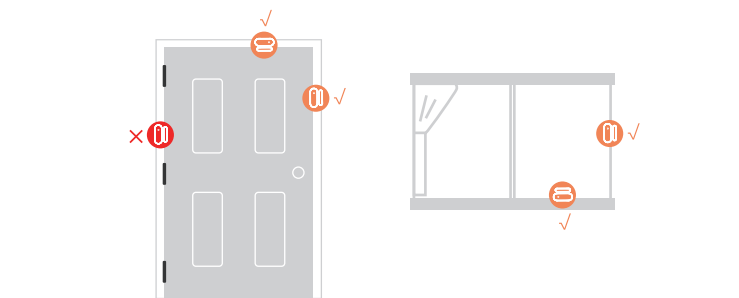
(1) Installation

The entry sensor should be installed on the door or window (see image).

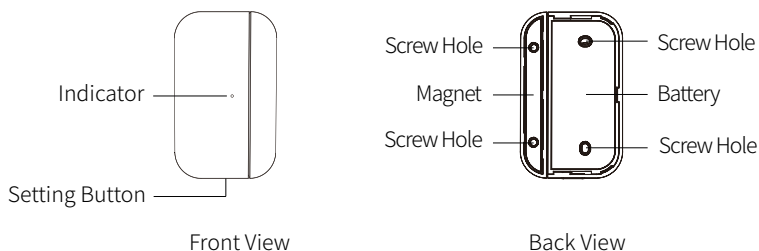
A. First, clean the area on the door or window and apply double-sided tape to the bottom.

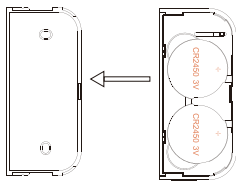
B. The door sensor transmitter (large) and the door sensor magnet (small) should be installed separately, and the distance between the two is less than 0.6".

C. When the door or window is opened after installation, the indicator light will be on for 2 seconds to indicate that the installation is complete.

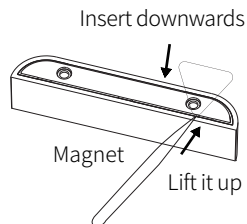


(2) Appearance Design



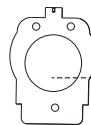
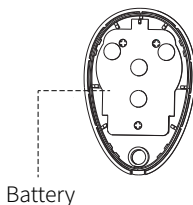
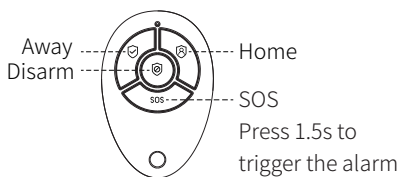


Slide in the direction of the arrow to
remove the back cover



5.3 Controller

(1) Appearance Introduction



Replace the battery
Battery specifications:
3V CR2032

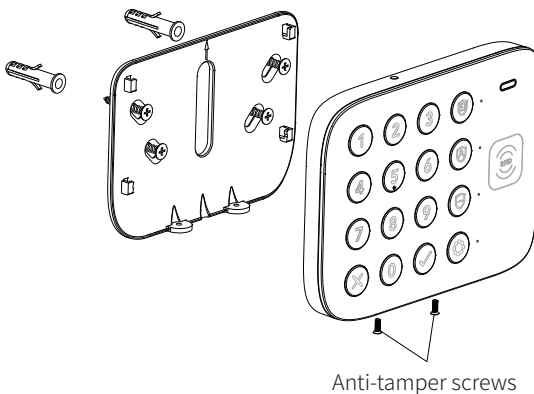
5.4 RFID Tag

RFID protocol : 125KHz, 4100/4200

RFID Tag: Up to 10 cards can be added

5.5 Installation

1. Fix the hanging plate to the wall with screws
2. Install the security panel on the hanging plate
3. Install the anti-tamper screws at the bottom



5.5 Specification

- Power supply: DC5V 1A
- Built-in battery: 3.7V/1500mAh lithium battery
- Standby current: <100mAh
- Wireless parameters: 433MHZ eV1527
- Receiving distance: 100 meters (open space)
- Working temperature: -10°C~50°C
- Relative humidity: <95% (no condensation)



FCC Information and Copyright

This equipment has been tested and found to comply with the limits for a Class B digital device, pursuant to part 15 of the FCC Rules.

These limits are designed to provide reasonable protection against harmful interference in a residential installation. This equipment generates,

uses and can radiate radio frequency energy and, if not installed and used in accordance with the instructions, may cause harmful interference

to radio communications. However, there is no guarantee that interference will not occur in a particular installation. If this equipment does

cause harmful interference to radio or television reception, which can be determined by turning the equipment off and on, the user is

encouraged to try to correct the interference by one or more of the following measures:

- Reorient or relocate the receiving antenna.
- Increase the separation between the equipment and receiver.
- Connect the equipment into an outlet on a circuit different from that to which the receiver is connected.
- Consult the dealer or an experienced radio/TV technician for help.

This device complies with part 15 of the FCC Rules. Operation is subject to the following two conditions:

- (1) This device may not cause harmful interference, and
- (2) this device must accept any interference received, including interference that may cause undesired operation.

changes or modifications not expressly approved by the party responsible for compliance could void the user's authority to operate the equipment.

This equipment complies with FCC radiation exposure limits set forth for an uncontrolled environment. This equipment should be installed and operated with minimum distance 20cm between the radiator & your body. This transmitter must not be co-located or operating in conjunction with any other antenna or transmitter.