

User manual

Remote control

M/N:RF007B

1. Appearance



2. Power supply specification

Use AAA1.5V * 2 alkaline battery to load the remote.

3. Normal function of remote control

The remote control interface includes 7 keys and 1 indicator lamp, operating and indicated as follows:

After pairing: press the key and the indicator light turns on; turn off after release;

After unpairing or clearing the pairing: press the key and the indicator light flashes for 5 seconds.

4. Pair

Pairing: the receiving terminal turns on, press any key to enter the pairing mode, the led lamp turns off for 2 seconds; if the code is not successful, the led lamp flashes off for 5 seconds and exits the pairing mode.

Clear the pairing: remote control press and hold up1 and down2 keys for 10 seconds. Clear successful led flash three times.

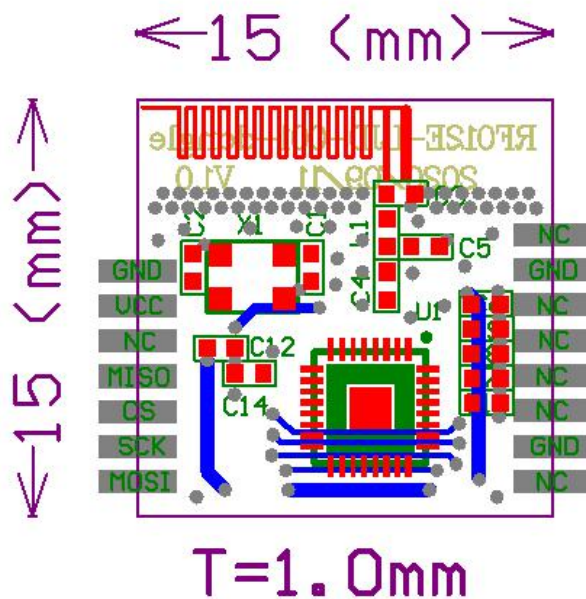
5. Dormancy mode and wake-up

Normal mode: key release remote into sleep mode.

Note: when the remote controller is in hibernation mode, it can be woken up by pressing any key.

6. Receiving module

The receiving module shall be welded to the receiving equipment, and the interface includes: VCC,GND,MISO,CS,SCK,MOSI.Key function corresponding to the remote control.



7. Packaging

Remote control	1 pcs
Receiving module	1 pcs
User manual	1 pcs



FCC Statement

This device complies with Part 15 of the FCC rules. Operation is subject to the following two conditions: 1) this device may not cause harmful interference, and 2) this device must accept any interference received, including interference that may cause undesired operation.

Note: This equipment has been tested and found to comply with the limits for a Class B digital device, pursuant to part 15 of the FCC Rules. These limits are designed to provide reasonable protection against harmful interference in a residential installation.

This equipment generates, uses and can radiate radio frequency energy and, if not installed and used in accordance with the instructions, may cause harmful interference to radio communications. However, there is no guarantee that interference will not occur in particular installation. If this equipment does cause harmful interference to radio or television reception, which can be determined by turning the equipment off and on, the user is encouraged to try to correct the interference by one or more of the following measures:

- Reorient or relocate the receiving antenna.
- Increase the separation between the equipment and receiver.
- Connect the equipment into an outlet on a circuit different from that to which the receiver is connected.
- Consult the dealer or an experienced radio/TV technician for help.

Changes or modifications not expressly approved by the party responsible for compliance could void the user's authority to operate the equipment.

FCC RF Radiation Exposure Statement

The device has been evaluated to meet general RF exposure requirement. The device can be used in portable exposure condition without restriction.