

1. Antenna dimensions are shown in Figure 1

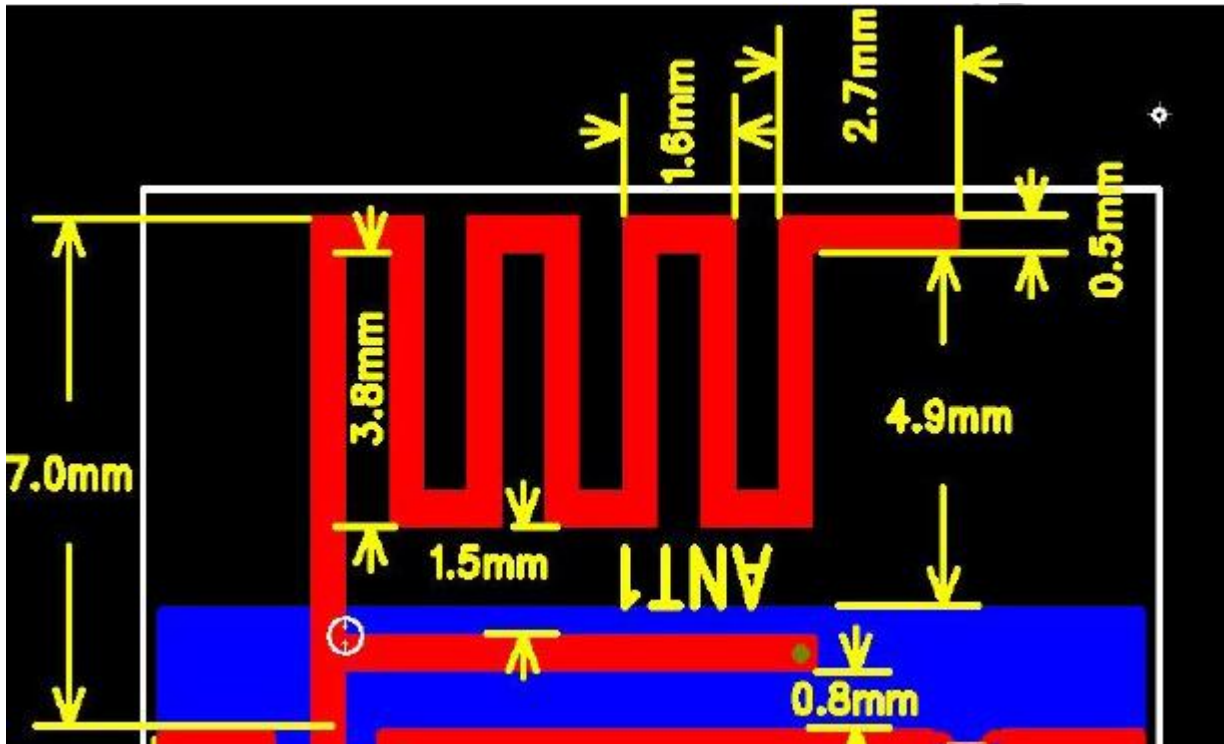


Figure 1

2. The antenna performance is shown in Figure 2, and the operating band covers the entire 2.4G ISM band.

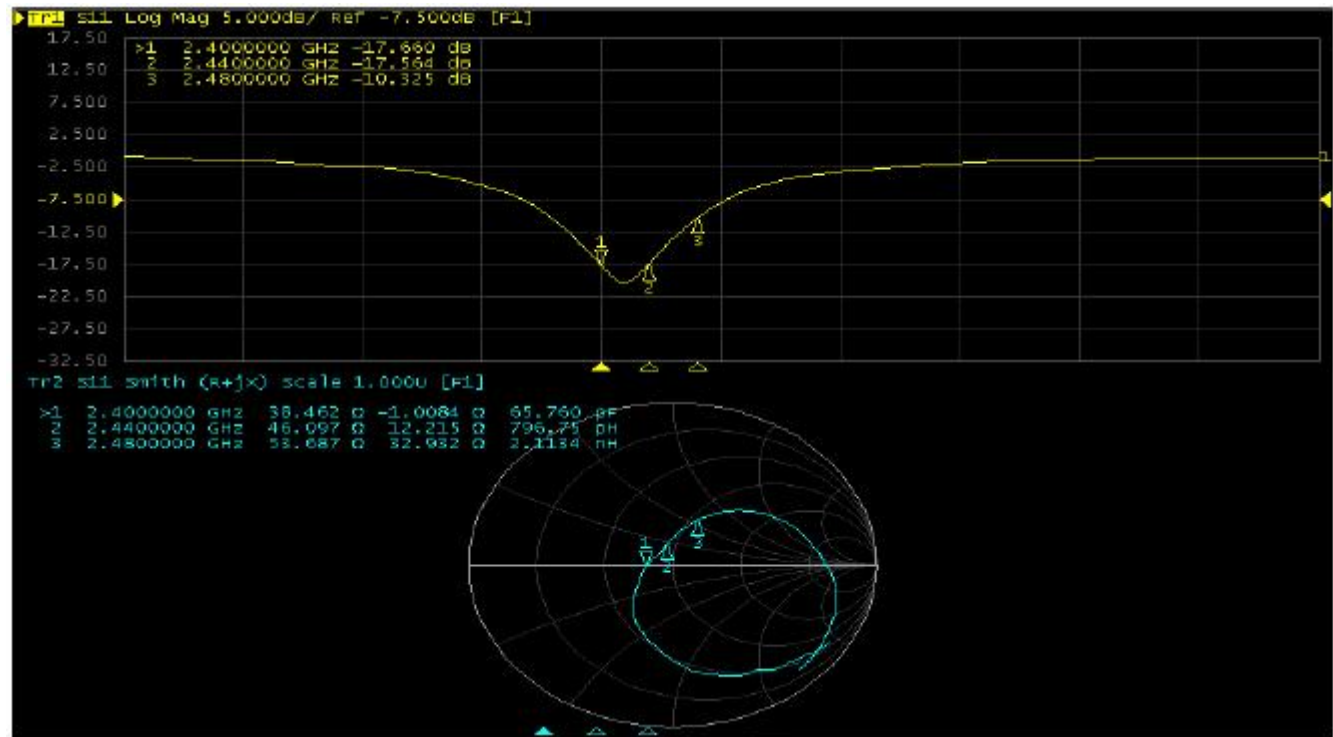


Figure II Normal Module Wiggle antenna

The 2D and 3D gains are as follows, and the maximum gain of the antenna is about 6dB larger than that of Nano, reaching about 1.5dBi:

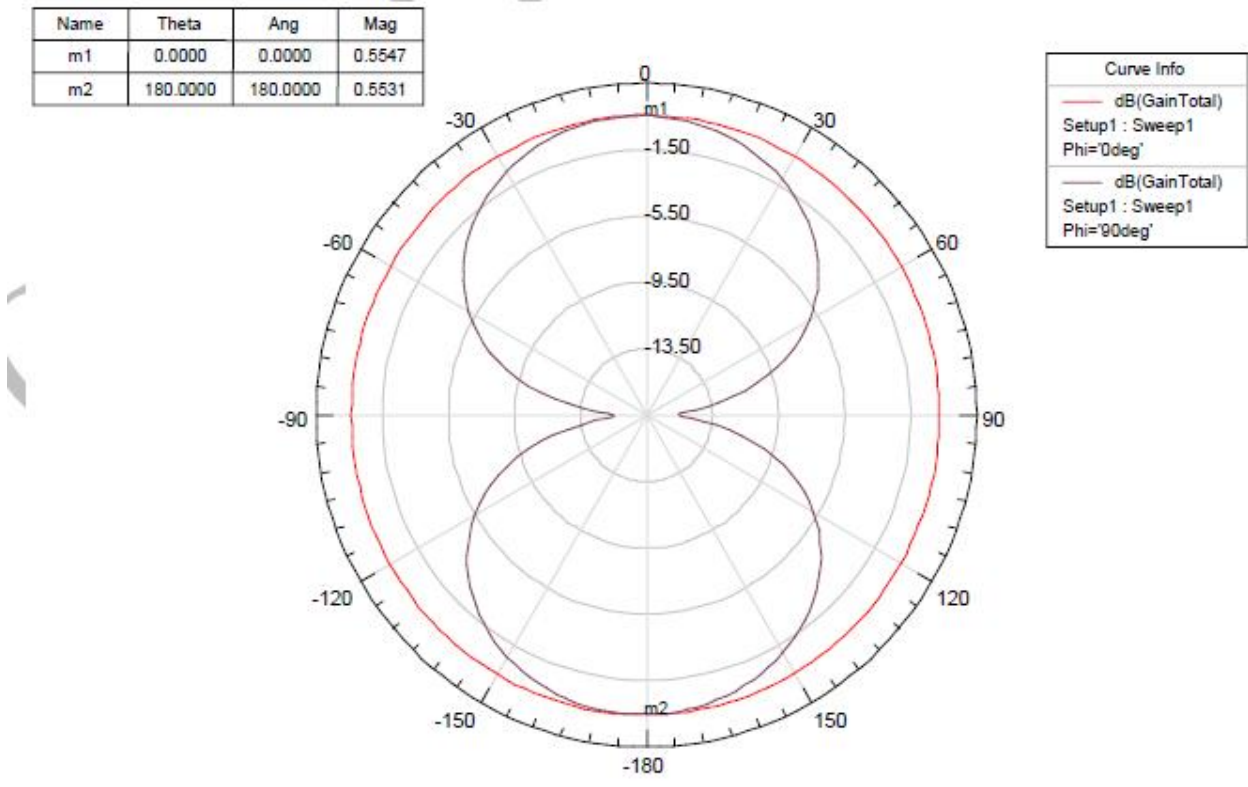


Figure
III

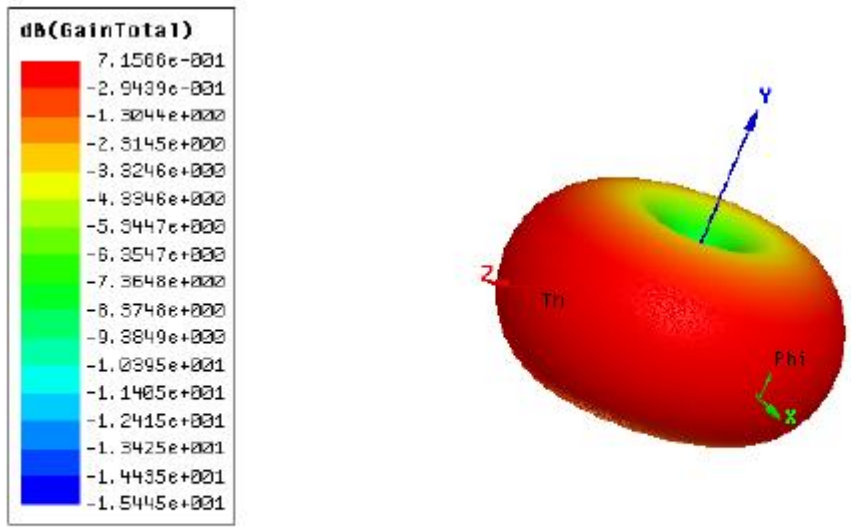


Figure IV Normal Module Wiggle Antenna gain
3.manufacturer: Dongguan Dongyu Electronics Co., Ltd