

Brookstone®

Smart LED Strip

WHITE & **COLOR** CHANGING

USER MANUAL



FCC Statement:

1. This device complies with Part 15 of the FCC Rules. Operation is subject to the following two conditions: (1) this device may not cause harmful interference, and (2) this device must accept any interference received, including interference that may cause undesired operation.

Caution: The user is cautioned that changes or modifications not expressly approved by the party responsible for compliance could void the user's authority to operate the equipment.

Note: This equipment has been tested and found to comply with the limits for a Class B digital device, pursuant to part 15 of the FCC Rules. These limits are designed to provide reasonable protection against harmful interference in a residential installation. This equipment generates uses and can radiate radio frequency energy and, if not installed and used in accordance with the instructions, may cause harmful interference to radio communications. However, there is no guarantee that interference will not occur in a particular installation. If this equipment does cause harmful interference to radio or television reception, which can be determined by turning the equipment off and on, the user is encouraged to try to correct the interference by one or more of the following measures:

- Reorient or relocate the receiving antenna.
- Increase the separation between the equipment and receiver.
- Connect the equipment into an outlet on a circuit different from that to which the receiver is connected.
- Consult the dealer or an experienced radio/TV technician for help.

2. This equipment complies with FCC radiation exposure limits set forth for an uncontrolled environment. This equipment should be installed and operated with a minimum distance of 20cm between the radiator and any part of your body.

For more products please visit www.brookstone.com

SPECIFICATIONS

Model: BKSRGBSTRP

Power Supply: USB

Input Voltage: 5V

Protection Rating: IP24

Color RGB: 220°

LED: 5050

Operating Temperature: -4°F - 122°F

LED Strip Length: 9.84 feet

Wireless type: Wi-Fi 2.4GHz

Wireless Standard: IEEE 802.11b/g/n

WARRANTY INFORMATION

One Year Limited Warranty.

Customer Service: 732-994-2301; email: help@smartpointco.com

The BROOKSTONE trademark, names and logos are owned by

BKST Brand Holdings LLC ©2021. All rights reserved.

Manufactured, marketed and distributed by Smartpoint LLC, under license.

Amazon, Alexa and all related logos are trademarks of Amazon.com, Inc. or its affiliates.

Google, Android, Google Play and Google Home are trademarks of Google LLC.

App Store® is a registered trademark of Apple, Inc.

All trademarks and registered trademarks are property of their respective owners.

Made in China

©Smartpoint LLC,

250 Liberty Street, Suite 1A

Metuchen, NJ 08840

FEATURES

- Wi-Fi remote controlled
- Changes to 16 million different colors
- Dimmable & Programmable with Schedule
- Syncs with music
- Can be cut to size
- 3M Adhesive back
- App and Voice Control
- Works with Hey Google or Amazon Alexa



Items included in package:
Smart LED Strip and User Manual.

DOWNLOAD APP

1. Android™: download “Brookstone Smart” app on Google Play.
2. iPhone: download “Brookstone Smart” app from the App Store.

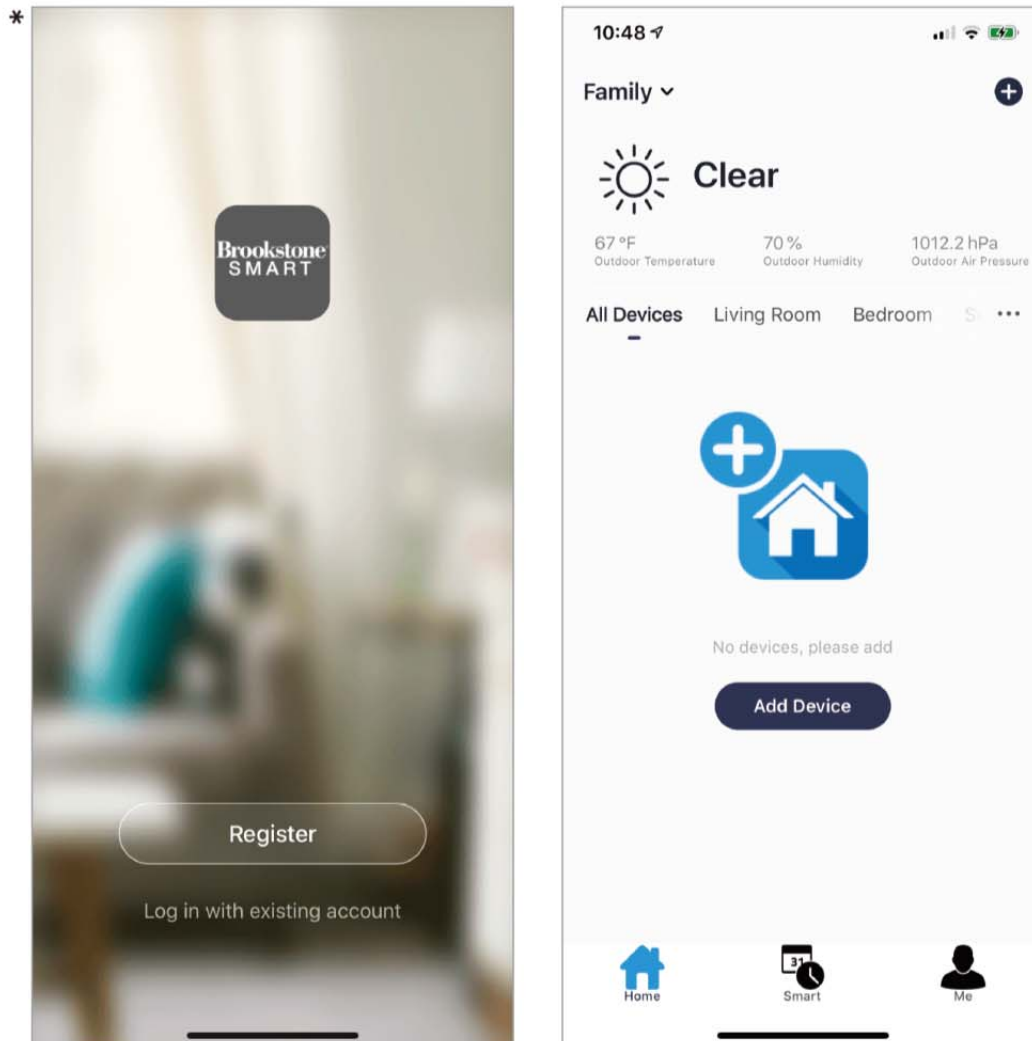


Brookstone Smart



REGISTRATION AND LOGIN

1. Run the “Brookstone Smart” app from your smart phone.
2. Register and login.

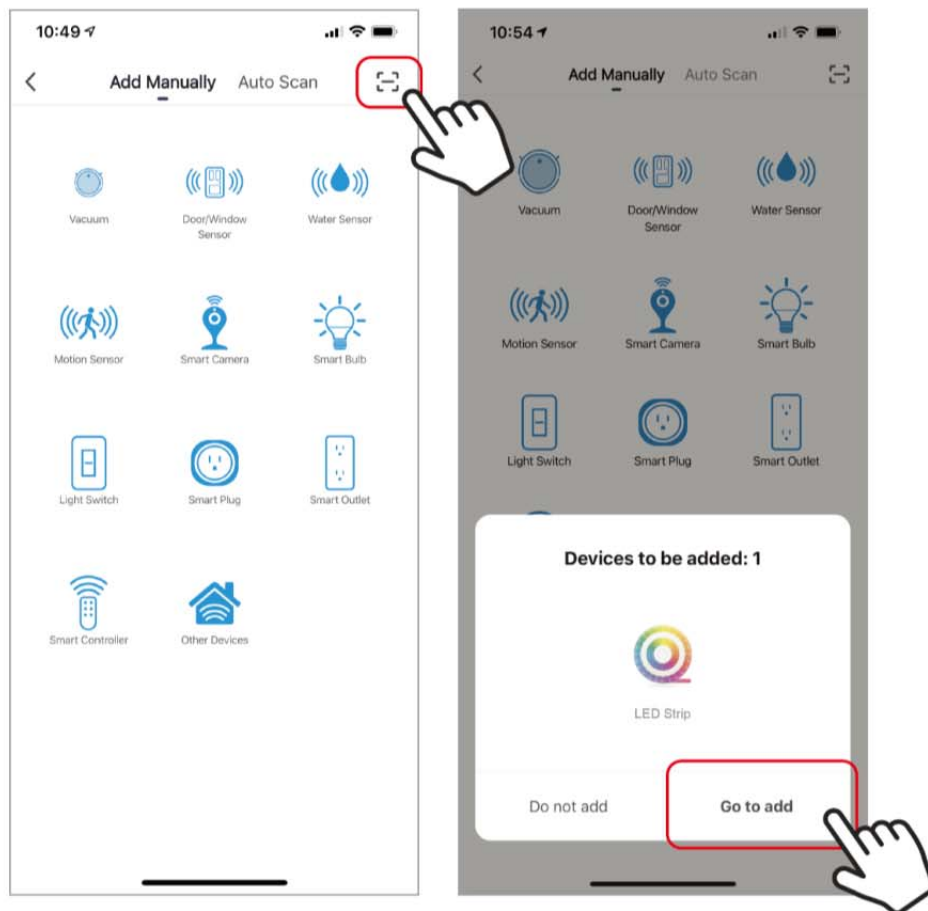


*Screenshots may slightly differ from actual app.

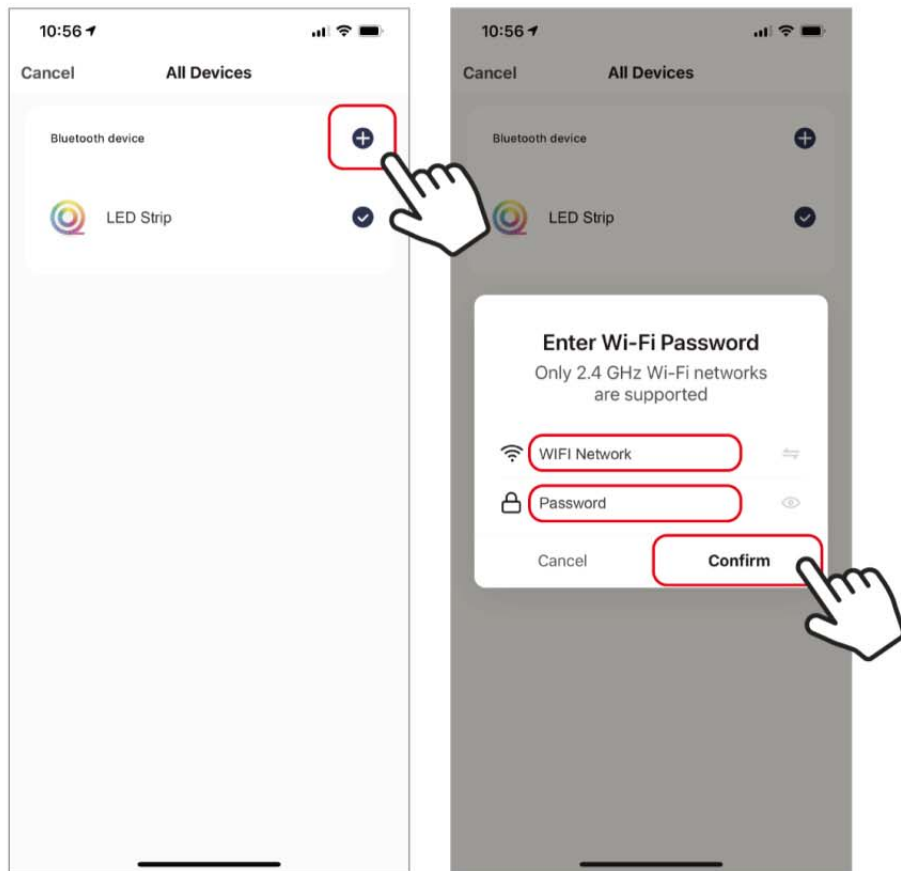
ADD DEVICE

1. Make sure phone is connected to your Wi-Fi network and that it is a 2.4GHz network and Bluetooth is turned on in your phone settings.
2. Plug in the LED Strip into a USB port that has power. If the lights start blinking fast they are in set up mode and you can proceed to step 3. If they are not blinking fast, press and hold the on/off button down for 5-7 seconds and let go. Lights should then start to blink fast and then they are in set up mode.
3. From the home screen of the App, press the (+) symbol in the top right corner.

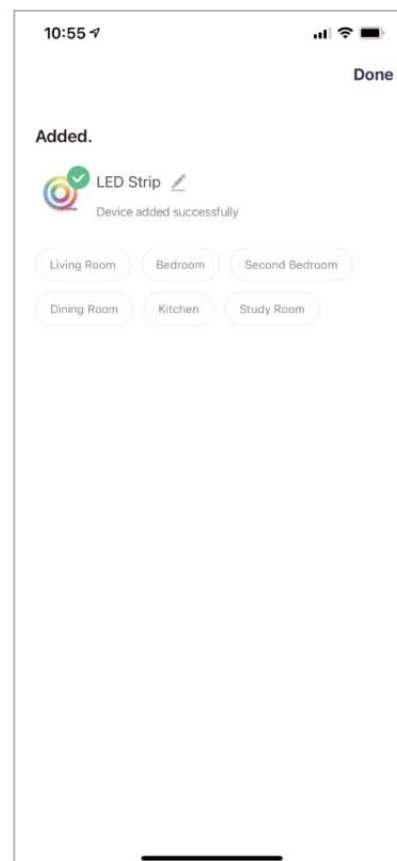
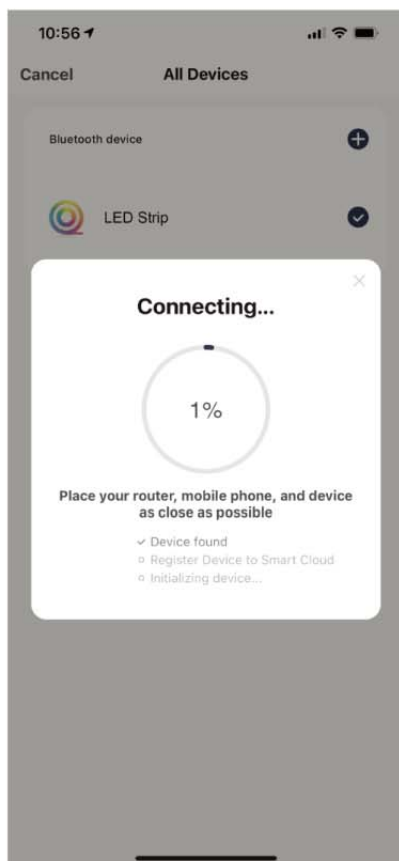
4. A pop up window will automatically appear asking to add the LED Strip. Press “Go to add”. On the next screen, click on the (+) icon.



5. Make sure your phone is connected to the Wi-Fi network that the device will be connected to. Enter your password for the correct Wi-Fi network and press confirm.



6. Connecting process will begin. Do not turn off or unplug LED Strip or phone while connecting. Wait for connection process to complete.
7. Once device has been successfully added, name the device what you would like it to be called in the app. The LED Strip is now ready for use.



CONTROLLING THE DEVICE

There are three modes for the LED Strip.

White & Color Mode, Scene Mode and **Music Mode**. All of these modes can be found at the top of the app screen when the LED Strip is selected.

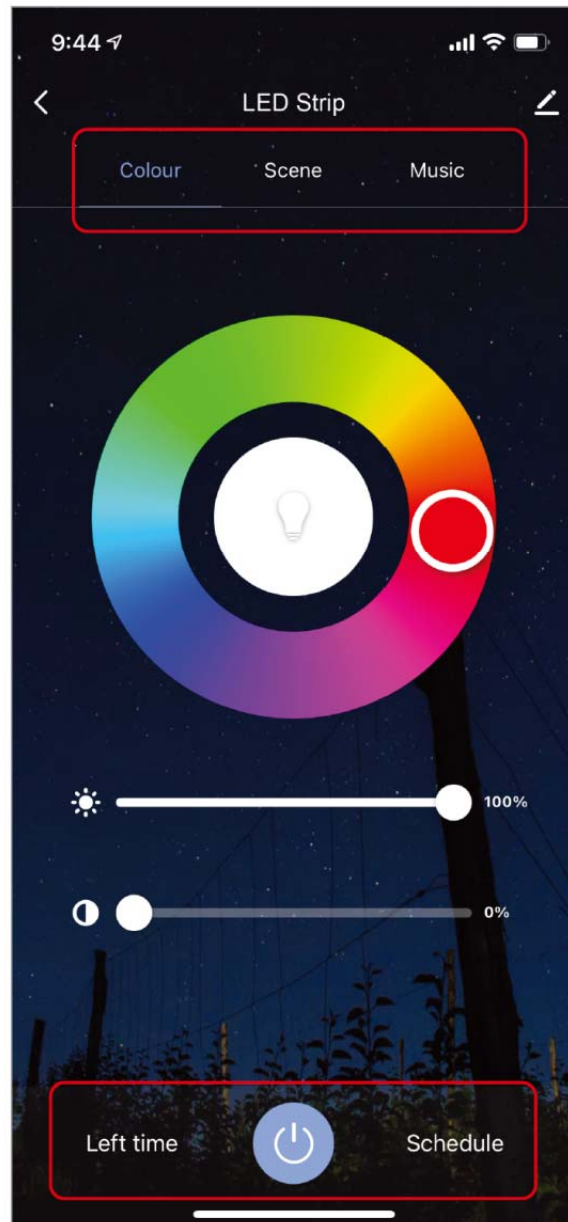
White & Color mode lets you change the color of the LED Strip to white or any color and you can adjust the brightness and color saturation. *(To change the lights to white, choose any color on the color wheel. Then lower the saturation to 0%).*

Music Mode changes the color of the LED Strip when it hears sound and music based on the rhythm.

Scene mode has preprogrammed color settings to pick from. Each scene can be edited by clicking on "Edit" and you can choose which color they use and how the lights change.

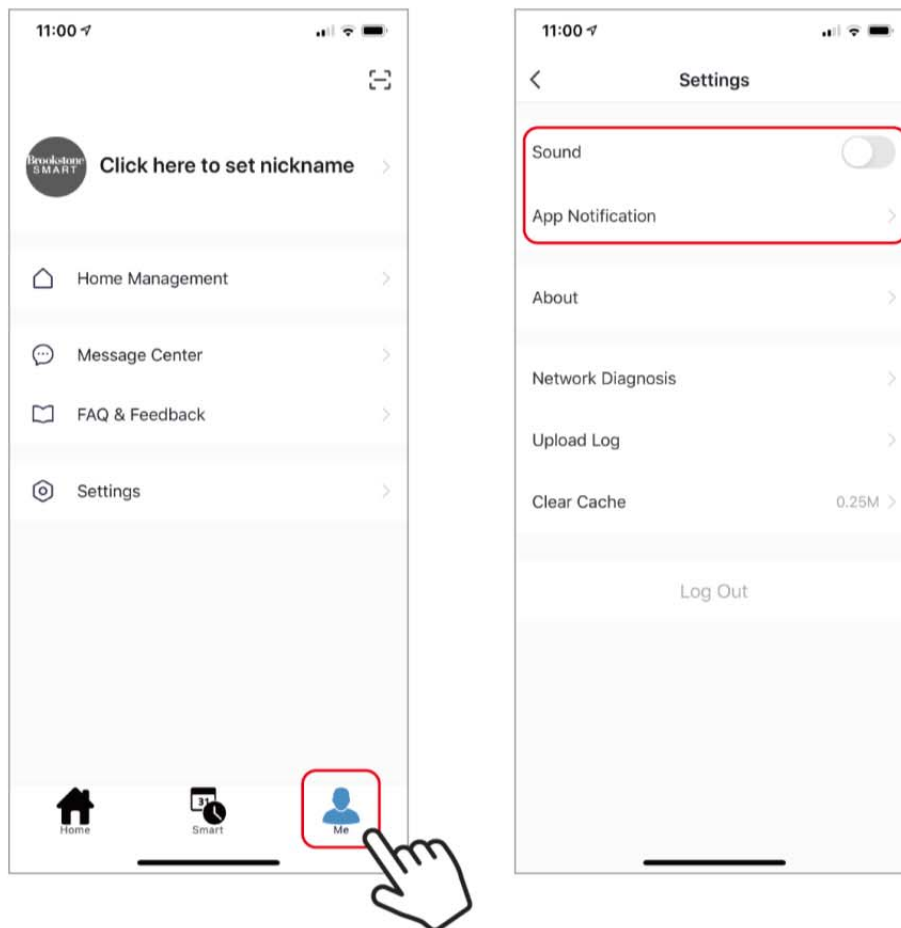
You can also **set a schedule or timer** for your smart LED Strip at the bottom of the app screen.

To turn lights on/off, press the power button on the LED Strip control panel page.
(SEE NEXT PAGE FOR LAYOUT OF CONTROLS)



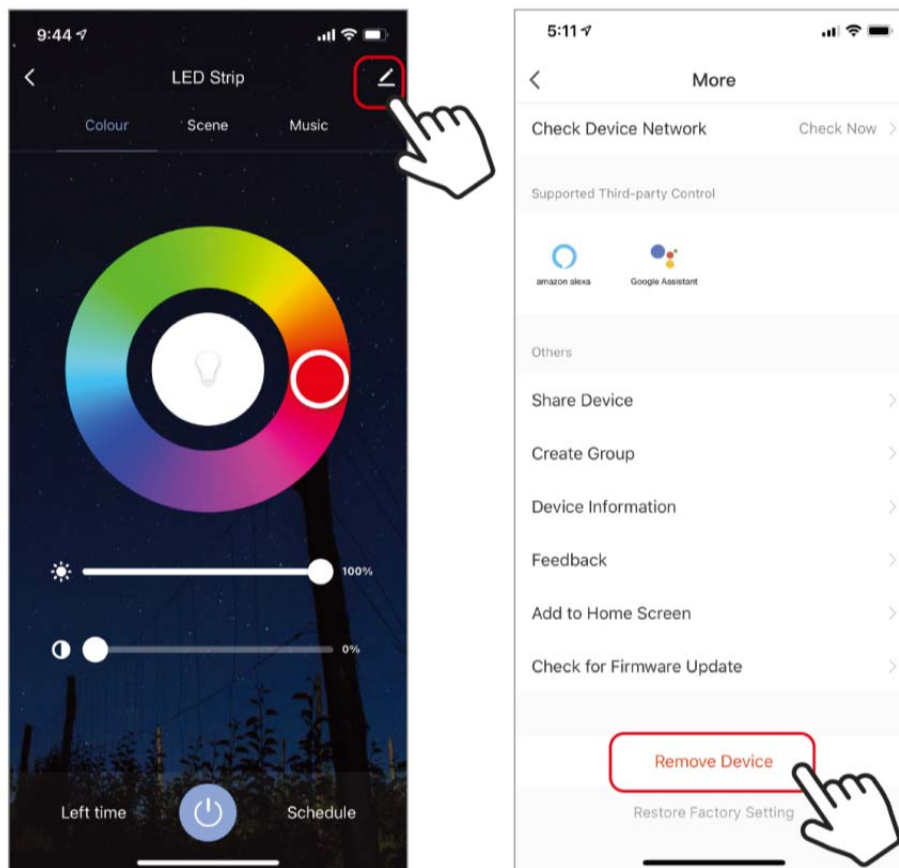
PUSH NOTIFICATIONS

1. You can turn on/off notifications for all devices connected to app by clicking on the “Me” button at the bottom right of the screen.
2. Then click on “Settings” button. From there you can turn on/off all notifications.



HOW TO REMOVE A DEVICE

1. From the home screen, click on the device you would like to remove.
2. Then click on the edit symbol on the top right of the screen.
3. From there you would then click the “Remove Device” button at the bottom of the screen.

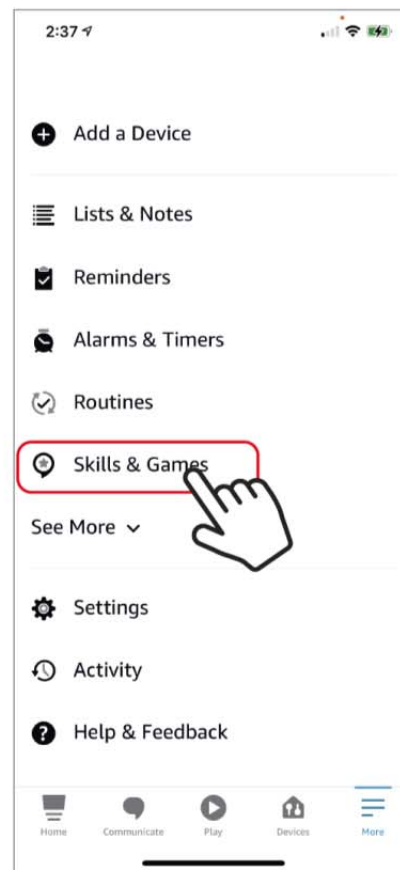
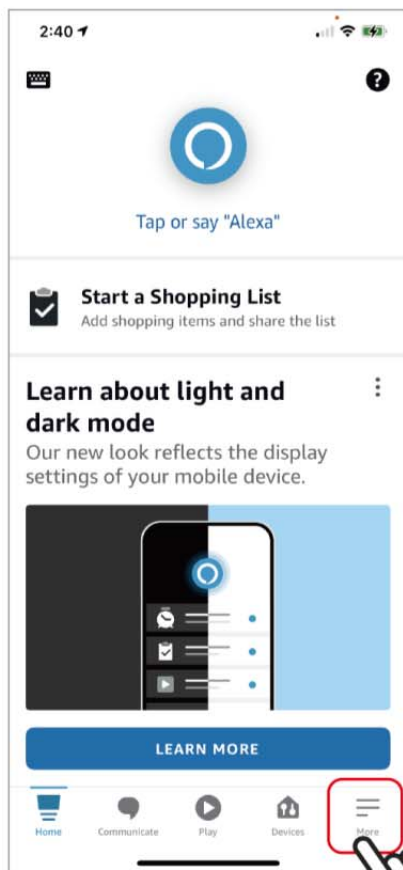


How to control the Smart LED Strip with Amazon Alexa



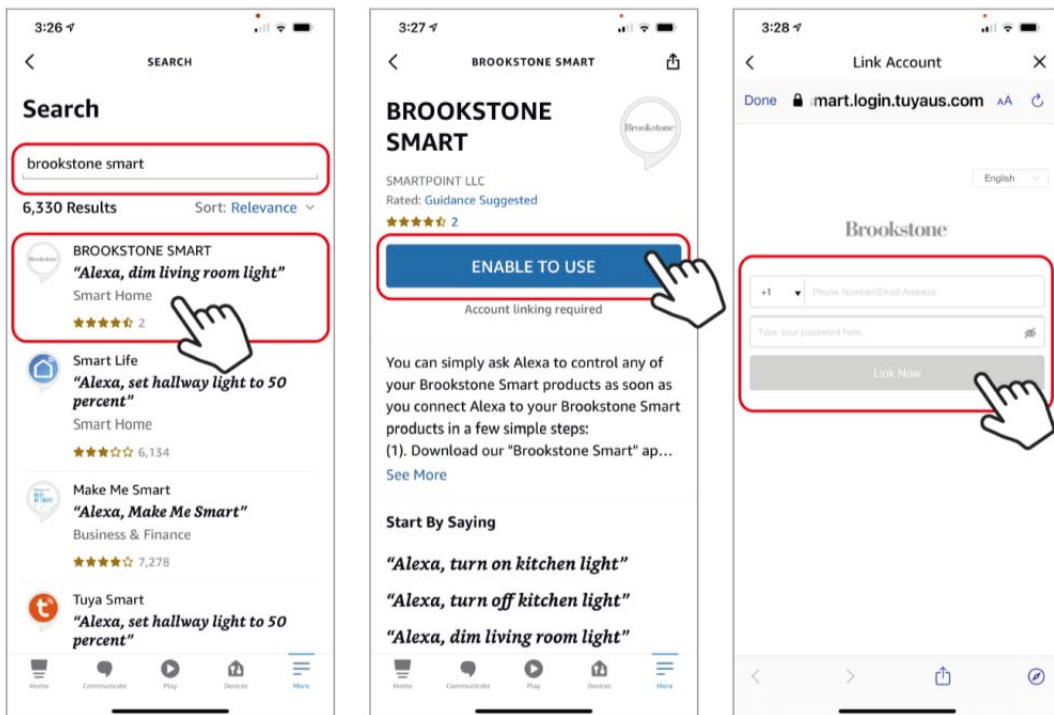
Please make sure that your Alexa app is connected to your Amazon Echo and both work together successfully on your Wi-Fi home network.

Step A. Log into your Alexa app, tap bottom right corner, and then tap “Skills & Games”.

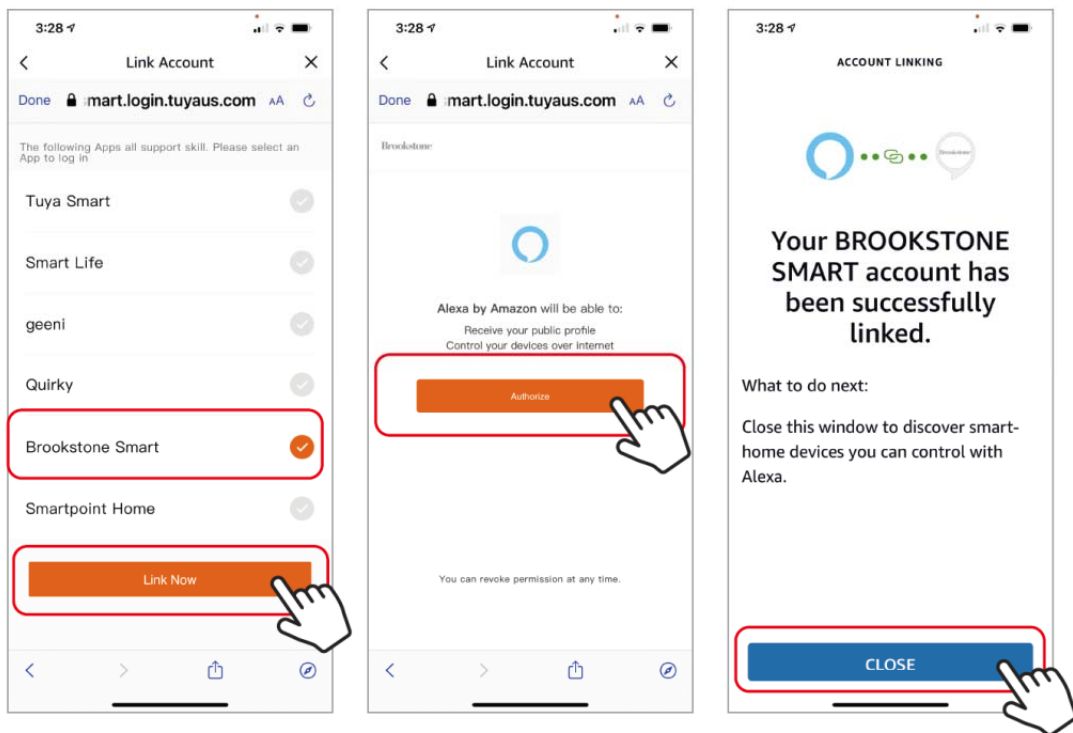


Step B. Type “Brookstone Smart”, find “Brookstone Smart” app in the search results and tap and then tap “enable to use”.

Step C. Enter your account info for the “Brookstone Smart” app, tap “Link Now”, then tap “Brookstone Smart” and tap “Link Now” again. On the next page press “Authorize” to link Brookstone Smart account to Alexa.



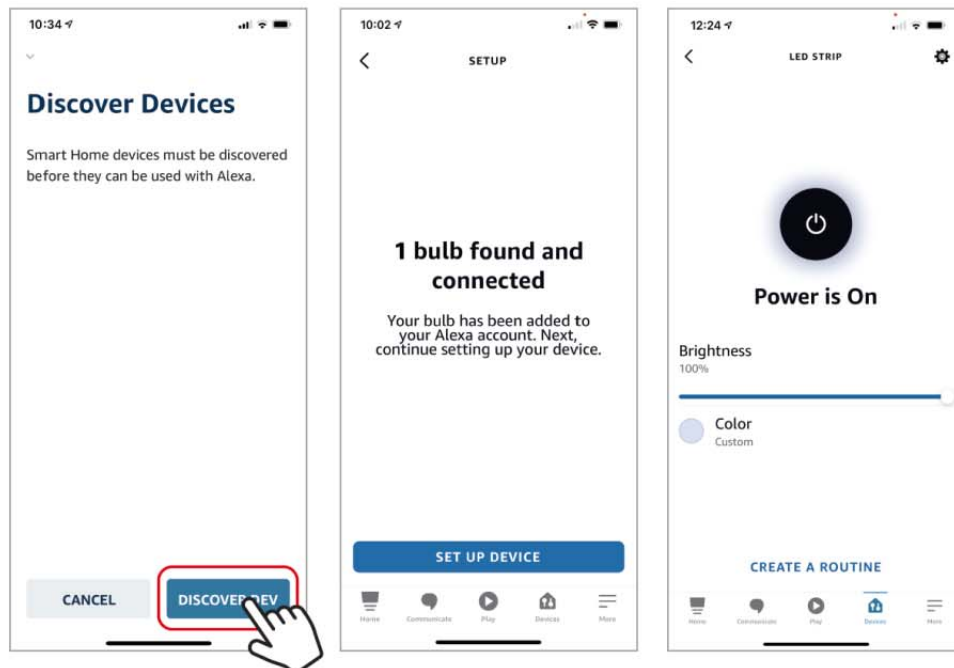
Step D. Once your Brookstone Smart account is successfully linked to Alexa, the next page will pop up. Tap "Close" at the bottom and then tap "Discover Devices" on the next page at the bottom right.



Step E. Wait a few seconds for Alexa to detect the Smart LED Strip from the Brookstone Smart app and you will find the device named "Smart LED Strip" has been paired to Alexa app from "Brookstone Smart" app. Follow the on-screen instructions to further set up the device.

The LED Strip will be named whatever you named it in the Brookstone Smart App.

After **Step E** is done, you can now control the Smart LED Strip with Alexa app from the devices page.



Step F. Now you are able to control the Smart LED Strip via Amazon Alexa with your voice.

Try these commands and see what happens by asking Alexa:

- Alexa, turn on “Smart LED Strip”
- Alexa, turn off “Smart LED Strip”

Note: The device name is the one you give to the smart LED Strip on “Brookstone Smart” app. Let’s name it “Living Room”.

For example, now you can say:

- “Alexa, make the Living Room Blue”,
- “Alexa, make the Living Room Red”, etc.

Any device you connect to the Brookstone Smart App should automatically be added to Alexa. If it does not add automatically, ask Alexa to discover devices.

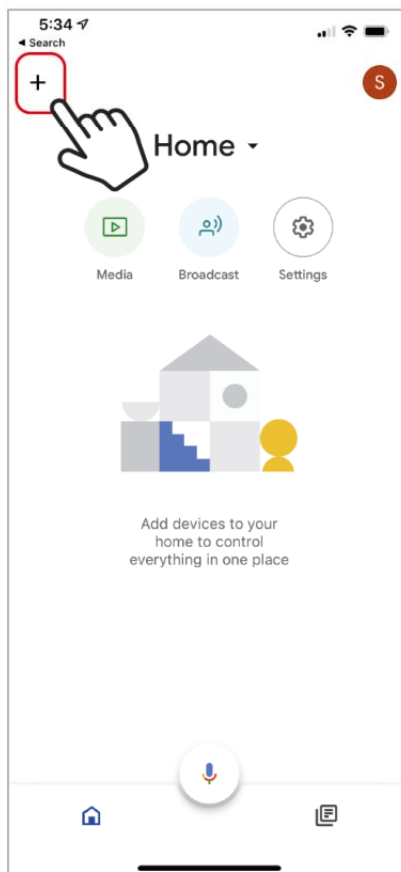
How to control the Smart LED Strip with Google Assistant

1. Pair Smart LED Strip with Brookstone Smart App and name it with an easily recognizable name.

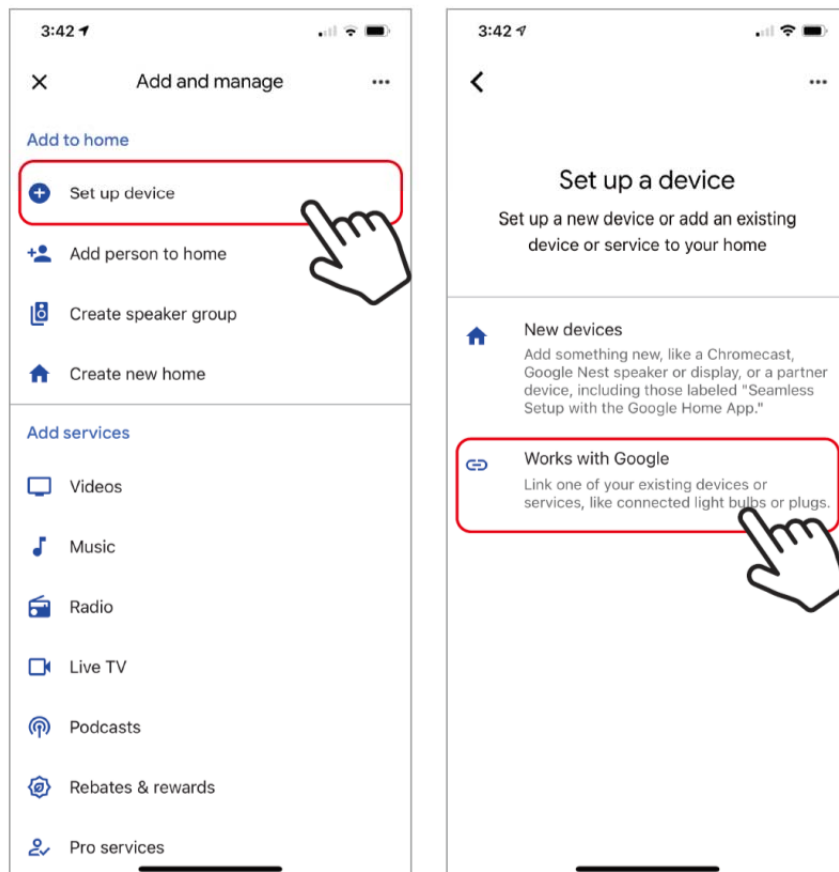


2. Download the Google Home App and register and log in with your Google Account info.

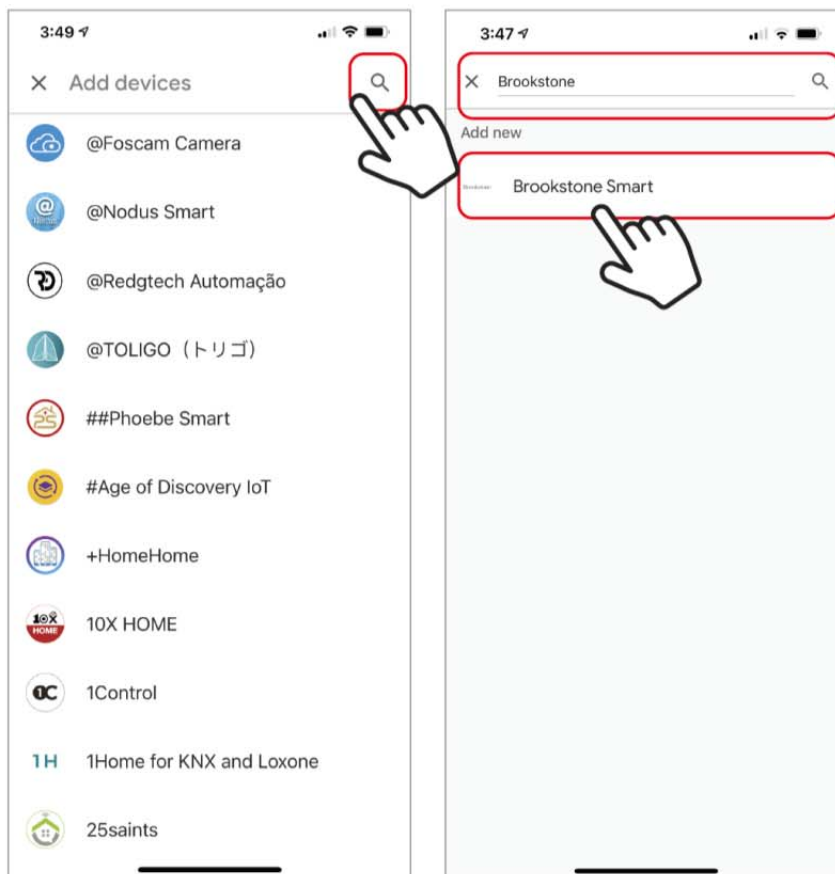
Step A. Once you are logged into your Google Home App, press the (+) icon in the top left hand corner.



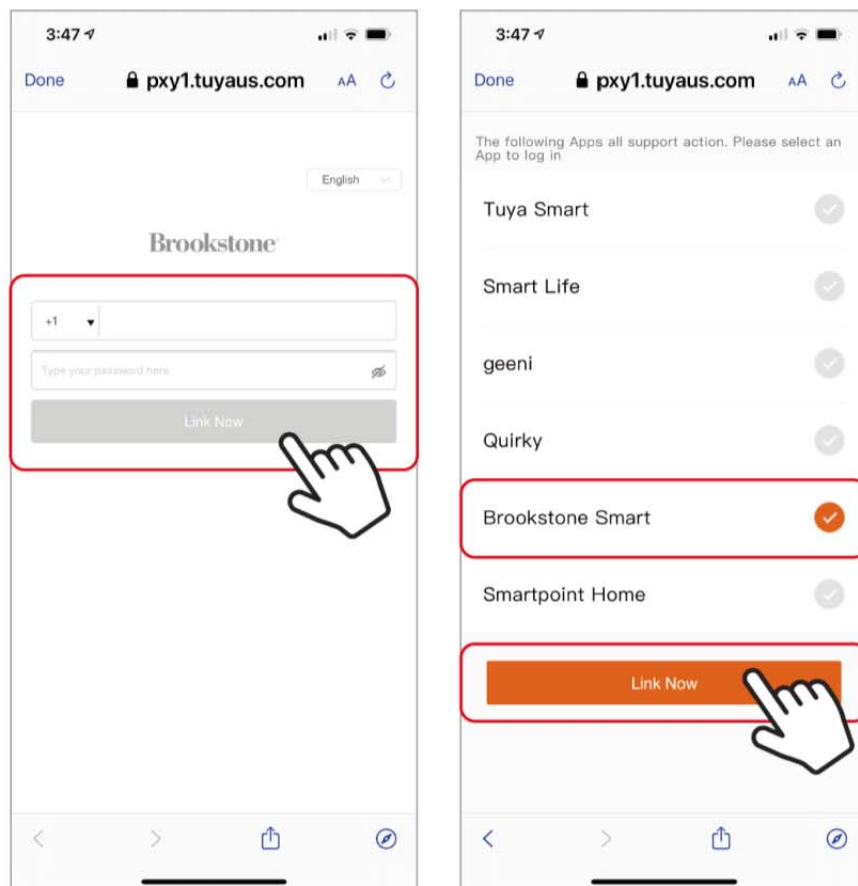
Step B. On the next page press “Set up device”, and then on the page after that select “Works with Google”.



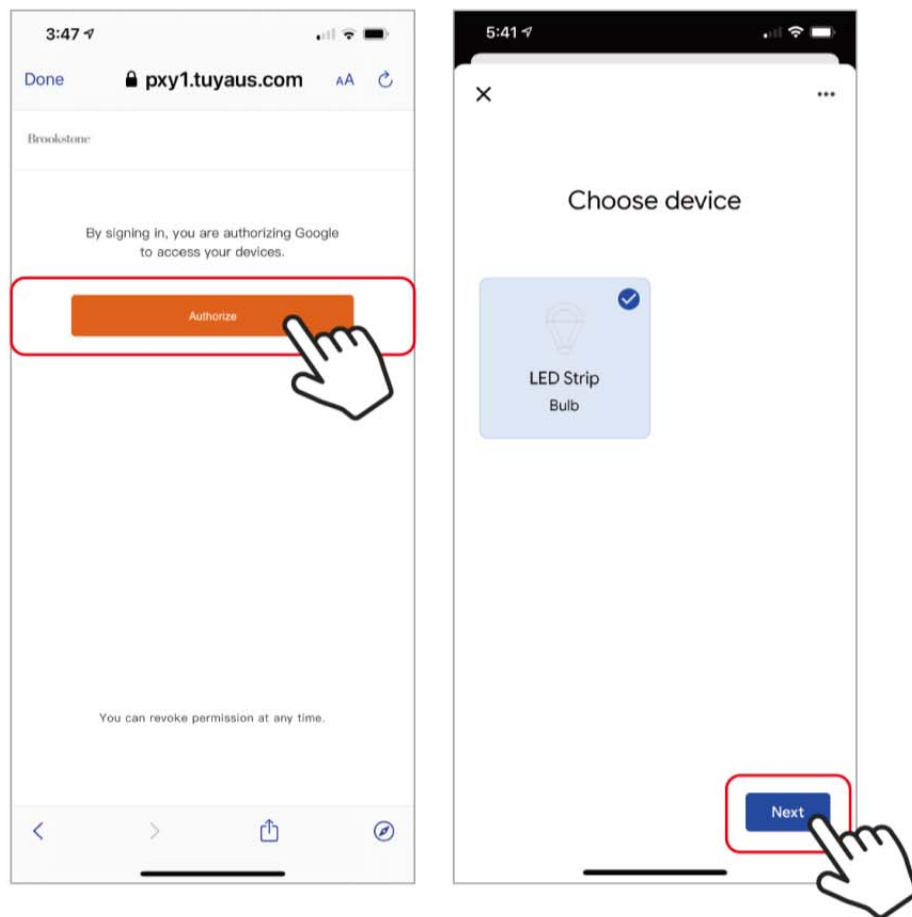
Step C. Press the magnifying glass icon to type in the app you would like to link to your Google Home account. In this case, type in “Brookstone Smart” and then select it from the list below.



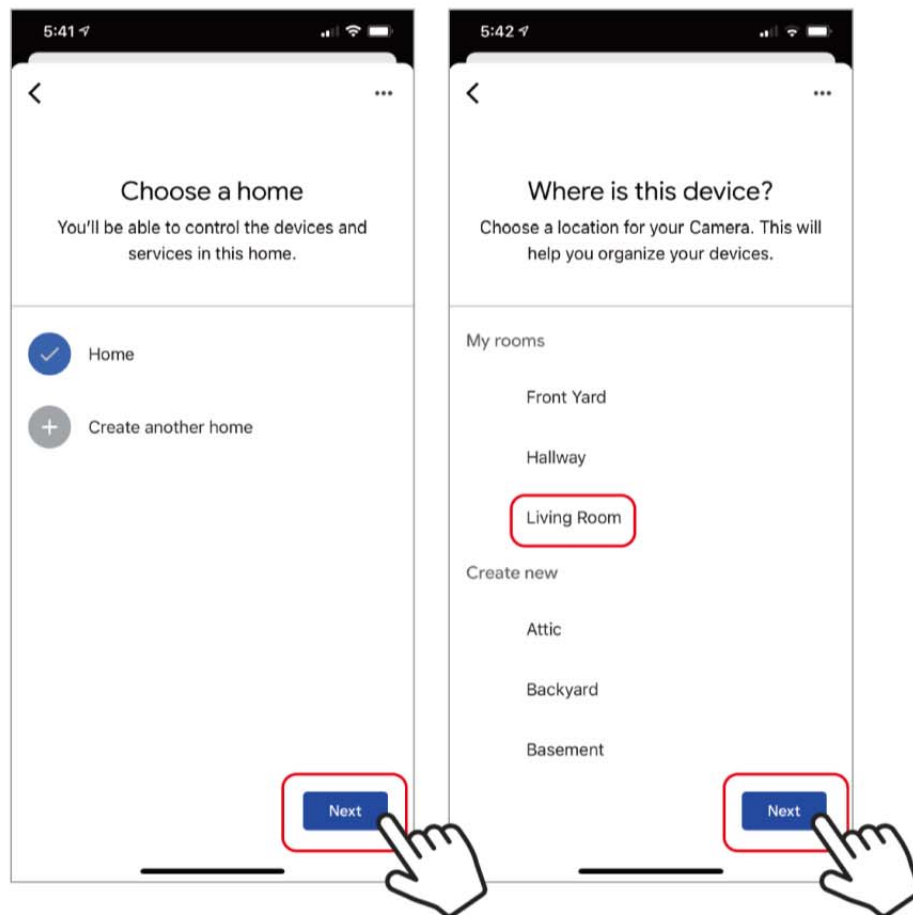
Step D. Enter your account info for the “Brookstone Smart” app, tap “Link Now”. On the next page select the correct app to link and then press “Link Now” again.



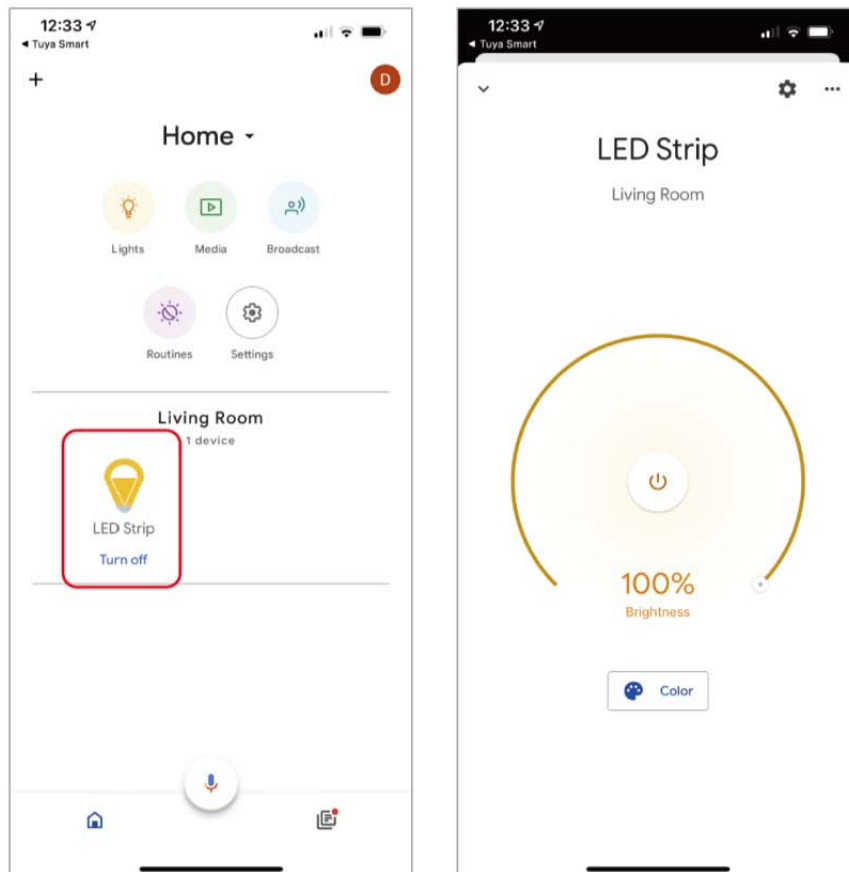
Step E. Tap “Authorize” on the next page to link your Brookstone Smart Account with Google Assistant. After that you will see any devices that are connected to your Brookstone Smart App. Choose the device you would like to add to the Google Home App and press “Next”.



Step F. Select the home you would like the device to be linked to and then select which room you would like the assign it to.



Step G. Your device is now linked to your Google Home App. You can now control it through the Google Home App on your phone or through a Google Assistant-enabled speaker.



Step H. You also are able to control the Smart LED Strip via Google Assistant with your voice.

Just start with “Hey Google”.

“Turn on Smart LED Strip”

“Turn off Smart LED Strip”

Note: The device name is the one you give to the LED Strip on the “Brookstone Smart” App . Let’s name it “Living Room”.

For example:

“Turn on Living Room”

“Turn off Living Room”