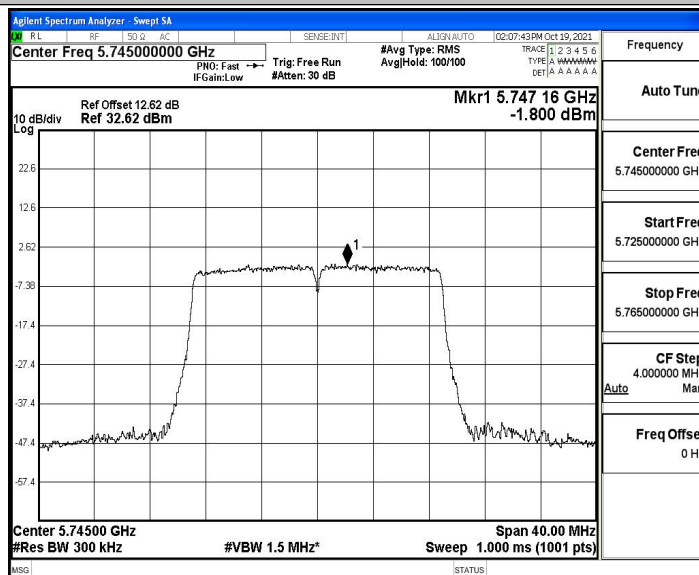
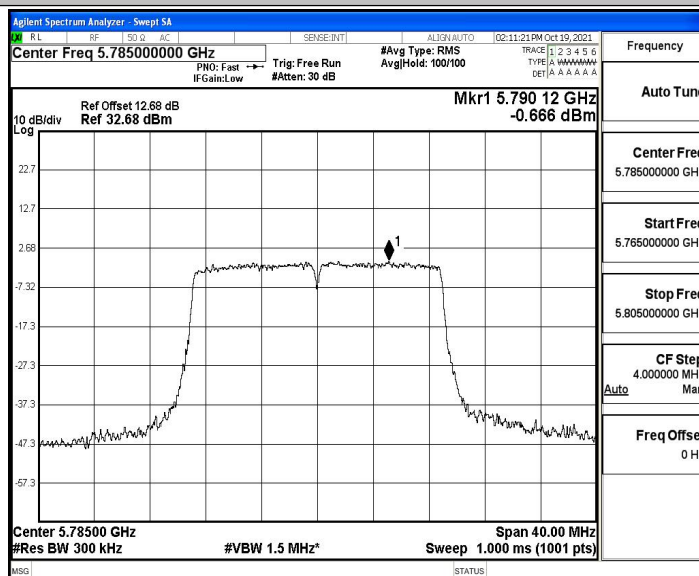


11N20SISO_Ant4_5745

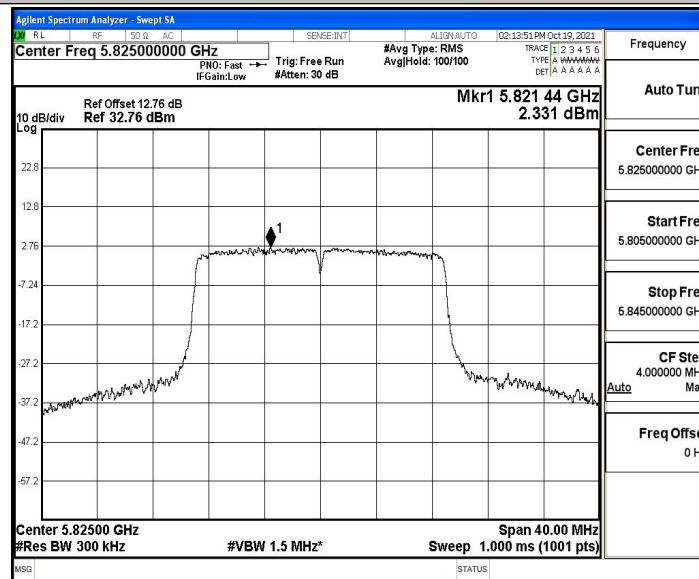


11N20SISO_Ant4_5785

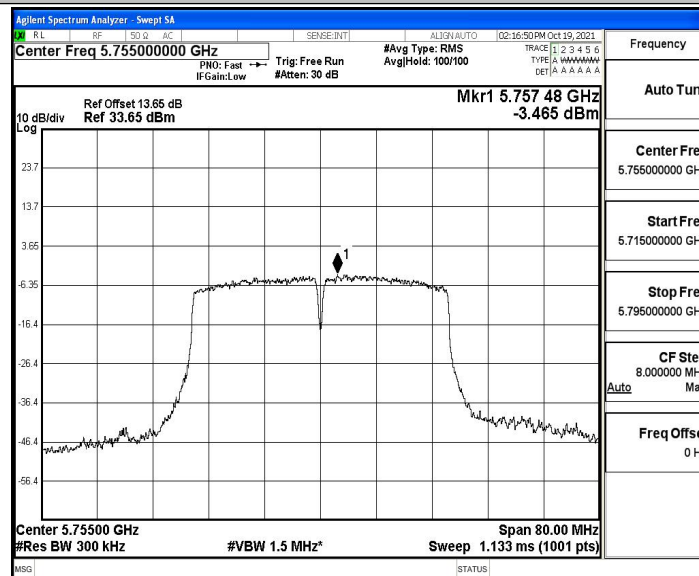




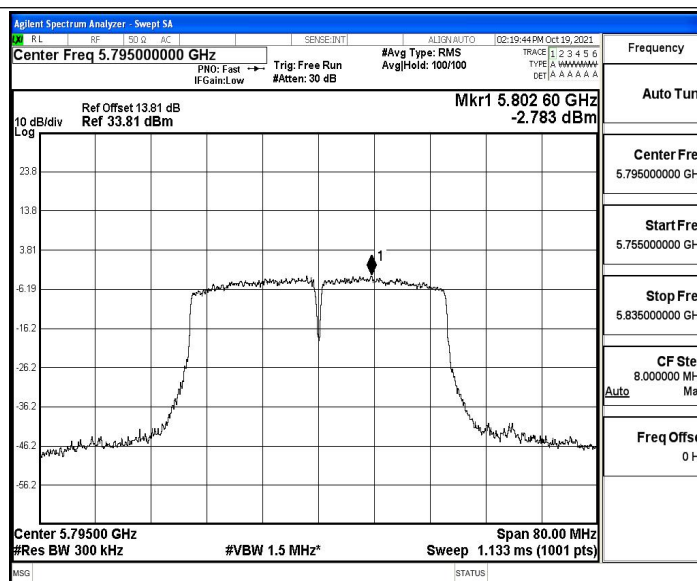
11N20SISO_Ant4_5825



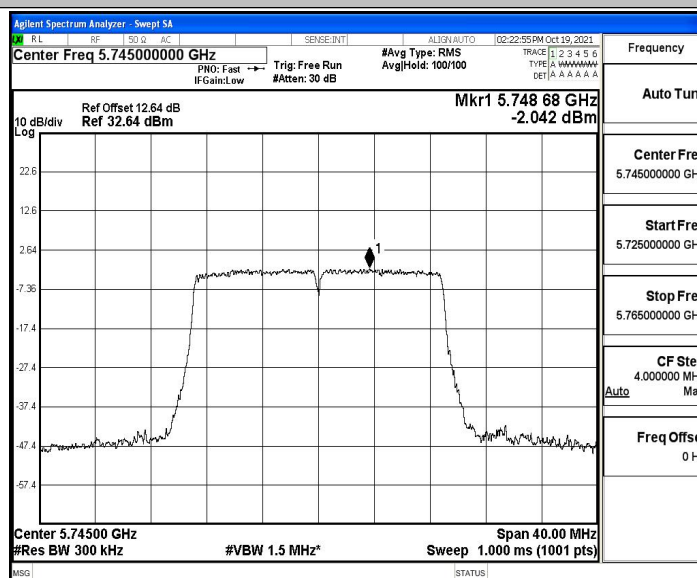
11N40SISO_Ant4_5755



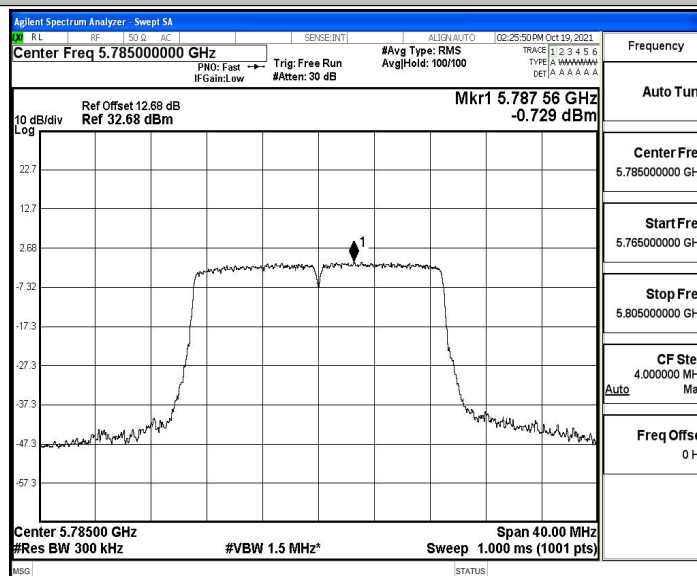
11N40SISO_Ant4_5795



11AC20SISO_Ant4_5745

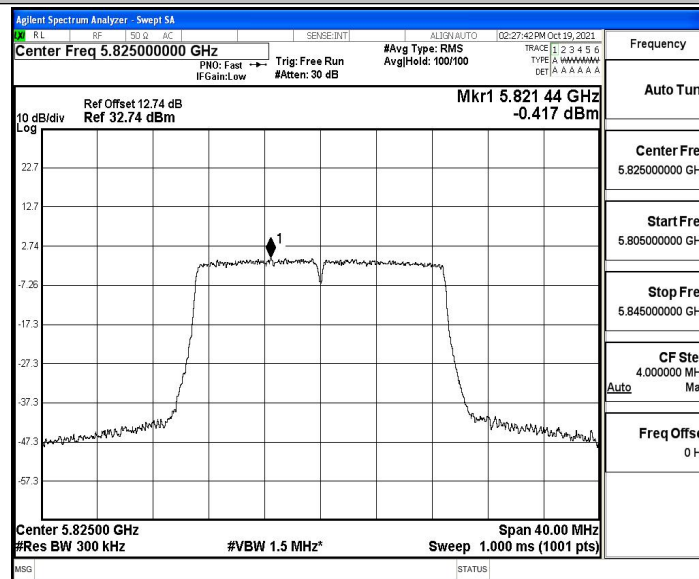


11AC20SISO_Ant4_5785

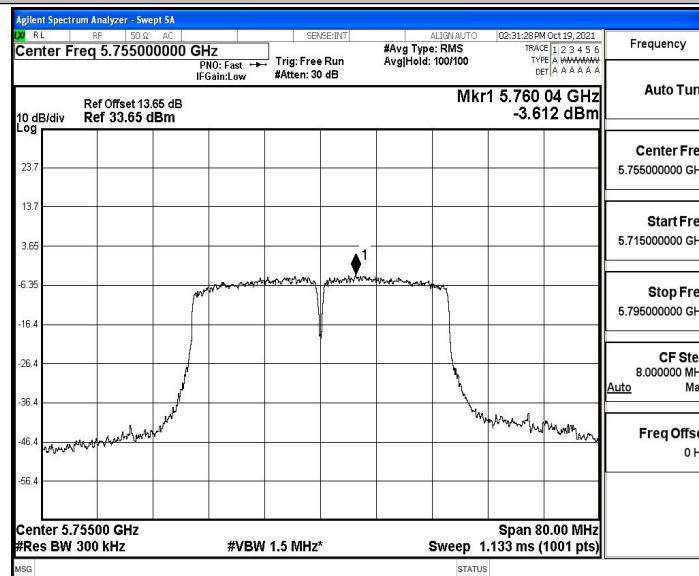




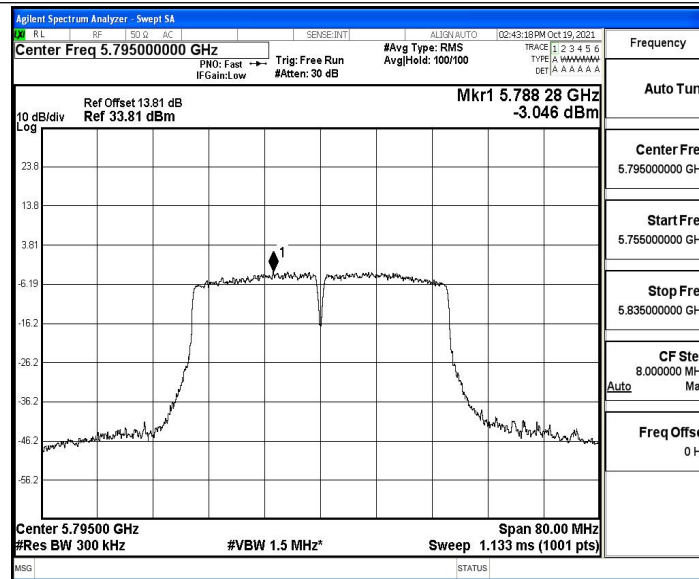
11AC20SISO_Ant4_5825



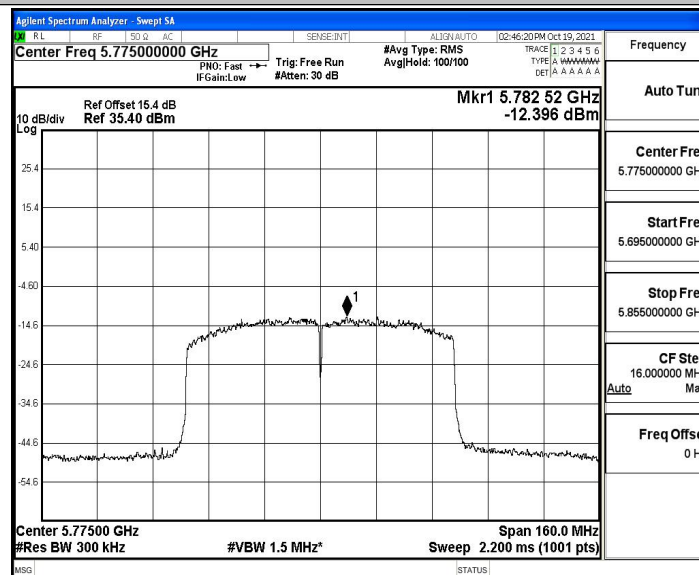
11AC40SISO_Ant4_5755



11AC40SISO_Ant4_5795



11AC80SISO_Ant4_5775





MIMO

Test Mode	Frequency (MHz)	ANT 1 Power Density (dBm /MHz)	ANT 2 Power Density (dBm /MHz)	ANT 3 Power Density (dBm /MHz)	ANT 4 Power Density (dBm /MHz)	MIMO Power Density (dBm /MHz)	Limit (dBm /MHz)	Verdict
11N20	5745	-1.52	-1.7	-1.52	-1.8	4.39	≤30	Pass
	5785	-0.35	-0.39	-0.61	-0.67	2.64		Pass
	5825	0.26	0.17	-0.04	2.33	3.23		Pass
11N40	5755	-3.71	-3.82	-4.09	-3.47	-0.75	≤30	Pass
	5795	-2.51	-2.36	-2.44	-2.78	0.58		Pass
11AC20	5745	-1.34	-1.51	-1.26	-2.04	4.49	≤30	Pass
	5785	-0.75	-0.24	-0.39	-0.71	2.52		Pass
	5825	0.18	0.24	0.03	-0.42	3.22		Pass
11AC40	5755	-3.27	-3.25	-3.21	-3.61	-0.25	≤30	Pass
	5795	-2.61	-2.47	-1.99	-3.05	0.47		Pass
11AC80	5775	-5.36	-5.26	-5.33	-12.4	-2.3	≤30	Pass



C.4 Emissions in Restricted Bands

Test Result

ANT1

TestMode	Antenna	ChName	Channel	Detector	Freq. [MHz]	Result [dBm]	Limit [dBm]	Result [dBuV/m]	Limit [dBuV/m]	Verdict
11A	Ant1	Low	5745	Peak	5650.000	-40.835	≤-27.00	---	---	PASS
				Peak	5700.000	-40.24	≤10.00	---	---	PASS
				Peak	5720.000	-34.01	≤15.60	---	---	PASS
				Peak	5725.000	-30.25	≤27.00	---	---	PASS
		High	5825	Peak	5850.000	-34.982	≤15.60	---	---	PASS
				Peak	5855.000	-38.71	≤27.00	---	---	PASS
				Peak	5875.000	-39.7	≤15.60	---	---	PASS
				Peak	5925.000	-40.65	≤10.00	---	---	PASS
11N20SISO	Ant1	Low	5745	Peak	5650.000	-40.104	≤-27.00	---	---	PASS
				Peak	5700.000	-41.45	≤10.00	---	---	PASS
				Peak	5720.000	-36.97	≤15.60	---	---	PASS
				Peak	5725.000	-33.42	≤27.00	---	---	PASS
		High	5825	Peak	5850.000	-35.258	≤15.60	---	---	PASS
				Peak	5855.000	-38.97	≤27.00	---	---	PASS
				Peak	5875.000	-40.72	≤15.60	---	---	PASS
				Peak	5925.000	-41	≤10.00	---	---	PASS
11N40SISO	Ant1	Low	5755	Peak	5650.000	-41.673	≤-27.00	---	---	PASS
				Peak	5700.000	-39.09	≤10.00	---	---	PASS
				Peak	5720.000	-32.08	≤15.60	---	---	PASS
				Peak	5725.000	-20.97	≤27.00	---	---	PASS
		High	5795	Peak	5850.000	-39.309	≤15.60	---	---	PASS
				Peak	5855.000	-40.52	≤27.00	---	---	PASS
				Peak	5875.000	-40.26	≤15.60	---	---	PASS
				Peak	5925.000	-40.87	≤10.00	---	---	PASS
11AC20SISO	Ant1	Low	5745	Peak	5650.000	-41.297	≤-27.00	---	---	PASS
				Peak	5700.000	-41.32	≤10.00	---	---	PASS
				Peak	5720.000	-35.09	≤15.60	---	---	PASS
				Peak	5725.000	-32.02	≤27.00	---	---	PASS
		High	5825	Peak	5850.000	-37.542	≤15.60	---	---	PASS
				Peak	5855.000	-37.75	≤27.00	---	---	PASS
				Peak	5875.000	-39.47	≤15.60	---	---	PASS
				Peak	5925.000	-40.04	≤10.00	---	---	PASS
11AC40SISO	Ant1	Low	5755	Peak	5650.000	-40.397	≤-27.00	---	---	PASS
				Peak	5700.000	-37.36	≤10.00	---	---	PASS
				Peak	5720.000	-31.54	≤15.60	---	---	PASS



		High	5795	Peak	5725.000	-31.67	≤27.00	- - -	- - -	PASS
				Peak	5850.000	-37.972	≤15.60	---	---	PASS
				Peak	5855.000	-40.02	≤27.00	---	---	PASS
				Peak	5875.000	-38.57	≤15.60	---	---	PASS
				Peak	5925.000	-40.8	≤10.00	- - -	- - -	PASS
11AC80SI SO	Ant1	Low	5775	Peak	5650.000	-39.866	≤-27.00	---	---	PASS
				Peak	5700.000	-33.06	≤10.00	---	---	PASS
				Peak	5720.000	-27.44	≤15.60	---	---	PASS
				Peak	5725.000	-29.3	≤27.00	- - -	- - -	PASS
		High	5775	Peak	5850.000	-29.012	≤15.60	---	---	PASS
				Peak	5855.000	-30.65	≤27.00	---	---	PASS
				Peak	5875.000	-36.66	≤15.60	---	---	PASS
				Peak	5925.000	-40.4	≤10.00	- - -	- - -	PASS

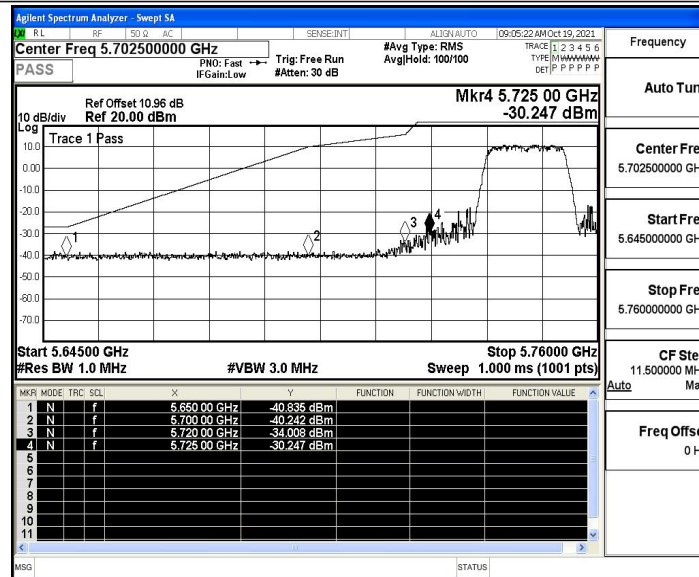
Note:

1. The Antenna Gain is compensated in the graph.
2. For transmitters operating in 5150-5350 GHz band and 5470-5725 GHz band: The limit in dBm for average detector is conversion from 54dBuV/m, according to 15.209(a). The limit in dBm for peak detector is 20dB above the limit of average detector in dBm.



Test Graphs

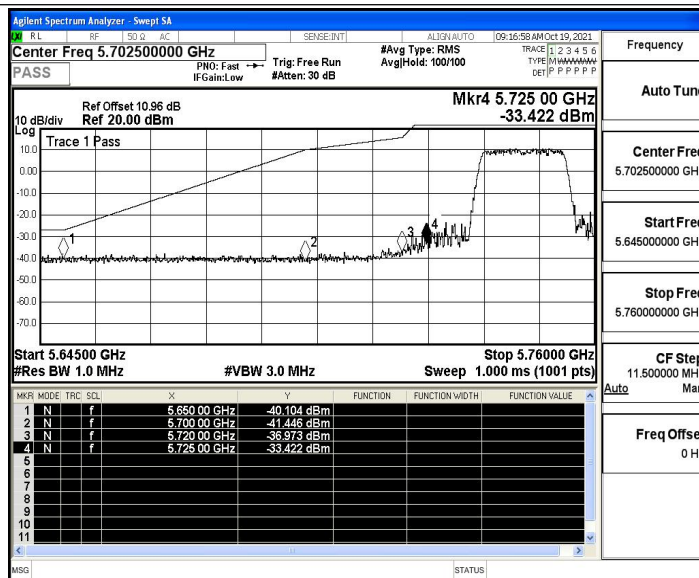
11A_Ant1_Low_5745_Peak



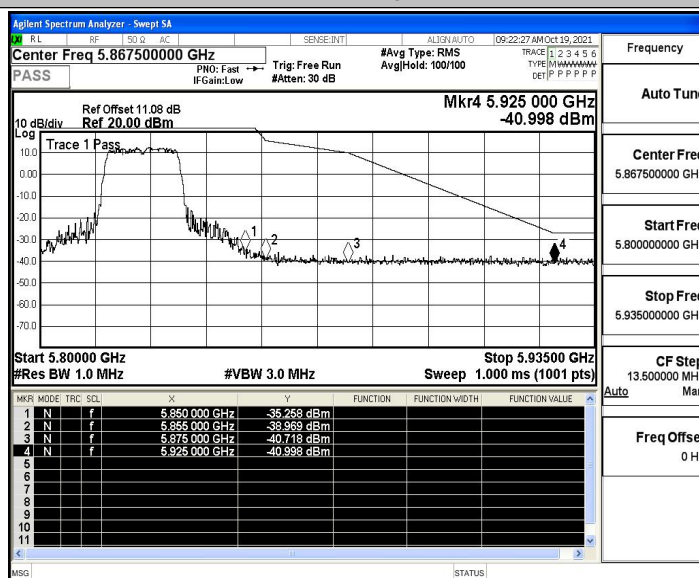
11A_Ant1_High_5825_Peak



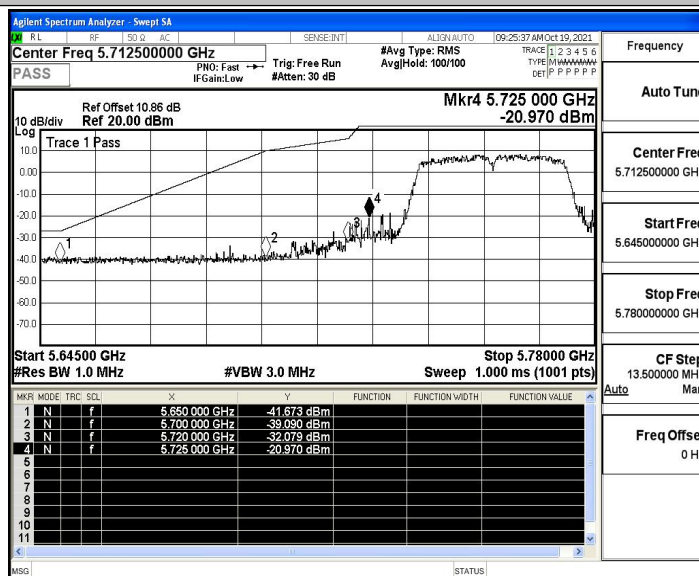
11N20SISO_Ant1_Low_5745_Peak



11N20SISO_Ant1_High_5825_Peak

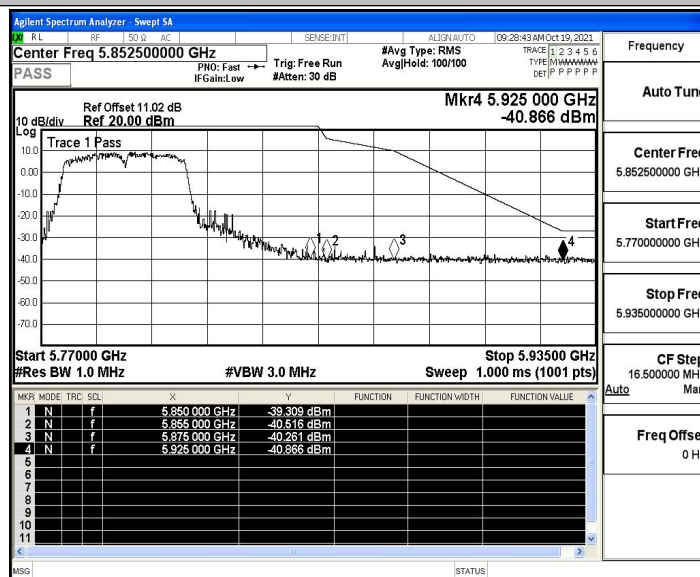


11N40SISO_Ant1_Low_5755_Peak

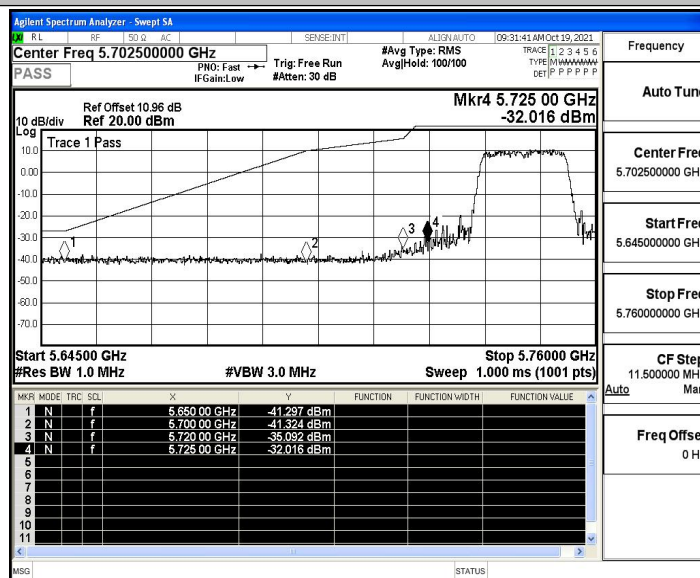




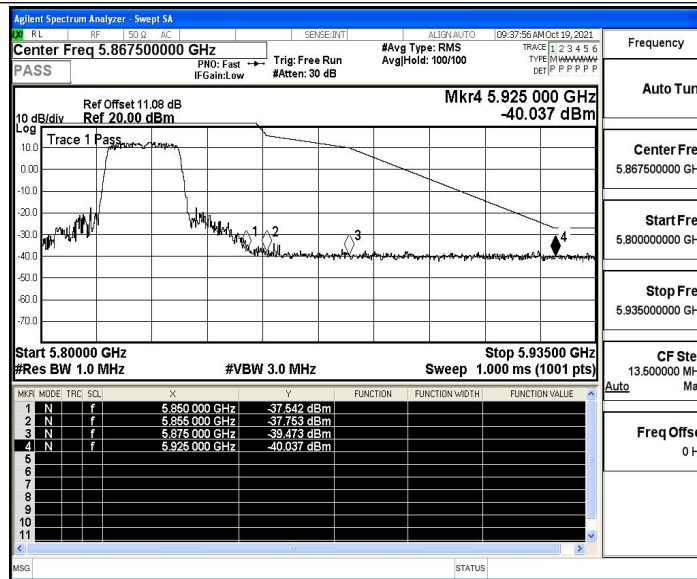
11N40SISO_Ant1_High_5795_Peak



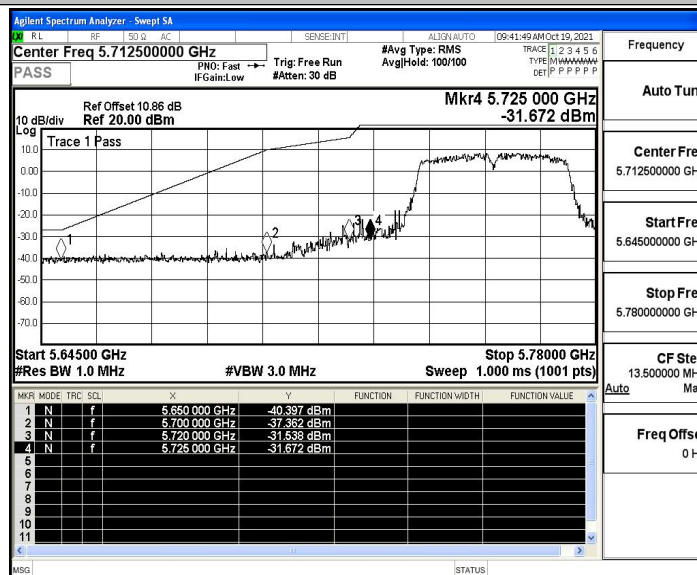
11AC20SISO_Ant1_Low_5745_Peak



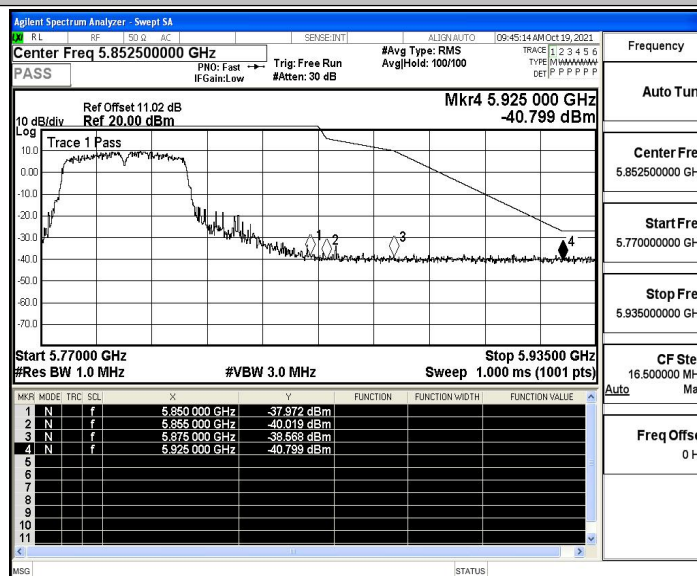
11AC20SISO_Ant1_High_5825_Peak



11AC40SISO_Ant1_Low_5755_Peak

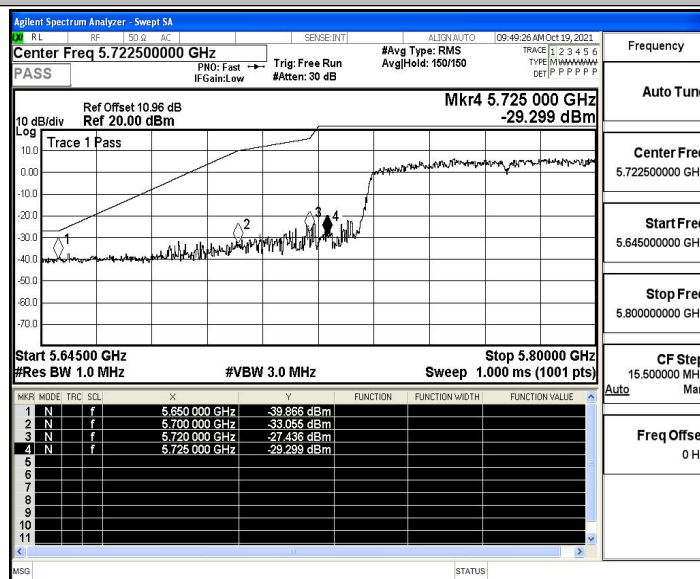


11AC40SISO_Ant1_High_5795_Peak

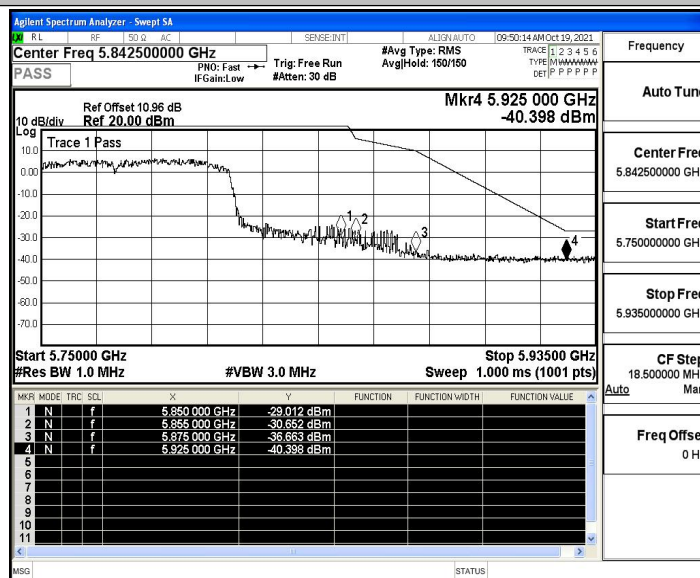




11AC80SISO_Ant1_Low_5775_Peak



11AC80SISO_Ant1_High_5775_Peak





ANT2

TestMode	Antenna	ChName	Channel	Detector	Freq. [MHz]	Result [dBm]	Limit [dBm]	Result [dBuV/m]	Limit [dBuV/m]	Verdict
11A	Ant2	Low	5745	Peak	5650.000	-40.218	≤-27.00	---	---	PASS
				Peak	5700.000	-41.02	≤10.00	---	---	PASS
				Peak	5720.000	-39.06	≤15.60	---	---	PASS
				Peak	5725.000	-31.58	≤27.00	---	---	PASS
		High	5825	Peak	5850.000	-36.813	≤15.60	---	---	PASS
				Peak	5855.000	-38.92	≤27.00	---	---	PASS
				Peak	5875.000	-39.37	≤15.60	---	---	PASS
				Peak	5925.000	-40.35	≤10.00	---	---	PASS
11N20SIS O	Ant2	Low	5745	Peak	5650.000	-40.46	≤-27.00	---	---	PASS
				Peak	5700.000	-41	≤10.00	---	---	PASS
				Peak	5720.000	-35.33	≤15.60	---	---	PASS
				Peak	5725.000	-36.2	≤27.00	---	---	PASS
		High	5825	Peak	5850.000	-35.081	≤15.60	---	---	PASS
				Peak	5855.000	-38.24	≤27.00	---	---	PASS
				Peak	5875.000	-40.07	≤15.60	---	---	PASS
				Peak	5925.000	-40.88	≤10.00	---	---	PASS
11N40SIS O	Ant2	Low	5755	Peak	5650.000	-40.67	≤-27.00	---	---	PASS
				Peak	5700.000	-39.39	≤10.00	---	---	PASS
				Peak	5720.000	-34.47	≤15.60	---	---	PASS
				Peak	5725.000	-33.66	≤27.00	---	---	PASS
		High	5795	Peak	5850.000	-38.317	≤15.60	---	---	PASS
				Peak	5855.000	-40.07	≤27.00	---	---	PASS
				Peak	5875.000	-40.55	≤15.60	---	---	PASS
				Peak	5925.000	-39.89	≤10.00	---	---	PASS
11AC20SI SO	Ant2	Low	5745	Peak	5650.000	-40.591	≤-27.00	---	---	PASS
				Peak	5700.000	-39.16	≤10.00	---	---	PASS
				Peak	5720.000	-37.8	≤15.60	---	---	PASS
				Peak	5725.000	-30.84	≤27.00	---	---	PASS
		High	5825	Peak	5850.000	-29.21	≤15.60	---	---	PASS
				Peak	5855.000	-39.63	≤27.00	---	---	PASS
				Peak	5875.000	-39.2	≤15.60	---	---	PASS
				Peak	5925.000	-40.34	≤10.00	---	---	PASS
11AC40SI SO	Ant2	Low	5755	Peak	5650.000	-41.375	≤-27.00	---	---	PASS
				Peak	5700.000	-36.4	≤10.00	---	---	PASS
				Peak	5720.000	-32.7	≤15.60	---	---	PASS
				Peak	5725.000	-27.69	≤27.00	---	---	PASS
		High	5795	Peak	5850.000	-39.758	≤15.60	---	---	PASS
				Peak	5855.000	-38.41	≤27.00	---	---	PASS
				Peak	5875.000	-39.62	≤15.60	---	---	PASS
				Peak	5925.000	-39.06	≤10.00	---	---	PASS



11AC80SI SO	Ant2	Low	5775	Peak	5650.000	-40.403	≤ -27.00	---	---	PASS
				Peak	5700.000	-33.84	≤ 10.00	---	---	PASS
				Peak	5720.000	-33.13	≤ 15.60	---	---	PASS
				Peak	5725.000	-27.81	≤ 27.00	---	---	PASS
		High	5775	Peak	5850.000	-31.226	≤ 15.60	---	---	PASS
				Peak	5855.000	-34.35	≤ 27.00	---	---	PASS
				Peak	5875.000	-35.08	≤ 15.60	---	---	PASS
				Peak	5925.000	-40.54	≤ 10.00	---	---	PASS

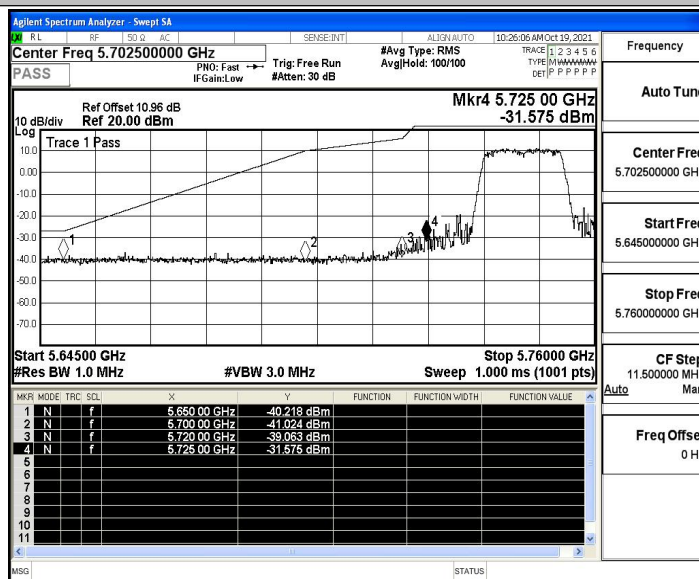
Note:

3. The Antenna Gain is compensated in the graph.
4. For transmitters operating in 5150-5350 GHz band and 5470-5725 GHz band: The limit in dBm for average detector is conversion from 54dBuV/m, according to 15.209(a). The limit in dBm for peak detector is 20dB above the limit of average detector in dBm.

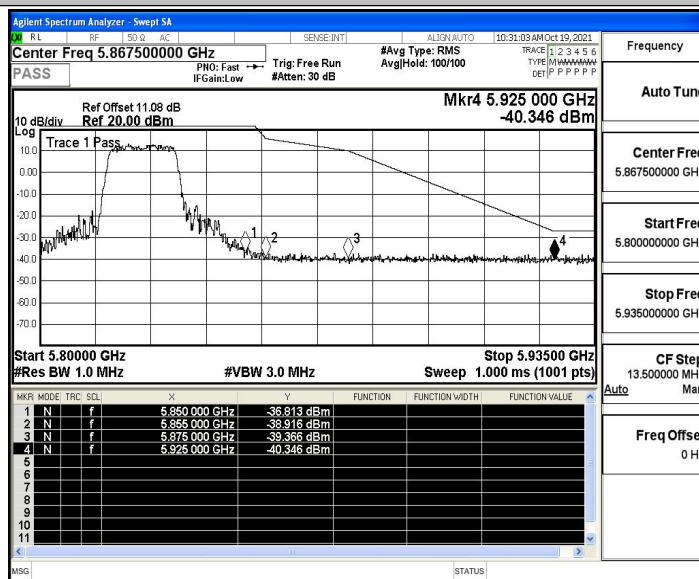


Test Graphs

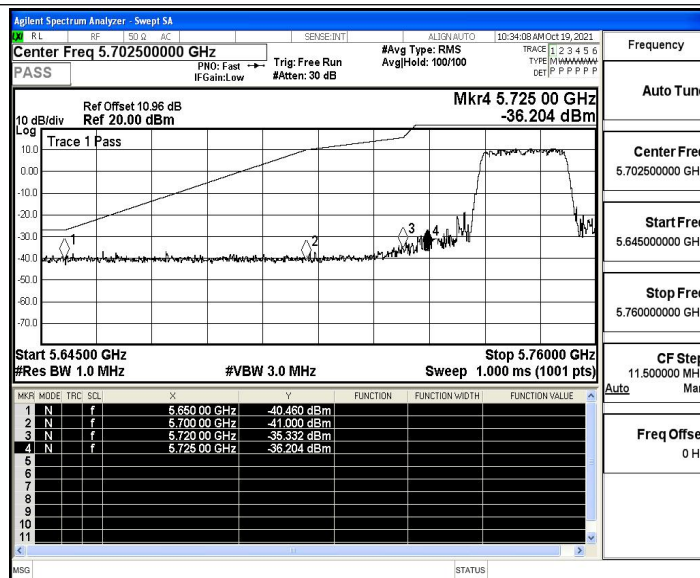
11A_Ant2_Low_5745_Peak



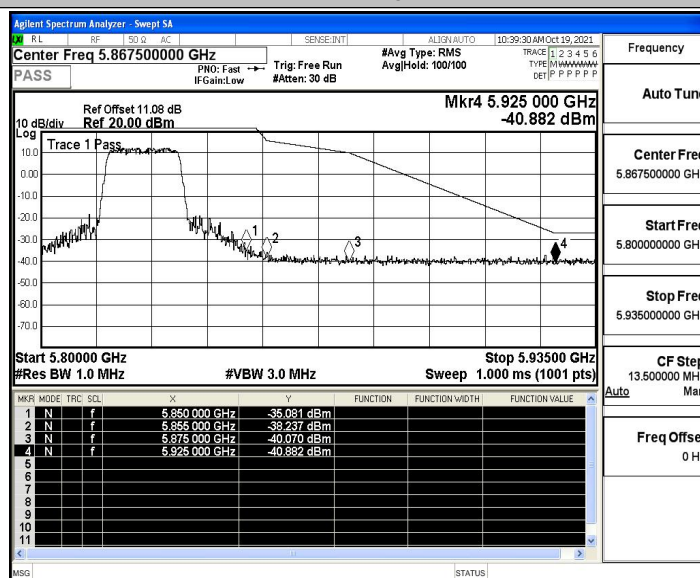
11A_Ant2_High_5825_Peak



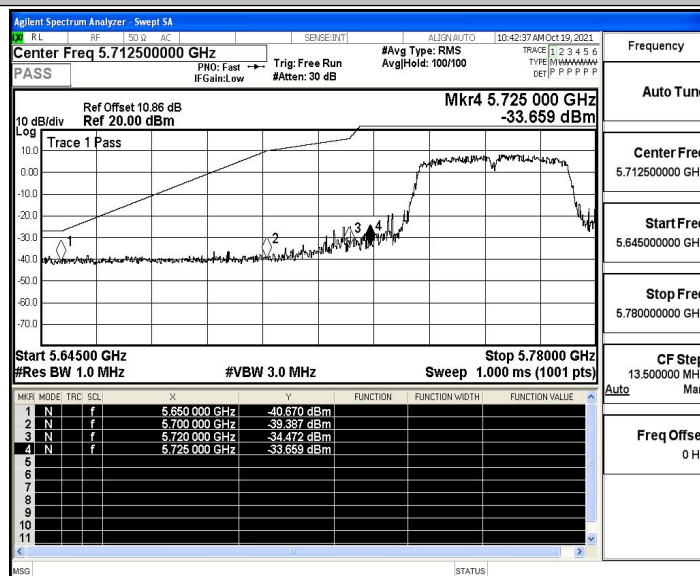
11N20SISO_Ant2_Low_5745_Peak



11N20SISO_Ant2_High_5825_Peak

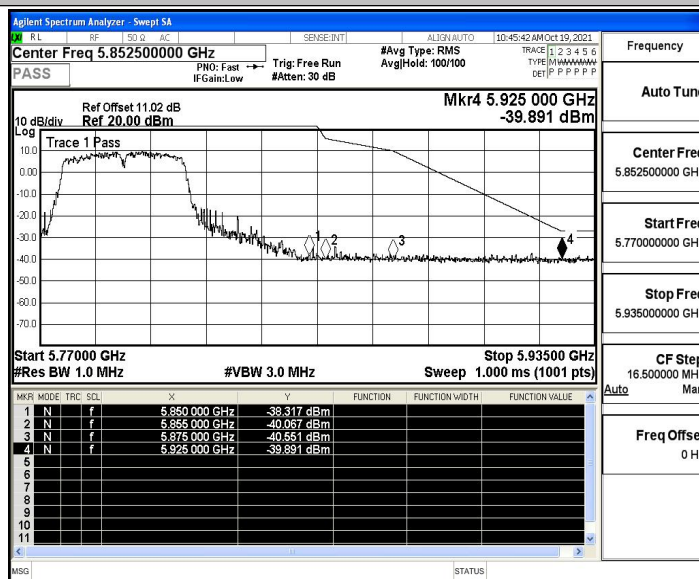


11N40SISO_Ant2_Low_5755_Peak

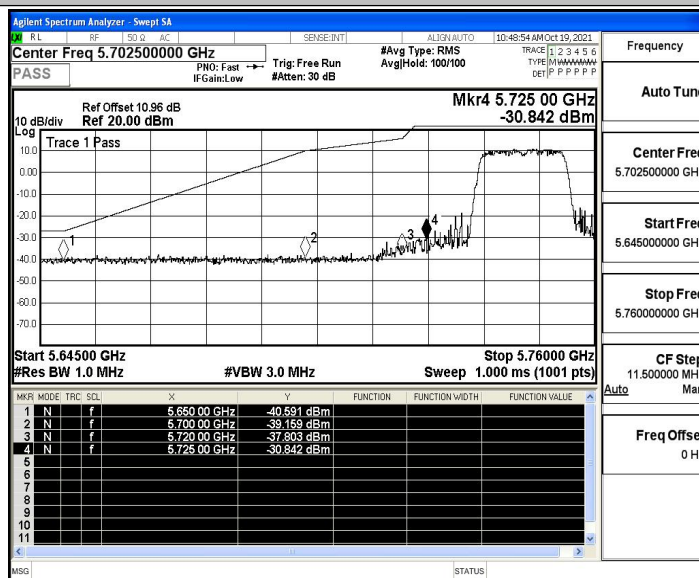




11N40SISO_Ant2_High_5795_Peak



11AC20SISO_Ant2_Low_5745_Peak



11AC20SISO_Ant2_High_5825_Peak