

# USER MANUAL

## Ocean Waves PROJECTOR NIGHT LIGHT

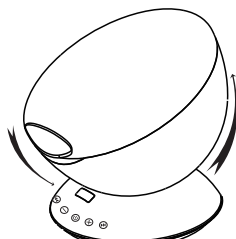
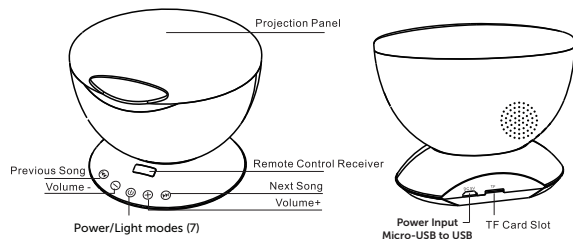


collectivegoods.com

Thank you for purchasing the Ocean Waves Projector Nigt Light. Sit back and watch an extraordinary light show featuring multiple colors and modes while enjoying the soothing sounds of built-in sounds of nature, or your own recordings via a Bluetooth® connecton, or with music from your TF Card.

### PARTS AND FEATURES

- 7 colorful lights and rotating mode
- 12 bright led beads
- Smart touch sensor keys
- Remote control
- Adjustable base angle
- Built-in music and speaker
- Bluetooth® connectivity
- TF card slot
- 1Hr/2Hr/4Hr auto off timer

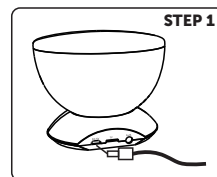


Adjustable Angle

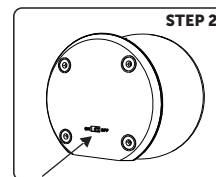
### SPECIFICATIONS

Rated volt/current: DC5V/1A  
Rated power: 2W  
Speaker: 4Ω/3W  
Respond frequency: 160Hz-20KHz  
Motor specification: 5V/13 circle  
Product material: ABS/PC/Metal/  
Electronic components  
USB cable length: 2 ft

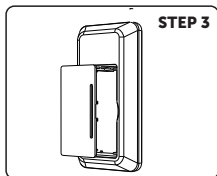
### SETUP INSTRUCTIONS



Connect the included MicroUSB/USB power cord to any USB power source such as your computer or USB wall plug adapter (not included).\*



Turn over projector and slide switch to ON.



Open remote back and insert 2 AAA batteries using correct polarity.



Press the ⏻ Power sensor button to turn on lights and music. You can also turn on the unit using the remote control. Press and hold for 2 seconds to turn off unit.

### 4 SOOTHING SOUND EFFECTS

1. Forest environment
2. Ocean waves and gulls
3. Babbling brook and birds
4. Sounds of nature

### 7 COLOR-CHANGING LIGHT MODES:

- Romantic Atmosphere
- Colorful
- Purple Atmosphere
- Ocean
- Aurora Borealis
- Magic Zone
- Disco Effect

### OPERATING INSTRUCTIONS FROM THE BASE UNIT

1. Touch and hold the Start button (see STEP 4). This will start the unit and automatically turn on the first lighting effect and sound track.
2. Tap the Start button sequentially to cycle through the 7 different built-in lighting effects and 4 sound tracks.
3. Press the ⏮ button to advance to the next sound.
4. Press the ⏪ button to go back to the previous sound.
5. Press + to increase volume and press - to decrease volume.
6. The built-in sound effects will shut off when you pair with a Bluetooth® device or by using a TF card (not included).
7. Control your external audio from your selected device or from the remote control.\*
8. Touch and hold the Start button to shut down.

### HOW TO CONNECT (PAIR) WITH ANY BLUETOOTH®-READY DEVICE

1. Press and hold the Power button until you hear a voice indicating the Bluetooth® speaker is ready to pair with your device.
2. Go to the Bluetooth® setting on your smartphone or device, and search and select Bluetooth® "Ocean Wave BT". An audible voice will indicate that you have paired successfully.

\*3. You can control your music volume, next track, previous track and pause/play with the remote control.

### AUDIO CONNECTION OPTIONS



Connect to your phone or other Bluetooth®-ready device

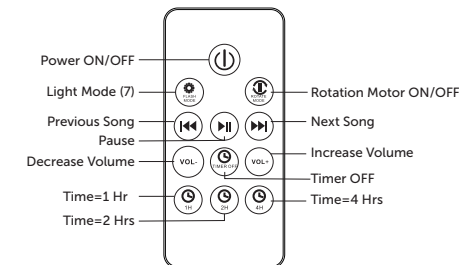


Insert a TF card (not included)

### CAUTION

This is not a toy. Adult supervision is recommended.  
Always place unit on a hard, level surface.  
Keep away from high heat and humidity when storing.

### REMOTE CONTROL OPERATING INSTRUCTIONS



Aim the remote control towards the Control Receiver on the front of the unit. Remote can work up to 20 ft away.

1. Press the Power button to start the unit. This will automatically turn on the first lighting effect and sound track.  
**REMEMBER:** The unit must be plugged into a USB power source and the bottom switch turned ON.
2. Press the Light Mode button sequentially to cycle through the 7 different built-in lighting effects and the 8th to turn lights off.
3. To experience the lights in motion, or stop lights from moving, press the ⏻ button.
3. Press the ⏮ button to advance through the 4 sound effects. Press the ⏪ button to go to previous sound. Press ⏭ to pause sound effect.
4. Press VOL+ or VOL- for gradual volume control
6. To set the auto timer for the lights, press 1H/2H/4H on the remote.
7. Press the ⏻ button, to cancel the timer.
8. Press and hold the Power button to shut down.

FCC Warning  
This device complies with part 15 of the FCC rules. Operation is subject to the following two conditions: (1) this device may not cause harmful interference, and (2) this device must accept any interference received, including interference that may cause undesired operation.  
Changes or modifications not expressly approved by the party responsible for compliance could void the user's authority to operate the equipment.  
NOTE: This equipment has been tested and found to comply with the limits for a Class B digital device, pursuant to part 15 of the FCC Rules. These limits are designed to provide reasonable protection against harmful interference in a residential installation. This equipment generates uses and can radiate radio frequency energy and, if not installed and used in accordance with the instructions, may cause harmful interference to radio communications. However, there is no guarantee that interference will not occur in a particular installation. If this equipment does cause harmful interference to radio or television reception, which can be determined by turning the equipment off and on, the user is encouraged to try to correct the interference by one or more of the following measures:  
•Reorient or relocate the receiving antenna.  
•Increase the separation between the equipment and receiver.  
•Connect the equipment into an outlet on a circuit different from that to which the receiver is connected.  
•Consult the dealer or an experienced radio/TV technician for help.  
Radiation Exposure Statement  
This equipment complies with FCC radiation exposure limits set forth for an uncontrolled environment. This equipment should be installed and operated with minimum distance 20cm between the radiator and your body.