

TEST REPORT

Reference No..... : WTX25X07188392W008
FCC ID : 2A2P9-MT001
Applicant : EcoFlow Inc.
Address : RM 401, Plant #1, Runheng Industrial Zone, Fuhai Street, Bao'an District,
Shenzhen, 518000 China
Manufacturer : EcoFlow Inc.
Address : RM 401, Plant #1, Runheng Industrial Zone, Fuhai Street, Bao'an District,
Shenzhen, 518000 China
Product Name : EcoFlow PowerInsight 2 Monitor
Model No..... : EF-MT-002
Standards : FCC Part 2.1093,
IEEE Std C95.1: 2019
IEEE C95.3: 2021
Date of Receipt sample : 2025-07-16
Date of Test..... : 2025-07-16 to 2025-08-22
Date of Issue : 2025-08-22
Test Report Form No. : WTX_Part2_1093W
Test Result..... : **Pass**

Remarks:

The results shown in this test report refer only to the sample(s) tested, this test report cannot be reproduced, except in full, without prior written permission of the company. The report would be invalid without specific stamp of test institute and the signatures of approver.

Prepared By:

Waltek Testing Group (Shenzhen) Co., Ltd.

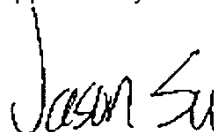
Address: 1/F., Room 101, Building 1, Hongwei Industrial Park, Liuxian 2nd Road,
Block 70 Bao'an District, Shenzhen, Guangdong, China
Tel.: +86-755-33663308 Fax.: +86-755-33663309 Email: sem@waltek.com.cn

Tested by:



Lily Yang /Project Engineer

Approved by:



Jason Su/Manager

TABLE OF CONTENTS

1. General Information4
 1.1 Product Description for Equipment Under Test (EUT)4
 1.2 Test Standards6
 1.3 Test Methodology6
 1.4 Test Facility6

2. Summary of Test Results7

3. Specific Absorption Rate (SAR).....8
 3.1 Introduction.....8
 3.2 SAR Definition8

4. SAR Measurement System.....9
 4.1 The Measurement System9
 4.2 Probe.....9
 4.3 Probe Calibration Process.....11
 4.4 Phantom11
 4.5 Device Holder.....12
 4.6 Test Equipment List.....13

5. Tissue Simulating Liquids.....14
 5.1 Composition of Tissue Simulating Liquid.....14
 5.2 Tissue Dielectric Parameters for Head and Body Phantoms.....15
 5.3 Tissue Calibration Result.....16

6. SAR Measurement Evaluation17
 6.1 Purpose of System Performance Check.....17
 6.2 System Setup17
 6.3 Validation Results.....18

7. EUT Testing Position19
 7.1 Body Position19
 7.2 EUT Antenna Position19
 7.3 EUT Testing Position.....20

8. SAR Measurement Procedures.....22
 8.1 Measurement Procedures22
 8.2 Spatial Peak SAR Evaluation22
 8.3 Area & Zoom Scan Procedures.....23
 8.4 Volume Scan Procedures.....23
 8.5 SAR Averaged Methods23
 8.6 Power Drift Monitoring.....23

9. SAR Test Result24
 9.1 Conducted RF Output Power24
 9.2 Test Results for Standalone SAR Test.....36
 9.3 Simultaneous Multi-band Transmission SAR Analysis40

10. Measurement Uncertainty43
 10.1 Uncertainty for SAR Test.....43

Annex A. Plots of System Performance Check45
Annex B. Plots of SAR Measurement55
Annex C. EUT Photos81
Annex D. Test Setup Photos81
Annex E. Calibration Certificate.....81

Report version

Version No.	Date of issue	Description
Rev.00	2025-08-22	Original
/	/	/

1. General Information

1.1 Product Description for Equipment Under Test (EUT)

General Description of EUT	
Product Name:	EcoFlow PowerInsight 2 Monitor
Trade Name:	ECOFLOW; EF ECOFLOW
Model No.:	EF-MT-002
Adding Model(s):	/
Input:	Type-C DC5V3A; 9V2A; 12V1.5A
Input(Bracket):	Type-C DC5V3A; 9V3A; 12V2.5A
Output:	Type-C DC5V 0.5A
Battery Voltage:	DC3.85V
Battery Capacity:	4650mAh
Power Adapter Model:	/
<i>Note: The test data is gathered from a production sample provided by the manufacturer.</i>	

Technical Characteristics of EUT:	
WIFI(2.4GHz) (RF module Q1-C4595)	
Support Standards:	802.11b, 802.11g, 802.11n-HT20/40, 802.11ax-HE20/40
Frequency Range:	2412-2462MHz for 802.11b/g/n-HT20/ax-HE20, 2422-2452MHz for 802.11n-HT40/ax-HE40,
RF Output Power:	ANT1: 16.67dBm (Conducted) ANT2: 14.02dBm (Conducted)
Type of Modulation:	CCK, OFDM, QPSK, BPSK, 16QAM, 64QAM, 256QAM, 1024QAM
Quantity of Channels:	11 for 802.11b/g/n-HT20/ax-HE20, 7 for 802.11n-HT40/ax-HE40
Channel Separation:	5MHz
Antenna Type:	FPC Antenna
Antenna Gain:	ANT1: 0.78dBi ANT2: 3.6dBi
Wi-Fi(5GHz) (RF module Q1-C4595)	
Support Standards:	802.11a, 802.11n-HT20/40, 802.11ac-VHT20/40/80, 802.11ax-HE20/40/80,
Frequency Range:	5180-5240MHz, 5260-5320MHz, 5500-5700MHz, 5745-5825MHz
RF Output Power:	ANT1: 16.76dBm (Conducted) ANT2: 16.37dBm (Conducted)
Type of Modulation:	QPSK, 16QAM, 64QAM, 256QAM, 1024QAM
Type of Antenna:	FPC Antenna

Antenna Gain:	ANT1:4.59dBi ANT2:2.09dBi
Bluetooth(RF module Q1-C4595)	
Bluetooth Version:	Bluetooth V5.2
Frequency Range:	2402-2480MHz
RF Output Power:	8.02dBm (Conducted)
Modulation:	GFSK, $\pi/4$ DQPSK, 8DPSK
Quantity of Channels:	79/40
Channel Separation:	1MHz/2MHz
Antenna Type:	FPC Antenna
Antenna Gain:	1.57dBi
WIFI(2.4GHz) (RF module ESP32-S3-WROOM-1U)	
Support Standards:	802.11b, 802.11g, 802.11n-HT20/40
Frequency Range:	2412-2462MHz for 802.11b/g/n-HT20, 2422-2452MHz for 802.11n-HT40
RF Output Power:	14.41dBm (Conducted)
Type of Modulation:	CCK, OFDM, QPSK, BPSK, 16QAM, 64QAM
Quantity of Channels:	11 for 802.11b/g/n-HT20, 7 for 802.11n-HT40
Channel Separation:	5MHz
Antenna Type:	FPC Antenna
Antenna Gain:	2.81dBi
Bluetooth(RF module ESP32-S3-WROOM-1U)	
Bluetooth Version:	Bluetooth V5.0(LE mode)
Frequency Range:	2402-2480MHz
RF Output Power:	9.72dBm (Conducted)
Modulation:	GFSK
Quantity of Channels:	40
Channel Separation:	2MHz
Antenna Type:	FPC Antenna
Antenna Gain:	2.81dBi
<i>Note: The Antenna Gain is provided by the customer and can affect the validity of results.</i>	

1.2 Test Standards

The following report is accordance with FCC 47 CFR Part 2.1093, IEEE Std C95.1: 2019, IEEE C95.3: 2021, and KDB 865664 D01 v01r04 and KDB 865664 D02 v01r02 and KDB 616217 D04 v01r02 and 248227 D01 802 11 Wi-Fi SAR v02r02.

The objective is to determine compliance with FCC Part 2.1093 of the Federal Communication Commissions rules.

Maintenance of compliance is the responsibility of the manufacturer. Any modification of the product, which is result in lowering the emission, should be checked to ensure compliance has been maintained.

1.3 Test Methodology

All measurements contained in this report were conducted with KDB 865664 D01 v01r04 and KDB 865664 D02 v01r02. The public notice KDB 447498 D01 v06 for Mobile and Portable Devices RF Exposure Procedure also.

1.4 Test Facility

Address of the test laboratory

Laboratory: Waltek Testing Group (Shenzhen) Co., Ltd.

Address: 1/F., Room 101, Building 1, Hongwei Industrial Park, Liuxian 2nd Road, Block 70 Bao'an District, Shenzhen, Guangdong, China

FCC – Registration No.: 125990

Waltek Testing Group (Shenzhen) Co., Ltd. EMC Laboratory has been registered and fully described in a report filed with the FCC (Federal Communications Commission). The acceptance letter from the FCC is maintained in our files. The Designation Number is CN5010. Test Firm Registration Number is 125990.

Industry Canada (IC) Registration No.: 11464A

The 3m Semi-anechoic chamber of Waltek Testing Group (Shenzhen) Co., Ltd. has been registered by Certification and Engineering Bureau of Industry Canada for radio equipment testing with Registration No.: 11464A and the CAB identifier is CN0057.

2. Summary of Test Results

The maximum results of Specific Absorption Rate (SAR) have found during testing are as follows:

Frequency Band	Body (0mm Gap)	SAR _{1g} Limit (W/kg)
	Maximum SAR _{1g} (W/kg)	
WLAN(2.4GHz)_ANT1(RF module Q1-C4595)	0.617	1.6
WLAN(5GHz) _ANT1(RF module Q1-C4595)	0.625	1.6
Bluetooth(RF module Q1-C4595)	0.144	1.6
WLAN(2.4GHz)_ANT2(RF module Q1-C4595)	0.541	1.6
WLAN(5GHz) _ANT2(RF module Q1-C4595)	0.556	1.6
WLAN(2.4GHz) (RF module ESP32-S3-WROOM-1U)	0.646	1.6
Bluetooth (RF module ESP32-S3-WROOM-1U)	0.184	1.6
Simultaneous Transmission	1.580	1.6

The device is in compliance with Specific Absorption Rate (SAR) for general population/uncontrolled exposure limits (1.6 W/kg) specified in FCC 47 CFR Part 2.1093 and IEEE Std C95.1: 2019, and had been tested in accordance with the measurement methods and procedure specified in KDB 865664 D01 v01r04, KDB 865664 D02 v01r02.

3. Specific Absorption Rate (SAR)

3.1 Introduction

SAR is related to the rate at which energy is absorbed per unit mass in an object exposed to a radio field. The SAR distribution in a biological body is complicated and is usually carried out by experimental techniques or numerical modeling. The standard recommends limits for two tiers of groups, occupational/controlled and general population/uncontrolled, based on a person's awareness and ability to exercise control over his or her exposure. In general, occupational/controlled exposure limits are higher than the limits for general population/uncontrolled.

3.2 SAR Definition

The SAR definition is the time derivative (rate) of the incremental energy (dW) absorbed by (dissipated in) an incremental mass (dm) contained in a volume element (dv) of a given density (ρ). The equation description is as below:

$$SAR = \frac{d}{dt} \left(\frac{dW}{dm} \right) = \frac{d}{dt} \left(\frac{dW}{\rho dv} \right)$$

SAR is expressed in units of Watts per kilogram (W/kg)

SAR measurement can be either related to the temperature elevation in tissue by

$$SAR = C \left(\frac{\delta T}{\delta t} \right)$$

Where: C is the specific heat capacity, δT is the temperature rise and δt is the exposure duration, or related to the electrical field in the tissue by

$$SAR = \frac{\sigma |E|^2}{\rho}$$

Where: σ is the conductivity of the tissue, ρ is the mass density of the tissue and E is the RMS electrical field strength.

However for evaluating SAR of low power transmitter, electrical field measurement is typically applied.

4. SAR Measurement System

4.1 The Measurement System

Comosar is a system that is able to determine the SAR distribution inside a phantom of human being according to different standards. The Comosar system consists of the following items:

- Main computer to control all the system
- 6 axis robot
- Data acquisition system
- Miniature E-field probe
- Phone holder
- Head simulating tissue

The following figure shows the system.

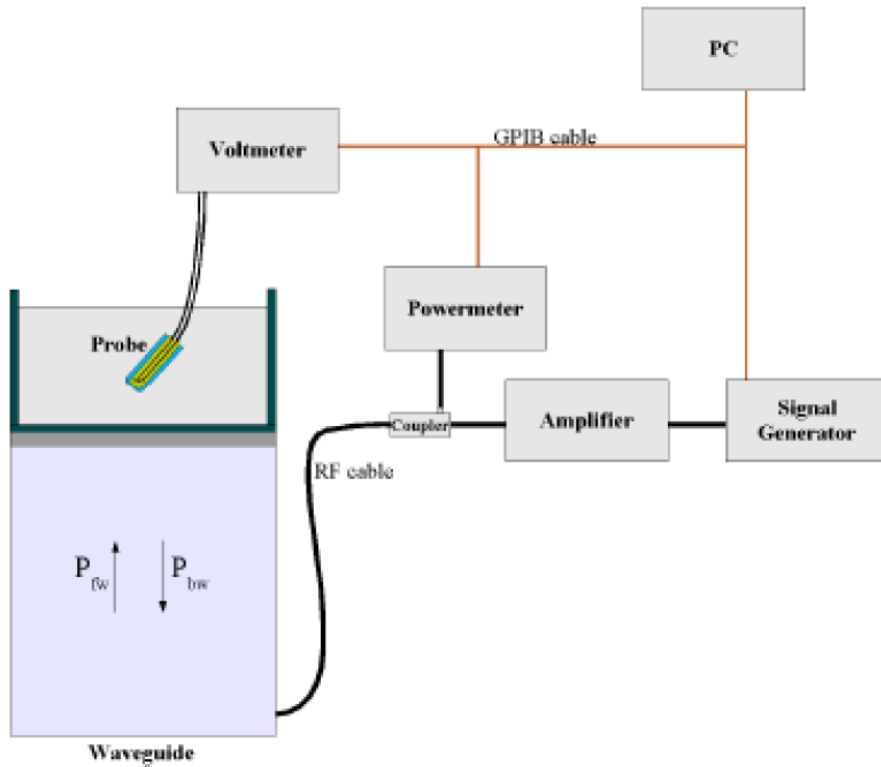


The EUT under test operating at the maximum power level is placed in the phone holder, under the phantom, which is filled with head simulating liquid. The E-Field probe measures the electric field inside the phantom. The OpenSAR software computes the results to give a SAR value in a 1g or 10g mass.

4.2 Probe

For the measurements the Specific Dosimetric E-Field Probe SSE2 0725-EPGO-446, and refer to the calibration report for probe parameters.

Probe calibration is realized, in compliance with IEC/IEEE 62209-1528:2020 STD, with CALISAR, Antenna proprietary calibration system. The calibration is performed with the IEC/IEEE 62209-1528:2020 annexes technique using reference guide at the five frequencies.



$$SAR = \frac{4(P_{fw} - P_{bw})}{ab\delta} \cos^2\left(\pi \frac{y}{a}\right) e^{-2z/\delta}$$

Where :

P_{fw} = Forward Power

P_{bw} = Backward Power

a and b = Waveguide dimensions

δ = Skin depth

Keithley configuration:

Rate = Medium; Filter = ON; RDGS = 10; Filter type = Moving Average; Range auto after each calibration, a SAR measurement is performed on a validation dipole and compared with a NPL calibrated probe, to verify it.

The calibration factors, $CF(N)$, for the 3 sensors corresponding to dipole 1, dipole 2 and dipole 3 are:

$$CF(N) = SAR(N) / V_{lin}(N) \quad (N=1,2,3)$$

The linearised output voltage $V_{lin}(N)$ is obtained from the displayed output voltage $V(N)$ using

$$V_{lin}(N) = V(N) * (1 + V(N) / DCP(N)) \quad (N=1,2,3)$$

where DCP is the diode compression point in mV.

Waltek Testing Group (Shenzhen) Co., Ltd.

[Http://www.waltek.com.cn](http://www.waltek.com.cn)

4.3 Probe Calibration Process

Dosimetric Assessment Procedure

Each E-Probe/Probe Amplifier combination has unique calibration parameters. SATIMO Probe calibration procedure is conducted to determine the proper amplifier settings to enter in the probe parameters. The amplifier settings are determined for a given frequency by subjecting the probe to a known E-field density (1 mW/cm²) using an with CALISAR, Antenna proprietary calibration system.

Free Space Assessment Procedure

The free space E-field from amplified probe outputs is determined in a test chamber. This calibration can be performed in a TEM cell if the frequency is below 1 GHz and in a waveguide or other methodologies above 1 GHz for free space. For the free space calibration, the probe is placed in the volumetric center of the cavity and at the proper orientation with the field. The probe is rotated 360 degrees until the three channels show the maximum reading. The power density readings equates to 1mW/cm².

Temperature Assessment Procedure

E-field temperature correlation calibration is performed in a flat phantom filled with the appropriate simulated head tissue. The E-field in the medium correlates with the temperature rise in the dielectric medium. For temperature correlation calibration a RF transparent thermistor-based temperature probe is used in conjunction with the E-field probe.

$$SAR = C \frac{\Delta T}{\Delta t}$$

Where:

- Δ t = exposure time (30 seconds),
- C = heat capacity of tissue (brain or muscle),
- Δ T = temperature increase due to RF exposure.

SAR is proportional to ΔT/Δt, the initial rate of tissue heating, before thermal diffusion takes place. The electric field in the simulated tissue can be used to estimate SAR by equating the thermally derived SAR to that with the E- field component.

$$SAR = \frac{|E|^2 \cdot \sigma}{\rho}$$

Where:

- σ = simulated tissue conductivity,
- ρ = Tissue density (1.25 g/cm³ for brain tissue)

4.4 Phantom

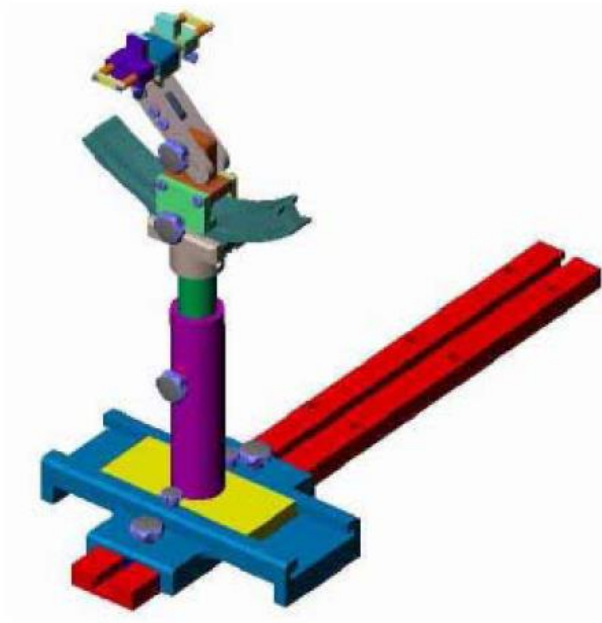
For the measurements the Specific Anthropomorphic Mannequin (SAM) defined by the IEEE SCC-34/SC2 group is used. The phantom is a polyurethane shell integrated in a wooden table. The thickness of the phantom amounts to 2mm +/- 0.2mm. It enables the dosimetric evaluation of left and right phone usage and includes an additional flat phantom part for the simplified performance check. The phantom set-up includes a

Reference No.: WTX25X07188392W008

cover, which prevents the evaporation of the liquid.

4.5 Device Holder

The positioning system allows obtaining cheek and tilting position with a very good accuracy. In compliance with CENELEC, the tilt angle uncertainty is lower than 1°.



System Material	Permittivity	Loss Tangent
Delrin	3.7	0.005

4.6 Test Equipment List

Fixed asset Number	Description	Manufacturer	Model	Serial Number	Cal. Date	Due. Date
WTXE1105A1002	E-Field Probe	MVG	SSE2	0725-EPGO-446	2025-02-12	2026-02-11
WTXE1053A1001-007	2450MHz Dipole	MVG	SID2450	SN 13/15 DIP 2G450-364	2023-08-20	2026-08-19
WTXE1035A1009	5 GHz Dipole	MVG	SID5000	SN 02/21 DIP 5G000-543	2024-07-11	2027-07-10
WTXE1053A1001-010	Dielectric Probe	SATIMO	SCLMP	SN 47/12 OCPG49	2025-02-23	2026-02-22
WTXE1075A1003	Power meter	Keithley	3500	1232959	2025-02-23	2026-02-22
WTXE1075A1002	Power meter	Keithley	3500	1162591	2025-02-23	2026-02-22
WTXE1104A1003	EXG Analog Signal Generator	KEYSIGHT	N5173B	MY61252892	2025-02-23	2026-02-22
WTXE1022A1002	GSM Tester	Rohde & Schwarz	CMU200	114403	2025-02-23	2026-02-22
WTXE1041A1002	Communications Tester	Rohde & Schwarz	CMW500	148650	2025-02-23	2026-02-22
WTXE1036A1001	Network Analyzer	Rohde & Schwarz	ZVB 8	101353	2024-10-15	2025-10-14
WTXE1076A1001	Power Divider	HP	11636B	JC-2017-10-002	2025-02-23	2026-02-22
WTXE1103A1001	Attenuator	Pasternack	PE4007-4	/	2025-02-23	2026-02-22
WTXE1103A1002	Attenuator	Pasternack	PE4007-4	/	2025-02-23	2026-02-22
WTXE1103A1003	Attenuator	Pasternack	PE4007-4	/	2025-02-23	2026-02-22

5. Tissue Simulating Liquids

5.1 Composition of Tissue Simulating Liquid

For the measurement of the field distribution inside the SAM phantom with SMTIMO, the phantom must be filled with around 25 liters of homogeneous body tissue simulating liquid. For head SAR testing, the liquid height from the ear reference point (ERP) of the phantom to the liquid top surface is larger than 15 cm. For body SAR testing, the liquid height from the center of the flat phantom to the liquid top surface is larger than 15 cm. Please see the following photos for the liquid height.



Liquid Height for Body SAR

The Composition of Tissue Simulating Liquid

The Composition of Tissue Simulating Liquid

Frequency (MHz)	Water (%)	Salt (%)	Sugar (%)	HEC (%)	Preventol (%)	DGBE (%)
Head						
750	41.1	1.4	57.0	0.2	0.3	0
835	40.3	1.38	57.9	0.24	0.18	0
900	40.3	1.38	57.9	0.24	0.18	0
1800-2000	55.24	0.31	0	0	0	44.45
2300	55.40	0.08	0	0	0	44.52
2450	55.00	0	0	0	0	45.00
2600	55.242	0.306	0	0	0	44.452

Frequency (MHz)	Water (%)	Hexyl Carbitol (%)	Triton X-100 (%)
Head			
5000-6000	65.52	17.24	17.24

5.2 Tissue Dielectric Parameters for Head and Body Phantoms

According to FCC KDBs, IEC/IEEE 62209-1528:2020 standards state that the system validation measurements must be performed using a reference dipole meeting the fore mentioned return loss and mechanical dimension requirements. The validation measurement must be performed against a liquid filled flat phantom, with the phantom constructed as outlined in the fore mentioned standards. Per the standards, the dipole shall be positioned below the bottom of the phantom, with the dipole length centered and parallel to the longest dimension of the flat phantom, with the top surface of the dipole at the described distance from the bottom surface of the phantom.

Target Frequency (MHz)	Head		Body	
	Conductivity (σ)	Permittivity (ϵ_r)	Conductivity (σ)	Permittivity (ϵ_r)
150	0.76	52.3	0.80	61.9
300	0.87	45.3	0.92	58.2
450	0.87	43.5	0.94	56.7
750	0.89	41.9	0.96	55.5
835	0.90	41.5	0.97	55.2
900	0.97	41.5	1.05	55.0
915	0.98	41.5	1.06	55.0
1450	1.20	40.5	1.30	54.0
1610	1.29	40.3	1.40	53.8
1800-2000	1.40	40.0	1.52	53.3
2100	1.49	39.8	1.62	53.2
2300	1.67	39.5	1.81	52.9
2450	1.80	39.2	1.95	52.7
2600	1.96	39.0	2.16	52.5
3000	2.40	38.5	2.73	52.0
5200	4.66	36.0	5.30	49.0
5400	4.86	35.8	5.53	48.7
5600	5.07	35.5	5.77	48.5
5800	5.27	35.3	6.00	48.2

5.3 Tissue Calibration Result

The dielectric parameters of the liquids were verified prior to the SAR evaluation using COMOSAR Dielectric Probe Kit and an Agilent Network Analyzer.

Calibration Result for Dielectric Parameters of Tissue Simulating Liquid

Head Tissue Simulating Liquid									
Freq. MHz	Temp. (°C)	Conductivity			Permittivity			Limit (%)	Date
		Reading (σ)	Target (σ)	Delta (%)	Reading (ϵ_r)	Target (ϵ_r)	Delta (%)		
2450	22.3	1.76	1.80	-2.22	40.69	39.20	3.80	±5	2025-07-18
5200	22.4	4.73	4.66	1.50	37.45	36.00	4.03	±5	2025-08-04
5400	22.4	4.89	4.86	0.62	37.01	35.80	3.38	±5	2025-08-12
5600	22.5	5.09	5.07	0.39	36.65	35.50	3.24	±5	2025-08-14
5800	22.5	5.32	5.27	0.95	36.05	35.30	2.12	±5	2025-08-18
2402	22.3	1.75	1.80	-2.78	40.66	39.20	3.72	±5	2025-07-18
2412	22.3	1.76	1.80	-2.22	40.67	39.20	3.75	±5	2025-07-18
2437	22.3	1.76	1.80	-2.22	40.68	39.20	3.78	±5	2025-07-18
2440	22.3	1.76	1.80	-2.22	40.69	39.20	3.80	±5	2025-07-18
2441	22.3	1.76	1.80	-2.22	40.69	39.20	3.80	±5	2025-07-18
2462	22.3	1.76	1.80	-2.22	40.70	39.20	3.83	±5	2025-07-18
2480	22.3	1.76	1.80	-2.22	40.71	39.20	3.85	±5	2025-07-18
5180	22.4	4.73	4.66	1.50	37.45	36.00	4.03	±5	2025-08-04
5240	22.4	4.73	4.66	1.50	37.43	36.00	3.97	±5	2025-08-04
5260	22.4	4.73	4.66	1.50	37.41	36.00	3.92	±5	2025-08-04
5280	22.4	4.74	4.66	1.72	37.39	36.00	3.86	±5	2025-08-04
5320	22.4	4.89	4.86	0.62	37.01	35.80	3.38	±5	2025-08-12
5500	22.5	5.08	5.07	0.39	36.61	35.50	3.13	±5	2025-08-14
5510	22.5	5.09	5.07	0.39	36.63	35.50	3.18	±5	2025-08-14
5580	22.5	5.09	5.07	0.39	36.66	35.50	3.27	±5	2025-08-14
5590	22.5	5.09	5.07	0.39	36.65	35.50	3.24	±5	2025-08-14
5670	22.5	5.10	5.07	0.39	36.67	35.50	3.30	±5	2025-08-14
5700	22.5	5.31	5.27	0.76	36.11	35.30	2.29	±5	2025-08-18
5745	22.5	5.31	5.27	0.76	36.09	35.30	2.24	±5	2025-08-18
5755	22.5	5.32	5.27	0.95	36.08	35.30	2.21	±5	2025-08-18
5785	22.5	5.32	5.27	0.95	36.07	35.30	2.18	±5	2025-08-18
5795	22.5	5.32	5.27	0.95	36.05	35.30	2.12	±5	2025-08-18
5825	22.5	5.32	5.27	0.95	36.04	35.30	2.10	±5	2025-08-18

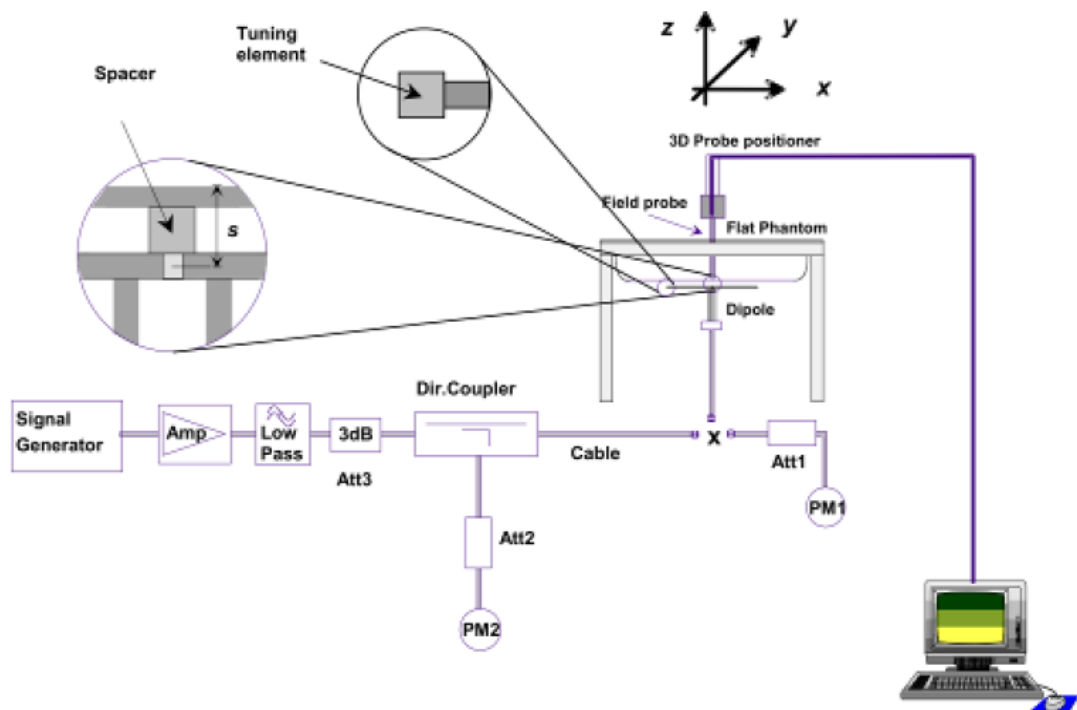
6. SAR Measurement Evaluation

6.1 Purpose of System Performance Check

The system performance check verifies that the system operates within its specifications. System and operator errors can be detected and corrected. It is recommended that the system performance check be performed prior to any usage of the system in order to guarantee reproducible results. The system performance check uses normal SAR measurements in a simplified setup with a well characterized source. This setup was selected to give a high sensitivity to all parameters that might fail or vary over time. The system check does not intend to replace the calibration of the components, but indicates situations where the system uncertainty is exceeded due to drift or failure.

6.2 System Setup

In the simplified setup for system evaluation, the EUT is replaced by a calibrated dipole and the power source is replaced by a continuous wave which comes from a signal generator at frequency 2450MHz and 5000MHz. The calibrated dipole must be placed beneath the flat phantom section of the SAM twin phantom with the correct distance holder. The distance holder should touch the phantom surface with a light pressure at the reference marking and be oriented parallel to the long side of the phantom.



System Verification Setup Block Diagram



Setup Photo of Dipole Antenna

The output power on dipole port must be calibrated to 24 dBm(250 mW) before dipole is connected.

6.3 Validation Results

Comparing to the original SAR value provided by SATIMO, the validation data should be within its specification of 10 %. Table 6.1 shows the target SAR and measured SAR after normalized to 1W input power. The table below indicates the system performance check can meet the variation criterion.

Frequency	Power	Targeted SAR _{1g}	Measured SAR _{1g}	Normalized SAR _{1g}	Tolerance	Date
MHz	(mw)	(W/kg)	(W/kg)	(W/kg)	(%)	
Head						
2450	250	53.76	13.747	54.988	2.28	2025-07-18
2600	250	56.81	14.815	59.26	4.31	2025-08-04
5400	250	79.56	18.979	75.916	-4.58	2025-08-12
5600	250	78.31	19.008	76.032	-2.91	2025-08-14
5800	250	78.05	18.087	72.348	-7.31	2025-08-18

Targeted and Measurement SAR

Please refer to Annex A for the plots of system performance check.

7. EUT Testing Position

7.1 Body Position

- (a) To position the device parallel to the phantom surface with each side.
- (b) To adjust the device parallel to the flat phantom.
- (c) To adjust the distance between the device surface and the flat phantom to 0mm.

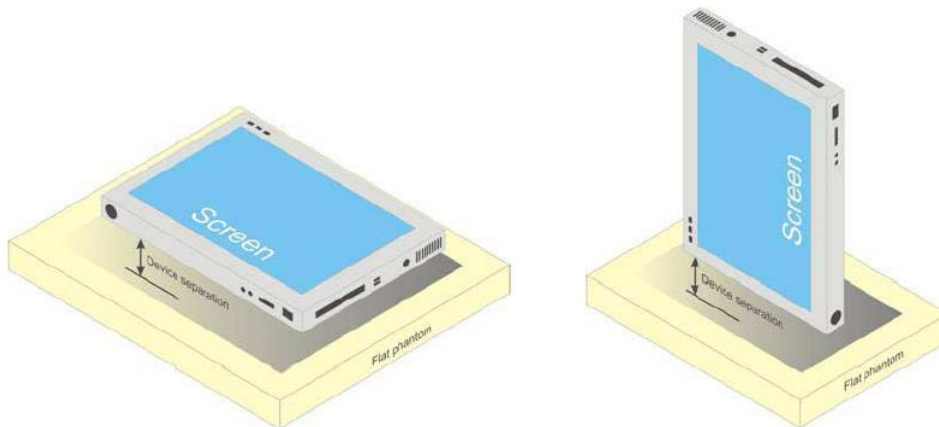


Illustration for Body Position

7.2 EUT Antenna Position

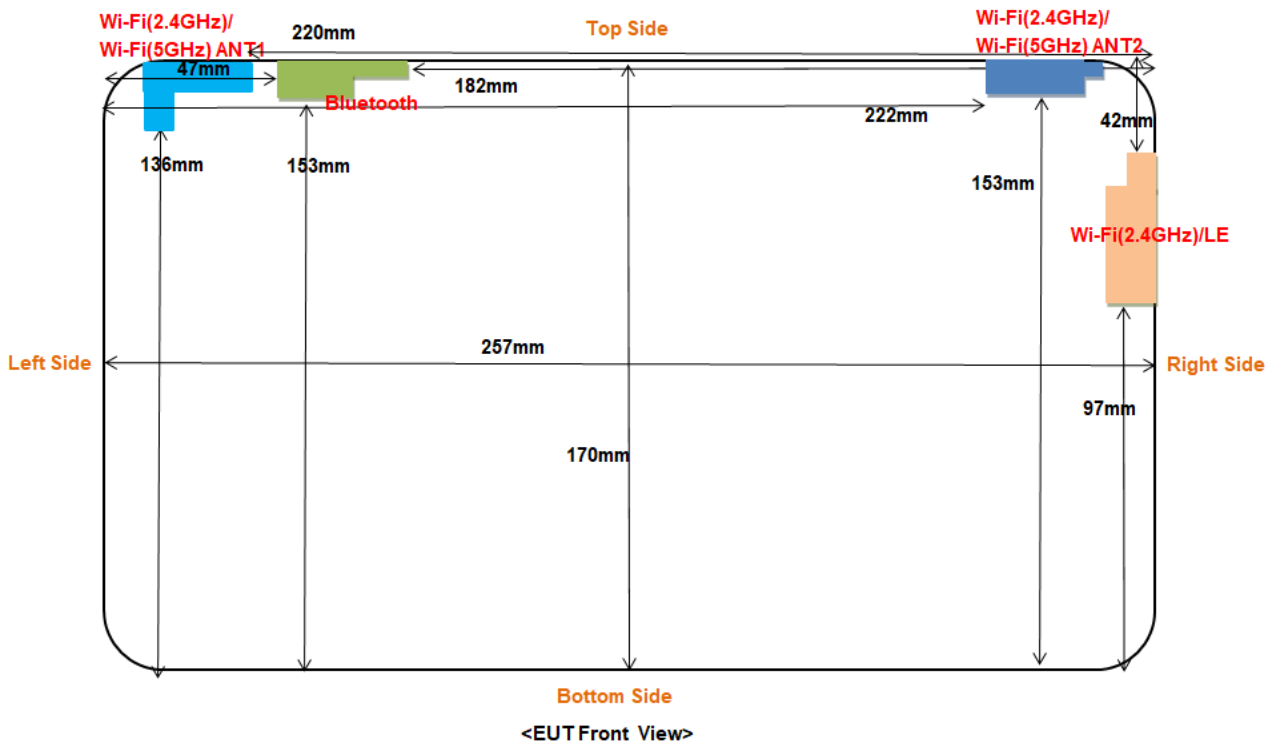


Fig 7.2 Block Diagram for EUT Antenna Position

Distance of EUT antenna-to-edge/surface(mm),						
Antennas	Back Edge	Front Edge	Left Edge	Right Edge	Top Edge	Bottom Edge
Wi-Fi(2.4GHz)/ Wi-Fi(5GHz) ANT1: RF module Q1-C4595	<25	<25	<25	220	<25	136
Bluetooth: RF module Q1-C4595	<25	<25	47	182	<25	153
Wi-Fi(2.4GHz)/ Wi-Fi(5GHz) ANT2: RF module Q1-C4595	<25	<25	222	<25	<25	153
Wi-Fi(2.4GHz)/LE: RF module ESP32-S3-WROOM-1U	<25	<25	238	<25	42	97

7.3 EUT Testing Position

Body mode SAR assessments are required for this device. This EUT was tested in different positions for different SAR test modes, more information as below:

Body SAR tests, Test distance: 0mm						
Antennas	Front Side	Back Side	Left Side	Right Side	Top Side	Bottom Side
Wi-Fi(2.4GHz)/ Wi-Fi(5GHz) ANT1: RF module Q1-C4595	/	Yes	Yes	No	Yes	No
Bluetooth: RF module Q1-C4595	/	Yes	No	No	Yes	No
Wi-Fi(2.4GHz)/ Wi-Fi(5GHz) ANT2: RF module Q1-C4595	/	Yes	No	Yes	Yes	No
Wi-Fi(2.4GHz)/LE: RF module ESP32-S3-WROOM-1U	/	Yes	No	Yes	No	No

Remark:

- Referring to KDB 616217 D04 v01r02, KDB 248227 D01 v02r02 and KDB 447498 D01 v06, this device is overall diagonal dimension(>20cm) tablet, tested in direct contact (no gap) with flat phantom.
- Referring to KDB 616217 D04 v01r02, Exposures from antennas through the front (top) surface of the display section of a full-size tablet, away from the edges, are generally limited to the user's hands. Exposures to hands for typical consumer transmitters used in tablets are not expected to exceed the extremity SAR limit; therefore, SAR evaluation for the front surface of tablet display screens are generally not necessary.
- Wi-Fi(2.4GHz)/Wi-Fi(5GHz) ANT1: RF module Q1-C4595

Reference No.: WTX25X07188392W008

Bluetooth: RF module Q1-C4595

Wi-Fi(2.4GHz)/ Wi-Fi(5GHz) ANT2: RF module Q1-C4595

Wi-Fi(2.4GHz)/ LE: RF module ESP32-S3-WROOM-1U

Please refer to Annex for SAR for the EUT test setup photos.

8. SAR Measurement Procedures

8.1 Measurement Procedures

The measurement procedures are as follows:

- (a) Use base station simulator (if applicable) or engineering software to transmit RF power continuously (continuous Tx) in the highest power channel.
- (b) Keep EUT to radiate maximum output power or 100% factor (if applicable)
- (c) Measure output power through RF cable and power meter.
- (d) Place the EUT in the positions as Annex D demonstrates.
- (e) Set scan area, grid size and other setting on the SATIMO software.
- (f) Measure SAR results for the highest power channel on each testing position.
- (g) Find out the largest SAR result on these testing positions of each band
- (h) Measure SAR results for other channels in worst SAR testing position if the SAR of highest power channel is larger than 0.8 W/kg

According to the test standard, the recommended procedure for assessing the peak spatial-average SAR value consists of the following steps:

- (a) Power reference measurement
- (b) Area scan
- (c) Zoom scan
- (d) Power drift measurement

8.2 Spatial Peak SAR Evaluation

The procedure for spatial peak SAR evaluation has been implemented according to the test standard. It can be conducted for 1g and 10g, as well as for user-specific masses. The SATIMO software includes all numerical procedures necessary to evaluate the spatial peak SAR value.

The base for the evaluation is a "cube" measurement. The measured volume must include the 1g and 10g cubes with the highest averaged SAR values. For that purpose, the center of the measured volume is aligned to the interpolated peak SAR value of a previously performed area scan.

The entire evaluation of the spatial peak values is performed within the post-processing engine. The system always gives the maximum values for the 1g and 10g cubes. The algorithm to find the cube with highest averaged SAR is divided into the following stages:

- (a) Extraction of the measured data (grid and values) from the Zoom Scan
- (b) Calculation of the SAR value at every measurement point based on all stored data
- (c) Generation of a high-resolution mesh within the measured volume
- (d) Interpolation of all measured values from the measurement grid to the high-resolution grid
- (e) Extrapolation of the entire 3D field distribution to the phantom surface over the distance from sensor to surface
- (f) Calculation of the averaged SAR within masses of 1g and 10g

8.3 Area & Zoom Scan Procedures

First Area Scan is used to locate the approximate location(s) of the local peak SAR value(s). The measurement grid within an Area Scan is defined by the grid extent, grid step size and grid offset. Next, in order to determine the EM field distribution in a three-dimensional spatial extension, Zoom Scan is required. The Zoom Scan measures 5x5x7 points with step size 8, 8 and 5 mm for 300 MHz to 3 GHz, and 8x8x8 points with step size 4, 4 and 2.5 mm for 3 GHz to 6 GHz. The Zoom Scan is performed around the highest E-field value to determine the averaged SAR-distribution over 10 g.

8.4 Volume Scan Procedures

The volume scan is used for assess overlapping SAR distributions for antennas transmitting in different frequency bands. It is equivalent to an oversized zoom scan used in standalone measurements. The measurement volume will be used to enclose all the simultaneous transmitting antennas. For antennas transmitting simultaneously in different frequency bands, the volume scan is measured separately in each frequency band. In order to sum correctly to compute the 1g aggregate SAR, the EUT remain in the same test position for all measurements and all volume scan use the same spatial resolution and grid spacing (step-size is 4, 4 and 2.5 mm). When all volume scan were completed, the software can combine and subsequently superpose these measurement data to calculating the multiband SAR.

8.5 SAR Averaged Methods

The local SAR inside the phantom is measured using small dipole sensing elements inside a probe body. The probe tip must not be in contact with the phantom surface in order to minimize measurements errors, but the highest local SAR will occur at the surface of the phantom.

An extrapolation is using to determinate this highest local SAR values. The extrapolation is based on a fourth-order least-square polynomial fit of measured data. The local SAR value is then extrapolated from the liquid surface with a 1mm step.

The measurements have to be performed over a limited time (due to the duration of the battery) so the step of measurement is high. It could vary between 5 and 8 mm. To obtain an accurate assessment of the maximum SAR averaged over 10g and 1 g requires a very fine resolution in the three dimensional scanned data array.

8.6 Power Drift Monitoring

All SAR testing is under the EUT install full charged battery and transmit maximum output power. In SATIMO measurement software, the power reference measurement and power drift measurement procedures are used for monitoring the power drift of EUT during SAR test. Both these procedures measure the field at a specified reference position before and after the SAR testing. The software will calculate the field difference in dB. If the power drift more than 5%, the SAR will be retested.

9. SAR Test Result

9.1 Conducted RF Output Power

WLAN(2.4GHz)-ANT1(RF module Q1-C4595)					
Test Mode	Data Rate	Channel	Frequency (MHz)	Conducted Power (dBm)	Tune-up power (dBm)
802.11b	1Mbps	CH 01	2412	16.67	17.0
		CH 06	2437	16.43	17.0
		CH 11	2462	16.48	17.0
802.11g	6Mbps	CH 01	2412	16.21	16.5
		CH 06	2437	16.09	16.5
		CH 11	2462	16.10	16.5
802.11n-HT20	MCS0	CH 01	2412	13.31	14.0
		CH 06	2437	13.26	14.0
		CH 11	2462	13.99	14.0
802.11n-HT40	MCS0	CH 03	2422	14.32	14.5
		CH 07	2442	14.15	14.5
		CH 11	2452	14.05	14.5
802.11ax-HE20	MCS0	CH 01	2412	14.41	15.0
		CH 06	2437	14.52	15.0
		CH 11	2462	14.15	15.0
802.11ax-HE40	MCS0	CH 03	2422	14.04	14.5
		CH 07	2442	14.30	14.5
		CH 11	2452	14.18	14.5

WLAN(5.2GHz)-ANT1(RF module Q1-C4595)				
Test Mode	Channel	Frequency (MHz)	Conducted Power (dBm)	Tune-up power (dBm)
802.11a	CH 36	5180	12.77	13.5
	CH 40	5200	13.06	13.5
	CH 48	5240	12.77	13.5
802.11n-HT20	CH 36	5180	12.62	13.5
	CH 40	5200	12.97	13.5
	CH 48	5240	13.11	13.5
802.11n-HT40	CH 38	5190	12.77	13.5
	CH 46	5230	13.04	13.5
802.11ac-VHT20	CH 36	5180	12.88	13.5
	CH 40	5200	13.10	13.5
	CH 48	5240	13.09	13.5
802.11ac-VHT40	CH 38	5190	12.80	13.5
	CH 46	5230	12.97	13.5
802.11ac-VHT80	CH 42	5210	9.95	10.5
802.11ax-HE20	CH 36	5180	9.88	10.5
	CH 40	5200	9.98	10.5
	CH 48	5240	10.08	10.5
802.11ax-HE40	CH 38	5190	9.81	10.5
	CH 46	5230	10.05	10.5
802.11ax-HE90	CH 42	5210	9.45	10.5

WLAN(5.3GHz) -ANT1(RF module Q1-C4595)				
Test Mode	Channel	Frequency (MHz)	Conducted Power (dBm)	Tune-up power (dBm)
802.11a	CH 52	5260	13.34	13.5
	CH 56	5280	13.02	13.5
	CH 64	5320	13.23	13.5
802.11n-HT20	CH 52	5260	13.37	13.5
	CH 56	5280	13.09	13.5
	CH 64	5320	13.16	13.5
802.11n-HT40	CH 54	5270	13.45	13.5
	CH 62	5310	13.36	13.5
802.11ac-VHT20	CH 52	5260	13.33	13.5
	CH 56	5280	13.10	13.5
	CH 64	5320	12.75	13.0
802.11ac-VHT40	CH 54	5270	13.20	13.5
	CH 62	5310	13.28	13.5
802.11ac-VHT80	CH 58	5290	9.88	10.0
802.11ax-HE20	CH 52	5260	16.76	17.0
	CH 56	5280	9.62	10.0
	CH 64	5320	10.05	10.5
802.11ax-HE40	CH 54	5270	9.92	10.5
	CH 62	5310	10.37	10.5
802.11ax-HE80	CH 58	5290	10.13	10.5

WLAN(5.6GHz) -ANT1(RF module Q1-C4595)				
Test Mode	Channel	Frequency (MHz)	Conducted Power (dBm)	Tune-up power (dBm)
802.11a	CH 100	5500	12.80	13.0
	CH 116	5580	14.31	14.5
	CH 140	5700	13.50	14.0
802.11n-HT20	CH 100	5500	12.84	13.0
	CH 116	5580	14.25	14.5
	CH 140	5700	13.54	14.0
802.11n-HT40	CH 102	5510	13.12	14.0
	CH 118	5590	13.16	14.0
	CH 134	5670	14.31	14.5
802.11ac-VHT20	CH 100	5500	12.88	13.0
	CH 116	5580	14.26	14.5
	CH 140	5700	13.60	14.0
802.11ac-VHT40	CH 102	5510	12.89	13.0
	CH 118	5590	13.20	13.5
	CH 134	5670	14.55	15.0
802.11ac-VHT80	CH 106	5530	9.59	10.0
	CH 122	5610	11.89	12.0
802.11ax-HE20	CH 100	5500	9.74	10.0
	CH 116	5580	11.81	12.0
	CH 140	5700	11.01	11.5
802.11ax-HE40	CH 102	5510	9.74	10.0
	CH 118	5590	10.01	10.5
	CH 134	5670	11.80	12.0
802.11ax-HE80	CH 106	5530	9.81	10.0
	CH 122	5610	11.64	12.0

WLAN(5.8GHz) -ANT1(RF module Q1-C4595)				
Test Mode	Channel	Frequency (MHz)	Conducted Power (dBm)	Tune-up power (dBm)
802.11a	CH 149	5745	12.52	13.0
	CH 157	5785	12.64	13.0
	CH 165	5825	12.60	13.0
802.11n-HT20	CH 149	5745	12.44	13.0
	CH 157	5785	12.63	13.0
	CH 165	5825	12.76	13.0
802.11n-HT40	CH 151	5755	12.53	13.0
	CH 159	5795	12.92	13.0
802.11ac-VHT20	CH 149	5745	12.60	13.0
	CH 157	5785	12.63	13.0
	CH 165	5825	12.75	13.0
802.11ac-VHT40	CH 151	5755	12.71	13.0
	CH 159	5795	12.92	13.0
802.11ac-VHT80	CH 155	5775	10.76	11.0
802.11ax-HE20	CH 149	5745	10.66	11.0
	CH 157	5785	10.85	11.0
	CH 165	5825	10.98	11.0
802.11ax-HE40	CH 151	5755	10.92	11.0
	CH 159	5795	10.75	11.0
802.11ax-HE80	CH 155	5775	10.92	11.0

WLAN(2.4GHz) –ANT2(RF module Q1-C4595)					
Test Mode	Data Rate	Channel	Frequency (MHz)	Conducted Power (dBm)	Tune-up power (dBm)
802.11b	1Mbps	CH 01	2412	14.02	14.5
		CH 06	2437	13.89	14.5
		CH 11	2462	13.91	14.5
802.11g	6Mbps	CH 01	2412	13.33	14.0
		CH 06	2437	13.48	14.0
		CH 11	2462	13.42	14.0
802.11n-HT20	MCS0	CH 01	2412	12.39	14.0
		CH 06	2437	12.65	14.0
		CH 11	2462	13.57	14.0
802.11n-HT40	MCS0	CH 03	2422	13.12	13.5
		CH 07	2442	13.24	13.5
		CH 11	2452	13.15	13.5
802.11ax-HE20	MCS0	CH 01	2412	13.67	14.0
		CH 06	2437	13.63	14.0
		CH 11	2462	13.63	14.0
802.11ax-HE40	MCS0	CH 03	2422	12.76	13.5
		CH 07	2442	13.21	13.5
		CH 11	2452	13.28	13.5

WLAN(5.2GHz) –ANT2(RF module Q1-C4595)				
Test Mode	Channel	Frequency (MHz)	Conducted Power (dBm)	Tune-up power (dBm)
802.11a	CH 36	5180	14.35	14.5
	CH 40	5200	14.31	14.5
	CH 48	5240	14.33	14.5
802.11n-HT20	CH 36	5180	11.55	12.0
	CH 40	5200	11.35	12.0
	CH 48	5240	11.16	12.0
802.11n-HT40	CH 38	5190	13.46	13.5
	CH 46	5230	13.03	13.5
802.11ac-VHT20	CH 36	5180	13.62	14.0
	CH 40	5200	13.41	14.0
	CH 48	5240	13.19	14.0
802.11ac-VHT40	CH 38	5190	12.13	12.5
	CH 46	5230	10.63	11.0
802.11ac-VHT80	CH 42	5210	9.21	10.5
802.11ax-HE20	CH 36	5180	10.82	11.5
	CH 40	5200	11.00	11.5
	CH 48	5240	11.04	11.5
802.11ax-HE40	CH 38	5190	10.79	11.5
	CH 46	5230	11.16	11.5
802.11ax-HE90	CH 42	5210	10.29	10.5

WLAN(5.3GHz) –ANT2(RF module Q1-C4595)				
Test Mode	Channel	Frequency (MHz)	Conducted Power (dBm)	Tune-up power (dBm)
802.11a	CH 52	5260	13.99	14.5
	CH 56	5280	13.87	14.5
	CH 64	5320	16.37	16.5
802.11n-HT20	CH 52	5260	13.16	13.5
	CH 56	5280	10.89	11.0
	CH 64	5320	11.11	11.5
802.11n-HT40	CH 54	5270	10.86	11.0
	CH 62	5310	10.76	11.0
802.11ac-VHT20	CH 52	5260	13.34	13.5
	CH 56	5280	12.90	13.0
	CH 64	5320	10.81	11.0
802.11ac-VHT40	CH 54	5270	11.00	11.5
	CH 62	5310	11.07	11.5
802.11ac-VHT80	CH 58	5290	9.65	10.0
802.11ax-HE20	CH 52	5260	10.81	11.0
	CH 56	5280	10.44	11.0
	CH 64	5320	11.06	11.5
802.11ax-HE40	CH 54	5270	10.9	11.0
	CH 62	5310	11.08	11.5
802.11ax-HE80	CH 58	5290	10.56	11.0

WLAN(5.6GHz) –ANT2(RF module Q1-C4595)				
Test Mode	Channel	Frequency (MHz)	Conducted Power (dBm)	Tune-up power (dBm)
802.11a	CH 100	5500	13.86	14.0
	CH 116	5580	16.30	16.5
	CH 140	5700	15.31	15.5
802.11n-HT20	CH 100	5500	12.84	13.0
	CH 116	5580	15.24	15.5
	CH 140	5700	12.29	12.5
802.11n-HT40	CH 102	5510	12.37	12.5
	CH 118	5590	12.92	13.0
	CH 134	5670	12.87	13.0
802.11ac-VHT20	CH 100	5500	10.69	11.0
	CH 116	5580	12.98	13.5
	CH 140	5700	14.25	14.5
802.11ac-VHT40	CH 102	5510	10.57	11.0
	CH 118	5590	13.09	13.5
	CH 134	5670	12.78	13.0
802.11ac-VHT80	CH 106	5530	10.75	11.0
	CH 122	5610	10.93	11.0
802.11ax-HE20	CH 100	5500	10.28	11.0
	CH 116	5580	11.84	12.0
	CH 140	5700	11.17	11.5
802.11ax-HE40	CH 102	5510	10.52	11.0
	CH 118	5590	10.82	11.0
	CH 134	5670	12.20	12.5
802.11ax-HE80	CH 106	5530	10.49	11.0
	CH 122	5610	12.00	12.5

WLAN(5.8GHz) –ANT2(RF module Q1-C4595)				
Test Mode	Channel	Frequency (MHz)	Conducted Power (dBm)	Tune-up power (dBm)
802.11a	CH 149	5745	14.79	15.0
	CH 157	5785	14.88	15.0
	CH 165	5825	14.95	15.0
802.11n-HT20	CH 149	5745	11.96	12.0
	CH 157	5785	13.94	14.0
	CH 165	5825	13.86	14.0
802.11n-HT40	CH 151	5755	13.71	14.0
	CH 159	5795	13.67	14.0
802.11ac-VHT20	CH 149	5745	13.57	14.0
	CH 157	5785	11.67	12.0
	CH 165	5825	11.80	12.0
802.11ac-VHT40	CH 151	5755	11.49	12.0
	CH 159	5795	13.59	14.0
802.11ac-VHT80	CH 155	5775	10.04	11.0
802.11ax-HE20	CH 149	5745	10.15	11.0
	CH 157	5785	10.18	11.0
	CH 165	5825	10.20	11.0
802.11ax-HE40	CH 151	5755	10.34	11.0
	CH 159	5795	10.12	11.0
802.11ax-HE80	CH 155	5775	10.08	11.0

WLAN(2.4GHz) (RF module ESP32-S3-WROOM-1U)					
Test Mode	Data Rate	Channel	Frequency (MHz)	Conducted Power (dBm)	Tune-up power (dBm)
802.11b	1Mbps	CH 01	2412	14.10	14.5
		CH 06	2437	14.30	14.5
		CH 11	2462	14.41	14.5
802.11g	6Mbps	CH 01	2412	12.20	12.5
		CH 06	2437	12.29	12.5
		CH 11	2462	12.42	12.5
802.11n-HT20	MCS0	CH 01	2412	10.84	12.0
		CH 06	2437	10.81	12.0
		CH 11	2462	11.54	12.0
802.11n-HT40	MCS0	CH 03	2422	11.62	12.0
		CH 07	2442	11.31	12.0
		CH 11	2452	11.52	12.0

Remark:

1. Per KDB 248227 D01 v02r02, for 802.11b DSSS SAR measurements, DSSS SAR procedure applies to fixed exposure test position and initial test position procedure applies to multiple exposure test positions.
2. Per KDB 248227 D01 v02r02, for 802.11b DSSS SAR measurements, when the reported SAR of the highest measured maximum output power channel (see 3.1) for the exposure configuration is ≤ 0.8 W/kg, no further SAR testing is required for 802.11b DSSS in that exposure configuration. When the reported SAR is > 0.8 W/kg, SAR is required for that exposure configuration using the next highest measured output power channel. When any reported SAR is > 1.2 W/kg, SAR is required for the third channel; i.e., all channels require testing.
3. For OFDM modes (802.11g/n), SAR is not required when the highest reported SAR for DSSS is adjusted by the ratio of OFDM to DSSS specified maximum output power and it is ≤ 1.2 W/kg.

Bluetooth (RF module Q1-C4595)				
Test Mode	Data Rate	Frequency (MHz)	Conducted Power (dBm)	Tune-up power (dBm)
GFSK	1Mbps	2402	5.41	6.0
		2441	4.85	6.0
		2480	5.23	6.0
$\pi/4$ DQPSK	2Mbps	2402	7.49	7.5
		2441	6.46	7.0
		2480	6.24	7.0
8DPSK	3Mbps	240200	8.02	8.5
		2441	6.97	7.5
		2480	6.77	7.5

Bluetooth (RF module Q1-C4595)					
Test Mode	Data Rate	Channel	Frequency (MHz)	Conducted Power (dBm)	Tune-up power (dBm)
LE	1Mbps	CH 00	2402	5.92	6.0
		CH 19	2440	5.26	6.0
		CH 39	2480	5.72	6.0
	2Mbps	CH 01	2404	5.18	6.0
		CH 19	2440	5.22	6.0
		CH 38	2478	4.92	6.0

Bluetooth(RF module ESP32-S3-WROOM-1U)					
Test Mode	Data Rate	Channel	Frequency (MHz)	Conducted Power (dBm)	Tune-up power (dBm)
LE	1Mbps	CH 00	2402	8.65	10.0
		CH 19	2440	8.98	10.0
		CH 39	2480	9.22	10.0
	2Mbps	CH 00	2402	8.83	10.0
		CH 19	2440	9.48	10.0
		CH 39	2480	9.72	10.0

9.2 Test Results for Standalone SAR Test

Body SAR

WLAN 2.4GHz– Body SAR Test-ANT1(0mm)									
Plot No.	Mode	Test Position	Frequency		Output Power (dBm)	Rated Limit (dBm)	Scaling Factor	SAR1g (W/kg)	Scaled SAR1g (W/kg)
			CH.	MHz					
1.	802.11b	Back Face	01	2412	16.67	17.0	1.079	0.572	0.617
	802.11b	Left Side	01	2412	16.67	17.0	1.079	0.403	0.435
	802.11b	Top Side	01	2412	16.67	17.0	1.079	0.331	0.357
	802.11b	Back Face	06	2437	16.43	17.0	1.140	0.527	0.601
	802.11b	Back Face	11	2462	16.48	17.0	1.127	0.466	0.525

WLAN 5.2GHz– Body SAR Test-ANT1(0mm)									
Plot No.	Mode	Test Position	Frequency		Output Power (dBm)	Rated Limit (dBm)	Scaling Factor	SAR1g (W/kg)	Scaled SAR1g (W/kg)
			CH.	MHz					
2.	802.11n-HT20	Back Face	48	5240	13.11	13.5	1.094	0.571	0.625
	802.11n-HT20	Left Side	48	5240	13.11	13.5	1.094	0.125	0.137
	802.11n-HT20	Top Side	48	5240	13.11	13.5	1.094	0.347	0.380
	802.11n-HT20	Back Face	36	5180	12.62	13.5	1.225	0.502	0.615
	802.11n-HT20	Back Face	40	5200	12.97	13.5	1.130	0.541	0.611

WLAN 5.3GHz– Body SAR Test-ANT1(0mm)									
Plot No.	Mode	Test Position	Frequency		Output Power (dBm)	Rated Limit (dBm)	Scaling Factor	SAR1g (W/kg)	Scaled SAR1g (W/kg)
			CH.	MHz					
3.	802.11ax-HE20	Back Face	52	5260	16.76	17.0	1.057	0.568	0.600
	802.11ax-HE20	Left Side	52	5260	16.76	17.0	1.057	0.109	0.115
	802.11ax-HE20	Top Side	52	5260	16.76	17.0	1.057	0.338	0.357
	802.11ax-HE20	Back Face	56	5280	9.62	10.0	1.091	0.506	0.552
	802.11ax-HE20	Back Face	64	5320	10.05	10.5	1.109	0.527	0.585

WLAN 5.6GHz– Body SAR Test-ANT1(0mm)									
Plot No.	Mode	Test Position	Frequency		Output Power (dBm)	Rated Limit (dBm)	Scaling Factor	SAR1g (W/kg)	Scaled SAR1g (W/kg)
			CH.	MHz					
4.	802.11ac-VHT40	Back Face	134	5670	14.55	15.0	1.109	0.478	0.530
	802.11ac-VHT40	Left Side	134	5670	14.55	15.0	1.109	0.127	0.141
	802.11ac-VHT40	Top Side	134	5670	14.55	15.0	1.109	0.319	0.354
	802.11ac-VHT40	Back Face	102	5510	12.89	13.0	1.026	0.514	0.527
	802.11ac-VHT40	Back Face	118	5590	13.20	13.5	1.072	0.490	0.525

WLAN 5.8GHz– Body SAR Test-ANT1(0mm)									
Plot No.	Mode	Test Position	Frequency		Output Power (dBm)	Rated Limit (dBm)	Scaling Factor	SAR1g (W/kg)	Scaled SAR1g (W/kg)
			CH.	MHz					
	802.11n-HT40	Back Face	159	5795	12.92	13.0	1.019	0.544	0.554
	802.11n-HT40	Left Side	159	5795	12.92	13.0	1.019	0.129	0.131
	802.11n-HT40	Top Side	159	5795	12.92	13.0	1.019	0.329	0.335
	802.11n-HT40	Back Face	159	5795	12.92	13.0	1.019	0.534	0.544
5.	802.11n-HT40	Back Face	151	5755	12.53	13.0	1.114	0.533	0.594

Bluetooth– Body SAR Test (0mm) (RF module Q1-C4595)									
Plot No.	Mode	Test Position	Frequency		Output Power (dBm)	Rated Limit (dBm)	Scaling Factor	SAR1g (W/kg)	Scaled SAR1g (W/kg)
			CH.	MHz					
6.	8DPSK	Back Face	00	2402	8.02	8.5	1.117	0.129	0.144
	8DPSK	Top Side	00	2402	8.02	8.5	1.117	0.085	0.095
	8DPSK	Back Face	39	2441	6.97	7.5	1.130	0.115	0.130
	8DPSK	Back Face	78	2480	6.77	7.5	1.183	0.103	0.122

WLAN 2.4GHz– Body SAR Test-ANT2(0mm)									
Plot No.	Mode	Test Position	Frequency		Output Power (dBm)	Rated Limit (dBm)	Scaling Factor	SAR1g (W/kg)	Scaled SAR1g (W/kg)
			CH.	MHz					
7.	802.11b	Back Face	01	2412	14.02	14.5	1.117	0.484	0.541
	802.11b	Right Side	01	2412	14.02	14.5	1.117	0.383	0.428
	802.11b	Top Side	01	2412	14.02	14.5	1.117	0.282	0.315
	802.11b	Back Face	06	2437	13.89	14.5	1.151	0.459	0.528
	802.11b	Back Face	11	2462	13.91	14.5	1.146	0.464	0.532

WLAN 5.2GHz– Body SAR Test-ANT2(0mm)									
Plot No.	Mode	Test Position	Frequency		Output Power (dBm)	Rated Limit (dBm)	Scaling Factor	SAR1g (W/kg)	Scaled SAR1g (W/kg)
			CH.	MHz					
8.	802.11a	Back Face	36	5180	14.35	14.5	1.035	0.472	0.489
	802.11a	Right Side	36	5180	14.35	14.5	1.035	0.375	0.388
	802.11a	Top Side	36	5180	14.35	14.5	1.035	0.267	0.276
	802.11a	Back Face	40	5200	14.31	14.5	1.045	0.458	0.478
	802.11a	Back Face	48	5240	14.33	14.5	1.040	0.421	0.438

WLAN 5.3GHz– Body SAR Test-ANT2(0mm)									
Plot No.	Mode	Test Position	Frequency		Output Power (dBm)	Rated Limit (dBm)	Scaling Factor	SAR1g (W/kg)	Scaled SAR1g (W/kg)
			CH.	MHz					
9.	802.11a	Back Face	64	5320	16.37	16.5	1.030	0.540	0.556
	802.11a	Right Side	64	5320	16.37	16.5	1.030	0.398	0.410
	802.11a	Top Side	64	5320	16.37	16.5	1.030	0.295	0.304
	802.11a	Back Face	52	5260	13.99	14.5	1.125	0.492	0.553
	802.11a	Back Face	56	5280	13.87	14.5	1.156	0.473	0.547

WLAN 5.6GHz– Body SAR Test-ANT2(0mm)									
Plot No.	Mode	Test Position	Frequency		Output Power (dBm)	Rated Limit (dBm)	Scaling Factor	SAR1g (W/kg)	Scaled SAR1g (W/kg)
			CH.	MHz					
10.	802.11a	Back Face	116	5580	16.30	16.5	1.047	0.494	0.517
	802.11a	Right Side	116	5580	16.30	16.5	1.047	0.374	0.392
	802.11a	Top Side	116	5580	16.30	16.5	1.047	0.265	0.277
	802.11a	Back Face	100	5500	13.86	14.0	1.033	0.437	0.451
	802.11a	Back Face	140	5700	15.31	15.5	1.045	0.470	0.491

WLAN 5.8GHz– Body SAR Test-ANT2(0mm)									
Plot No.	Mode	Test Position	Frequency		Output Power (dBm)	Rated Limit (dBm)	Scaling Factor	SAR1g (W/kg)	Scaled SAR1g (W/kg)
			CH.	MHz					
11.	802.11a	Back Face	165	5825	14.95	15.0	1.012	0.475	0.481
	802.11a	Right Side	165	5825	14.95	15.0	1.012	0.354	0.358
	802.11a	Top Side	165	5825	14.95	15.0	1.012	0.251	0.254
	802.11a	Back Face	149	5745	14.79	15.0	1.050	0.452	0.474
	802.11a	Back Face	157	5785	14.88	15.0	1.028	0.448	0.461

WLAN 2.4GHz– Body SAR Test (0mm)(ESP32-S3-WROOM-1U)									
Plot No.	Mode	Test Position	Frequency		Output Power (dBm)	Rated Limit (dBm)	Scaling Factor	SAR1g (W/kg)	Scaled SAR1g (W/kg)
			CH.	MHz					
	802.11b	Back Face	11	2462	14.41	14.5	1.021	0.250	0.255
	802.11b	Right Side	11	2462	14.41	14.5	1.021	0.492	0.502
	802.11b	Right Side	01	2412	14.10	14.5	1.096	0.544	0.596
12.	802.11b	Right Side	06	2437	14.30	14.5	1.047	0.617	0.646

Bluetooth– Body SAR Test (0mm) (ESP32-S3-WROOM-1U)									
Plot No.	Mode	Test Position	Frequency		Output Power (dBm)	Rated Limit (dBm)	Scaling Factor	SAR1g (W/kg)	Scaled SAR1g (W/kg)
			CH.	MHz					
	LE-2Mbps	Back Face	39	2480	9.72	10.0	1.067	0.107	0.114
	LE-2Mbps	Right Side	39	2480	9.72	10.0	1.067	0.135	0.144
	LE-2Mbps	Right Side	00	2402	8.83	10.0	1.309	0.122	0.160
13.	LE-2Mbps	Right Side	19	2440	9.48	10.0	1.127	0.163	0.184

Remark:

- 1) Per KDB 447498 D01 v06, if the highest output channel SAR for each exposure position ≤ 0.8 W/kg other channels SAR tests are not necessary.
- 2) Repeated measurement is not required when the original highest measured SAR is < 0.80 W/kg; steps 2) through 4) do not apply.
- 3) When the original highest measured SAR is ≥ 0.80 W/kg, repeat that measurement once.
- 4) Perform a second repeated measurement only if the ratio of largest to smallest SAR for the original and first repeated measurements is > 1.20 or when the original or repeated measurement is ≥ 1.45 W/kg ($\sim 10\%$ from the 1-g SAR limit).
- 5) Perform a third repeated measurement only if the original, first or second repeated measurement is ≥ 1.5 W/kg and the ratio of largest to smallest SAR for the original, first and second repeated measurements is > 1.20 .

9.3 Simultaneous Multi-band Transmission SAR Analysis

List of Mode for Simultaneous Multi-band Transmission

No.	Configurations	Body SAR
1	WLAN(Data)ANT1(RF module Q1-C4595)+Bluetooth(RF module Q1-C4595) (Data) + WLAN(Data)ANT2(RF module Q1-C4595)+ WLAN(RF module ESP32-S3-WROOM-1U)(Data)	Yes
2	WLAN(Data)ANT1(RF module Q1-C4595)+Bluetooth(RF module Q1-C4595) (Data) + WLAN(Data)ANT2(RF module Q1-C4595)+ Bluetooth(RF module ESP32-S3-WROOM-1U)(Data)	Yes

Remark:

1. WLAN ANT1 (RF module Q1-C4595), Bluetooth(RF module Q1-C4595), WLAN ANT2(RF module Q1-C4595) and WLAN(RF module ESP32-S3-WROOM-1U) can transmit at the same time.
2. According to the KDB 447498 D01 v06, when standalone SAR test exclusion applies to an antenna that transmits simultaneously with other antennas, the standalone SAR must be estimated according to following to determine simultaneous transmission SAR test exclusion:
 $(\text{max. power of channel, including tune-up tolerance, mW})/(\text{min. test separation distance, mm}) \cdot [\sqrt{f(\text{GHz})}/x]$
W/kg for test separation distances ≤ 50 mm;
where $x = 7.5$ for 1-g SAR, and $x = 18.75$ for 10-g SAR.
3. The maximum SAR summation is calculated based on the same configuration and test position.

Body SAR

	WLAN (2.4GHz/5GHz) ANT1 (RF module Q1-C4595)	Bluetooth (RF module Q1-C4595)	WLAN (2.4GHz/5GHz) ANT2 (RF module Q1-C4595)	WLAN (2.4GHz) (RF module ESP32-S3-WROOM-1U)	Summed SAR (W/kg)
Position	Scaled SAR (W/kg)	Scaled SAR (W/kg)	Scaled SAR (W/kg)	Scaled SAR (W/kg)	
Back	0.625	0.144	0.556	0.255	1.580
Front	--	--	--	--	--
Right side	--	--	0.428	0.646	1.074
Left side	0.435	--	--	--	0.435
Top side	0.380	0.095	0.315	--	0.790
Bottom side	--	--	--	--	--

	WLAN (2.4GHz/5GHz) ANT1(11n) (RF module Q1-C4595)	Bluetooth (RF module Q1-C4595)	WLAN (2.4GHz/5GHz) ANT2(11n) (RF module Q1-C4595)	WLAN (2.4GHz) (RF module ESP32-S3-WROOM-1U)	Summed SAR (W/kg)
Position	Scaled SAR (W/kg)	Scaled SAR (W/kg)	Scaled SAR (W/kg)	Scaled SAR (W/kg)	
Back	0.625	0.144	0.556	0.255	1.580
Front	--	--	--	--	--
Right side	--	--	0.428	0.646	1.074
Left side	0.435	--	--	--	0.435
Top side	0.380	0.095	0.315	--	0.790
Bottom side	--	--	--	--	--

	WLAN (2.4GHz/5GHz) ANT1 (RF module Q1-C4595)	Bluetooth (RF module Q1-C4595)	WLAN (2.4GHz/5GHz) ANT2 (RF module Q1-C4595)	Bluetooth (RF module ESP32-S3-WROOM-1U)	Summed SAR (W/kg)
Position	Scaled SAR (W/kg)	Scaled SAR (W/kg)	Scaled SAR (W/kg)	Scaled SAR (W/kg)	

Back	0.625	0.144	0.556	0.114	1.439
Front	--	--	--	--	--
Right side	0.435	--	0.428	0.184	0.612
Left side	--	--	--	--	0.435
Top side	0.380	0.095	0.315	--	0.790
Bottom side	--	--	--	--	--

10. Measurement Uncertainty

10.1 Uncertainty for SAR Test

Input quantity X_i (source of uncertainty)	Ref.	Prob. Dist PDF _i	Unc. $a(x_i)$	Div. q_i	$u(x_i) = a(x_i)/q_i$	c_i (1 g; 10 g)	$u(y) = c_i \cdot u(x_i)$	v_i or v_{eff}
Measurement System errors								
Probe calibration	8.4.1.1	N	7.00	2	3.5	1	3.5	∞
Probe calibration drift	8.4.1.2	R	0	$\sqrt{3}$	0	1	0	∞
Probe linearity and detection limit	8.4.1.3	R	5.00	$\sqrt{3}$	2.89	1	2.89	∞
Broadband signal	8.4.1.4	R	0	$\sqrt{3}$	0	1	0	∞
Probe isotropy	8.4.1.5	R	2.50	$\sqrt{3}$	1.44	1	1.44	∞
Other probe and data acquisition errors	8.4.1.6	N	0.02	1	0.02	1	0.02	∞
RF ambient and noise	8.4.1.7	N	0	1	0	1	0	∞
Probe positioning errors	8.4.1.8	N	1.40	1	1.40	$2/\sqrt{TM}$	0.70	
Data processing errors	8.4.1.9	N	0.05	1	0.05	1	0.05	∞
Phantom and device (DUT or validation antenna) errors								
Measurement of phantom conductivity(σ)	8.4.2.1	N	4.00	1	4.00	c_ϵ, c_σ	4.00	∞
Temperature effects (medium)	8.4.2.2	R	2.50	$\sqrt{3}$	1.44	c_ϵ, c_σ	1.44	∞
Shell permittivity	8.4.2.3	R	5.00	$\sqrt{3}$	2.88	See 8.4.2.3	2.88	∞
Distance between the radiating element of the DUT and the phantom medium	8.4.2.4	N	0.03	1	0.03	2	0.02	∞
Repeatability of positioning the DUT or source against the phantom	8.4.2.5	N	0.05	1	0.05	1	0.05	5
Device holder effects	8.4.2.6	N	5.00	1	5.00	1	5.00	
Effect of operating mode on probe sensitivity	8.4.2.7	R	0	$\sqrt{3}$	0	1	0	∞
Time-average SAR	8.4.2.8	R	0	$\sqrt{3}$	0	1	0	∞
Variation in SAR due to drift in output of DUT	8.4.2.9	N	5.00	1	5.00	1	5.00	
Validation antenna uncertainty (validation measurement only)	8.4.2.10	N	0	1	0	1	0	
Uncertainty in accepted power	8.4.2.11	N	0	1	0	1	0	

(validation measurement only)								
Corrections to the SAR result								
Phantom deviation from target (ϵ', σ)	8.4.3.1	N	0.05	1	0.05	1	0.05	
SAR scaling	8.4.3.2	R	2.00	$\sqrt{3}$	1.15	1	1.15	
Combined Standard Uncertainty		RSS			10.11		10.11	$V_{\text{eff}} =$
Expanded uncertainty, U		K=2			20.23		20.23	

Annex A. Plots of System Performance Check

MEASUREMENT 1

Type: Validation measurement (Fast, 75.00 %)

Date of measurement: 2025-07-18

Measurement duration: 12 minutes 21 seconds

E-field Probe: SSE2 - 0725-EPGO-446; ConvF: 1.45; Calibrated: 2025-02-12

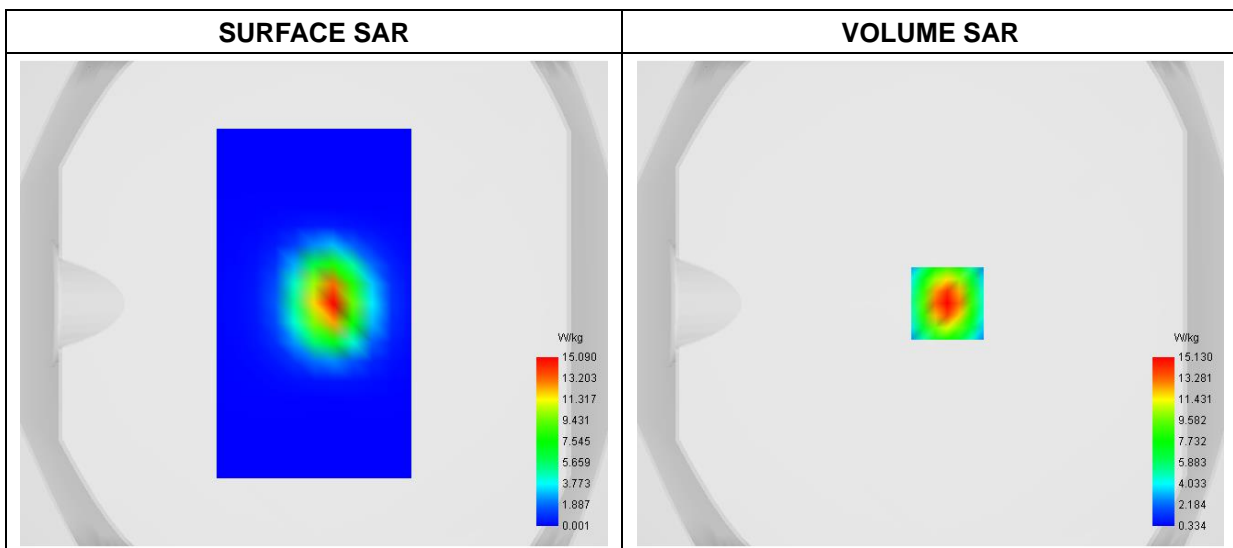
A. Experimental conditions

Area Scan	dx=8mm dy=8mm
Zoom Scan	dx=5mm dy=5mm dz=4mm
Phantom	Validation plane
Device Position	Dipole
Band	CW2450
Signal	CW (Crest factor: 1.0)

B. SAR Measurement Results

Frequency (MHz)	2450.000000
Relative Permittivity (real part)	37.452289
Conductivity (S/m)	4.734828
Power Variation (%)	1.475200
Ambient Temperature	22.4
Liquid Temperature	22.4

C. SAR Surface and Volume



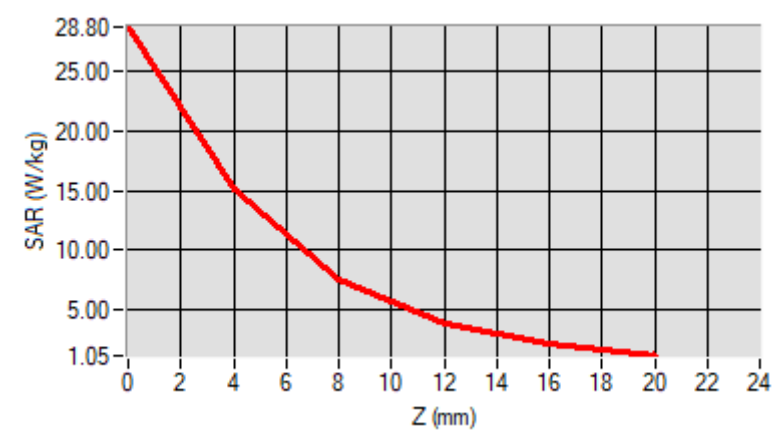
Maximum location: X=7.00, Y=0.00

D. SAR 1g & 10g

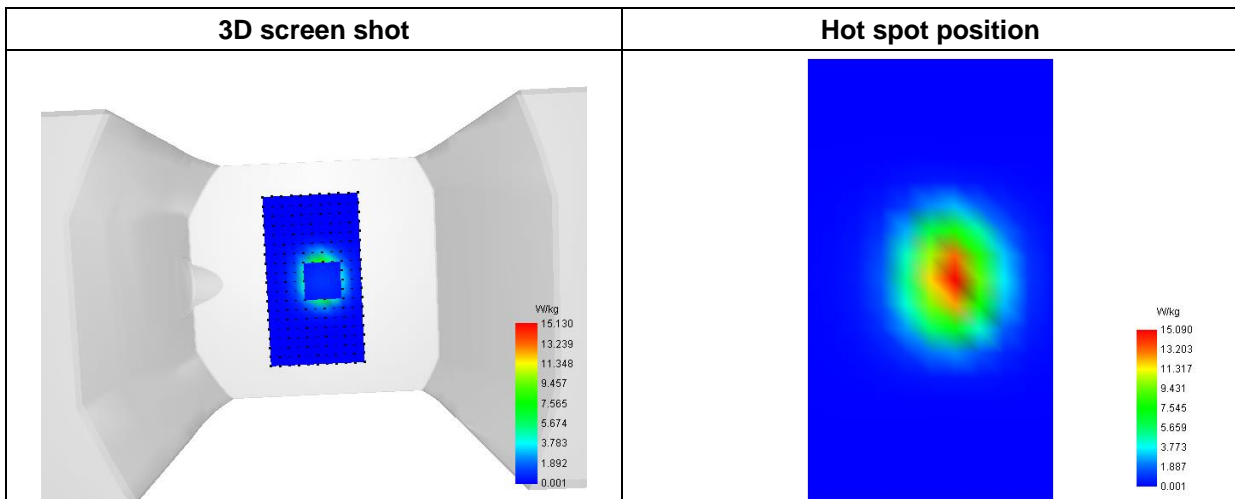
SAR 10g (W/Kg)	6.149024
SAR 1g (W/Kg)	13.746586

E. Z Axis Scan

Z (mm)	0.00	4.00	8.00	12.00	16.00
SAR (W/Kg)	28.7959	15.1301	7.5430	3.7436	1.9810



F. 3D Image



MEASUREMENT 2

Type: Validation measurement (Fast, 75.00 %)

Date of measurement: 2025-08-04

Measurement duration: 12 minutes 21 seconds

E-field Probe: SSE2 - 0725-EPGO-446; ConvF: 1.56; Calibrated: 2025-02-12

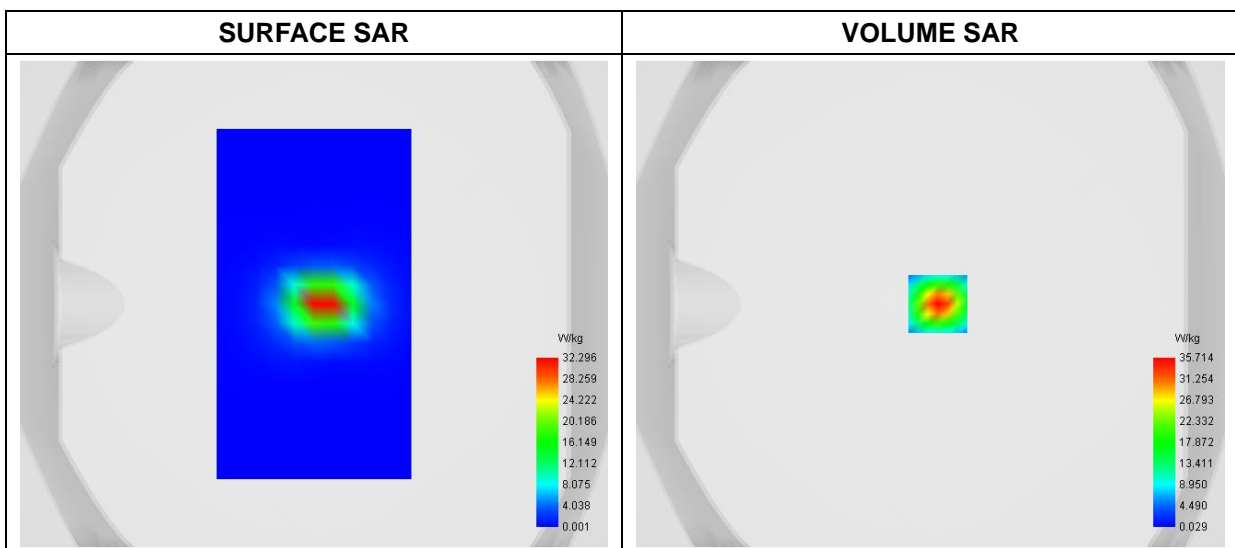
A. Experimental conditions

Area Scan	dx=8mm dy=8mm
Zoom Scan	dx=4mm dy=4mm dz=2mm
Phantom	Validation plane
Device Position	Dipole
Band	CW5200
Signal	CW (Crest factor: 1.0)

B. SAR Measurement Results

Frequency (MHz)	5200.000000
Relative Permittivity (real part)	37.453547
Conductivity (S/m)	4.734561
Power Variation (%)	2.485100
Ambient Temperature	22.4
Liquid Temperature	22.4

C. SAR Surface and Volume



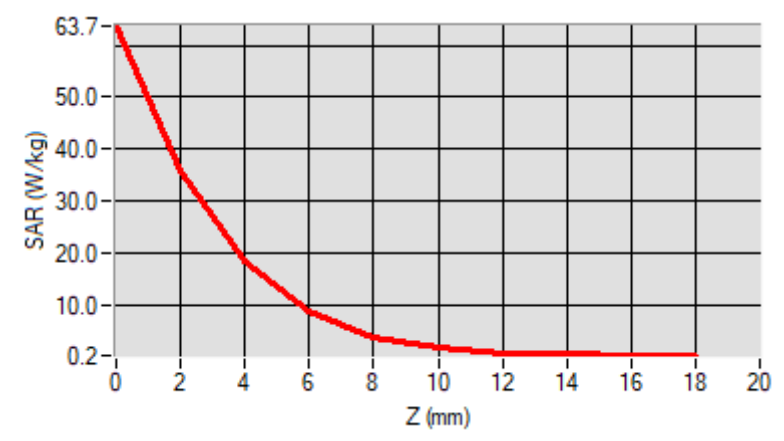
Maximum location: X=3.00, Y=0.00

D. SAR 1g & 10g

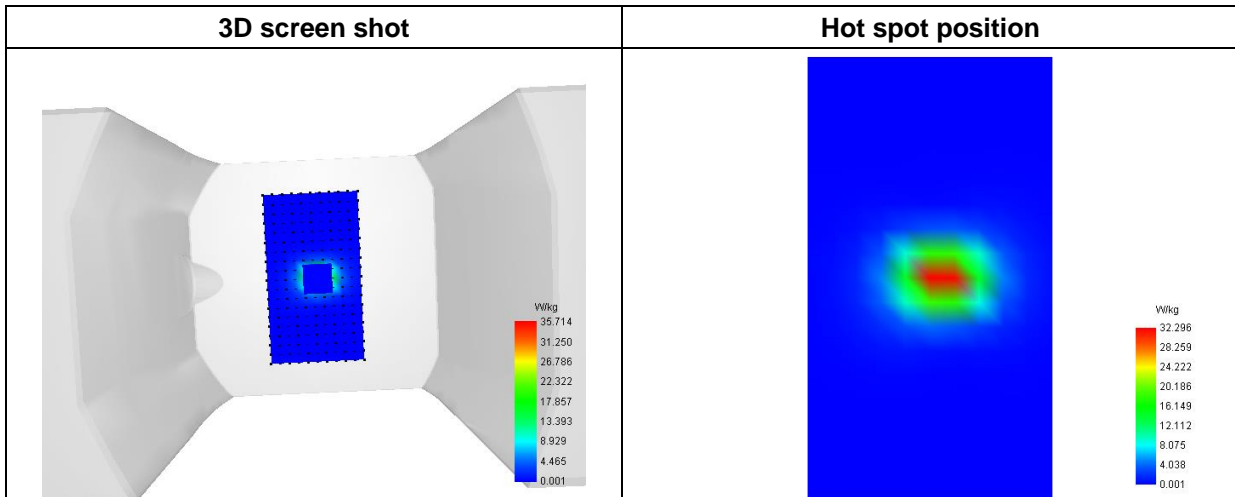
SAR 10g (W/Kg)	5.214336
SAR 1g (W/Kg)	18.566732

E. Z Axis Scan

Z (mm)	0.00	2.00	4.00	6.00	8.00	10.00	12.00	14.00	16.00
SAR (W/Kg)	63.6940	35.7143	18.3619	8.6368	3.8326	1.6405	0.7180	0.3557	0.2183



F. 3D Image



MEASUREMENT 3

Type: Validation measurement (Fast, 75.00 %)

Date of measurement: 2025-08-12

Measurement duration: 12 minutes 21 seconds

E-field Probe: SSE2 - 0725-EPGO-446; ConvF: 1.54; Calibrated: 2025-02-12

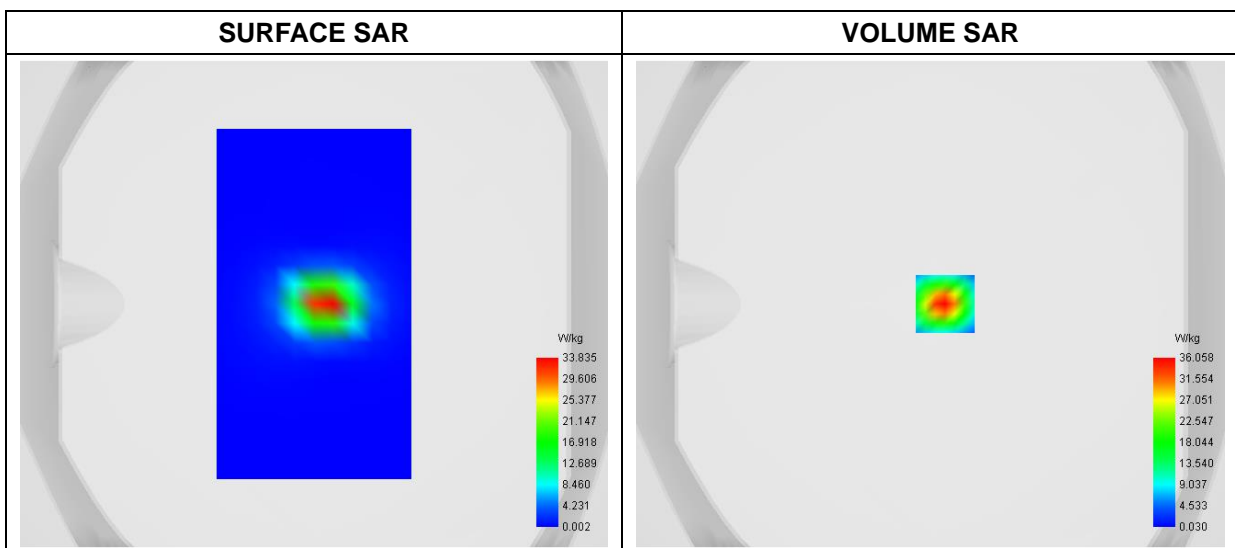
A. Experimental conditions

Area Scan	dx=8mm dy=8mm
Zoom Scan	dx=4mm dy=4mm dz=2mm
Phantom	Validation plane
Device Position	Dipole
Band	CW5400
Signal	CW (Crest factor: 1.0)

B. SAR Measurement Results

Frequency (MHz)	5400.000000
Relative Permittivity (real part)	37.013765
Conductivity (S/m)	4.894247
Power Variation (%)	1.37510
Ambient Temperature	22.4
Liquid Temperature	22.4

C. SAR Surface and Volume



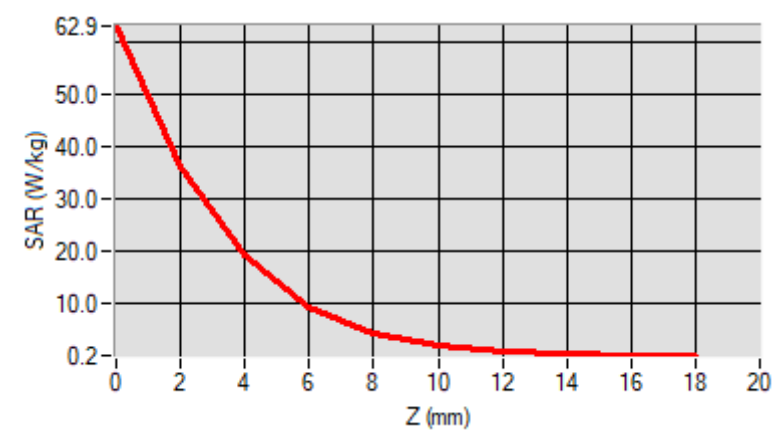
Maximum location: X=6.00, Y=0.00

D. SAR 1g & 10g

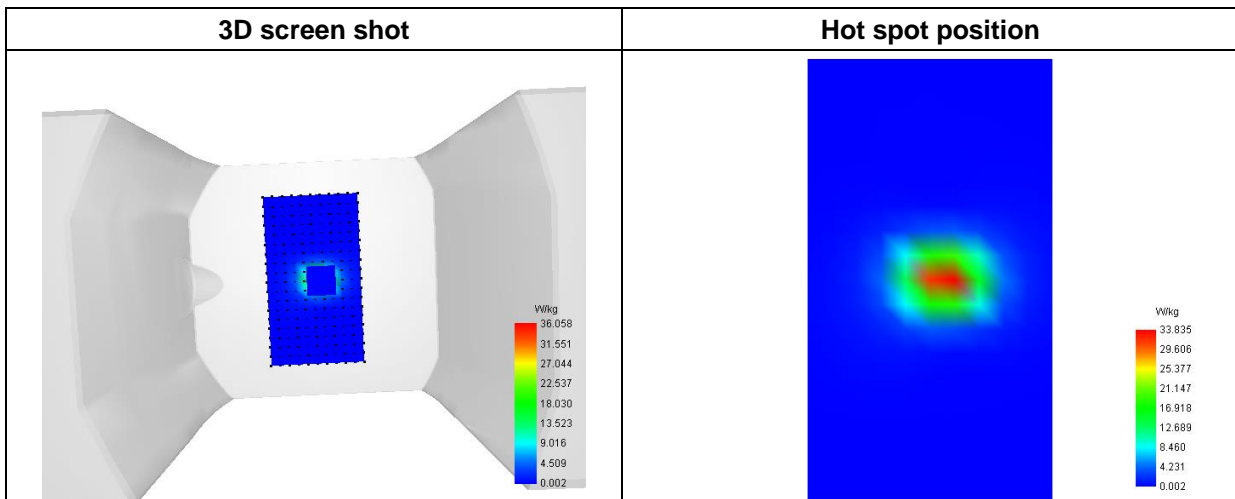
SAR 10g (W/Kg)	5.463589
SAR 1g (W/Kg)	18.979345

E. Z Axis Scan

Z (mm)	0.00	2.00	4.00	6.00	8.00	10.00	12.00	14.00	16.00
SAR (W/Kg)	62.9456	36.0579	19.1617	9.4529	4.4747	2.0809	0.9976	0.5283	0.3243



F. 3D Image



MEASUREMENT 4

Type: Validation measurement (Fast, 75.00 %)

Date of measurement: 2025-08-14

Measurement duration: 12 minutes 21 seconds

E-field Probe: SSE2 - 0725-EPGO-446; ConvF: 1.57; Calibrated: 2025-02-12

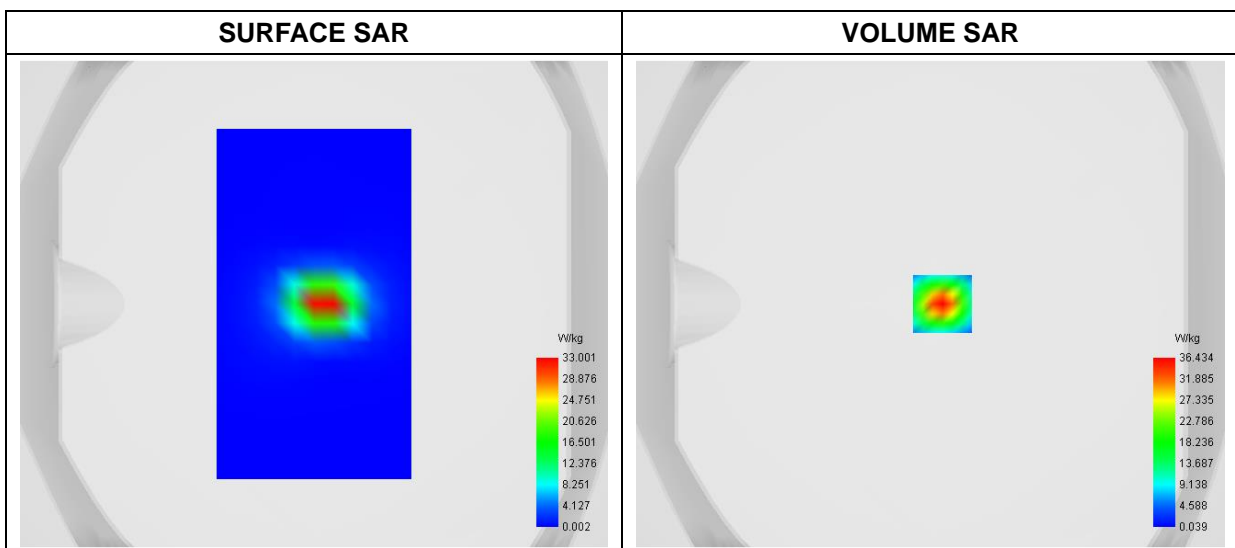
A. Experimental conditions

Area Scan	dx=8mm dy=8mm
Zoom Scan	dx=4mm dy=4mm dz=2mm
Phantom	Validation plane
Device Position	Dipole
Band	CW5600
Signal	CW (Crest factor: 1.0)

B. SAR Measurement Results

Frequency (MHz)	5600.000000
Relative Permittivity (real part)	36.654172
Conductivity (S/m)	5.094258
Power Variation (%)	1.477300
Ambient Temperature	22.5
Liquid Temperature	22.5

C. SAR Surface and Volume



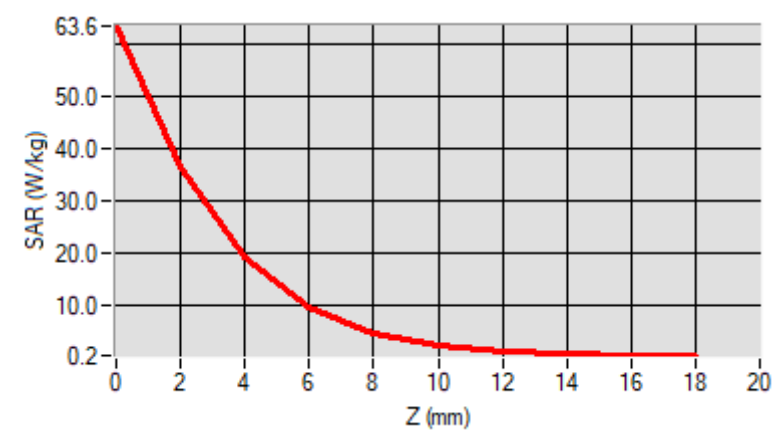
Maximum location: X=5.00, Y=0.00

D. SAR 1g & 10g

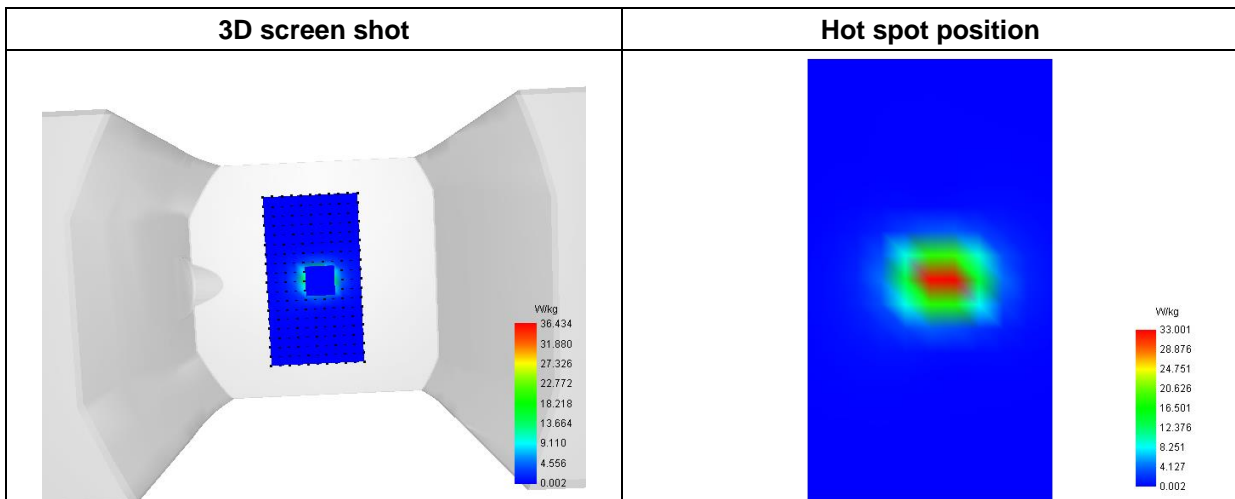
SAR 10g (W/Kg)	5.462480
SAR 1g (W/Kg)	19.007904

E. Z Axis Scan

Z (mm)	0.00	2.00	4.00	6.00	8.00	10.00	12.00	14.00	16.00
SAR (W/Kg)	63.6335	36.4339	19.3475	9.5356	4.5091	2.0948	1.0039	0.5323	0.3279



F. 3D Image



MEASUREMENT 5

Type: Validation measurement (Fast, 75.00 %)

Date of measurement: 2025-08-18

Measurement duration: 12 minutes 21 seconds

E-field Probe: SSE2 - 0725-EPGO-446; ConvF: 1.58; Calibrated: 2025-02-12

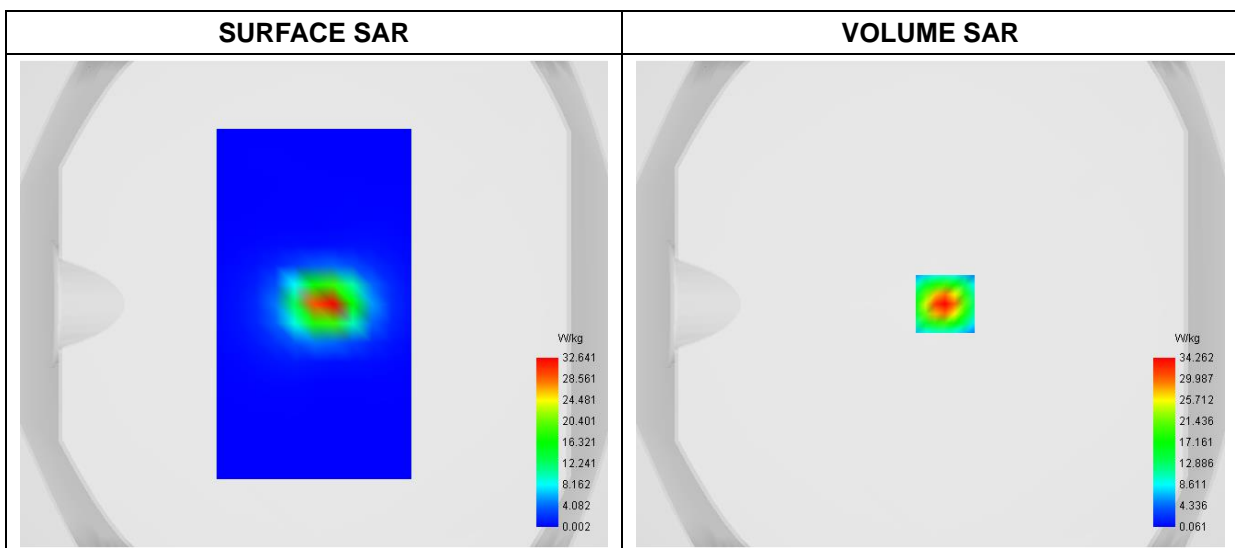
A. Experimental conditions

Area Scan	dx=8mm dy=8mm
Zoom Scan	dx=4mm dy=4mm dz=2mm
Phantom	Validation plane
Device Position	Dipole
Band	CW5800
Signal	CW (Crest factor: 1.0)

B. SAR Measurement Results

Frequency (MHz)	5800.000000
Relative Permittivity (real part)	36.053471
Conductivity (S/m)	5.324295
Power Variation (%)	-1.437500
Ambient Temperature	22.5
Liquid Temperature	22.5

C. SAR Surface and Volume



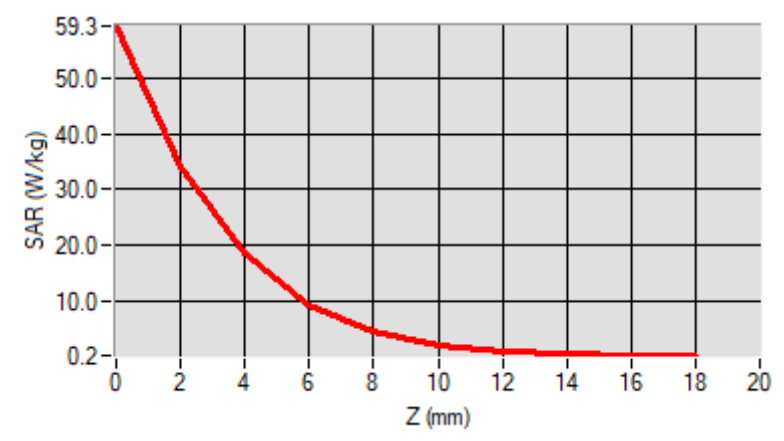
Maximum location: X=6.00, Y=0.00

D. SAR 1g & 10g

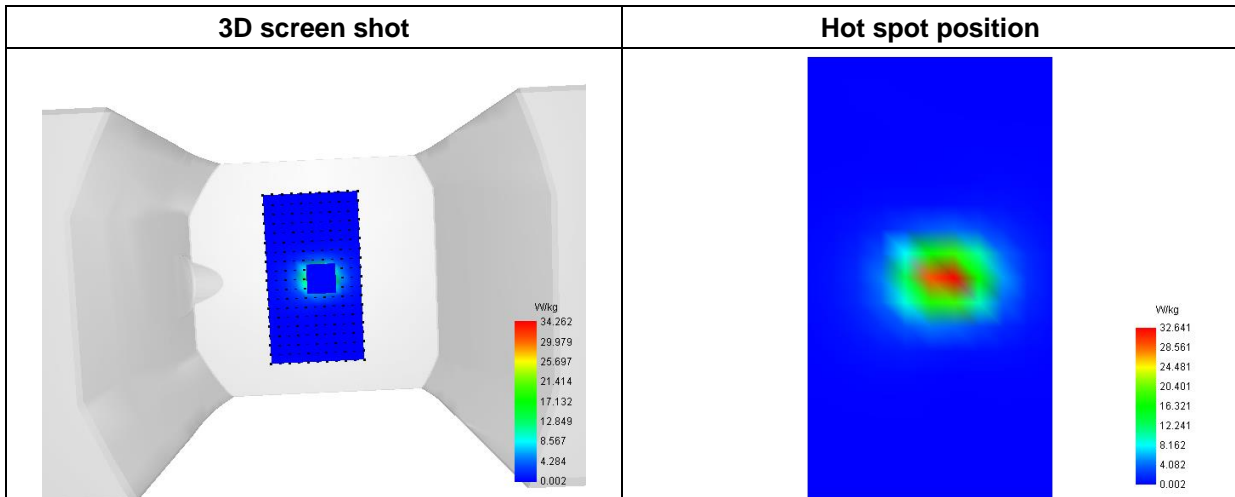
SAR 10g (W/Kg)	5.385932
SAR 1g (W/Kg)	18.087402

E. Z Axis Scan

Z (mm)	0.00	2.00	4.00	6.00	8.00	10.00	12.00	14.00	16.00
SAR (W/Kg)	59.3203	34.2617	18.4347	9.2545	4.4822	2.1439	1.0586	0.5728	0.3524



F. 3D Image



Annex B. Plots of SAR Measurement

MEASUREMENT 1

Type: Measurement (Complete)

Date of measurement: 2025-07-18

Measurement duration: 12 minutes 3 seconds

E-field Probe: SSE2 - 0725-EPGO-446; ConvF: 1.45; Calibrated: 2025-02-12

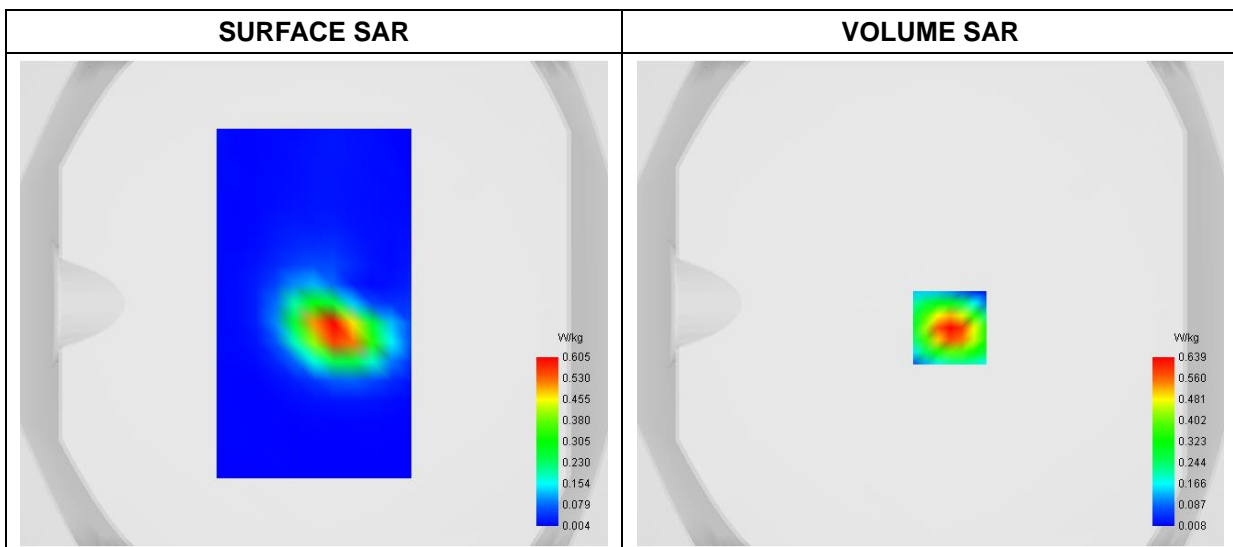
A. Experimental conditions

Area Scan	dx=8mm dy=8mm
Zoom Scan	dx=5mm dy=5mm dz=4mm
Phantom	Flat Plane
Device Position	Back
Band	WiFi_802.11b
Channels	Low
Signal	Duty Cycle 1:1

B. SAR Measurement Results

Frequency (MHz)	2412.000000
Relative Permittivity (real part)	40.672689
Conductivity (S/m)	1.761572
Power Variation (%)	-0.450800
Ambient Temperature	22.3
Liquid Temperature	22.3

C. SAR Surface and Volume



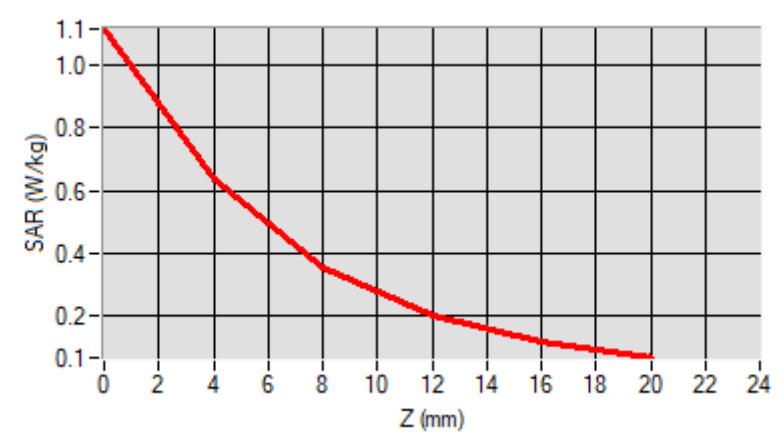
Maximum location: X=8.00, Y=-10.00

D. SAR 1g & 10g

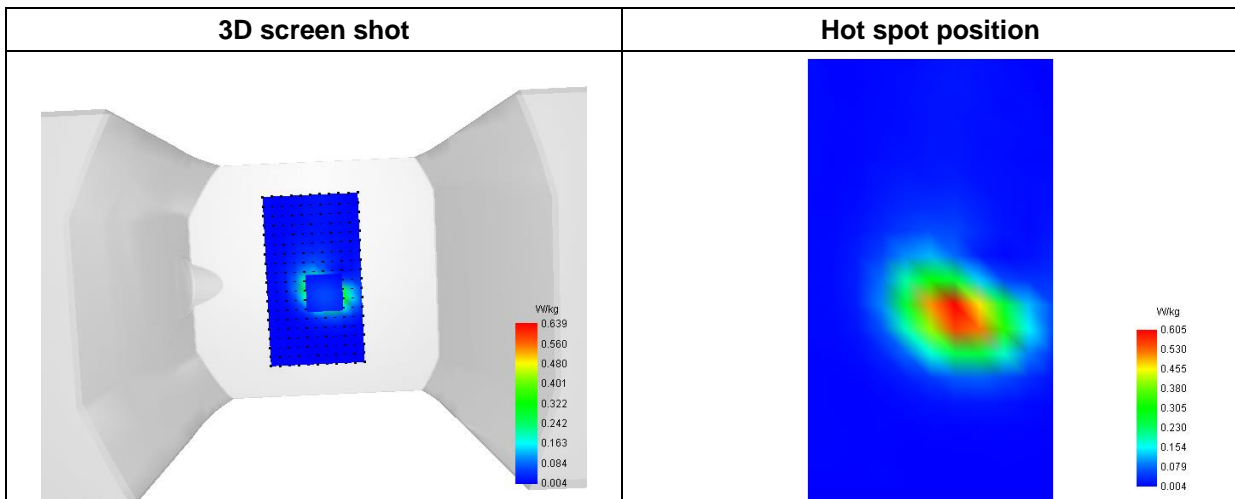
SAR 10g (W/Kg)	0.261646
SAR 1g (W/Kg)	0.572088

E. Z Axis Scan

Z (mm)	0.00	4.00	8.00	12.00	16.00
SAR (W/Kg)	1.1176	0.6388	0.3536	0.1963	0.1135



F. 3D Image



MEASUREMENT 2

Type: Measurement (Complete)

Date of measurement: 2025-08-04

Measurement duration: 12 minutes 3 seconds

E-field Probe: SSE2 - 0725-EPGO-446; ConvF: 1.56; Calibrated: 2025-02-12

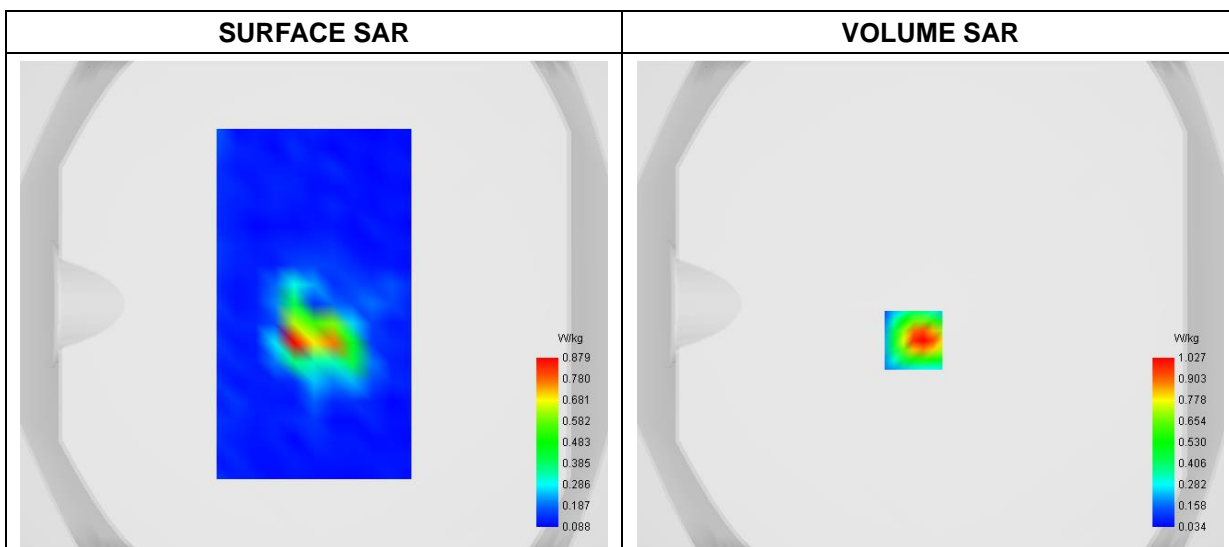
A. Experimental conditions

Area Scan	dx=8mm dy=8mm
Zoom Scan	dx=4mm dy=4mm dz=2mm
Phantom	Flat Plane
Device Position	Back
Band	WiFi(5.2GHz)_ 802.11n-HT20
Channels	High
Signal	Duty Cycle: 1:1

B. SAR Measurement Results

Frequency (MHz)	5240.000000
Relative Permittivity (real part)	37.433869
Conductivity (S/m)	4.732611
Power Variation (%)	1.950500
Ambient Temperature	22.4
Liquid Temperature	22.4

C. SAR Surface and Volume



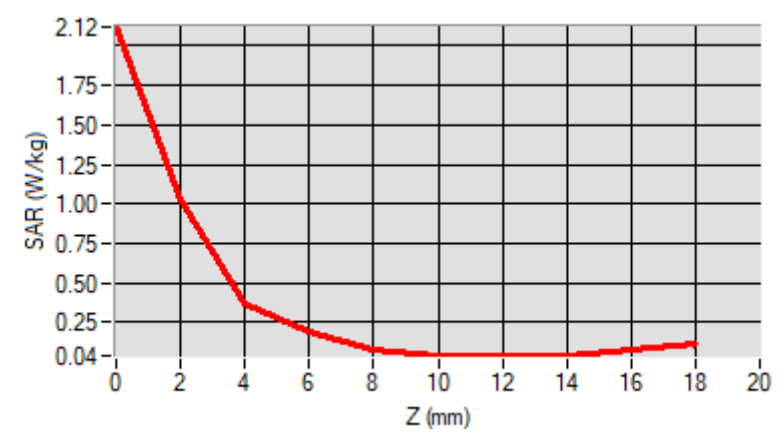
Maximum location: X=-7.00, Y=-15.00

D. SAR 1g & 10g

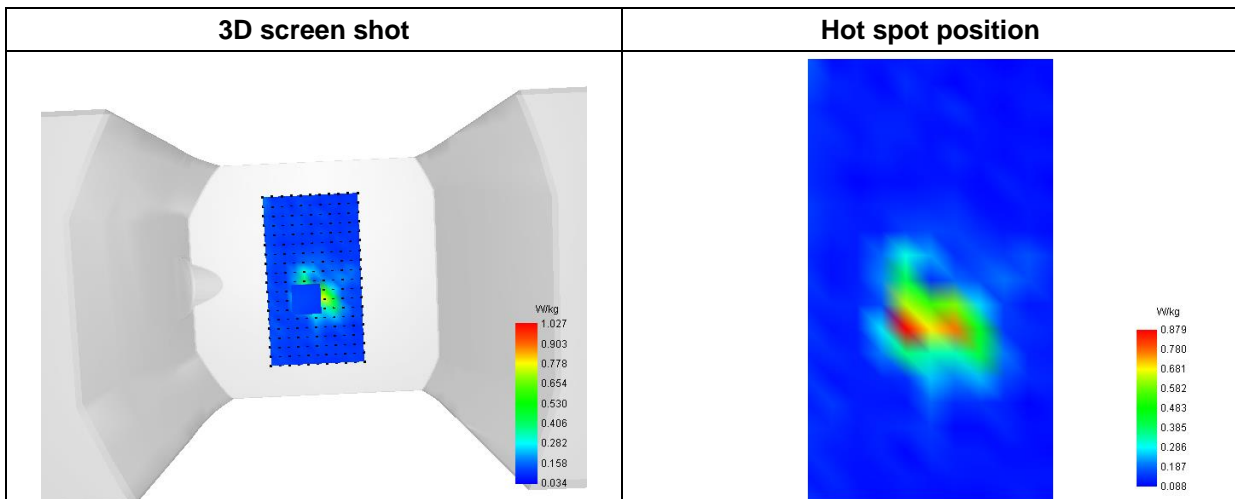
SAR 10g (W/Kg)	0.214150
SAR 1g (W/Kg)	0.570655

E. Z Axis Scan

Z (mm)	0.00	2.00	4.00	6.00	8.00	10.00	12.00	14.00	16.00	18.00
SAR (W/Kg)	2.1192	1.0267	0.3660	0.1888	0.0821	0.0404	0.0460	0.0445	0.0843	



F. 3D Image



MEASUREMENT 3

Type: Measurement (Complete)

Date of measurement: 2025-08-04

Measurement duration: 12 minutes 3 seconds

E-field Probe: SSE2 - 0725-EPGO-446; ConvF: 1.56; Calibrated: 2025-02-12

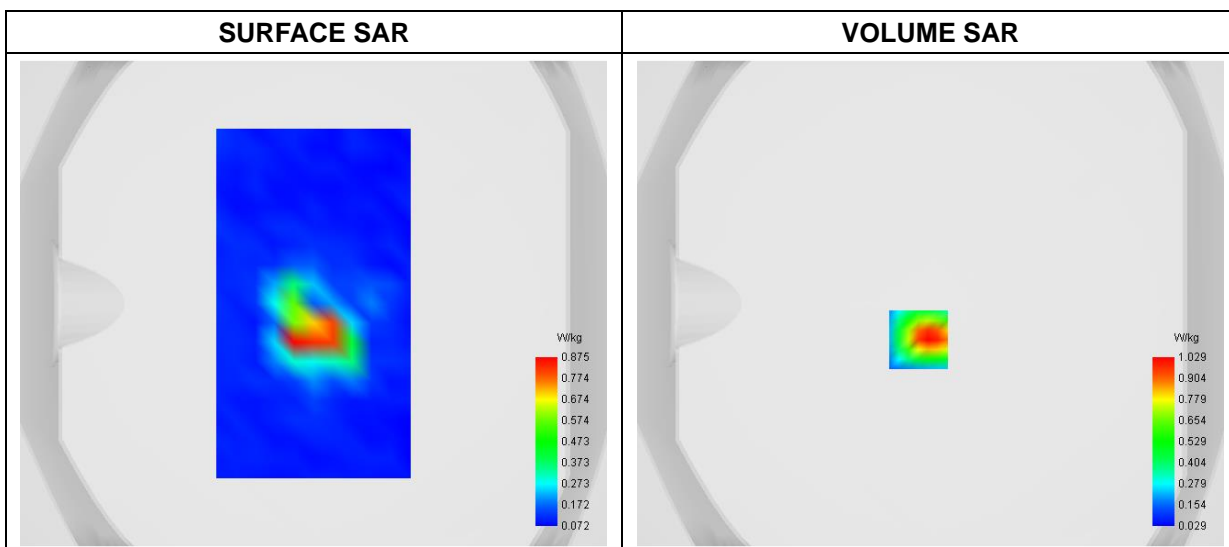
A. Experimental conditions

Area Scan	dx=8mm dy=8mm
Zoom Scan	dx=4mm dy=4mm dz=2mm
Phantom	Flat Plane
Device Position	Back
Band	WiFi(5.3GHz)_802.11ax-HE20
Channels	Low
Signal	Duty Cycle: 1:1

B. SAR Measurement Results

Frequency (MHz)	5260.000000
Relative Permittivity (real part)	37.412839
Conductivity (S/m)	4.734319
Power Variation (%)	1.111400
Ambient Temperature	22.4
Liquid Temperature	22.4

C. SAR Surface and Volume



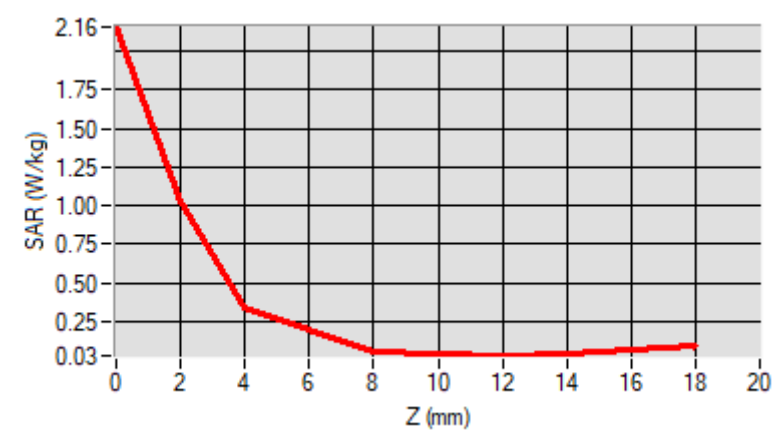
Maximum location: X=-5.00, Y=-15.00

D. SAR 1g & 10g

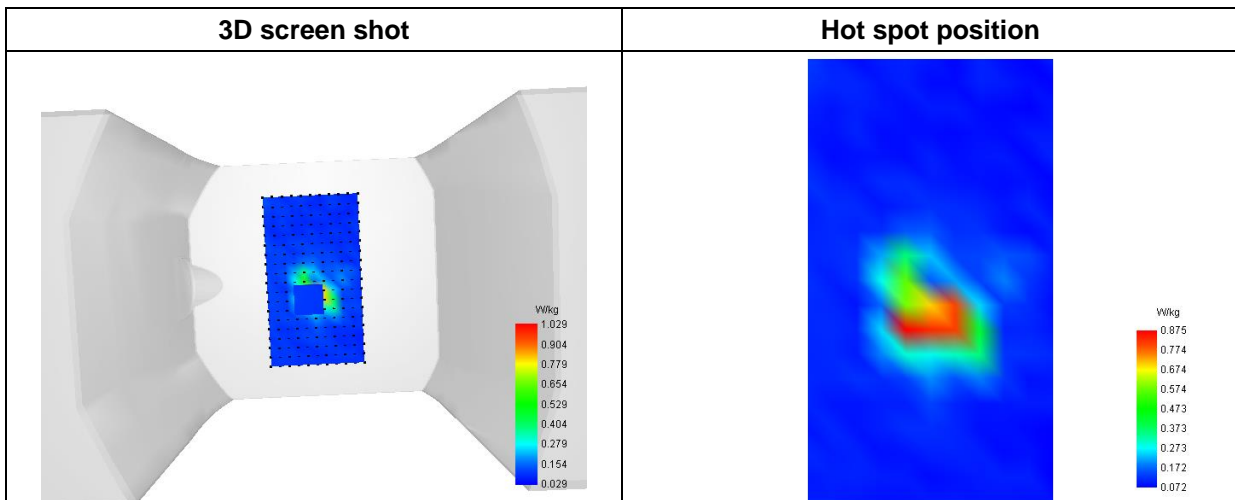
SAR 10g (W/Kg)	0.204256
SAR 1g (W/Kg)	0.567913

E. Z Axis Scan

Z (mm)	0.00	2.00	4.00	6.00	8.00	10.00	12.00	14.00	16.00	18.00
SAR (W/Kg)	2.1550	1.0292	0.3368	0.1993	0.0622	0.0436	0.0307	0.0416	0.0651	0.0651



F. 3D Image



MEASUREMENT 4

Type: Measurement (Complete)

Date of measurement: 2025-08-14

Measurement duration: 12 minutes 21 seconds

E-field Probe: SSE2 - 0725-EPGO-446; ConvF: 1.57; Calibrated: 2025-02-12

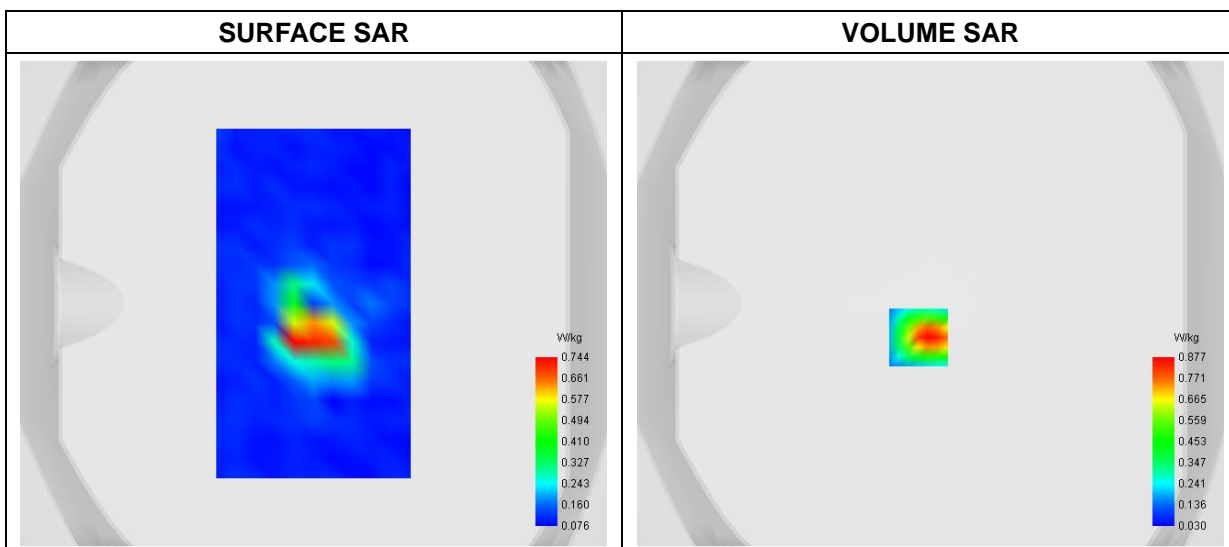
A. Experimental conditions

Area Scan	dx=8mm dy=8mm
Zoom Scan	dx=4mm dy=4mm dz=2mm
Phantom	Flat Plane
Device Position	Back
Band	WiFi(5.6GHz)_ 802.11ac-VHT40
Channels	High
Signal	Duty Cycle: 1:1

B. SAR Measurement Results

Frequency (MHz)	5670.000000
Relative Permittivity (real part)	36.671963
Conductivity (S/m)	5.102789
Power Variation (%)	1.750500
Ambient Temperature	22.5
Liquid Temperature	22.5

C. SAR Surface and Volume



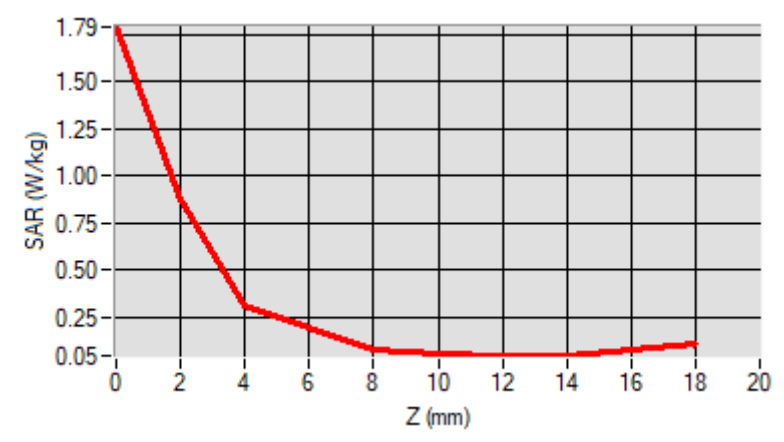
Maximum location: X=-5.00, Y=-14.00

D. SAR 1g & 10g

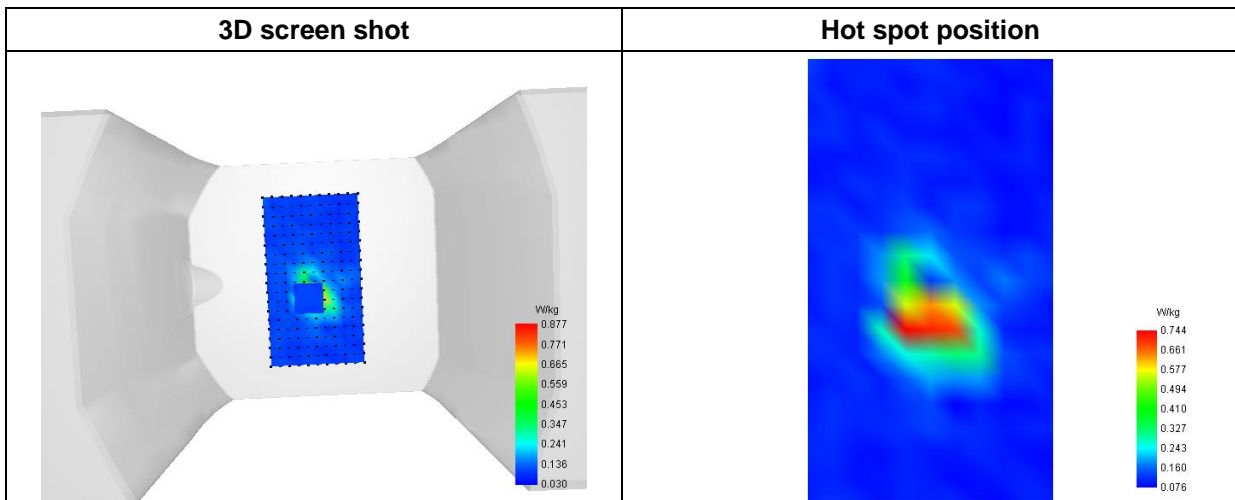
SAR 10g (W/Kg)	0.183603
SAR 1g (W/Kg)	0.477785

E. Z Axis Scan

Z (mm)	0.00	2.00	4.00	6.00	8.00	10.00	12.00	14.00	16.00	18.00
SAR (W/Kg)	1.7883	0.8771	0.3132	0.1901	0.0787	0.0517	0.0457	0.0506	0.0753	0.0753



F. 3D Image



MEASUREMENT 5

Type: Measurement (Complete)

Date of measurement: 2025-08-18

Measurement duration: 12 minutes 21 seconds

E-field Probe: SSE2 - 0725-EPGO-446; ConvF: 1.58; Calibrated: 2025-02-12

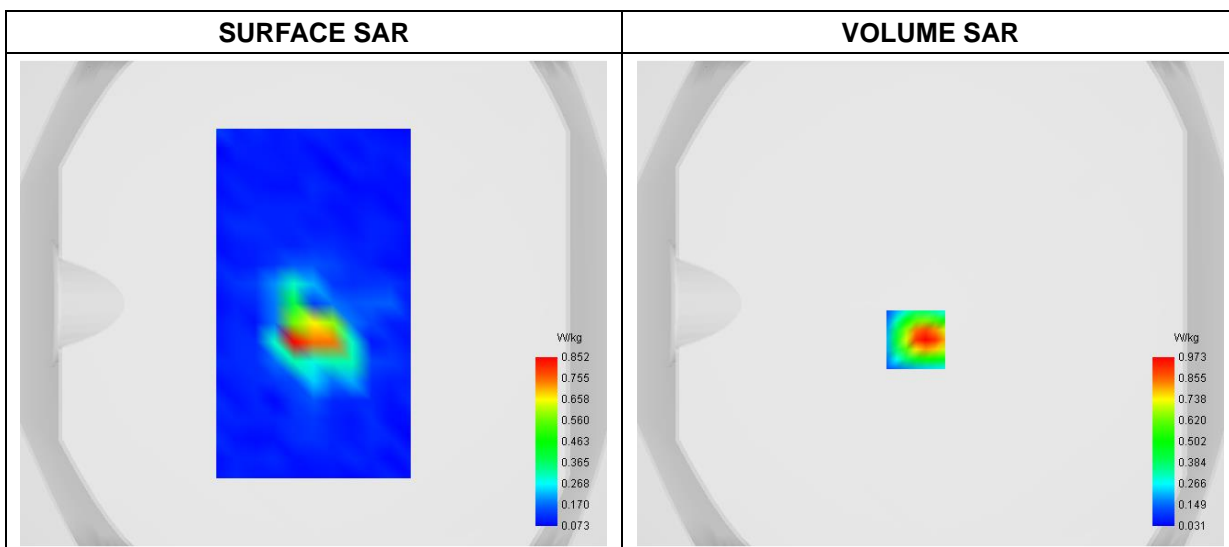
A. Experimental conditions

Area Scan	dx=8mm dy=8mm
Zoom Scan	dx=4mm dy=4mm dz=2mm
Phantom	Flat Plane
Device Position	Back
Band	WiFi(5.8GHz)_802.11n-HT40
Channels	Low
Signal	Duty Cycle: 1:1

B. SAR Measurement Results

Frequency (MHz)	5755.000000
Relative Permittivity (real part)	36.082273
Conductivity (S/m)	5.322836
Power Variation (%)	-1.334100
Ambient Temperature	22.5
Liquid Temperature	22.5

C. SAR Surface and Volume



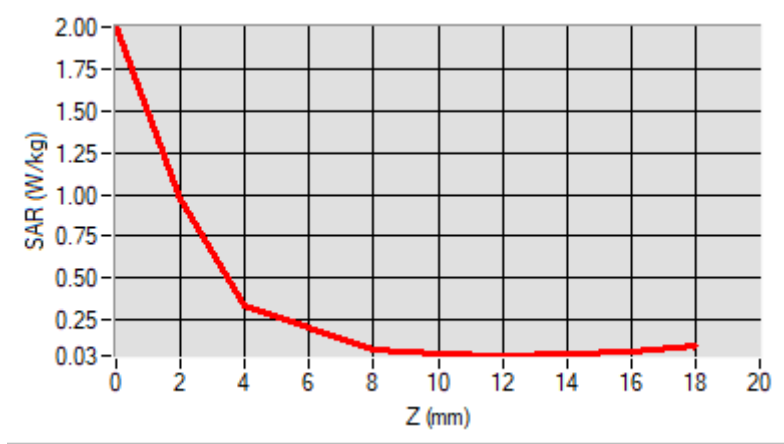
Maximum location: X=-6.00, Y=-15.00

D. SAR 1g & 10g

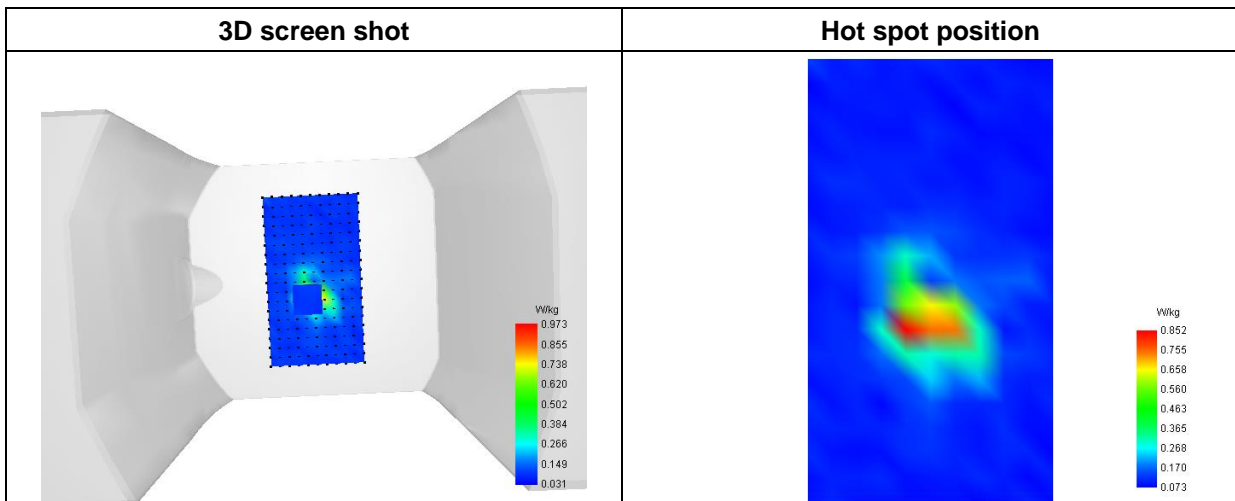
SAR 10g (W/Kg)	0.193906
SAR 1g (W/Kg)	0.532558

E. Z Axis Scan

Z (mm)	0.00	2.00	4.00	6.00	8.00	10.00	12.00	14.00	16.00	18.00
SAR (W/Kg)	2.0030	0.9731	0.3351	0.2051	0.0683	0.0508	0.0338	0.0457	0.0627	0.0627



F. 3D Image



MEASUREMENT 6

Type: Measurement (Complete)

Date of measurement: 2025-07-18

Measurement duration: 12 minutes 3 seconds

E-field Probe: SSE2 - 0725-EPGO-446; ConvF: 1.45; Calibrated: 2025-02-12

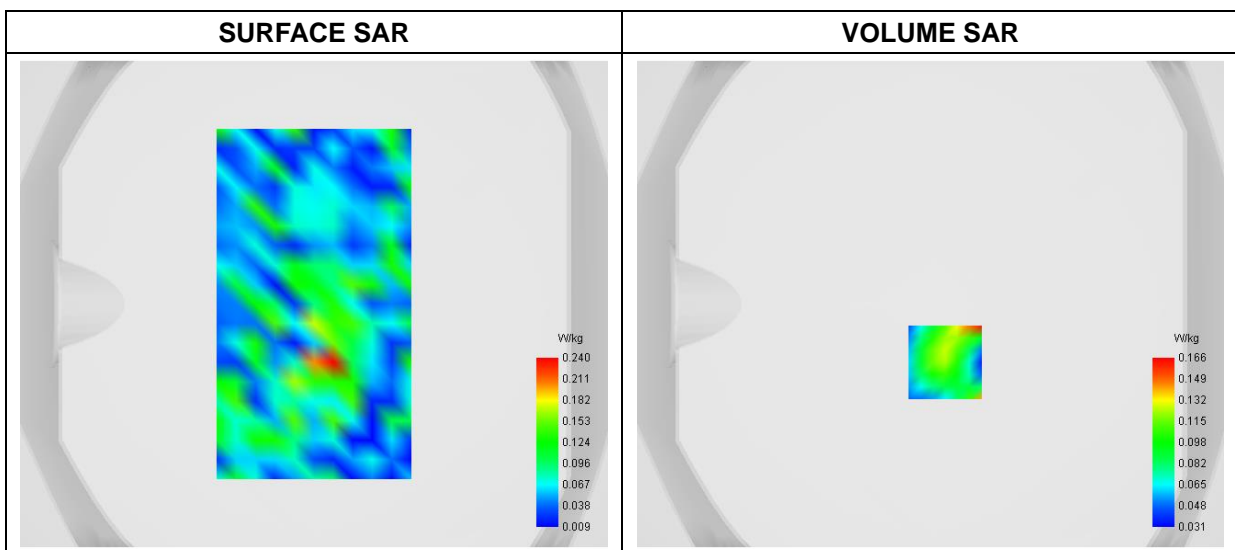
A. Experimental conditions

Area Scan	dx=8mm dy=8mm
Zoom Scan	dx=5mm dy=5mm dz=4mm
Phantom	Flat Plane
Device Position	Back
Band	Bluetooth_8DPSK
Channels	Low
Signal	Duty Cycle 1:1

B. SAR Measurement Results

Frequency (MHz)	2402.000000
Relative Permittivity (real part)	40.664875
Conductivity (S/m)	1.751383
Power Variation (%)	2.175900
Ambient Temperature	22.3
Liquid Temperature	22.3

C. SAR Surface and Volume



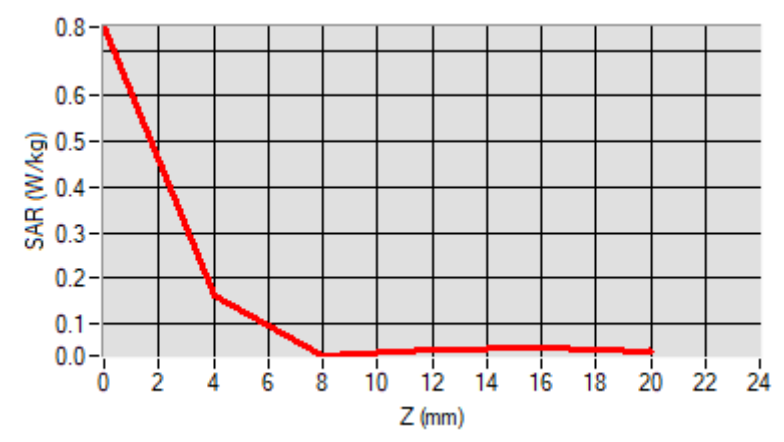
Maximum location: X=6.00, Y=-24.00

D. SAR 1g & 10g

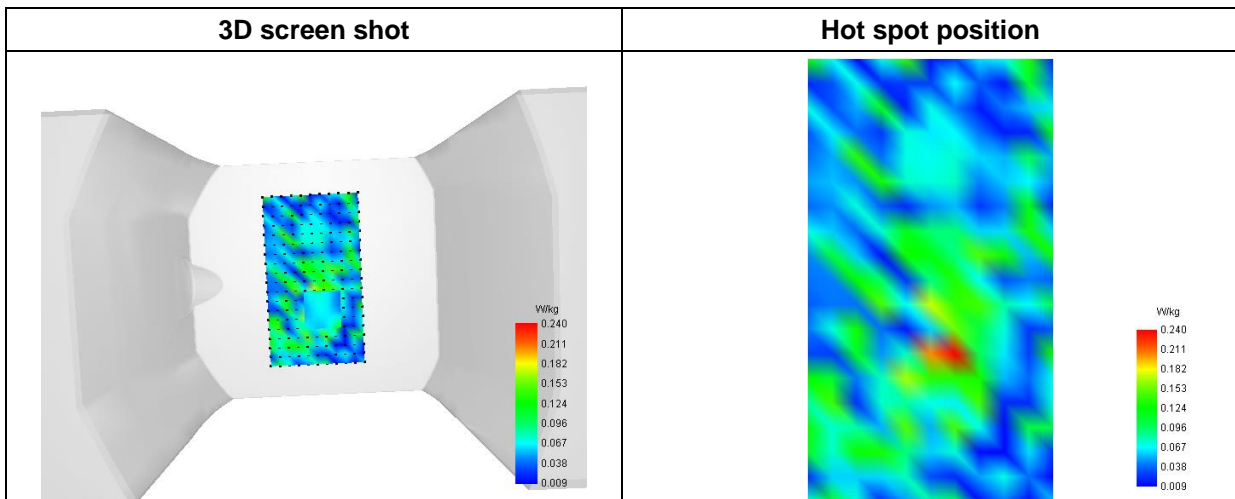
SAR 10g (W/Kg)	0.104666
SAR 1g (W/Kg)	0.129287

E. Z Axis Scan

Z (mm)	0.00	4.00	8.00	12.00	16.00
SAR (W/Kg)	0.7515	0.1617	0.0308	0.0444	0.0467



F. 3D Image



MEASUREMENT 7

Type: Measurement (Complete)

Date of measurement: 2025-07-18

Measurement duration: 12 minutes 3 seconds

E-field Probe: SSE2 - 0725-EPGO-446; ConvF: 1.45; Calibrated: 2025-02-12

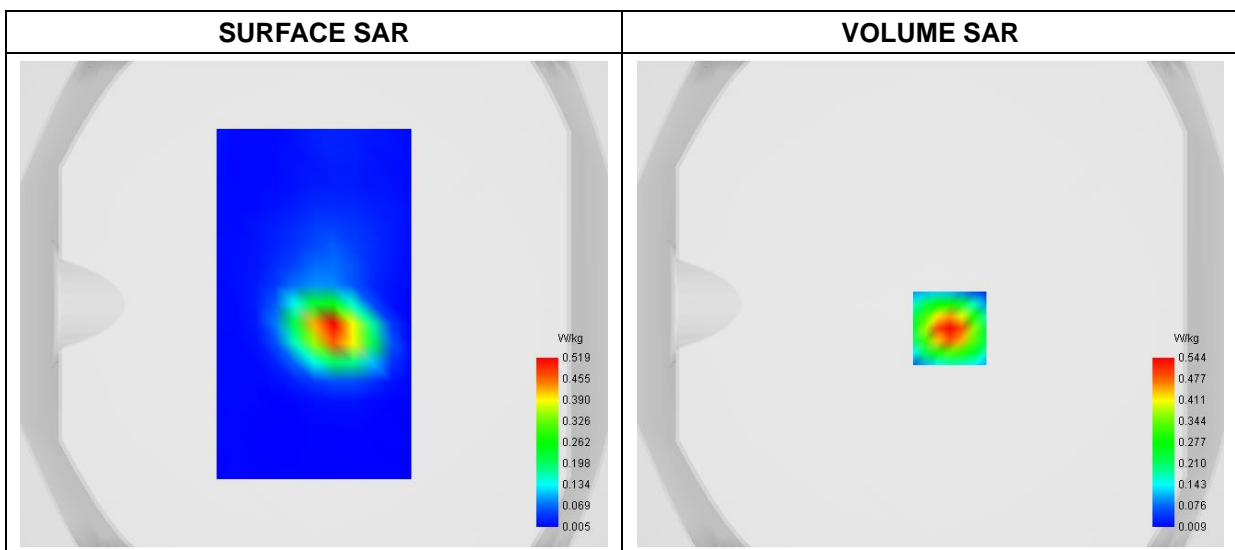
A. Experimental conditions

Area Scan	dx=8mm dy=8mm
Zoom Scan	dx=5mm dy=5mm dz=4mm
Phantom	Flat Plane
Device Position	Back
Band	WiFi_802.11b
Channels	Low
Signal	Duty Cycle 1:1

B. SAR Measurement Results

Frequency (MHz)	2412.000000
Relative Permittivity (real part)	40.672689
Conductivity (S/m)	1.761572
Power Variation (%)	3.175900
Ambient Temperature	22.3
Liquid Temperature	22.3

C. SAR Surface and Volume



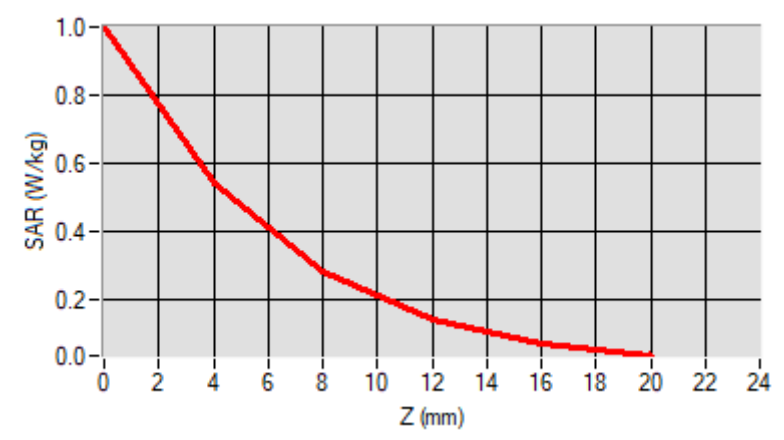
Maximum location: X=8.00, Y=-10.00

D. SAR 1g & 10g

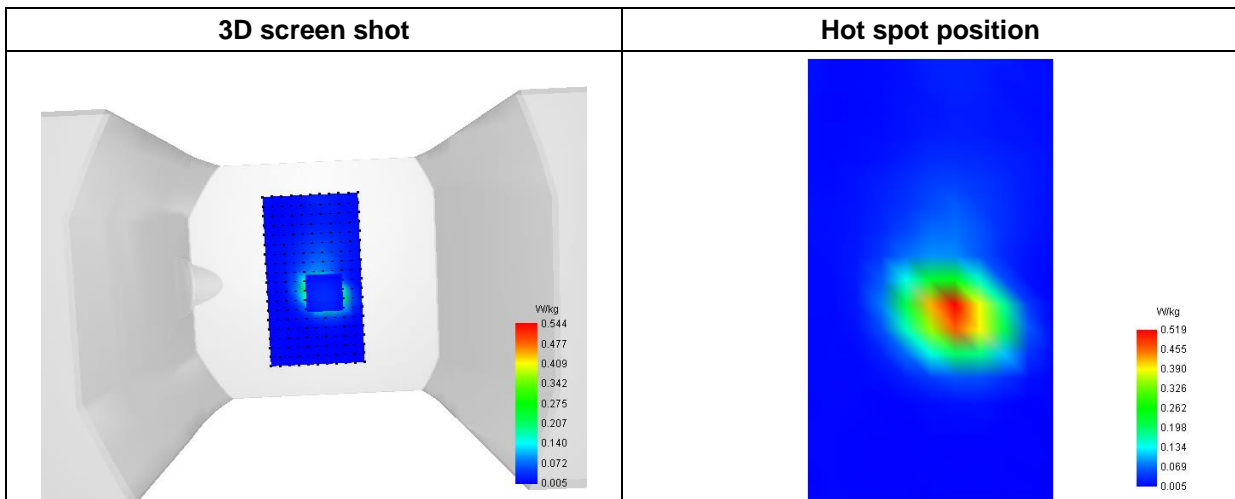
SAR 10g (W/Kg)	0.211585
SAR 1g (W/Kg)	0.483959

E. Z Axis Scan

Z (mm)	0.00	4.00	8.00	12.00	16.00
SAR (W/Kg)	0.9998	0.5443	0.2820	0.1438	0.0752



F. 3D Image



MEASUREMENT 8

Type: Measurement (Complete)

Date of measurement: 2025-08-04

Measurement duration: 12 minutes 21 seconds

E-field Probe: SSE2 - 0725-EPGO-446; ConvF: 1.56; Calibrated: 2025-02-12

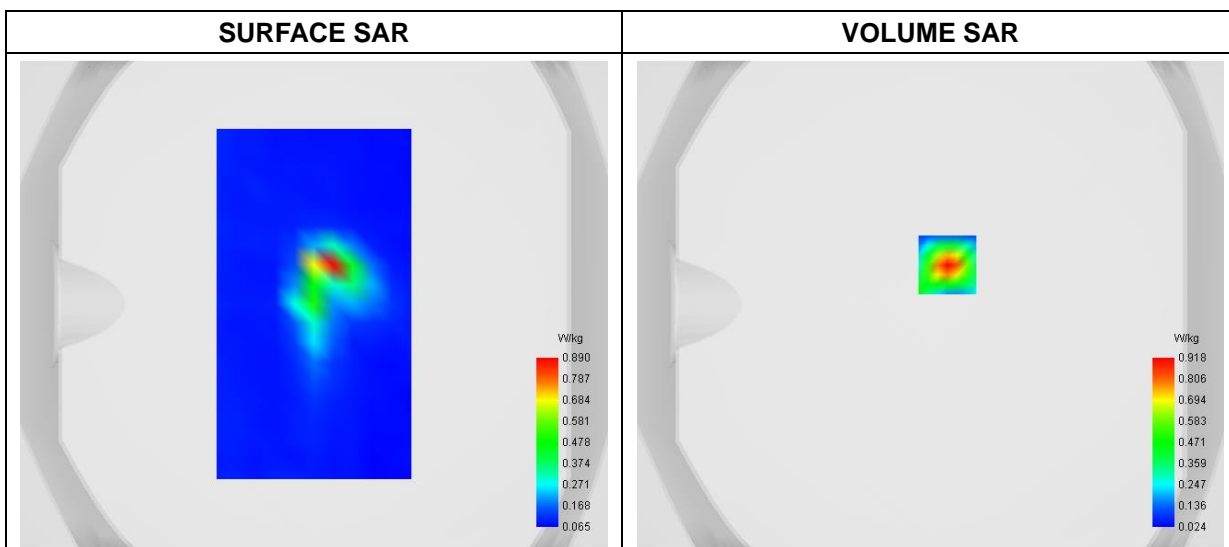
A. Experimental conditions

Area Scan	dx=8mm dy=8mm
Zoom Scan	dx=4mm dy=4mm dz=2mm
Phantom	Flat Plane
Device Position	Top
Band	WiFi(5.2GHz)_802.11a
Channels	Low
Signal	Duty Cycle: 1:1

B. SAR Measurement Results

Frequency (MHz)	5180.000000
Relative Permittivity (real part)	37.451369
Conductivity (S/m)	4.732611
Power Variation (%)	4.137500
Ambient Temperature	22.4
Liquid Temperature	22.4

C. SAR Surface and Volume



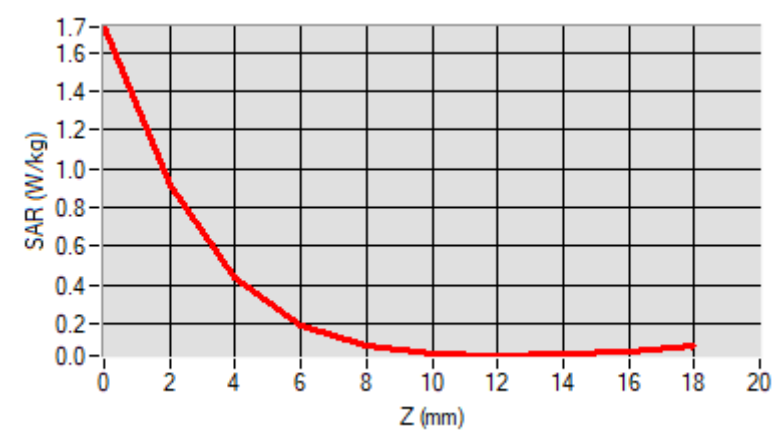
Maximum location: X=7.00, Y=16.00

D. SAR 1g & 10g

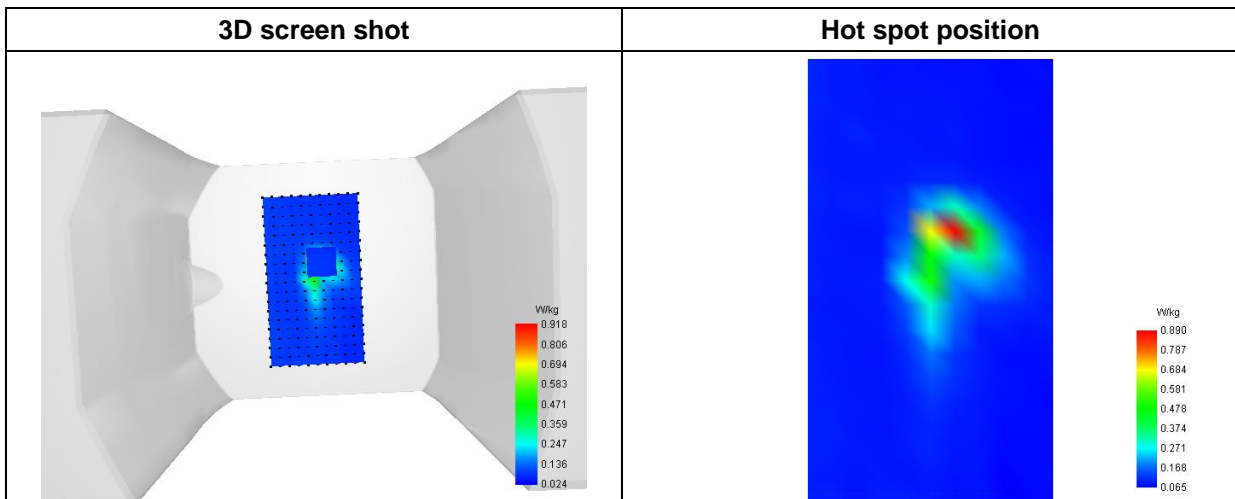
SAR 10g (W/Kg)	0.158023
SAR 1g (W/Kg)	0.472266

E. Z Axis Scan

Z (mm)	0.00	2.00	4.00	6.00	8.00	10.00	12.00	14.00	16.00	18.00
SAR (W/Kg)	1.7307	0.9180	0.4342	0.1890	0.0841	0.0447	0.0345	0.0399	0.0577	



F. 3D Image



MEASUREMENT 9

Type: Measurement (Complete)

Date of measurement: 2025-08-12

Measurement duration: 12 minutes 21 seconds

E-field Probe: SSE2 - 0725-EPGO-446; ConvF: 1.54; Calibrated: 2025-02-12

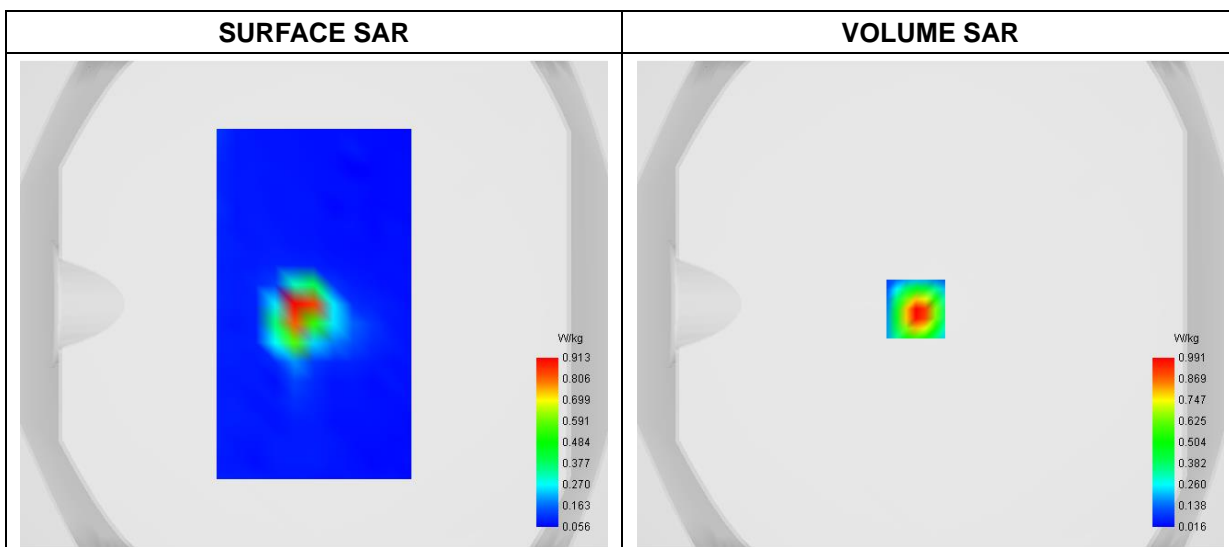
A. Experimental conditions

Area Scan	dx=8mm dy=8mm
Zoom Scan	dx=4mm dy=4mm dz=2mm
Phantom	Flat Plane
Device Position	Back
Band	WiFi(5.3GHz)_802.11a
Channels	High
Signal	Duty Cycle: 1:1

B. SAR Measurement Results

Frequency (MHz)	5320.000000
Relative Permittivity (real part)	37.014839
Conductivity (S/m)	4.894319
Power Variation (%)	2.204800
Ambient Temperature	22.4
Liquid Temperature	22.4

C. SAR Surface and Volume



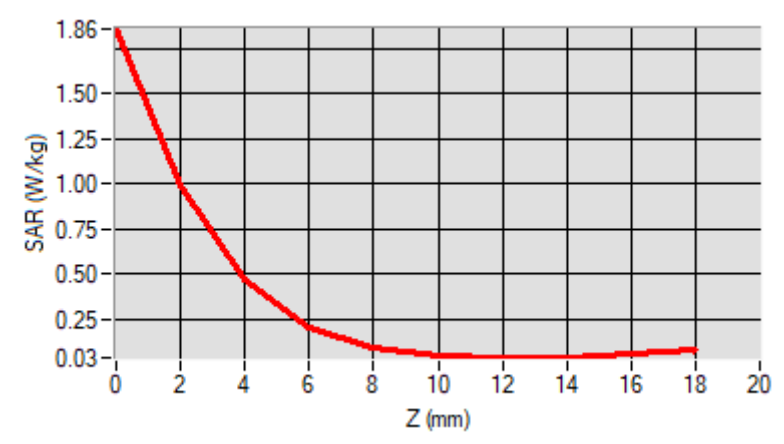
Maximum location: X=-6.00, Y=-2.00

D. SAR 1g & 10g

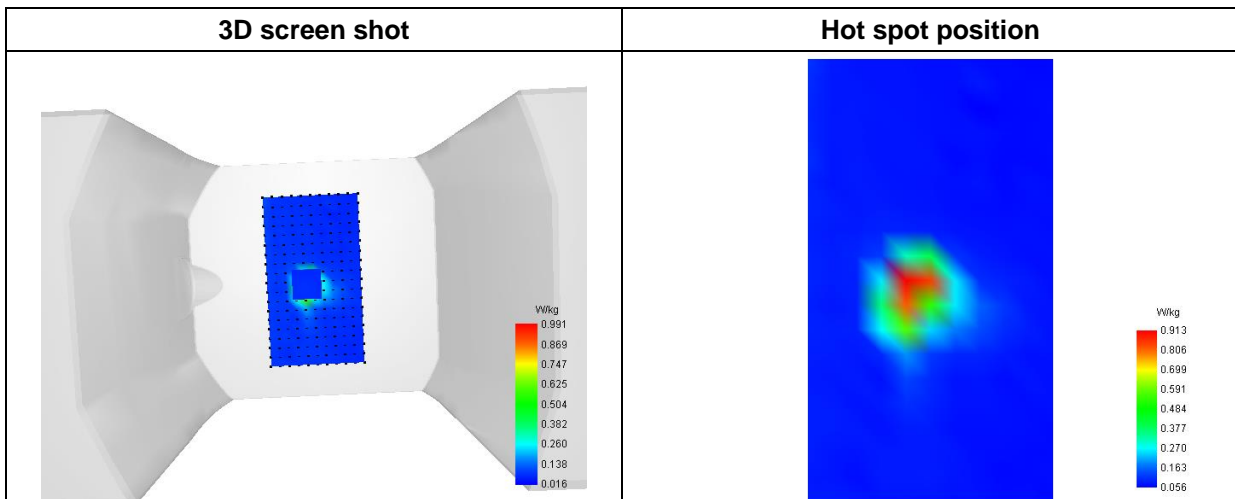
SAR 10g (W/Kg)	0.174552
SAR 1g (W/Kg)	0.539826

E. Z Axis Scan

Z (mm)	0.00	2.00	4.00	6.00	8.00	10.00	12.00	14.00	16.00	18.00
SAR (W/Kg)	1.8595	0.9909	0.4721	0.2067	0.0915	0.0471	0.0344	0.0375	0.0524	0.0524



F. 3D Image



MEASUREMENT 10

Type: Measurement (Complete)

Date of measurement: 2025-08-14

Measurement duration: 12 minutes 21 seconds

E-field Probe: SSE2 - 0725-EPGO-446; ConvF: 1.57; Calibrated: 2025-02-12

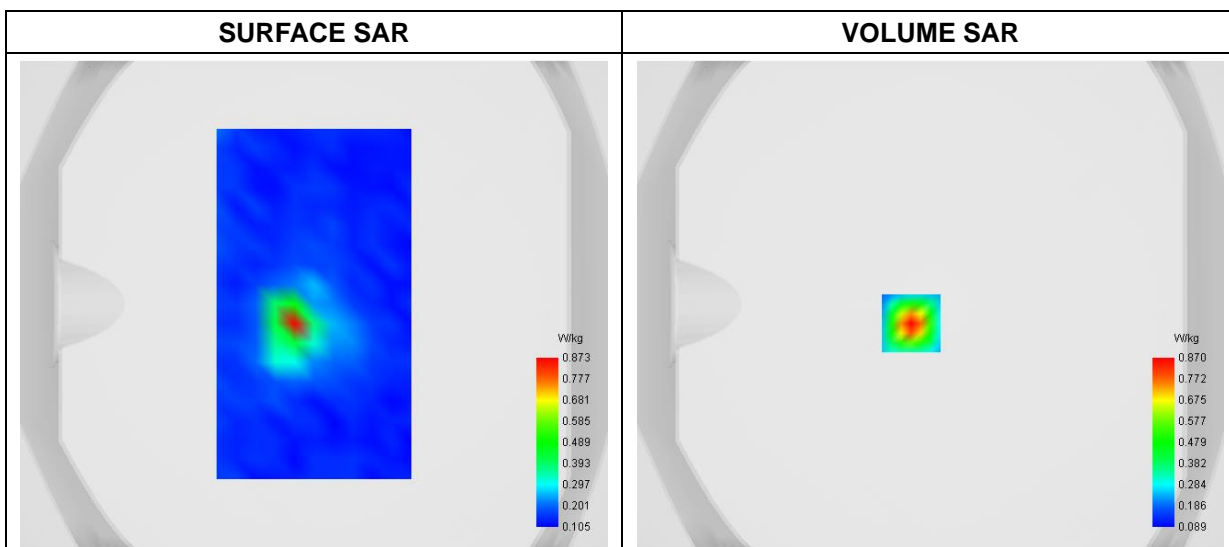
A. Experimental conditions

Area Scan	dx=8mm dy=8mm
Zoom Scan	dx=4mm dy=4mm dz=2mm
Phantom	Flat Plane
Device Position	Back
Band	WiFi(5.6GHz)_802.11a
Channels	Middle
Signal	Duty Cycle: 1:1

B. SAR Measurement Results

Frequency (MHz)	5580.000000
Relative Permittivity (real part)	36.661963
Conductivity (S/m)	5.092789
Power Variation (%)	-1.390400
Ambient Temperature	22.5
Liquid Temperature	22.5

C. SAR Surface and Volume



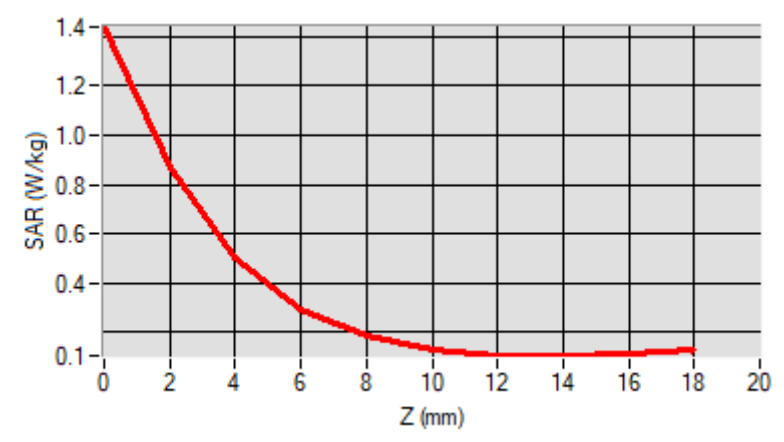
Maximum location: X=-8.00, Y=-8.00

D. SAR 1g & 10g

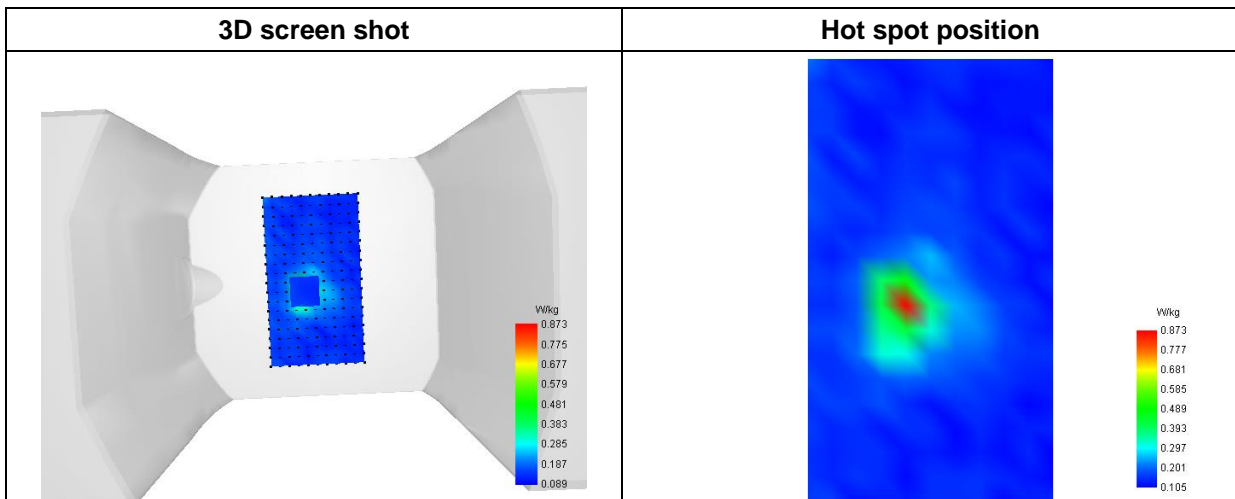
SAR 10g (W/Kg)	0.228304
SAR 1g (W/Kg)	0.494154

E. Z Axis Scan

Z (mm)	0.00	2.00	4.00	6.00	8.00	10.00	12.00	14.00	16.00	18.00
SAR (W/Kg)	1.4397	0.8698	0.5065	0.2946	0.1838	0.1300	0.1083	0.1057	0.1153	0.1153



F. 3D Image



MEASUREMENT 11

Type: Measurement (Complete)

Date of measurement: 2025-08-18

Measurement duration: 12 minutes 21 seconds

E-field Probe: SSE2 - 0725-EPGO-446; ConvF: 1.58; Calibrated: 2025-02-12

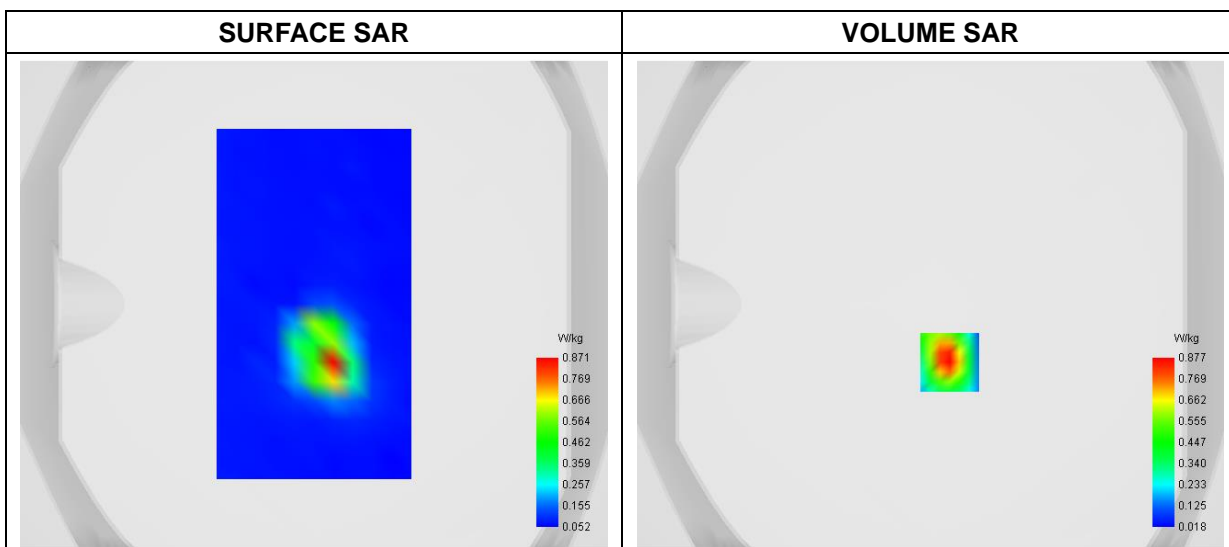
A. Experimental conditions

Area Scan	dx=8mm dy=8mm
Zoom Scan	dx=4mm dy=4mm dz=2mm
Phantom	Flat Plane
Device Position	Back
Band	WiFi(5.8GHz)_ 802.11a
Channels	High
Signal	Duty Cycle: 1:1

B. SAR Measurement Results

Frequency (MHz)	5825.000000
Relative Permittivity (real part)	36.042273
Conductivity (S/m)	5.322836
Power Variation (%)	2.170400
Ambient Temperature	22.5
Liquid Temperature	22.5

C. SAR Surface and Volume



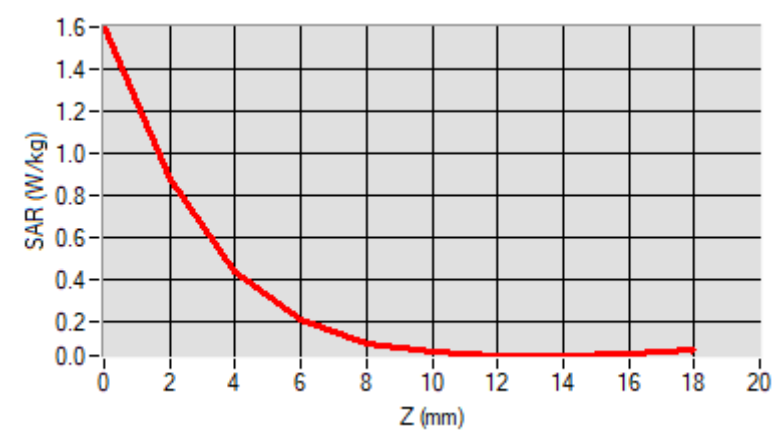
Maximum location: X=8.00, Y=-24.00

D. SAR 1g & 10g

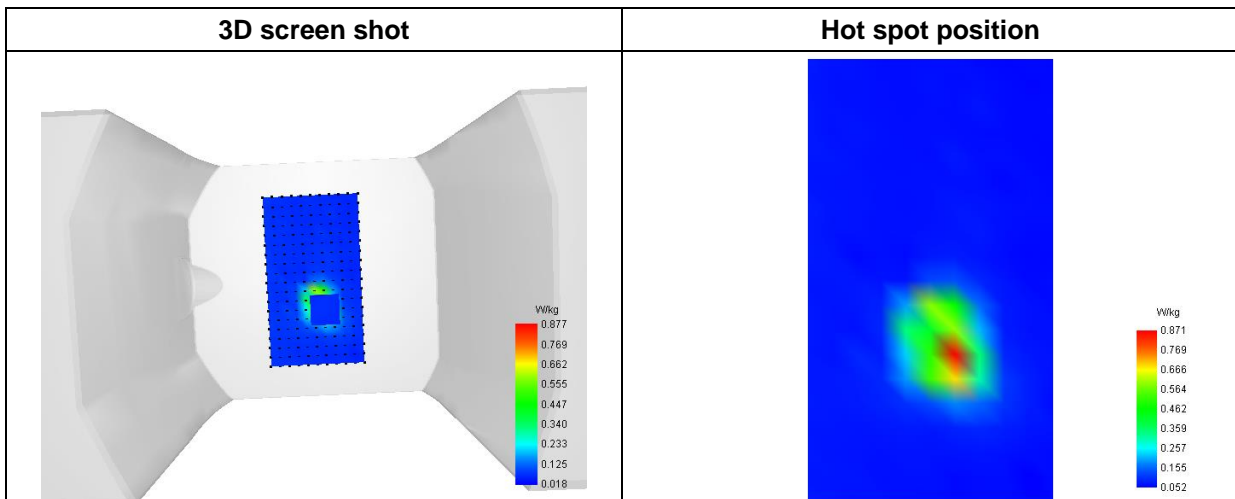
SAR 10g (W/Kg)	0.170152
SAR 1g (W/Kg)	0.475309

E. Z Axis Scan

Z (mm)	0.00	2.00	4.00	6.00	8.00	10.00	12.00	14.00	16.00	18.00
SAR (W/Kg)	1.5942	0.8767	0.4408	0.2089	0.1021	0.0575	0.0426	0.0431	0.0431	0.0539



F. 3D Image



MEASUREMENT 12

Type: Measurement (Complete)

Date of measurement: 2025-07-18

Measurement duration: 12 minutes 3 seconds

E-field Probe: SSE2 - 0725-EPGO-446; ConvF: 1.45; Calibrated: 2025-02-12

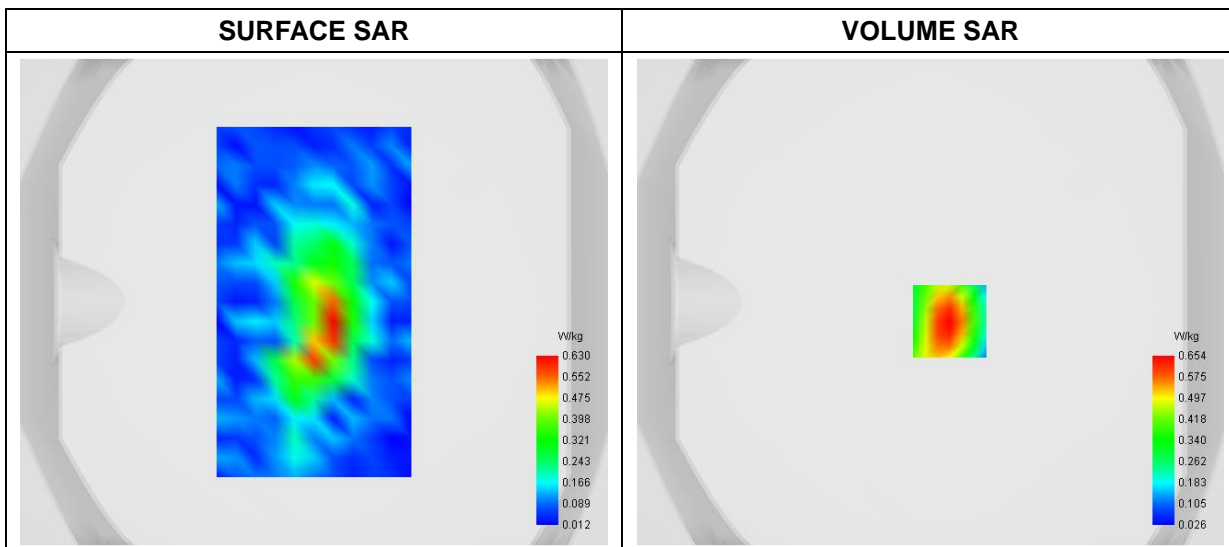
A. Experimental conditions

Area Scan	dx=8mm dy=8mm
Zoom Scan	dx=5mm dy=5mm dz=4mm
Phantom	Flat Plane
Device Position	Right
Band	WiFi_802.11b
Channels	Middle
Signal	Duty Cycle 1:1

B. SAR Measurement Results

Frequency (MHz)	2437.000000
Relative Permittivity (real part)	40.682285
Conductivity (S/m)	1.762855
Power Variation (%)	-2.407100
Ambient Temperature	22.3
Liquid Temperature	22.3

C. SAR Surface and Volume



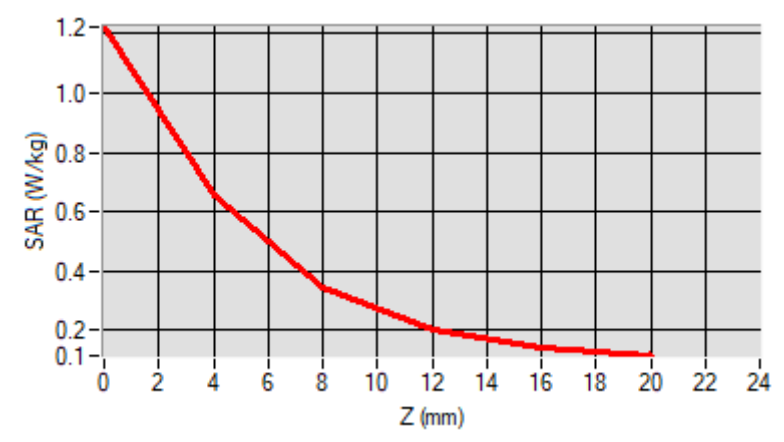
Maximum location: X=8.00, Y=-8.00

D. SAR 1g & 10g

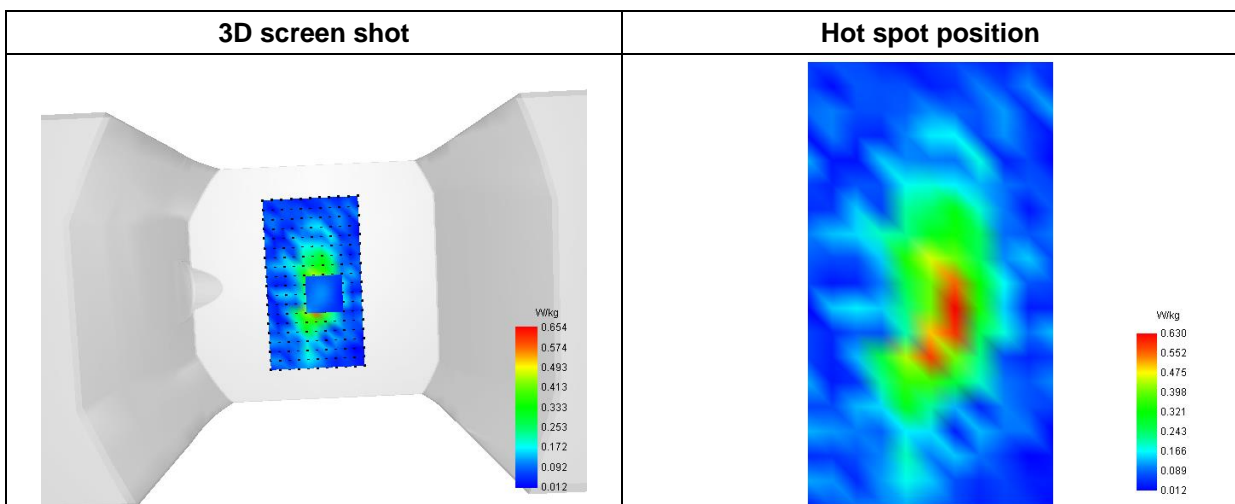
SAR 10g (W/Kg)	0.311161
SAR 1g (W/Kg)	0.617269

E. Z Axis Scan

Z (mm)	0.00	4.00	8.00	12.00	16.00
SAR (W/Kg)	1.2232	0.6539	0.3459	0.2006	0.1416



F. 3D Image



MEASUREMENT 13

Type: Measurement (Complete)

Date of measurement: 2025-07-18

Measurement duration: 12 minutes 3 seconds

E-field Probe: SSE2 - 0725-EPGO-446; ConvF: 1.45; Calibrated: 2025-02-12

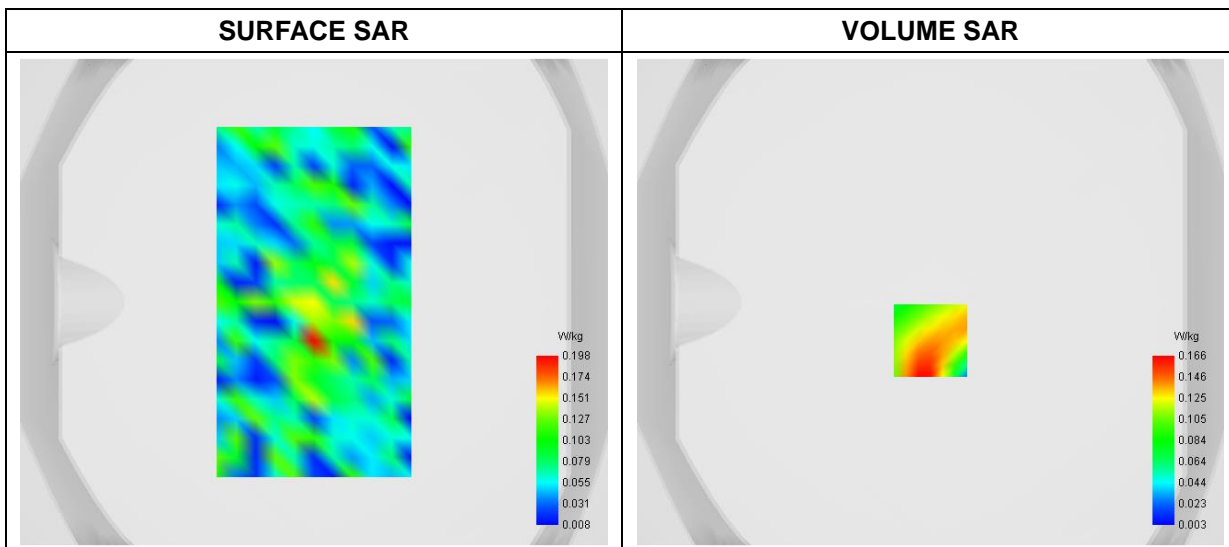
A. Experimental conditions

Area Scan	dx=8mm dy=8mm
Zoom Scan	dx=5mm dy=5mm dz=4mm
Phantom	Flat Plane
Device Position	Right
Band	Bluetooth_LE-2Mbps
Channels	Middle
Signal	Duty Cycle 1:1

B. SAR Measurement Results

Frequency (MHz)	2440.000000
Relative Permittivity (real part)	40.692374
Conductivity (S/m)	1.763261
Power Variation (%)	2.237400
Ambient Temperature	22.3
Liquid Temperature	22.3

C. SAR Surface and Volume



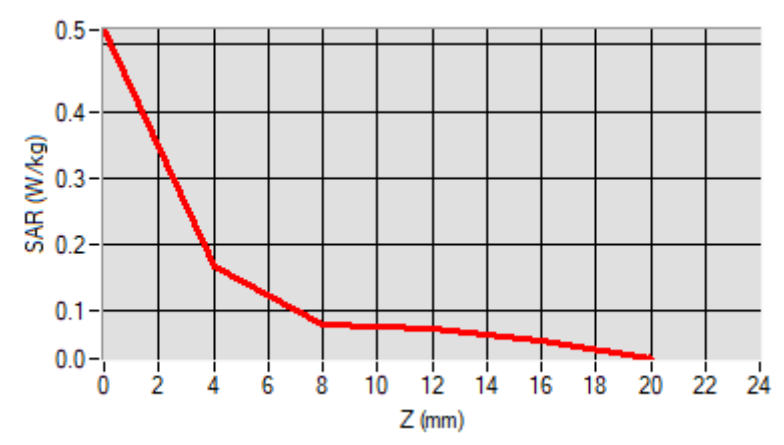
Maximum location: X=0.00, Y=-16.00

D. SAR 1g & 10g

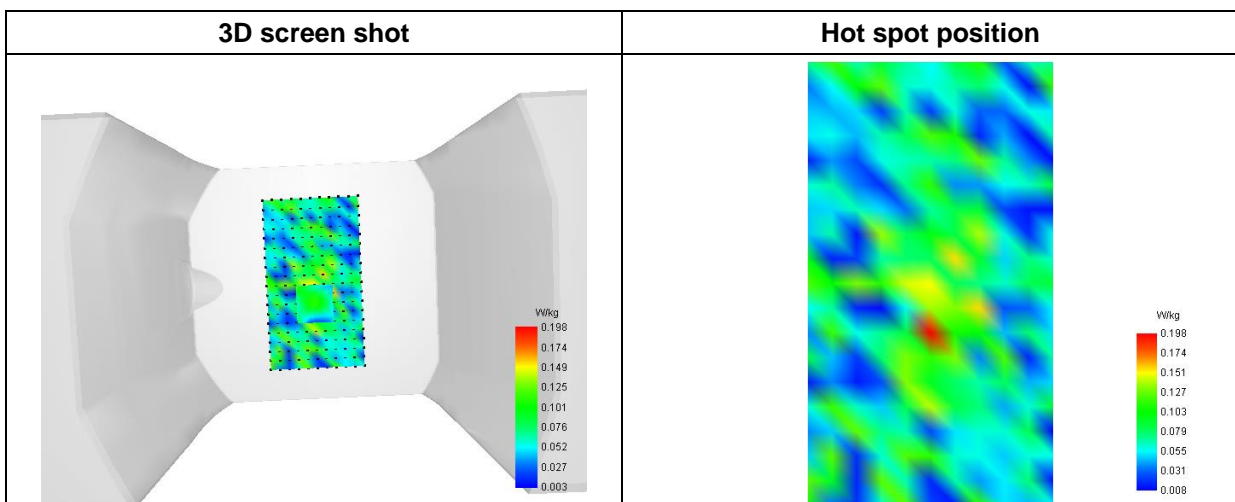
SAR 10g (W/Kg)	0.099876
SAR 1g (W/Kg)	0.162544

E. Z Axis Scan

Z (mm)	0.00	4.00	8.00	12.00	16.00
SAR (W/Kg)	0.5226	0.1661	0.0791	0.0719	0.0526



F. 3D Image



Annex C. EUT Photos

Please refer to the Annex for SAR

Annex D. Test Setup Photos

Please refer to the Annex for SAR

Annex E. Calibration Certificate

Please refer to the exhibit for the calibration certificate

***** END OF REPORT *****