

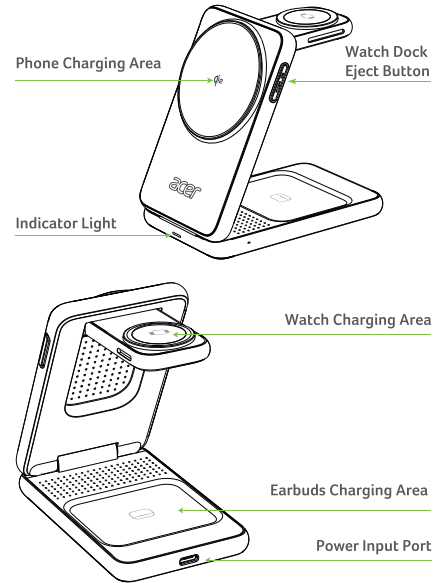
acer



## 3-in-1 Wireless Charging Station

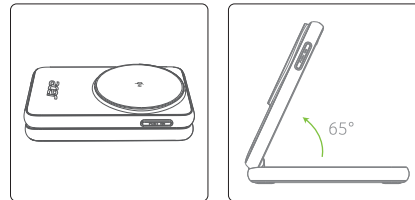
SL-S3

### Product Overview



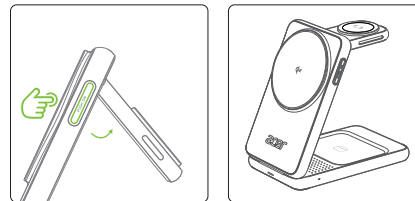
1

### Deployment Guide



1 Folded Status

2 Deploy the Earbud Charging Dock



3 Press to Eject Watch Charging Dock

4 Fully Unfolded Status

2

### Indicator Status

Mode	LED Status
Power ON	Enter Standby
Standby	Solid Blue
Case Charging	Solid Green
Case Fully Charged	Solid Green
Phone FOD Protection	Blue Blinking until cleared
Earbud FOD Protection	Green Blinking until cleared

### Operation Instruction

- Charge 3 devices at once: Phone, watch, earbuds case.
- Power on: Use a 9V/3A or 12V/2.4A adapter with the included Type-C cable.
- Place & Charge:
  - Phone: Center area (align magnets).
  - Watch: Top round spot (must support wireless charging).
  - Earbuds: Bottom round spot (must support wireless charging).

3

### Cautions

#### Applicable Devices

Please check whether your phone supports wireless charging. This product supports fast wireless charging and realizes short-distance wireless power transmission through coil induction.

#### Adapter Choices

When using an adapter that meets the QC3.0 standard, the wireless charger supports a 15W load;

\*To ensure the normal use of the charger, it is recommended to use PD fast charging or adapters that meet the QC3.0 standard.

#### Warning

- Do not put metal debris or magnetic cards on the charging board, as it may cause the charger to heat up!
- Foreign objects should be removed when an alarm is triggered!
- Slight heating is a normal phenomenon, as the phone battery may generate heat during charging!
- Do not place the charger near a fire source or corrosive environment!

4

### Specifications

Product Size: 30×96×65 mm  
Input: 9V/3A 12V/2.4A  
Product Standard: Qi2  
Phone Output: 15W Max  
Earbuds Output: 5W Max  
Watch Output: 2.5W Max  
Charging Distance: ≤4mm  
Charging Efficiency: 60%≤P≤80%  
Input Interface: Type-C

### Contents

- 3-in-1 Wireless Charging Station x 1
- Charging Cable x 1
- Power Adapter x 1
- Product Manual x 1
- Warranty Card x 1

### FCC Statement

This device complies with part 15 of the FCC Rules. Operation is subject to the following two conditions: (1) This device may not cause harmful interference, and (2) this device must accept any interference received, including interference that may cause undesired operation.

Note: This equipment has been tested and found to comply with the limits for a Class B digital device, pursuant to part 15 of the FCC Rules. These limits are designed to provide reasonable protection against harmful interference in a residential installation.

5

This equipment generates, uses and can radiate radio frequency energy and, if not installed and used in accordance with the instructions, may cause harmful interference to radio communications. However, there is no guarantee that interference will not occur in a particular installation. If this equipment does cause harmful interference to radio or television reception, which can be determined by turning the equipment off and on, the user is encouraged to try to correct the interference by one or more of the following measures:

- Reorient or relocate the receiving antenna.
- Increase the separation between the equipment and receiver.
- Connect the equipment into an outlet on a circuit different from that to which the receiver is connected.
- Consult the dealer or an experienced radio/TV technician for help.

Note: The Grantee is not responsible for any changes or modifications not expressly approved by the party responsible for compliance. Such modifications could void the user's authority to operate the equipment.

The device has been evaluated to meet general RF exposure requirement. To maintain compliance with FCC's RF exposure guidelines, the distance must be at least 20 cm between the radiator and your body, and fully supported by the operating and installation configurations of the transmitter and its antenna(s).

6

### Warranty & Customer Service

Thank you for purchasing our product. We provide comprehensive after-sales service to ensure you have an excellent user experience. To safeguard your rights, please read the following warranty instructions carefully:

- This product offers a one-year warranty service under non-human factors:
  - Returns and Exchanges: Supported within one month of purchase.
  - Free Repairs: Supported within one year of purchase.
- The warranty does not cover:
  - Damage caused by improper use or unauthorized disassembly of the product.
  - Product malfunctions caused by repairs not authorized by our company.
  - Damage or malfunctions caused by external forces or other human factors.

The warranty period starts from the date of purchase. Please provide proof of purchase when seeking repairs. If proof of purchase is unavailable, the warranty period will be calculated from the manufacturing date.

This product is applied for LOCAL WARRANTY ONLY (valid only in the country/region where you purchase this product), for any warranty services please contact your local dealers directly.

3. For repairs and related inquiries, please contact our service email:  
[support@szjitech.com](mailto:support@szjitech.com)



7