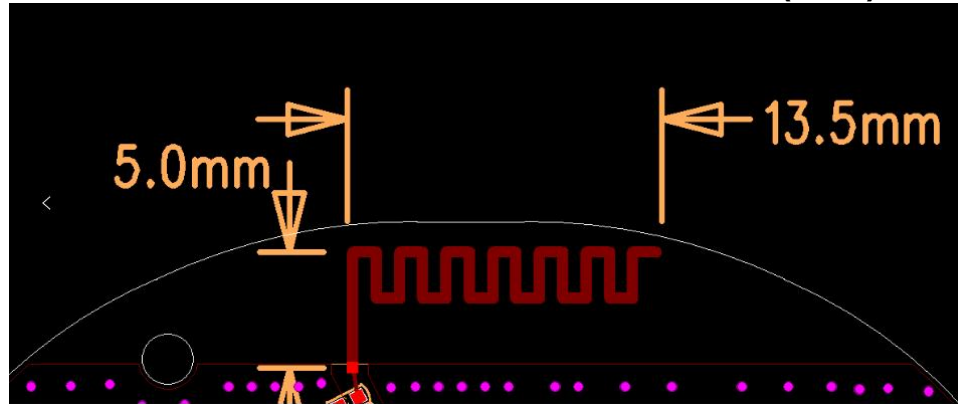


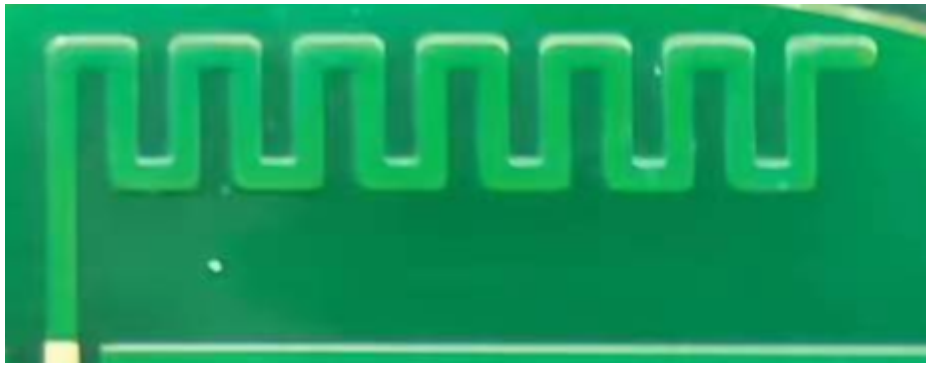
Type_2 Antenna Design Layout Guidelines & Pattern

1. Antenna Mechanical Dimensions (mm):



(Figure .1)

Top-Layer PCB picture



(Figure .2)

2. The PCB board is set as follows: This antenna type is suitable for

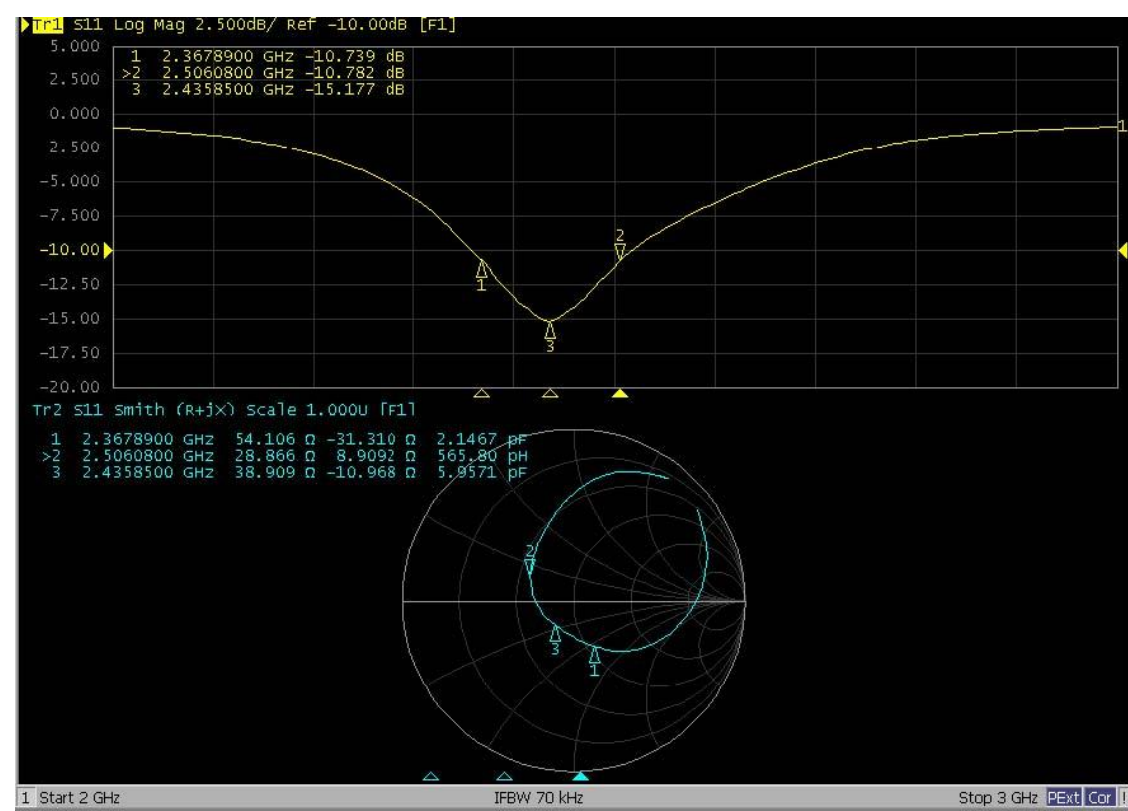
- A. PCB board thickness is _1.0 mm
- B. PCB sheet is _FR4

Manufacturer: Shenzhen InFurture Technology Co., Ltd.

Address: 11-2, Lane 6, Hekan Village, Wuhe Community, Longgang District, Shenzhen City, Guangdong, China

3. The antenna measurement and field shape simulation results are as follows:

* Return Loss / Standing Wave Ratio (VSWR) measurement:

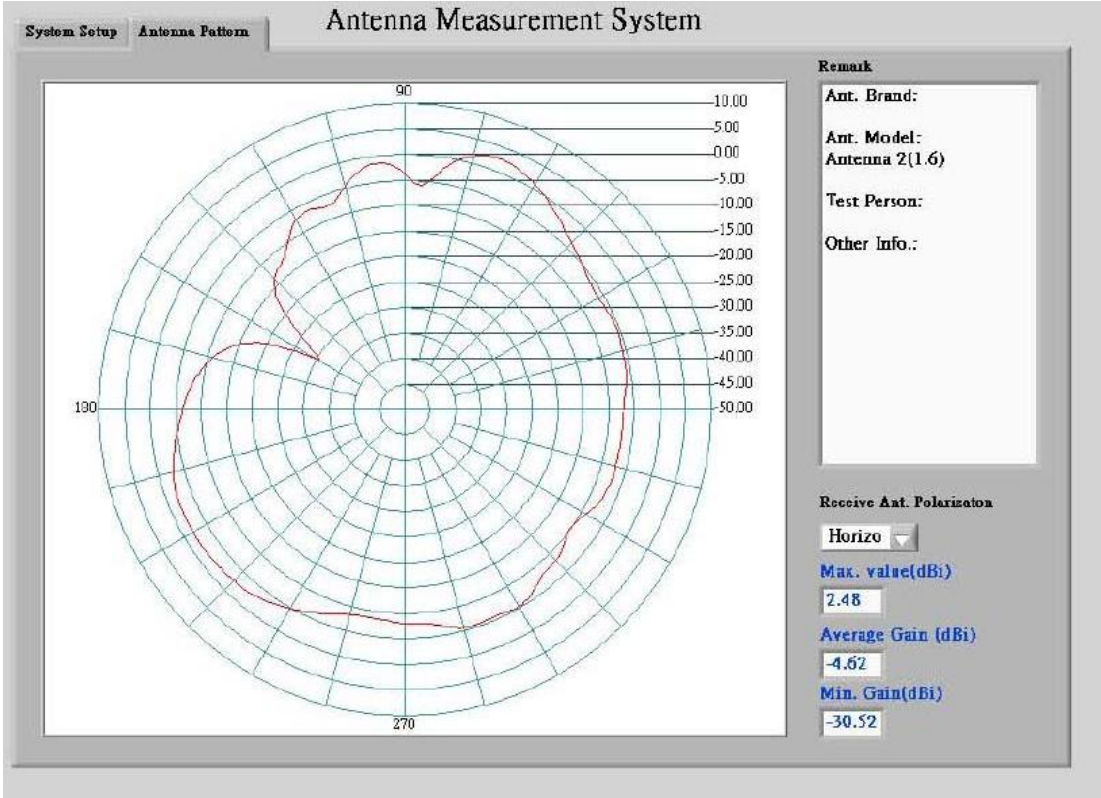


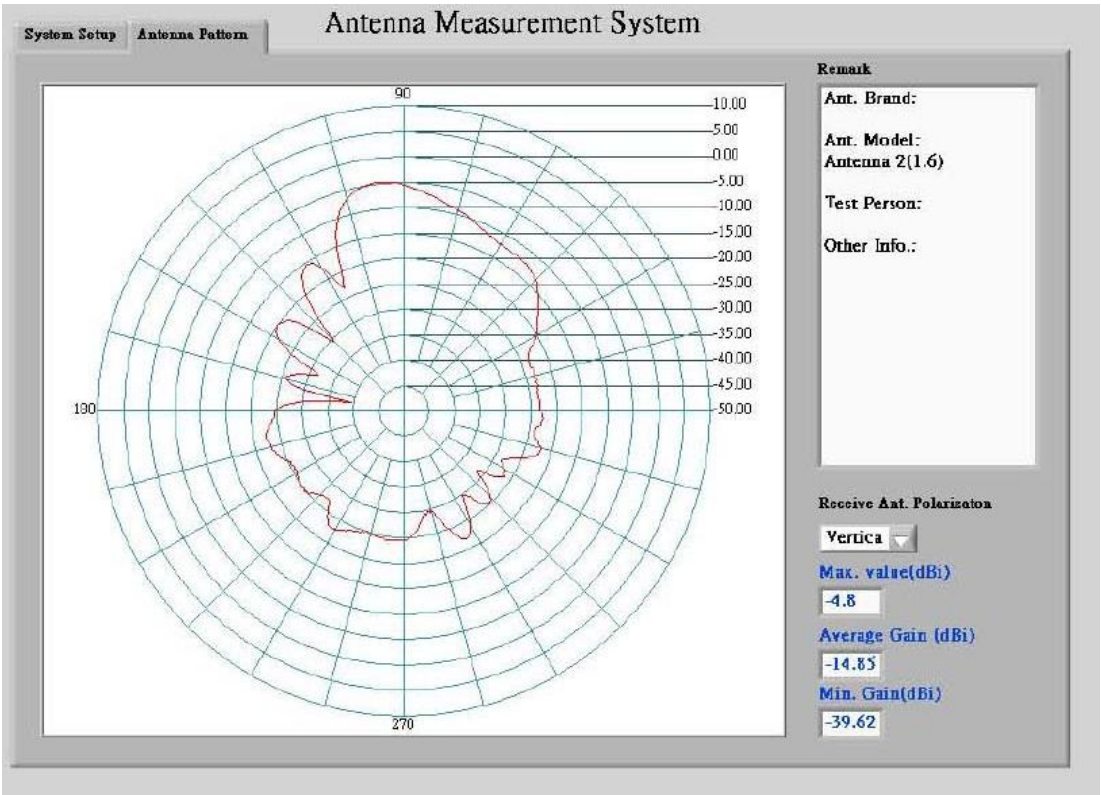
4. Antenna Radiation Patterns:
Summary

ITEM	SPEC.	
Antenna Type	Type_2_Single Wiggle Antenna	
Center Frequency	2400 MHz	2.48 dBi
	2450 MHz	2.82 dBi
	2500 MHz	3.7 dBi
Max. GAIN	3.7 dBi	
Mini. GAIN	- 48.85 dBi	
AVG GAIN	- 4.62 dBi	
DUT Polarization	Horizontal & Vertical	
TEST Output Power Level	10dBm	
Impedance	50 Ω	

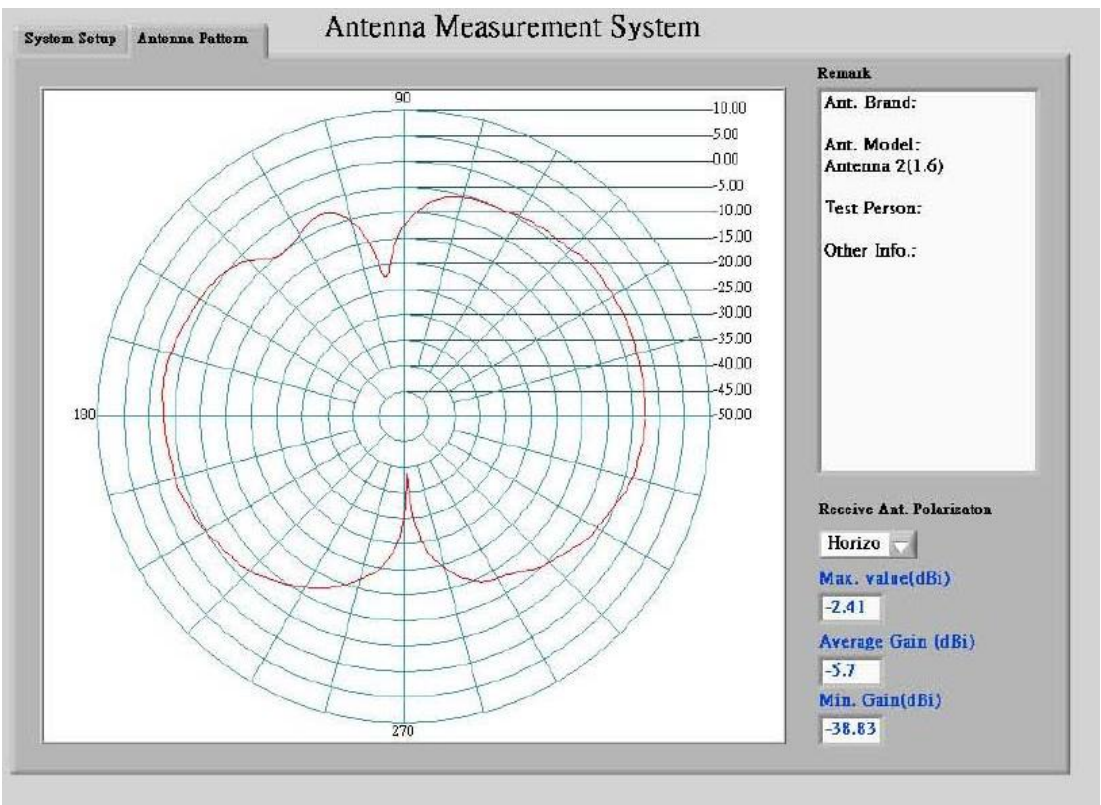
(Table. 1)

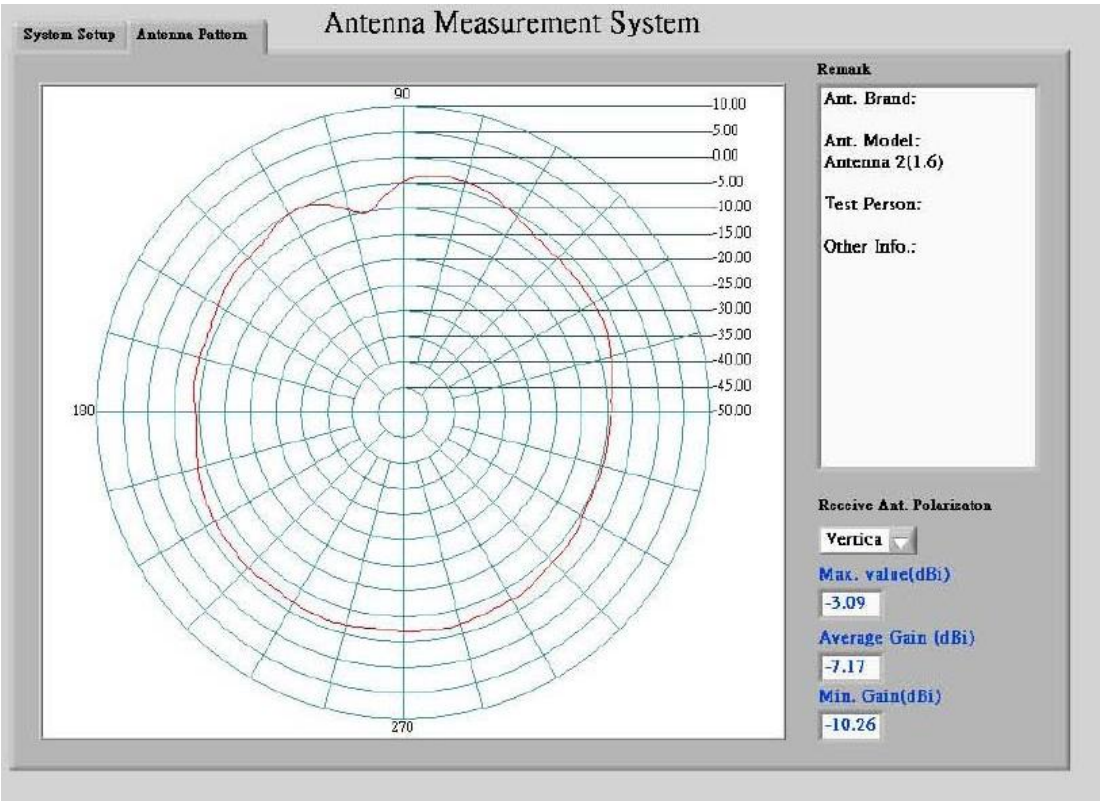
Center Frequency_2400MHz
DUT_ Horizontal



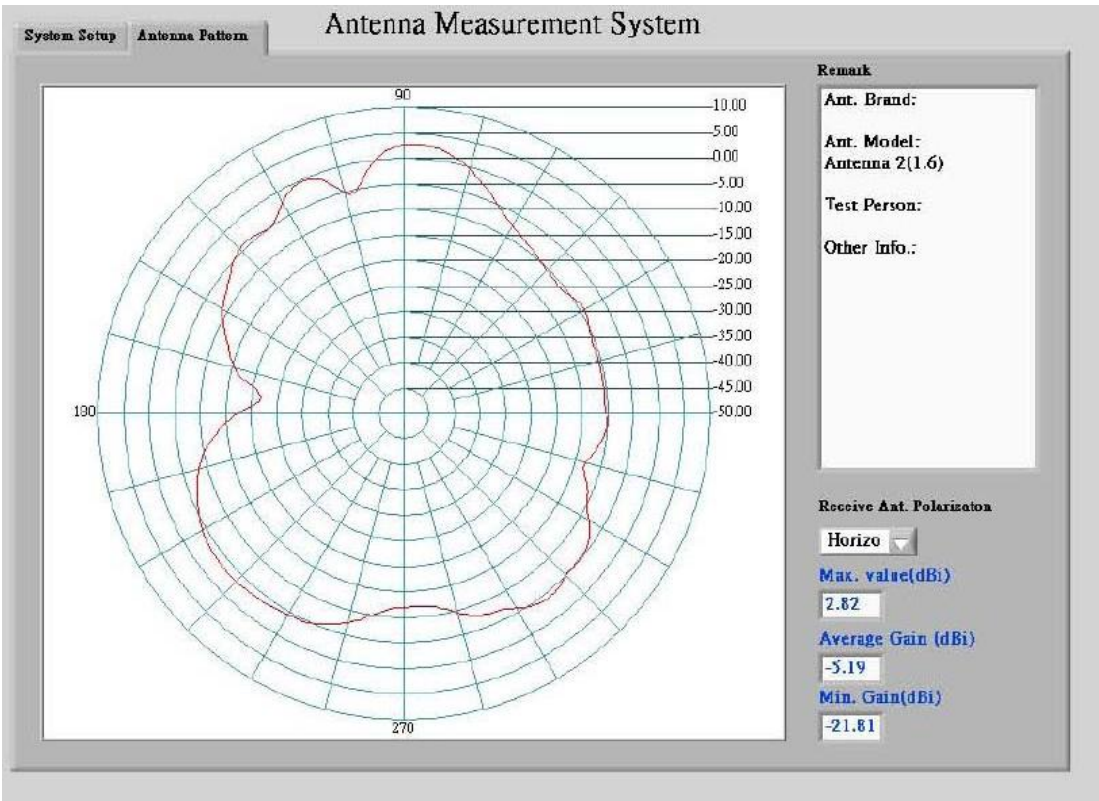


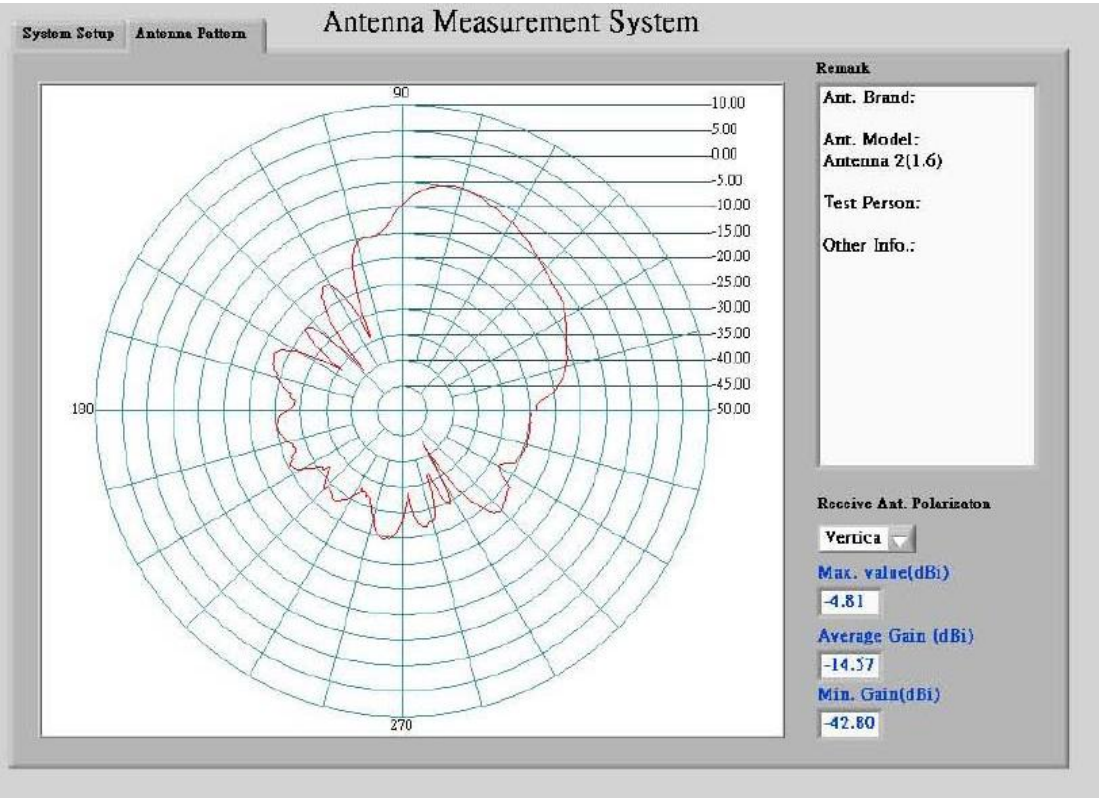
DUT_ Vertical



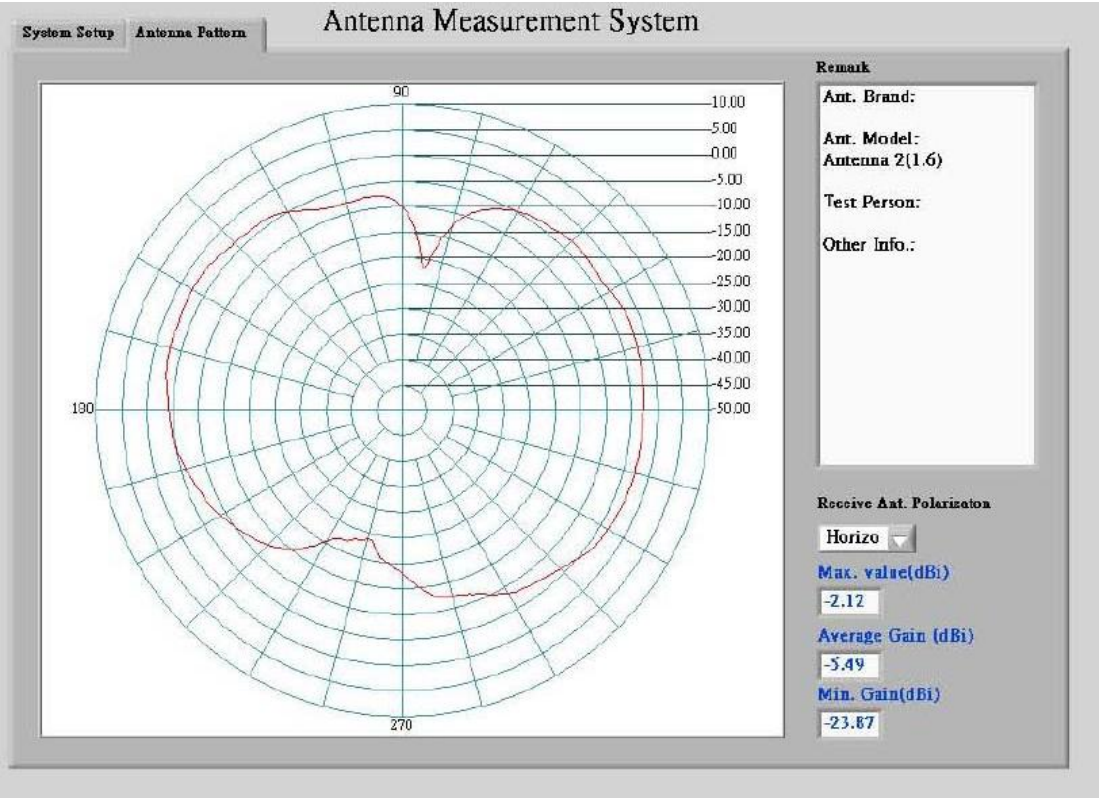


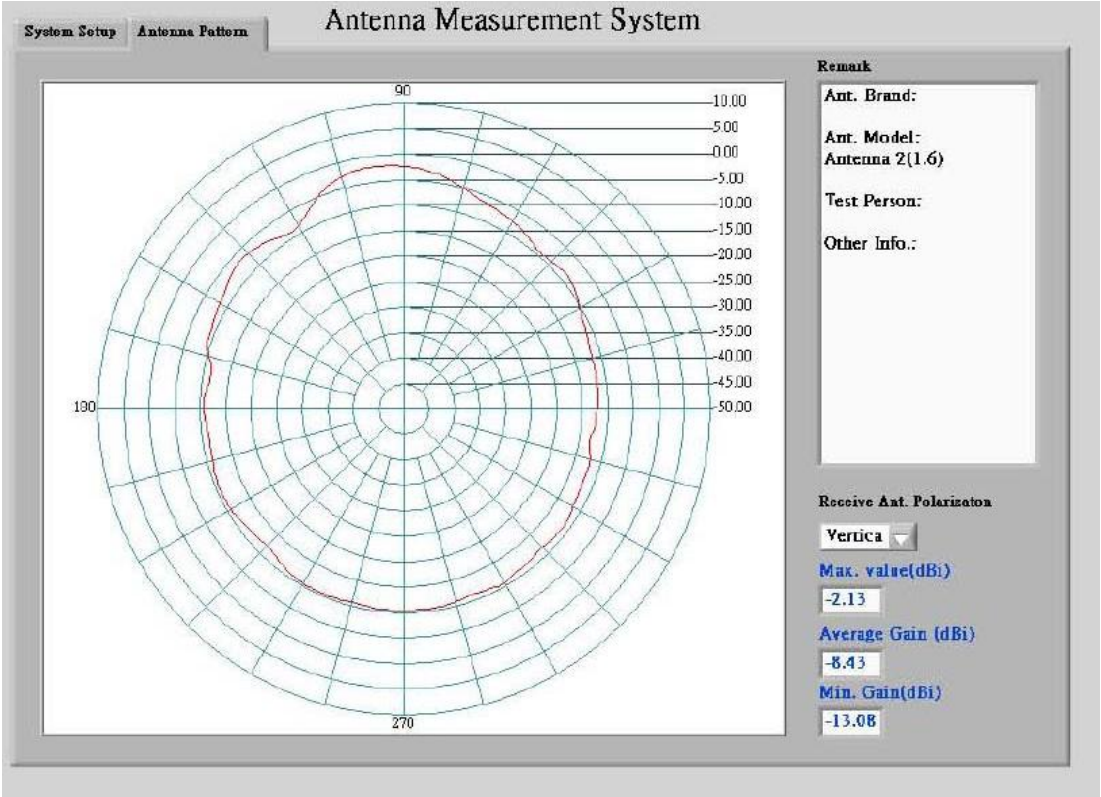
Center Frequency_2450MHz
DUT_ Horizontal



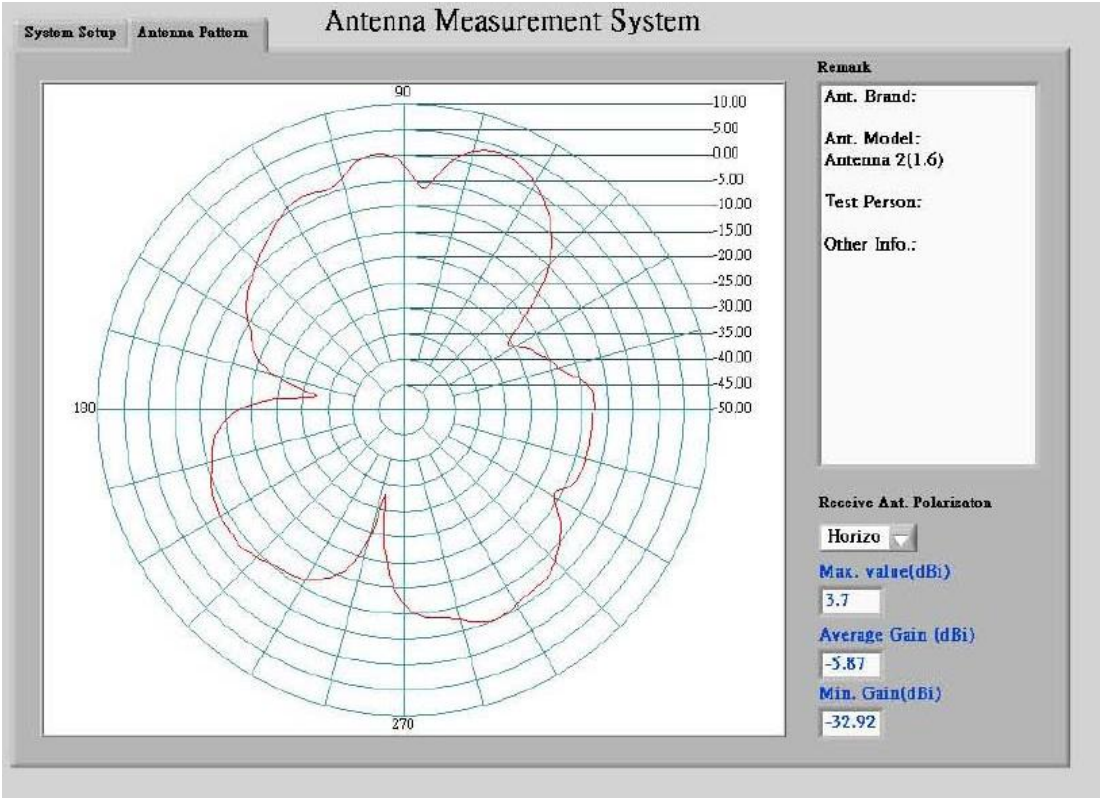


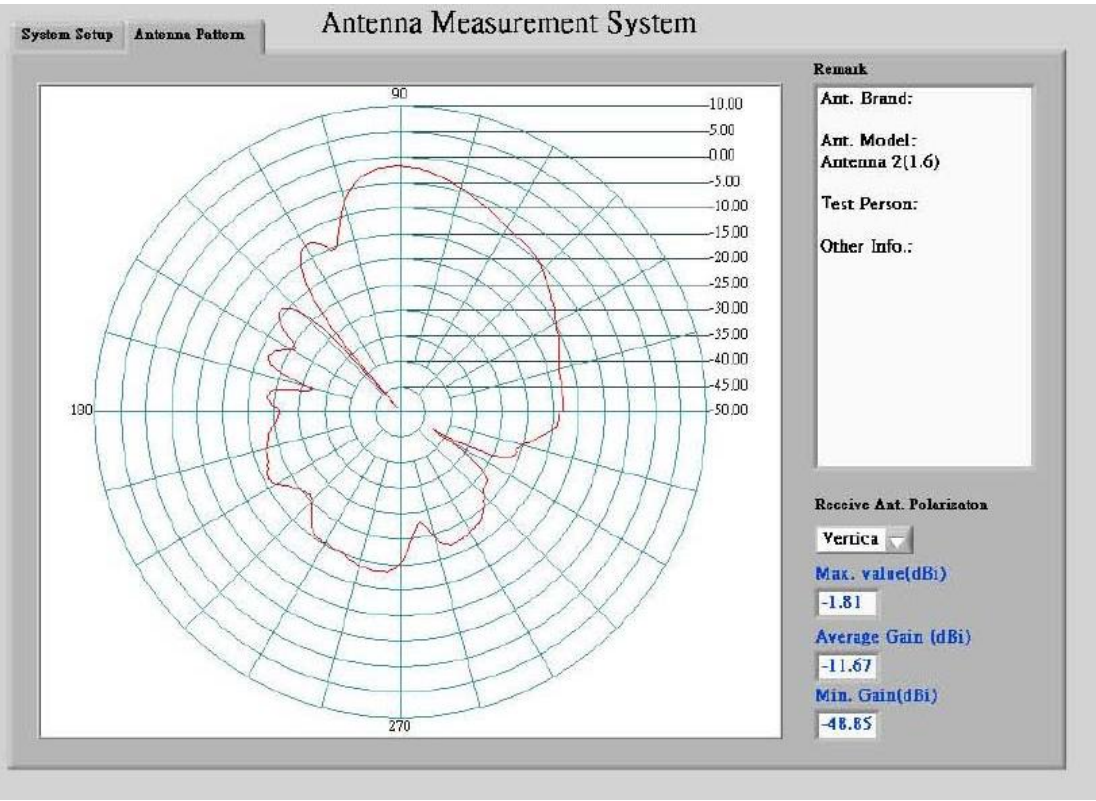
DUT_ Vertical





Center Frequency_2500MHz
DUT_ Horizontal





DUT_ Vertical

