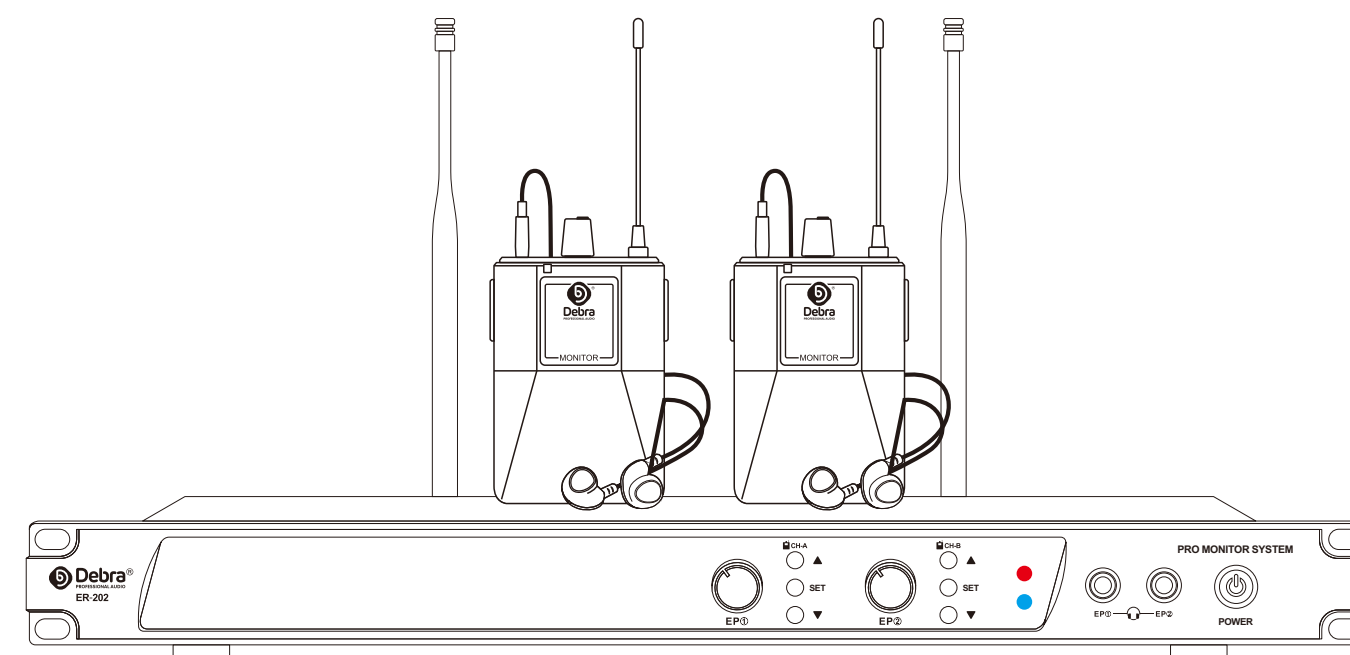




# PROFESSIONAL UHF IN EAR MONITORING SYSTEM



Yin Peng E-commerce Co., Ltd.  
MADE IN CHINA 2020.



Precautions and operation instructions



I'm glad that you have purchased our wireless monitoring system. It will give you an easy-to-use professional monitoring experience. Please read the product description carefully before using it. If you have any questions you don't understand, please contact our [@DebraAudio](#)

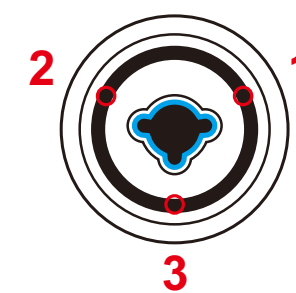
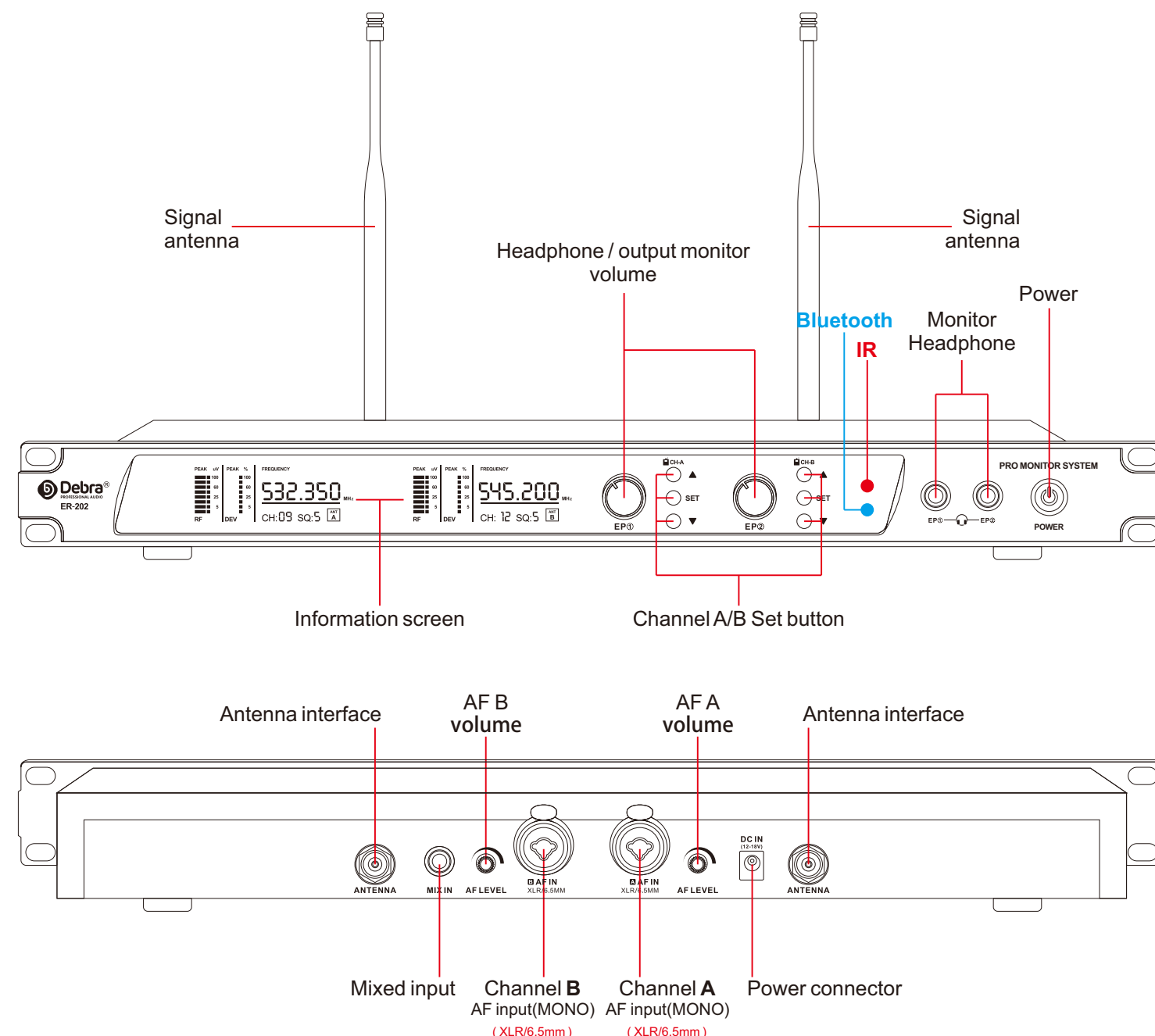
## ER-202 Monitor system parameters

Modulation Method:FM  
 Frequency Range:530-580MHz  
 Sampling Ratio:48KHz  
 Transmission Rate:204.8Kbps  
 Dynamic Range:> 90dB  
 Total Harmonic Distortion:< 0.1%  
 Delay Time of Audio Transmission:< 3ms  
 S/N Ratio:> 96dB  
 Frequency Response:30~20Khz  
 RX Sensitivity:< -94dBm  
 Unique ID Address:YES

## Some tips to improve the performance of the system

- The transmitter and antenna should kept in the relative position of accessibility of the straight line.
- Don't put the receiver close to the radio wave emission source, with magnetic objects or most digital devices(such as the CD player, computer, speaker, wifi etc ).
- Try to place the receiver in height of 1.5 meters from the ground and the position of a distance of 1 meter away from the wall.

## ER-202 monitor system parameters TRANSMITTER FUNCTION

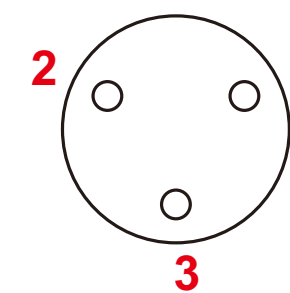


XLR/6.5mm interface input

Balanced use with XLR connectors  
 ○XLR ○6.5mm

- 1=Ground/Shield  
 2=Hot(+ve)  
 3=Cold(-ve)

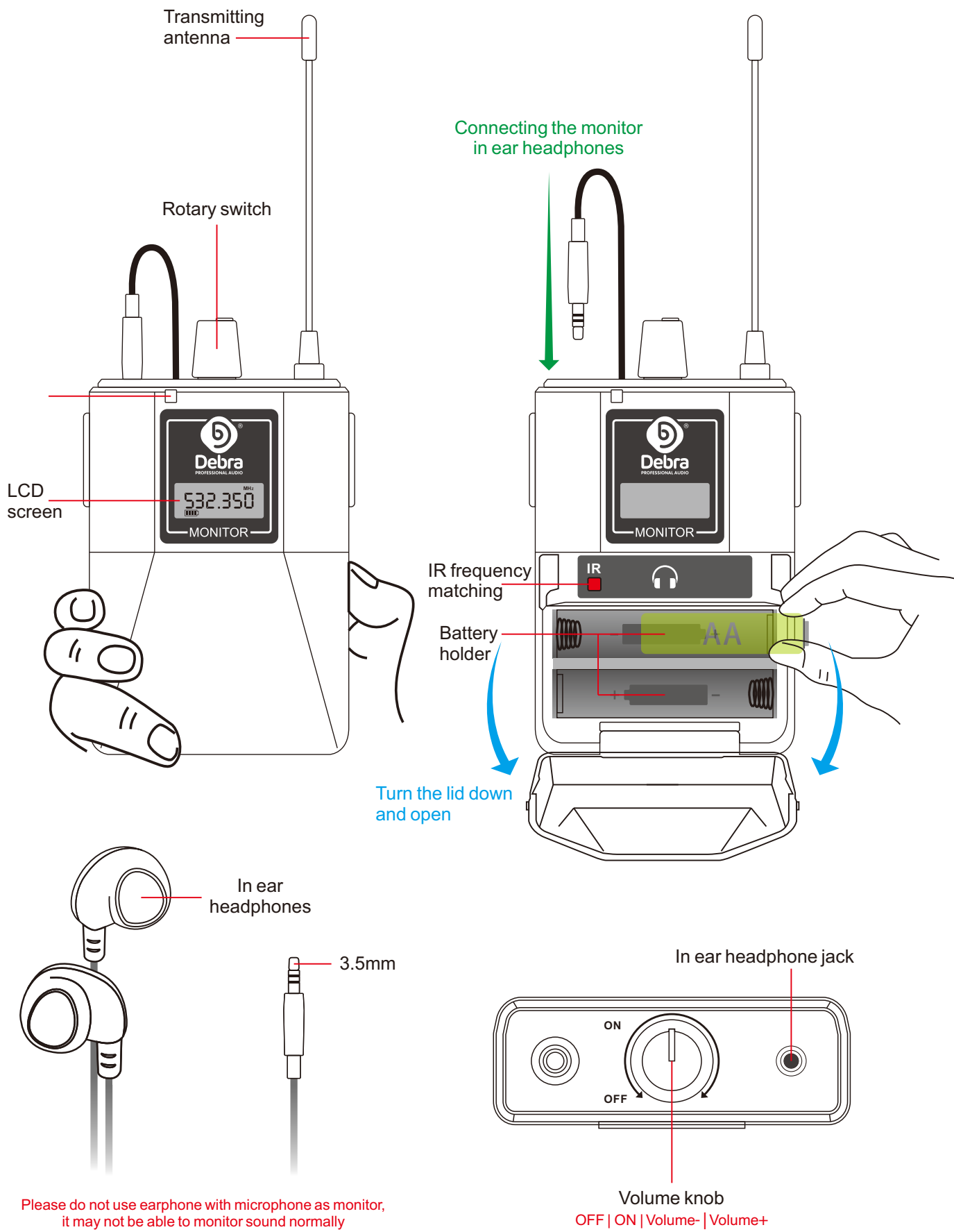
For unbalanced use pin 1 and 3 have to be bridged



output

ER-202 Method used by Monitoring system

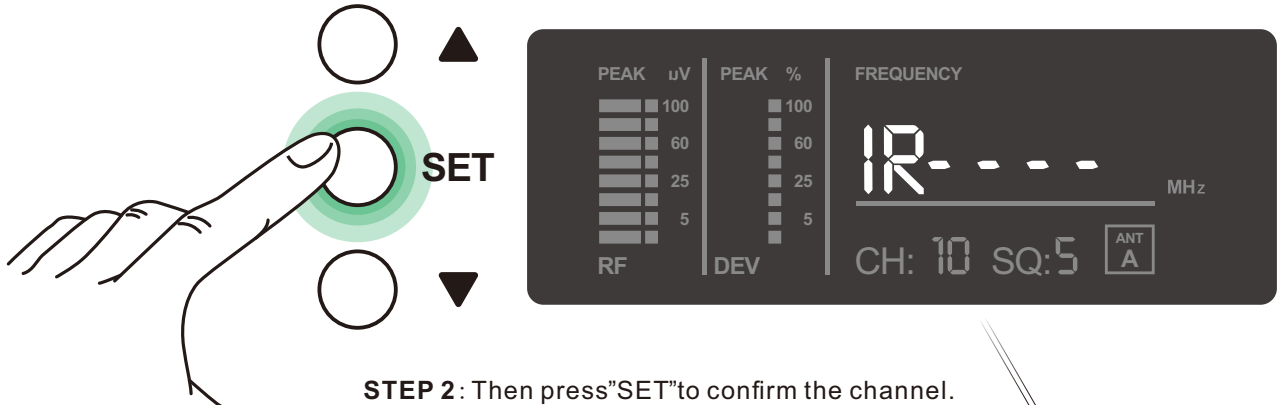
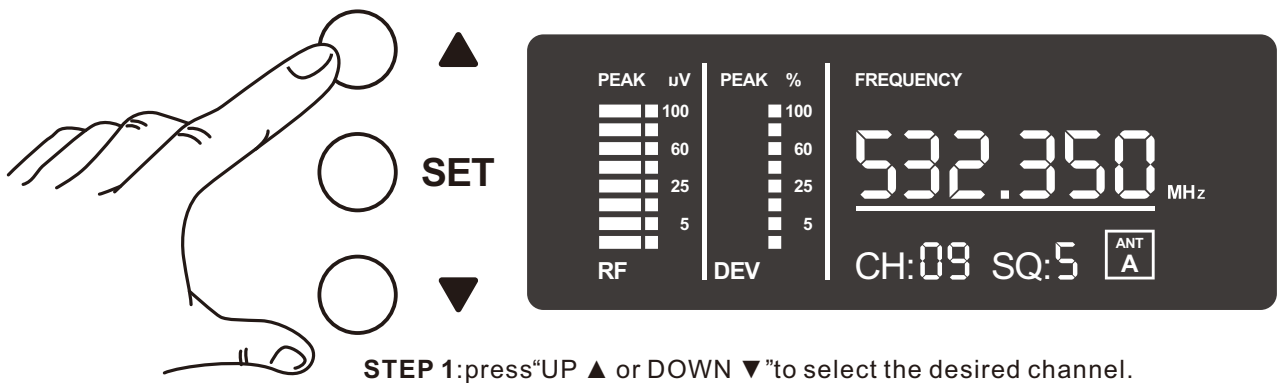
# BODYPACK RECEIVER FUNCTION



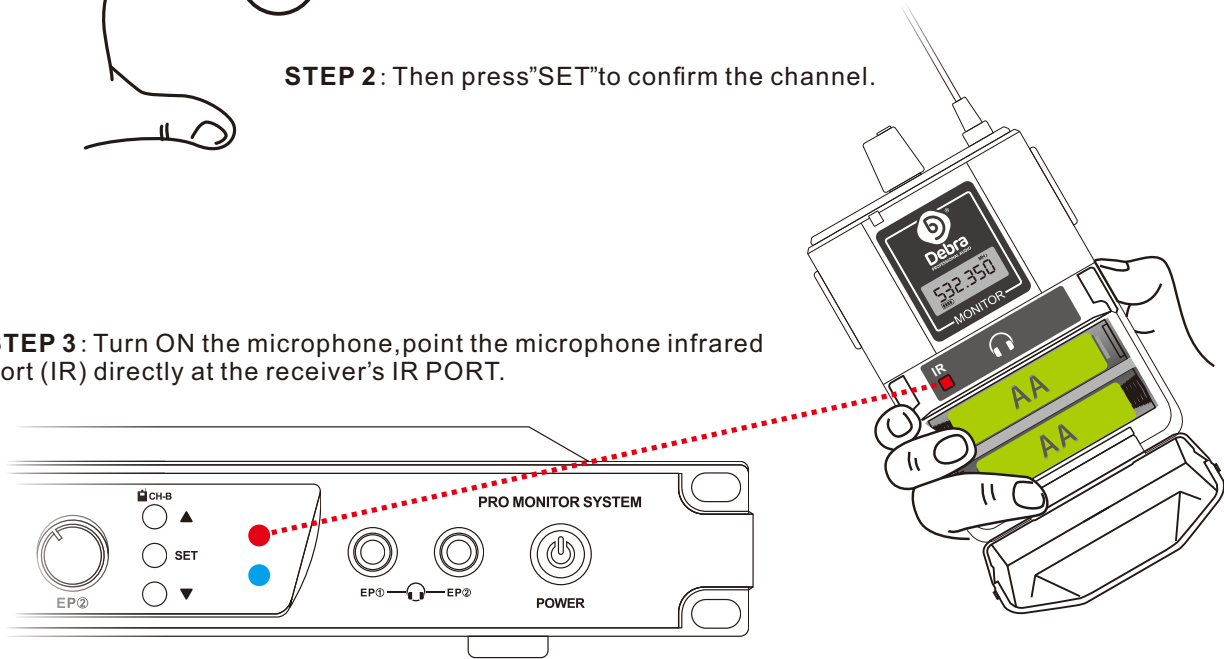
ER-202 Method used by Monitoring system

# BODYPACK RECEIVER FUNCTION

How to select frequencies/channels for the receiver?  
Manual frequency/Channel select



STEP 3: Turn ON the microphone,point the microphone infrared port (IR) directly at the receiver's IR PORT.

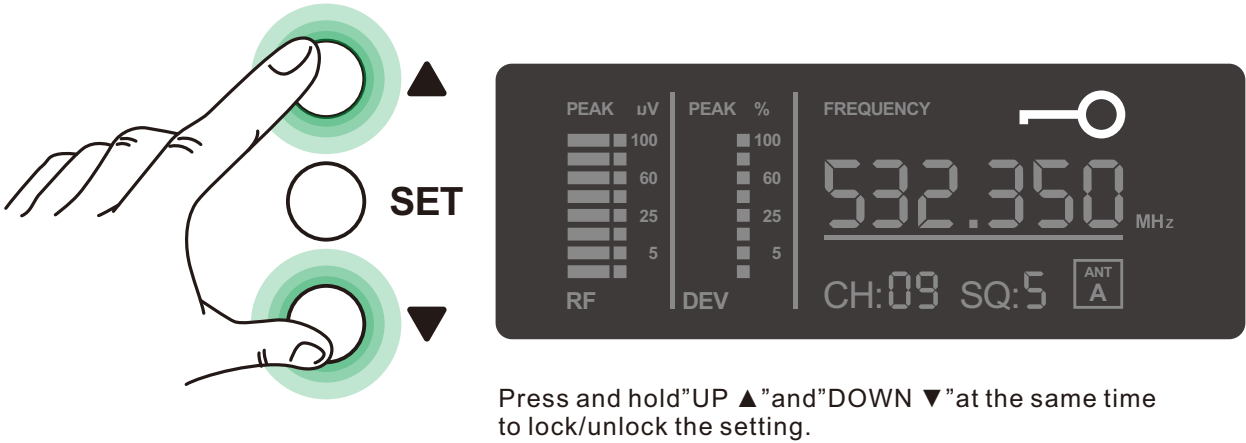


**NOTE:**  
When adjusting the frequency of one receiver, make sure that the other receivers are far away from the transmitter.Before leaving the factory, each unit has been fully tested and appraised by the manufacturer for 3 times. However, depending on the environment, radio signals from other wireless devices may interfere with this device. You can try to change the frequency channel to avoid interference.

# ER-202 Method used by Monitoring system

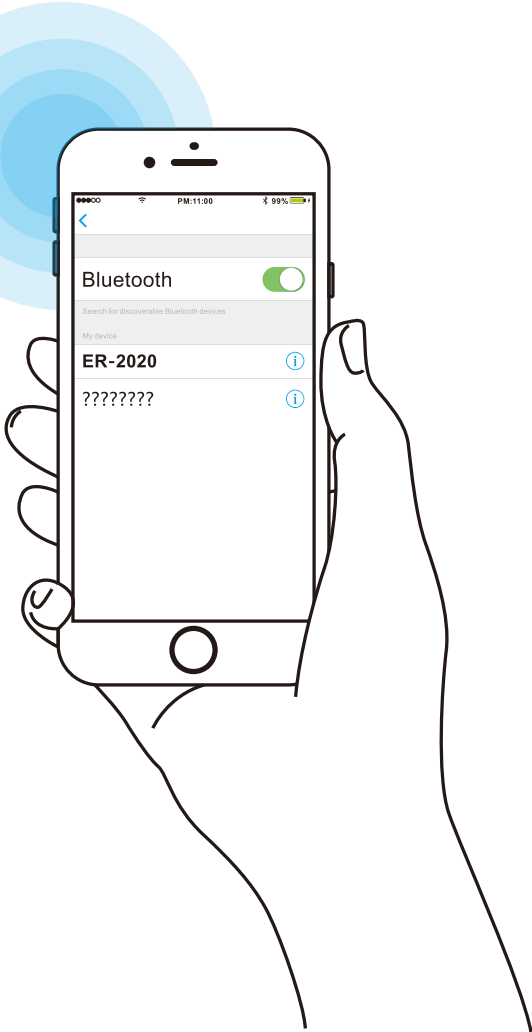
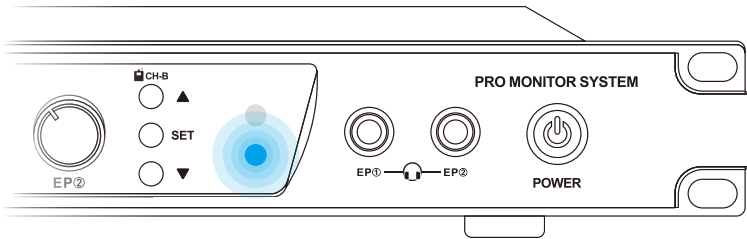
## BODYPACK RECEIVER FUNCTION

### HOW TO LOCK/UNLOCK THE DISPLAY?



### HOW TO CONNECT BLUETOOTH?

First turn on the transmitter of the monitoring system, and the bluelight is flashing. Then turn on the Bluetooth switch of the mobile phone. In the search for a new device, you can view the new device "ER-2020" and connect the device.



## TROUBLESHOOT/STATUS

⚠ Please remove the fault according to the reference suggestions first. Please do not disassemble the equipment for maintenance at will. If you disassemble the equipment without authorization, we will no longer provide maintenance and after-sales service. Thank you for your understanding.

Troubles	Status	Solutions
No sound or weak voice	The receiver LCD display off	<ul style="list-style-type: none"><li>● Turn on the receiver power.</li><li>● Turn on the receiver cover, confirm that the +/- marks on the battery match with the head joint of the treceiver.</li><li>● Install new batteries to replace old batteries.</li></ul>
	Receiver LCD display off	<ul style="list-style-type: none"><li>● Check whether the head of the power adapter is connected to the power outlet.</li><li>● Confirm whether the power adapter is connected to the receiver.</li><li>● Please check whether the power socket is working properly.</li></ul>
	The display of the transmitter shows that there is no RF signal. Receiver signal indicator does not light up	<ul style="list-style-type: none"><li>● Vertically the receiver antenna.</li><li>● Check if there are obstacles between the transmitter and the receiver.</li><li>● Move the transmitter closer to the receiver.</li><li>● Check whether the receiver and transmitter are in the same frequency.</li></ul>
Distortion or excess of burst noise	The display screen of the receiver shows that there is RF signal	<ul style="list-style-type: none"><li>● Lower the maximum volume.</li><li>● Check for interference and eliminate nearby sources of interference (such as CD players, computers, digital devices, earplug monitoring systems, etc.)</li><li>● Check whether the battery is nearly dead, and replace it with a new one.</li><li>● If multiple systems are used together in the same time, the frequency interval between each system can be increased.</li></ul>

This device complies with Part 15 of the FCC Rules. Operation is subject to the following two conditions: (1) this device may not cause harmful interference, and (2) this device must accept any interference received, including interference that may cause undesired operation

NOTE: This equipment has been tested and found to comply with the limits for a Class B digital device, pursuant to Part 15 of the FCC Rules. These limits are designed to provide reasonable protection against harmful interference in a residential installation. This equipment generates, uses and can radiate radio frequency energy and, if not installed and used in accordance with the instructions, may cause harmful interference to radio communications. However, there is no guarantee that interference will not occur in a particular installation.

If this equipment does cause harmful interference to radio or television reception, which can be determined by turning the equipment off and on, the user is encouraged to try to correct the interference by one or more of the following measures:

- Reorient or relocate the receiving antenna.
- Increase the separation between the equipment and receiver.
- Connect the equipment into an outlet on a circuit different from that to which the receiver is connected.
- Consult the dealer or an experienced radio/TV technician for help.

Warning: changes or modifications not expressly approved by the party responsible for compliance could void the user's authority to operate the equipment