

Pet Feeder1

Quick Start Guide

1. Get the App



Download and install the **Arenti** App.



2. Power on the device



Plug your device to an outlet and power on it.

3. Add the device



Follow the App instructions to add the device.

4. Download the user manual



Get detailed user manual and more information by scanning this code with **Arenti** App.
(To access more support information, please visit www.arenti.com.)



You can send an email to support@arenti.com. Describe the camera issue, and inform us of the camera model and SN from the camera body. We will try to reply you in 24h.

Packing list

For pet feeder



Food hopper x1



Main body x1



Top lid x1



Food bowl x1



Stainless steel bowl x1



Power adapter x1



Desiccant x1



Quick guide x1

For water fountain



Drinking tray x1



Tube x1



Filter element x1



Tray x1



Water dispensing tube x1



Pump USB cable x1



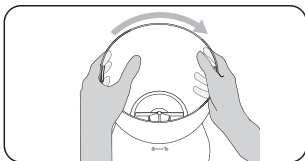
Water bowl x1

Installation

Pet feeder installation

- Install food hopper

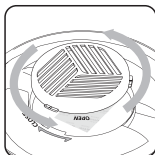
Take out the food hopper and install it by aligning the slot on the base.



- Place desiccant

Open the desiccant box on top lid, tear off the transparent wrapping paper of the desiccant bag, place it into the box and close it.

Note: Please do not tear the inner packaging of the desiccant.



- Plug in power adapter

1. Power adapter supply : plug in the power adapter and connect the power cable into the card slot.

2. Battery power supply : install 4 alkaline "D" batteries and reinstall the battery cover.

Note: Please use safe and standard alkaline batteries. Do not mix batteries of different specifications and models.

- Install the food bowl

Tilt the base unit back slightly, align the buckle of the food bowl with the base unit to install; the same steps to disassemble.

- Fill pet food

Open the top lid, fill fresh dry food into the food hopper and close the top lid.

Note: The device only supports 5-15mm dry pet food.

Water fountain installation

- Pump assembly

1. Place the pump inside the square indentation of the product.

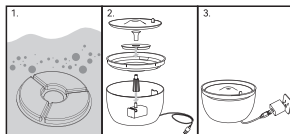
2. Pass the pump USB cable through the water slot.

3. Place the pump USB cable into the groove.



• Install and use

1. Clean the filter with clean water before use to remove dust attached to the surface.
2. Install the water fountain.
3. Connect the power adapter.



Legal notice



Don't throw batteries or out of order products with the household waste (garbage). The dangerous substances that they are likely to include may harm health or the environment. Make your retailer take back the products or use selective collect of garbage proposed by your city.



Hereby, we declare that the radio equipment type **Pet Feeder1** is in compliance with the Directive 2014/53/EU. **Pet Water Fountain** is in compliance with the Directive 2014/30/EU. The full test of the EU declaration of conformity is available at the following Internet address: www.arenti.com/pages/intellectual-property-rights



Safety Information

Power Adapter Safety

- The power plug is intended to serve as a disconnect device. Do not drop or cause an impact to the power adapter.
- If the power cable is damaged (for example, the cord is exposed or broken), or the plug loosens, stop using it at once. Continued use may lead to electric shocks, short circuits, or fire.

- Do not touch the device or the power adapter with wet hands. Doing so may lead to short circuits, malfunctions, or electric shocks.

Child's Safety

- Comply with all precautions with regard to child's safety. Letting children play with the device or its accessories may be dangerous.
- The device and its accessories are not intended for use by children. Children should only use the device with adult supervision.

Operation Requirements

- Use the device under allowed humidity and temperature conditions.
- Do not aim the device at strong light sources (such as lamplight, and sunlight) when focusing it, to avoid reducing the lifespan of the CMOS sensor, and causing overbrightness and flickering.
- Place the device horizontally and securely, tilt, sway or turning upside down are forbidden.
- Do not remove product components other than food bowl and hopper.
- Do not place any foreign object in the pet feeder.
- Please make sure there is no objects on and around the food bowl to prevent pets from eating normally.
- Observe local laws and regulations, and respect the privacy and legal rights of others.

Battery safety

- Do not modify or remanufacture the battery, attempt to insert foreign objects into the battery, or immerse or expose it to water or other liquids, expose to fire, explosion or other hazard.
- Do not use a battery if its case appears damaged, swollen, or compromised. Examples include, but are not limited to, leaking, odors, dents, corrosion, rust, cracks, swelling, melting, and scratches.
- Do not put the battery in trash that is disposed of in landfills. When disposing of the battery, comply with local ordinances or regulations.

Important!

- This product is only applicable to cats and small dogs.
- The desiccant is not edible. If it is damaged, do not use it.
- Do not disassemble the pet feeder other than components as instructed in this operating guide.
- Do not immerse feeder in water, as this may damage electronic components.
- The feeder only supports charging with 5V/2A adapter.
- Do not allow pets to chew on or swallow any parts.
- Do not use the pet feeder for any purpose other than feeding pets.
- Do not touch the camera to avoid the scratches and oil stain.

V1.0 202506

FCC Caution.

This device complies with part 15 of the FCC Rules. Operation is subject to the following two conditions: (1) This device may not cause harmful interference, and (2) this device must accept any interference received, including interference that may cause undesired operation.

Any Changes or modifications not expressly approved by the party responsible for compliance could void the user's authority to operate the equipment.

Note: This equipment has been tested and found to comply with the limits for a Class B digital device, pursuant to part 15 of the FCC Rules. These limits are designed to provide reasonable protection against harmful interference in a residential installation. This equipment generates uses and can radiate radio frequency energy and, if not installed and used in accordance with the instructions, may cause harmful interference to radio communications. However, there is no guarantee that interference will not occur in a particular installation. If this equipment does cause harmful interference to radio or television reception, which can be determined by turning the equipment off and on, the user is encouraged to try to correct the interference by one or more of the following measures:

- Reorient or relocate the receiving antenna.

- Increase the separation between the equipment and receiver.

- Connect the equipment into an outlet on a circuit different from that to which the receiver is connected.

- Consult the dealer or an experienced radio/TV technician for help.

This equipment complies with FCC radiation exposure limits set forth for an uncontrolled environment. This equipment should be installed and operated with minimum distance 20cm between the radiator & your body.

IC Warning:

The device contains licence-exempt transmitter(s)/receiver(s) that comply with Innovation, Science and Economic Development Canada's licence-exempt RSS(s). Operation is subject to the following two conditions:

(1) This device may not cause interference.

(2) This device must accept any interference, including interference that may cause undesired operation of the device.

L'émetteur/récepteur exempt de licence contenu dans le présent appareil est conforme aux CNR d'Innovation, Sciences et Développement économique Canada applicables aux appareils radio exempts de licence. L'exploitation est autorisée aux deux conditions suivantes :

1. L'appareil ne doit pas produire de brouillage;

2. L'appareil doit accepter tout brouillage radioélectrique subi, même si le brouillage est susceptible d'en compromettre le fonctionnement.

This equipment complies with IC radiation exposure limits set forth for an uncontrolled environment. This equipment should be installed and operated with minimum distance 20cm between the radiator & your body.

L'équipement est conforme à la limite d'exposition aux radiations de la IC établie pour un environnement non contrôlé. Cet équipement doit être installé et utilisé avec une distance minimale de 20 cm entre le radiateur et votre corps.