



# Linklemo

## USER MANUAL

Version No.

## Contents

Contents.....	2
Using guiding.....	4
1) Turn on the frame.....	4
2) Selects the language.....	4
3) Configure the network.....	4
4) Download “Linklemo” .....	5
5) Log in register.....	5
6) Add the frame.....	6
7) Upload the photo.....	6
8) Photo manipulation.....	7
9) Share the frame.....	9
10) Photo frame email.....	9
The frame parameter.....	10
Frame menu.....	11
1) Gallery.....	12
2) Settings.....	13
① My frame.....	13
② Slide show.....	13
③ Photo management.....	14

④ Sleeping mode.....	15
⑤ WIFI settings.....	15
⑥ Factory reset.....	15
⑦ Device information.....	16
⑧ Private service.....	16
3) Shut down.....	16
4) Hide.....	17
5) Delete.....	17
6) Fill the fame.....	18
7) Calendar.....	18
8) Clock.....	18

# Using guiding

## 1) Turn on the frame

charge on the frame , press the button to turn on

## 2) Selects the language

After turning the camera, Users selects the language of the photo frame according to the prompt of the photo frame



## 3) Configure the network

After selecting the language user need to configure the photo frame network, and downloads the “Linklemo” APP . Then click Next to go to Users guide step 4.



## 4) Download “Linklemo”

Users can search “Linklemo” in iTunes App Store or Google Play to download and install APP .





## 5) Log in register

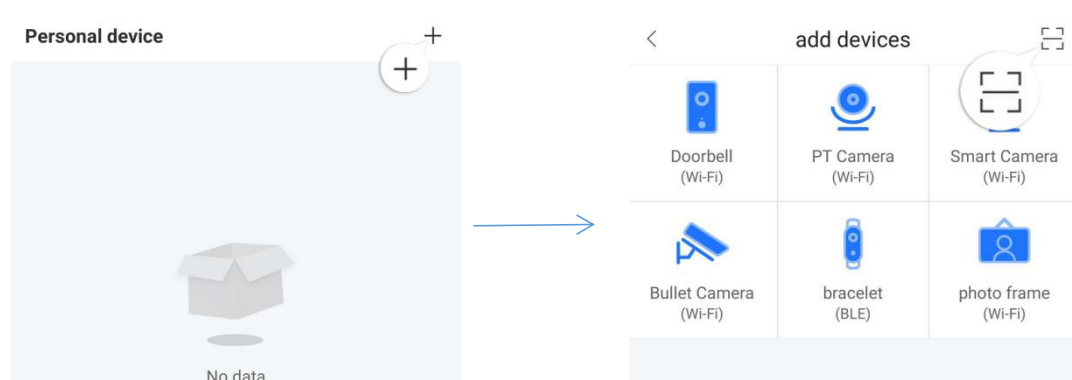
Users open the “Linklemo”APP to login register through mobile phone number, at the same time ,users can also use Wechat and Alipay for the third-party login

The image shows two side-by-side screenshots of the Linklemo mobile application interface. The left screenshot displays the login screen with the Linklemo logo at the top. Below the logo, there are input fields for "Region" (set to "China +86"), "Account" (placeholder "Phone number / Email"), and "Password" (placeholder "6-16 digits, letters, symbols"). A blue "Login" button is at the bottom. Below the button are links for "Register" and "Forgot Password", and icons for WeChat and Alipay. At the very bottom, there is a checkbox labeled "Read and agree" followed by links to "Service Agreement" and "Privacy Statement". The right screenshot displays the registration screen with the title "Register" and the subtitle "Welcome to join us". It has similar input fields for "Region", "Account", and "Password". Additionally, it includes a "Code" field with the placeholder "A verification code" and a "SEND CODE" button. A blue "Confirm" button is at the bottom.

## 6) Add the frame

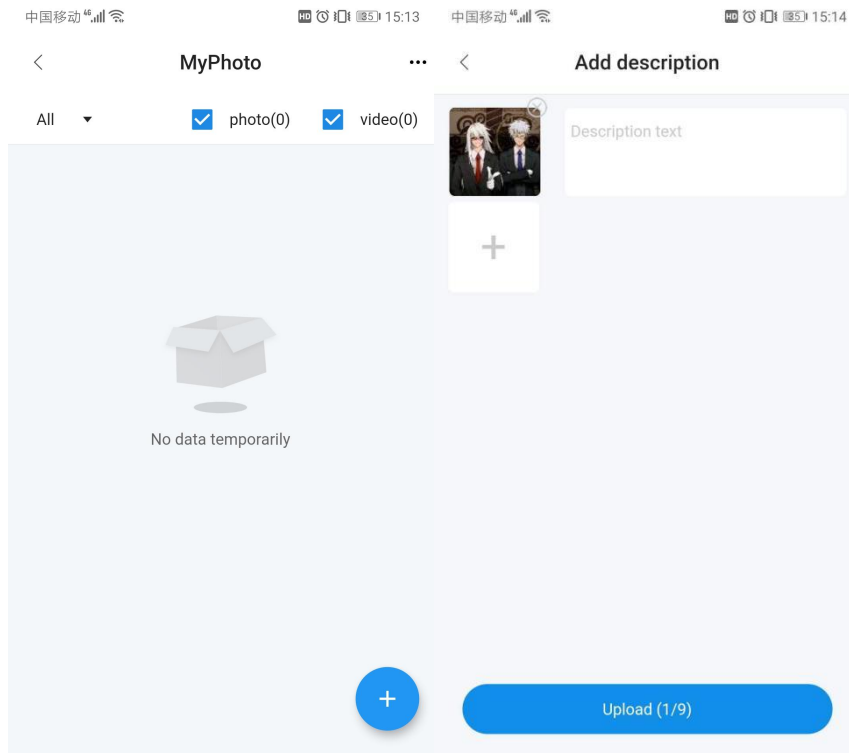
After login , users enter the homepage , click  to enter the adding

device page , click  photo frame (Wi-Fi) or click  to scan the QR code of the photo frame to add a photo frame



## 7) Upload the photo

After Users adds the device, click the photo frame to enter the photos frame and start using it . Click to enter to add photos or videos . No more than 9 videos or photos can be uploaded at a time , and length of the video cannot exceed 15 seconds. After select a photo or video, Users can add a description to it



## 8) Photo manipulation

All, hidden, and display filtering: users can filter the hidden and displayed status of the photo frame

Photo and video filtering: users can view the number of photos and videos in the frame, and can only watch photos or videos

Preview: Users clicks on a photo or video to enter the preview state. The preview only obtains the thumbnail of the photo or video, and the video in the preview state cannot be played.



edit

Edit : In the preview state, Users can click to edit the description of the photo or video



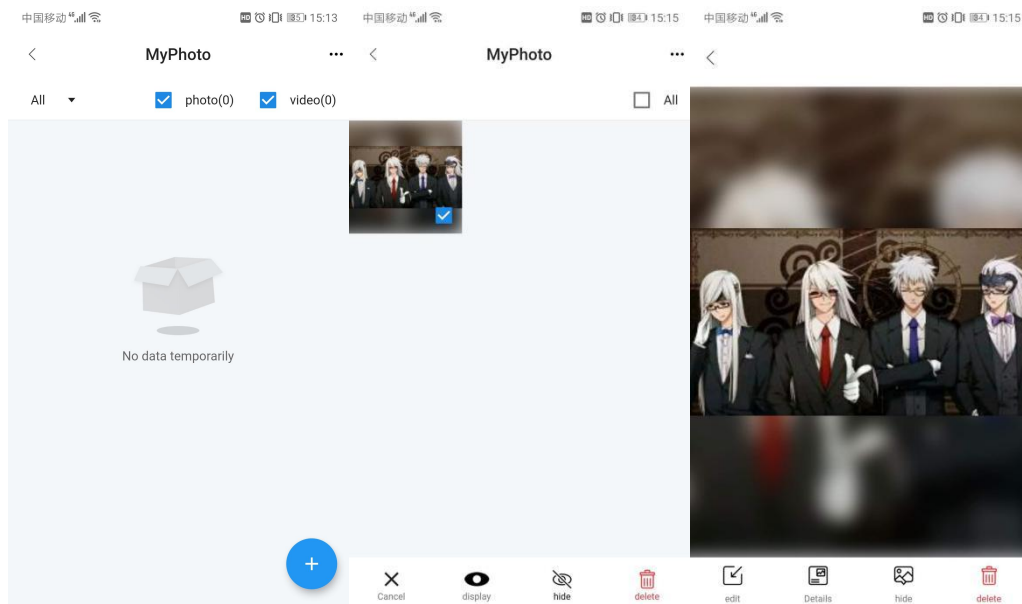
Details

Details: In the preview state, Users can click to view the location, creation time and file size of the photo or video

Hide/Show: In the preview state, Users can click to hide or show the photo or video. The button action is determined according to the current hidden or displayed state of the photo or video.

Delete: In the preview state, Users can click to delete the photo or video directly from the frame

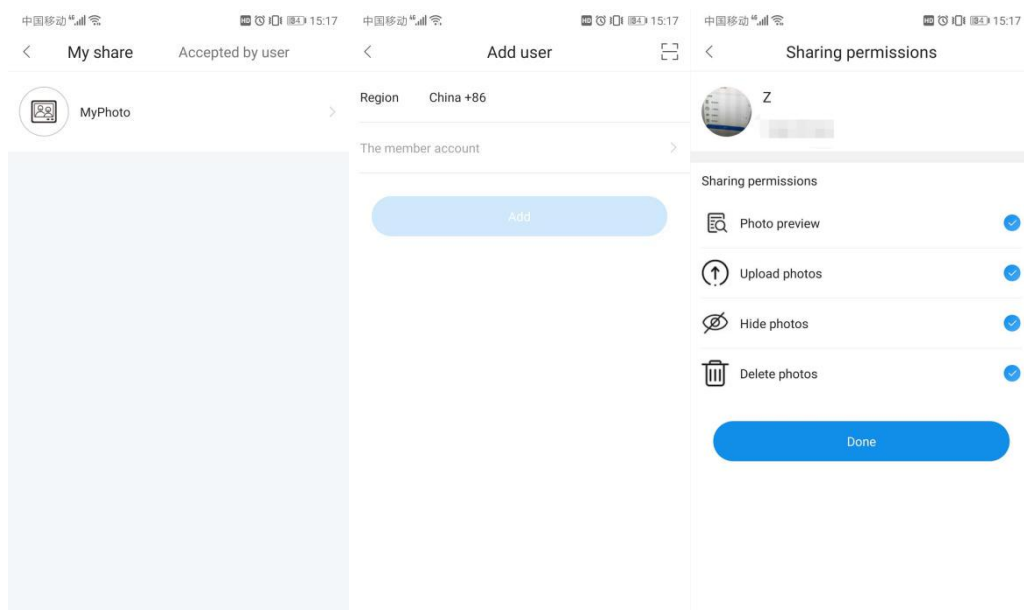
Batch operation: users long press photos or videos to enter batch operation mode, and users can select multiple photos to hide, show or delete in batches





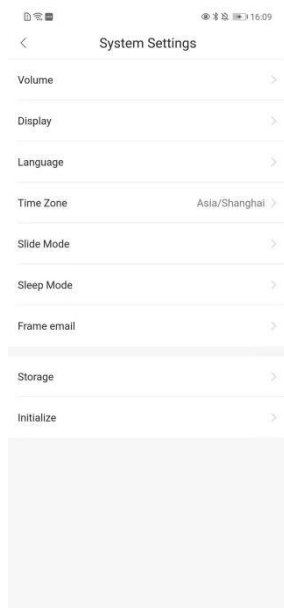
## 9) Share the frame

Users can click "My"->"Share Management" to add their own photo frames to others for use by adding or scanning codes. When choosing to share, set permissions to limit the functions that can be used by the shared person.

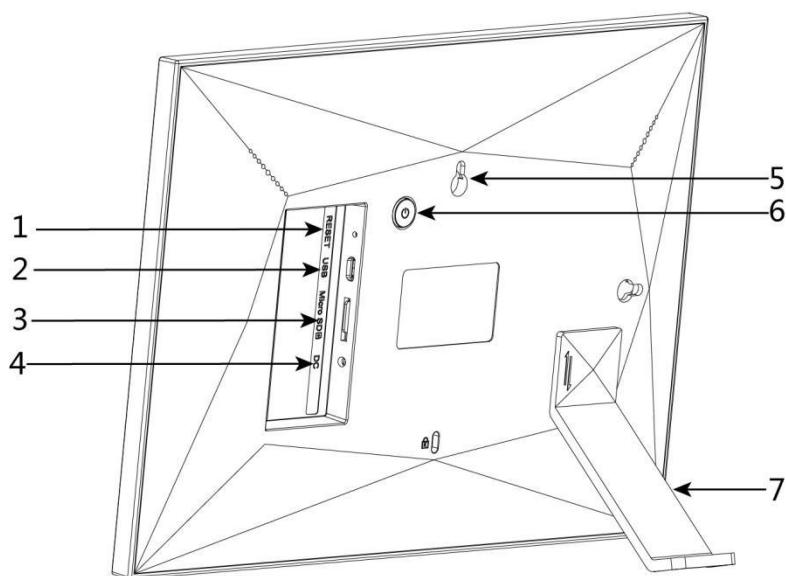


## 10) Photo frame email

Users can click "Settings">"System Settings">"Frame email" to set the email to which the frame belongs. And then users can upload photos to the frame by sending them to the email.



## The frame parameter



Number	Functions
1	Restart Button
2	USB Interface
3	SDcard Socket
4	Power Connector
5	Hang wll Hole
6	ON/OFF Button
7	Support Rod

## Frame menu

After users opens the photo frame, click on the screen, the photo frame will display a menu

Gallery: Users enter the gallery to manage photos and videos in the photo frame in batches

Setting: Users enters the frame setting page to set the frame

Shutdown: Users shuts down, restarts, and sleeps the photo frame

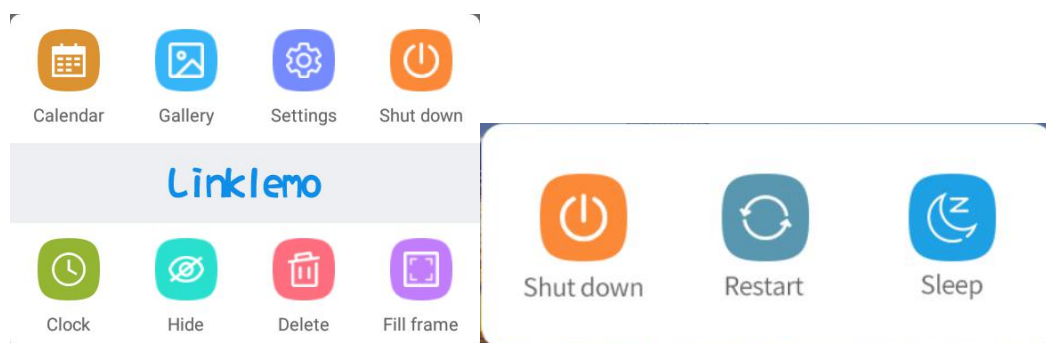
Hide: Users can directly hide the currently previewed photo or video

Delete: Users can directly delete the currently previewed photo or video

Fill frame: Users fills or adapts the currently previewed photo or video to the frame



Calendar: Users can access the calendar to view the date

Clock: Users can access the clock to check the time



## 1) Gallery

Hide, show

Users can click  the button of a photo or video to show or hide the current photo or video, and click  the button to exit the gallery.



放假和好友去都江...  
2020.05.02



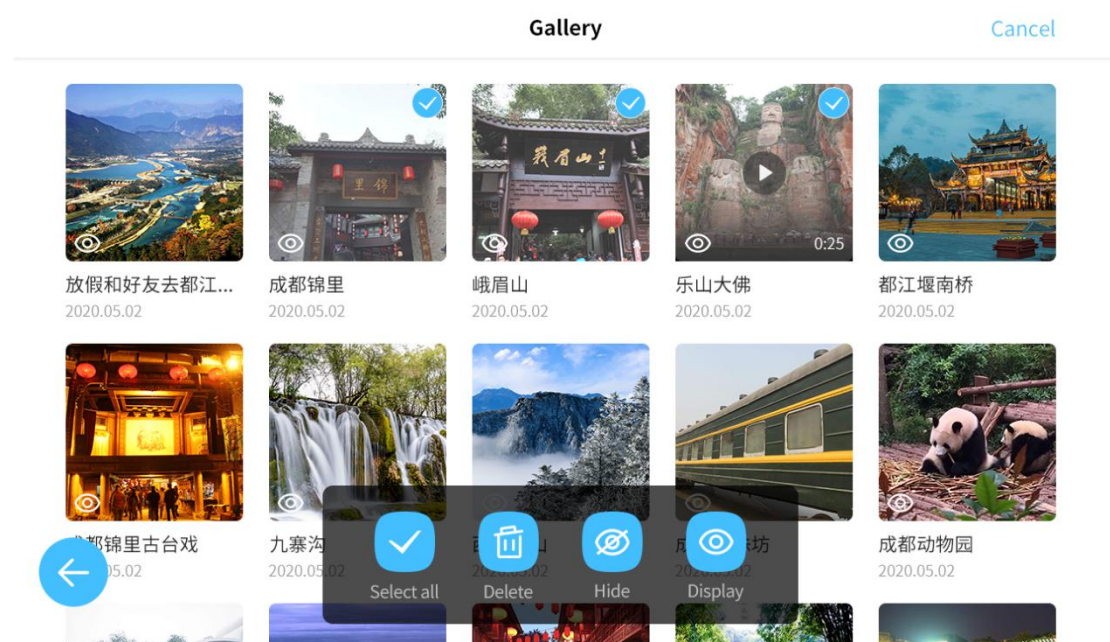
成都锦里  
2020.05.02



峨眉山  
2020.05.02

Batch operation

Users clicks "Select" in the upper right corner of the gallery to enter the batch operation mode, and Users can perform batch operations on photos or videos. Click "Cancel" in the upper right corner again to exit the batch operation mode. Click the button to exit the gallery.



## View

Users can click on a photo or video in the gallery to view the photo or video directly

## 2) Settings

### ① My frame

Frame name: users can set the frame name according to their own preferences

Frame language: Users can set the language supported by the frame.

Currently supports Chinese and English

Set time zone: users can set the current time zone of the photo frame

Date format: Users can set the format of the frame date display, there are 24-hour format and 12-hour format

### ② Slide show

Slide show: Users can set whether the photo frame will play a slide show

Display settings: Users can set whether to display the description of the photo or video and whether the photo or video is filled into the frame

Human body induction: Users can set the human body induction time.

Human body sensing means that the photo frame automatically sleeps

after a period of time without sensing the human body

Brightness: users can set the current brightness of the photo frame

Volume: Users can set the volume of the photo frame

Switching interval: Users can set the switching interval between each slide when the photo frame is playing a slideshow


Switch mode: Users can set the switch mode of the photo frame to play the slideshow, currently supports time sequence and random

Switching effect: Users can set the switching effect of the photo frame to play the slideshow, currently supports smooth, windmill, zoom, and flip

### ③ Photo management


Memory display: users can view the current internal storage space of the photo frame, as well as the number of photos and videos

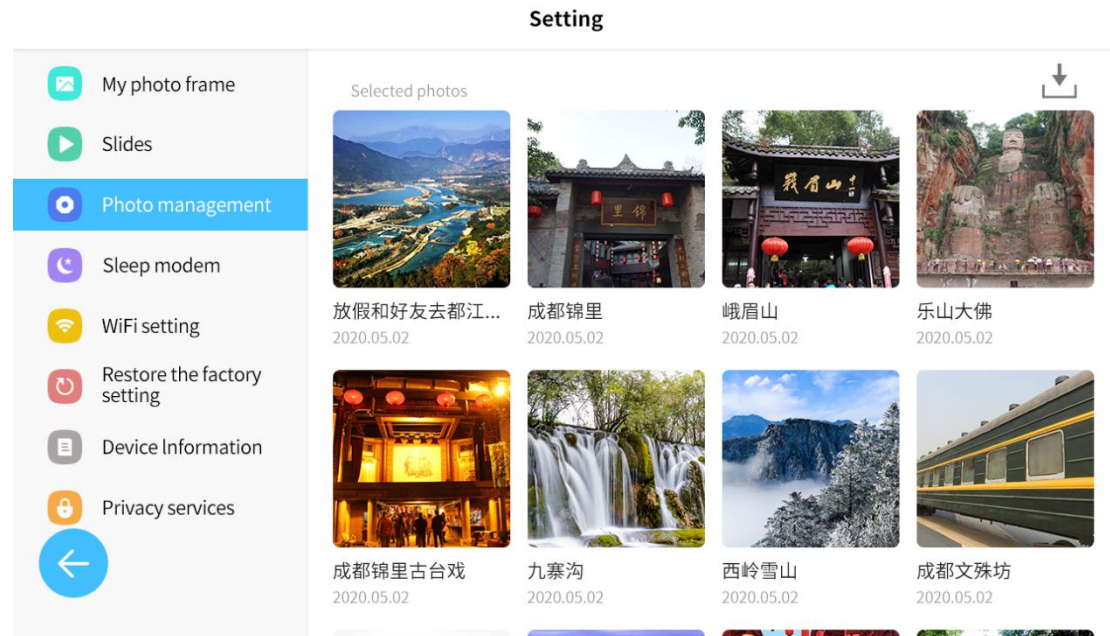
Import photos: Users need to insert an external TF card, and the photos or videos in the external TF card can be imported into the photo frame.

Users clicks "Import Photos", selects the photos to be imported into the photo frame, and clicks  the button in the upper right corner to import.

Export photos: Users need to insert an external TF card, and the photos or videos in the photo frame can be exported to an external TF card.

Users clicks "Export Photos", selects the photos to be exported to the

external TF card, and clicks the button  in the upper right corner to export.



#### ④ Sleeping mode

Users can set the device to sleep within a specified time period

#### ⑤ WIFI settings

Users can set the photo frame network here. We will save the previously set network, click to connect directly

#### ⑥ Factory reset

Users can click "Restore Factory Settings" to reset the device

## ⑦ Device information

Users can view the device QR code, device ID, device model and firmware version.




The device QR code and device ID are used to scan the device QR code or input the device ID when Users adds the device through the "Linked Me" APP

Firmware version: When the photo frame has a new firmware version, a small red dot will appear at the firmware version, and Users can click "firmware version" to upgrade the firmware

## ⑧ Private service

Users can view the privacy agreement and service statement of the photo frame

## 3) Shut down

Users click on  Shut down to enter the shut down page . Click on  Shut down to shut down the frame . Click on  Restart to restart the





Shut down

frame devices . Click on to

immediately put the photo frame into sleep mode.

#### 4) Hide



Hide

Users click on to hide the current photo and video



Sleep

#### 5) Delete

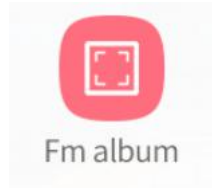


Delete

Users click on to delete the current photo and video.

## 6) Fill the fame

Users click on



to fill the current photo or video into the

frame . If the current photo or video is already in the state of filling the frame , the button state will change to fit to the frame , click it to make the current photo or video fit to the frame

## 7) Calendar

Users click the "Calendar" button to enter the calendar page and view the calendar. Slide left and right to switch months and click the "Back" button to appear on the screen

## 8) Clock

Users click the "Clock" button to enter the clock page. Click the "Back" button to appear

This device complies with Part 15 of the FCC Rules. Operation is subject to the following two conditions: (1) this device may not cause harmful interference, and (2) this device must accept any interference received, including interference that may cause undesired operation

NOTE: This equipment has been tested and found to comply with the limits for a Class B digital device, pursuant to Part 15 of the FCC Rules. These limits are designed to provide reasonable protection against harmful interference in a residential installation. This equipment generates, uses and can radiate radio frequency energy and, if not installed and used in accordance with the instructions, may cause harmful interference to radio communications. However, there is no guarantee that interference will not occur in a particular installation.

If this equipment does cause harmful interference to radio or television reception, which can be determined by turning the equipment off and on, the user is encouraged to try to correct the interference by one or more of the following measures:

- Reorient or relocate the receiving antenna.
- Increase the separation between the equipment and receiver.
- Connect the equipment into an outlet on a circuit different from that to which the receiver is connected.
- Consult the dealer or an experienced radio/TV technician for help.

Warning: changes or modifications not expressly approved by the party responsible for compliance could void the user's authority to operate the equipment

#### Radiation Exposure Statement

This equipment complies with FCC radiation exposure limits set forth for an uncontrolled environment. This equipment should be installed and operated with minimum distance 20cm between the radiator and your body.