

CASE MATERIAL: GLASS REINFORCED PLASTIC
FACE MATERIAL: POLYCARBONATE
COLOUR: CLEAR
THICKNESS: 3MM

THIS LABEL IS LOCATED ON THE FRONT FACE OF THE DCT150M-W AND IS PERMANENTLY SCREEN PRINTED ON THE UNDERSIDE OF THE CLEAR POLYCARBONATE FACE SO THAT IT IS PROTECTED AND CLEARLY VISIBLE

HATCHED AREAS TO BE KEPT CLEAR FOR DISPLAY SCREEN AND SERIAL NUMBER VIEWING

LOWER HATCHED AREA SHOWS MODEL AND SERIAL NUMBER INFO. MODEL NUMBER (DCT150M-W), YEAR (2 DIGIT), MONTH (2 DIGIT), SERIAL NUMBER (5 DIGIT) EG: DCT150M-W YYMM12345

REFER TO SEPARATE FILE FOR ART WORK REQUIREMENTS

REV 02 CHANGES
CONTROLLED DRAWING STATEMENT ADDED

REV 03 CHANGES
CERTIFICATION REFERENCES AMENDED

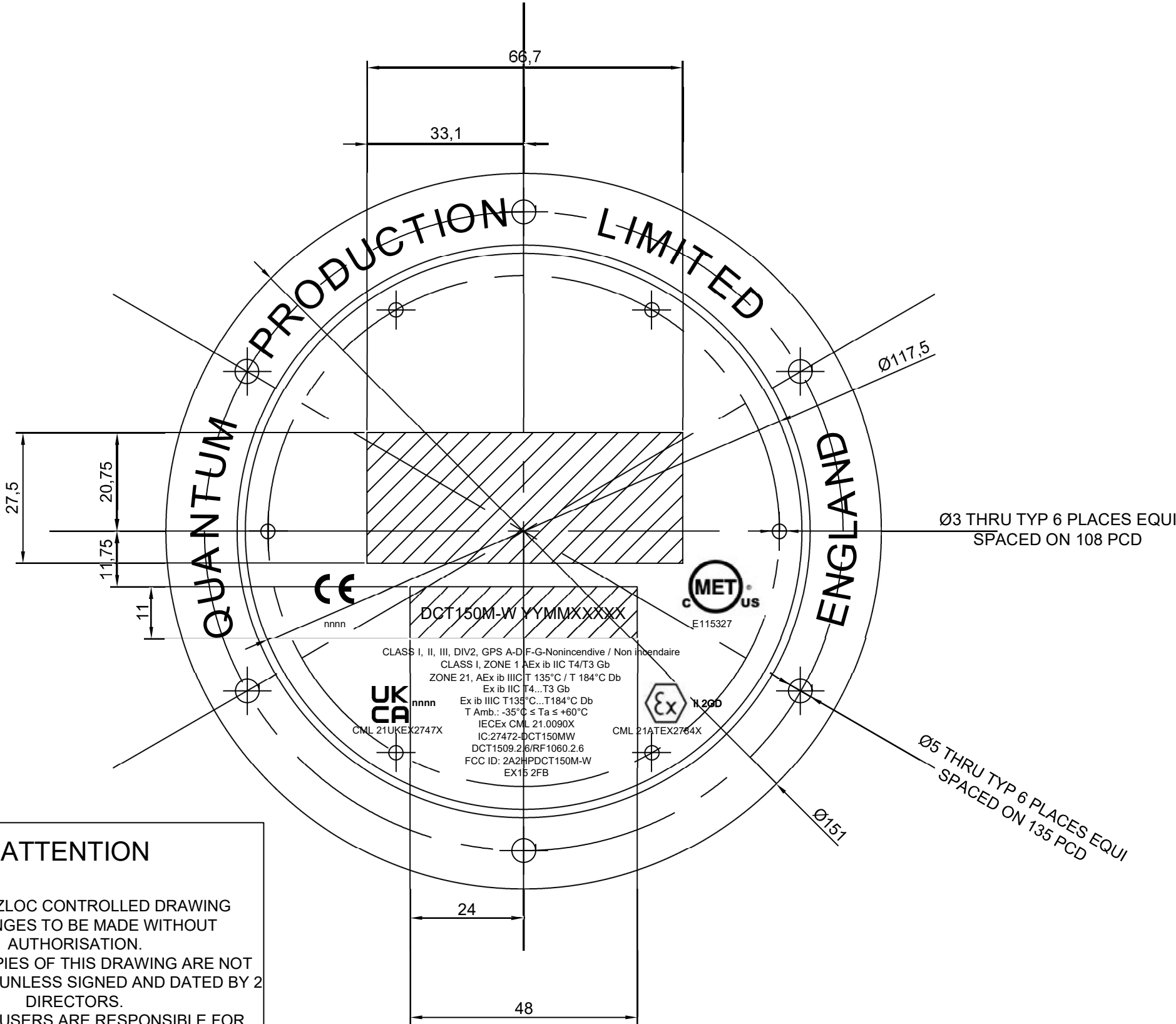
REV 04 CHANGES
FURTHER CERTIFICATION REFERENCES AMENDED

REV 05 CHANGES
CERTIFICATION REFERENCES AMENDED

REV 06 CHANGES
CERTIFICATION REFERENCES AMENDED

REV07 CHANGES
CERTIFICATION REFERENCES ADDED

REV08 CHANGES
CERTIFICATION REFERENCES AMENDED



ATTENTION

ATEX / HAZLOC CONTROLLED DRAWING
NO CHANGES TO BE MADE WITHOUT
AUTHORISATION.
PRINTED COPIES OF THIS DRAWING ARE NOT
CONTROLLED UNLESS SIGNED AND DATED BY 2
DIRECTORS.
DOCUMENT USERS ARE RESPONSIBLE FOR
ENSURING PRINTED COPIES ARE VALID PRIOR
TO USE.

SIGN ATW		DATE	
SIGN DTW		DATE	

08	01-08-21	ATW	ATW
07	20-07-21	ATW	ATW
06	19-07-21	PM	ATW
05	02-04-20	PM	DTW
04	18-03-20	PM	DTW
03	06-03-20	PM	DTW
02	28-02-20	PM	DTW
01	27-01-20	PM	DTW
REV	DATE	DRAWN	CHECKED