

**Multifunctional Smart Flowerpot**

# **User Manual**

## Cautions

1. In order to prevent the occurrence of accidents that threaten personal safety, such as machine damage, fall, electric shock, fire, etc., please install and use correctly in strict accordance with the instructions, and do not disassemble, transform and replace parts and accessories at will.
  2. This machine is only for indoor use and the ambient temperature is in the range of 0-40 °C . When the room temperature is lower than 0 °C , please pour out the water in the machine so as not to cause damage to the machine due to icing.
  3. The machine must be placed on the indoor horizontal table to avoid tilting and away from the heat source and direct sunlight. There is a circuit control system at the bottom and top of the machine. please do not flip the machine when it is powered on or there is water inside, so as to avoid damaging the internal electronic components.
  4. The power supply voltage must be consistent with the input voltage of this product. If the power supply voltage does not match, please do not use this product.
  5. When the whole machine is not in use for a long time, the date and time may need to be recalibrated (please refer to "time and date setting").
  6. Do not plug or unplug the power plug with wet hands to avoid the danger of electric shock.
  7. In the case of power outage, add water to the planting water tank or humidifying water tank, please do not exceed the prescribed water level. Tap water can be added to the planting water tank, and mineral water, unfiltered tap water and cold boiled water must be used in the humidification tank. If pure water and distilled water are added, it will lead to water leakage of condensed water droplets at the spray mouth and unsmooth spray (long-term addition will affect the life of the product).
- Note: appropriate amount of diluted essential oil can be added to the humidified water tank according to your preference, but do not add other corrosive additives.
8. humidifier spray, may form water droplets in the spray mouth, part of the water droplets will flow to the table, this is a normal phenomenon.
  9. When there is no water in the humidifying tank, a whistling sound may be produced, and it will return to normal after re-injection.
  10. When not in use for a long time, please unplug the power plug, pour out the water in the planting water tank and humidifying water tank, and clean the whole machine, including the water tank, and then place the machine in a dry and ventilated place indoors.
  11. When using the eye protection table lamp, you can gently bend the top to a certain angle, do not force the top to break, in case the top shaft is broken.

Tip: the illustrations of the products, accessories and user interface in the manual are all schematic diagrams. Due to the update and upgrade of the product, there may be a slight difference between the physical product and the schematic diagram, please take the physical object as the standard.

## FAQ

It might not be breakdown when the following circumstances occur. Please confirm it before asking for repair. If such circumstances cannot change, please contact the repair shop designated by our company or our after-sale service department. Do not repair the product by yourself.

Malfunction	Reason	Troubleshooting
Reduced water spray or unable to spray	1. Air is gathered in the spray pipe. 2. The humidifier is clogged with filter cotton. 3. Humidification tank fouling.	1. Turn on the humidifier switch, wait a moment or gently vibrate the fuselage to let the air out. 2. Clean or replace filter cotton. 3. Use citric acid to clean and humidify the water tank, see "Daily cleaning and maintenance" for details.
Flowers and plants cannot grow well	1. The water level of the lighting or planting water tank does not meet the requirements. 2. The water in the planting tank is not changed regularly. 3. The natural growth cycle of plants is nearing the end.	1. Understand the habits of flowers and plants: A. Increase or decrease the duration of plant light supplement. B. There is not enough or too much water in the planting tank. 2. Change the water in the planting tank regularly. 3. Plants have life, and at the end of their life cycle, new plants are replaced.

Disclaimer:

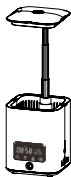
Our company shall not bear any responsibility for any damage caused to customers and their property loss due to their improper use or keeping of the product.

The user manual is only for reference. We retain the right to amend all parameters or figures displayed in the user manual in accordance with the product modification and upgrading without prior notice. And we will bear no responsibility for any direct or indirect damage caused by operating the product without following the user manual.

## Product Parameters

Name	Model	Input voltage and current	Maximum power
Smart Flowerpot	LB2	DC5V 2A	10W

## Package List



Main Body  
\*1



Power cord  
\*1



Watered  
cup \*1



Filter  
Cotton \*3



Absorbent  
tampon \*1



Non-woven  
fabric \*1



User  
Manual \*1

# Environmental Protection List

Component	Toxic, Harmful Material or Element					
	Lead (Pb)	Mercury (Hg)	Cadmium (Cd)	Hexavalent Chromium (Cr6+)	PBB	PBDE
Metal parts	X	O	O	O	O	O
Circuit module	X	O	O	O	O	O
Cables and cable assemblies	X	O	O	O	O	O
Plastic	O	O	O	O	O	O

This form is compiled in accordance with SJ/T 11363-2006.

O: indicates that the content of the hazardous substance in all homogeneous materials of the component is below the limit specified in SJ/T 11363-2006.

X: indicates that the content of the hazardous substance in at least one of the homogeneous materials of the component exceeds the limit specified in SJ/T 11363-2006.

Note: all parts marked "x" in the table comply with EU RoHS regulations.

## Daily Cleaning and Maintenance

1. After running for a period of time, there are dirt or sundries in the planting tank, which is due to the metabolism of plants, which is a normal phenomenon.

2. The planting water tank and humidifying water tank need to be cleaned regularly (usually 2-4 weeks / time). When cleaning, unplug the power supply, take out the inner bucket, pour out the remaining water in the tank and clean it, then put it into the inner bucket and re-inject the nutrient solution or water.

Note: please do not let the water flow along the telescopic rod to the top or base where there is a circuit.

3. When not in use for a long time, please pour out the water in the water tank and clean it.

4. After long-term use, if you find that the amount of spray is reduced or there is no fog:

1) replace the humidifier through the filter cotton or rinse it with water and then put it back to its original position.

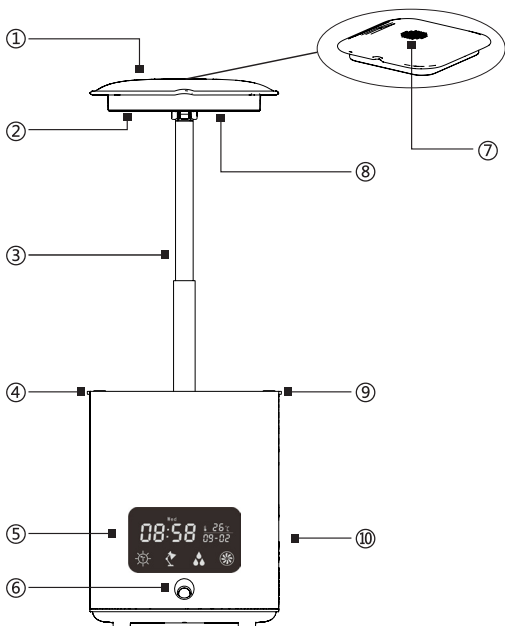
2) inject about 10% citric acid solution into the humidifying water tank, atomize for 30 minutes, and gently wipe the surface of the spray mouth with a cotton swab stained with white vinegar or alcohol.

5. The fuselage can be wiped clean directly with clean and soft cloth dipped in soapy water and wiped clean. It is recommended to clean once a week. Do not clean with other reagents, or it will cause discoloration or damage to the fuselage.

6. Use the data cable configured by the whole machine, and ensure that the voltage and current meet the requirements.

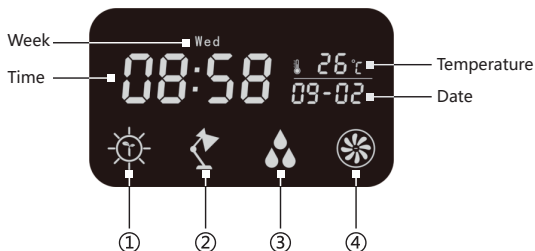
7. This product is not a toy. When children come into contact with it, please make sure that it is carried out under the supervision of their parents.

# Product Structure



- ① Top Cover
- ② Eye-protective Lamp
- ③ Extension Rod
- ④ Injection nozzle (left, Planting water tank)
- ⑤ Touch Panel
- ⑥ Humidifier Spray Nozzle
- ⑦ Air Purifier
- ⑧ Supplementary Lighting for Plants
- ⑨ Injection nozzle (right, Humidifying water tank)
- ⑩ External Barrel

# Time and Date Setup



- ① Touch Switch (Supplementary Lighting for Plants)
- ② Touch Switch (Eye-protective Lamp)
- ③ Touch Switch (Humidifier)
- ④ Touch Switch (Air Purifier)

## Time and Date Setup:

Function	Entry Condition	Operation Steps
Time Setup	Long press ① ② for 3 seconds	<p>A. The first digit starts to flicker.</p> <p>B. Short press button ② (similar to +)</p> <p>C. Short press button ③ (similar to -)</p> <p>D. Short press ① , the second digit flickers, repeatedly short press button ② or ③ . Same procedure.</p> <p>E. Short press button ④ (similar to confirmation button) , then the time is successfully set up and the screen will show the current time.</p>
Date Setup	Long press ③ ④ for 3 seconds	<p>A. The first digit starts to flicker.</p> <p>B. Short press ② (similar to +)</p> <p>C. Short press ③ (similar to -)</p> <p>D. Short press ① , the second digit flickers, repeatedly short press ② or ③ . Same procedure.</p> <p>E. Short press ④ (similar to confirmation button), and then the date is successfully set up and the screen will show the current date.</p>

# Touchscreen Operation

## Touchscreen Operation Instructions:

	Entry Condition	Description
Power On	Plug in the adapter; power on	The whole machine goes into dormant state or pre-dormant state.
Plants Supplementary Lighting	Short press ① , and switch between automatic mode, manual mode, and ready mode	In the automatic mode, the lighting works each day by default: 8:30 to 12:00 and 13:30 to 17:30
		In manual mode, the plant supplementary light has two gears of full bright and low bright.
Eye-protection Lamp	Short press ② , and switch between automatic mode, manual mode and ready mode	In the automatic mode, from 6:30 to 22:00, the lamp automatically goes off after one hour each time.
		In manual mode, the eye protection lamp has two gears of full light and low light.
Humidifier	Short press ③ , and switch between automatic mode, manual mode and ready mode	From 8:30 to 12:00 and 13:30 to 17:30 and in the automatic mode, the humidifier works for 5 seconds, then suspends for 10 seconds and runs like this cyclically.
		In the manual mode, the humidifier is always in a working condition.
Air Purifier	Short press ④ , and switch between automatic mode, manual mode and ready mode	From 8:30 to 12:00 and from 13:30 to 17:30 and in the automatic mode, the purifier works for 5 minutes and suspends for 10 minutes and run like this cyclically.
		In the manual mode, the purifier is always in a working condition.
Speaker	Long press ② ③ for 3 seconds	Turn the speakers on or off.

### Note:

1. The plants supplementary lighting and eye-protection lamp cannot start up to work at the same time.
2. In the automatic mode, press button and then green light will be on; in the manual mode, press button and then blue light will be on.
3. During 22:00 to 6:30 of the next day, if all functions are in a ready or automatic mode, and any function button is free of touch within 1 minute, the display screen and the indicator lights for buttons will be off.

# Warranty

Statement: The electric parts of the product are guaranteed for one year of repair but there is no warranty for plastic parts since the purchase date. See the warranty card below for details.

Note: When you need after-sales service, please contact the local seller.

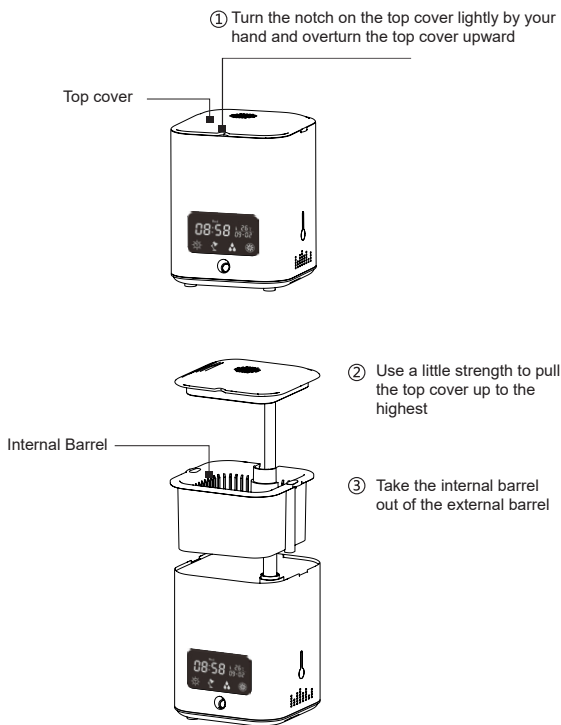
## Warranty Card

Customer	Name:		Warranty Period: one year
	Address:		
	Telephone:		
	Purchasing Date :		
<p>Please fill details in each column of this card and get it stamped by your dealer, otherwise it will be invalid.</p> <p>1.The product is guaranteed repair for free within one year from the date of purchasing.</p> <p>After the warranty period above, if some part needs to be replaced, a proper inspection and repair fee will be charged.</p> <p>3.During the warranty period, a repair fee will be charged if any of the following circumstances occurs:</p> <p>a). The warranty card or purchasing evidence (invoice or receipt) cannot be presented.</p> <p>b). Repair is not covered by the warranty period.</p> <p>c). damage caused by dismounting or modification.</p> <p>d). damage caused by misuse or negligence.</p> <p>e). malfunction or damage caused by non-home use (such as placed in terrible place for a long time).</p> <p>f). exterior looking naturally stained or worn out by uses.</p>		Inspector	
		Signed and stamped by dealer	

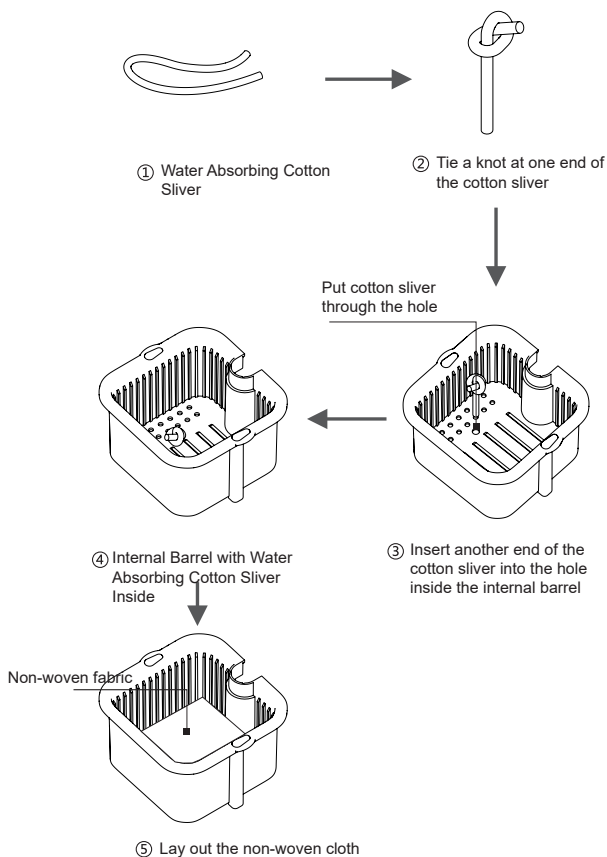


# Usage

1. Take out the complete device from the package box and remove the package bag covering the device.
2. Turn the notch on the top cover gently, flip the top cover upward and use a little strength to pull the top cover up to the highest.
3. Take the internal barrel out of the external barrel and then take out accessories inside the internal barrel.

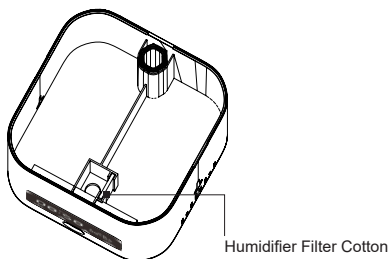


4. Take out water absorbing cotton sliver and tie a knot at one end of the cotton sliver.
5. Put the knotted cotton sliver into the internal barrel.
6. Spread the nonwovens in the inner bucket.

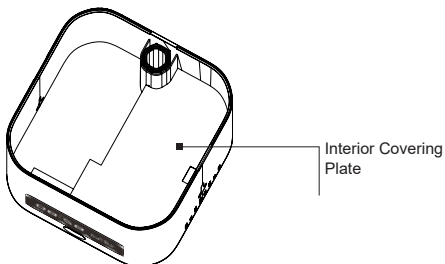


7. Choose the right flowers and plants (dwarf plants are more suitable), mix them with nutritious soil and plant them on an inner bucket with moisture-absorbing sliver and covered with non-woven cloth.

8. Check whether there is filter cotton in the water tank for humidifying inside the external barrel, and then put on the interior covering plate.



- ① Check whether the humidifier filter cotton is mounted properly

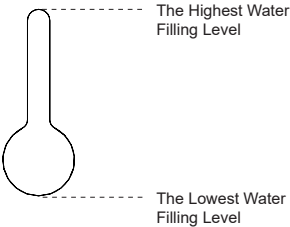
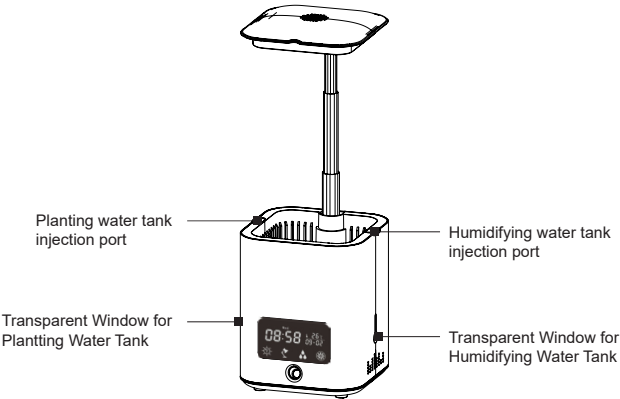


- ② Put on the interior covering plate properly

9. Put the internal barrel with plants and flowers into the external barrel gently.

10. Insert the watered cup into water filling nozzle and fill water into the water tanks for plantation and humidifying separately. Observe the left and right transparent windows when you are filling water to avoid the water level beyond the top level of those windows (that is the highest water level).

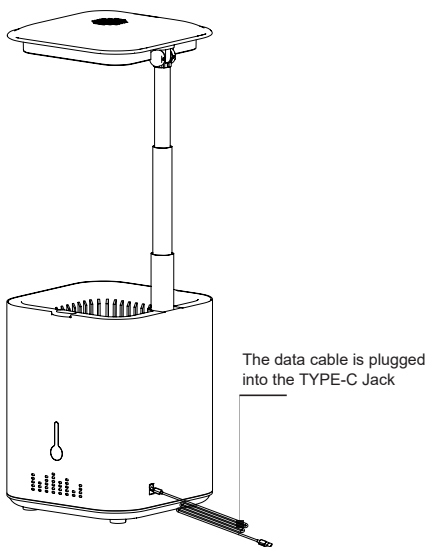
Note: Only mineral water, unfiltered tap water or cool boiled water can be filled into the water tank for humidifying. If purified water or distilled water is filled into it, water droplets will condense around the spray nozzle or the spray cannot work well (the product use life will be affected if you do so for a long time). A proper volume of essential oil can be added into the water tank for humidifying if you like.



**The Highest and Lowest Water Filling Level Through Transparent Window**

11. Plug the randomly configured data cable into the TYPE-C socket at the back of the machine, the other end of the data cable is connected with the adapter, and the adapter is plugged into the power outlet that meets the voltage requirements. After being powered on, various functions can be used through the touch screen operation.

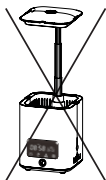
Note: when choosing an adapter, make sure that the output voltage of the adapter is 5V and the output current is not less than 2A. Adapters that do not meet this requirement cannot be used.



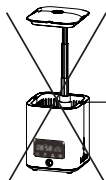
**Plug the data cable into the TYPE-C Jack on the back of the whole machine**

# Notices for Use

1. The device cannot be soaked into water.
2. Different flowers and plants require different moisture. Please adjust the water level inside the plantation water tank based on their growth features (Some plants do not need to add water, they may only need to sprinkle water on their leaves regularly).
3. In normal uses, please regularly observe the water inside the water tanks for plantation and humidifying through the transparent window. If the water level is below the lowest water level, please timely fill in water through the water filling nozzle on top of the internal barrel (taking the above No. 2 notice into consideration) .
4. Please do not stare at the lamp panel on the top for a long time when the plants supplementary lighting is on.
5. When using the eye protection lamp, you can gently turn the lamp panel at the top upward so that the light shines to the appropriate area (when the lamp plate at the top does not rotate gently and hard, do not turn it vigorously).
6. There is special requirement for filling water into the humidifier. Only mineral water, unfiltered tap water or cool boiled water can be filled in the tank for humidifying. If purified water or distilled water is filled into it, water droplets will condense around the spray nozzle and the spray cannot work very well (the product use life will be affected if you do so for a long time).
7. Please move the device horizontally.



Keep the top and the bottom parts away from water



Water Filling Nozzle  
for Humidifying  
Water Tank

Do not fill purified or distilled water into the water tank for humidifying

#### FCC Warning

This device complies with part 15 of the FCC rules. Operation is subject to the following two conditions: (1) this device may not cause harmful interference, and (2) this device must accept any interference received, including interference that may cause undesired operation.

Changes or modifications not expressly approved by the party responsible for compliance could void the user's authority to operate the equipment.

NOTE: This equipment has been tested and found to comply with the limits for a Class B digital device, pursuant to part 15 of the FCC Rules. These limits are designed to provide reasonable protection against harmful interference in a residential installation. This equipment generates uses and can radiate radio frequency energy and, if not installed and used in accordance with the instructions, may cause harmful interference to radio communications. However, there is no guarantee that interference will not occur in a particular installation. If this equipment does cause harmful interference to radio or television reception, which can be determined by turning the equipment off and on, the user is encouraged to try to correct the interference by one or more of the following measures:

- Reorient or relocate the receiving antenna.
- Increase the separation between the equipment and receiver.
- Connect the equipment into an outlet on a circuit different from that to which the receiver is connected.
- Consult the dealer or an experienced radio/TV technician for help.

#### Radiation Exposure Statement

This equipment complies with FCC radiation exposure limits set forth for an uncontrolled environment. This equipment should be installed and operated with minimum distance 20cm between the radiator and your body.