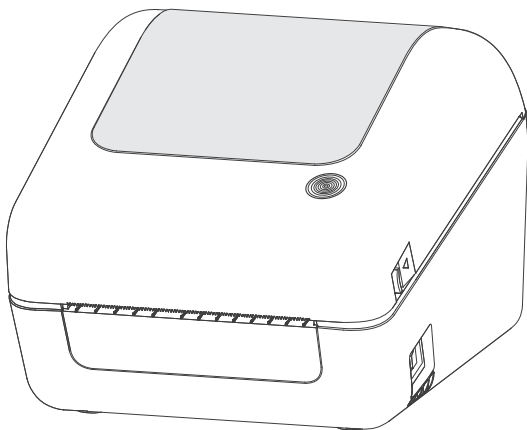


BEEPRT



BY-245/BY-245BT

User Manual

Thanks for choosing us!

If you have any question or concern , **BEEPRT** support is available by email . Problems could be resolved quickly.

Please kindly contact us

E-mail : bee@beeprt.com

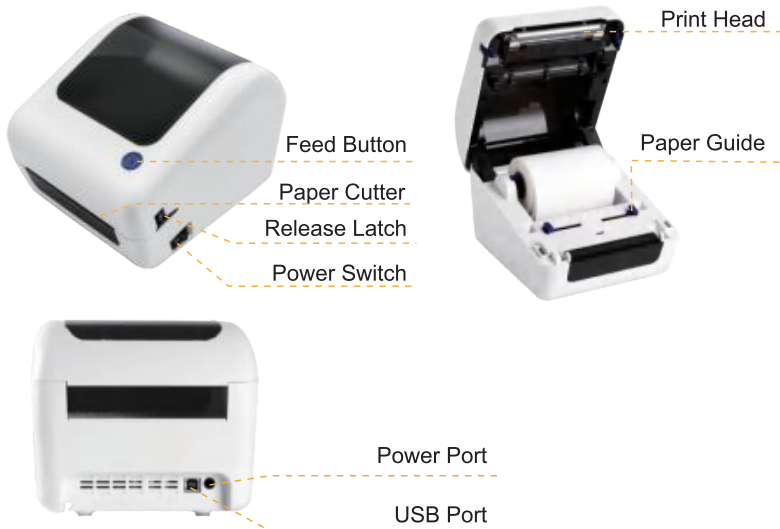
Web : www.beeprt.com

help.beeprt.com

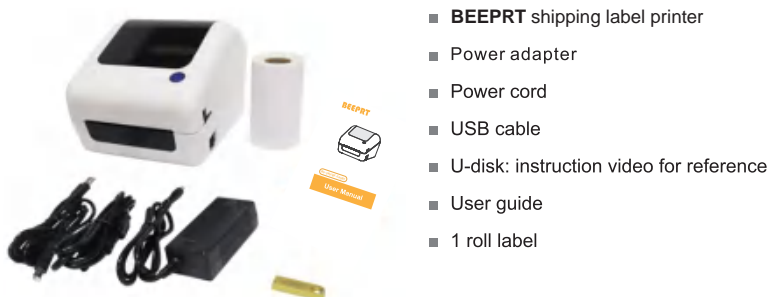
Content

1. Appearance	1
2. Packing list	1
3. Printer connection	2
4. The suitable label size	3
5. How to feed label	3
6. Installation for Windows	4
7. Installation for Mac	10
8. Printer preference settings	15
9. Printing via android	22
10. Printing via iOS / iPad	25
11. Important Tips: Print label of multiple size using "Take a snap shot"	28
12. Frequently asked question	32
13. Maintenance	35
14. Pro tips	35
15. LED indicator	36
16. Safety tips	36
17. Driver removal	37

1.Appearance



2. Packing list



Note:

If any accessories missing, please contact us to get support.

3. Printer Connection

⚠ Note:

- Make sure the printer's power switch is in the OFF position before connecting the power cord to printer.
- Use the original power adapter only in case the damage caused by charging improperly.
- Please unplug the printer power cord if it is not in use for a long time.



OFF



ON



① Ensure the printer is off



② Attach the power cord to the adapter



③ Connect the power



④ Plug the power cord into the socket



⑤ Connect the USB cable to the printer



⑥ Connect the printer and computer

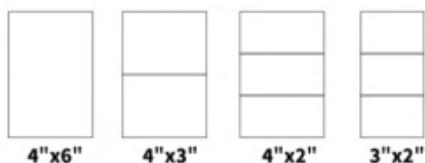


⑦ Turn the power on

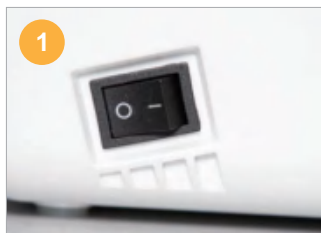
4.The suitable label size

- **BEEPRT** shipping label printer works with any Thermal Direct Label with a width range from 1.57" to 4.1", length over 0.8". Normal paper is not applicable! Must be THERMAL LABEL!
- Ideal for 4"*6"
- Paper size can be selected in Windows and MacBook both.

Label standard size



5.How to feed label



Ensure the printer is off



Pull the release latch to open the cover

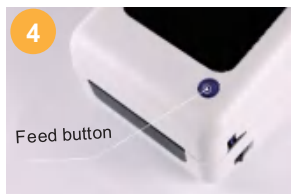


Put the roll label in or insert the fan-fold label from outside, adjust the paper guide to fit the width of paper.



Note:

Ensure the print layer of label face up in case print out blank labels.



Close the cover, switch on the printer and wait 5 seconds for the printer to initialize. Long press the feed button until you hear one beep, release your finger, the label calibrates automatically and will be positioned at the tear-off point, then ready to print.

Note:

- Each time you change the label, please follow the above steps 5.1~5.4. Otherwise, it may cause printing out misaligned or blank.
- Everytime you open the label cover even you never change the paper, you'd better to press the feed button once to load one sheet paper.

6. Installation for Windows

Note:

Recommend to close security software before installation in case of preventing installation

- **BEEPRT** shipping label printer is compatible with windows 7 or later, not compatible with Chrome book, Linux, windows ARM.
- Installation guide video in U-disk for better reference.

Step1: Install the driver

a. Connect power and computer

- 1) Connect the power to the printer through power cord.
- 2) Connect the printer to your computer through USB cord.

Note:

Each time you connect USB port, make sure this connection with a same port, otherwise a printer copy will appear.

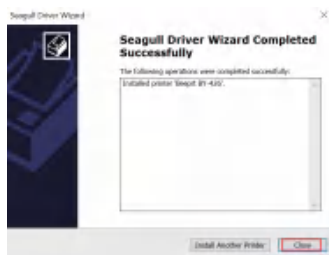
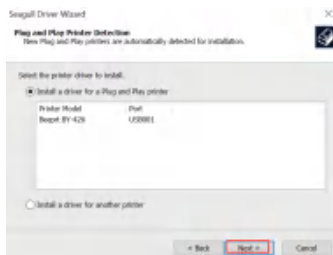
- 3) Put the labels in, switch on the printer, Long press the feed button until it beep once, labels will keep forward and back for several times and then be positioned at the tear-off point, it means the printer is ready to print.

(Make sure these three steps are completed before printing in case of failure to install the printer driver)

b. Install the driver and printer for Windows

Plug in the U-disk (in the package) to your computer, find the file "Label Printer Driver Setupv1.6.4.exe"
and install it, then follow the guide to install printer.

(You can also download the driver "Driver for Windows (BY-245/BY-245BT)" from "<https://www.seagullscientific.com/downloads/printer-drivers/>")

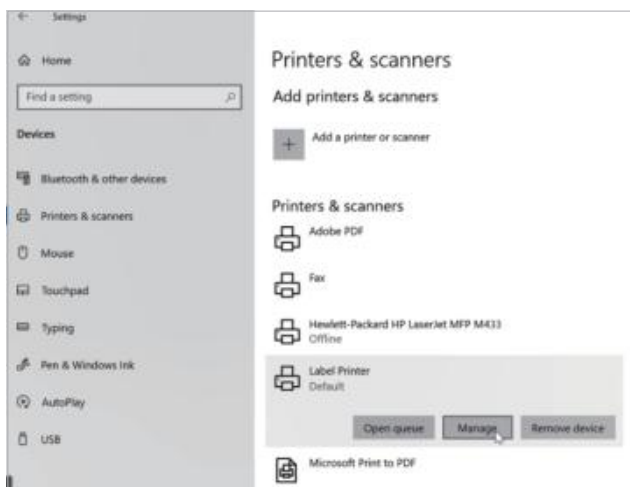


If your printer has Bluetooth function. Please install and use the printer according to the following method.

c. After setting up the printer, check your computer if the printer has installed or not.

Go to the “control panel”> click “Device”>click “Printer & scanners”, and then you will find the printer “Label Printer”, if you can find “label printer ” and print labels successfully, that means you have set up the printer successfully.

If you can't find the printer you have installed, please restart your computer and printer then try again.



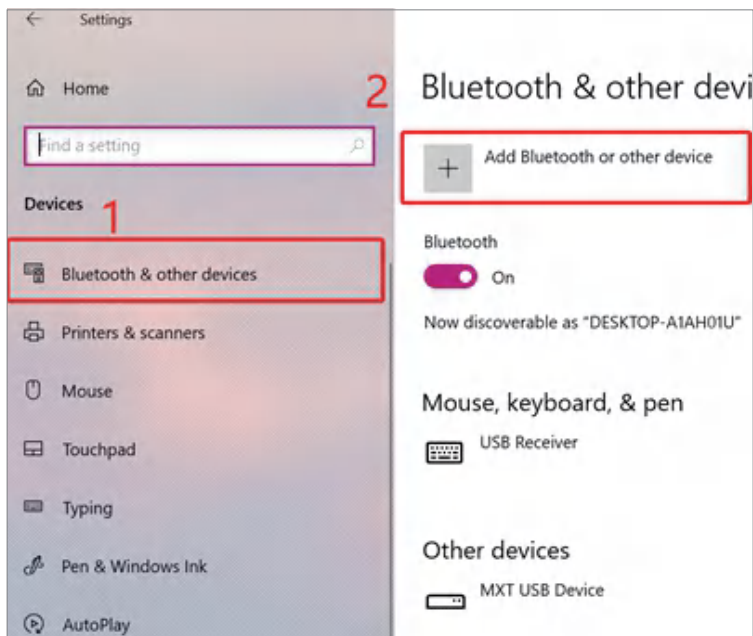
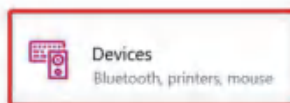
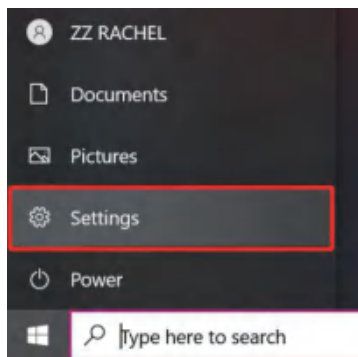
Note:

Now you can print directly via USB, if you want to print via Bluetooth, please follow the steps below.

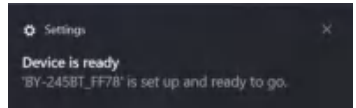
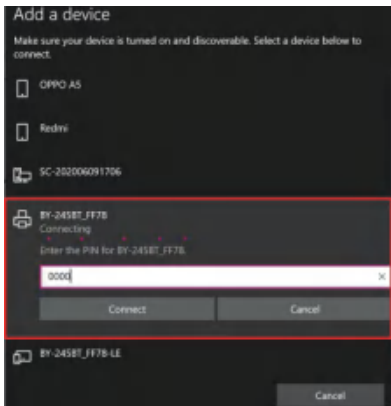
Step2: Add the Bluetooth of printer

a.(Keep the printer and computer connected with USB cable).

Click “Setting”> “Devices” > “Bluetooth & other devices”
>“Add Bluetooth or other device”.

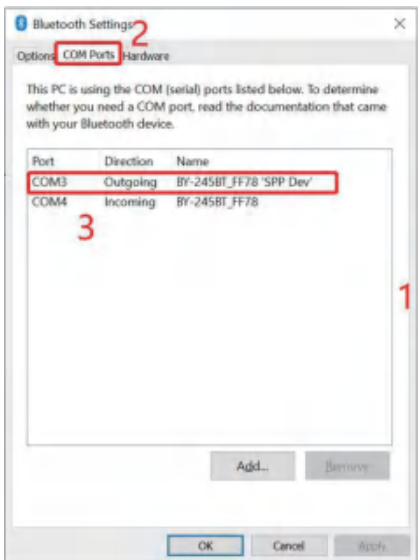


- b. Find Bluetooth printer named “BY-245BT_FF78”, and then input PIN 0000, Bluetooth will be connected successfully.



Step 3: Match the COM port

a. Click “Bluetooth & other device”> “More Bluetooth options”> “COM Ports” > Check OUTGOING port of the Bluetooth “BY-245BT_FF78” and mark down the COM number (For example, here is COM3).



Turn on Bluetooth even faster

To turn Bluetooth on or off without opening Settings, open action center and select the Bluetooth icon.

Related settings

[Devices and printers](#)

[Sound settings](#)

[Display settings](#)

[More Bluetooth options](#)

[Send or receive files via Bluetooth](#)

[Get help](#)

[Give feedback](#)

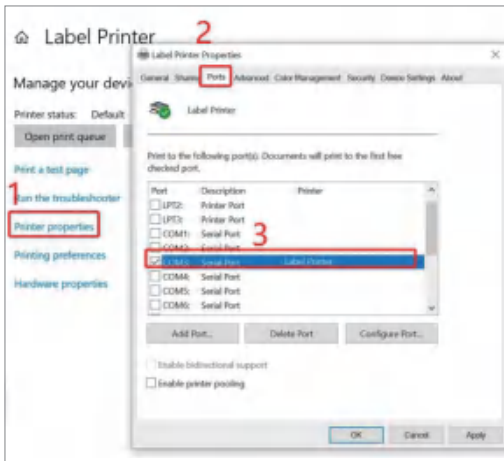
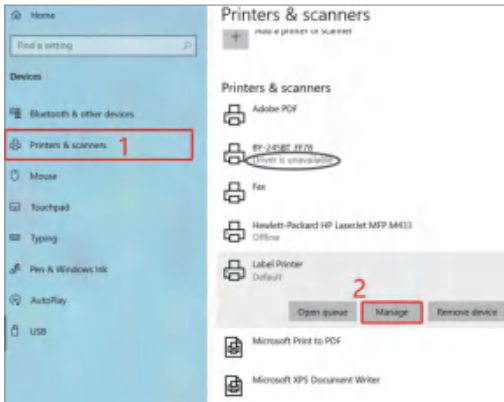
b.Change printer's port to the COM that matches to the Bluetooth.

Click "Printer & Scanners" > Find "Label Printer" > "Manage" > "Printer properties" > "Ports" > Check ✓ in the Ports match to your Bluetooth Port (For example, here is COM3) > Click "OK".



Note:

Please ignore the message "Driver is unavailable" shown in picture below, for it is normal and won't affect the printing.



c. Now you can unplug the USB cable from computer, and then Open PDF file (It's better to use Adobe) > Choose printer named "Label Printer" > You may set up printer preference like darkness, speed, size, then click "Print" (via Bluetooth).



Note:

Now you can print directly, if you want to adjust the printing density, printing speed or other parameter, please refer to "part 8 Printer preference setting"

7. Installation for Mac



Note:

- BEEPRT shipping label printer is only compatible with MAC OS X v 10.9 or later.
- Installation guide video in U-disk for better reference.
- Ensure the printer and your MAC has been connected with USB cable before installing the driver.

Step1: Install the driver for Mac

a. Connect power and computer

- 1) Connect the power to the printer through power cord.
- 2) Connect the printer to your computer through USB cord.
- 3) Put the labels in, switch on the printer. Long press the feed button until it beep once, labels will keep forward and back for several times and then hold on one place, it means the printer is ready to print.

(Make sure these three steps are completed before printing in case failing to install the printer driver.)

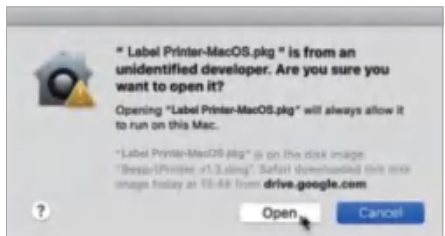
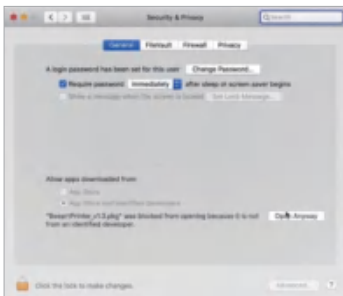
- b. Double click the file in U-disk "Label Printer-MacOS.pkg"(You can also download the driver "Driver for Mac (BY-245)" from "<http://www.jadens.com.hk/support/download/label-printer-drivers/>")



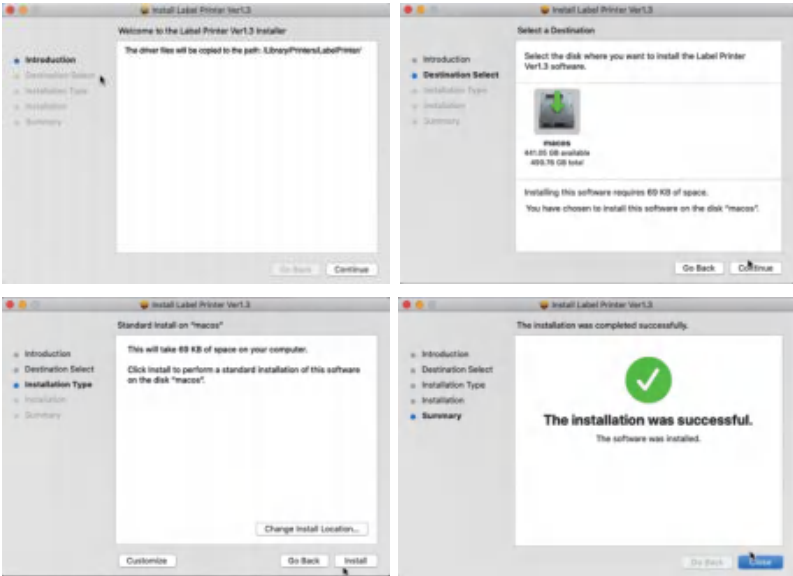
- c. Open "System Preferences", and click on "Security & Privacy". (If you don't see the warning , you can skip this step)



- d. Click on "Open Anyway" button. (If you don't see the warning, you can skip this step)



e. Click on “open” and continue to install the printer. Follow the installation steps until you see " The installation was successful" window.



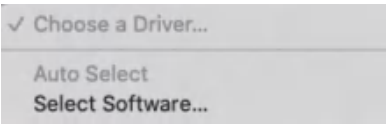
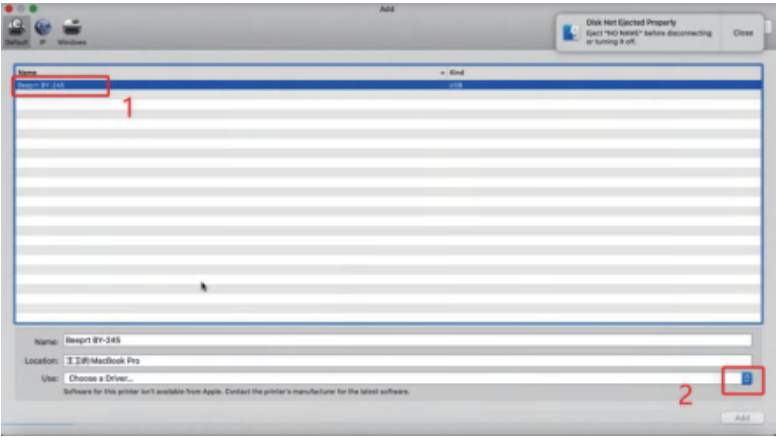
f. Open "System Preferences">>click on "Printer and Scanners".



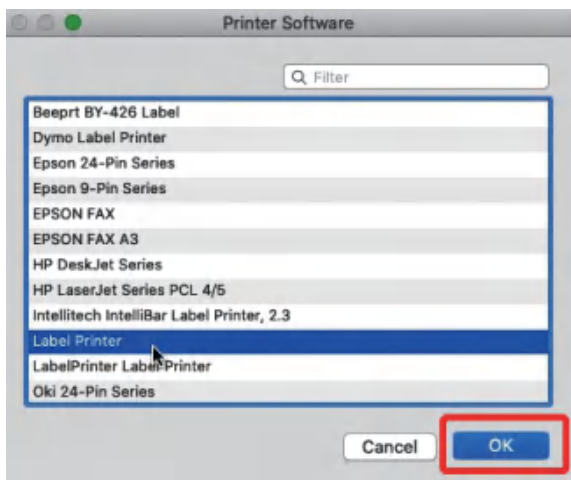
g. Click "+" to add a new printer.



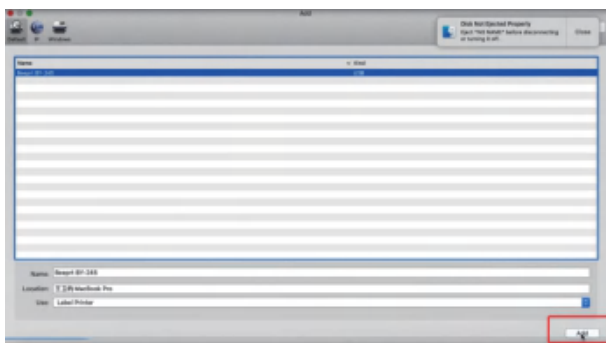
h. Click on "Beeprt BY-245", and choose "Select Software" in the drop down menu.

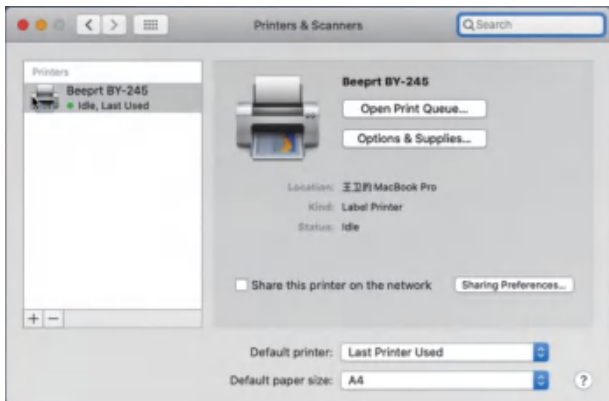


i. Choose “Label Printer” , click “OK”.



j. Click “Add”, now the printer has been installed in your Mac book successfully.





Note:

Now you can print directly, if you want to adjust the printing speed or other parameter, please refer to “part 8 Printer preference setting”.

8. Printer preference setting

1-1. Printer preference setting for windows

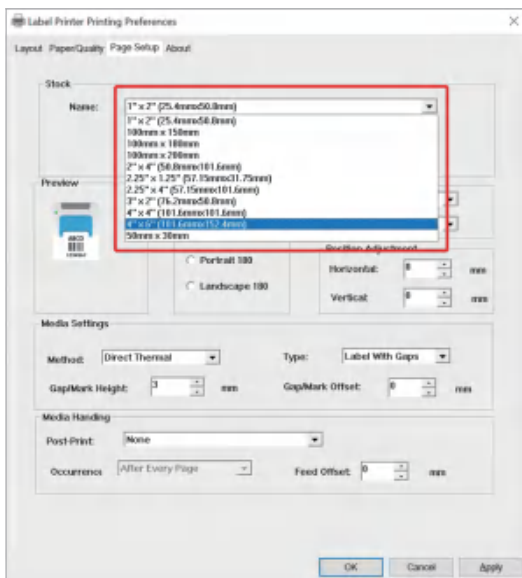
Go to the “control panel”>> click “Device”>>click “Printer & scanners”>>find the printer “Label Printer”>>Click “manage”>> click “Printer Preference”. In this part, you can set the print page size and print speed and density of the label.

(1)Setting the paper quality

- a. Go to “Page Setup”, according to the label size, choose the corresponding page size. Generally, most labels are 4*6 size.

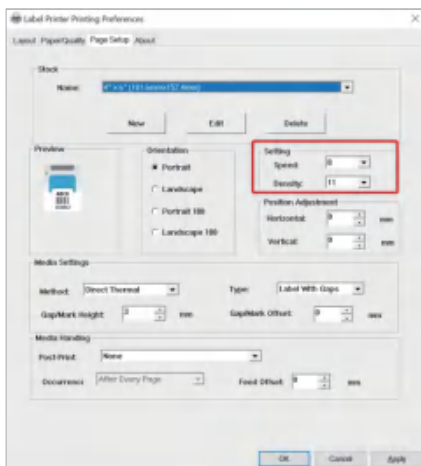
Note:

before printing, please make sure the size loaded thermal labels, the print settings on devices, and the source file are completely the same.



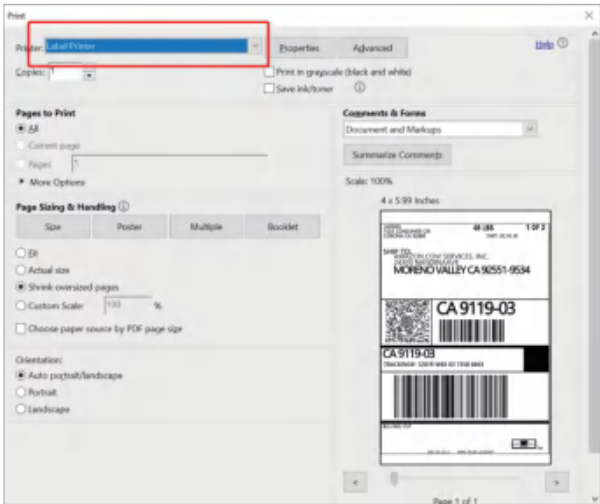
b. In the “Page Quality”, you can change the printing speed and printing darkness.

(Especially for density, if the labels print out light or not clear, you can change the density to larger number, it will help. The larger number you choose, the darker the label will be. 8-12 is recommended)



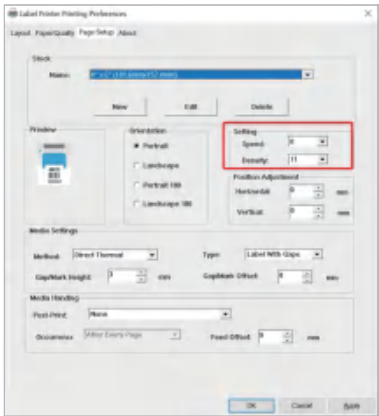
(2)Print a sample file.

- a. Open the a PDF file in the size of 4*6 inch size with Adobe, click the print sign, ensure you have choose the right printer. (If you want to print word file, please transfer it to PDF file then print to get the best out print)



- b. You can go to "properties" , in this dashboard, you can set the page size, printing speed and printing density too.

Note:
before print, please make sure the size loaded thermal labels, the print settings on devices, and the source file are completely the same.

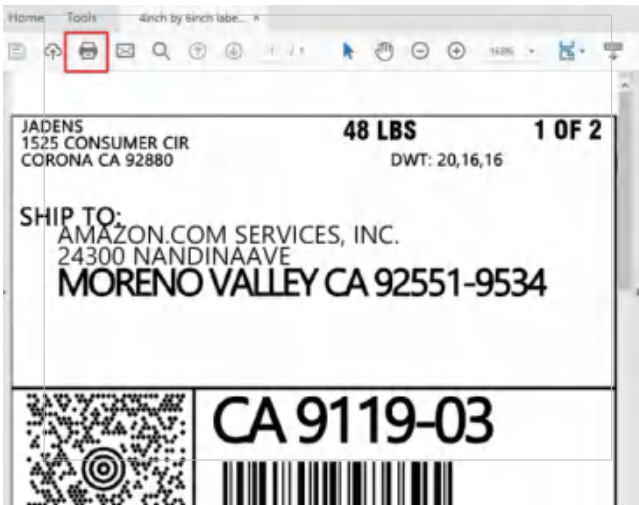


- c. Preview and check the setting you want, such as print size, print density. Then click “print ”. If you have any problem in printing, please turn to part 10 FAQ to get the corresponding solution, or connect us via email.

1-2. Printer preference setting for MAC

In this step, we will show you how to set the print preference helping you print out well.

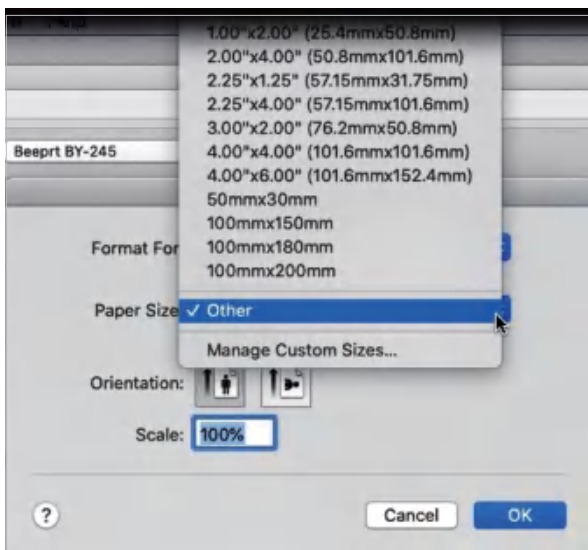
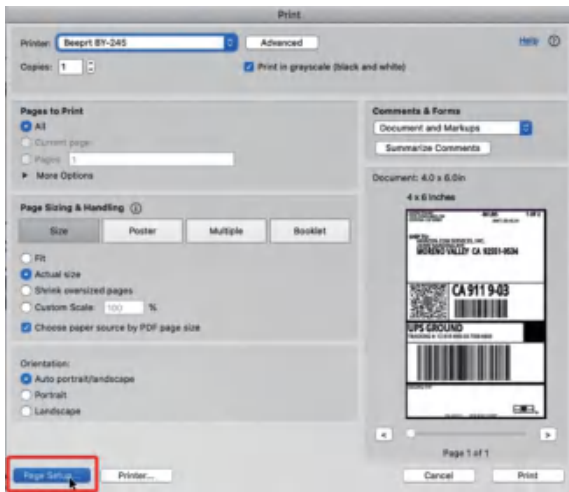
- a. Open a sample PDF file in size of 4*6 inch , click print.



- b. Click “page setup” , you can select the page size you want to print.

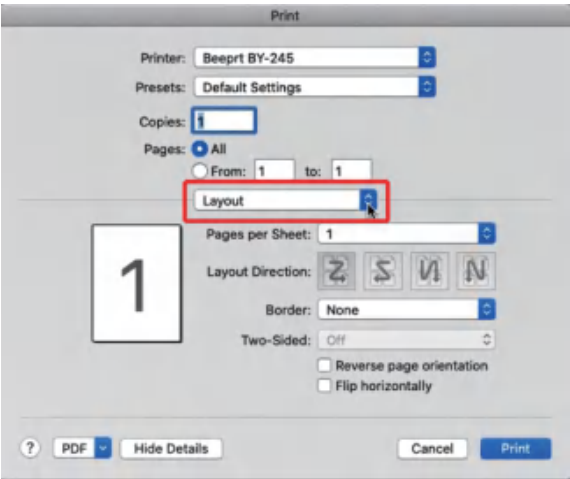
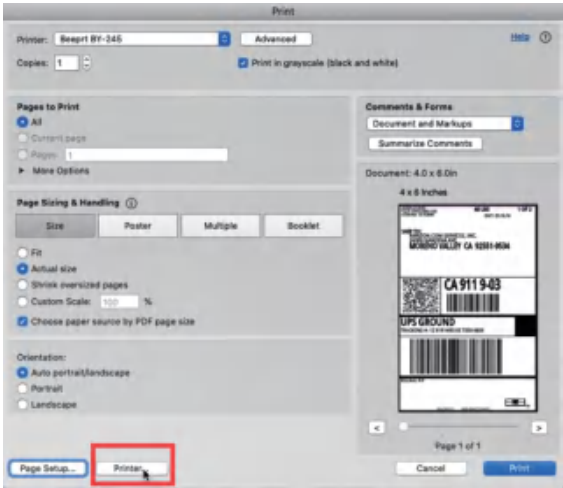
Note:

No matter what size you choose, Please make sure that the size of the oaded thermal abels, the print settings on devices, and the source file are completely the same.

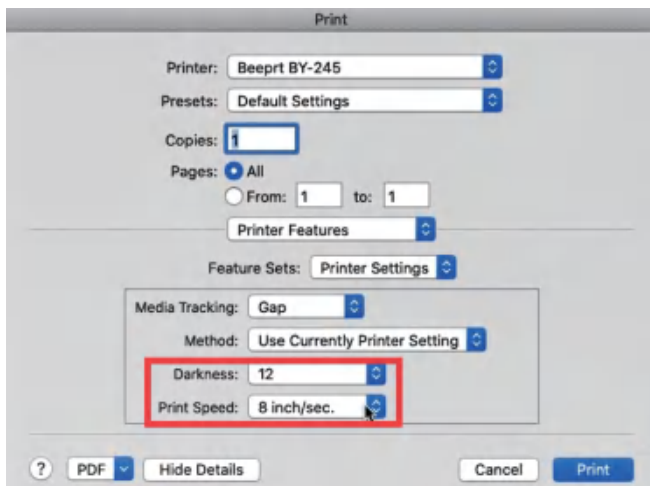


If there is no suitable size for click “manage custom sizes”, input the width and height, then click “ok”.

c. Click “printer preference”>> Choose” printer feature”>> set up the “Darkness” and “Print speed”.

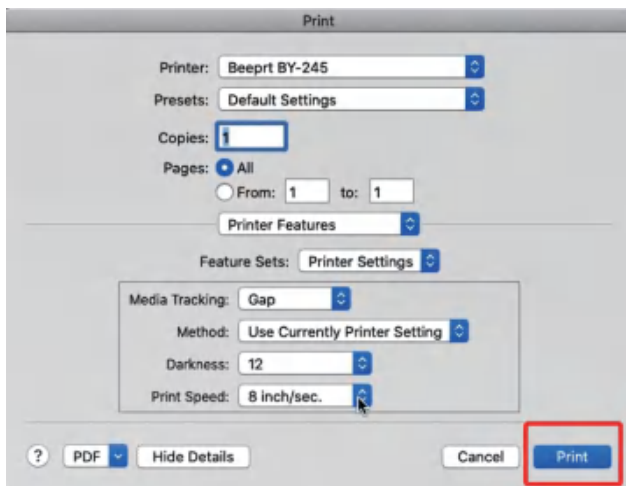


✓ Layout
Paper Handling
Cover Page
Printer Features



Tips: For the darkness, large number means higher darkness, if labels print out light, you can adjust it to large value, 8-14 is recommended.

d. After set up, click "Print"



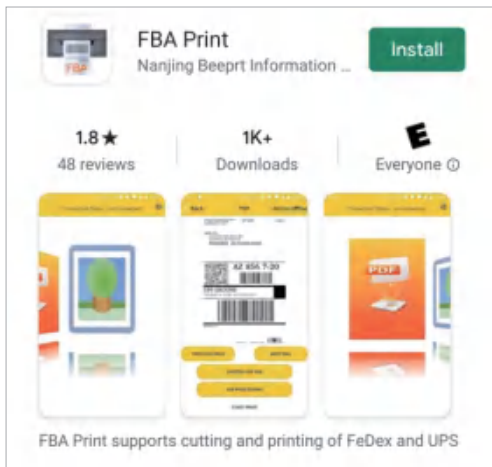
9. Printing via android

! Note:

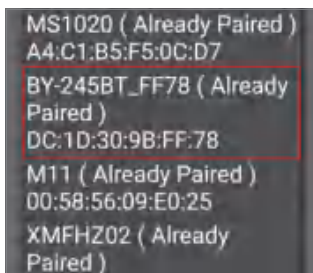
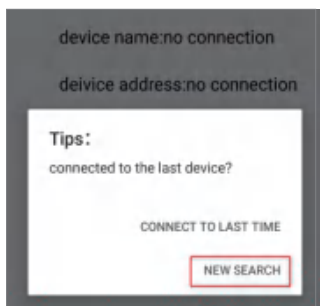
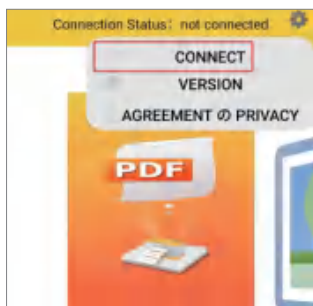
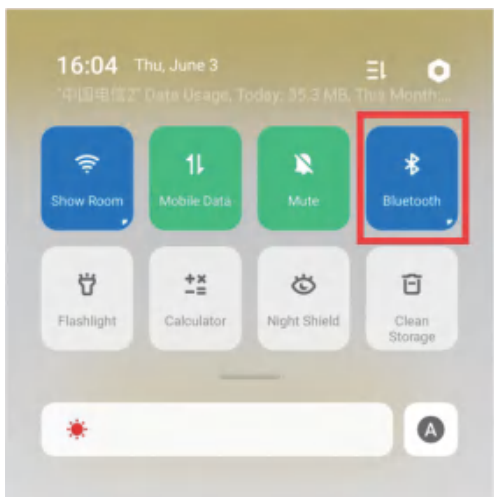
Before installing the APP, please make sure you've calibrated the printer correctly as following steps: (You can also refer to part 5 of the manual.)

- 1.Feed labels.
- 2.Long press feed button until printer beep one, release your fingers.
- 3.Printer will automatically calibrate the printer and load two labels.

a.Install APP “FBA Print” from Google Play.



b.Open Bluetooth on your phone>open “FBA print” >click gear icon ⚙ on the top right corner > “CONNECT” > “NEW SEARCH”>Click to connect the Bluetooth named “BY-245BT_FF78-LE”.



c.Choose PDF file from your Smartphone storage or high resolution image from gallery. Adjust the density, speed and copy, now you can print via Androidsuccessfully.(Print speed is supposed to be higher than 3)

range 1 - 1 total 1 page


den-
sity: 6 (range:0-15)

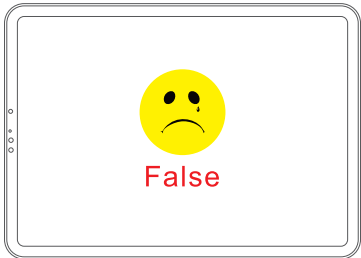
speed
: 4 (range:1-8)

copy: 1

CANCEL OK

10. Printing via iOS / iPad

 **Note:**
If you use iPad to print, please keep iPad portrait.



a. Install APP “FBA Print” from Google Play or Apple Store.

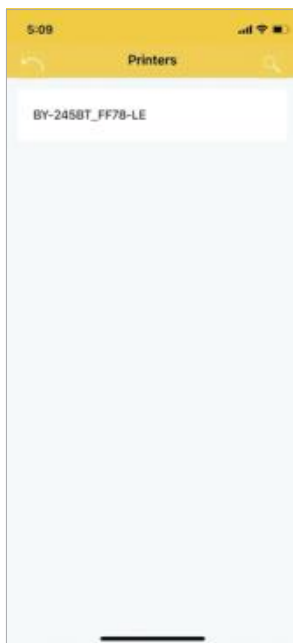


- b. Open Bluetooth of Smartphone > open “FBA print” > click Bluetooth icon  on the top right corner. And connect “BY-245BT_FF78-LE”.




Note:

Connect Bluetooth via App not on your phone!

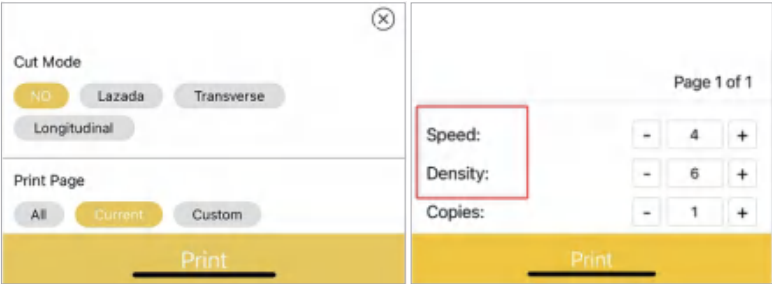


c. Choose PDF file via social medias (Facebook, Skype,WhatsApp…) or high resolution image from Album or Photograph.

**Note:**
Not print via Airprint !



d.Click "print", adjust the density, speed and copy you want and then print.
(Note: APP can only print label of 4*6 inches size)



11. Important Tips: Print label of multiple size using “Take a snap shot”

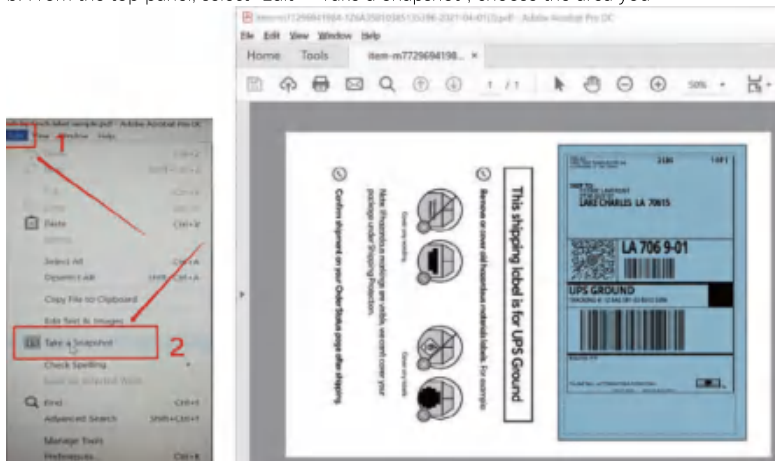
The function of “Take a snap shot ” can solve most print problem. It enable you to print the area you want without needing print a whole page. Now let us show you how to use it.

1.How to print your labels with nonstandard size.

If the printed PDF/file is unusual size such as A4 which can't be found the same size label to buy. In this situations, you have to use the function of “take a snapshot” to print. Here are the steps to operate.

(1).For windows:

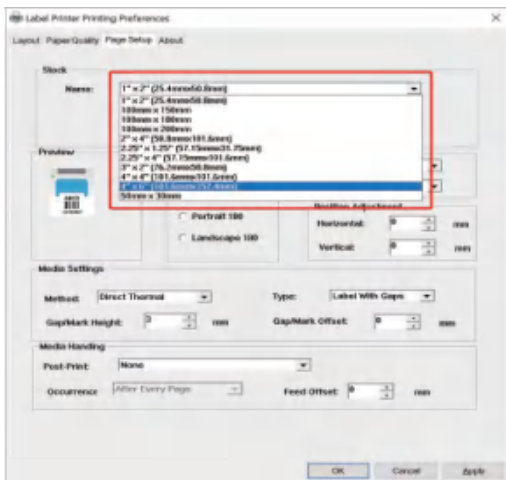
- Open the PDF in Adobe Reader
- From the top panel, select “Edit”>“Take a Snapshot”, choose the area you



- Then click “Print”, set up the page size that matched to the load label size. Then print.

⚠ Note:

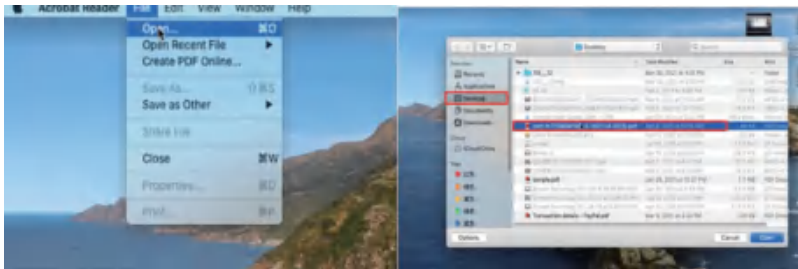
Please make sure the page size match to the load label size, otherwise, it is possible that it prints out over label or misaligned.



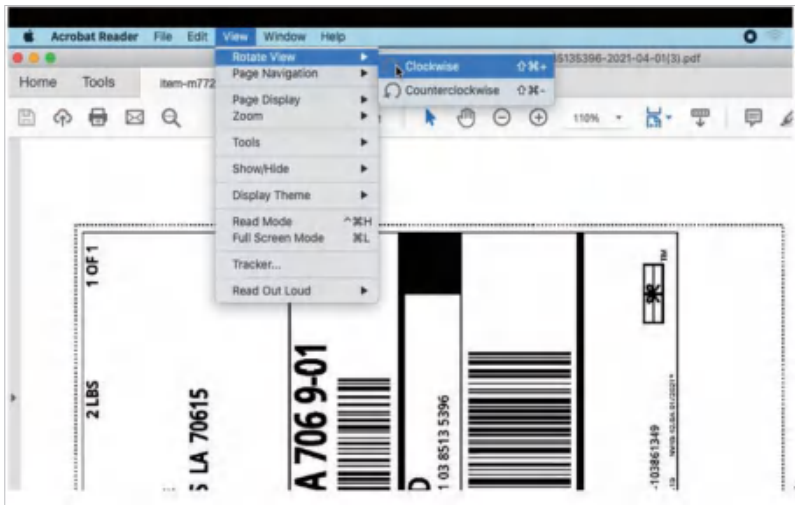
(2) For MAC

Similarly, Mac also has analogous steps.

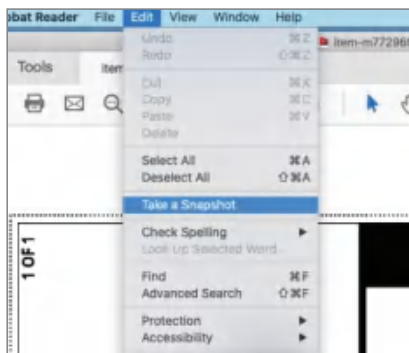
- a. Find the "File" in the top left corner of you desktop > Click "Open" > Click Desktop > Choose PDF file (or you can open the file with Adobe)






- b. From the top panel, select View > Rotate View > Clockwise so that the labels are side by side. (If the labels has laid vertically, please skip this step)








C. Next, from the top panel, select Edit > Take a Snapshot. Then click and drag over one of the labels that you need. So that you can print a specific range of label.



2.If you want to print the label that include barcode, please make sure print out the barcode vertically in case the high temperature lead to the barcode print out blocks and can't be scanned.

ADDRESSEE 1525 CONSUMER DR CORONA CA 92881		48 LBS DWT: 20.16.16	1 OF 2
SHIP TO: AMAZON.COM SERVICES, INC. 24300 NARDINA AVE MORENO VALLEY CA 92551-9534			
	CA 9119-03 		
CA 9119-03 TRACKING#: 1281R W83 03 7358 6843			
			
BILLING P/P			

✓

		Parcel Post	MyPOST
		Postage Paid 	
Packaging Small Satchel	Declared weight Up to 5kg Cubic weight N/A	Delivery features 	
			
Amazon Security and Dangerous Goods Declaration			
Sign Here: _____ I, the sender, acknowledge that this article may be carried by air and will be subject to aviation security and screening procedures, and I declare that it does not contain any dangerous or prohibited goods, explosives or incendiary devices. A false declaration is a criminal offence. If this declaration is not signed this article cannot be carried by air.			

12. Frequently Asked Question

1.Problem: Print over label or print blanks

Cause1: Incorrect position of printing

Cause2: Incorrect page size and print density setting

Solution:

Note:

Before printing, please make sure the size loaded thermal labels, the print settings on devices, and the source file are completely the same, to ensure the best print, you had better to choose 4*6 format when download the labels from the shipping platform or market platform.

1.Power off your printer and power on again.

2.Long press on feed button for around 3 seconds until printer beep one noise, release your finger, printer will automatically study the size, the label keeps back on forth several times, then hold on the correct position.

If the page size or source file is larger than the load label size, it is possible that it prints over label or print blanks.

Note:

If you have ensure the page size match the label size and still print over label or print blanks, please use the snapshot function to print.
(Read the "Part 9 Important tips" of the manual.)

2.Problem: Can't get it to connect computer

Cause1: The printer is not compatible with some computer such as Chromebook, Linux.

Solution1: This printer is compatible with Windows 7 or later and MAC OS X v 10.9 or later. Some windows 7 doesn't work, please update your windows to higher version.

Cause 2: Inaccurate operation

Solution2: please ensure the printer and computer has been connected, and the printer is on before installing the driver, otherwise, it will cause failing to install the printer.

3.Problem:The solution to the problem that Printer spites out a couple of blank labels

Possible cause 1: The print layer doesn't face up

Possible cause 2: Incorrect position of printing

Solution:

1. Please make sure that the print layer faces up before printing.
2. Long press on feed button for around 3 seconds until printer beep one noise, release your finger. Printer will automatically calibrate the place of the labels, which keeps back on forth several times, then hold on the correct position.

4.How to deal with the problem that the labels come out slowly and make a big sound

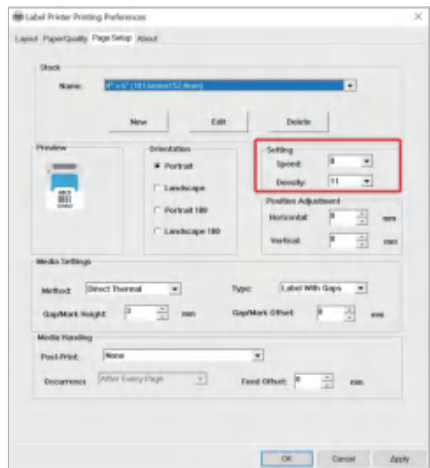
●**Problem:** The labels come out slowly and make a big sound.

●**Possible cause:** Sometimes if the setting of print speed is too low like 2 or 3, it will cause the it print too slow and make a sound, this is an individual phenomenon, not all the printers have this problem.
So just need to adjust to higher value like 8. Find the solution below according to the type of your computer.

●**Solution:**

For windows:

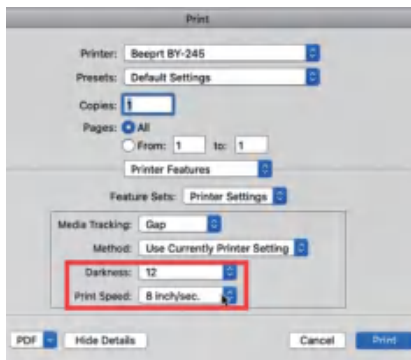
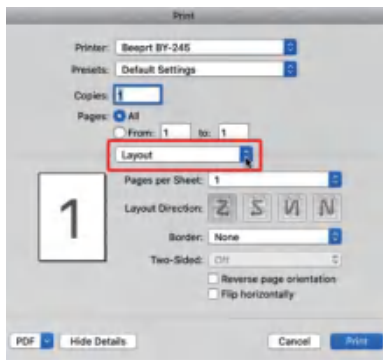
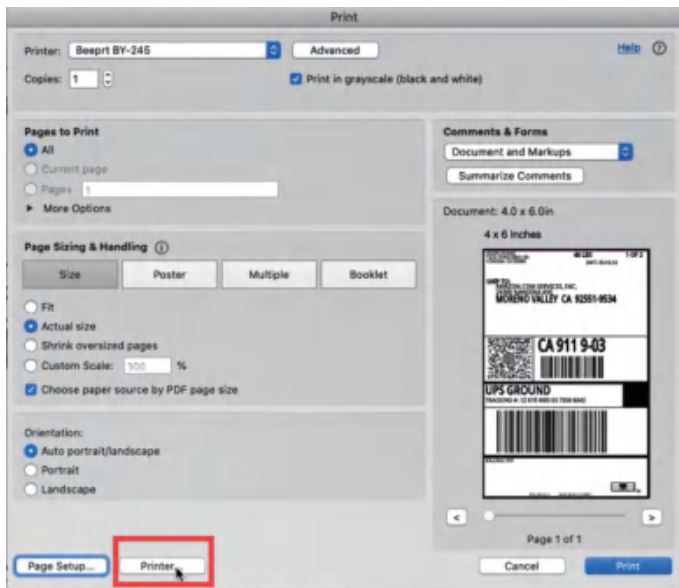
Go to "setting" >>"device" >>
"printer & scanner">>
find the printer>>
"Label Printer", click "manage"
>>Printing preference >>
Page Setup>>
adjust the print speed to 8 as
picture show.



For Mac:

To solve this problem, please follow the steps below:

- Check the print speed setting on your computer and adjust it to 8.
- Open a sample PDF file in size of 4*6 inch , click print.
- Click “printer preference”>> Choose” printer feature”>> set up the “Print speed” to highest value of 8.



13. Maintenance

CLEANING THE PRINT HEAD

The printer head is a sensitive part of the printer and can be found on the upper part of the printer when open.

Caution: While the printer is running the printer head can be very hot.

1. Ensure that the power switch is OFF, remove the power cord, and open the cover. wait several moments to ensure that the printer head cools down.
2. Completely clean the printer head using an alcohol swab like the one provided.

Any 70% Isopropyl Alcohol pad would work. Please do not use water.

3. Wait 2-3 minutes until the alcohol has completely dried, then close the cover.

4. Connect the power cord and print a test page to check if it is clean.

14. Pro tips

- Anytime you'd like to change your label size, run the automatic label identification by pressing and holding the feeder button until you hear one short beep.
- Press the green feeder button on the printer to skip a blank label.
- To run a self-test, press and hold the feeder button until you hear two short beeps.
- Avoid using poor quality labels as they can damage the printer.
- Regularly clean the printer head as outlined above, under MAINTENANCE.
- If paper is jammed, turn off the printer, and allow the printer head to cool down. Open the cover and ensure that the rubber is clean. If it is dirty, use alcohol pad to clean it. Allow the area to dry before turning the printer back on.
- Insert the printer's USB into the USB port on your computer every time you plug it in. This will avoid creating duplicate copies of the printer on your computer.

15.LED indicator

COLOUR OR STATUS OF LED BUTTON	EXPLANATION	SOLUTION
Green	Printer is running normally	
Flashing Green	Printer Head is overheated	None. Printer will automatically resume once the printer head cools down.
Flashing Red (every 2 seconds)	1.Out of paper 2.Wrong size paper	Ensure that the labels are loaded correctly.You may need to run automatic label identification (point 6 in step4).
Flashing Red (2 times per second)	Printer cover is not fully closed	Check that the printer cover is completely closed.

16.SAFETY Tips

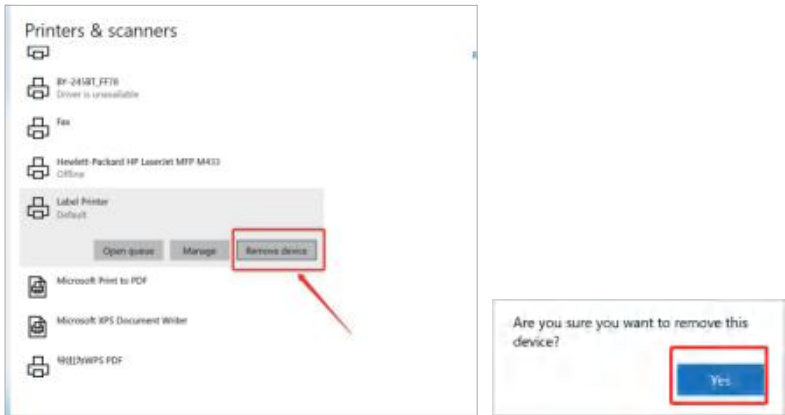
- The printer head can become very hot after printing labels .Do not touch the printer head until it has cooled.
- Do not bend the power cord excessively or place objects on the cord. This could result in fire or electrocution.
- Keep the printer out of reach of children.
- Use only approved accessories and do not try to disassemble or repair the unit by yourself.
- Keep the printer away from water and other objects that may destroy or damage the device.
- Printer should remain unplugged when not in use for long periods of time.

17. Driver removalment

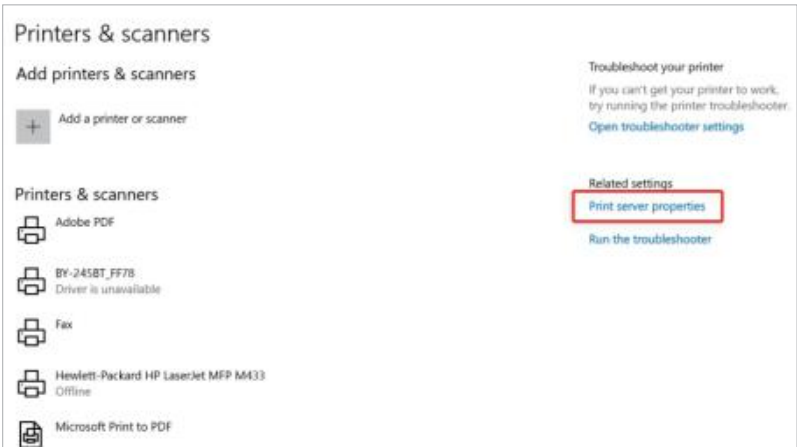
For windows:

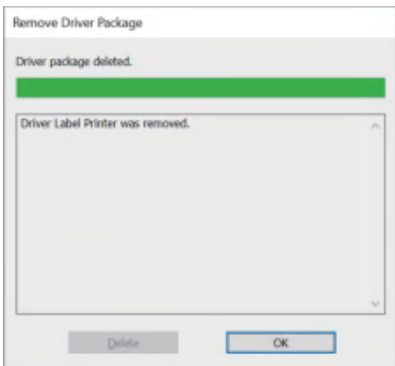
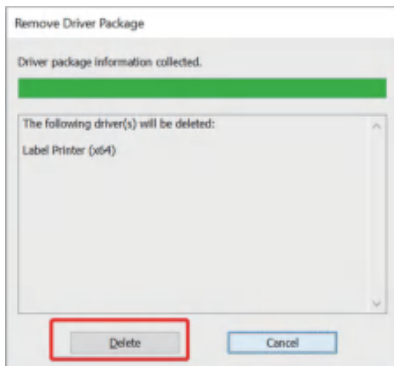
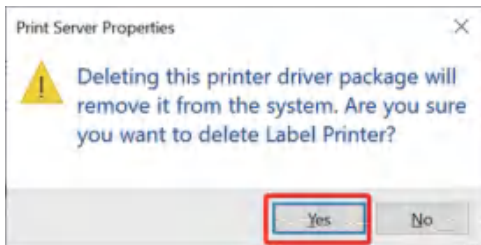
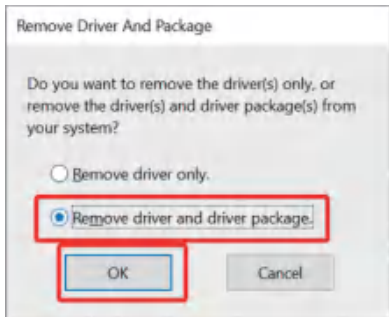
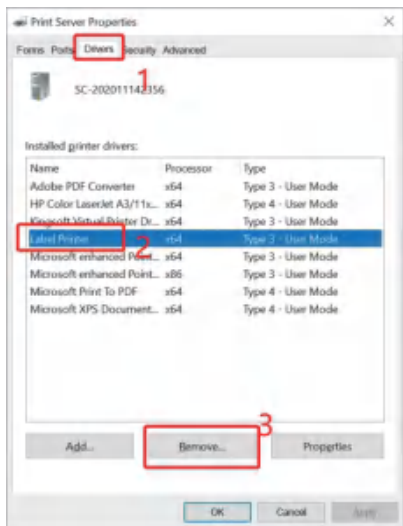
Before removing, please ensure the USB port has been removed on your computer.

1. "Settings" >> "Device ">> "Printer & Scanners" >> "Label Printer">> "Remove device"



2. Click "Print sever properties">>Find the driver "Label printer">> "Remove driver and driver package">> Click "Delete"





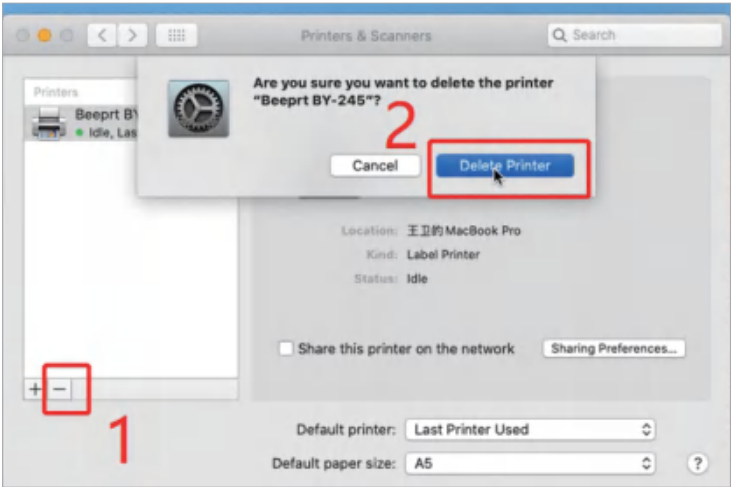
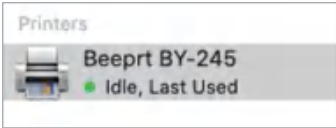
For Mac:

Before removing, please ensure the USB port has been removed on your computer.

1. "Lanuchpad" >>"System Preferences" >>"Printer & Scanners"



2. Find "Beeprt BY-245">> Click "-" >> Click "Delete Printer"



BEEPRT support

Still have a question or concern?

Most issues can be resolved very quickly!

Customer service support is available by

E-mail: bee@beeprt.com

Web: www.beeprt.com

help.beeprt.com

FCC WARNING

This device complies with part 15 of the FCC Rules. Operation is subject to the following two conditions: (1) this device may not cause harmful interference, and (2) this device must accept any interference received, including interference that may cause undesired operation.

Any changes or modifications not expressly approved by the party responsible for compliance could void the user's authority to operate the equipment.

NOTE: This equipment has been tested and found to comply with the limits for a Class B digital device, pursuant to Part 15 of the FCC Rules. These limits are designed to provide reasonable protection against harmful interference in a residential installation. This equipment generates, uses and can radiate radio frequency energy and, if not installed and used in accordance with the instructions, may cause harmful interference to radio communications. However, there is no guarantee that interference will not occur in a particular installation.

If this equipment does cause harmful interference to radio or television reception, which can be determined by turning the equipment off and on, the user is encouraged to try to correct the interference by one or more of the following measures:

- Reorient or relocate the receiving antenna.
- Increase the separation between the equipment and receiver.
- Connect the equipment into an outlet on a circuit different from that to which the receiver is connected.
- Consult the dealer or an experienced radio/TV technician for help.

To maintain compliance with FCC's RF Exposure guidelines, This equipment should be installed and operated with minimum distance between 20cm the radiator your body: Use only the supplied antenna.