

9.4. Left and Right (FNOL) Rear Pylon Camera Mount

This section describes the installation procedures for Left and Right Rear Camera on the lightbar pylons. **This is a required view for vehicles in the FNOL program.** If the cab mount option is chosen, it will use a wired camera connection. For flatbeds with moving lightbars and pylons, a wireless transmitter must also be mounted along with the lightbar/pylon camera and power tapped from flatbed rolloff lighting power.

Mounting Examples



Right Pylon



Left Pylon

Sample Camera Views



Right Pylon

Left Pylon

Installation Steps

- 1) Choose a stable mounting location high up and outboard on driver and passenger side pylons. Cameras should be mounted as high as possible for good viewpoints.
- 2) Position the camera in the chosen location and mark holes for mounting screws and for camera cable pass-through into vehicle.
- 3) Drill holes for self-tapping sheet metal screws and for the round camera connector.
- 4) Pass the round connector of the camera cable through the drilled hole from the inside to the outside and connect to the camera cable.
- 5) Mount the camera to the vehicle using sheet metal screws.
- 6) Do not tighten screws until camera has been aimed properly.
- 7) If the MDVR isn't powered up yet, don't securely tighten the camera aiming screws until the camera aiming step later.

This section intentionally blank

9.5. Winch Rear Camera Mount (FNOL) - Flatbed

This section describes the installation procedures for Winch Rear Camera to the winch bracket of a flatbed. **This is a required view for vehicles in the FNOL program.** A rugged bracket must be installed to the winch bracket for protection of the winch camera.

Mounting Example

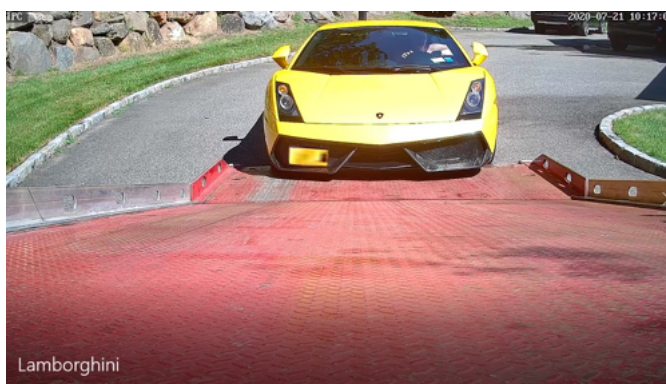


Winch Camera



**Outer Camera Bracket (Doghouse) and
Camera Mount Bracket**

Sample Camera View



Winch Camera

Installation Steps

- 1) Hold the doghouse next to the winch bracket and look for any available bolts which can be loosened and used to secure the doghouse. If none are found, determine if drilled holes or some tack welds could be used to secure the doghouse to the top of the winch bracket. Secure the doghouse.
- 2) Mount the camera bracket to the Camera Mount Bracket with sheet metal screws and place the bracket inside the doghouse.
- 3) Route the camera cable to the underside of the bed and connect to either the Coiled Ethernet Cable (single bed camera) or Ethernet Switch Module (multiple bed cameras) with a watertight Ethernet connector.
- 4) If the MDVR isn't powered up yet, don't securely tighten the camera aiming screws until the camera aiming step later.

This section intentionally blank

9.6. Low Center Left Rear Camera Mount (FNOL) – Wheellift

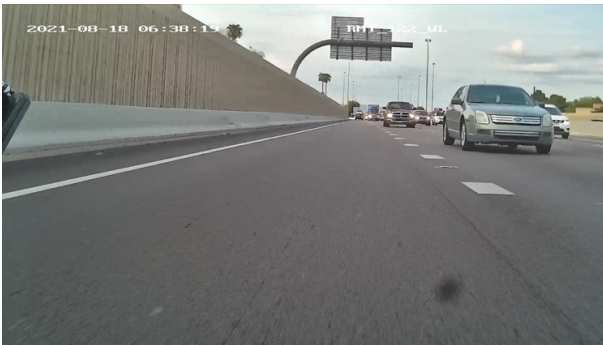
This section describes the installation procedures for Exterior Rear Camera on a wheellift vehicle.

Mounting Examples



Low Center Left Rear

Sample Camera Views



No vehicle



Loaded vehicle

Installation Steps

- 1) Position the camera in the chosen location and mark holes for mounting screws and for camera cable pass-through into vehicle.

- 2) Drill holes for self-tapping sheet metal screws and for the camera connector.
- 3) Mount the camera to the vehicle using sheet metal screws.
- 4) If the MDVR isn't powered up yet, don't securely tighten the camera aiming screws until the camera aiming step later.

This section intentionally blank