



## SAR TEST REPORT

For

Foxi Finder Systems LTD

Infinity IoT

Test Model: Infinity Watch

Additional Model No.: Infinity Box, Infinity Box 2

Prepared for : Foxi Finder Systems LTD  
Address : Nahal Sorek 48, Kfar Yona, Israel

Prepared by : Shenzhen LCS Compliance Testing Laboratory Ltd.  
Address : 101, 201 Bldg A & 301 Bldg C, Juji Industrial Park  
Yabianxueziwei, Shajing Street, Baoan District, Shenzhen,  
518000, China

Tel : (86)755-82591330  
Fax : (86)755-82591332  
Web : www.LCS-cert.com  
Mail : webmaster@LCS-cert.com

Date of receipt of test sample : August 10, 2021  
Number of tested samples : 1  
Serial number : Prototype  
Date of Test : August 10, 2021~August 28, 2021  
Date of Report : August 30, 2021

**SAR TEST REPORT****Report Reference No. ....: LCS210817022AEB****Date Of Issue.....: August 30, 2021****Testing Laboratory Name .....: Shenzhen LCS Compliance Testing Laboratory Ltd.****Address.....: 101, 201 Bldg A & 301 Bldg C, Juji Industrial Park  
Yabianxueziwei, Shajing Street, Baoan District, Shenzhen, 518000,  
China****Testing Location/ Procedure .....: Full application of Harmonised standards ■  
Partial application of Harmonised standards □  
Other standard testing method □****Applicant's Name .....: Foxi Finder Systems LTD****Address.....: Nahal Sorek 48, Kfar Yona, Israel****Test Specification:****Standard .....: IEEE Std C95.1, 2019/IEEE Std 1528™-2013/ FCC Part 2.1093****Test Report Form No. ....: LCSEMC-1.0****TRF Originator.....: Shenzhen LCS Compliance Testing Laboratory Ltd.****Master TRF .....: Dated 2014-09****Shenzhen LCS Compliance Testing Laboratory Ltd. All rights reserved.**

This publication may be reproduced in whole or in part for non-commercial purposes as long as the Shenzhen LCS Compliance Testing Laboratory Ltd. is acknowledged as copyright owner and source of the material. Shenzhen LCS Compliance Testing Laboratory Ltd. takes no responsibility for and will not assume liability for damages resulting from the reader's interpretation of the reproduced material due to its placement and context.

**Test Item Description.....: Infinity IoT****Trade Mark.....: /****Test Model .....: Infinity Watch****Operation Frequency .....: GSM850/1900,WCDMA Band V/II, WIFI2.4G  
and LTE 2,4,7,17,41****Ratings .....: DC 5V  
Or  
DC 3.7V 600mAh 2.22Wh Battery****Result .....: Positive****Compiled by:**

Ping Li

Ping Li/ File administrators

**Supervised by:**

Jin Wang

Jin Wang/ Technique principal

**Approved by:**

Gavin Liang/ Manager



## SAR -- TEST REPORT

<b>Test Report No. :</b> <b>LCS210817022AEB</b>	<u>August 30, 2021</u> Date of issue
---	---

Test Model.....	: Infinity Watch
EUT.....	: Infinity IoT
<b>Applicant.....</b>	<b>: Foxi Finder Systems LTD</b>
Address.....	: Nahal Sorek 48, Kfar Yona, Israel
Telephone.....	: /
Fax.....	: /
<b>Manufacturer.....</b>	<b>: Foxi Finder Systems LTD</b>
Address.....	: Nahal Sorek 48, Kfar Yona, Israel
Telephone.....	: /
Fax.....	: /
<b>Factory.....</b>	<b>: Foxi Finder Systems LTD</b>
Address.....	: Nahal Sorek 48, Kfar Yona, Israel
Telephone.....	: /
Fax.....	: /

<b>Test Result</b>	<b>Positive</b>
--------------------	-----------------

The test report merely corresponds to the test sample.

It is not permitted to copy extracts of these test result without the written permission of the test laboratory.



## Revision History

Revision	Issue Date	Revisions	Revised By
000	August 30, 2021	Initial Issue	Gavin Liang



## TABLE OF CONTENTS

<b>1. TEST STANDARDS AND TEST DESCRIPTION.....</b>	<b>6</b>
1.1. TEST STANDARDS .....	6
1.2. TEST DESCRIPTION.....	6
1.3. GENERAL REMARKS .....	6
1.4. PRODUCT DESCRIPTION .....	6
1.5. STATEMENT OF COMPLIANCE .....	8
<b>2. TEST ENVIRONMENT .....</b>	<b>10</b>
2.1. TEST FACILITY.....	10
2.2. ENVIRONMENTAL CONDITIONS .....	10
2.3. SAR LIMITS .....	10
2.4. EQUIPMENTS USED DURING THE TEST .....	11
<b>3. SAR MEASUREMENTS SYSTEM CONFIGURATION .....</b>	<b>12</b>
3.1. SARMEASUREMENT SET-UP.....	12
3.2. OPENSAR E-FIELD PROBE SYSTEM.....	13
3.3. PHANTOMS.....	14
3.4. DEVICE HOLDER .....	14
3.5. SCANNING PROCEDURE .....	15
3.6. DATA STORAGE AND EVALUATION.....	16
3.7. POSITION OF THE WIRELESS DEVICE IN RELATION TO THE PHANTOM.....	17
3.8. TISSUE DIELECTRIC PARAMETERS FOR HEAD AND BODY PHANTOMS .....	18
3.9. TISSUE EQUIVALENT LIQUID PROPERTIES .....	18
3.10. SYSTEM CHECK .....	19
3.11. SAR MEASUREMENT PROCEDURE .....	22
3.12. POWER REDUCTION .....	27
3.13. POWER DRIFT .....	27
<b>4. TEST CONDITIONS AND RESULTS.....</b>	<b>28</b>
4.1. CONDUCTED POWER RESULTS .....	28
4.2. TRANSMIT ANTENNA .....	42
4.3. SAR MEASUREMENT RESULTS .....	43
4.4. STANDALONE SAR TEST EXCLUSION CONSIDERATIONS AND ESTIMATED SAR.....	45
4.5. SIMULTANEOUS TX SAR CONSIDERATIONS .....	45
4.6. SAR MEASUREMENT VARIABILITY .....	48
4.7. GENERAL DESCRIPTION OF TEST PROCEDURES .....	49
4.8. MEASUREMENT UNCERTAINTY (300MHZ-6GHZ).....	49
4.9. SYSTEM CHECK RESULTS .....	50
4.10. SAR TEST GRAPH RESULTS.....	56
<b>5. CALIBRATION CERTIFICATES .....</b>	<b>72</b>
5.1 PROBE-EPGO324 CALIBRATION CERTIFICATE.....	72
5.2 SID750DIPOLE CALIBRATION CERITICATE.....	82
5.3 SID835DIPOLE CALIBRATION CERITICATE.....	93
5.4 SID1900 DIPOLE CALIBRATION CERTIFICATE.....	104
5.5 SID2450 DIPOLE CALIBRATION CERITICATE.....	<u>123</u>
5.6 SID2600 DIPOLE CALIBRATION CERITICATE.....	<u>134</u>
<b>6. EUT TEST PHOTOGRAPHS .....</b>	<b><u>145</u></b>
<b>7.EUT PHOTOGRAPHS .....</b>	<b><u>147</u></b>



# 1. TEST STANDARDS AND TEST DESCRIPTION

## 1.1. Test Standards

[IEEE Std C95.1, 2019](#): IEEE Standard for Safety Levels with Respect to Human Exposure to Electric, Magnetic, and Electromagnetic Fields, 0 Hz to 300 GHz. It specifies the maximum exposure limit of 1.6 W/kg as averaged over any 1 gram of tissue for portable devices being used within 20 cm of the user in the uncontrolled environment.

[IEEE Std 1528™-2013](#): IEEE Recommended Practice for Determining the Peak Spatial-Average Specific Absorption Rate (SAR) in the Human Head from Wireless Communications Devices: Measurement Techniques.

[FCC Part 2.1093 Radiofrequency Radiation Exposure Evaluation](#): Portable Devices

[KDB447498 D01 General RF Exposure Guidance v06](#): Mobile and Portable Device RF Exposure Procedures and Equipment Authorization Policies

[KDB648474 D04, Handset SAR v01r03](#): SAR Evaluation Considerations for Wireless Handsets

[KDB865664 D01 SAR Measurement 100 MHz to 6 GHz v01r04](#): SAR Measurement Requirements for 100 MHz to 6 GHz

[KDB865664 D02 RF Exposure Reporting v01r02](#): RF Exposure Compliance Reporting and Documentation Considerations

[KDB941225 D01 3G SAR Procedures v03r01](#): 3G SAR MEAUREMENT PROCEDURES

[KDB248227 D01 802.11 Wi-Fi SAR](#): SAR Guidance For IEEE 802.11 (Wi-Fi) Transmitters

[KDB 941225 D06 Hotspot Mode](#): SAR Evaluation Procedures For Portable Devices With Wireless Router Capabilities

## 1.2. Test Description

The EUT battery must be fully charged and checked periodically during the test to ascertain uniform power. And Test device is identical prototype.

## 1.3. General Remarks

Date of receipt of test sample	:	August 10, 2021
Testing commenced on	:	August 10, 2021
Testing concluded on	:	August 28, 2021

## 1.4. Product Description

The Foxi Finder Systems LTD's Model: Infinity Watch or the "EUT" as referred to in this report; more general information as follows, for more details, refer to the user's manual of the EUT.

General Description	
Product Name:	Infinity IoT
Model/Type reference:	Infinity Watch
Listed Model(s):	Infinity Box, Infinity Box 2
Model Declaration:	PCB board, structure and internal of these model(s) are the same, So no additional models were tested
Modulation Type:	GMSK for GSM; QPSK for UMTS; QPSK, 16QAM for LTE
Device category:	Portable Device
Exposure category:	General population/uncontrolled environment
EUT Type:	Prototype
Hardware Version	/
Software Version:	/
Power supply:	DC 5V Or DC 3.7V 600mAh 2.22Wh Battery
The EUT is GSM, WCDMA, LTE kids Smartwatch. the Infinity Watch is equipped with GSM850, GSM1900, WCDMA Band II, LTE 2, 4, 7, 17 WiFi 2.4G, functions. For more information see the following datasheet	



Technical Characteristics	
GSM	
Operation Frequency Band:	GSM850/PCS1900
Modulation Type:	GMSK for GSM
GSM/EDGE/GPRS:	Supported GSM
GSM Release Version:	R99
GPRS/EDGE Multislot Class:	/
Antenna Description:	Integral Antenna; 0.81dBi (max.) For GSM 850; 0.81dBi (max.) For PCS 1900.
UMTS	
Support Networks	WCDMA: QPSK
Support Band:	WCDMA Band II
Modulation Type:	WCDMA: QPSK
WCDMA Release Version:	R8
DC-HSUPA Release Version:	Not Supported
Antenna Description:	Integral Antenna; 0.81dBi (max.) For WCDMA Band II;
LTE	
Support Band:	LTE FDD band 2, 4, 7, 17
Power Class:	Class 3
Modulation Type:	QPSK, 16QAM for LTE
LTE Release Version:	R9
Antenna Description:	Integral Antenna; 0.81dBi (max.) For E-UTRA Band 2; 0.81dBi (max.) For E-UTRA Band 4; 0.81dBi (max.) For E-UTRA Band 7; 0.81dBi (max.) For E-UTRA Band 17;
Bluetooth	
Version:	Supported BT V4.2
Modulation:	GFSK for Bluetooth V4.2(BT LE)
Operation frequency:	2402MHz~2480MHz
Channel number:	40
Channel Spacing:	2MHz
Antenna Description:	Integral Antenna, 1.03dBi(Max.)
WIFI 2.4G	
Frequency Range:	2412MHz ~ 2462MHz
Type of Modulation:	802.11b: DSSS; 802.11g/n: OFDM
Channel Number:	11 Channel for 20MHz bandwidth(2412~2462MHz)
Channel separation:	5MHz
Antenna Description	Integral Antenna, 1.03dBi(Max.)



## 1.5. Statement of Compliance

The maximum of results of SAR found during testing for Infinity Watch are follows:

<Highest Reported standalone SAR Summary>

### Next – to – Mouth Exposure Conditions - Flat / Front (10mm)

Classment Class	Frequency Band	Highest Reported SAR <sub>1-g</sub> (W/Kg)	SAR <sub>1-g</sub> Limit
PCT	GSM 850	0.079	1.6
	GSM1900	0.024	
	WCDMA Band II	0.043	
	LTE Band 2	0.055	
	LTE Band 4	0.033	
	LTE Band 7	0.126	
	LTE Band 17	<b>0.324</b>	
DTS	WIFI2.4G	0.015	

### Extremity Exposure Conditions - Flat / Rear (0mm)

Classment Class	Frequency Band	Highest Reported SAR <sub>10-g</sub> (W/Kg)	SAR <sub>10-g</sub> Limit
PCT	GSM 850	0.505	4.0
	GSM1900	0.749	
	WCDMA Band II	1.524	
	LTE Band 2	<b>1.990</b>	
	LTE Band 4	1.901	
	LTE Band 7	1.916	
	LTE Band 17	1.394	
DTS	WIFI2.4G	0.783	

This device is in compliance with Specific Absorption Rate (SAR) for general population/uncontrolled exposure limits (1.6 W/kg for 1g) for Next – to Mouth Exposure – Flat/Front (10mm) and Extremity Exposure limit (4.0W/Kg for 10g) specified in FCC 47 CFR part 2 (2.1093) and ANSI/IEEE C95.1-2005, and had been tested in accordance with the measurement methods and procedures specified in IEEE 1528-2013. The EUT battery must be fully charged and checked periodically during the test to ascertain iniform power output





<Highest Reported simultaneous SAR Summary>

**Next – to – Mouth Exposure Conditions - Flat / Front (10mm)**

Exposure Position	Frequency Band	Reported SAR <sub>1-g</sub> (W/kg)	Classment Class	Highest Reported Simultaneous Transmission SAR <sub>1-g</sub> (W/Kg)
Next – to - Mouth	LTE Band 17	0.324	PCT	0.339
	WIFI2.4G	0.015	DTS	

**Extremity Exposure Conditions - Flat / Rear (0mm)**

Exposure Position	Frequency Band	Reported SAR <sub>10-g</sub> (W/kg)	Classment Class	Highest Reported Simultaneous Transmission SAR <sub>10-g</sub> (W/Kg)
Extremity Exposure	LTE Band 2	1.990	PCT	2.773
	WIFI2.4G	0.783	DTS	



## 2. TEST ENVIRONMENT

### 2.1. Test Facility

The test facility is recognized, certified, or accredited by the following organizations:

Site Description

EMC Lab. : NVLAP Accreditation Code is 600167-0.  
FCC Designation Number is CN5024.  
CAB identifier is CN0071.  
CNAS Registration Number is L4595.

### 2.2. Environmental conditions

During the measurement the environmental conditions were within the listed ranges:

Temperature:	18-25 ° C
Humidity:	40-65 %
Atmospheric pressure:	950-1050mbar

### 2.3. SAR Limits

EXPOSURE LIMITS	FCC Limit (1g Tissue)	
	SAR (W/kg)	
	(General Population / Uncontrolled Exposure Environment)	(Occupational / Controlled Exposure Environment)
Spatial Average(averaged over the whole body)	0.08	0.4
Spatial Peak(averaged over any 1 g of tissue)	1.6	8.0
Spatial Peak(hands/wrists/ feet/anklesaveraged over 10 g)	4.0	20.0

Population/Uncontrolled Environments are defined as locations where there is the exposure of individual who have no knowledge or control of their exposure.

Occupational/Controlled Environments are defined as locations where there is exposure that may be incurred by people who are aware of the potential for exposure (i.e. as a result of employment or occupation).



## 2.4. Equipments Used during the Test

Item	Equipment	Manufacturer	Model No.	Serial No.	Cal Date	Due Date
1	PC	Lenovo	G5005	MY42081102	N/A	N/A
2	SAR Measurement system	SATIMO	4014_01	SAR_4014_01	N/A	N/A
3	Signal Generator	Agilent	E4438C	MY49072627	2021-06-11	2022-06-10
4	Multimeter	Keithley	MiltiMeter 2000	4059164	2020-11-15	2021-11-14
5	S-parameter Network Analyzer	Agilent	8753ES	US38432944	2020-11-15	2021-11-14
6	Wideband Radio Communication Tester	R&S	CMW500	103818-1	2020-11-22	2021-11-21
7	E-Field PROBE	MVG	SSE2	SN 31/17 EPGO324	2020-10-07	2021-10-06
8	DIPOLE 750	SATIMO	SID 750	SN 30/14 DIP 0G750-302	2018-10-01	2021-09-30
9	DIPOLE 835	SATIMO	SID 835	SN 07/14 DIP 0G835-303	2018-10-01	2021-09-30
10	DIPOLE 1800	SATIMO	SID 1800	SN 07/14 DIP 1G800-301	2018-10-01	2021-09-30
11	DIPOLE 1900	SATIMO	SID 1900	SN 38/18 DIP 1G900-466	2018-09-24	2021-09-23
12	DIPOLE 2450	SATIMO	SID 2450	SN 07/14 DIP 2G450-306	2018-10-01	2021-09-30
13	DIPOLE 2600	SATIMO	SID 2600	SN 38/18 DIP 2G600-468	2018-09-24	2021-09-23
14	COMOSAR OPENCoaxial Probe	SATIMO	OCPG 68	SN 40/14 OCPG68	2020-11-15	2021-11-14
15	SAR Locator	SATIMO	VPS51	SN 40/14 VPS51	2020-11-15	2021-11-14
16	Communication Antenna	SATIMO	ANTA57	SN 39/14 ANTA57	2020-11-15	2021-11-14
17	FEATURE PHONEPOSITIONING DEVICE	SATIMO	MSH98	SN 40/14 MSH98	N/A	N/A
18	DUMMY PROBE	SATIMO	DP60	SN 03/14 DP60	N/A	N/A
19	SAM PHANTOM	SATIMO	SAM117	SN 40/14 SAM117	N/A	N/A
20	Liquid measurement Kit	HP	85033D	3423A03482	2020-11-15	2021-11-14
21	Power meter	Agilent	E4419B	MY45104493	2021-06-11	2022-06-10
22	Power meter	Agilent	E4419B	MY45100308	2020-11-22	2021-11-21
23	Power sensor	Agilent	E9301H	MY41495616	2020-11-22	2021-11-21
24	Power sensor	Agilent	E9301H	MY41495234	2021-06-11	2022-06-10
25	Directional Coupler	MCLI/USA	4426-20	03746	2021-06-11	2022-06-10

Note:

- 1) Per KDB865664D01 requirements for dipole calibration, the test laboratory has adopted three year extended calibration interval. Each measured dipole is expected to evaluate with following criteria at least on annual interval.
  - a) There is no physical damage on the dipole;
  - b) System check with specific dipole is within 10% of calibrated values;
  - c) The most recent return-loss results, measured at least annually, deviates by no more than 20% from the previous measurement;
  - d) The most recent measurement of the real or imaginary parts of the impedance, measured at least annually is within 5Ω from the previous measurement.
- 2) Network analyzer probe calibration against air, distilled water and a shorting block performed before measuring liquid parameters.



### 3. SAR MEASUREMENTS SYSTEM CONFIGURATION

#### 3.1. SAR Measurement Set-up

The OPENSAR system for performing compliance tests consist of the following items:

A standard high precision 6-axis robot (KUKA) with controller and software.

KUKA Control Panel (KCP)

A dosimetric probe, i.e., an isotropic E-field probe optimized and calibrated for usage in tissue simulating liquid. The probe is equipped with a Video Positioning System(VPS).

The stress sensor is composed with mechanical and electronic when the electronic part detects a change on the electro-mechanical switch, It sends an "Emergency signal" to the robot controller that to stop robot's moves

A computer operating Windows XP.

OPENSAR software

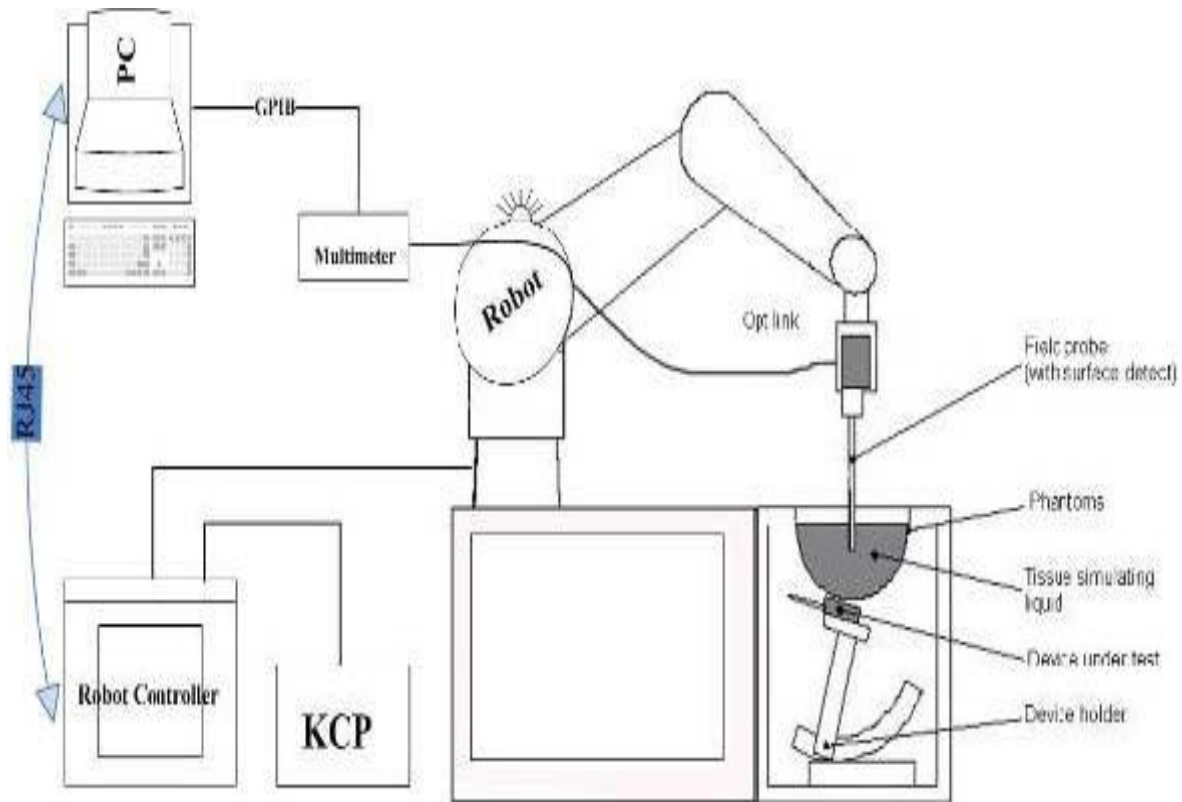
Remote control with teaches pendant and additional circuitry for robot safety such as warning lamps, etc.

The SAM phantom enabling testing left-hand right-hand and body usage.

The Position device for handheld EUT

Tissue simulating liquid mixed according to the given recipes .

System validation dipoles to validate the proper functioning of the system.





### 3.2. OPENSAR E-field Probe System

The SAR measurements were conducted with the dosimetric probe EPGO324 (manufactured by SATIMO), designed in the classical triangular configuration and optimized for dosimetric evaluation.

#### Probe Specification

Construction Symmetrical design with triangular core

Interleaved sensors

Built-in shielding against static charges

PEEK enclosure material (resistant to organic solvents, e.g., DGBE)

Calibration ISO/IEC 17025 calibration service available.

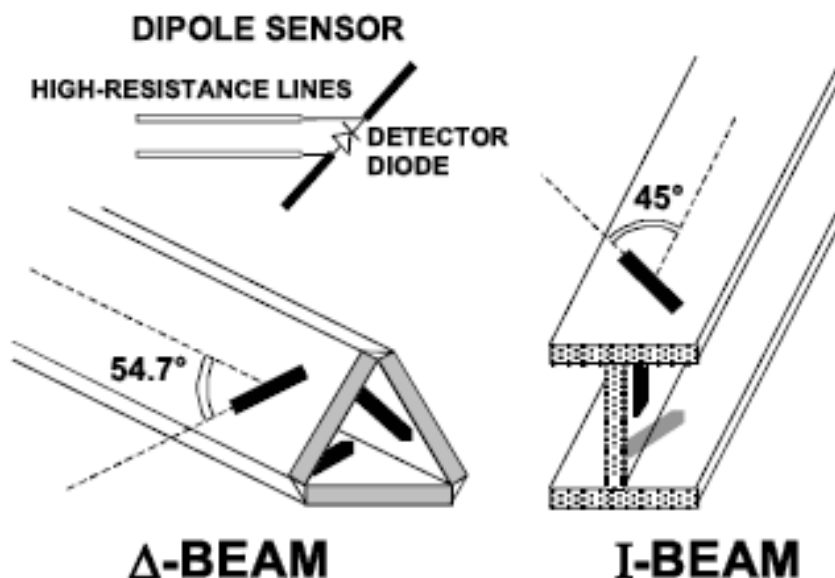
Frequency	450 MHz to 6 GHz; Linearity: 0.25 dB (450 MHz to 6 GHz)
Directivity	0.25 dB in HSL (rotation around probe axis) 0.5 dB in tissue material (rotation normal to probe axis)
Dynamic Range	0.01 W/kg to > 100 W/kg; Linearity: 0.25 dB
Dimensions	Overall length: 330 mm (Tip: 16 mm) Tip diameter: 5 mm (Body: 8 mm) Distance from probe tip to sensor centers: 2.5 mm
Application	General dosimetry up to 6 GHz Dosimetry in strong gradient fields Compliance tests of Mobile Phones



#### Isotropic E-Field Probe

The isotropic E-Field probe has been fully calibrated and assessed for isotropicity, and boundary effect within a controlled environment. Depending on the frequency for which the probe is calibrated the method utilized for calibration will change.

The E-Field probe utilizes a triangular sensor arrangement as detailed in the diagram below:

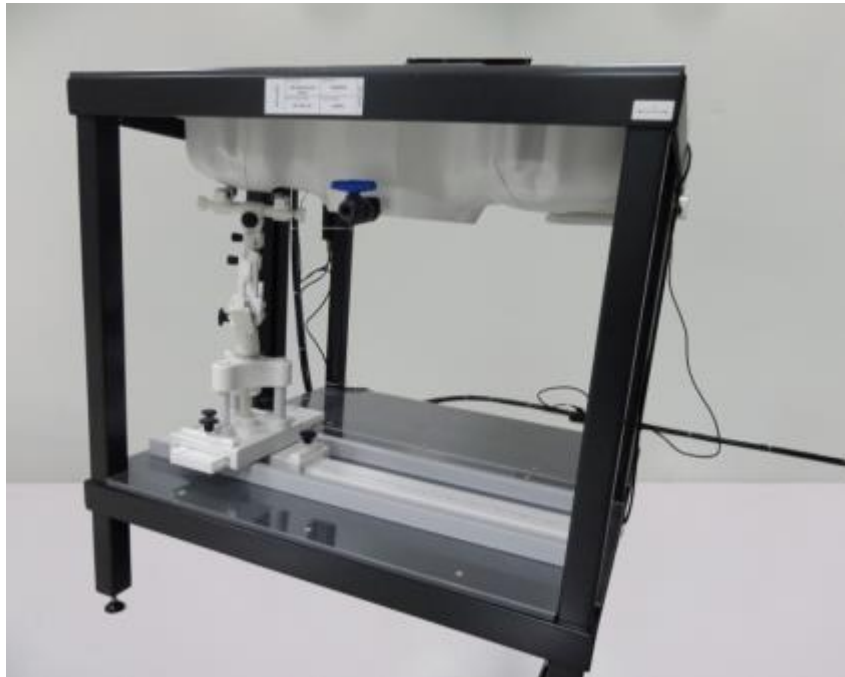




### 3.3. Phantoms

The SAM Phantom SAM117 is constructed of a fiberglass shell integrated in a wooden table. The shape of the shell is in compliance with the specification set in IEEE P1528 and CENELEC EN62209-1, EN62209-2:2010. The phantom enables the dosimetric evaluation of left and right hand phone usage as well as body mounted usage at the flat phantom region. A cover prevents the evaporation of the liquid. Reference markings on the Phantom allow the complete setup of all predefined phantom positions and measurement grids by manually teaching three points in the robot.

System checking was performed using the flat section, whilst Head SAR tests used the left and right head profile sections. Body SAR testing also used the flat section between the head profiles.



SAM Twin Phantom

### 3.4. Device Holder

In combination with the Generic Twin Phantom SAM117, the Mounting Device enables the rotation of the mounted transmitter in spherical coordinates whereby the rotation points is the ear opening. The devices can be easily, accurately, and repeatedly positioned according to the FCC and CENELEC specifications. The device holder can be locked at different phantom locations (left head, right head, flat phantom).



Device holder supplied by SATIMO





### 3.5. Scanning Procedure

The procedure for assessing the peak spatial-average SAR value consists of the following steps

#### Power Reference Measurement

The reference and drift jobs are useful jobs for monitoring the power drift of the device under test in the batch process. Both jobs measure the field at a specified reference position, at a selectable distance from the phantom surface. The reference position can be either the selected section's grid reference point or a user point in this section. The reference job projects the selected point onto the phantom surface, orients the probe perpendicularly to the surface, and approaches the surface using the selected detection method.

#### Area Scan

The Area Scan is used as a fast scan in two dimensions to find the area of high field values before running a detailed measurement around the hot spot. Before starting the area scan a grid spacing of 15 mm x 15 mm is set. During the scan the distance of the probe to the phantom remains unchanged. After finishing area scan, the field maxima within a range of 2 dB will be ascertained.

	≤ 3 GHz	> 3 GHz
Maximum distance from closest measurement point (geometric center of probe sensors) to phantom surface	5 mm ± 1 mm	$\frac{1}{2} \cdot \delta \cdot \ln(2)$ mm ± 0.5 mm
Maximum probe angle from probe axis to phantom surface normal at the measurement location	30° ± 1°	20° ± 1°
Maximum area scan spatial resolution: $\Delta x_{\text{Area}}, \Delta y_{\text{Area}}$	≤ 2 GHz: ≤ 15 mm 2 – 3 GHz: ≤ 12 mm	3 – 4 GHz: ≤ 12 mm 4 – 6 GHz: ≤ 10 mm
	When the x or y dimension of the test device, in the measurement plane orientation, is smaller than the above, the measurement resolution must be ≤ the corresponding x or y dimension of the test device with at least one measurement point on the test device.	

#### Zoom Scan

Zoom Scans are used to estimate the peak spatial SAR values within a cubic averaging volume containing 1 g and 10 g of simulated tissue. The default Zoom Scan is done by 7x7x7 points within a cube whose base is centered around the maxima found in the preceding area scan.

Maximum zoom scan spatial resolution: $\Delta x_{\text{Zoom}}, \Delta y_{\text{Zoom}}$			$\leq 2 \text{ GHz}: \leq 8 \text{ mm}$ $2 - 3 \text{ GHz}: \leq 5 \text{ mm}^*$	$3 - 4 \text{ GHz}: \leq 5 \text{ mm}^*$ $4 - 6 \text{ GHz}: \leq 4 \text{ mm}^*$
Maximum zoom scan spatial resolution, normal to phantom surface	uniform grid: $\Delta z_{\text{Zoom}}(n)$		$\leq 5 \text{ mm}$	$3 - 4 \text{ GHz}: \leq 4 \text{ mm}$ $4 - 5 \text{ GHz}: \leq 3 \text{ mm}$ $5 - 6 \text{ GHz}: \leq 2 \text{ mm}$
	graded grid	$\Delta z_{\text{Zoom}}(1)$ : between 1 <sup>st</sup> two points closest to phantom surface	$\leq 4 \text{ mm}$	$3 - 4 \text{ GHz}: \leq 3 \text{ mm}$ $4 - 5 \text{ GHz}: \leq 2.5 \text{ mm}$ $5 - 6 \text{ GHz}: \leq 2 \text{ mm}$
		$\Delta z_{\text{Zoom}}(n>1)$ : between subsequent points	$\leq 1.5 \cdot \Delta z_{\text{Zoom}}(n-1) \text{ mm}$	
Minimum zoom scan volume	x, y, z		$\geq 30 \text{ mm}$	$3 - 4 \text{ GHz}: \geq 28 \text{ mm}$ $4 - 5 \text{ GHz}: \geq 25 \text{ mm}$ $5 - 6 \text{ GHz}: \geq 22 \text{ mm}$
Note: $\delta$ is the penetration depth of a plane-wave at normal incidence to the tissue medium; see IEEE Std 1528-2013 for details.				
* When zoom scan is required and the <i>reported</i> SAR from the <i>area scan based 1-g SAR estimation</i> procedures of KDB Publication 447498 is $\leq 1.4 \text{ W/kg}$ , $\leq 8 \text{ mm}$ , $\leq 7 \text{ mm}$ and $\leq 5 \text{ mm}$ zoom scan resolution may be applied, respectively, for 2 GHz to 3 GHz, 3 GHz to 4 GHz and 4 GHz to 6 GHz.				



### Power Drift measurement

The drift job measures the field at the same location as the most recent reference job within the same procedure, and with the same settings. The drift measurement gives the field difference in dB from the reading conducted within the last reference measurement. Several drift measurements are possible for one reference measurement. This allows a user to monitor the power drift of the device under test within a batch process. In the properties of the Drift job, the user can specify a limit for the drift and have OPENSAR software stop the measurements if this limit is exceeded.

## 3.6. Data Storage and Evaluation

### Data Storage

The OPENSAR software stores the acquired data from the data acquisition electronics as raw data (in microvolt readings from the probe sensors), together with all necessary software parameters for the data evaluation (probe calibration data, liquid parameters and device frequency and modulation data) in measurement files. The software evaluates the desired unit and format for output each time the data is visualized or exported. This allows verification of the complete software setup even after the measurement and allows correction of incorrect parameter settings. For example, if a measurement has been performed with a wrong crest factor parameter in the device setup, the parameter can be corrected afterwards and the data can be re-evaluated.

The measured data can be visualized or exported in different units or formats, depending on the selected probe type ([V/m], [A/m], [°C], [mW/g], [mW/cm²], [dBrel], etc.). Some of these units are not available in certain situations or show meaningless results, e.g., a SAR output in a lossless media will always be zero. Raw data can also be exported to perform the evaluation with other software packages.

### Data Evaluation

The OPENSAR software automatically executes the following procedures to calculate the field units from the microvolt readings at the probe connector. The parameters used in the evaluation are stored in the configuration modules of the software:

Probe parameters:	- Sensitivity	Normi, ai0, ai1, ai2
	- Conversion factor	ConvFi
	- Diode compression point	Dcpi
Device parameters:	- Frequency	f
	- Crest factor	cf
Media parameters:	- Conductivity	σ
	- Density	ρ

These parameters must be set correctly in the software. They can be found in the component documents or they can be imported into the software from the configuration files issued for the OPENSAR components. In the direct measuring mode of the multimeter option, the parameters of the actual system setup are used. In the scan visualization and export modes, the parameters stored in the corresponding document files are used.

The first step of the evaluation is a linearization of the filtered input signal to account for the compression characteristics of the detector diode. The compensation depends on the input signal, the diode type and the DC-transmission factor from the diode to the evaluation electronics. If the exciting field is pulsed, the crest factor of the signal must be known to correctly compensate for peak power. The formula for each channel can be given as:

$$V_i = U_i + U_i^2 \cdot \frac{cf}{dcp_i}$$

With  $V_i$  = compensated signal of channel i (i = x, y, z)

$U_i$  = input signal of channel i (i = x, y, z)

cf = crest factor of exciting field

dcp\_i = diode compression point

From the compensated input signals the primary field data for each channel can be evaluated:

$$E - \text{fieldprobes : } E_i = \sqrt{\frac{V_i}{\text{Norm}_i \cdot \text{ConvF}}}$$

$$H - \text{fieldprobes : } H_i = \sqrt{V_i} \cdot \frac{a_{i0} + a_{i1}f + a_{i2}f^2}{f}$$

With  $V_i$  = compensated signal of channel i (i = x, y, z)

$\text{Norm}_i$  = sensor sensitivity of channel i (i = x, y, z)  
[mV/(V/m)²] for E-field Probes

ConvF = sensitivity enhancement in solution





$a_{ij}$  = sensor sensitivity factors for H-field probes  
 $f$  = carrier frequency [GHz]  
 $E_i$  = electric field strength of channel  $i$  in V/m  
 $H_i$  = magnetic field strength of channel  $i$  in A/m

The RSS value of the field components gives the total field strength (Hermitian magnitude):

$$E_{tot} = \sqrt{E_x^2 + E_y^2 + E_z^2}$$

The primary field data are used to calculate the derived field units.

$$SAR = E_{tot}^2 \cdot \frac{\sigma}{\rho \cdot 1'000}$$

with  $SAR$  = local specific absorption rate in mW/g  
 $E_{tot}$  = total field strength in V/m  
 $\sigma$  = conductivity in [mho/m] or [Siemens/m]  
 $\rho$  = equivalent tissue density in g/cm<sup>3</sup>

Note that the density is normally set to 1 (or 1.06), to account for actual brain density rather than the density of the simulation liquid.

### 3.7. Position of the wireless device in relation to the phantom

Per KDB 447498 Section 6.2. Wrist watch and wrist-worn transmitters: Transmitters that are built-in within a wrist watch or similar wrist-worn devices typically operate in speaker mode for voice communication, with the device worn on the wrist and positioned next to the mouth. Next to the mouth exposure requires 1-g SAR and the wrist-worn condition requires 10-g extremity SAR.<sup>58</sup> The 10-g extremity and 1-g SAR test exclusions may be applied to the wrist and face exposure conditions. When SAR evaluation is required, next to the mouth use is evaluated with the front of the device positioned at 10 mm from a flat phantom filled with head tissue-equivalent medium. The wrist bands should be strapped together to represent normal use conditions. SAR for wrist exposure is evaluated with the back of the device positioned in direct contact against a flat phantom filled with body tissue-equivalent medium. The wrist bands should be unstrapped and touching the phantom. The space introduced by the watch or wrist bands and the phantom must be representative of actual use conditions; otherwise, if applicable, the neck or a curved head region of the SAM phantom may be used, provided the device positioning and SAR probe access issues have been addressed through a KDB inquiry. When other device positioning and SAR measurement considerations are necessary, a KDB inquiry is also required for the test results to be acceptable; for example, devices with rigid wrist bands or electronic circuitry and/or antenna(s) incorporated in the wrist bands. These test configurations are applicable only to devices that are worn on the wrist and cannot support other use conditions; therefore, the operating restrictions must be fully demonstrated in both the test reports and user manuals.



### 3.8. Tissue Dielectric Parameters for Head and Body Phantoms

The liquid is consisted of water,salt,Glycol,Sugar,Preventol and Cellulose.The liquid has previously been proven to be suited for worst-case.It's satisfying the latest tissue dielectric parameters requirements proposed by the KDB865664.

The composition of the tissue simulating liquid

Ingredient (% Weight)	750MHz		835MHz		1800 MHz		1900 MHz		2450MHz		2600MHz		5000MHz	
	Head	Body	Head	Body	Head	Body	Head	Body	Head	Body	Head	Body	Head	Body
Water	39.28	51.3	41.45	52.5	54.5	40.2	54.9	40.4	62.7	73.2	60.3	71.4	65.5	78.6
Preventol	0.10	0.10	0.10	0.10	0.00	0.00	0.00	0.00	0.00	0.00	0.00	0.00	0.00	0.00
HEC	1.00	1.00	1.00	1.00	0.00	0.00	0.00	0.00	0.00	0.00	0.00	0.00	0.00	0.00
DGBE	0.00	0.00	0.00	0.00	45.33	59.31	44.92	59.10	36.80	26.70	39.10	28.40	0.00	0.00
Triton X-100	0.00	0.00	0.00	0.00	0.00	0.00	0.00	0.00	0.00	0.00	0.00	0.00	17.2	10.7

Target Frequency (MHz)	Head		Body	
	$\epsilon_r$	$\sigma(S/m)$	$\epsilon_r$	$\sigma(S/m)$
150	52.3	0.76	61.9	0.80
300	45.3	0.87	58.2	0.92
450	43.5	0.87	56.7	0.94
835	41.5	0.90	55.2	0.97
900	41.5	0.97	55.0	1.05
915	41.5	0.98	55.0	1.06
1450	40.5	1.20	54.0	1.30
1610	40.3	1.29	53.8	1.40
1800-2000	40.0	1.40	53.3	1.52
2450	39.2	1.80	52.7	1.95
2600	39.0	1.96	52.5	2.16
3000	38.5	2.40	52.0	2.73
5800	35.3	5.27	48.2	6.00

### 3.9. Tissue equivalent liquid properties

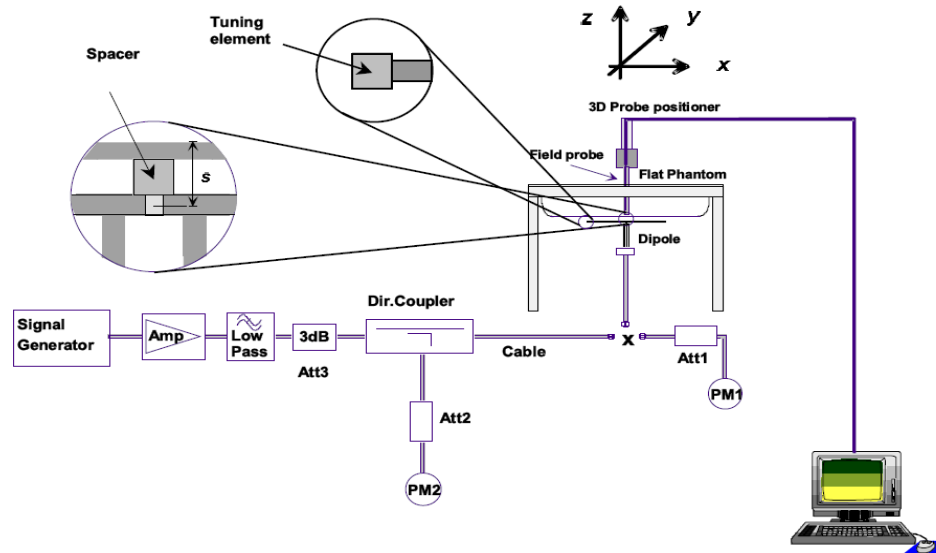
Dielectric Performance of Head and Body Tissue Simulating Liquid

Test Engineer: Ping Li									
Tissue Type	Measured Frequency (MHz)	Target Tissue		Measured Tissue				Liquid Temp.	Test Data
		$\sigma$	$\epsilon_r$	$\sigma$	Dev.	$\epsilon_r$	Dev.		
750H	750	0.89	41.90	0.88	-1.12%	42.06	0.38%	20.1	08/10/2021
835H	835	0.90	41.50	0.92	2.22%	42.82	1.81%	21.4	08/14/2021
1800H	1800	1.40	40.00	1.43	2.14%	40.64	1.60%	21.5	08/18/2021
1900H	1900	1.40	40.00	1.37	-2.14%	38.56	-3.60%	22.3	08/20/2021
2450H	2450	1.80	39.20	1.84	2.22%	39.70	1.28%	23.3	08/25/2021
2600H	2600	1.96	39.00	1.92	-2.04%	38.43	-1.46%	21.0	08/28/2021



### 3.10. System Check

The purpose of the system check is to verify that the system operates within its specifications at the device test frequency. The system check is a simple check of repeatability to make sure that the system works correctly at the time of the compliance test; System check results have to be equal or near the values determined during dipole calibration with the relevant liquids and test system ( $\pm 10\%$ ).



The output power on dipole port must be calibrated to 20 dBm (100mW) before dipole is connected.



Photo of Dipole Setup

**Justification for Extended SAR Dipole Calibrations**

Referring to KDB 865664D01V01r04, if dipoles are verified in return loss (<-20dB, within 20% of prior calibration), and in impedance (within 5 ohm of prior calibration), the annual calibration is not necessary and the calibration interval can be extended. While calibration intervals not exceed 3 years.

SID750 SN 07/14 DIP 0G750-302 Extend Dipole Calibrations

Date of Measurement	Return-Loss (dB)	Delta (%)	Real Impedance (ohm)	Delta (ohm)	Imaginary Impedance (ohm)	Delta (ohm)
2018-10-01	-34.80		50.7		1.6	
2019-10-01	-34.35	-1.29	51.2	0.5	1.5	-0.1
2020-10-01	-34.42	-1.09	51.3	0.4	1.5	-0.1

SID835 SN 07/14 DIP 0G835-303 Extend Dipole Calibrations

Date of Measurement	Return-Loss (dB)	Delta (%)	Real Impedance (ohm)	Delta (ohm)	Imaginary Impedance (ohm)	Delta (ohm)
2018-10-01	-24.49		54.9		2.8	
2019-10-01	-24.17	-1.31	54.5	-0.4	2.6	-0.2
2020-10-01	-24.20	-1.18	54.2	-0.7	2.5	-0.3

SID1800 SN 30/14 DIP 1G800-301 Extend Dipole Calibrations

Date of Measurement	Return-Loss (dB)	Delta (%)	Real Impedance (ohm)	Delta (ohm)	Imaginary Impedance (ohm)	Delta (ohm)
2018-10-01	-20.26		43.1		6.9	
2019-10-01	-20.13	-0.64	42.9	-0.2	6.7	-0.2
2020-10-01	-20.15	-0.54	42.8	-0.3	6.6	-0.3

SID1900 SN 38/18 DIP 1G900-466 Extend Dipole Calibrations

Date of Measurement	Return-Loss (dB)	Delta (%)	Real Impedance (ohm)	Delta (ohm)	Imaginary Impedance (ohm)	Delta (ohm)
2018-09-01	-26.43		50.5		4.7	
2019-09-01	-26.33	-0.38	50.2	-0.3	4.5	-0.2
2020-09-01	-26.40	-0.11	50.1	-0.4	4.6	-0.1

SID2450 SN 07/14 DIP 2G450-306 Extend Dipole Calibrations

Date of Measurement	Return-Loss (dB)	Delta (%)	Real Impedance (ohm)	Delta (ohm)	Imaginary Impedance (ohm)	Delta (ohm)
2018-10-01	-25.59		44.7		-1.1	
2019-10-01	-25.68	0.35	44.8	0.1	-1.0	0.1
2020-10-01	-25.70	0.43	44.5	-0.2	-1.1	0.0

SID2600 SN 38/18 DIP 2G600-468 Extend Dipole Calibrations

Date of Measurement	Return-Loss (dB)	Delta (%)	Real Impedance (ohm)	Delta (ohm)	Imaginary Impedance (ohm)	Delta (ohm)
2018-09-24	-29.14		49.2		3.4	
2019-09-24	-29.12	-0.07	49.1	-0.1	3.2	-0.2
2020-09-24	-29.10	-0.07	49.2	0.0	3.3	-0.1



Mixture Type	Frequency (MHz)	Power	SAR <sub>1g</sub> (W/kg)	SAR <sub>10g</sub> (W/kg)	Drift (%)	1W Target		Difference percentage		Liquid Temp	Date
						SAR <sub>1g</sub> (W/kg)	SAR <sub>10g</sub> (W/kg)	1g	10g		
Head	750	100 mW	0.877	0.578	-1.44	8.38	5.53	4.65%	4.52%	20.1	08/10/2021
		Normalize to 1 Watt	8.77	5.78							
Head	835	100 mW	0.923	0.639	2.03	9.60	6.20	-3.85%	3.06%	21.4	08/14/2021
		Normalize to 1 Watt	9.23	6.39							
Head	1800	100 mW	3.853	2.055	1.62	38.13	20.20	1.05%	1.73%	21.5	08/18/2021
		Normalize to 1 Watt	38.53	20.55							
Head	1900	100 mW	3.911	2.096	-1.20	40.03	20.55	-2.30%	2.00%	22.3	08/20/2021
		Normalize to 1 Watt	39.11	20.96							
Head	2450	100 mW	5.487	2.521	-0.08	53.89	24.15	1.82%	4.39%	23.3	08/25/2021
		Normalize to 1 Watt	54.87	25.21							
Head	2600	100 mW	5.747	2.246	3.14	56.91	24.69	0.98%	-9.03%	21.0	08/28/2021
		Normalize to 1 Watt	57.47	22.46							



### 3.11. SAR measurement procedure

The measurement procedures are as follows:

#### 3.11.1 Conducted power measurement

- For WWAN power measurement, use base station simulator connection with RF cable, at maximum power in each supported wireless interface and frequency band.
- Read the WWAN RF power level from the base station simulator.
- For BT power measurement, use engineering software to configure EUT BT continuously Transmission, at maximum RF power in each supported wireless interface and frequency band.
- Connect EUT RF port through RF cable to the power meter, and measure BT output power.

#### 3.11.2 UMTS Test Configuration

##### 3G SAR Test Reduction Procedure

In the following procedures, the mode tested for SAR is referred to as the primary mode. The equivalent modes considered for SAR test reduction are denoted as secondary modes. Both primary and secondary modes must be in the same frequency band. When the maximum output power and tune-up tolerance specified for production units in a secondary mode is  $\leq \frac{1}{4}$  dB higher than the primary mode or when the highest reported SAR of the primary mode is scaled by the ratio of specified maximum output power and tune-up tolerance of secondary to primary mode and the adjusted SAR is  $\leq 1.2$  W/kg, SAR measurement is not required for the secondary mode.<sup>3</sup> This is referred to as the 3G SAR test reduction procedure in the following SAR test guidance, where the primary mode is identified in the applicable wireless mode test procedures and the secondary mode is wireless mode being considered for SAR test reduction by that procedure. When the 3G SAR test reduction procedure is not satisfied, it is identified as “otherwise” in the applicable procedures; SAR measurement is required for the secondary mode.

##### Output power Verification

Maximum output power is verified on the high, middle and low channels according to procedures described in section 5.2 of 3GPP TS 34.121, using the appropriate RMC or AMR with TPC (transmit power control) set to all “1’s” for WCDMA/HSDPA or by applying the required inner loop power control procedures to maintain maximum output power while HSUPA is active. Results for all applicable physical channel configurations (DPCCH, DPDCHn and spreading codes, HSDPA, HSPA) are required in the SAR report. All configurations that are not supported by the handset or cannot be measured due to technical or equipment limitations must be clearly identified.

##### Head SAR

SAR for next to the ear head exposure is measured using a 12.2 kbps RMC with TPC bits configured to all “1’s”. The 3G SAR test reduction procedure is applied to AMR configurations with 12.2 kbps RMC as the primary mode. Otherwise, SAR is measured for 12.2 kbps AMR in 3.4 kbps SRB (signaling radio bearer) using the highest reported SAR configuration in 12.2 kbps RMC for head exposure.

##### 1) Body-Worn Accessory SAR

SAR for body-worn accessory configurations is measured using a 12.2 kbps RMC with TPC bits configured to all “1’s”. The 3G SAR test reduction procedure is applied to other spreading codes and multiple DPDCHn configurations supported by the handset with 12.2 kbps RMC as the primary mode. Otherwise, SAR is measured using an applicable RMC configuration with the corresponding spreading code or DPDCHn, for the highest reported body-worn accessory exposure SAR configuration in 12.2 kbps RMC. When more than 2 DPDCHn are supported by the handset, it may be necessary to configure additional DPDCHn using FTM (Factory Test Mode) or other chipset based test approaches with parameters similar to those used in 384 kbps and 768 kbps RMC.

##### 2) Handsets with Release 5 HSDPA

The 3G SAR test reduction procedure is applied to HSDPA body-worn accessory configurations with 12.2 kbps RMC as the primary mode. Otherwise, SAR is measured for HSDPA using the HSDPA body SAR procedures in the “Release 5 HSDPA Data Devices” section of this document, for the highest reported SAR body-worn accessory exposure configuration in 12.2 kbps RMC. Handsets with both HSDPA and HSUPA are tested according to Release 6 HSPA test procedures.

HSDPA should be configured according to the UE category of a test device. The number of HSDSCH/ HS-PDSCHs, HARQ processes, minimum inter-TTI interval, transport block sizes and RV coding sequence are defined by the H-set. To maintain a consistent test configuration and stable transmission conditions, QPSK is



used in the H-set for SAR testing. HS-DPCCH should be configured with a CQI feedback cycle of 4 ms with a CQI repetition factor of 2 to maintain a constant rate of active CQI slots. DPCCH and DPDCH gain factors ( $\beta_c$ ,  $\beta_d$ ), and HS-DPCCH power offset parameters ( $\Delta_{ACK}$ ,  $\Delta_{NACK}$ ,  $\Delta_{CQI}$ ) should be set according to values indicated in the Table below. The CQI value is determined by the UE category, transport block size, number of HS-PDSCHs and modulation used in the H-set

**Table 2: Subtests for UMTS Release 5 HSDPA**

Sub-set	$\beta_c$	$\beta_d$	$\beta_d$ (SF)	$\beta_c/\beta_d$	$\beta_{hs}$ (note 1, note 2)	CM(dB) (note 3)	MPR(dB)
1	2/15	15/15	64	2/15	4/15	0.0	0.0
2	12/15 (note 4)	15/15 (note 4)	64	12/15 (note 4)	24/15	1.0	0.0
3	15/15	8/15	64	15/8	30/15	1.5	0.5
4	15/15	4/15	64	15/4	30/15	1.5	0.5

Note1:  $\Delta_{ACK}$ ,  $\Delta_{NACK}$  and  $\Delta_{CQI} = 8 \Leftrightarrow A_{hs} = \beta_{hs}/\beta_c = 30/15 \Leftrightarrow \beta_{hs} = 30/15 * \beta_c$   
Note2: CM=1 for  $\beta_c/\beta_d = 12/15$ ,  $\beta_{hs}/\beta_c = 24/15$ .  
Note3: For subtest 2 the  $\beta_c/\beta_d$  ratio of 12/15 for the TFC during the measurement period (TF1, TF0) is achieved by setting the signaled gain factors for the reference TFC (TFC1, TF1) to  $\beta_c = 11/15$  and  $\beta_d = 15/15$ .

### HSUPA Test Configuration

The 3G SAR test reduction procedure is applied to HSPA (HSUPA/HSDPA with RMC) body-worn accessory configurations with 12.2 kbps RMC as the primary mode. Otherwise, SAR is measured for HSPA using the HSPA body SAR procedures in the "Release 6 HSPA Data Devices" section of this document, for the highest reported body-worn accessory exposure SAR configuration in 12.2 kbps RMC. When VOIP is applicable for next to the ear head exposure in HSPA, the 3G SAR test reduction procedure is applied to HSPA with 12.2 kbps RMC as the primary mode; otherwise, the same HSPA configuration used for body-worn accessory measurements is tested for next to the ear head exposure.

Due to inner loop power control requirements in HSPA, a communication test set is required for output power and SAR tests. The 12.2 kbps RMC, FRC H-set 1 and E-DCH configurations for HSPA are configured according to the  $\beta$  values indicated in Table 2 and other applicable procedures described in the 'WCDMA Handset' and 'Release 5 HSDPA Data Devices' sections of this document

**Table 3: Sub-Test 5 Setup for Release 6 HSUPA**

Sub-set	$\beta_c$	$\beta_d$	$\beta_d$ (SF)	$\beta_c/\beta_d$	$\beta_{hs}^{(1)}$	$\beta_{ec}$	$\beta_{ed}$	$\beta_{ed}$ (SF)	$\beta_{ed}$ (codes)	CM <sup>(2)</sup> (dB)	MPR (dB)	AG <sup>(4)</sup> Index	E-TFCI
1	11/15 <sup>(3)</sup>	15/15 <sup>(3)</sup>	64	11/15 <sup>(3)</sup>	22/15	209/225	1039/225	4	1	1.0	0.0	20	75
2	6/15	15/15	64	6/15	12/15	12/15	94/75	4	1	3.0	2.0	12	67
3	15/15	9/15	64	15/9	30/15	30/15	$\beta_{ed1}^{(1)}: 47/15$ $\beta_{ed2}^{(2)}: 47/15$	4	2	2.0	1.0	15	92
4	2/15	15/15	64	2/15	4/15	2/15	56/75	4	1	3.0	2.0	17	71
5	15/15 <sup>(4)</sup>	15/15 <sup>(4)</sup>	64	15/15 <sup>(4)</sup>	30/15	24/15	134/15	4	1	1.0	0.0	21	81

Note 1:  $\Delta_{ACK}$ ,  $\Delta_{NACK}$  and  $\Delta_{CQI} = 8 \Leftrightarrow A_{hs} = \beta_{hs}/\beta_c = 30/15 \Leftrightarrow \beta_{hs} = 30/15 * \beta_c$ .

Note 2: CM = 1 for  $\beta_c/\beta_d = 12/15$ ,  $\beta_{hs}/\beta_c = 24/15$ . For all other combinations of DPDCH, DPCCH, HS-DPCCH, E-DPDCH and E-DPCCH the MPR is based on the relative CM difference.

Note 3: For subtest 1 the  $\beta_c/\beta_d$  ratio of 11/15 for the TFC during the measurement period (TF1, TF0) is achieved by setting the signaled gain factors for the reference TFC (TF1, TF1) to  $\beta_c = 10/15$  and  $\beta_d = 15/15$ .

Note 4: For subtest 5 the  $\beta_c/\beta_d$  ratio of 15/15 for the TFC during the measurement period (TF1, TF0) is achieved by setting the signaled gain factors for the reference TFC (TF1, TF1) to  $\beta_c = 14/15$  and  $\beta_d = 15/15$ .

Note 5: Testing UE using E-DPDCH Physical Layer category 1 Sub-test 3 is not required according to TS 25.306 Figure 5.1g.

Note 6:  $\beta_d$  can not be set directly; it is set by Absolute Grant Value.

### 3.11.3 WIFI Test Configuration

The SAR measurement and test reduction procedures are structured according to either the DSSS or OFDM transmission mode configurations used in each standalone frequency band and aggregated band. For devices that operate in exposure configurations that require multiple test positions, additional SAR test reduction may be applied. The maximum output power specified for production units, including tune-up tolerance, are used to determine initial SAR test requirements for the 802.11 transmission modes in a frequency band. SAR is measured using the highest measured maximum output power channel for the initial test configuration. SAR measurement and test reduction for the remaining 802.11 modes and test channels are determined according to





measured or specified maximum output power and reported SAR of the initial measurements. The general test reduction and SAR measurement approaches are summarized in the following:

1. The maximum output power specified for production units are determined for all applicable 802.11 transmission modes in each standalone and aggregated frequency band. Maximum output power is measured for the highest maximum output power configuration(s) in each frequency band according to the default power measurement procedures.
2. For OFDM transmission configurations in the 2.4 GHz and 5 GHz bands, an “initial test configuration” is first determined for each standalone and aggregated frequency band according to the maximum output power and tune-up tolerance specified for production units.
  - a. When the same maximum power is specified for multiple transmission modes in a frequency band, the largest channel bandwidth, lowest order modulation, lowest data rate and lowest order 802.11a/g/n/ac mode is used for SAR measurement, on the highest measured output power channel in the initial test configuration, for each frequency band.
  - b. SAR is measured for OFDM configurations using the initial test configuration procedures. Additional frequency band specific SAR test reduction may be considered for individual frequency bands
  - c. Depending on the reported SAR of the highest maximum output power channel tested in the initial test configuration, SAR test reduction may apply to subsequent highest output channels in the initial test configuration to reduce the number of SAR measurements.
3. The Initial test configuration does not apply to DSSS. The 2.4 GHz band SAR test requirements and 802.11b DSSS procedures are used to establish the transmission configurations required for SAR measurement.
4. An “initial test position” is applied to further reduce the number of SAR tests for devices operating in next to the ear, UMPC mini-tablet or hotspot mode exposure configurations that require multiple test positions .
  - a. SAR is measured for 802.11b according to the 2.4 GHz DSSS procedure using the exposure condition established by the initial test position.
  - b. SAR is measured for 2.4 GHz and 5 GHz OFDM configurations using the initial test configuration. 802.11b/g/n operating modes are tested independently according to the service requirements in each frequency band. 802.11b/g/n modes are tested on the maximum average output channel.
5. The Initial test position does not apply to devices that require a fixed exposure test position. SAR is measured in a fixed exposure test position for these devices in 802.11b according to the 2.4 GHz DSSS procedure or in 2.4 GHz and 5 GHz OFDM configurations using the initial test configuration procedures .
6. The “subsequent test configuration” procedures are applied to determine if additional SAR measurements are required for the remaining OFDM transmission modes that have not been tested in the initial test configuration. SAR test exclusion is determined according to reported SAR in the initial test configuration and maximum output power specified or measured for these other OFDM configurations.

#### 2.4 GHz and 5GHz SAR Procedures

Separate SAR procedures are applied to DSSS and OFDM configurations in the 2.4 GHz band to simplify DSSS test requirements. For 802.11b DSSS SAR measurements, DSSS SAR procedure applies to fixed exposure test position and initial test position procedure applies to multiple exposure test positions. When SAR measurement is required for an OFDM configuration, the initial test configuration, subsequent test configuration and initial test position procedures are applied. The SAR test exclusion requirements for 802.11g/n OFDM configurations are described in section 5.2.2.

##### 1. 802.11b DSSS SAR Test Requirements

SAR is measured for 2.4 GHz 802.11b DSSS using either a fixed test position or, when applicable, the initial test position procedure. SAR test reduction is determined according to the following:

- a. When the reported SAR of the highest measured maximum output power channel (section 3.1) for the exposure configuration is  $\leq 0.8$  W/kg, no further SAR testing is required for 802.11b DSSS in that exposure configuration.
- b. When the reported SAR is  $> 0.8$  W/kg, SAR is required for that exposure configuration using the next highest measured output power channel. When any reported SAR is  $> 1.2$  W/kg, SAR is required for the third channel; i.e., all channels require testing.

##### 1. 2.4 GHz 802.11g/n OFDM SAR Test Exclusion Requirements

When SAR measurement is required for 2.4 GHz 802.11g/n OFDM configurations, the measurement and test reduction procedures for OFDM are applied (section 5.3). SAR is not required for the following 2.4 GHz OFDM conditions.

- a. When KDB Publication 447498 SAR test exclusion applies to the OFDM configuration
- b. When the highest reported SAR for DSSS is adjusted by the ratio of OFDM to DSSS specified maximum output power and the adjusted SAR is  $\leq 1.2$  W/kg.

##### 2. SAR Test Requirements for OFDM Configurations

When SAR measurement is required for 802.11 a/g/n/ac OFDM configurations, each standalone and frequency aggregated band is considered separately for SAR test reduction. When the same transmitter and antenna(s) are used for U-NII-1 and U-NII-2A bands, additional SAR test reduction applies. When band gap channels between U-NII-2C band and 5.8 GHz U-NII-3 or §15.247 band are supported, the highest maximum output power





transmission mode configuration and maximum output power channel across the bands must be used to determine SAR test reduction, according to the initial test configuration and subsequent test configuration requirements.<sup>20</sup> In applying the initial test configuration and subsequent test configuration procedures, the 802.11 transmission configuration with the highest specified maximum output power and the channel within a test configuration with the highest measured maximum output power should be clearly distinguished to apply the procedures.

### 3. OFDM Transmission Mode SAR Test Configuration and Channel Selection Requirements

The initial test configuration for 2.4 GHz and 5 GHz OFDM transmission modes is determined by the 802.11 configuration with the highest maximum output power specified for production units, including tune-up tolerance, in each standalone and aggregated frequency band. SAR for the initial test configuration is measured using the highest maximum output power channel determined by the default power measurement procedures (section 4). When multiple configurations in a frequency band have the same specified maximum output power, the initial test configuration is determined according to the following steps applied sequentially.

- a. The largest channel bandwidth configuration is selected among the multiple configurations with the same specified maximum output power.
- b. If multiple configurations have the same specified maximum output power and largest channel bandwidth, the lowest order modulation among the largest channel bandwidth configurations is selected.
- c. If multiple configurations have the same specified maximum output power, largest channel bandwidth and lowest order modulation, the lowest data rate configuration among these configurations is selected.
- d. When multiple transmission modes (802.11a/g/n/ac) have the same specified maximum output power, largest channel bandwidth, lowest order modulation and lowest data rate, the lowest order 802.11 mode is selected; i.e., 802.11a is chosen over 802.11n then 802.11ac or 802.11g is chosen over 802.11n.

After an initial test configuration is determined, if multiple test channels have the same measured maximum output power, the channel chosen for SAR measurement is determined according to the following. These channel selection procedures apply to both the initial test configuration and subsequent test configuration(s), with respect to the default power measurement procedures or additional power measurements required for further SAR test reduction. The same procedures also apply to subsequent highest output power channel(s) selection.

- a. Channels with measured maximum output power within  $\frac{1}{4}$  dB of each other are considered to have the same maximum output.
- b. When there are multiple test channels with the same measured maximum output power, the channel closest to mid-band frequency is selected for SAR measurement.
- c. When there are multiple test channels with the same measured maximum output power and equal separation from mid-band frequency; for example, high and low channels or two mid-band channels, the higher frequency (number) channel is selected for SAR measurement.

### Initial Test Configuration Procedures

An initial test configuration is determined for OFDM transmission modes according to the channel bandwidth, modulation and data rate combination(s) with the highest maximum output power specified for production units in each standalone and aggregated frequency band. SAR is measured using the highest measured maximum output power channel. For configurations with the same specified or measured maximum output power, additional transmission mode and test channel selection procedures are required (see section 5.3.2). SAR test reduction of subsequent highest output test channels is based on the reported SAR of the initial test configuration. For next to the ear, hotspot mode and UMC mini-tablet exposure configurations where multiple test positions are required, the initial test position procedure is applied to minimize the number of test positions required for SAR measurement using the initial test configuration transmission mode.<sup>23</sup> For fixed exposure conditions that do not have multiple SAR test positions, SAR is measured in the transmission mode determined by the initial test configuration. When the reported SAR of the initial test configuration is  $> 0.8$  W/kg, SAR measurement is required for the subsequent next highest measured output power channel(s) in the initial test configuration until the reported SAR is  $\leq 1.2$  W/kg or all required channels are tested.

### 4. Subsequent Test Configuration Procedures

SAR measurement requirements for the remaining 802.11 transmission mode configurations that have not been tested in the initial test configuration are determined separately for each standalone and aggregated frequency band, in each exposure condition, according to the maximum output power specified for production units. The initial test position procedure is applied to next to the ear, UMPC mini-tablet and hotspot mode configurations. When the same maximum output power is specified for multiple transmission modes, the procedures in section 5.3.2 are applied to determine the test configuration. Additional power measurements may be required to determine if SAR measurements are required for subsequent highest output power channels in a subsequent test configuration. The subsequent test configuration and SAR measurement procedures are described in the following.

- a. When SAR test exclusion provisions of KDB Publication 447498 are applicable and SAR measurement is not required for the initial test configuration, SAR is also not required for the next highest maximum output power transmission mode subsequent test configuration(s) in that frequency band or aggregated band and exposure configuration.



- b. When the highest reported SAR for the initial test configuration (when applicable, include subsequent highest output channels), according to the initial test position or fixed exposure position requirements, is adjusted by the ratio of the subsequent test configuration to initial test configuration specified maximum output power and the adjusted SAR is  $\leq 1.2$  W/kg, SAR is not required for that subsequent test configuration.
- c. The number of channels in the initial test configuration and subsequent test configuration can be different due to differences in channel bandwidth. When SAR measurement is required for a subsequent test configuration and the channel bandwidth is smaller than that in the initial test configuration, all channels in the subsequent test configuration that overlap with the larger bandwidth channel tested in the initial test configuration should be used to determine the highest maximum output power channel. This step requires additional power measurement to identify the highest maximum output power channel in the subsequent test configuration to determine SAR test reduction.
  - 1). SAR should first be measured for the channel with highest measured output power in the subsequent test configuration.
  - 2). SAR for subsequent highest measured maximum output power channels in the subsequent test configuration is required only when the reported SAR of the preceding higher maximum output power channel(s) in the subsequent test configuration is  $> 1.2$  W/kg or until all required channels are tested.
    - a) For channels with the same measured maximum output power, SAR should be measured using the channel closest to the center frequency of the larger channel bandwidth channel in the initial test configuration.
  - d. SAR measurements for the remaining highest specified maximum output power OFDM transmission mode configurations that have not been tested in the initial test configuration (highest maximum output) or subsequent test configuration(s) (subsequent next highest maximum output power) is determined by applying the subsequent test configuration procedures in this section to the remaining configurations according to the following:
    - 1) replace "subsequent test configuration" with "next subsequent test configuration" (i.e., subsequent next highest specified maximum output power configuration)
    - 2) replace "initial test configuration" with "all tested higher output power configurations."



### 3.12. Power Reduction

The product without any power reduction.

### 3.13. Power Drift

To control the output power stability during the SAR test, SAR system calculates the power drift by measuring the E-field at the same location at the beginning and at the end of the measurement for each test position. This ensures that the power drift during one measurement is within 5%.



## 4. TEST CONDITIONS AND RESULTS

### 4.1. Conducted Power Results

According KDB 447498 D01 General RF Exposure Guidance v06 Section 4.1 2) states that “Unless it is specified differently in the published RF exposure KDB procedures, these requirements also apply to test reduction and test exclusion considerations. Time-averaged maximum conducted output power applies to SAR and, as required by § 2.1091(c), time-averaged ERP applies to MPE. When an antenna port is not available on the device to support conducted power measurement, such as FRS and certain Part 15 transmitters with built-in integral antennas, the maximum output power allowed for production units should be used to determine RF exposure test exclusion and compliance.”

#### <GSM Conducted Power>

General Note:

1. Per KDB 447498 D01v06, the maximum output power channel is used for SAR testing and for further SAR test reduction.
2. According to October 2013TCB Workshop, for GSM / GPRS / EGPRS, the number of time slots to test for SAR should correspond to the highest frame-average maximum output power configuration, considering the possibility of e.g. 3rd party VoIP operation for head and body-worn SAR testing, the EUT was set in GPRS (4Tx slot) for GSM850/GSM1900 band due to their highest frame-average power.
3. For hotspot mode SAR testing, GPRS should be evaluated, therefore the EUT was set in GPRS (4 Tx slots) for GSM850/GSM1900 band due to its highest frame-average power.

**Conducted power measurement results for GSM850/PCS1900**

GSM 850	Tune-up	Burst Conducted power (dBm)			Division Factors	Tune-up	Average power (dBm)		
		Channel/Frequency(MHz)					Channel/Frequency(MHz)		
	Max	128/824.2	190/836.6	251/848.8		Max	128/824.2	190/836.6	251/848.8
GSM	32.50	32.22	32.26	32.25	-9.03dB	23.97	23.19	23.23	23.22
GSM 1900	Tune-up	Burst Conducted power (dBm)			Division Factors	Tune-up	Average power (dBm)		
		Channel/Frequency(MHz)					Channel/Frequency(MHz)		
	Max	512/1850.2	661/1880	810/1909.8		Max.	512/1850.2	661/1880	810/1909.8
GSM	30.50	30.20	30.27	30.21	-9.03dB	21.97	21.17	21.24	21.18

#### Notes:

1. Division Factors

To average the power, the division factor is as follows:

- 1TX-slot = 1 transmit time slot out of 8 time slots=> conducted power divided by (8/1) => -9.00dB
- 2TX-slots = 2 transmit time slots out of 8 time slots=> conducted power divided by (8/2) => -6.00dB
- 3TX-slots = 3 transmit time slots out of 8 time slots=> conducted power divided by (8/3) => -4.26dB
- 4TX-slots = 4 transmit time slots out of 8 time slots=> conducted power divided by (8/4) => -3.00dB

2. According to the conducted power as above, the GPRS measurements are performed with N/ATxslot for GPRS850 andN/ATxslot GPRS1900.

#### <UMTS Conducted Power>

The following tests were conducted according to the test requirements outlines in 3GPP TS 34.121 specification. A summary of these settings are illustrated below:

#### HSDPA Setup Configuration:

- a. The EUT was connected to Base Station E5515C referred to the Setup Configuration.
- b. The RF path losses were compensated into the measurements.
- c. A call was established between EUT and Base Station with following setting:
  - i. Set Gain Factors ( $\beta_c$  and  $\beta_d$ ) and parameters were set according to each
  - ii. Specific sub-test in the following table, C10.1.4, quoted from the TS 34.121
  - iii. Set RMC 12.2Kbps + HSDPA mode.
  - iv. Set Cell Power = -86 dBm
  - v. Set HS-DSCH Configuration Type to FRC (H-set 1, QPSK)
  - vi. Select HSDPA Uplink Parameters
  - vii. Set Delta ACK, Delta NACK and Delta CQI = 8



- viii. Set Ack-Nack Repetition Factor to 3
- ix. Set CQI Feedback Cycle (k) to 4 ms
- x. Set CQI Repetition Factor to 2
- xi. Power Ctrl Mode = All Up bits
- d. The transmitted maximum output power was recorded.

**Table C.10.1.4:  $\beta$  values for transmitter characteristics tests with HS-DPCCH**

Sub-test	$\beta_c$	$\beta_d$	$\beta_d$ (SF)	$\beta_c/\beta_d$	$\beta_{HS}$ (Note 1, Note 2)	CM (dB) (Note 3)	MPR (dB) (Note 3)
1	2/15	15/15	64	2/15	4/15	0.0	0.0
2	12/15 (Note 4)	15/15 (Note 4)	64	12/15 (Note 4)	24/15	1.0	0.0
3	15/15	8/15	64	15/8	30/15	1.5	0.5
4	15/15	4/15	64	15/4	30/15	1.5	0.5
<p>Note 1: <math>\Delta_{ACK}</math>, <math>\Delta_{NACK}</math> and <math>\Delta_{CQI} = 30/15</math> with <math>\beta_{HS} = 30/15 * \beta_c</math>.</p> <p>Note 2: For the HS-DPCCH power mask requirement test in clause 5.2C, 5.7A, and the Error Vector Magnitude (EVM) with HS-DPCCH test in clause 5.13.1A, and HSDPA EVM with phase discontinuity in clause 5.13.1AA, <math>\Delta_{ACK}</math> and <math>\Delta_{NACK} = 30/15</math> with <math>\beta_{HS} = 30/15 * \beta_c</math>, and <math>\Delta_{CQI} = 24/15</math> with <math>\beta_{HS} = 24/15 * \beta_c</math>.</p> <p>Note 3: CM = 1 for <math>\beta_c/\beta_d = 12/15</math>, <math>\beta_{HS}/\beta_c = 24/15</math>. For all other combinations of DPDCH, DPCCH and HS-DPCCH the MPR is based on the relative CM difference. This is applicable for only UEs that support HSDPA in release 6 and later releases.</p> <p>Note 4: For subtest 2 the <math>\beta_c/\beta_d</math> ratio of 12/15 for the TFC during the measurement period (TF1, TF0) is achieved by setting the signalled gain factors for the reference TFC (TF1, TF1) to <math>\beta_c = 11/15</math> and <math>\beta_d = 15/15</math>.</p>							

**Setup Configuration****HSUPA Setup Configuration:**

- a. The EUT was connected to Base Station R&S CMU200 referred to the Setup Configuration.
- b. The RF path losses were compensated into the measurements.
- c. A call was established between EUT and Base Station with following setting \* :
  - i. Call Configs = 5.2B, 5.9B, 5.10B, and 5.13.2B with QPSK
  - ii. Set the Gain Factors ( $\beta_c$  and  $\beta_d$ ) and parameters (AG Index) were set according to each specific sub-test in the following table, C11.1.3, quoted from the TS 34.121
  - iii. Set Cell Power = -86 dBm
  - iv. Set Channel Type = 12.2k + HSPA
  - v. Set UE Target Power
  - vi. Power Ctrl Mode= Alternating bits
  - vii. Set and observe the E-TFCI
  - viii. Confirm that E-TFCI is equal to the target E-TFCI of 75 for sub-test 1, and other subtest's E-TFCI
- d. The transmitted maximum output power was recorded.

Table C.11.1.3:  $\beta$  values for transmitter characteristics tests with HS-DPCCH and E-DCH

Sub-test	$\beta_c$	$\beta_d$	$\beta_d$ (SF)	$\beta_c/\beta_d$	$\beta_{HS}$ (Note 1)	$\beta_{ec}$	$\beta_{ed}$ (Note 5) (Note 6)	$\beta_{ed}$ (SF)	$\beta_{ed}$ (Codes)	CM (dB) (Note 2)	MPR (dB) (Note 2)	AG Index (Note 6)	E-TFCI
1	11/15 (Note 3)	15/15 (Note 3)	64	11/15 (Note 3)	22/15	209/25	1309/225	4	1	1.0	0.0	20	75
2	6/15	15/15	64	6/15	12/15	12/15	94/75	4	1	3.0	2.0	12	67
3	15/15	9/15	64	15/9	30/15	30/15	$\beta_{ed1}$ : 47/15 $\beta_{ed2}$ : 47/15	4	2	2.0	1.0	15	92
4	2/15	15/15	64	2/15	4/15	2/15	56/75	4	1	3.0	2.0	17	71
5	15/15 (Note 4)	15/15 (Note 4)	64	15/15 (Note 4)	30/15	24/15	134/15	4	1	1.0	0.0	21	81

Note 1:  $\Delta_{ACK}$ ,  $\Delta_{NACK}$  and  $\Delta_{CQI} = 30/15$  with  $\beta_{hs} = 30/15 * \beta_c$ .

Note 2: CM = 1 for  $\beta_c/\beta_d = 12/15$ ,  $\beta_{hs}/\beta_c = 24/15$ . For all other combinations of DPDCH, DPCCH, HS-DPCCH, E-DPDCH and E-DPCCH the MPR is based on the relative CM difference.

Note 3: For subtest 1 the  $\beta_c/\beta_d$  ratio of 11/15 for the TFC during the measurement period (TF1, TF0) is achieved by setting the signalled gain factors for the reference TFC (TF1, TF1) to  $\beta_c = 10/15$  and  $\beta_d = 15/15$ .

Note 4: For subtest 5 the  $\beta_c/\beta_d$  ratio of 15/15 for the TFC during the measurement period (TF1, TF0) is achieved by setting the signalled gain factors for the reference TFC (TF1, TF1) to  $\beta_c = 14/15$  and  $\beta_d = 15/15$ .

Note 5: In case of testing by UE using E-DPDCH Physical Layer category 1, Sub-test 3 is omitted according to TS25.306 Table 5.1g.

Note 6:  $\beta_{ed}$  can not be set directly, it is set by Absolute Grant Value.

**General Note**

1. Per KDB 941225 D01, RMC 12.2kbps setting is used to evaluate SAR. If AMR 12.2kbps power is < 0.25dB higher than RMC 12.2kbps, SAR tests with AMR 12.2kbps can be excluded.
2. By design, AMR and HSDPA/HSUPA RF power will not be larger than RMC 12.2kbps, detailed information is included in Tune-up Procure exhibit.
3. It is expected by the manufacturer that MPR for some HSDPA/HSUPA subtests may differ from the specification of 3GPP, according to the chipset implementation in this model. The implementation and expected deviation are detailed in tune-up procedure exhibit.

**Conducted Power Measurement Results(WCDMA Band II)**

Item	band	WCDMA Band II result (dBm)		
		Channel/Frequency(MHz)		
		9262/ 1852.4	9400/ 1880	9538/ 1907.6
RMC	12.2kbps	22.48	22.29	22.35

**Note:** When the maximum output power and tune-up tolerance specified for production units in a secondary mode is  $\leq 1/2$ dB higher than the primary mode (RMC12.2kbps) or when the highest reported SAR of the primary mode is scaled by the ratio of specified maximum output power and tune-up tolerance of secondary to primary mode and the adjusted SAR is  $\leq 1.2$  W/kg, SAR measurement is not required for the secondary mode.





## LTE Band2

BW (MHz)	Frequency (MHz)	RB Configuration		Average Power [dBm]	
		Size	Offset	QPSK	16QAM
1.4	1850.7	1	0	24.78	24.20
		1	3	24.92	24.32
		1	5	24.97	24.14
		3	0	24.67	23.69
		3	2	24.65	23.68
		3	3	24.62	23.58
		6	0	23.83	22.96
	1880.0	1	0	24.83	24.11
		1	3	24.86	24.25
		1	5	24.87	24.05
		3	0	24.87	24.10
		3	2	24.85	24.01
		3	3	24.91	24.09
		6	0	24.09	22.94
	1909.3	1	0	24.81	24.12
		1	3	24.85	24.24
		1	5	24.90	24.07
		3	0	24.82	23.95
		3	2	24.96	24.04
		3	3	25.14	23.96
		6	0	23.95	22.88
3	1851.5	1	0	24.72	23.86
		1	7	24.23	23.66
		1	14	24.66	23.77
		8	0	23.76	22.92
		8	4	23.76	22.84
		8	7	23.71	22.88
		15	0	23.80	22.67
	1880.0	1	0	24.88	23.90
		1	7	24.71	23.85
		1	14	24.81	24.01
		8	0	23.89	23.00
		8	4	23.82	22.92
		8	7	23.96	22.95
		15	0	23.98	22.84
	1908.5	1	0	24.62	23.90
		1	7	24.55	23.92
		1	14	24.74	23.90
		8	0	23.89	23.14
		8	4	23.94	23.17
		8	7	23.96	23.10
		15	0	23.92	23.00
5	1852.5	1	0	24.76	23.78
		1	12	24.63	23.72
		1	24	24.71	23.92
		12	0	23.86	22.81
		12	6	23.84	22.81
		12	13	23.74	22.78
		25	0	23.77	22.97
	1880.0	1	0	24.84	24.09
		1	12	24.86	24.00
		1	24	24.91	24.03
		12	0	23.91	23.13
		12	6	23.99	22.88
		12	13	23.95	22.91
		25	0	23.89	23.05
	1907.5	1	0	24.86	23.80
		1	12	24.94	23.81



		1	24	24.72	23.66
		12	0	23.89	23.11
		12	6	24.04	22.90
		12	13	23.95	22.98
		25	0	23.92	23.02
10	1855.0	1	0	24.68	23.92
		1	24	24.64	23.92
		1	49	24.60	23.75
		25	0	23.92	22.85
		25	12	23.86	23.02
		25	25	23.80	23.07
		50	0	23.83	22.91
	1880.0	1	0	24.91	24.40
		1	24	24.93	24.41
		1	49	24.69	24.32
		25	0	23.91	23.04
		25	12	23.91	23.15
		25	25	24.01	23.15
		50	0	23.95	23.04
	1905.0	1	0	24.57	23.86
		1	24	24.72	24.48
		1	49	25.13	24.35
		25	0	23.94	23.10
		25	12	23.92	23.03
		25	25	24.00	22.99
		50	0	23.94	22.99
15	1857.5	1	0	24.62	23.70
		1	37	24.36	23.73
		1	74	24.45	23.85
		37	0	23.77	23.47
		37	18	23.44	23.75
		37	38	23.87	23.87
		75	0	23.86	22.87
	1880.0	1	0	24.89	24.42
		1	37	24.81	24.39
		1	74	24.56	24.21
		37	0	24.35	24.18
		37	18	24.67	24.05
		37	38	24.38	24.03
		75	0	23.89	22.99
	1902.5	1	0	24.56	23.79
		1	37	24.75	24.00
		1	74	24.92	23.97
		37	0	23.50	23.55
		37	18	23.75	23.69
		37	38	23.87	23.93
		75	0	23.88	22.98
20	1860.0	1	0	24.52	23.96
		1	49	24.65	24.05
		1	99	24.90	24.00
		50	0	23.88	22.89
		50	25	23.81	22.90
		50	50	23.76	22.91
		100	0	23.85	22.92
	1880.0	1	0	24.71	24.01
		1	49	25.24	24.05
		1	99	24.69	23.76
		50	0	24.03	23.24
		50	25	24.06	23.24
		50	50	23.96	23.06
		100	0	23.94	23.04





	1900.0	1	0	24.68	24.12
		1	49	24.99	24.27
		1	99	25.13	24.11
		50	0	23.84	23.06
		50	25	23.98	23.07
		50	50	24.11	23.09
		100	0	23.95	23.07



## LTE Band4

BW (MHz)	Frequency (MHz)	RB Configuration		Average Power [dBm]	
		Size	Offset	QPSK	16QAM
1.4	1710.7	1	0	23.42	22.61
		1	3	23.45	22.75
		1	5	23.36	22.59
		3	0	23.41	22.92
		3	2	23.33	22.91
		3	3	23.53	22.41
		6	0	22.41	21.34
	1732.5	1	0	23.56	22.87
		1	3	23.59	23.01
		1	5	23.69	22.67
		3	0	23.82	22.51
		3	2	23.60	22.53
		3	3	23.53	22.52
		6	0	22.56	21.61
	1754.3	1	0	24.25	23.43
		1	3	24.19	23.57
		1	5	24.29	23.26
		3	0	24.07	22.78
		3	2	24.09	23.08
		3	3	24.10	23.09
		6	0	23.06	22.22
3	1711.5	1	0	23.43	22.57
		1	7	23.20	21.94
		1	14	23.43	22.41
		8	0	22.44	21.48
		8	4	22.39	21.54
		8	7	22.45	21.56
		15	0	22.36	21.44
	1732.5	1	0	23.64	22.54
		1	7	23.58	22.64
		1	14	23.93	22.76
		8	0	22.63	21.58
		8	4	22.55	21.60
		8	7	22.73	21.84
		15	0	22.53	21.50
	1753.5	1	0	23.72	23.22
		1	7	23.96	22.99
		1	14	24.00	23.25
		8	0	22.97	22.09
		8	4	23.01	22.04
		8	7	23.13	22.36
		15	0	23.17	22.07
5	1712.0	1	0	23.50	22.51
		1	12	23.32	22.34
		1	24	23.55	22.18
		12	0	22.52	21.30
		12	6	22.45	21.30
		12	13	22.32	21.43
		25	0	22.26	21.33
	1732.5	1	0	23.63	22.59
		1	12	23.62	22.78
		1	24	23.68	22.79
		12	0	22.69	21.68
		12	6	22.60	21.61
		12	13	22.67	21.40
		25	0	22.57	21.65
	1752.5	1	0	23.95	22.84
		1	12	23.99	22.89



		1	24	24.14	23.06
		12	0	23.08	21.84
		12	6	22.98	22.16
		12	13	23.21	22.23
		25	0	23.00	22.13
10	1715.0	1	0	23.30	22.40
		1	24	23.37	22.64
		1	49	23.44	22.76
		25	0	22.43	21.54
		25	12	22.44	21.51
		25	25	22.60	21.68
		50	0	22.45	21.44
	1732.5	1	0	23.60	22.78
		1	24	23.67	22.90
		1	49	24.10	23.21
		25	0	22.77	21.76
		25	12	22.63	21.76
		25	25	22.78	21.85
		50	0	22.73	21.79
	1750.0	1	0	24.13	23.15
		1	24	23.92	23.05
		1	49	24.74	23.26
		25	0	23.09	22.04
		25	12	23.13	22.04
		25	25	23.14	21.85
		50	0	23.07	22.22
15	1717.5	1	0	23.44	22.25
		1	37	23.24	22.45
		1	74	23.27	22.75
		37	0	22.62	22.36
		37	18	22.41	22.40
		37	38	21.89	21.98
		75	0	22.32	21.45
	1732.5	1	0	23.49	22.66
		1	37	23.51	22.81
		1	74	23.93	23.20
		37	0	22.90	22.69
		37	18	22.66	23.51
		37	38	23.29	23.04
		75	0	22.76	21.85
	1747.5	1	0	23.80	23.36
		1	37	24.00	23.41
		1	74	24.37	23.36
		37	0	23.04	22.83
		37	18	22.93	22.90
		37	38	23.39	23.38
		75	0	23.10	21.91
20	1720.0	1	0	23.33	23.20
		1	49	23.53	22.90
		1	99	23.36	22.96
		50	0	22.59	21.42
		50	25	22.37	21.44
		50	50	22.47	21.53
		100	0	22.52	21.56
	1732.5	1	0	23.66	22.61
		1	49	23.54	22.59
		1	99	24.27	22.45
		50	0	22.58	21.67
		50	25	22.59	21.68
		50	50	22.86	21.82
		100	0	22.58	21.70



	1745.0	1	0	23.94	23.28
		1	49	24.18	23.23
		1	99	24.60	23.35
		50	0	22.90	22.09
		50	25	22.97	22.05
		50	50	23.28	22.15
		100	0	23.35	21.98



## LTE Band7

BW (MHz)	Frequency (MHz)	RB Configuration		Average Power [dBm]	
		Size	Offset	QPSK	16QAM
5	2502.5	1	0	23.91	22.67
		1	12	23.97	22.84
		1	24	24.23	22.88
		12	0	23.06	21.88
		12	6	23.04	22.10
		12	13	23.19	22.15
		25	0	22.99	22.15
	2535.0	1	0	24.45	23.67
		1	12	24.69	23.69
		1	24	24.66	23.92
		12	0	23.79	22.84
		12	6	23.71	22.88
		12	13	23.79	22.89
		25	0	23.82	22.75
	2567.5	1	0	25.23	24.39
		1	12	24.42	23.87
		1	24	23.72	23.25
		12	0	24.36	23.03
		12	6	24.17	23.14
		12	13	24.29	23.08
		25	0	24.16	23.35
10	2505.0	1	0	23.88	23.26
		1	24	24.22	23.53
		1	49	24.17	23.40
		25	0	23.20	22.19
		25	12	23.21	22.30
		25	25	23.46	22.56
		50	0	23.32	22.31
	2535.0	1	0	24.71	23.77
		1	24	24.75	24.06
		1	49	24.18	23.63
		25	0	23.75	23.10
		25	12	23.97	22.78
		25	25	24.21	23.20
		50	0	24.19	22.87
	2565.0	1	0	25.34	24.47
		1	24	25.17	23.95
		1	49	22.75	22.47
		25	0	24.69	23.43
		25	12	24.14	23.15
		25	25	24.21	22.96
		50	0	24.19	23.61
15	2507.5	1	0	23.94	23.07
		1	37	24.31	23.19
		1	74	24.05	23.41
		37	0	22.75	22.81
		37	18	23.27	22.93
		37	38	22.92	23.25
		75	0	23.24	22.28
	2535.0	1	0	24.85	24.17
		1	37	24.66	24.10
		1	74	24.41	23.83
		37	0	24.07	24.08
		37	18	24.10	24.04
		37	38	23.81	23.91
		75	0	24.07	22.93
	2562.5	1	0	24.85	24.11
		1	37	24.70	24.83



		1	74	22.98	22.54
		37	0	25.26	24.00
		37	18	23.92	24.18
		37	38	22.75	22.65
		75	0	24.58	23.28
20	2510.0	1	0	23.86	23.36
		1	49	24.54	23.79
		1	99	24.06	23.67
		50	0	23.32	22.31
		50	25	23.21	22.36
		50	50	23.26	22.43
		100	0	23.29	22.31
	2535.0	1	0	24.28	23.59
		1	49	25.18	23.68
		1	99	24.98	23.97
		50	0	23.78	22.80
		50	25	23.71	22.97
		50	50	24.15	23.24
		100	0	23.60	22.83
	2560	1	0	24.94	24.17
		1	49	24.99	24.56
		1	99	23.15	22.46
		50	0	24.85	23.18
		50	25	24.07	23.16
		50	50	23.76	23.47
		100	0	24.24	23.19

**LTE Band17**

BW (MHz)	Frequency (MHz)	RB Configuration		Average Power [dBm]	
		Size	Offset	QPSK	16QAM
5	706.5	1	0	23.72	23.14
		1	12	24.20	23.36
		1	24	24.06	23.09
		12	0	22.99	22.09
		12	6	23.02	22.01
		12	13	23.13	21.89
		25	0	23.04	21.93
	710	1	0	23.83	23.38
		1	12	23.63	22.92
		1	24	23.96	23.06
		12	0	23.00	21.88
		12	6	22.86	21.63
		12	13	22.86	21.71
		25	0	22.90	21.87
	713.5	1	0	23.92	22.55
		1	12	23.76	22.79
		1	24	23.71	22.64
		12	0	22.92	21.87
		12	6	23.07	21.88
		12	13	22.90	21.84
		25	0	22.97	21.93
10	709	1	0	23.78	23.13
		1	24	24.01	22.72
		1	49	23.92	23.26
		25	0	23.02	22.04
		25	12	23.09	22.03
		25	25	22.93	21.78
		50	0	22.90	21.77
	710	1	0	24.00	22.99
		1	24	23.64	22.92
		1	49	23.66	23.29
		25	0	22.96	21.87
		25	12	22.94	22.07
		25	25	22.99	21.96
		50	0	22.93	21.82
	711	1	0	24.03	22.90
		1	24	23.77	22.96
		1	49	23.76	22.70
		25	0	22.92	21.88
		25	12	22.91	21.75
		25	25	22.89	21.91
		50	0	22.93	21.83



## &lt;WLAN 2.4GHz Conducted Power&gt;

Mode	Channel	Frequency (MHz)	Data rate (Mbps)	Average Output Power (dBm)
IEEE 802.11b	1	2412	1	12.10
			2	11.23
			5.5	11.16
			11	11.02
	6	2437	1	11.16
			2	10.93
			5.5	10.79
			11	10.77
	11	2462	1	10.77
			2	10.67
			5.5	10.54
			11	10.46
IEEE 802.11g	1	2412	6	11.64
			9	11.63
			12	11.50
			18	10.32
			24	10.05
			36	10.34
			48	10.33
			54	10.26
	6	2437	6	11.11
			9	10.29
			12	10.60
			18	10.93
			24	10.29
			36	10.64
			48	10.69
			54	10.54
	11	2462	6	10.06
			9	9.75
			12	9.62
			18	9.89
			24	9.98
			36	9.85
			48	9.95
			54	10.00
IEEE 802.11n HT20	1	2412	MCS0	13.14
			MCS1	11.30
			MCS2	11.66
			MCS3	11.61
			MCS4	11.51
			MCS5	11.36
			MCS6	11.58
			MCS7	11.31
	6	2437	MCS0	12.33
			MCS1	11.30
			MCS2	11.56
			MCS3	11.08
			MCS4	11.72
			MCS5	11.35
			MCS6	11.80
			MCS7	11.63
	11	2462	MCS0	11.24
			MCS1	11.21
			MCS2	11.09
			MCS3	11.20
			MCS4	11.15





			MCS5	11.06
			MCS6	10.70
			MCS7	10.74

**Note:** SAR is not required for the following 2.4 GHz OFDM conditions as the highest reported SAR for DSSS is adjusted by the ratio of OFDM to DSSS specified maximum output power and the adjusted SAR is  $\leq 1.2$  W/kg.

**<BT EIRP>**

Mode	channel	Frequency (MHz)	EIRP (dBm)
GFSK-BLE	0	2402	-10.35
	19	2440	-9.71
	39	2480	-9.61

Note: EIRP[dBm] = E[dBuV/m] - 95.2

Per KDB 447498 D01v06, the 1-g and 10-g SAR test exclusion thresholds for 100 MHz to 6 GHz at test separation distances  $\leq 50$  mm are determined by:

$[(\text{max. power of channel, including tune-up tolerance, mW}) / (\text{min. test separation distance, mm})] \cdot [\sqrt{f(\text{GHz})}] \leq 3.0$   
for 1-g SAR and  $\leq 7.5$  for 10-g extremity SAR

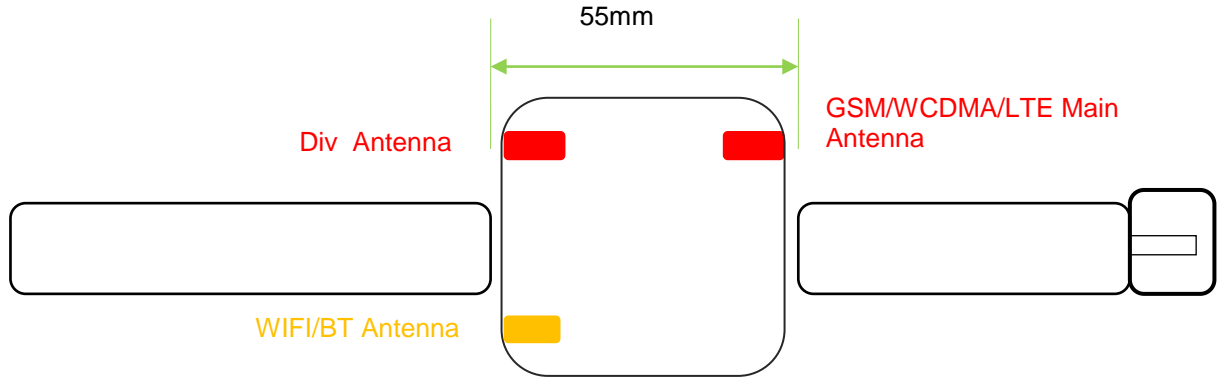
- f(GHz) is the RF channel transmit frequency in GHz
- Power and distance are rounded to the nearest mW and mm before calculation
- The result is rounded to one decimal place for comparison

Bluetooth Turn up Power (dBm)	Separation Distance (mm)	Frequency (GHz)	Exclusion Thresholds
-9.0	5	2.48	0.0397

Per KDB 447498 D01v06, when the minimum test separation distance is  $< 5$  mm, a distance of 5 mm is applied to determine SAR test exclusion. The test exclusion threshold is  $0.0397 < 3.0$ , SAR testing is not required.



## 4.2. Transmit Antenna



Rear view



### 4.3. SAR Measurement Results

The calculated SAR is obtained by the following formula:

$$\text{Reported SAR} = \text{Measured SAR} * 10^{(P_{\text{target}} - P_{\text{measured}})/10}$$

$$\text{Scaling factor} = 10^{(P_{\text{target}} - P_{\text{measured}})/10}$$

$$\text{Reported SAR} = \text{Measured SAR} * \text{Scaling factor}$$

Where

$P_{\text{target}}$  is the power of manufacturing upper limit;

$P_{\text{measured}}$  is the measured power;

Measured SAR is measured SAR at measured power which including power drift)

Reported SAR which including Power Drift and Scaling factor

#### Duty Cycle

Test Mode	Duty Cycle
GPRS850	1:1
GPRS1900	1:1
UMTS	1:1
LTE	1:1
WLAN2450	1:1

### 4.4.1 SAR Results

#### Next – to – Mouth <Flat / Front (10mm)>

Ch.	Freq. (MHz)	Band/Mode	Time slots /Channel/ Service	Test Position	Conducted Power (dBm)	Maximum Allowed Power (dBm)	Power Drift (%)	Scaling Factor	SAR <sub>1-g</sub> results(W/kg)		Graph Results
									Measured	Reported	
190	836.6	GSM850	Voice	Front	32.26	32.50	-2.56	1.057	<b>0.075</b>	<b>0.079</b>	<b>Plot 1</b>
661	1880	GSM1900	Voice	Front	30.27	30.50	-0.55	1.054	<b>0.023</b>	<b>0.024</b>	<b>Plot 2</b>
9262	1852.4	WCDMA II	RMC	Front	22.48	22.50	-3.26	1.005	<b>0.043</b>	<b>0.043</b>	<b>Plot 3</b>
18900	1880.0	LTE2/QPSK	1RB/20Mhz	Front	25.24	25.50	0.21	1.062	<b>0.052</b>	<b>0.055</b>	<b>Plot 4</b>
19100	1900	LTE2/QPSK	50%RB/20Mhz	Front	24.11	24.50	1.02	1.094	0.034	0.037	
20300	1745.0	LTE4/QPSK	1RB/20Mhz	Front	24.60	25.00	1.62	1.096	<b>0.030</b>	<b>0.033</b>	<b>Plot 5</b>
20300	1745.0	LTE4/QPSK	50%RB/20Mhz	Front	23.28	23.50	0.32	1.052	0.020	0.021	
21100	2535.0	LTE7/QPSK	1RB/20Mhz	Front	25.18	25.50	0.07	1.076	<b>0.117</b>	<b>0.126</b>	<b>Plot 6</b>
21350	2560.0	LTE7/QPSK	50%RB/20Mhz	Front	24.85	25.00	1.58	1.035	0.084	0.087	
23800	711	LTE17/QPSK	1RB/10Mhz	Front	24.03	24.50	0.10	1.114	<b>0.291</b>	<b>0.324</b>	<b>Plot 7</b>
23780	709	LTE17/QPSK	50%RB/10Mhz	Front	23.09	23.50	0.01	1.099	0.213	0.234	
1	2412	WLAN2.4G	802.11n20	Front	13.14	13.50	-1.33	1.086	<b>0.014</b>	<b>0.015</b>	<b>Plot 8</b>
1	2412	WLAN2.4G	802.11b	Front	12.10	12.50	0.02	1.096	0.008	0.009	

**Extremity <Flat / Rear (0mm)>**

Ch.	Freq. (MHz)	Band/Mode	Time slots /Channel/ Service	Test Position	Conducted Power (dBm)	Maximum Allowed Power (dBm)	Power Drift (%)	Scaling Factor	SAR <sub>10-g</sub> results(W/kg)		Graph Results
									Measured	Reported	
190	836.6	GSM850	Vioce	Back	32.26	32.50	-3.26	1.057	<b>0.478</b>	<b>0.505</b>	<b>Plot 9</b>
661	1880	GSM1900	Vioce	Back	30.27	30.50	1.13	1.054	<b>0.710</b>	<b>0.749</b>	<b>Plot 10</b>
9262	1852.4	WCDMA II	RMC	Back	22.48	22.50	-0.59	1.005	<b>1.517</b>	<b>1.524</b>	<b>Plot 11</b>
18900	1880.0	LTE2/QPSK	1RB/20Mhz	Back	25.24	25.50	0.80	1.062	<b>1.874</b>	<b>1.990</b>	<b>Plot 12</b>
19100	1900	LTE2/QPSK	50%RB/20Mhz	Back	24.11	24.50	2.36	1.094	1.236	1.352	
20300	1745.0	LTE4/QPSK	1RB/20Mhz	Back	24.60	25.00	-2.05	1.096	<b>1.734</b>	<b>1.901</b>	<b>Plot 13</b>
20300	1745.0	LTE4/QPSK	50%RB/20Mhz	Back	23.28	23.50	4.52	1.052	1.025	1.078	
21100	2535.0	LTE7/QPSK	1RB/20Mhz	Back	25.18	25.50	-0.93	1.076	<b>1.780</b>	<b>1.916</b>	<b>Plot 14</b>
21350	2560.0	LTE7/QPSK	50%RB/20Mhz	Back	24.85	25.00	2.87	1.035	1.140	1.180	
23800	711	LTE17/QPSK	1RB/10Mhz	Back	24.03	24.50	1.12	1.114	<b>1.251</b>	<b>1.394</b>	<b>Plot 15</b>
23780	709	LTE17/QPSK	50%RB/10Mhz	Back	23.09	23.50	1.01	1.099	0.841	0.924	
1	2412	WLAN2.4G	802.11n20	Back	13.14	13.50	-3.69	1.086	<b>0.721</b>	<b>0.783</b>	<b>Plot 16</b>
1	2412	WLAN2.4G	802.11b	Back	12.10	12.50	0.02	1.096	0.511	0.560	

Note:

1. The value with black color is the maximum Reported SAR Value of each test band.
2. Per FCC KDB Publication 447498 D01, if the reported (scaled) SAR measured at the middle channel or highest output power channel for each test configuration is  $\leq 0.8$  W/kg then testing at the other channels is optional for such test configuration(s).



#### 4.4. Standalone SAR Test Exclusion Considerations and Estimated SAR

Per KDB447498 requires when the standalone SAR test exclusion of section 4.3.1 is applied to an antenna that transmits simultaneously with other antennas, the standalone SAR must be estimated according to the following to determine simultaneous transmission SAR test exclusion;

- $(\text{max. power of channel, including tune-up tolerance, mW}) / (\text{min. test separation distance, mm}) \cdot [\sqrt{f(\text{GHz})} / x]$  W/kg for test separation distances  $\leq 50$  mm;

where  $x = 7.5$  for 1-g SAR, and  $x = 18.75$  for 10-g SAR.

- 0.4 W/kg for 1-g SAR and 1.0 W/kg for 10-g SAR, when the test separation distances is  $> 50$  mm

Per FCC KD B447498 D01, simultaneous transmission SAR test exclusion may be applied when the sum of the 1-g SAR for all the transmitting antenna in a specific a physical test configuration is  $\leq 1.6$  W/Kg. When the sum is greater than the SAR limit, SAR test exclusion is determined by the SAR to peak location separation ratio.

$$\text{Ratio} = \frac{(\text{SAR}_1 + \text{SAR}_2)^{1.5}}{(\text{peak location separation, mm})} < 0.04$$

Estimated stand alone SAR					
Communication system	Frequency (MHz)	Configuration	Maximum Power (dBm)	Separation Distance (mm)	Estimated SAR (W/kg)
Bluetooth*	2480	Front	-9	10	0.003 (1g)
Bluetooth*	2480	Rear	-9	5	0.002 (10g)

Remark:

1. Bluetooth\*- Including Lower power Bluetooth
2. Maximum average power including tune-up tolerance;
3. When the minimum test separation distance is  $< 5$  mm, a distance of 5 mm is applied to determine SAR test exclusion
4. The front is 10mm, the back is 0mm

#### 4.5. Simultaneous TX SAR Considerations

##### 4.5.1 Introduction

The following procedures adopted from "FCC SAR Considerations for Cell Phones with Multiple Transmitters" are applicable to handsets with built-in unlicensed transmitters such as Bluetooth devices which may simultaneously transmit with the licensed transmitter.

For the DUT, WCDMA and WLAN share difference modular and diffence antenna, need consider simultaneous transmitter.

Application Simultaneous Transmission information:

Air-Interface	Band (MHz)	Type	Simultaneous Transmissions	Voice over Digital Transport(Data)
GSM	GPRS	Voice	Yes, WLAN or BT/BLE	N/A
WCDMA	Band II	Voice	Yes, WLAN or BT/BLE	N/A
LTE	Band2/Band4/ Band7/Band17	DT	Yes, WLAN or BT/BLE	N/A
WLAN	2450	DT	Yes, GPRS, UMTS, LTE	Yes
BT/BLE	2480	DT	Yes, GPRS, UMTS, LTE	Yes

Note:

BT and WLAN can be active at the same time, but only with interleaving of packages switched on board level. That means that they don't transmit at the same time.

BLE-Bluetooth low energy;

BT- Classical Bluetooth;



#### 4.5.2 Evaluation of Simultaneous SAR

##### Next – to – Mouth Exposure Conditions

##### Simultaneous transmission SAR for WiFi and GSM

Test Position	GSM850 Reported SAR1-g (W/Kg)	GSM1900 Reported SAR1-g (W/Kg)	WiFi2.4G Reported SAR1-g (W/kg)	MAX. $\Sigma$ SAR1-g (W/Kg)	SAR1-g Limit (W/Kg)	Peak location separation ratio	Simut Meas. Required
Front	0.079	0.024	0.015	0.094	1.6	no	no

##### Simultaneous transmission SAR for WiFi and UMTS

Test Position	UMTS Band II Reported SAR1-g W/Kg)	WiFi2.4G Reported SAR1-g (W/kg)	MAX. $\Sigma$ SAR1-g (W/Kg)	SAR1-g Limit (W/Kg)	Peak location separation ratio	Simut Meas. Required
Front	0.043	0.015	0.058	1.6	no	no

##### Simultaneous transmission SAR for WiFi and LTE

Reported SAR1-g(W/kg)	Front
LTE Band2	0.055
LTE Band4	0.033
LTE Band7	0.126
LTE Band17	0.324
WiFi2.4G	0.015
MAX. $\Sigma$ SAR1-g (W/kg)	0.339
SAR1-g Limit (W/kg)	1.6
Peak location separation ratio	no
Simut Meas. Required	no

##### Simultaneous transmission SAR for BT and GSM

Test Position	GSM850 Reported SAR1-g (W/Kg)	GSM1900 Reported SAR1-g (W/Kg)	BT Reported SAR1-g (W/kg)	MAX. $\Sigma$ SAR1-g (W/Kg)	SAR1-g Limit (W/Kg)	Peak location separation ratio	Simut Meas. Required
Front	0.079	0.024	0.003	0.082	1.6	no	no

##### Simultaneous transmission SAR for BT and UMTS

Test Position	UMTS Band II Reported SAR1-g W/Kg)	BT Reported SAR1-g (W/kg)	MAX. $\Sigma$ SAR1-g (W/Kg)	SAR1-g Limit (W/Kg)	Peak location separation ratio	Simut Meas. Required
Front	0.043	0.003	0.046	1.6	no	no

##### Simultaneous transmission SAR for BT and LTE

Reported SAR1-g(W/kg)	Front
LTE Band2	0.055
LTE Band4	0.033
LTE Band7	0.126
LTE Band17	0.324
BT	0.003
MAX. $\Sigma$ SAR1-g (W/kg)	0.327
SAR1-g Limit (W/kg)	1.6
Peak location separation ratio	no
Simut Meas. Required	no

**Extremity Exposure Conditions****Simultaneous transmission SAR for WiFi and GSM**

Test Position	GSM850 Reported SAR10-g (W/Kg)	GSM1900 Reported SAR10-g (W/Kg)	WiFi2.4G Reported SAR10-g (W/kg)	MAX. $\Sigma$ SAR10-g (W/Kg)	SAR10-g Limit (W/Kg)	Peak location separation ratio	Simut Meas. Required
Rear	0.505	0.749	0.783	1.532	4.0	no	no

**Simultaneous transmission SAR for WiFi and UMTS**

Test Position	UMTS Band II Reported SAR10-g W/Kg)	WiFi2.4G Reported SAR10-g (W/kg)	MAX. $\Sigma$ SAR10-g (W/Kg)	SAR10-g Limit (W/Kg)	Peak location separation ratio	Simut Meas. Required
Rear	1.524	0.783	2.307	4.0	no	no

**Simultaneous transmission SAR for WiFi and LTE**

Reported SAR10-g(W/kg)	Rear
LTE Band2	1.990
LTE Band4	1.901
LTE Band7	1.916
LTE Band17	1.394
WiFi2.4G	0.783
MAX. $\Sigma$ SAR1-g (W/kg)	2.773
SAR1-g Limit (W/kg)	4.0
Peak location separation ratio	no
Simut Meas. Required	no

**Simultaneous transmission SAR for BT and GSM**

Test Position	GSM850 Reported SAR10-g (W/Kg)	GSM1900 Reported SAR10-g (W/Kg)	BT Reported SAR10-g (W/kg)	MAX. $\Sigma$ SAR10-g (W/Kg)	SAR10-g Limit (W/Kg)	Peak location separation ratio	Simut Meas. Required
Rear	0.505	0.749	0.002	0.751	4.0	no	no

**Simultaneous transmission SAR for BT and UMTS**

Test Position	UMTS Band II Reported SAR10-g W/Kg)	BT Reported SAR10-g (W/kg)	MAX. $\Sigma$ SAR10-g (W/Kg)	SAR10-g Limit (W/Kg)	Peak location separation ratio	Simut Meas. Required
Rear	1.524	0.002	1.526	4.0	no	no

**Simultaneous transmission SAR for BT and LTE**

Reported SAR10-g(W/kg)	Rear
LTE Band2	1.990
LTE Band4	1.901
LTE Band7	1.916
LTE Band17	1.394
BT	0.002
MAX. $\Sigma$ SAR1-g (W/kg)	1.992
SAR1-g Limit (W/kg)	4.0
Peak location separation ratio	no
Simut Meas. Required	no

Note:

2. The value with block color is the maximum values of standalone

3. The value with blue color is the maximum values of  $\Sigma$ SAR<sub>1-g</sub>



#### 4.6. SAR Measurement Variability

According to KDB865664, Repeated measurements are required only when the measured SAR is  $\geq 0.80$  W/kg. If the measured SAR value of the initial repeated measurement is  $< 1.42$  W/kg with  $\leq 20\%$  variation, only one repeated measurement is required to reaffirm that the results are not expected to have substantial variations, which may introduce significant compliance concerns. A second repeated measurement is required only if the measured result for the initial repeated measurement is within 10% of the SAR limit and vary by more than 20%, which are often related to device and measurement setup difficulties. The following procedures are applied to determine if repeated measurements are required. The same procedures should be adapted for measurements according to extremity and occupational exposure limits by applying a factor of 2.5 for extremity exposure and a factor of 5 for occupational exposure to the corresponding SAR thresholds.<sup>19</sup> The repeated measurement results must be clearly identified in the SAR report. All measured SAR, including the repeated results, must be considered to determine compliance and for reporting according to KDB 690783. Repeated measurement is not required when the original highest measured SAR is  $< 0.80$  W/kg; steps 2) through 4) do not apply.

- 3) When the original highest measured SAR is  $\geq 0.80$  W/kg, repeat that measurement once.
- 4) Perform a second repeated measurement only if the ratio of largest to smallest SAR for the original and first repeated measurements is  $> 1.20$  or when the original or repeated measurement is  $\geq 1.42$  W/kg ( $\sim 10\%$  from the 1-g SAR limit).
- 5) Perform a third repeated measurement only if the original, first or second repeated measurement is  $\geq 1.5$  W/kg and the ratio of largest to smallest SAR for the original, first and second repeated measurements is  $> 1.20$ .
- 6) Perform a third repeated measurement only if the original, first or second repeated measurement is  $\geq 1.5$  W/kg and the ratio of largest to smallest SAR for the original, first and second repeated measurements is  $> 1.2$ .

#### Next – to – Mouth Exposure Conditions

Frequency Band (MHz)	Air Interface	RF Exposure Configuration	Test Position	Repeated SAR (yes/no)	Highest Measured SAR <sub>1-g</sub> (W/Kg)	First Repeated	
						Measured SAR <sub>1-g</sub> (W/Kg)	Largest to Smallest SAR Ratio
750	LTE Band 17	Standalone	Front	no	0.291	n/a	n/a
835	GSM 850	Standalone	Front	no	0.075	n/a	n/a
1800	LTE Band 4	Standalone	Front	no	0.030	n/a	n/a
1900	GSM 1900	Standalone	Front	no	0.023	n/a	n/a
	WCDMA Band II	Standalone	Front	no	0.043	n/a	n/a
	LTE Band 2	Standalone	Front	no	0.052	n/a	n/a
2450	2.4GWLAN	Standalone	Front	no	0.014	n/a	n/a
2600	LTE Band 7	Standalone	Front	no	0.117	n/a	n/a



**Extremity Exposure Conditions**

Frequency Band (MHz)	Air Interface	RF Exposure Configuration	Test Position	Repeated SAR (yes/no)	Highest Measured SAR <sub>1-g</sub> (W/Kg)	First Repeated	
						Measured SAR <sub>1-g</sub> (W/Kg)	Largest to Smallest SAR Ratio
750	LTE Band 17	Standalone	Rear	no	1.251	n/a	n/a
835	GSM 850	Standalone	Rear	no	0.478	n/a	n/a
1800	LTE Band 4	Standalone	Rear	no	1.734	n/a	n/a
1900	GSM 1900	Standalone	Rear	no	0.710	n/a	n/a
	WCDMA Band II	Standalone	Rear	no	1.517	n/a	n/a
	LTE Band 2	Standalone	Rear	no	1.874	n/a	n/a
2450	2.4GWLAN	Standalone	Rear	no	0.721	n/a	n/a
2600	LTE Band 7	Standalone	Rear	no	1.780	n/a	n/a

**Remark:**

1. Second Repeated Measurement is not required since the ratio of the largest to smallest SAR for the original and first repeated measurement is not > 1.20 or 3 (1-g or 10-g respectively)

**4.7. General description of test procedures**

1. The DUT is tested using CMW 500 communications testers as controller unit to set test channels and maximum output power to the DUT, as well as for measuring the conducted peak power.
2. Test positions as described in the tables above are in accordance with the specified test standard.
3. Tests in body position were performed in that configuration, which generates the highest time based averaged output power (see conducted power results).
4. According to KDB 447498 D01 testing of other required channels within the operating mode of a frequency band is not required when the reported 1-g or 10-g SAR for the mid-band or highest output power channel is:
  - $\leq 0.8$  W/kg or 2.0 W/kg, for 1-g or 10-g respectively, when the transmission band is  $\leq 100$  MHz
  - $\leq 0.6$  W/kg or 1.5 W/kg, for 1-g or 10-g respectively, when the transmission band is between 100 MHz and 200 MHz
  - $\leq 0.4$  W/kg or 1.0 W/kg, for 1-g or 10-g respectively, when the transmission band is  $\geq 200$  MHz
5. Per KDB648474 D04 require when the reported SAR for a body-worn accessory, measured without a headset connected to the handset, is  $< 1.2$  W/kg.

**4.8. Measurement Uncertainty (300MHz-6GHz)**

Not required as SAR measurement uncertainty analysis is required in SAR reports only when the highest measured SAR in a frequency band is  $\geq 1.5$  W/kg for 1-g SAR according to KDB865664D01.



## 4.9. System Check Results

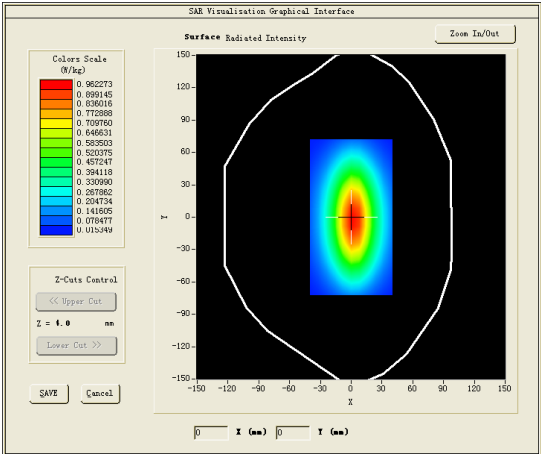
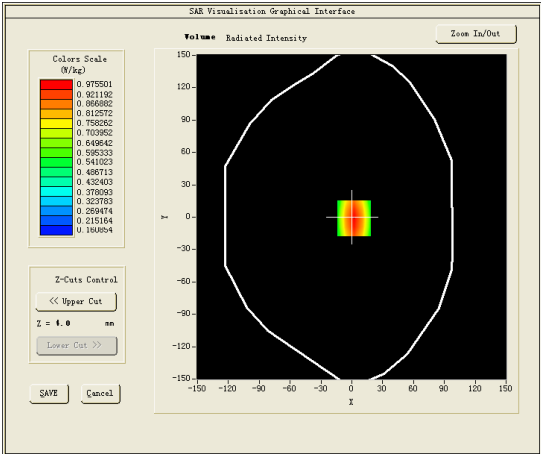
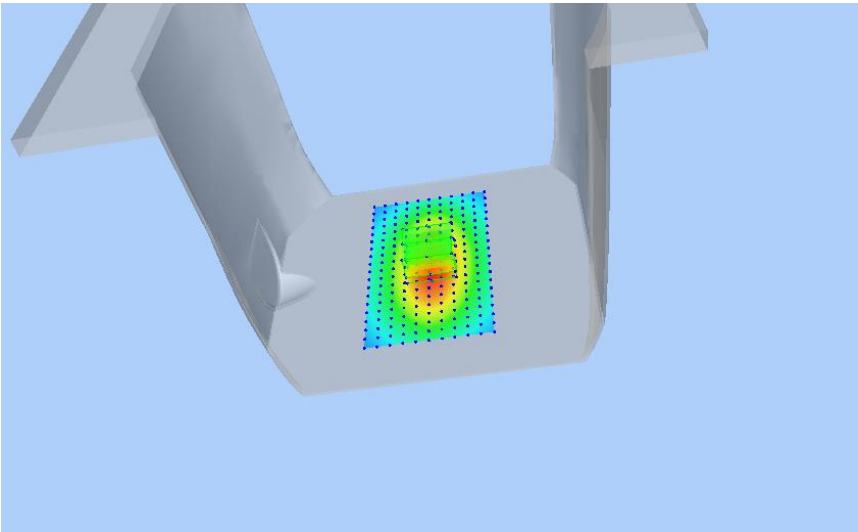
Test mode:750MHz(Head)

Product Description:Validation

Model:Dipole SID750

E-Field Probe: SSE2(SN 31/17 EPGO324)

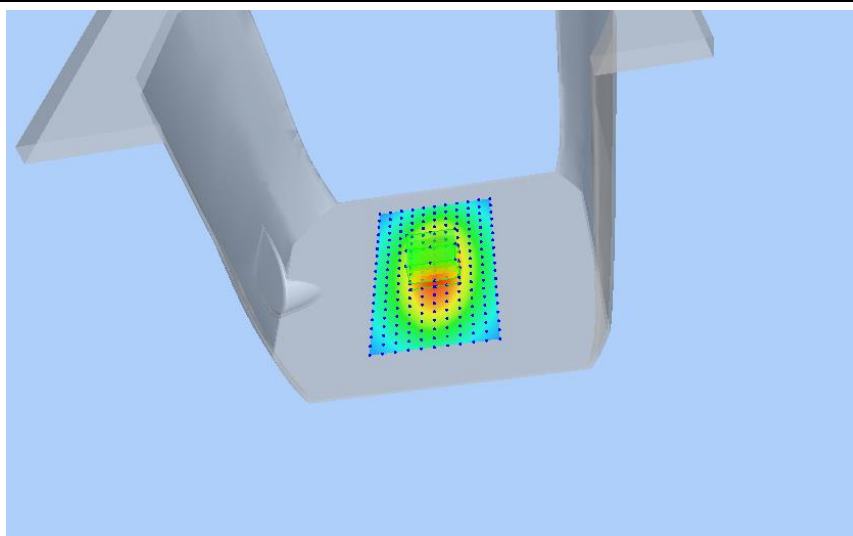
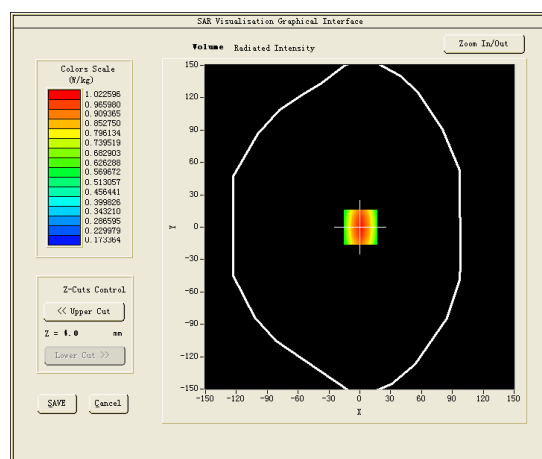
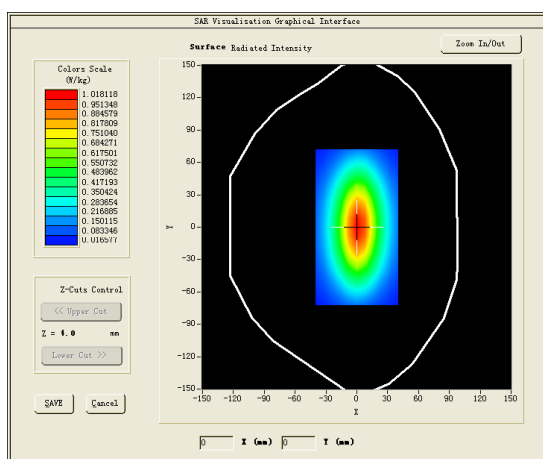
Test Date: August 10, 2021

Medium(liquid type)	HSL_750
Frequency (MHz)	750.0000
Relative permittivity (real part)	42.06
Conductivity (S/m)	0.88
Input power	100mW
Crest Factor	1.0
Conversion Factor	1.50
Variation (%)	-1.440000
SAR 10g (W/Kg)	0.578450
SAR 1g (W/Kg)	0.877203
<b>SURFACE SAR</b>	<b>VOLUME SAR</b>
	
	



Test mode:835MHz(Head)  
Product Description:Validation  
Model:Dipole SID835  
E-Field Probe:SSE2(SN 31/17 EPGO324)  
Test Date: August 14, 2021

Medium(liquid type)	HSL_850
Frequency (MHz)	835.0000
Relative permittivity (real part)	42.82
Conductivity (S/m)	0.92
Input power	100mW
Crest Factor	1.0
Conversion Factor	1.55
Variation (%)	2.100000
SAR 10g (W/Kg)	0.639201
SAR 1g (W/Kg)	0.923150
<b>SURFACE SAR</b>	<b>VOLUME SAR</b>

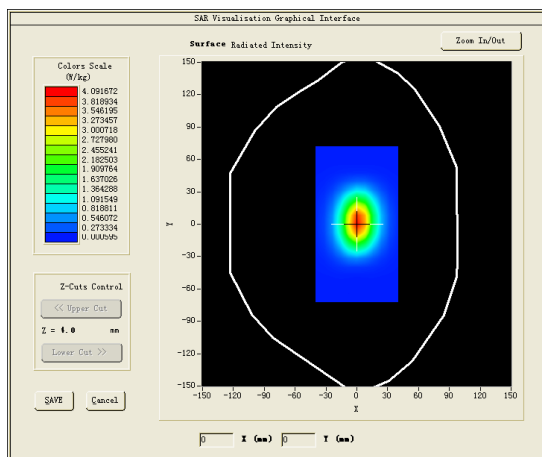




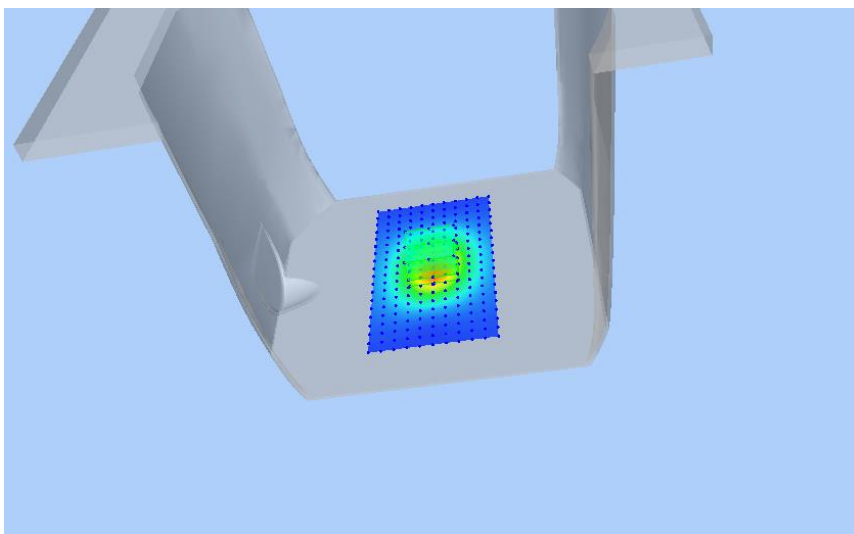
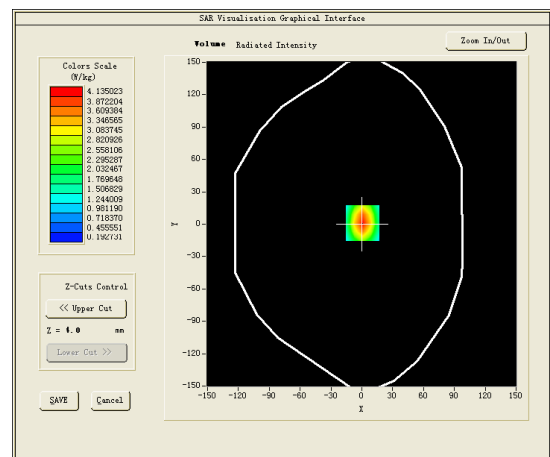
Test mode:1800MHz(Head)  
Product Description:Validation  
Model :Dipole SID1800  
E-Field Probe:SSE2(SN 31/17 EPGO324)  
Test Date: August 18, 2021

Medium(liquid type)	HSL_1800
Frequency (MHz)	1800.0000
Relative permittivity (real part)	40.64
Conductivity (S/m)	1.43
Input power	100mW
Crest Factor	1.0
Conversion Factor	1.68
Variation (%)	2.010000
SAR 10g (W/Kg)	2.055122
SAR 1g (W/Kg)	3.853121

### SURFACE SAR



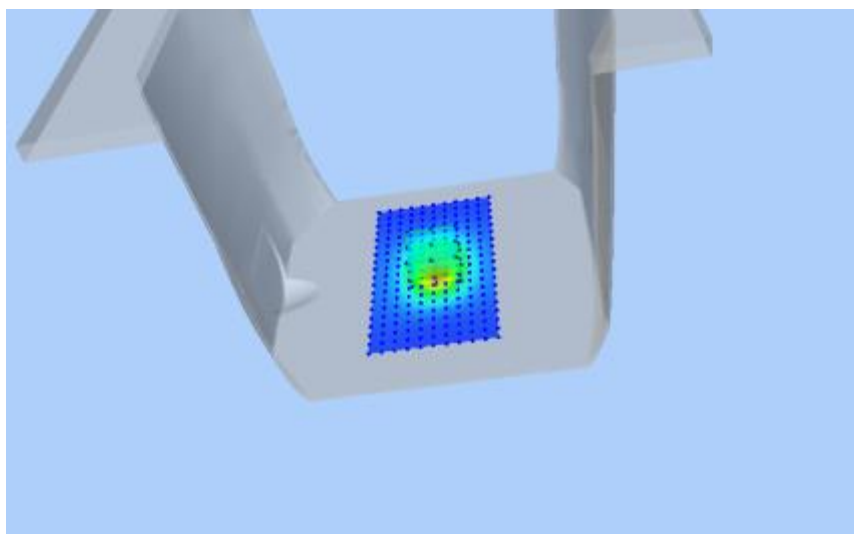
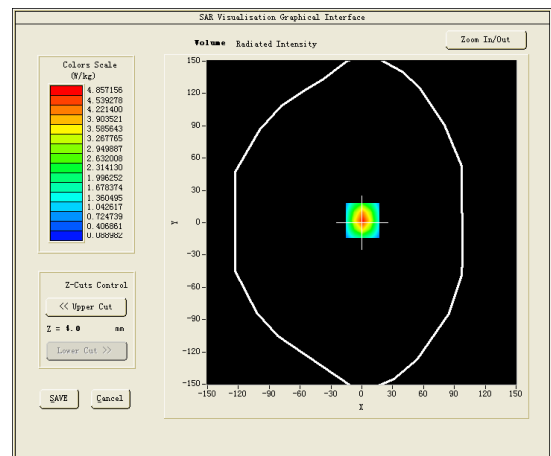
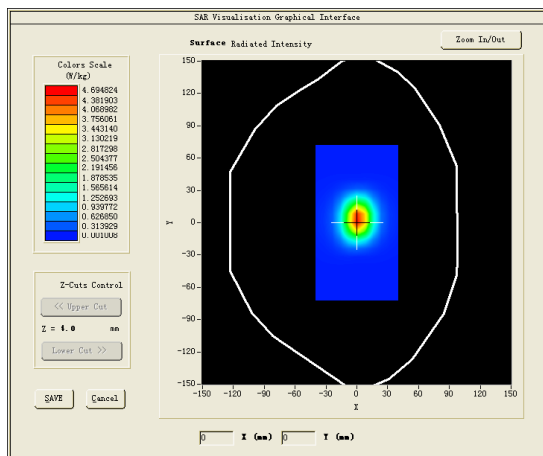
### VOLUME SAR





Test mode:1900MHz(Head)  
Product Description:Validation  
Model :Dipole SID1900  
E-Field Probe: SSE2(SN 31/17 EPGO324)  
Test Date: August 20, 2021

Medium(liquid type)	HSL_1900
Frequency (MHz)	1900.0000
Relative permittivity (real part)	38.56
Conductivity (S/m)	1.37
Input power	100mW
Crest Factor	1.0
Conversion Factor	1.86
Variation (%)	-1.200000
SAR 10g (W/Kg)	2.096254
SAR 1g (W/Kg)	3.911025
<b>SURFACE SAR</b>	<b>VOLUME SAR</b>

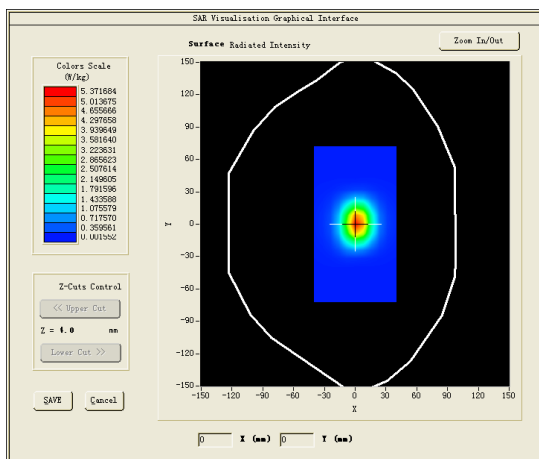




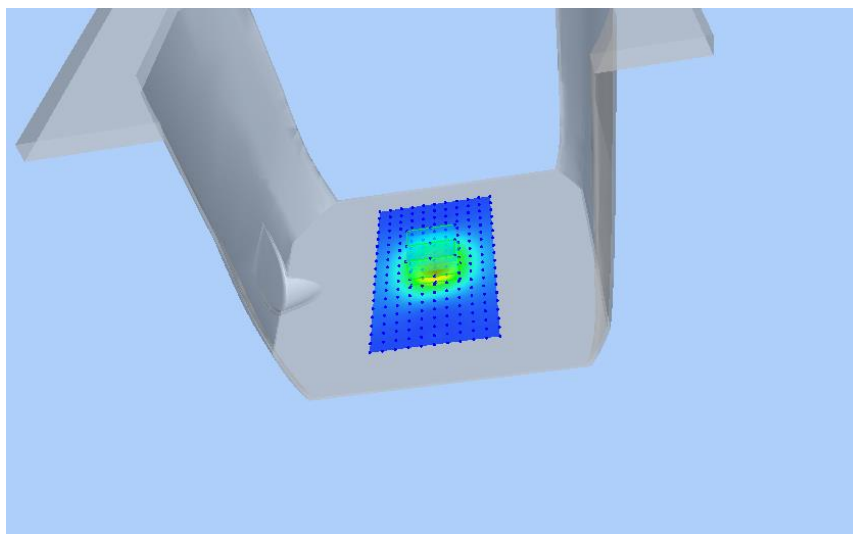
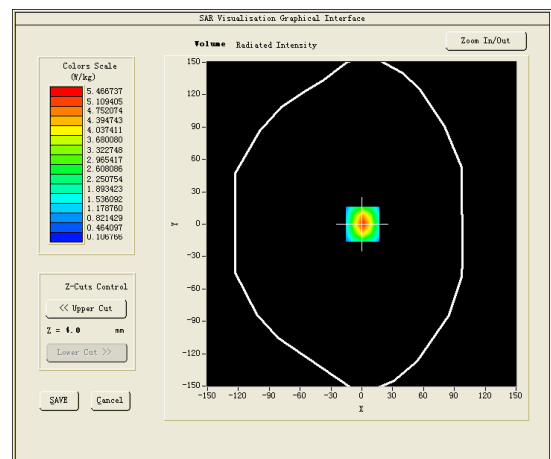
Test mode:2450MHz(Head)  
Product Description:Validation  
Model:Dipole SID2450  
E-Field Probe:SSE2(SN 31/17 EPGO324)  
Test Date: August 25, 2021

Medium(liquid type)	HSL_2450
Frequency (MHz)	2450.0000
Relative permittivity (real part)	39.70
Conductivity (S/m)	1.84
Input power	100mW
Crest Factor	1.0
Conversion Factor	1.91
Variation (%)	-0.080000
SAR 10g (W/Kg)	2.521047
SAR 1g (W/Kg)	5.487102

### SURFACE SAR



### VOLUME SAR

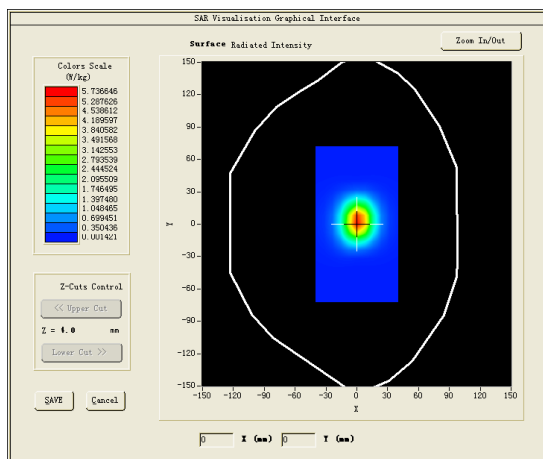




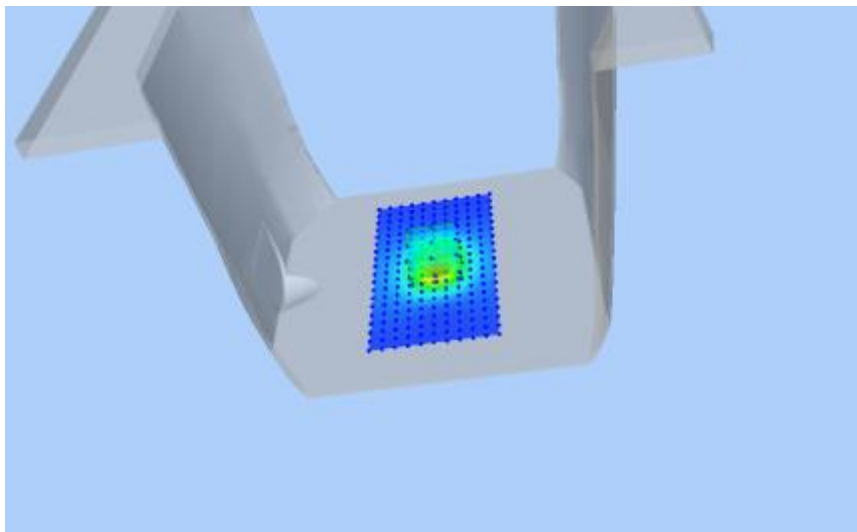
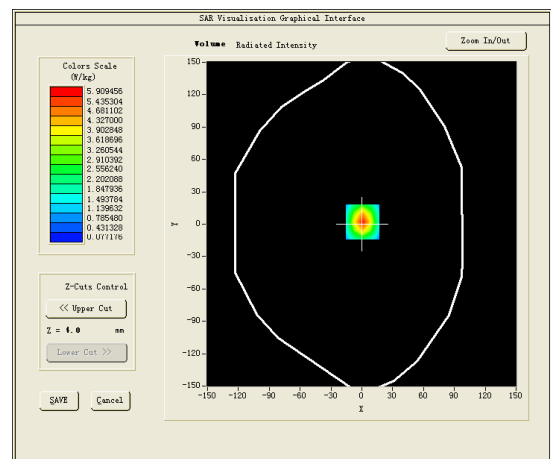
Test mode:2600MHz(Head)  
Product Description:Validation  
Model:Dipole SID2600  
E-Field Probe:SSE2(SN 31/17 EPGO324)  
Test Date: August 28, 2021

Medium(liquid type)	HSL_2600
Frequency (MHz)	2600.0000
Relative permittivity (real part)	38.43
Conductivity (S/m)	1.92
Input power	100mW
Crest Factor	1.0
Conversion Factor	1.89
Variation (%)	3.240000
SAR 10g (W/Kg)	2.246012
SAR 1g (W/Kg)	5.747120

### SURFACE SAR



### VOLUME SAR





#### 4.10. SAR Test Graph Results

SAR plots for the highest measured SAR in each exposure configuration, wireless mode and frequency band combination according to FCC KDB 865664 D02

#1

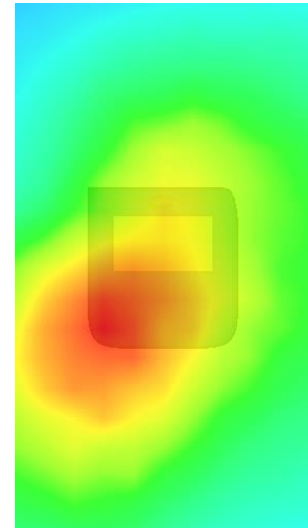
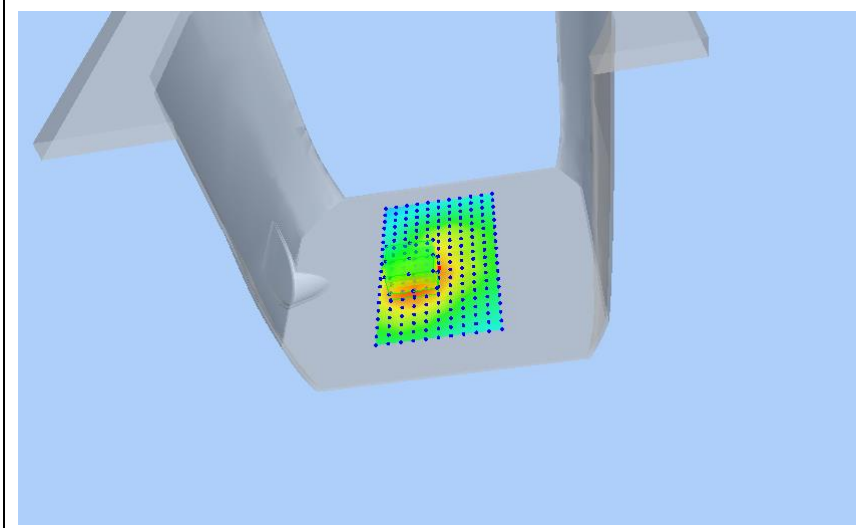
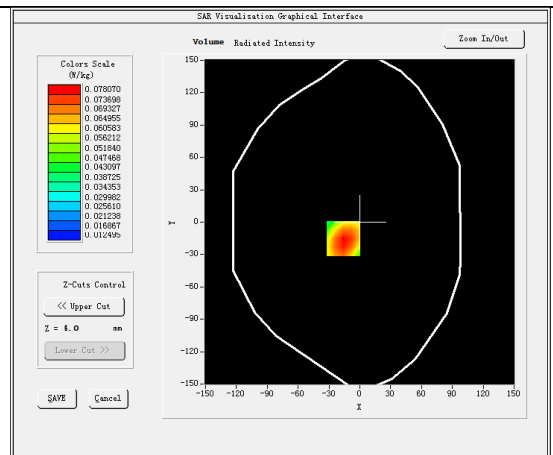
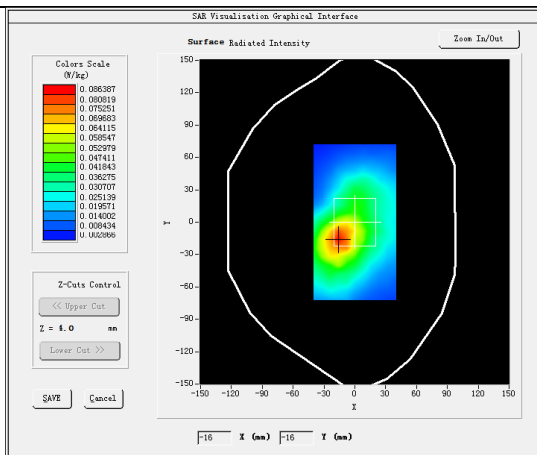
Test Mode: Hotspot WCDMA 850MHz,Middle channel < Next – to – Mouth (Front 10mm)>

Product Description: Infinity IoT

Model: Infinity Watch

Test Date: August 14, 2021

Medium(liquid type)	MSL_850
Frequency (MHz)	836.6000
Relative permittivity (real part)	42.82
Conductivity (S/m)	0.92
E-Field Probe	SN 31/17 EPG0324
Crest Factor	2.0
Conversion Factor	1.59
Sensor	4mm
Area Scan	dx=8mm dy=8mm
Zoom Scan	5x5x7,dx=8mm dy=8mm dz=5mm
Variation (%)	-2.560000
SAR 10g (W/Kg)	0.050472
SAR 1g (W/Kg)	0.075001
SURFACE SAR	VOLUME SAR







#2

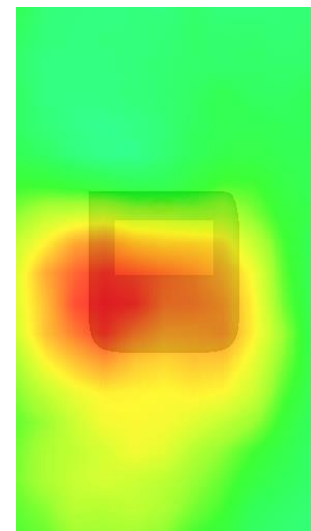
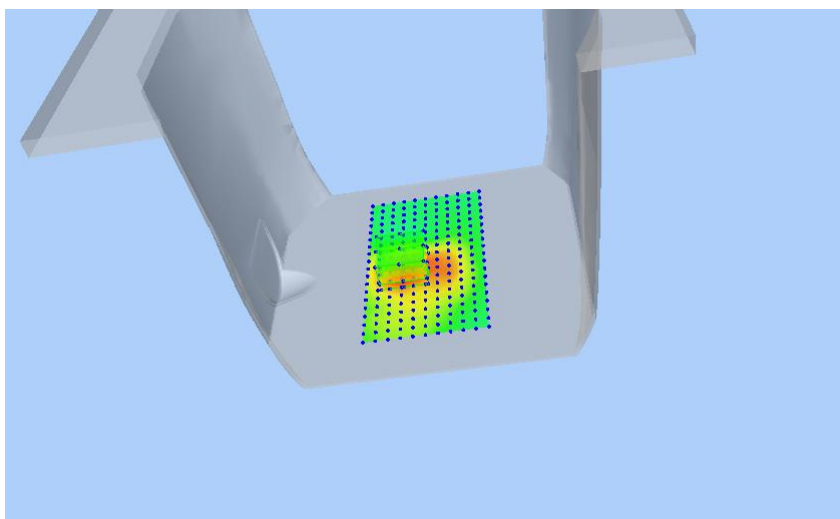
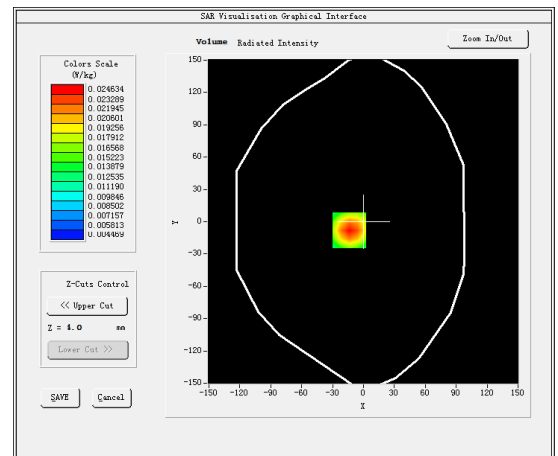
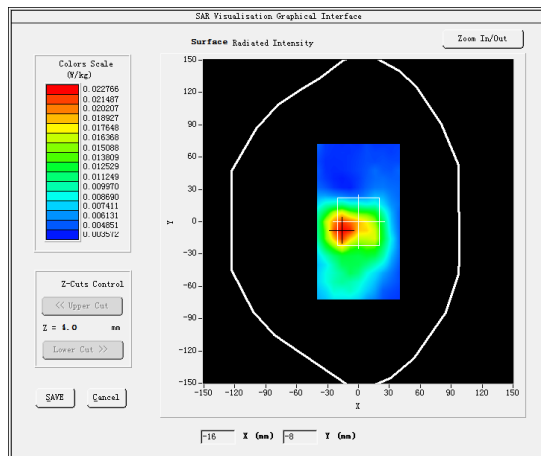
Test Mode: Hotspot GPRS1900MHz,Middle channel< Next – to – Mouth (Front 10mm)>

Product Description: Infinity IoT

Model: Infinity Watch

Test Date: August 20, 2021

Medium(liquid type)	MSL_1900
Frequency (MHz)	1880.0000
Relative permittivity (real part)	38.56
Conductivity (S/m)	1.37
E-Field Probe	SN 31/17 EPGO324
Crest Factor	2.0
Conversion Factor	1.93
Sensor	4mm
Area Scan	dx=8mm dy=8mm
Zoom Scan	5x5x7,dx=8mm dy=8mm dz=5mm
Variation (%)	-0.550000
SAR 10g (W/Kg)	0.014704
SAR 1g (W/Kg)	0.023387
<b>SURFACE SAR</b>	<b>VOLUME SAR</b>





#3

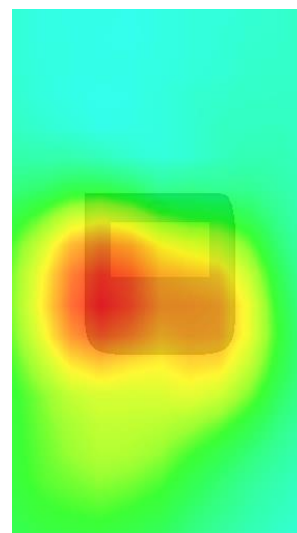
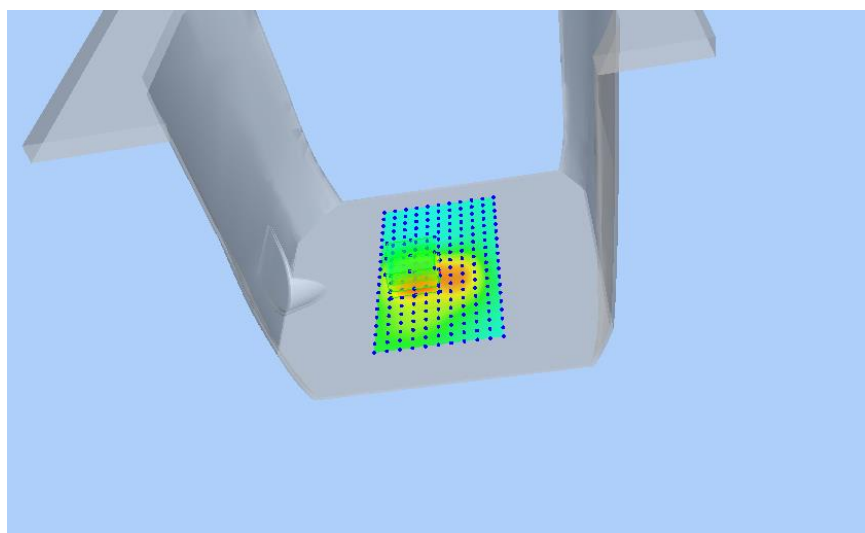
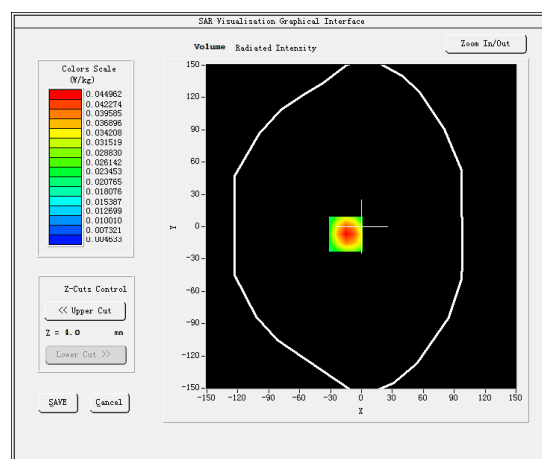
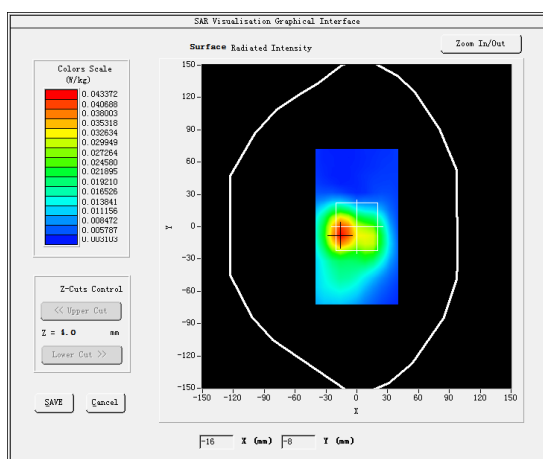
Test Mode: Hotspot WCDMA Band II,Low channel< Next – to – Mouth (Front 10mm)>

Product Description: Infinity IoT

Model: Infinity Watch

Test Date: August 20, 2021

Medium(liquid type)	MSL_1900
Frequency (MHz)	1852.4000
Relative permittivity (real part)	38.56
Conductivity (S/m)	1.37
E-Field Probe	SN 31/17 EPG0324
Crest Factor	1.0
Conversion Factor	1.93
Sensor	4mm
Area Scan	dx=8mm dy=8mm
Zoom Scan	5x5x7,dx=8mm dy=8mm dz=5mm
Variation (%)	-3.260000
SAR 10g (W/Kg)	0.026114
SAR 1g (W/Kg)	0.042508
<b>SURFACE SAR</b>	<b>VOLUME SAR</b>





#4

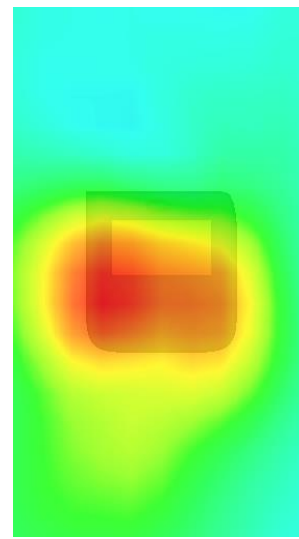
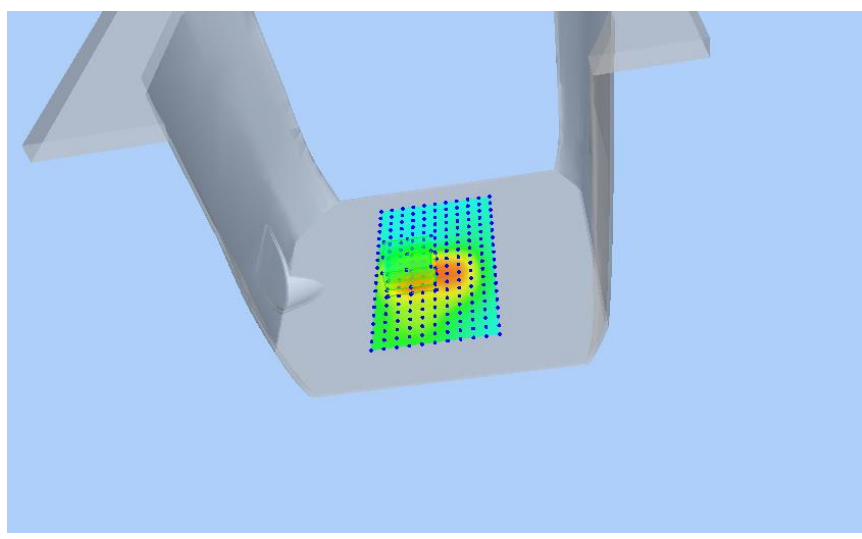
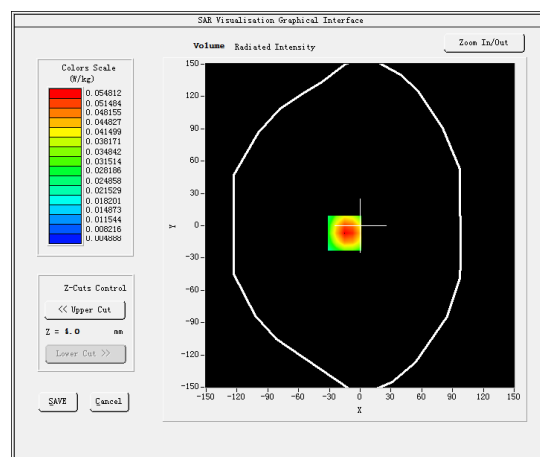
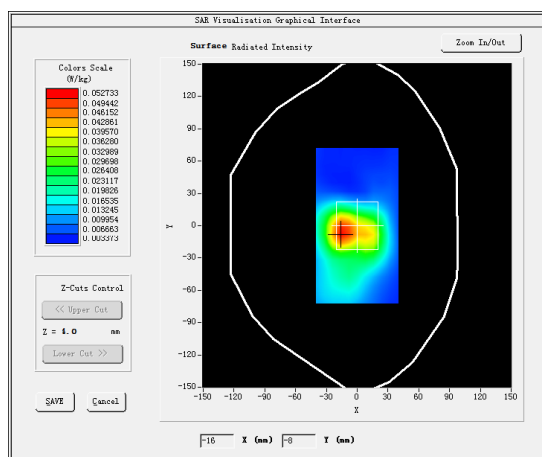
Test Mode: Hotspot LTE Band 2, 1RB,Middle channel< Next – to – Mouth (Front 10mm)>

Product Description: Infinity IoT

Model: Infinity Watch

Test Date: August 20, 2021

Medium(liquid type)	MSL_1900
Frequency (MHz)	1880.0000
Relative permittivity (real part)	38.56
Conductivity (S/m)	1.37
E-Field Probe	SN 31/17 EPG0324
Crest Factor	1.0
Conversion Factor	1.68
Sensor	4mm
Area Scan	dx=8mm dy=8mm
Zoom Scan	5x5x7,dx=8mm dy=8mm dz=5mm
Variation (%)	0.210000
SAR 10g (W/Kg)	0.031705
SAR 1g (W/Kg)	0.052268
<b>SURFACE SAR</b>	<b>VOLUME SAR</b>





#5

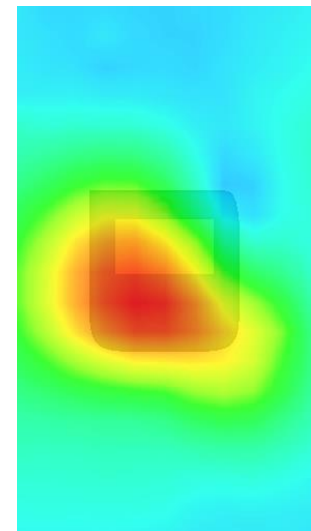
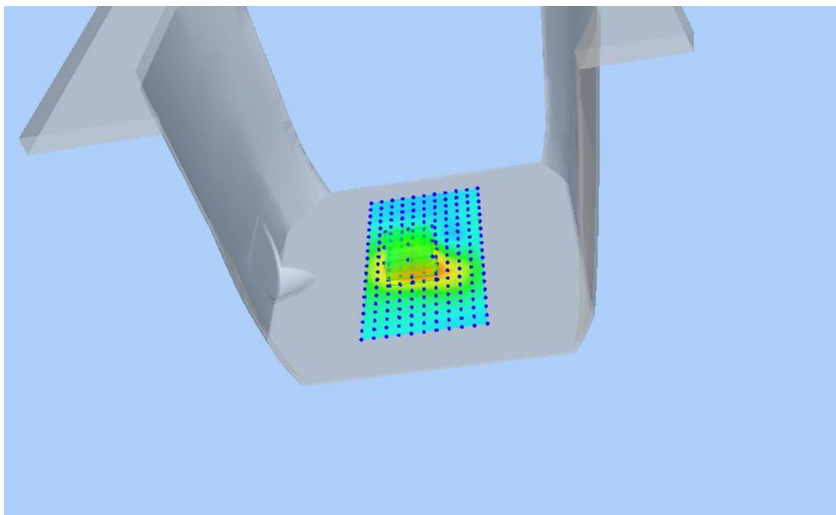
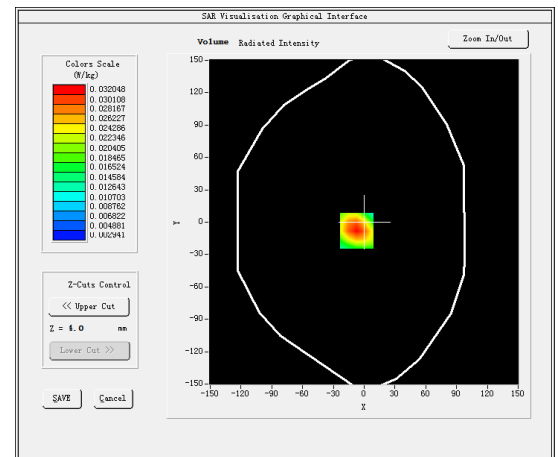
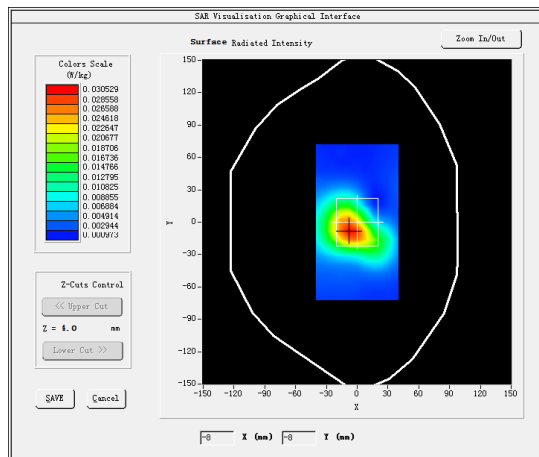
Test Mode: Hotspot LTE Band 4, 1RB, High channel &lt; Next – to – Mouth (Front 10mm)&gt;

Product Description: Infinity IoT

Model: Infinity Watch

Test Date: August 18, 2021

Medium(liquid type)	MSL_1800
Frequency (MHz)	1745.0000
Relative permittivity (real part)	40.64
Conductivity (S/m)	1.43
E-Field Probe	SN 31/17 EPG0324
Crest Factor	1.0
Conversion Factor	1.68
Sensor	4mm
Area Scan	dx=8mm dy=8mm
Zoom Scan	5x5x7,dx=8mm dy=8mm dz=5mm
Variation (%)	1.620000
SAR 10g (W/Kg)	0.018844
SAR 1g (W/Kg)	0.030296
<b>SURFACE SAR</b>	<b>VOLUME SAR</b>





#6

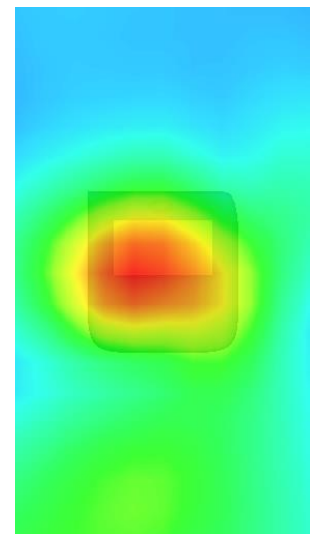
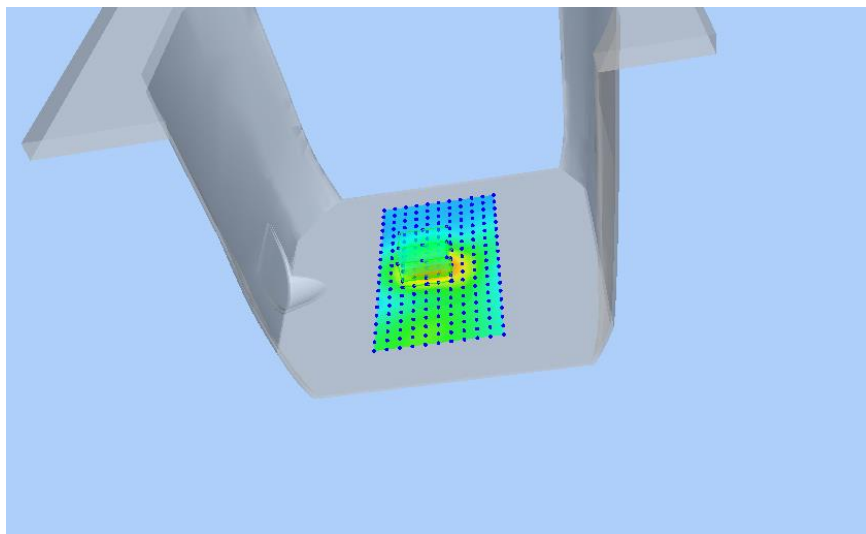
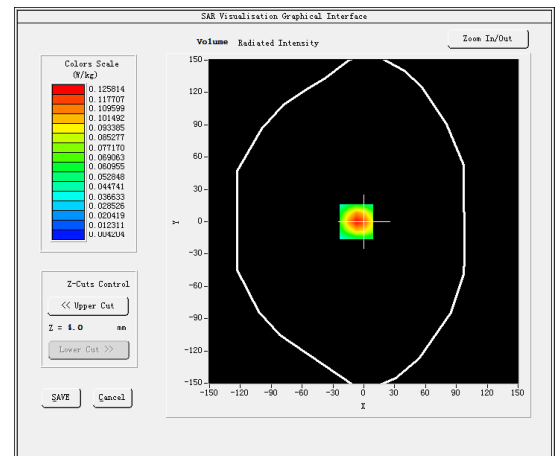
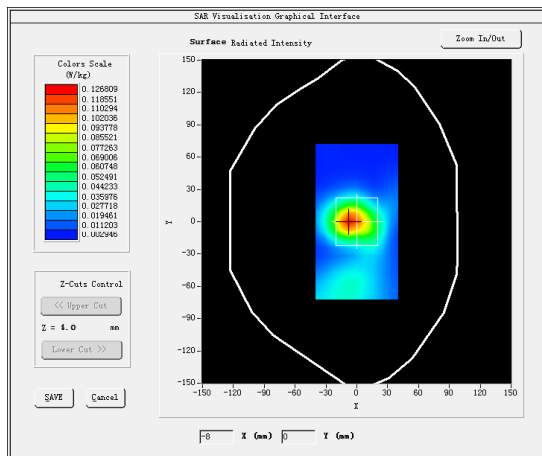
Test Mode: Hotspot LTE Band 7, 1RB,Middle channel< Next – to – Mouth (Front 10mm)>

Product Description: Infinity IoT

Model: Infinity Watch

Test Date: August 28, 2021

Medium(liquid type)	MSL_2600
Frequency (MHz)	2535.0000
Relative permittivity (real part)	38.43
Conductivity (S/m)	1.92
E-Field Probe	SN 31/17 EPG0324
Crest Factor	1.0
Conversion Factor	1.98
Sensor	4mm
Area Scan	dx=8mm dy=8mm
Zoom Scan	5x5x7,dx=8mm dy=8mm dz=5mm
Variation (%)	0.070000
SAR 10g (W/Kg)	0.063344
SAR 1g (W/Kg)	0.117218
<b>SURFACE SAR</b>	<b>VOLUME SAR</b>



## #7

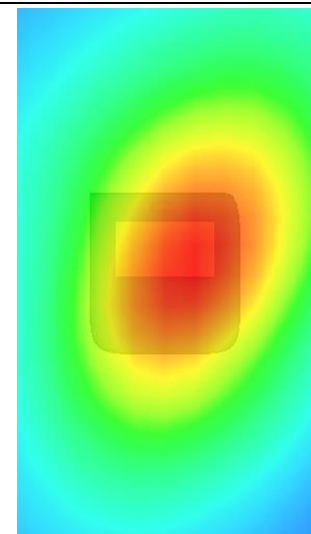
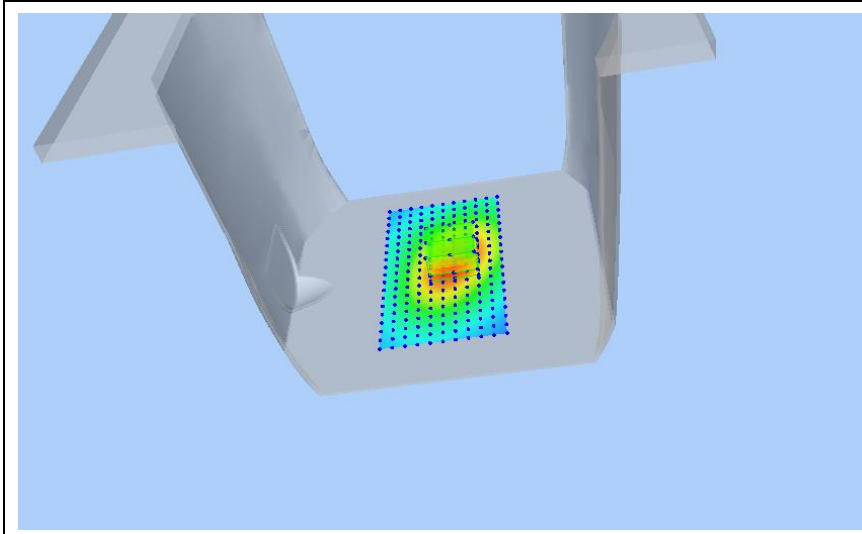
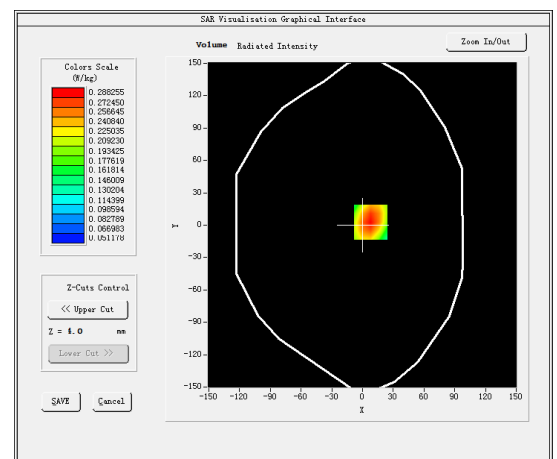
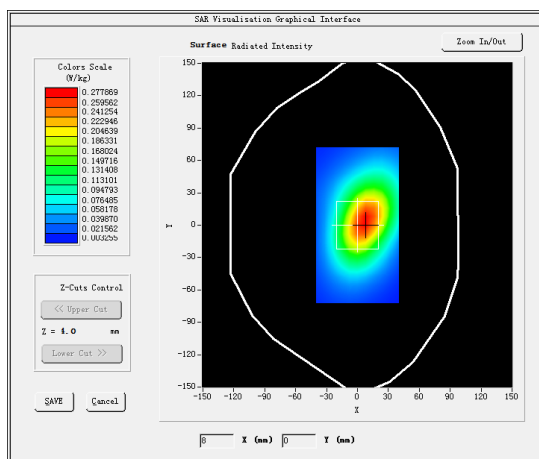
Test Mode: Hotspot LTE Band 17, 1RB, High channel< Next – to – Mouth (Front 10mm)>

## Product Description: Infinity IoT

Model: Infinity Watch

Test Date: August 10, 2021

Medium(liquid type)	MSL_750
Frequency (MHz)	711.0000
Relative permittivity (real part)	42.06
Conductivity (S/m)	0.88
E-Field Probe	SN 31/17 EPG0324
Crest Factor	1.0
Conversion Factor	1.50
Sensor	4mm
Area Scan	dx=8mm dy=8mm
Zoom Scan	5x5x7,dx=8mm dy=8mm dz=5mm
Variation (%)	0.100000
SAR 10g (W/Kg)	0.197736
SAR 1g (W/Kg)	0.290513
<b>SURFACE SAR</b>	<b>VOLUME SAR</b>





#8

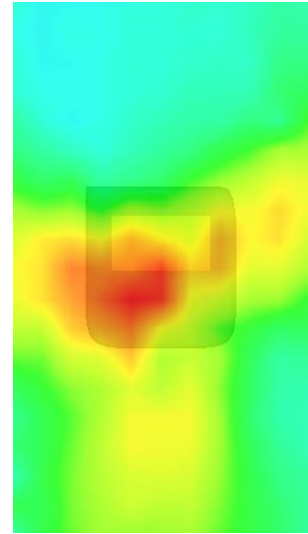
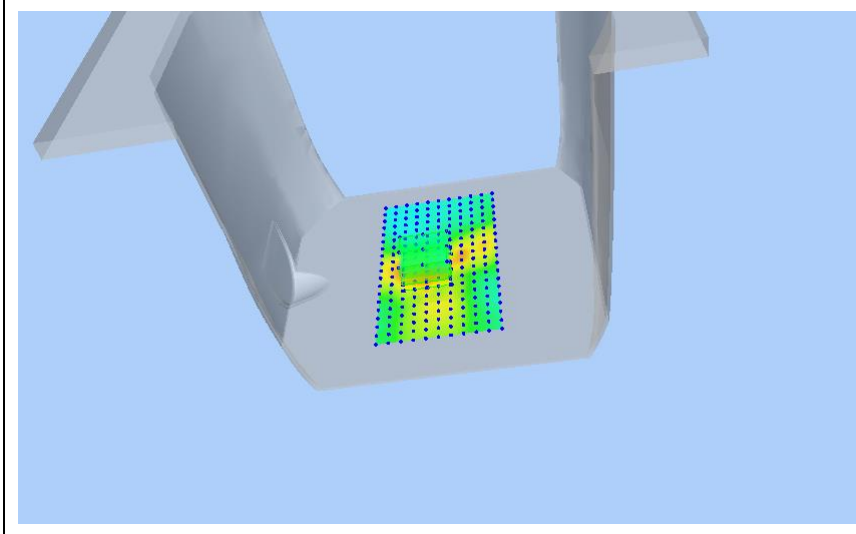
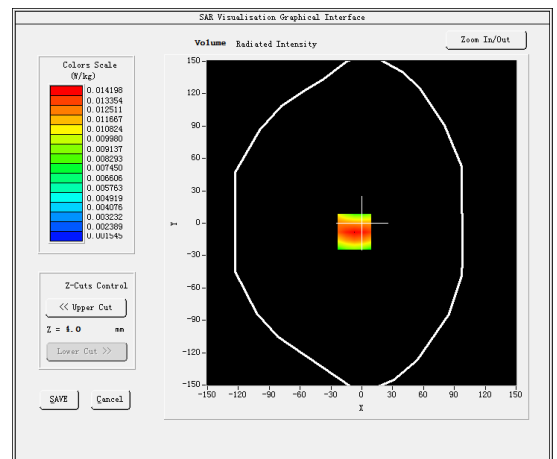
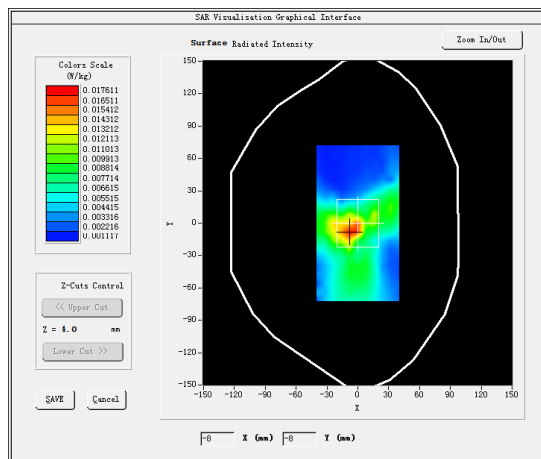
Test Mode: Hotspot 802.11n20(WiFi2.4G),Low channel &lt; Next – to – Mouth (Front 10mm)&gt;

Product Description: Infinity IoT

Model: Infinity Watch

Test Date: August 25, 2021

Medium(liquid type)	MSL_2450
Frequency (MHz)	2412.0000
Relative permittivity (real part)	39.70
Conductivity (S/m)	1.84
E-Field Probe	SN 31/17 EPGO324
Crest Factor	1.0
Conversion Factor	1.95
Sensor	4mm
Area Scan	dx=8mm dy=8mm
Zoom Scan	5x5x7,dx=8mm dy=8mm dz=5mm
Variation (%)	-1.330000
SAR 10g (W/Kg)	0.008328
SAR 1g (W/Kg)	0.014109
<b>SURFACE SAR</b>	<b>VOLUME SAR</b>







#9

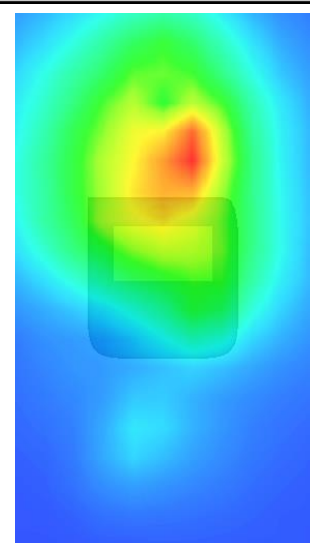
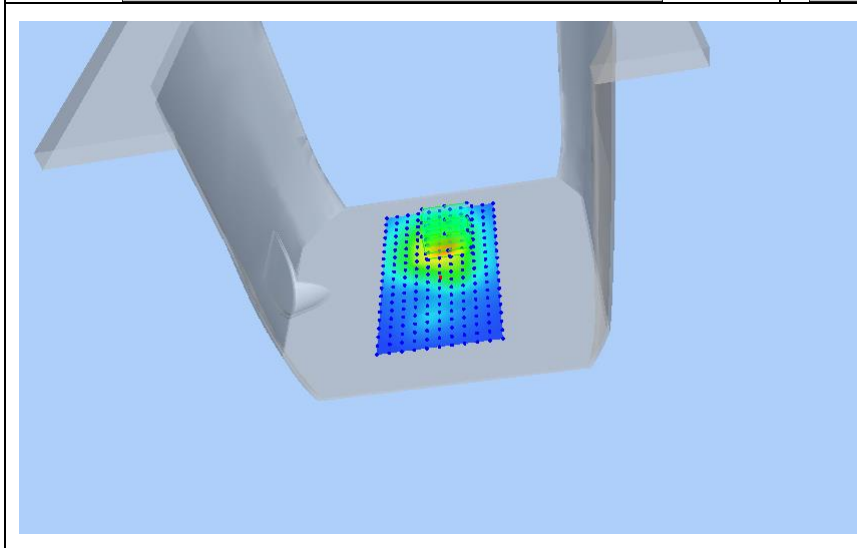
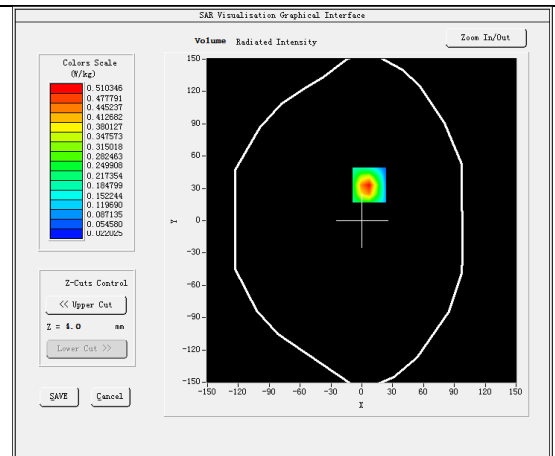
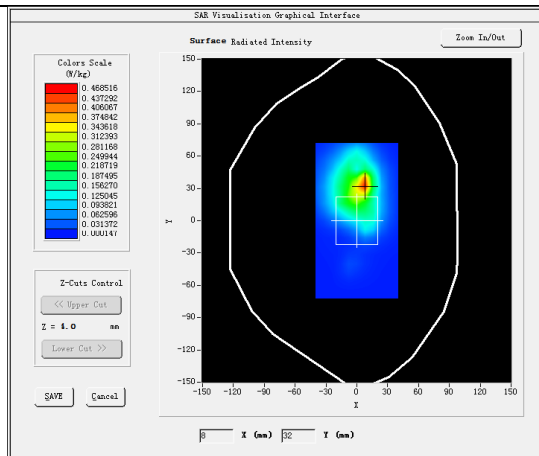
Test Mode: Hotspot GSM850MHz,Middle channel< Extremity Exposure (Rear 0mm)>

Product Description: Infinity IoT

Model: Infinity Watch

Test Date: August 14, 2021

Medium(liquid type)	MSL_850
Frequency (MHz)	836.6000
Relative permittivity (real part)	42.82
Conductivity (S/m)	0.92
E-Field Probe	SN 31/17 EPG0324
Crest Factor	2.0
Conversion Factor	1.59
Sensor	4mm
Area Scan	dx=8mm dy=8mm
Zoom Scan	5x5x7,dx=8mm dy=8mm dz=5mm
Variation (%)	-3.260000
SAR 10g (W/Kg)	0.239102
SAR 1g (W/Kg)	0.477942
SURFACE SAR	VOLUME SAR



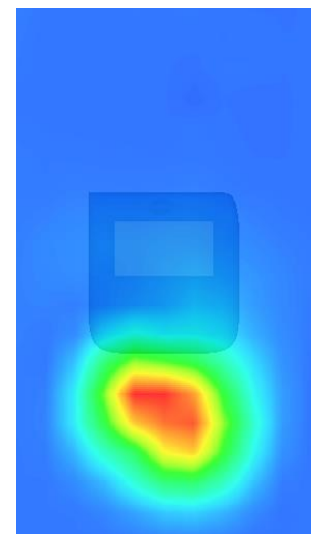
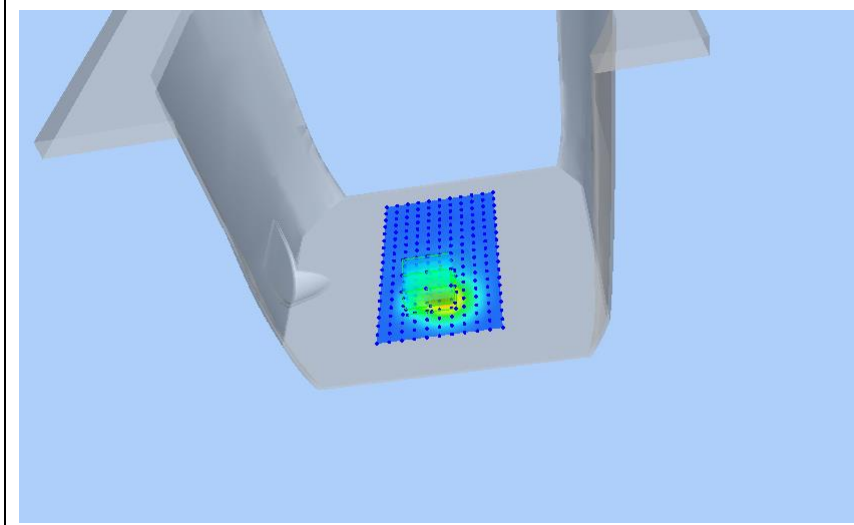
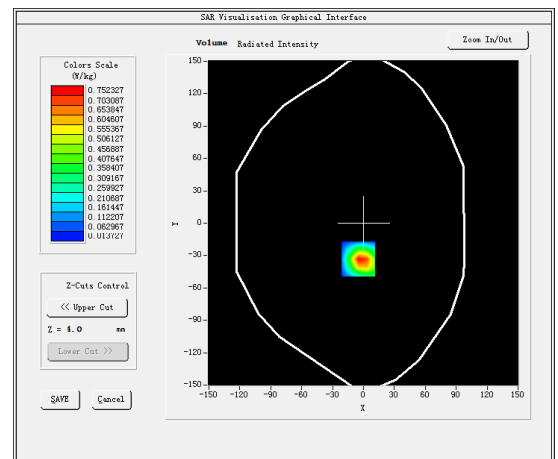
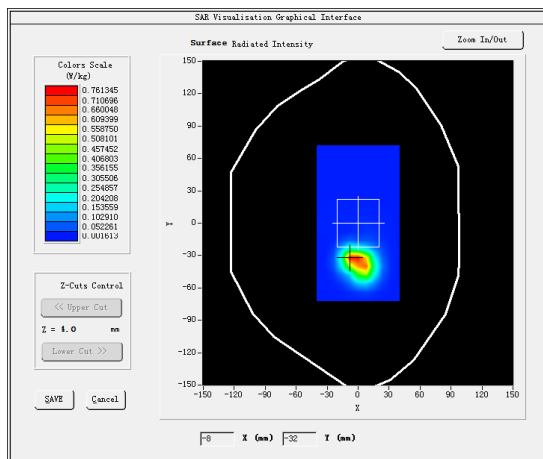




#10

Test Mode: Hotspot GPRS1900MHz,Middle channel< Extremity Exposure (Rear 0mm)>  
Product Description: Infinity IoT  
Model: Infinity Watch  
Test Date: August 20, 2021

Medium(liquid type)	MSL_1900
Frequency (MHz)	1880.0000
Relative permittivity (real part)	38.56
Conductivity (S/m)	1.37
E-Field Probe	SN 31/17 EPGO324
Crest Factor	2.0
Conversion Factor	1.93
Sensor	4mm
Area Scan	dx=8mm dy=8mm
Zoom Scan	5x5x7,dx=8mm dy=8mm dz=5mm
Variation (%)	1.130000
SAR 10g (W/Kg)	0.323915
SAR 1g (W/Kg)	0.710371
<b>SURFACE SAR</b>	<b>VOLUME SAR</b>





#11

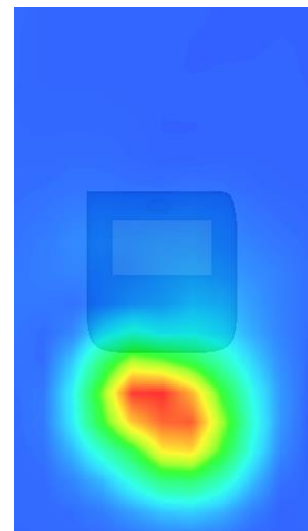
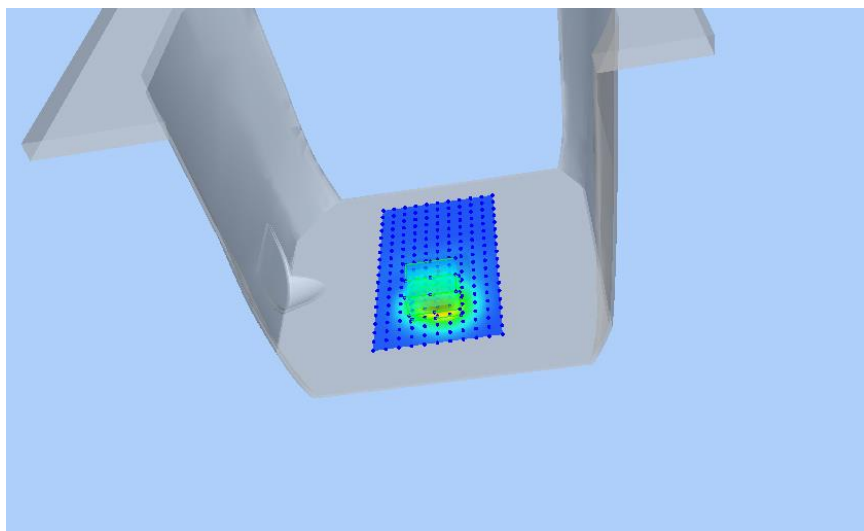
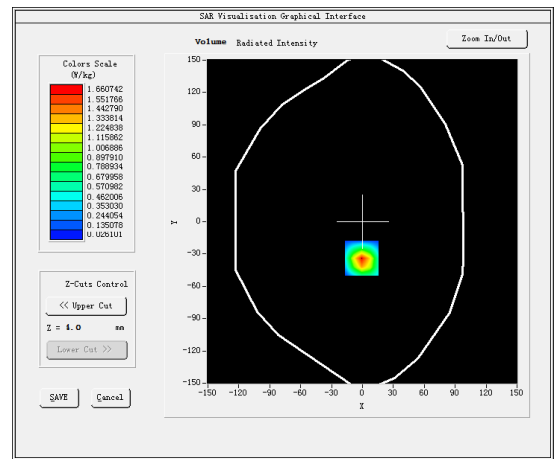
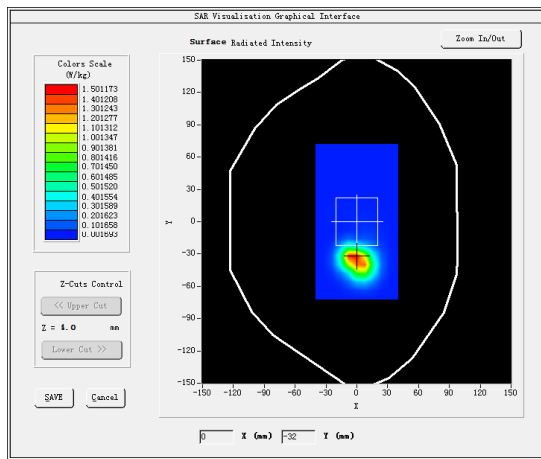
Test Mode: Hotspot WCDMA Band II,Low channel< Extremity Exposure (Rear 0mm)>

Product Description: Infinity IoT

Model: Infinity Watch

Test Date: August 20, 2021

Medium(liquid type)	MSL_1900
Frequency (MHz)	1852.4000
Relative permittivity (real part)	38.56
Conductivity (S/m)	1.37
E-Field Probe	SN 31/17 EPG0324
Crest Factor	1.0
Conversion Factor	1.93
Sensor	4mm
Area Scan	dx=8mm dy=8mm
Zoom Scan	5x5x7,dx=8mm dy=8mm dz=5mm
Variation (%)	-0.590000
SAR 10g (W/Kg)	0.666077
SAR 1g (W/Kg)	1.516899
<b>SURFACE SAR</b>	<b>VOLUME SAR</b>





#12

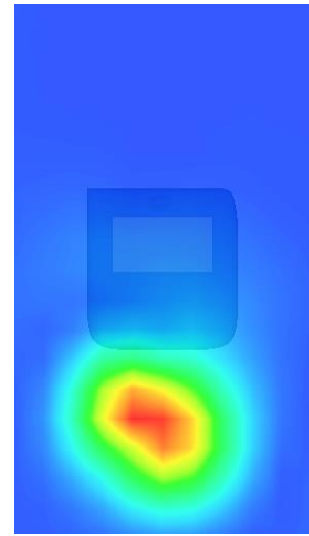
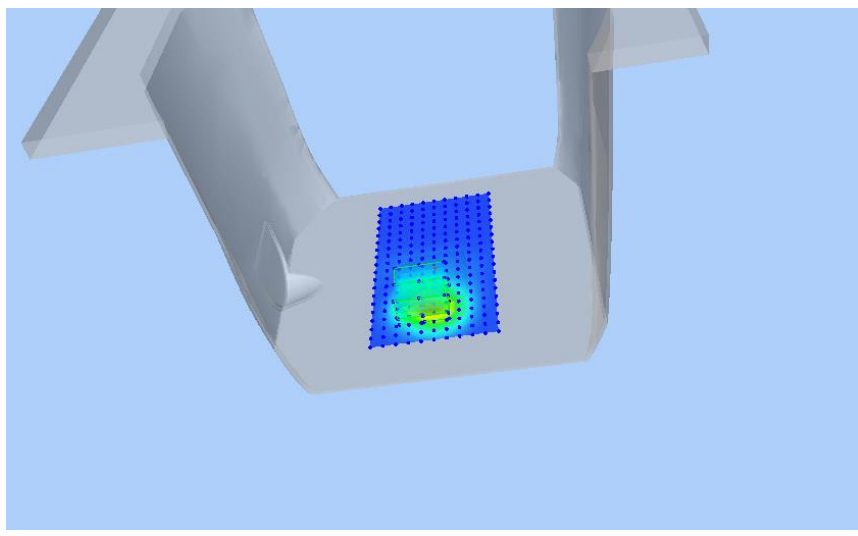
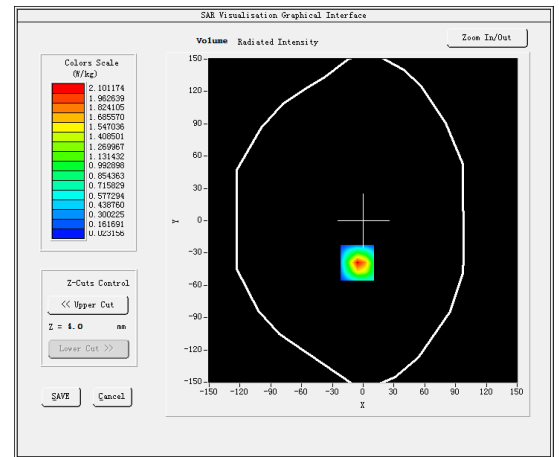
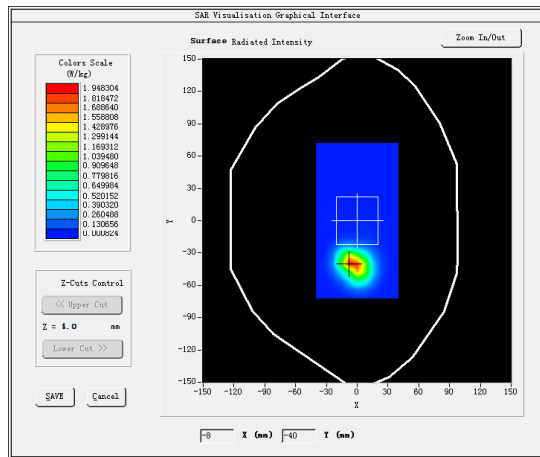
Test Mode: Hotspot LTE Band 2, 1RB,Middle channel< Extremity Exposure (Rear 0mm)>

Product Description: Infinity IoT

Model: Infinity Watch

Test Date: August 20, 2021

Medium(liquid type)	MSL_1900
Frequency (MHz)	1880.0000
Relative permittivity (real part)	38.56
Conductivity (S/m)	1.37
E-Field Probe	SN 31/17 EPG0324
Crest Factor	1.0
Conversion Factor	1.68
Sensor	4mm
Area Scan	dx=8mm dy=8mm
Zoom Scan	5x5x7,dx=8mm dy=8mm dz=5mm
Variation (%)	0.800000
SAR 10g (W/Kg)	0.833686
SAR 1g (W/Kg)	1.874234
<b>SURFACE SAR</b>	<b>VOLUME SAR</b>

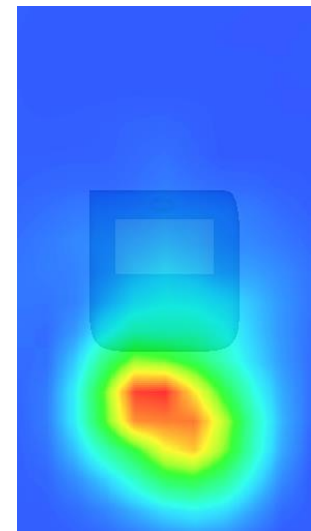
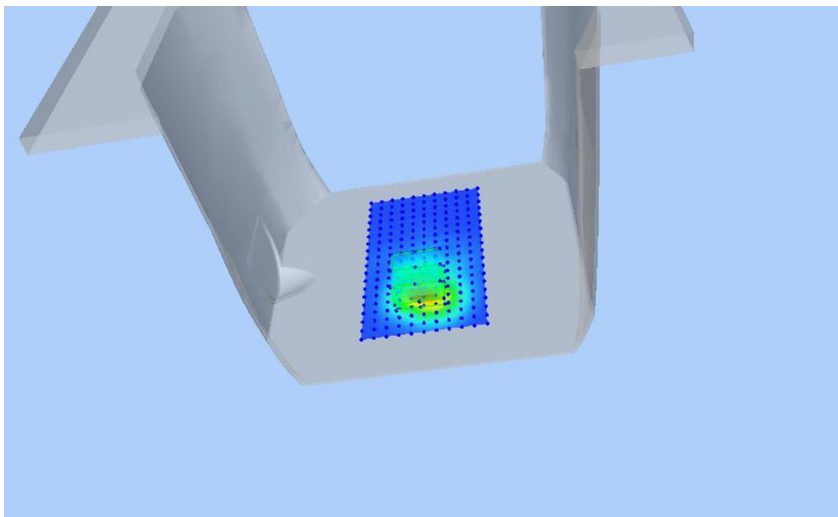
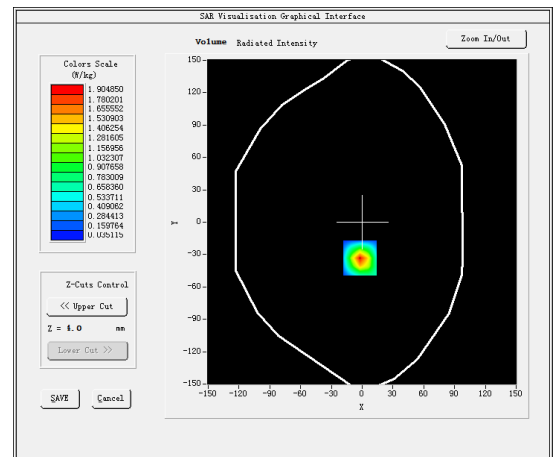
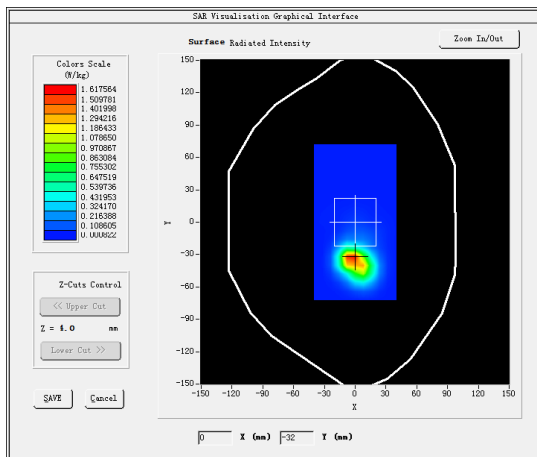




#13

Test Mode: Hotspot LTE Band 4, 1RB, High channel< Extremity Exposure (Rear 0mm)>  
Product Description: Infinity IoT  
Model: Infinity Watch  
Test Date: August 18, 2021

Medium(liquid type)	MSL_1800
Frequency (MHz)	1745.0000
Relative permittivity (real part)	40.64
Conductivity (S/m)	1.43
E-Field Probe	SN 31/17 EPG0324
Crest Factor	1.0
Conversion Factor	1.68
Sensor	4mm
Area Scan	dx=8mm dy=8mm
Zoom Scan	5x5x7,dx=8mm dy=8mm dz=5mm
Variation (%)	-2.050000
SAR 10g (W/Kg)	0.741796
SAR 1g (W/Kg)	1.734041
<b>SURFACE SAR</b>	<b>VOLUME SAR</b>





#14

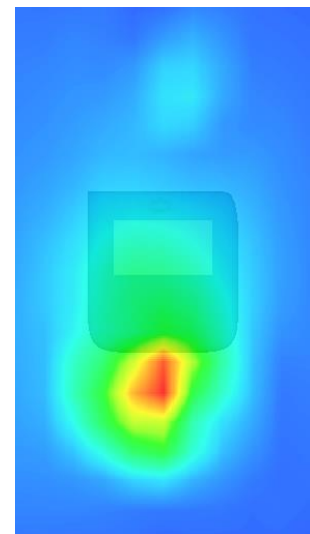
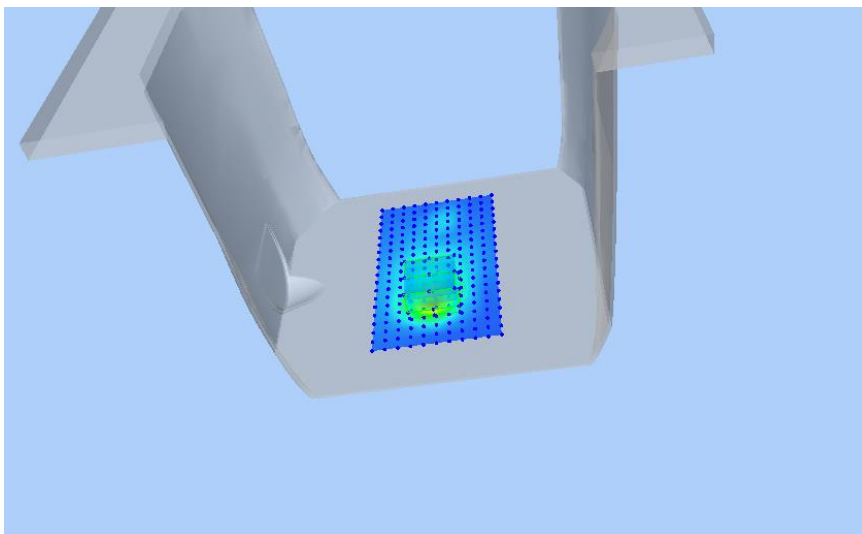
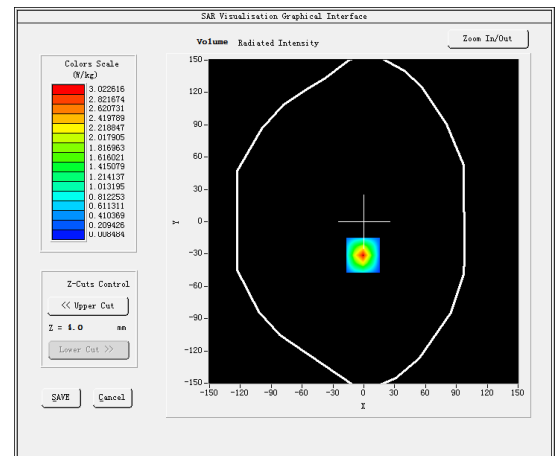
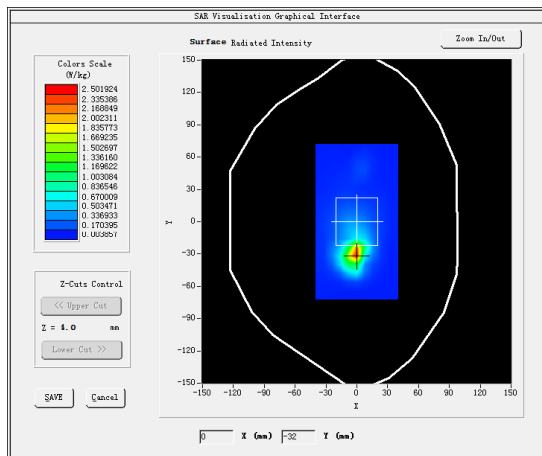
Test Mode: Hotspot LTE Band 7, 1RB,Middle channel&lt; Extremity Exposure (Rear 0mm)&gt;

Product Description: Infinity IoT

Model: Infinity Watch

Test Date: August 28, 2021

Medium(liquid type)	MSL_2600
Frequency (MHz)	2535.0000
Relative permittivity (real part)	38.43
Conductivity (S/m)	1.92
E-Field Probe	SN 31/17 EPG0324
Crest Factor	1.0
Conversion Factor	1.98
Sensor	4mm
Area Scan	dx=8mm dy=8mm
Zoom Scan	5x5x7,dx=8mm dy=8mm dz=5mm
Variation (%)	-0.580000
SAR 10g (W/Kg)	1.036818
SAR 1g (W/Kg)	1.780185
<b>SURFACE SAR</b>	<b>VOLUME SAR</b>





#15

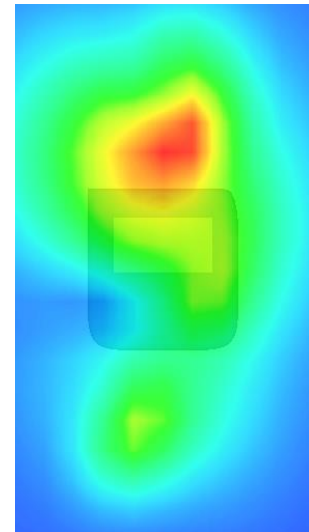
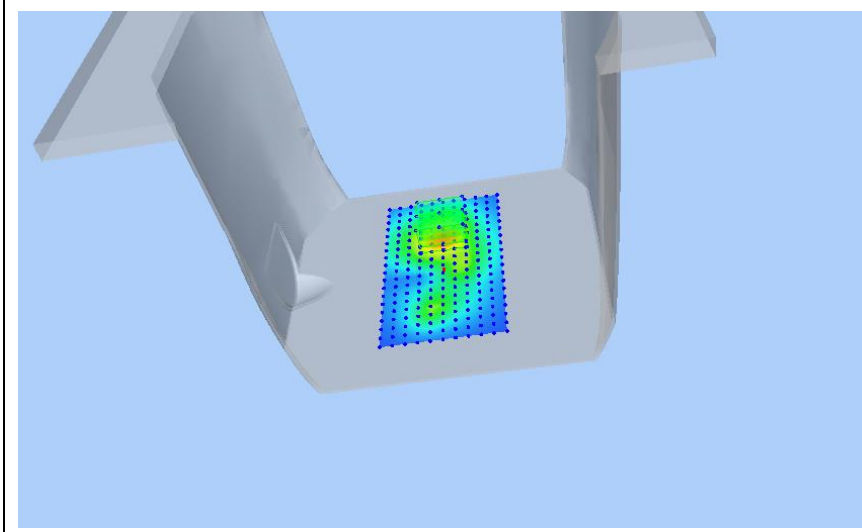
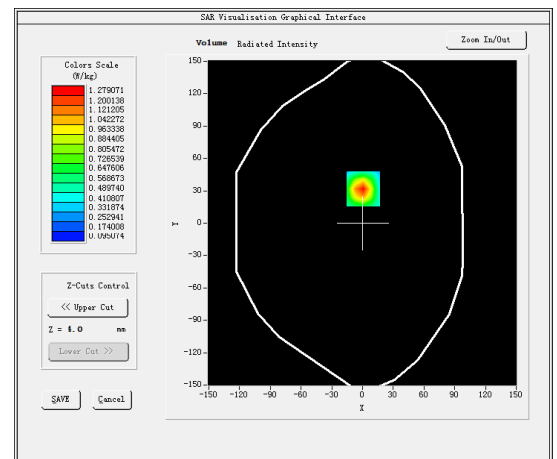
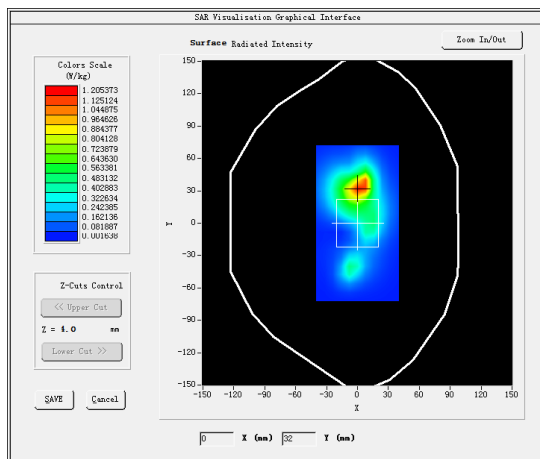
Test Mode: Hotspot LTE Band 17, 1RB, High channel &lt; Extremity Exposure (Rear 0mm)&gt;

Product Description: Infinity IoT

Model: Infinity Watch

Test Date: August 10, 2021

Medium(liquid type)	MSL_750
Frequency (MHz)	711.0000
Relative permittivity (real part)	42.06
Conductivity (S/m)	0.88
E-Field Probe	SN 31/17 EPGO324
Crest Factor	1.0
Conversion Factor	1.50
Sensor	4mm
Area Scan	dx=8mm dy=8mm
Zoom Scan	5x5x7, dx=8mm dy=8mm dz=5mm
Variation (%)	1.120000
SAR 10g (W/Kg)	0.680388
SAR 1g (W/Kg)	1.251440
<b>SURFACE SAR</b>	<b>VOLUME SAR</b>





#16

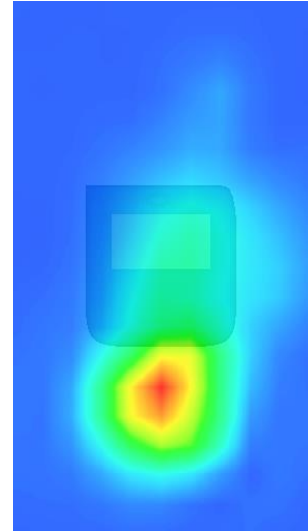
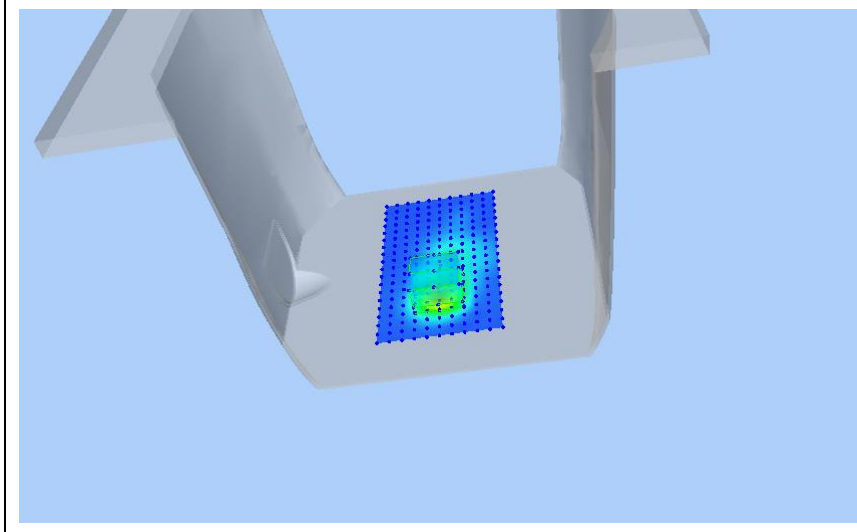
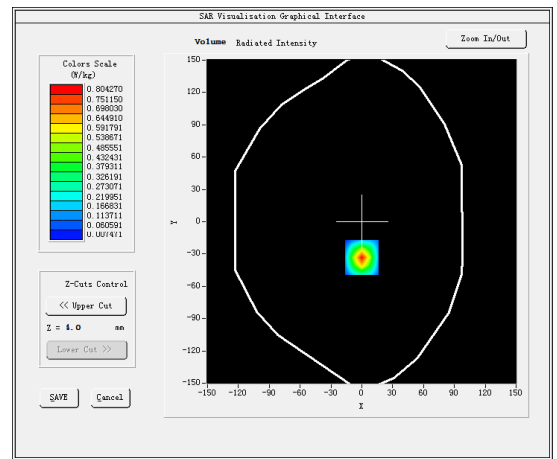
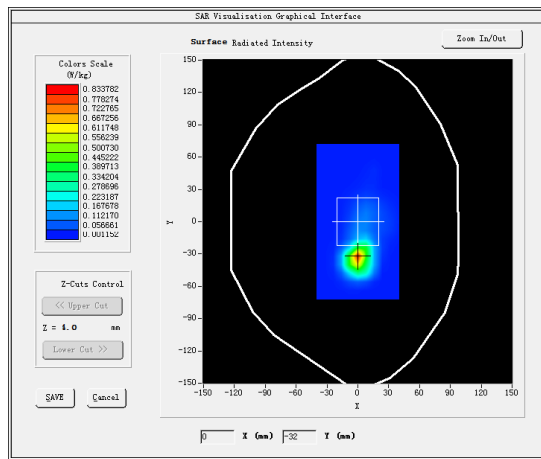
Test Mode: Hotspot 802.11n20(WiFi2.4G),Low channel &lt; Extremity Exposure (Rear 0mm)&gt;

Product Description: Infinity IoT

Model: Infinity Watch

Test Date: August 25, 2021

Medium(liquid type)	MSL_2450
Frequency (MHz)	2412.0000
Relative permittivity (real part)	39.70
Conductivity (S/m)	1.84
E-Field Probe	SN 31/17 EPGO324
Crest Factor	1.0
Conversion Factor	1.95
Sensor	4mm
Area Scan	dx=8mm dy=8mm
Zoom Scan	5x5x7,dx=8mm dy=8mm dz=5mm
Variation (%)	-3.690000
SAR 10g (W/Kg)	0.294337
SAR 1g (W/Kg)	0.721200
<b>SURFACE SAR</b>	<b>VOLUME SAR</b>







## 5. CALIBRATION CERTIFICATES

### 5.1 Probe-EPGO324 Calibration Certificate



#### COMOSAR E-Field Probe Calibration Report

Ref : ACR.281.2.18.SATU.A

#### **SHENZHEN LCS COMPLIANCE TESTING LABORATORY LTD.**

**1F., XINGYUAN INDUSTRIAL PARK, TONGDA ROAD,  
BAO'AN BLVD  
BAO'AN DISTRICT, SHENZHEN, GUANGDONG, CHINA  
MVG COMOSAR DOSIMETRIC E-FIELD PROBE  
SERIAL NO.: SN 31/17 EPGO324**

**Calibrated at MVG US**

**2105 Barrett Park Dr. - Kennesaw, GA 30144**



**Calibration Date: 10/07/2020**

#### *Summary:*

This document presents the method and results from an accredited COMOSAR Dosimetric E-Field Probe calibration performed in MVG USA using the CALISAR / CALIBAIR test bench, for use with a COMOSAR system only. All calibration results are traceable to national metrology institutions.





## COMOSAR E-FIELD PROBE CALIBRATION REPORT

Ref: ACR.281.2.18.SATU.A

	Name	Function	Date	Signature
Prepared by :	Jérôme LUC	Product Manager	10/7/2020	<i>JS</i>
Checked by :	Jérôme LUC	Product Manager	10/7/2020	<i>JS</i>
Approved by :	Kim RUTKOWSKI	Quality Manager	10/7/2020	<i>Kim Rutkowski</i>

	Customer Name
Distribution :	Shenzhen LCS Compliance Testing Laboratory Ltd.

Issue	Date	Modifications
A	10/7/2020	Initial release

Page: 2/10

This document shall not be reproduced, except in full or in part, without the written approval of MVG.  
The information contained herein is to be used only for the purpose for which it is submitted and is not to be released in whole or part without written approval of MVG.



## COMOSAR E-FIELD PROBE CALIBRATION REPORT

Ref: ACR.281.2.18.SATU.A

### TABLE OF CONTENTS

1	Device Under Test .....	4
2	Product Description .....	4
2.1	General Information .....	4
3	Measurement Method .....	4
3.1	Linearity .....	4
3.2	Sensitivity .....	5
3.3	Lower Detection Limit .....	5
3.4	Isotropy .....	5
3.5	Boundary Effect .....	5
4	Measurement Uncertainty .....	5
5	Calibration Measurement Results .....	6
5.1	Sensitivity in air .....	6
5.2	Linearity .....	7
5.3	Sensitivity in liquid .....	7
5.4	Isotropy .....	8
6	List of Equipment .....	10

Page: 3/10

*This document shall not be reproduced, except in full or in part, without the written approval of MVG.  
The information contained herein is to be used only for the purpose for which it is submitted and is not to  
be released in whole or part without written approval of MVG.*



## COMOSAR E-FIELD PROBE CALIBRATION REPORT

Ref: ACR.281.2.18.SATU.A

## 1 DEVICE UNDER TEST

Device Under Test	
Device Type	COMOSAR DOSIMETRIC E FIELD PROBE
Manufacturer	MVG
Model	SSE2
Serial Number	SN 31/17 EPGO324
Product Condition (new / used)	New
Frequency Range of Probe	0.15 GHz-6GHz
Resistance of Three Dipoles at Connector	Dipole 1: R1=0.189 MΩ Dipole 2: R2=0.203 MΩ Dipole 3: R3=0.218 MΩ

A yearly calibration interval is recommended.

## 2 PRODUCT DESCRIPTION

### 2.1 GENERAL INFORMATION

MVG's COMOSAR E field Probes are built in accordance to the IEEE 1528, OET 65 Bulletin C and CEI/IEC 62209 standards.



**Figure 1** – MVG COMOSAR Dosimetric E field Dipole

Probe Length	330 mm
Length of Individual Dipoles	2 mm
Maximum external diameter	8 mm
Probe Tip External Diameter	2.5 mm
Distance between dipoles / probe extremity	1 mm

## 3 MEASUREMENT METHOD

The IEEE 1528, OET 65 Bulletin C, CENELEC EN50361 and CEI/IEC 62209 standards provide recommended practices for the probe calibrations, including the performance characteristics of interest and methods by which to assess their affect. All calibrations / measurements performed meet the fore mentioned standards.

### 3.1 LINEARITY

The evaluation of the linearity was done in free space using the waveguide, performing a power sweep to cover the SAR range 0.01W/kg to 100W/kg.

Page: 4/10

*This document shall not be reproduced, except in full or in part, without the written approval of MVG.  
The information contained herein is to be used only for the purpose for which it is submitted and is not to be released in whole or part without written approval of MVG.*



## COMOSAR E-FIELD PROBE CALIBRATION REPORT

Ref: ACR.281.2.18.SATU.A

### 3.2 SENSITIVITY

The sensitivity factors of the three dipoles were determined using a two step calibration method (air and tissue simulating liquid) using waveguides as outlined in the standards.

### 3.3 LOWER DETECTION LIMIT

The lower detection limit was assessed using the same measurement set up as used for the linearity measurement. The required lower detection limit is 10 mW/kg.

### 3.4 ISOTROPY

The axial isotropy was evaluated by exposing the probe to a reference wave from a standard dipole with the dipole mounted under the flat phantom in the test configuration suggested for system validations and checks. The probe was rotated along its main axis from 0 - 360 degrees in 15 degree steps. The hemispherical isotropy is determined by inserting the probe in a thin plastic box filled with tissue-equivalent liquid, with the plastic box illuminated with the fields from a half wave dipole. The dipole is rotated about its axis (0°–180°) in 15° increments. At each step the probe is rotated about its axis (0°–360°).

### 3.5 BOUNDARY EFFECT

The boundary effect is defined as the deviation between the SAR measured data and the expected exponential decay in the liquid when the probe is oriented normal to the interface. To evaluate this effect, the liquid filled flat phantom is exposed to fields from either a reference dipole or waveguide. With the probe normal to the phantom surface, the peak spatial average SAR is measured and compared to the analytical value at the surface.

## 4 MEASUREMENT UNCERTAINTY

The guidelines outlined in the IEEE 1528, OET 65 Bulletin C, CENELEC EN50361 and CEI/IEC 62209 standards were followed to generate the measurement uncertainty associated with an E-field probe calibration using the waveguide technique. All uncertainties listed below represent an expanded uncertainty expressed at approximately the 95% confidence level using a coverage factor of  $k=2$ , traceable to the Internationally Accepted Guides to Measurement Uncertainty.

Uncertainty analysis of the probe calibration in waveguide					
ERROR SOURCES	Uncertainty value (%)	Probability Distribution	Divisor	ci	Standard Uncertainty (%)
Incident or forward power	3.00%	Rectangular	$\sqrt{3}$	1	1.732%
Reflected power	3.00%	Rectangular	$\sqrt{3}$	1	1.732%
Liquid conductivity	5.00%	Rectangular	$\sqrt{3}$	1	2.887%
Liquid permittivity	4.00%	Rectangular	$\sqrt{3}$	1	2.309%
Field homogeneity	3.00%	Rectangular	$\sqrt{3}$	1	1.732%
Field probe positioning	5.00%	Rectangular	$\sqrt{3}$	1	2.887%

Page: 5/10

This document shall not be reproduced, except in full or in part, without the written approval of MVG.  
The information contained herein is to be used only for the purpose for which it is submitted and is not to be released in whole or part without written approval of MVG.



## COMOSAR E-FIELD PROBE CALIBRATION REPORT

Ref: ACR.281.2.18.SATU.A

Field probe linearity	3.00%	Rectangular	$\sqrt{3}$	1	1.732%
Combined standard uncertainty					5.831%
Expanded uncertainty 95 % confidence level k = 2					12.0%

## 5 CALIBRATION MEASUREMENT RESULTS

Calibration Parameters	
Liquid Temperature	21 °C
Lab Temperature	21 °C
Lab Humidity	45 %

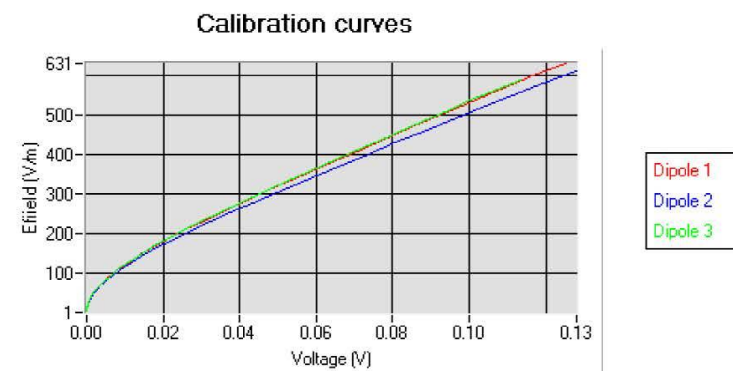
## 5.1 SENSITIVITY IN AIR

Normx dipole 1 ( $\mu\text{V}/(\text{V}/\text{m})^2$ )	Normy dipole 2 ( $\mu\text{V}/(\text{V}/\text{m})^2$ )	Normz dipole 3 ( $\mu\text{V}/(\text{V}/\text{m})^2$ )
0.80	0.83	0.68

DCP dipole 1 (mV)	DCP dipole 2 (mV)	DCP dipole 3 (mV)
95	90	93

Calibration curves  $e_i=f(V)$  ( $i=1,2,3$ ) allow to obtain H-field value using the formula:

$$E = \sqrt{E_1^2 + E_2^2 + E_3^2}$$



Page: 6/10

This document shall not be reproduced, except in full or in part, without the written approval of MVG.  
The information contained herein is to be used only for the purpose for which it is submitted and is not to be released in whole or part without written approval of MVG.