

# Tilt Five Products User Manual

*This document will be online on TiltFive.com website. There won't be a printed copy.*

## Sections:

**A** <<Picture of the following with explanation of the buttons>>

1. Tilt Five(™) AR Glasses
2. Tilt Five(™) Wand <<add the commentary as the user will need 2AA batteries to operate it>>
3. Tilt Five(™) XE Gameboard
4. Accessory Kit: Tilt Five(™) USB-C Cable, Reversible USB Adaptor, Glasses Lens Cleaning Cloth

## B. Welcome!

Welcome to Tilt Five! Thank you for being here! We believe in bringing friends, families and individuals back to the table for fun times with Tabletop AR. This product works on Windows PC and Android platforms.

## C. Getting Started

- Connecting your Glasses & Wand
  - Using the official Tilt Five USB-C cable, connect your glasses to a supported Windows10 PC or Android device (coming soon)
  - Insert 2 AA batteries into your Wand (not-included)
  - Download [Tilt Five Demo Games] app on [www.tiltfive.com/download/games](http://www.tiltfive.com/download/games)
  - Launch the game
  - Press the 'System' button on your Wand to pair it to your Glasses for the first time, you should see a green light indicator once it pairs successfully.

## D. Purchasing Games & Apps

- Purchasing Games
  - To purchase games on your Tilt Five device, go to [www.tiltfive.com/buynow](http://www.tiltfive.com/buynow) to see our complete Games Library. Once you select a game you would like to purchase, you will be redirected to a 3rd party website (e.g. Steam, Google Play App Store) where you can complete your purchase and download your game.

## E.Accessories

- Cables
  - When connecting your Tilt Five Glasses to either your Windows10 PC or Android device, we recommend using the official Tilt Five USB-C cable included in the original packaging.
- Extension cables

- There are no officially supported extension cables compatible with the official Tilt Five USB-C cable.

## Wand-Glasses Pairing

Your wand comes pre-paired with your glasses in the factory. But, if for some reason, the pair was broken, follow the instructions below:

An **Un-Paired** Wand has no association with glasses and when powered on will enter **Requesting Code** state to make an initial connection. Typically once the initial connection succeeds, the glasses **Pairs** the Wand (sharing a secret key that the Wand stores in nonvolatile memory).

A **Paired** Wand has an association with a specific glasses, via shared secret key, and will enter **Connecting** state when powered on, attempting to reconnect to that specific Headset.

If a Wand is powered on using the special sequence “Press and hold **X + B + Home Buttons** until RED LED lights”, the Wand will erase any shared secret key from nonvolatile storage, return to the **Un-Paired** state, and enter **Requesting Code** state to make a new connection.

## t5 Wand Operation Notes

firmware version 0.7.3

Visible Indicator	Wand State	Possible User Actions	Notes
No LED	<b>No Power</b>	Insert or Replace Batteries	
	<b>Standby</b>	Tap <b>Home Button</b> to wake up. (Wand will enter <b>Connected</b> or <b>Requesting Code</b> , depending on if it is <b>paired</b> or not).	
		Press <b>X + B + Home Button</b> simultaneously until RED LED lights to wake up, unbind, and enter <b>Requesting Code</b> .	
Short GREEN blink once per second	<b>Connected</b>	Hold <b>Home Button</b> for 5 seconds, release when RED LED lights, to enter <b>Standby</b> .	Will automatically go to <b>Standby</b> if it loses connection to glasses for > 1 second.
Fast RED blink	<b>Requesting Code</b>	Enter four symbols (1 2 X Y A B) as prompted. The LED will flash Green and the motor will kick when a	After 30 seconds, wand returns to <b>Standby</b> . This timer restarts at 30 seconds, whenever a button is

		symbol is entered. Wand will go to <b>Connecting</b> after the fourth entry.	pressed.
Solid RED	<b>Connecting</b>	Wait five seconds.	If connection fails, wand enters <b>Standby</b> .  If connection Succeeds, wand enters <b>Connected</b> .

# Setup Guide

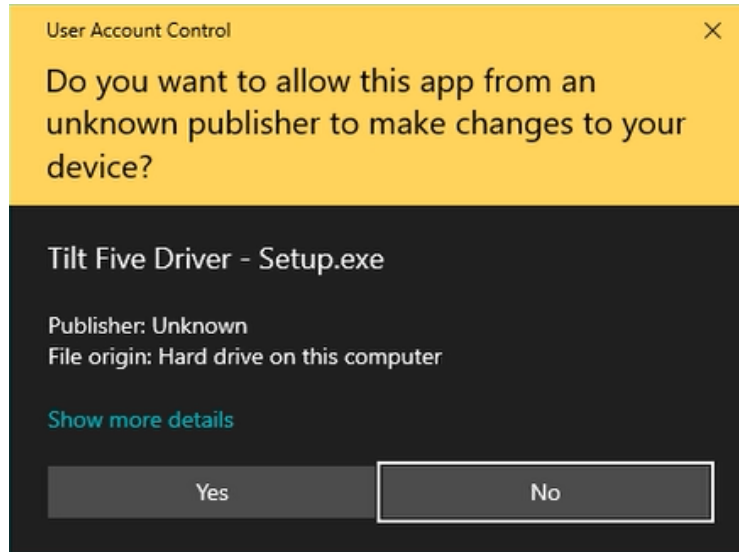
## 1. Setup your Tilt Five Glasses

- a. Connect your Glasses
  - i. Take your Tilt Five Glasses and USB-C cable out of the box
  - ii. Remove protective film from your Tilt Five Glasses
  - iii. Securely Insert USB-C cable into your Tilt Five Glasses
  - iv. Connect your USB-C cable or USB 3.0 Adapter to a SuperSpeed USB port on your Windows 10 PC. Ensure the port has the SuperSpeed symbol.



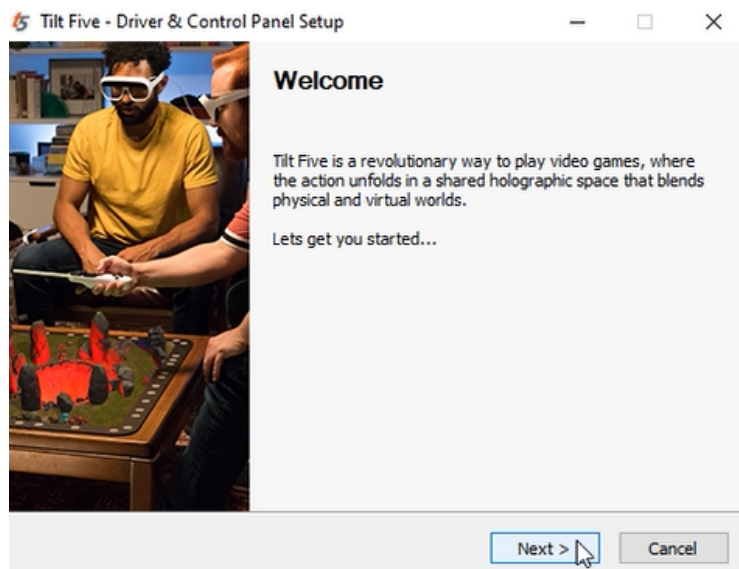
1.

- b. Install the required Tilt Five Drivers
  - i. Download the Tilt Five SDK package [HERE](#)
  - ii. Unzip Tilt Five SDK package
  - iii. Install Tilt Five Driver:
    1. TiltFive\_SDKRev12.1 > Setup > Windows > Tilt Five Driver - Setup
    2. Allow Tilt Five Driver - Setup.exe to make changes, Select 'Yes'



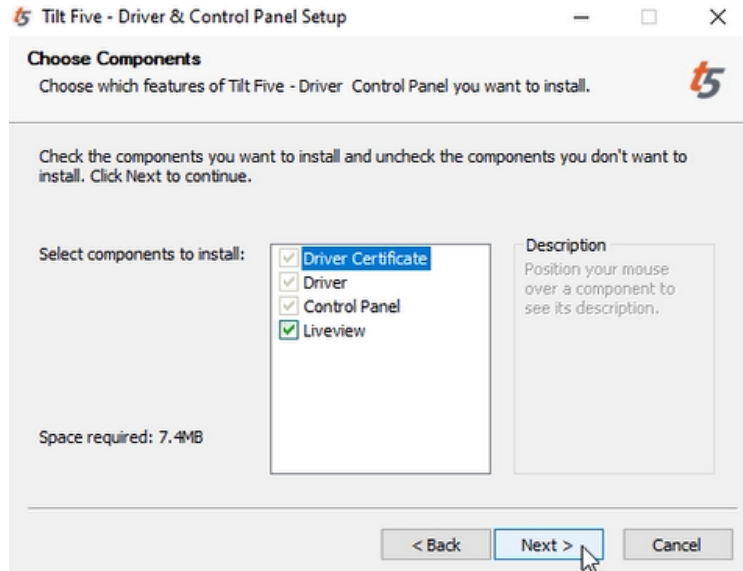
a.

3. Select 'Next' to go through Install wizard



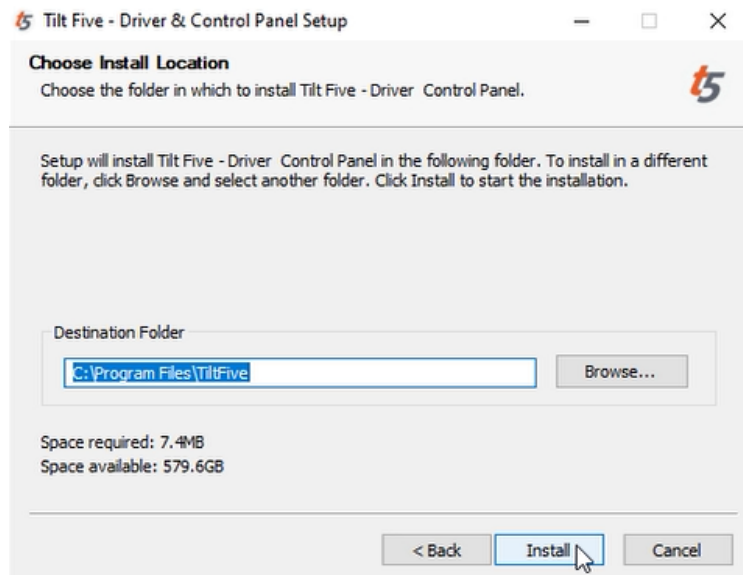
a.

4. Review the License Agreement terms and Select 'I Agree' to continue
5. All required components are selected by default, Select 'Next' to continue



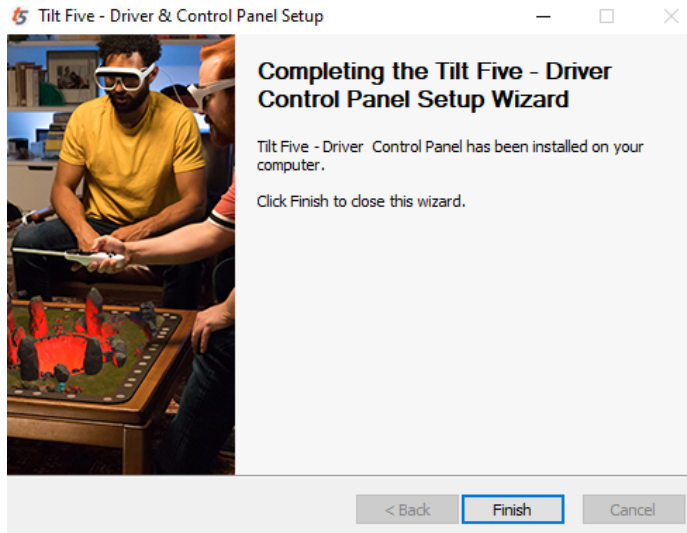
a.

6. Choose Install Location, and select 'Install'



a.

7. Your installation is complete! Select 'Finish'



8.

## 2. Setup your Tilt Five Wand

- a. Take your Tilt Five Wand out of the box
- b. Remove the protective film from your Wand
- c. Remove battery cover on back of Wand and insert 2 AA batteries, the Wand will start blinking red, indicating its trying to pair with your Tilt Five Glasses.
- d. In the SDK folder, navigate to upgrade-wand
  - i. Tilt Five SDK > Setup > Windows > upgrade-wand
  - ii. Select 'upgrade-wand'
  - iii. Press the SYS or center button (immediately below the 1&2 button)

```
C:\Windows\system32\cmd.exe

C:\Users\jobiw\Desktop\Tilt Five SDK\Setup\Windows\Wand-Pairing>bin\wand_pairing upgrade bin\peripheral-t5wand-07e70e6fab.bin
Checking connection to glasses...

If the wand you wish to upgrade is not yet paired with the glasses,
press the center button on top of the wand now.

Looking for 5.0 wands...
Could not find 5.0 wands. Looking for 6.0 wands...
Push the following buttons in the order seen below on the wand you wish to upgrade:

1 X Y Y 1 1

Looking for wands...
```

- iv.
- v. The Command Prompt will guide you to press a 6 button sequence on your Wand. You will feel a rumble in the Wand after each button is pressed.
- vi. The Command Prompt window will close automatically after successfully entering the sequence
- e. In the SDK folder, navigate to pair-wand
  - i. Tilt Five SDK > Setup > Windows > pair-wand
  - ii. The pair-wand tool will recognize your Wand and pair it automatically with your glasses.

- iii. The Command Prompt window will close automatically after successfully pairing and your Wand will blink green indicating that it is paired to your Glasses



## **Regulatory Information**

### **FCC Compliance Statement**

This device complies with Part 15 of the FCC Rules [and contains license-exempt transmitter(s)/receiver(s) that comply with Innovation, Science and Economic Development Canada's license-exempt RSS standard(s).

Operation is subject to the following two conditions:

1. This device may not cause harmful interference, and
2. This device must accept any interference received, including interference that may cause undesired operation of the device.

L'émetteur/récepteur exempt de licence contenu dans le présent appareil est conforme aux CNR d'Innovation, Sciences et Développement économique Canada applicables aux appareils radio exempts de licence.

L'exploitation est autorisée aux deux conditions suivantes:

1. l'appareil ne doit pas produire de brouillage, et
2. l'appareil doit accepter tout brouillage radioélectrique subi, même si le brouillage est susceptible d'en compromettre le fonctionnement.

Any changes or modifications not expressly approved by the party responsible for compliance could void the user's authority to operate the equipment.

This equipment has been tested and found to comply with the limits for a Class B digital device, pursuant to part 15 of the FCC Rules. These limits are designed to provide reasonable protection against harmful interference in a residential installation. This equipment generates, uses and can radiate radio frequency energy and, if not installed and used in accordance with the instructions, may cause harmful interference to radio communications. However, there is no guarantee that interference will not occur in a particular installation. If this equipment does cause harmful interference to radio or television reception, which can be determined by turning the equipment off and on, the user is encouraged to try to correct the interference by one or more of the following measures:

- Reorient or relocate the receiving antenna.
- Increase the separation between the equipment and receiver.
- Connect the equipment into an outlet on a circuit different from that to which the receiver is connected.
- Consult the dealer or an experienced radio/TV technician for help.

The device meets the exemption from the routine evaluation limits in section 2.5 of RSS 102 and compliance with RSS-102 RF exposure, users can obtain Canadian information on RF exposure and compliance.

Le dispositif rencontre l'exemption des limites courantes d'évaluation dans la section 2.5 de RSS 102 et la conformité à l'exposition de RSS-102 rf, utilisateurs peut obtenir l'information canadienne sur l'exposition et la conformité de rf.