

4790587088 2.4G WIFI 11B 6CH Front surface 5mm

Measurement Report for Device, FRONT, WLAN 2.4GHz, UID 10315 AAB, Channel 6 (2437.0MHz)

Device under Test Properties

Model, Manufacturer Device,	Dimensions [mm] 160.0 x 80.0 x 10.0	IMEI	DUT Type Phone
--------------------------------	--	------	-------------------

Exposure Conditions

Phantom Section, TSL	Position, Test Distance [mm]	Band	Group, UID	Frequency [MHz], Channel Number	Conversion Factor	TSL Conductivity [S/m]	TSL Permittivity
Flat, HSL	FRONT, 5.00	WLAN 2.4GHz	WLAN, 10315-AAB	2437.0, 6	8.18	1.86	40.2

Hardware Setup

Phantom	TSL, Measured Date	Probe, Calibration Date	DAE, Calibration Date
ELI V8.0 (20deg probe tilt) - 2178	HSL600-10000 Charge: xxxx, 2022-Dec-28	EX3DV4 - SN7733, 2022-08-02	DAE4 Sn1739, 2022-07-29

Scan Setup

	Area Scan	Zoom Scan
Grid Extents [mm]	120.0 x 200.0	30.0 x 30.0 x 30.0
Grid Steps [mm]	10.0 x 10.0	5.0 x 5.0 x 1.5
Sensor Surface [mm]	3.0	1.4
Graded Grid	Yes	Yes
Grading Ratio	1.5	1.5
MAIA	N/A	N/A
Surface Detection	VMS + 6p	VMS + 6p
Scan Method	Measured	Measured

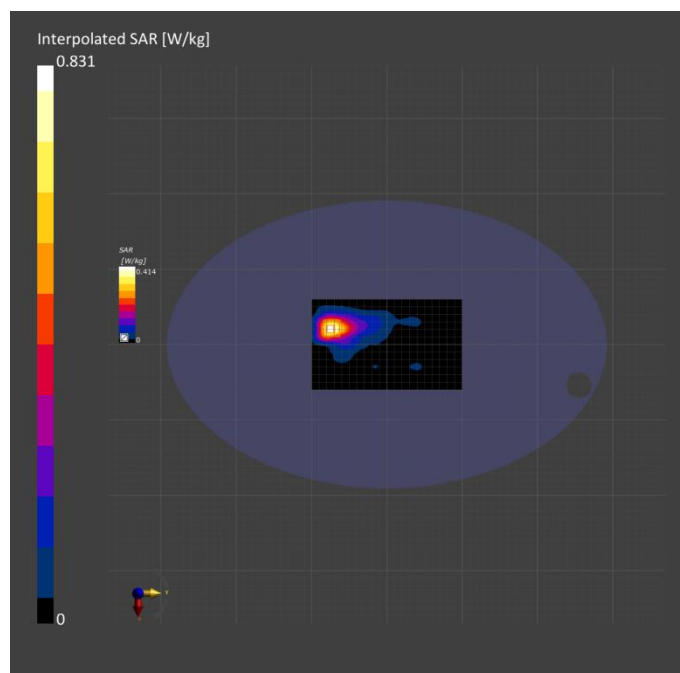
Measurement Results

	Area Scan	Zoom Scan
Date	2022-12-28, 13:51	2022-12-28, 14:00
psSAR1g [W/kg]	0.385	0.382
psSAR10g [W/kg]	0.192	0.187
Power Drift [dB]	-0.05	-0.03
Power Scaling	Disabled	Disabled
Scaling Factor [dB]		
TSL Correction	No correction	No correction
M2/M1 [%]		75.7
Dist 3dB Peak [mm]		12.0

Warning(s) / Error(s)

Details	Area Scan	Zoom Scan
---------	-----------	-----------

Warning(s)
Error(s)



4790587088 5.3G WIFI 11A 36CH Top Edge 5mm

Measurement Report for Device, EDGE TOP, WLAN 5GHz, UID 10317 AAD, Channel 36 (5180.0MHz)

Device under Test Properties

Model, Manufacturer Device,	Dimensions [mm] 160.0 x 80.0 x 10.0	IMEI	DUT Type Phone
--------------------------------	--	------	-------------------

Exposure Conditions

Phantom Section, TSL	Position, Test Distance [mm]	Band	Group, UID	Frequency [MHz], Channel Number	Conversion Factor	TSL Conductivity [S/m]	TSL Permittivity
Flat, HSL	EDGE TOP, 5.00	WLAN 5GHz	WLAN, 10317-AAD	5180.0, 36	5.92	4.52	35.3

Hardware Setup

Phantom	TSL, Measured Date	Probe, Calibration Date	DAE, Calibration Date
ELI V8.0 (20deg probe tilt) - 2178	HSL600-10000 Charge: xxxx, 2022-Dec-28	EX3DV4 - SN7733, 2022-08-02	DAE4 Sn1739, 2022-07-29

Scan Setup

	Area Scan	Zoom Scan
Grid Extents [mm]	40.0 x 120.0	22.0 x 22.0 x 22.0
Grid Steps [mm]	10.0 x 10.0	4.0 x 4.0 x 1.4
Sensor Surface [mm]	3.0	1.4
Graded Grid	Yes	Yes
Grading Ratio	1.5	1.4
MAIA	Y	N/A
Surface Detection	VMS + 6p	VMS + 6p
Scan Method	Measured	Measured

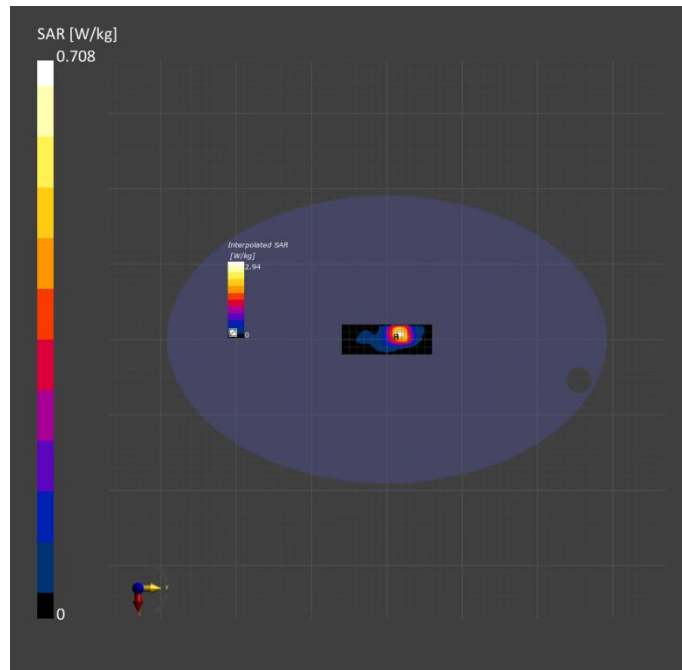
Measurement Results

	Area Scan	Zoom Scan
Date	2022-12-28, 08:57	2022-12-28, 09:06
psSAR1g [W/kg]	0.683	0.774
psSAR10g [W/kg]	0.247	0.248
Power Drift [dB]	-0.04	-0.11
Power Scaling	Disabled	Disabled
Scaling Factor [dB]		
TSL Correction	No correction	No correction
M2/M1 [%]		63.7
Dist 3dB Peak [mm]		7.9

Warning(s) / Error(s)

Details	Area Scan	Zoom Scan
---------	-----------	-----------

Warning(s)
Error(s)



4790587088 5.6G WIFI 11A 140CH Top Edge 5mm

Measurement Report for Device, EDGE TOP, WLAN 5GHz, UID 10317 AAD, Channel 140 (5700.0MHz)

Device under Test Properties

Model, Manufacturer Device,	Dimensions [mm] 160.0 x 80.0 x 10.0	IMEI	DUT Type Phone
--------------------------------	--	------	-------------------

Exposure Conditions

Phantom Section, TSL	Position, Test Distance [mm]	Band	Group, UID	Frequency [MHz], Channel Number	Conversion Factor	TSL Conductivity [S/m]	TSL Permittivity
Flat, HSL	EDGE TOP, 5.00	WLAN 5GHz	WLAN, 10317-AAD	5700.0, 140	5.08	5.30	35.9

Hardware Setup

Phantom	TSL, Measured Date	Probe, Calibration Date	DAE, Calibration Date
ELI V8.0 (20deg probe tilt) - 2178	HSL600-10000 Charge: xxxx, 2022-Dec-28	EX3DV4 - SN7733, 2022-08-02	DAE4 Sn1739, 2022-07-29

Scan Setup

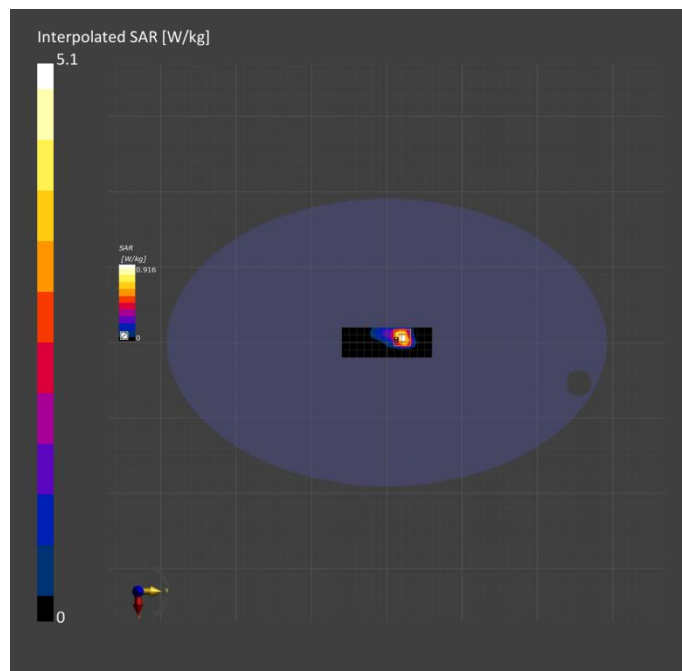
	Area Scan	Zoom Scan
Grid Extents [mm]	40.0 x 120.0	22.0 x 22.0 x 22.0
Grid Steps [mm]	10.0 x 10.0	4.0 x 4.0 x 1.4
Sensor Surface [mm]	3.0	1.4
Graded Grid	Yes	Yes
Grading Ratio	1.5	1.4
MAIA	Y	N/A
Surface Detection	VMS + 6p	VMS + 6p
Scan Method	Measured	Measured

Measurement Results

	Area Scan	Zoom Scan
Date	2022-12-29, 15:40	2022-12-29, 15:49
psSAR1g [W/kg]	0.980	1.15
psSAR10g [W/kg]	0.312	0.315
Power Drift [dB]	0.02	0.02
Power Scaling	Disabled	Disabled
Scaling Factor [dB]		
TSL Correction	No correction	No correction
M2/M1 [%]		59.7
Dist 3dB Peak [mm]		6.4

Warning(s) / Error(s)

Details	Area Scan	Zoom Scan
Warning(s)		
Error(s)		



4790587088 5.8G WIFI 11N40 151CH Top Edge 5mm

Measurement Report for Device, EDGE TOP, WLAN 5GHz, UID 10401 AAE, Channel 151 (5755.0MHz)

Device under Test Properties

Model, Manufacturer Device,	Dimensions [mm] 160.0 x 80.0 x 10.0	IMEI	DUT Type Phone
--------------------------------	--	------	-------------------

Exposure Conditions

Phantom Section, TSL Flat, HSL	Position, Test Distance [mm] EDGE TOP, 5.00	Band WLAN 5GHz	Group, UID WLAN, 10401-AAE	Frequency [MHz], Channel Number 5755.0, 151	Conversion Factor 5.15	TSL Conductivity [S/m] 5.05	TSL Permittivity 35.4
---	--	-------------------	-------------------------------------	--	---------------------------	-----------------------------------	--------------------------

Hardware Setup

Phantom ELI V8.0 (20deg probe tilt) - 2178	TSL, Measured Date HSL600-10000 Charge: xxxx, 2022-Dec-29	Probe, Calibration Date EX3DV4 - SN7733, 2022-08-02	DAE, Calibration Date DAE4 Sn1739, 2022-07-29
---	---	--	--

Scan Setup

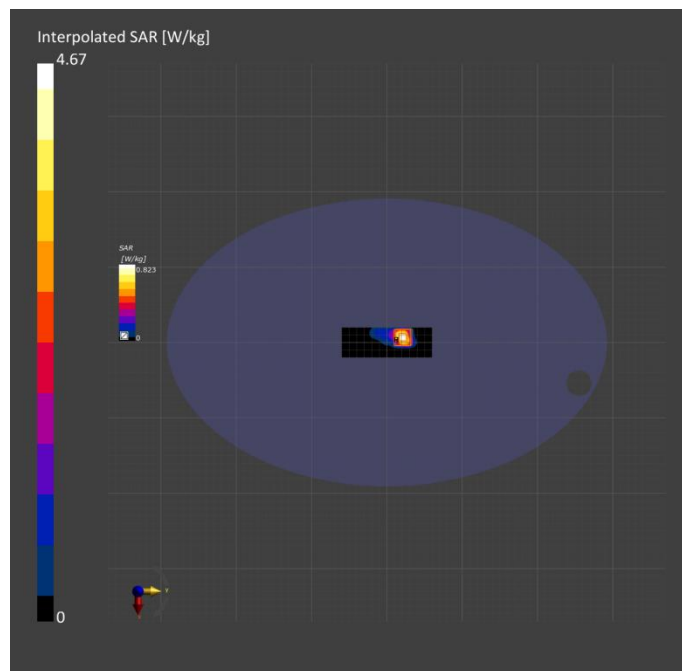
	Area Scan	Zoom Scan
Grid Extents [mm]	40.0 x 120.0	22.0 x 22.0 x 22.0
Grid Steps [mm]	10.0 x 10.0	4.0 x 4.0 x 1.4
Sensor Surface [mm]	3.0	1.4
Graded Grid	Yes	Yes
Grading Ratio	1.5	1.4
MAIA	Y	N/A
Surface Detection	VMS + 6p	VMS + 6p
Scan Method	Measured	Measured

Measurement Results

	Area Scan	Zoom Scan
Date	2022-12-30, 16:47	2022-12-30, 16:56
psSAR1g [W/kg]	0.896	1.05
psSAR10g [W/kg]	0.282	0.279
Power Drift [dB]	0.00	-0.02
Power Scaling	Disabled	Disabled
Scaling Factor [dB]		
TSL Correction	No correction	No correction
M2/M1 [%]		59.7
Dist 3dB Peak [mm]		6.4

Warning(s) / Error(s)

Details	Area Scan	Zoom Scan
Warning(s)		
Error(s)		



4790587088 BT DH5 39CH Front Surface 5mm

Measurement Report for Device, FRONT, ISM 2.4 GHz Band, UID 10670 AAA, Channel 39 (2441.0MHz)

Device under Test Properties

Model, Manufacturer Device,	Dimensions [mm] 160.0 x 80.0 x 10.0	IMEI	DUT Type Phone
--------------------------------	--	------	-------------------

Exposure Conditions

Phantom Section, TSL	Position, Test Distance [mm]	Band	Group, UID	Frequency [MHz], Channel Number	Conversion Factor	TSL Conductivity [S/m]	TSL Permittivity
Flat, HSL	FRONT, 5.00	ISM 2.4 GHz Band	Bluetooth, 10670-AAA	2441.0, 39	8.18	1.87	40.3

Hardware Setup

Phantom	TSL, Measured Date	Probe, Calibration Date	DAE, Calibration Date
ELI V8.0 (20deg probe tilt) - 2178	HSL600-10000 Charge: xxxx, 2022-Dec-30	EX3DV4 - SN7733, 2022-08-02	DAE4 Sn1739, 2022-07-29

Scan Setup

	Area Scan	Zoom Scan
Grid Extents [mm]	120.0 x 200.0	30.0 x 30.0 x 30.0
Grid Steps [mm]	10.0 x 10.0	5.0 x 5.0 x 1.5
Sensor Surface [mm]	3.0	1.4
Graded Grid	Yes	Yes
Grading Ratio	1.5	1.5
MAIA	Y	Y
Surface Detection	VMS + 6p	VMS + 6p
Scan Method	Measured	Measured

Measurement Results

	Area Scan	Zoom Scan
Date	2022-12-28, 16:01	2022-12-28, 16:10
psSAR1g [W/kg]	0.079	0.076
psSAR10g [W/kg]	0.040	0.036
Power Drift [dB]	-0.16	-0.00
Power Scaling	Disabled	Disabled
Scaling Factor [dB]		
TSL Correction	No correction	No correction
M2/M1 [%]		75.1
Dist 3dB Peak [mm]		10.6

Warning(s) / Error(s)

Details	Area Scan	Zoom Scan
Warning(s)		
Error(s)		

