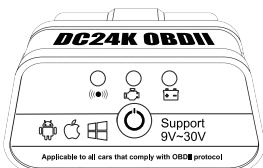


DC24K OBDII

User Manual

BLUETOOTH CAR OBD2 SCANNER



SUITABLE FOR ALL VEHICLE MAKES



USA
≥1996



Canada
≥ 1998



Japan
≥ 2002



China
≥2008



Europe
≥1996 (petrol)
≥2003 (diesel)



Australia
≥2006



Mexico
≥2007



Brazil
≥2010 (petrol)

This list is not complete and may vary; cars from other countries are also supported, mostly from 2004 model year onwards.

Compatibility depends on the specific model, and for some cars support is available from earlier model years.

SIMPLY CONNECT YOUR DEVICE AND GET

DIAGNOSTICS

Diagnose your car with tap-notch precision

ERROR RESET

Decode and reset error codes with a single touch

GENERAL STATUS

Find out your car's condition before a long trip

CODING

On / off hidden functions in certain cars

STATISTICS

Display sensor readings in real time

CUES

View cues about causes and remedies for problems

SUPPORTED OBD - II PROTOCOLS:

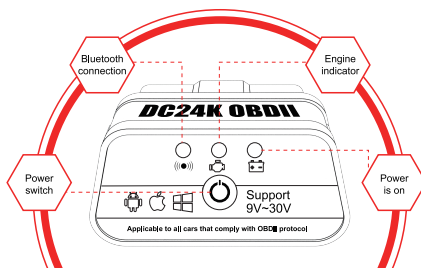
1. SAE J1850 PWM (41.6 Kbaud)
2. SAE J1850 VPW (10.4 Kbaud)
3. ISO9141 - 2 (5 baud, 10.4 baud)
4. ISO14230 - 4 KWP (5 baud, 10.4 baud)
5. ISO14230 - 4 KWP (fast init, 10.4 Kbaud)
6. ISO15765 - 4 CAN (11 - bit ID, 500 Kbaud)
7. ISO15765 - 4 CAN (29 - bit ID, 500 Kbaud)
8. ISO15765 - 4 CAN (11 - bit ID, 250 Kbaud)
9. ISO15765 - 4 CAN (29 - bit ID, 250 Kbaud)
10. SAE J1939 CAN (29 - bit ID, 250 * Kbaud)
11. USER1 CAN (11 * bit ID, 125 * Kbaud)
12. USER2 CAN (11 * bit ID, 50 * Kbaud)

SPECIFICATION PARAMETERS:

- Supply Voltage: 9V-30V
- Standby Current: 0.008mA
- Product Dimensions: 2.4x4.6x2.7cm
- Operating Current: 10mA
- Operating Temperature: -40℃-85℃
- Net Weight of Product: 16.2g

ONE-TOUCH SHUTDOWN, NO BATTERY CONSUMPTION

3 color indicator lights make your detection process clearer



EASY TO CONNECT

iOS

Install **Car Scanner** from Apple Store.

Step1. Enable Bluetooth under [Setting]

(1). You don't need to setup pairing with adapter.

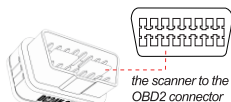
Step2. Launch the Car Scanner and go to Settings

(2). Tap [Adapter OBDII ELM327]. Select [Connection Type:] Bluetooth 4.0 (LE)

(3). Click [Select device]

(4). Wait until OBDLE is detected and click on

(5). Final step, click on the [CONNECT] button



the power button on the scanner

EASY TO CONNECT

Android

Install APP **Car Scanner** Lite from Google Play.

Step1. Enable Bluetooth under [Setting],

(1). pairing device OBDII with PIN code 1234

Step2. Launch the Car Scanner and go to Settings

(2). Tap [Adapter OBDII ELM327]. Select [Connection Type:] Bluetooth 4.0 (LE)

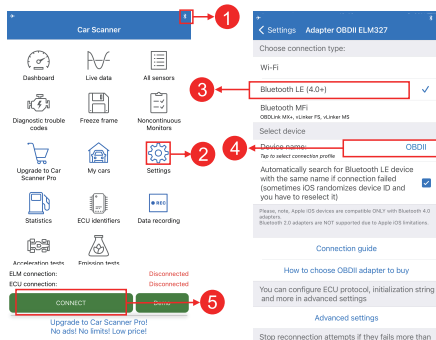
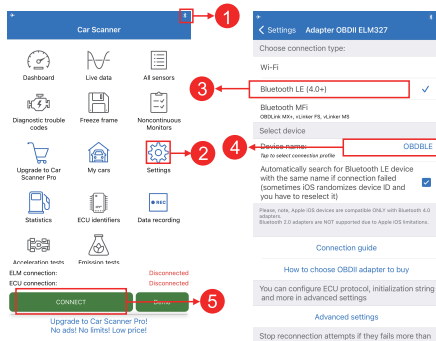
(3). Click [Select device]

(4). Wait until OBDII is detected and click on

(5). Final step, click on the [CONNECT] button



the power button on the scanner



FCC Warning:

This equipment has been tested and found to comply with the limits for a Class B digital device, pursuant to part 15 of the FCC Rules. These limits are designed to provide reasonable protection against harmful interference in a residential installation. This equipment generates, uses and can radiate radio frequency energy and, if not installed and used in accordance with the instructions, may cause harmful interference to radio communications. However, there is no guarantee that interference will not occur in a particular installation. If this equipment does cause harmful interference to radio or television reception, which can be determined by turning the equipment off and on, the user is encouraged to try to correct the interference by one or more of the following measures:

- Reorient or relocate the receiving antenna.
- Increase the separation between the equipment and receiver.
- Connect the equipment into an outlet on a circuit different from that to which the receiver is connected.
- Consult the dealer or an experienced radio/TV technician for help.

Caution: Any changes or modifications to this device not explicitly approved by manufacturer could void your authority to operate this equipment.

This device complies with part 15 of the FCC Rules. Operation is subject to the following two conditions:

(1) This device may not cause harmful interference, and (2) this device must accept any interference received, including interference that may cause undesired operation.

This equipment complies with FCC radiation exposure limits set forth for an uncontrolled environment. This equipment should be installed and operated with minimum distance 20cm between the radiator and your body.