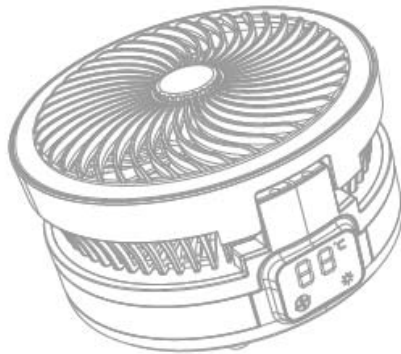
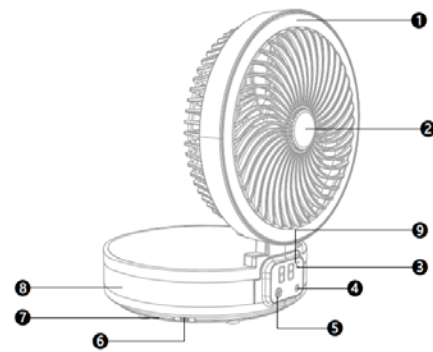


# F06

## Product Instructions

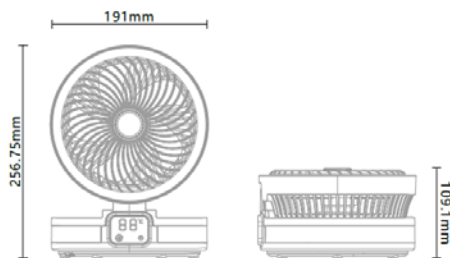


## Features

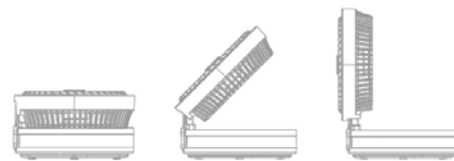


- 1 Removable Protective Net
- 2 Removable Aromatherapy Cover
- 3 Temperature Display
- 4 Night Light Mode Adjustment
- 5 Turn On Or Off / Speed Gear Adjustment / Cycle Mode
- 6 USB Charging Port
- 7 Suspended Base
- 8 Night Light
- 9 Charging Indicator

## Exterior Size



## Steps For Usage



- Open the box and take out the circulating fan from the box.
- Connect the circulating fan to a USB charger for charging. The red indicator light is always on when charging, and the indicator light turns green when fully charged.
- Manually adjust the flip circulation fan to a proper angle (Adjustable to 90°).

## Basic Configuration

Product Model F06 Circular Fan	Charging Input 5V/1A	Power Consumption 5W
Gear 4 Speed Gear	Usage Time 3~12h	Battery Specifications 6000mAh
Charging Time 6~8h	Product Weight 670g	Control Method Touch Control
Display Function Gear/Room Temperature	Decibel Value 40~50dB	Executive Standard GB4706.1-2005 GB4706.27-2008 GB/T5262-2018

## Operating Description

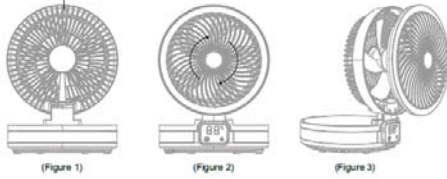


The touch button operation is as follows:

- Long press (Figure 1) with your finger position to turn on/off the fan mode, click again to adjust the fan 1/2/3/4 gear (click and touch frequency interval 0.5 seconds), double click to turn on/off the fan rotation cycle mode (5 seconds after power on The real-time temperature is displayed by default without using the touch button)
- Long press (Figure 2) finger position to turn on/off night light mode, click again (Figure 2) finger position to adjust light brightness (click and touch frequency interval 0.5 seconds), double click (Figure 2) finger position to adjust light mode (L1/L2) /L3/L4), there are four lighting modes: cool white/warm white/warm white/breathing light

## Protective Net Removal

### Screw Part



- Turn the fan to 90° and unscrew the screws on the back of (Figure 1).
- Then turn the protective net (Figure 2) clockwise to a buckle position.
- Finally, the protective net can be disassembled and cleaned with water.

## Aromatherapy Cover Disassemble



- Rotate the aromatherapy cover counterclockwise to remove the aromatherapy cover (the product does not contain aromatherapy)

## Warranty Card

Username \_\_\_\_\_ Purchase Date \_\_\_\_\_  
 Contact Number \_\_\_\_\_ Installation Address \_\_\_\_\_  
 Product Name \_\_\_\_\_  
 Dealer (Signature): \_\_\_\_\_

This product has been strictly inspected before leaving the factory to ensure that its quality meets various standards.

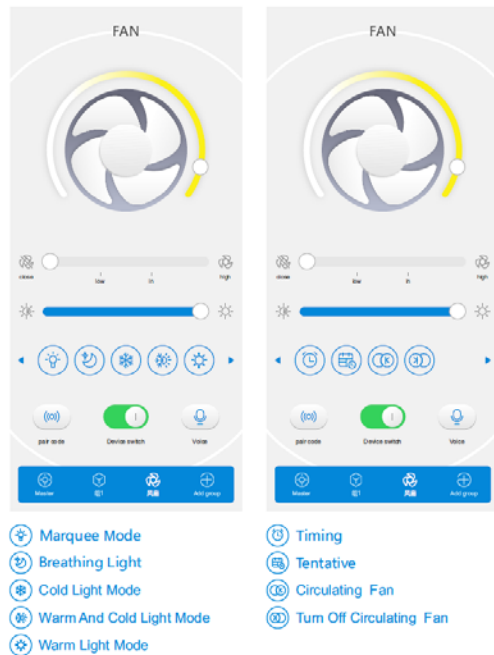
### Maintenance Records:

Repair Date	Maintenance Project	Maintenance Organization	Repairer's Signature

- Note: (1) Please keep this card properly, and contact the after-sales service center with the warranty card and purchase invoice when repairs are needed.  
 (2) The company guarantees 1 year for the F06 circulating fan purchased by the user, and the repair content includes: fan, control panel, etc. (except for filter consumables, normal fan cleaning and maintenance in the later period)  
 (3) The company's warranty card is only for use in China (excluding Hong Kong, Macao, and Taiwan);  
 (4) The warranty card shall not be altered or forged.

1. Android, Apple scan code to download and install APP.
2. Turn on the fan, turn on the phone's Bluetooth fan to automatically connect with the phone.
3. Open the APP to enter the operation page.

The operation instructions are as follows:



### Warning:

Changes or modifications to this unit not expressly approved by the party responsible for compliance could void the user's authority to operate the equipment. NOTE: This device complies with part 15 of the FCC Rules. Operation is subject to the following two conditions: (1) This device may not cause harmful interference, and (2) this device must accept any interference received, including interference that may cause undesired operation.

### FCC Statement:

This equipment has been tested and found to comply with the limits for a Class B digital device, pursuant to part 15 of the FCC Rules. These limits are designed to provide reasonable protection against harmful interference in a residential installation. This equipment generates, uses and can radiate radio frequency energy and, if not installed and used in accordance with the instructions, may cause harmful interference to radio communications. However, there is no guarantee that interference will not occur in a particular installation. If this equipment does cause harmful interference to radio or television reception, which can be determined by turning the equipment off and on, the user is encouraged to try to correct the interference by one or more of the following measures:

- Reorient or relocate the receiving antenna.
- Increase the separation between the equipment and receiver.
- Connect the equipment into an outlet on a circuit different from that to which the receiver is connected.
- Consult the dealer or an experienced radio/TV technician for help.