

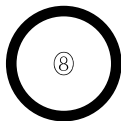
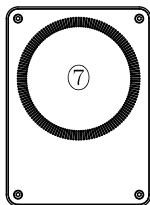
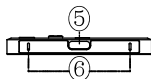
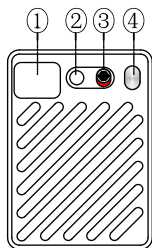
OCXU Note

Real-time translation | Recoder | Transcribe | Summarize

Welcome to use OCXU Note



**Please scan the QR code to download the
Ailith App for activation when using it for the first time.**

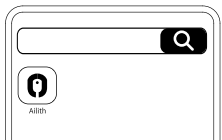


- ① Screen
- ② Recording button
- ③ Mode switch button
- ④ Real-time translation button
- ⑤ Charging port
- ⑥ Sound pickup hole
- ⑦ Magnetic zone
- ⑧ Magnetic ring

Quick Guide

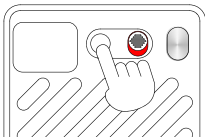
1.App Download

- ▶ Search for Ailith in the App Store or Google Play and download it.
- ▶ Create your Ailith account.



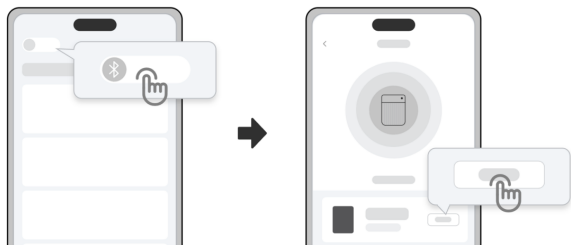
2.Power On

- ▶ Press and hold the record button for 3 seconds to turn on the device.



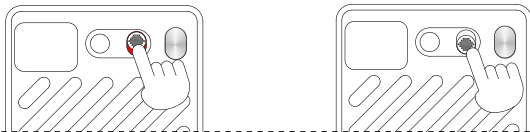
3.App Binding

- Open the Ailith App and follow the on-screen instructions to complete the binding process.



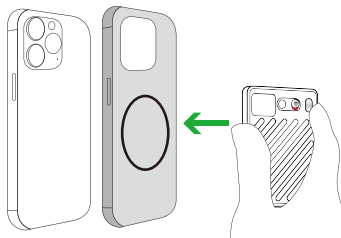
4.Recording Mode

- Slide the mode switch upwards for call mode and downwards for note mode.



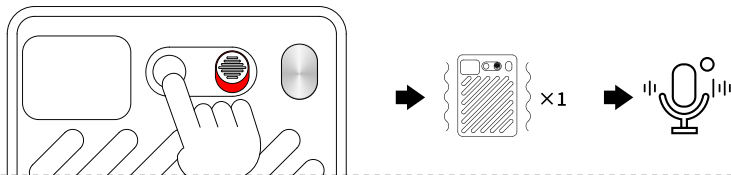
Note:

When using for the first time, please charge and bind the App before recording.
When recording a phone call, make sure your recording device is in call mode and attach the recording device to the back of the phone through the magnetic ring.



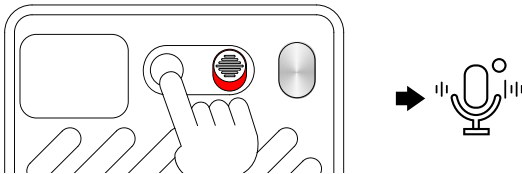
5. Recording

- After turning on the device, click the record button to start recording. The device will vibrate once and start recording.



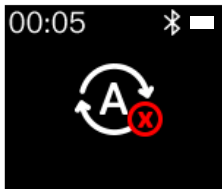
6. Pause/resume Recording

- ▶ During recording, double-clicking the recording button will pause the recording. After pausing, double-clicking the recording button again will resume recording.



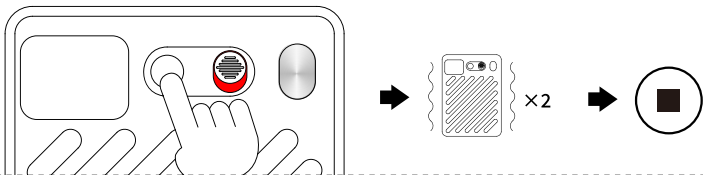
Note:

The real-time translation function is not supported during recording. When you click the real-time translation button during recording, the following page will be displayed on the screen as a prompt.



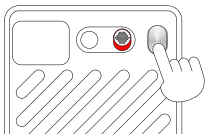
7.End Recording

- ▶ If you click the record button during recording, the device will vibrate twice and end recording.



8.Real-time Translation

- ▶ When the recording device is connected to the App, long press the real-time translation button to record the content to be translated. After completing the recording, release the real-time translation button and the recording will be translated into the set language on the App and broadcast from the App device in the form of voice. (You can set whether to broadcast translated voice on the app)



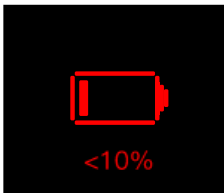
Note:

During real-time translation, the content to be translated is recorded through the device where the App is located. Please place the device where the App is located close to the voice source.

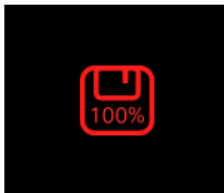
Real-time translation requires staying connected to the App, otherwise the recording device screen will prompt you to connect to the App as shown below.



9.Screen Tips



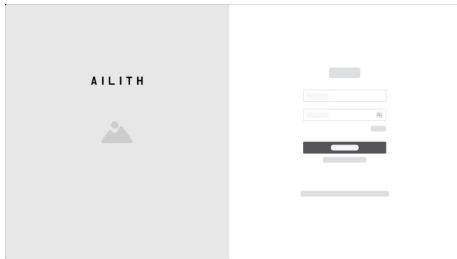
Low battery warning



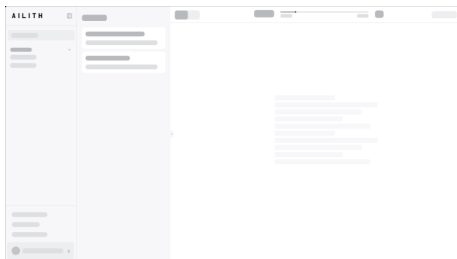
Memory full prompt

10. Ailith Web

- Enter on the browser side " <https://wincloudaitech.com/> " Open the webpage.



- Enter your email account and password to log in, and you can view and transcribe audio files on your computer.



11.Parameter Information

Model: Revoic R1

Wireless Version: V5.4

Display Module: 0.6 inch

Battery: 800mAh

Input: 5V/0.7A



MADE IN CHINA



FR

**ÉLÉMENTS D'EMBALLAGE
À SÉPARER ET À DÉPOSER
DANS LE BAC DE TRI**



FR

**Cet appareil,
ses accessoires,
cordons et batteries
se recyclent**

**À DÉPOSER
EN MAGASIN**



**À DÉPOSER
EN DÉCHÈTERIE**

OU



Points de collecte sur www.quefairedemesdechets.fr
Privilégiez la réparation ou le don de votre appareil !

FCC STATEMENT :

This device complies with Part 15 of the FCC Rules. Operation is subject to the following two conditions:

- (1) This device may not cause harmful interference, and
- (2) This device must accept any interference received, including interference that may cause undesired operation.

Warning: Changes or modifications not expressly approved by the party responsible for compliance could void the user's authority to operate the equipment.

NOTE: This equipment has been tested and found to comply with the limits for a Class B digital device, pursuant to Part 15 of the FCC Rules.

These limits are designed to provide reasonable protection against harmful interference in a residential installation. This equipment generates uses and can radiate radio frequency energy and, if not installed and used in accordance with the instructions, may cause harmful interference to radio communications. However, there is no guarantee that interference will not occur in a particular installation. If this equipment does cause harmful interference to radio or television reception, which can be determined by turning the equipment off and on, the user is encouraged to try to correct the interference by one or more of the following measures:

Reorient or relocate the receiving antenna.

Increase the separation between the equipment and receiver.

Connect the equipment into an outlet on a circuit different from that to which the receiver is connected.

Consult the dealer or an experienced radio/TV technician for help.

RF warning statement:

The device has been evaluated to meet general RF exposure requirement. The device can be used in portable exposure condition without restriction.

IC warning:

- English:

This device contains licence-exempt transmitter(s)/receiver(s) that comply with Innovation, Science and Economic Development Canada's licence-exempt RSS(s).

Operation is subject to the following two conditions:

- (1) This device may not cause interference.
- (2) This device must accept any interference, including interference that may cause undesired operation of the device.

- French:

L'émetteur/récepteur exempt de licence contenu dans le présent appareil est conforme aux CNR d'Innovation, Sciences et Développement économique Canada applicables aux appareils radio exempts de licence. L'exploitation est autorisée aux deux conditions suivantes :

- 1) L'appareil ne doit pas produire de brouillage;
- 2) L'appareil doit accepter tout brouillage radioélectrique subi, même si le brouillage est susceptible d'en compromettre le fonctionnement.

The device has been evaluated to meet general RF exposure requirement. The device can be used in portable exposure condition without restriction.

the power delivered by the charger must be between min 0.5 Watts required by the radio equiprient, and max 3.85 watts in order to achieve the maximum charging speed.

