



X4 4*6 Thermal Printer Use Manual

FCC Caution:



Note: This equipment has been tested and found to comply with the limits for a Class B digital device, pursuant to part 15 of the FCC Rules. These limits are designed to provide reasonable protection against harmful interference in a residential installation.

This equipment generates, uses and can radiate radio frequency energy and, if not installed and used in accordance with the instructions, may cause harmful interference to radio communications.

However, there is no guarantee that interference will not occur in a particular installation if this equipment does cause harmful interference to radio or television reception, which can be determined by turning the equipment off and on, the user is encouraged to try to correct the interference by one or more of the following measures:

- Reorient or relocate the receiving antenna.
- Increase the separation between the equipment and receiver.
- Connect the equipment into an outlet on a circuit different from that to which the receiver is connected.
- Consult the dealer or an experienced radio/TV technician for help. Important: Change or modifications not expressly approved by the manufacturer responsible for compliance could void the user's authority to operate the equipment.

This device complies with Part 15 of the FCC Rules. Operation is subject to the following two conditions: (1) this device may not cause harmful interference, and (2) this device must accept any interference received including interference that may cause undesired operation

FCC Radiation Exposure Statement:

This equipment complies with FCC radiation exposure limits set forth for an uncontrolled environment. This equipment should be installed and operated with minimum distance 20 cm between the radiator & your body.

Made in China

Mobile phone operation guide

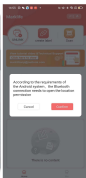
1. Scan the QR Code to download the APP.



2.APP connection: Open APP and click "UNLINK" in the upper left corner Find printer model and use the printer according to the instruction



Do Not Pair Bluetooth From Setting!



Click "UNLINK" to search for X4 Printer.

Note:
1. Turn on phone Bluetooth;
2. Open APP click "UNLINK" find printer.

3.Create label

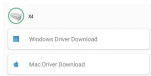
1) Two types of label style are available : continuous Label & gap label

2) Choose the correct size that you want

NOTE: Please set the correct width and height, otherwise it will not print



PC driver download

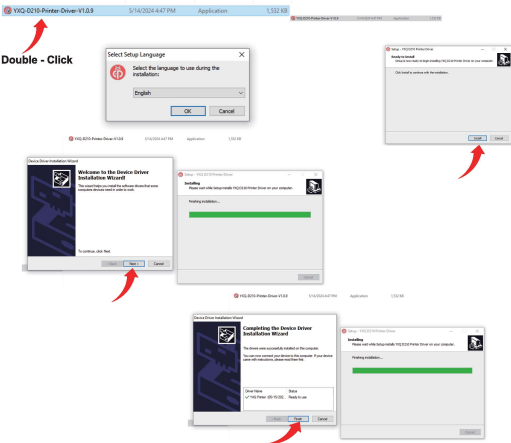


Copy the driver of the corresponding computer system from the QR code above or the APP to the website for download.

Windows - Printer driver installation

1.Download Driver: <https://marklife.cc/X4.exe>

Note: Before installing the driver, turn off your computer antivirus software.the printer needs to be connected to the power supply and computer, and the power on state.



Mac- Printer driver installation

1.Download Driver: <https://marklife.cc/X4.pkg>
<https://marklife.cc/X4.dmg>

Note: Before installing the driver, turn off your computer antivirus software.the printer needs to be connected to the power supply and computer, and the power on state.



Marklife-X4_Printer
 Driver_Mac_V1.0.0
 Signed(1).pkg

