



# Integrated machine

User guide

# catalogue

I . Instructions for use.....	4
1 Introduction.....	4
2. Main features.....	4
3. Scope of application.....	4
4. Configuration list.....	4
5. Safety instructions.....	4
II. Overview of Integrated machine components.....	5
1. When connecting to a computer, please pay attention to the following information.....	5
2. Audio input and output.....	7
3. Side interface and buttons.....	7
III, operating instructions.....	9
IV, troubleshooting and solutions.....	10
1. There is no response to HDMI access (medical split computer).....	10
2. The machine runs with a blue screen or a blue screen when it is turned on, or there is no display problem when it is turned on.....	10
3. Hard disk problem.....	11
4. Automatically restart or keep restarting after booting.....	11
5. wifi problem.....	11
6. Bluetooth problem.....	12
7. There is no sound or no sound from the HDMI of the machine interface.....	12

8. The CPU fan is noisy.....	12
9. Two lines of English words appear in the system when booting up.....	12
10. After entering the system, the screen cannot be full screen or displayed incompletely.....	12
11. USB power supply problem.....	12
12. Adapter problem.....	13
V , special tips.....	13

# **I . Instructions for use**

## **1 Introduction**

respected user:

Thank you for choosing our products. With our products, you can enjoy to the efficient office experience brought by digital technology, we will work hard to provide you with faster, More satisfactory service.

Please read the product manual carefully before using this product.

We determined that the product U-NII frequency band remains at 5150-5250MHz/5745-5825MHz for any period of time. Main features

A digital technology product integrating medical integrated computer and mobile power system.

## **3. Scope of application**

Suitable for mobile rounds, smart medical equipment, mobile workstations, medical care vehicles, medical information carts, settlement vehicles, wireless nursing vehicles, medical trolleys, and scene-based mobile office equipment.

## **4. Configuration list**

Integrated machine	*1 set
power cable	*1/Article
Adapter (charger)	*1/pc
Wireless keyboard and mouse (user optional)	*1/set
Vertical wall-mounted (user optional)	*1/set
Warranty Card	*1 piece
user's manual	*1/book

## **5. Safety instructions**

- (1) Do not place the Integrated machine in an unstable and easy-to-fall place.
- (2) Do not use the Integrated machine in an environment of extreme temperature and humidity.
- (3) Avoid using the Integrated machine directly exposed to sunlight and other heat sources.
- (4) The Integrated machine cannot be used in any liquid.

(5) Do not put anything into the Integrated machine, and do not put water containers on the Integrated machine.

(6) In thunderstorm weather (especially when there is lightning), please unplug the power plug and antenna plug to cut off the power, power source, try to shut down.

(7) Do not step on the power cord, and do not twist the power cord together.

(8) Do not overload the external connection socket on the wall to avoid fire or electric shock.

(9) Use a dry, soft cloth (without volatile substances) to wipe the machine.

(10) If your Integrated machine computer is broken, you cannot disassemble and repair it yourself. Must be taken with professional maintenance personnel get in touch.

(11) If you do not use the device for a long time, please store it in a dry place.

(12) When installing this equipment for exhibition use, please do not directly place it on the floor or carpet to avoid danger.

(13) Please make sure that the Integrated machine is installed in a suitable position, such as installed on a wall, suspended hang on a mobile cart, please install it under the guidance of a professional. (Use or display do not directly put the Integrated machine on its back or stand on the floor when viewing)

(14) If you do not use the device for a long time, please unplug the power plug.

## **II. Overview of Integrated machine components**

Connect to the computer

### ***1. When connecting to a computer, please pay attention to the following information***

Find the small icon of the interface on the back of the computer to match the interface with the icon. If your computer is connected to the interface panel All ports are marked with color, please match the connection connector and port according to the color.

Note: Depending on the specific model type, your computer may not have some of the interfaces mentioned in this part of the description.

(1) Power connection



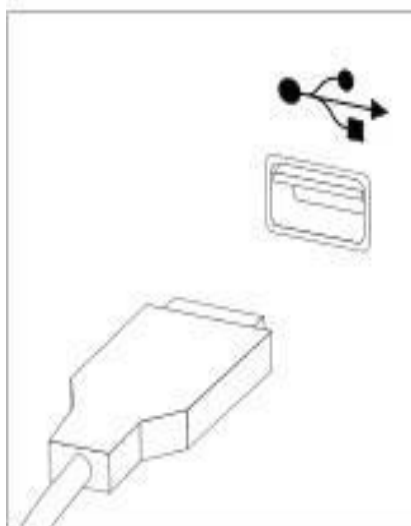
Connect the power cord to the corresponding port on the back of the computer.

Connect the power cord to a properly grounded power outlet.

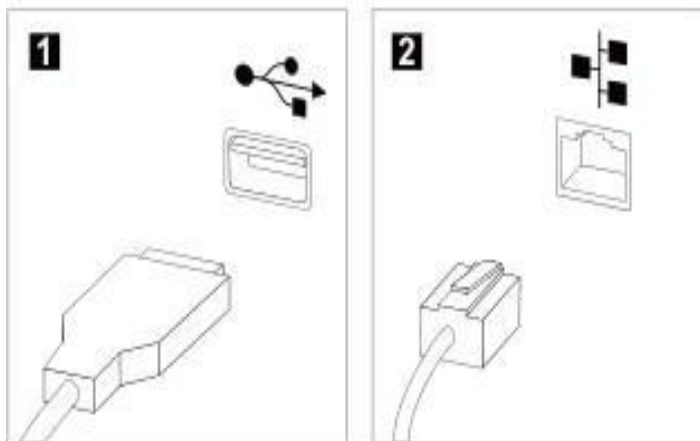
Note: Before connecting the computer equipment, be sure to check the local voltage and current output to ensure that the

The voltage and current values match.

(2) Connect the keyboard and mouse cable to the corresponding USB interface



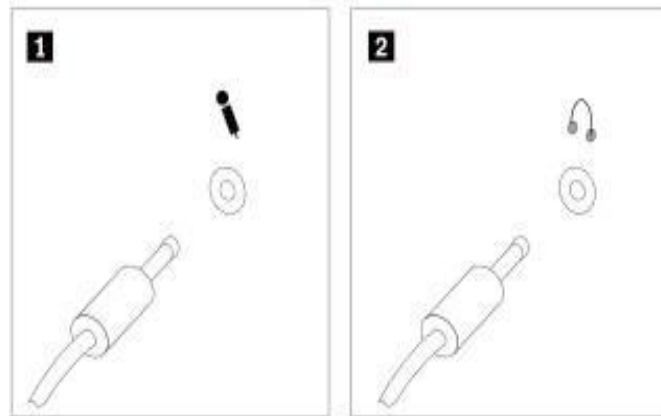
If you have an audio device, use the following instructions to connect



## 2. Audio input and output

(1) Microphone When you want to record or use voice recognition software, please use this interface to connect the microphone to the brain.

(2) Earphones When you want to listen to music or other sounds without disturbing other people, please use this interface to connect your child's machine connected to the computer.

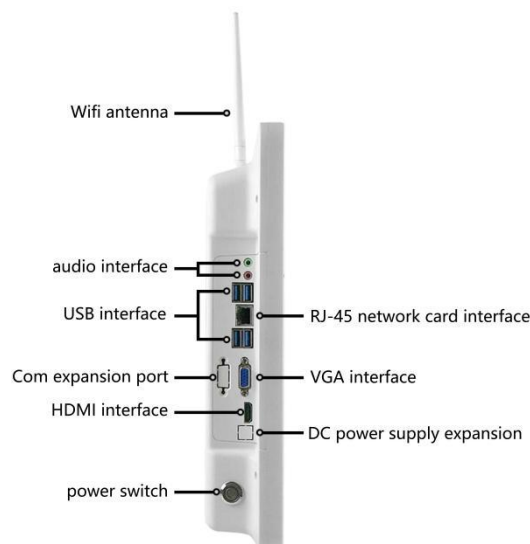


(4) Choose the correct AC power switch setting, do not try to plug the 110V power cord into the 220V power supply. Do not change the voltage selection switch of the power supply of the machine. Any changes may cause personal injury or The equipment is damaged.

(5) Please place your computer vertically to avoid accidental damage.

(6) To ensure your personal safety, please connect the computer to a grounded power outlet.

## 3. Side interface and buttons



VGA (video transmission standard):

VGA originally referred to the display mode of monitor 640X480. The full English name of VGA is Video Graphic Array, also called display drawing array. VGA supports simultaneous

display of 16 colors at a higher resolution of 640X480 Color or 256 kinds of gray scale , and 256 kinds of colors can be displayed at the same time under 320X240 resolution.

HDMI (High Definition Multimedia Interface):

It is designed to replace older analog signal video and audio transmission interfaces such as [SCART](#) or [RCA](#) terminals.

COM port (serial communication port):

Referred to as serial port. The serial port on the computer is usually 9-pin, but also has a 25-pin interface, with a maximum rate of 115200bps. Usually used to connect a mouse (serial port) and communication equipment (such as connecting an external modem for [data communication](#) Or some factory's CNC machine interface) and so on. Generally, there is only one serial port on the outside of the motherboard, and the back of the chassis has one parallel port, The nine-hole output terminal (trapezoid), that comes up is the COM1 port, and the COM2 port is generally led out from the pins on the motherboard. The parallel port is the longest trapezoidal port.

USB interface ( Universal Serial Bus ):

The common ones are IDE interface hard disk, serial port mouse and keyboard, parallel port printer [scanner](#) , but there are after USB, these application peripherals can all be connected to the personal computer using the same standard, then there will be USB hard disk, USB mouse, USB printer, etc.

Cable interface:

The network cable interface refers to the interface between the [network card](#) and the [network](#) . The common network card interface is RJ-45, used for twisted pair connection. RJ-45 is commonly known as "crystal head", which belongs to the twisted pair Ethernet interface type.

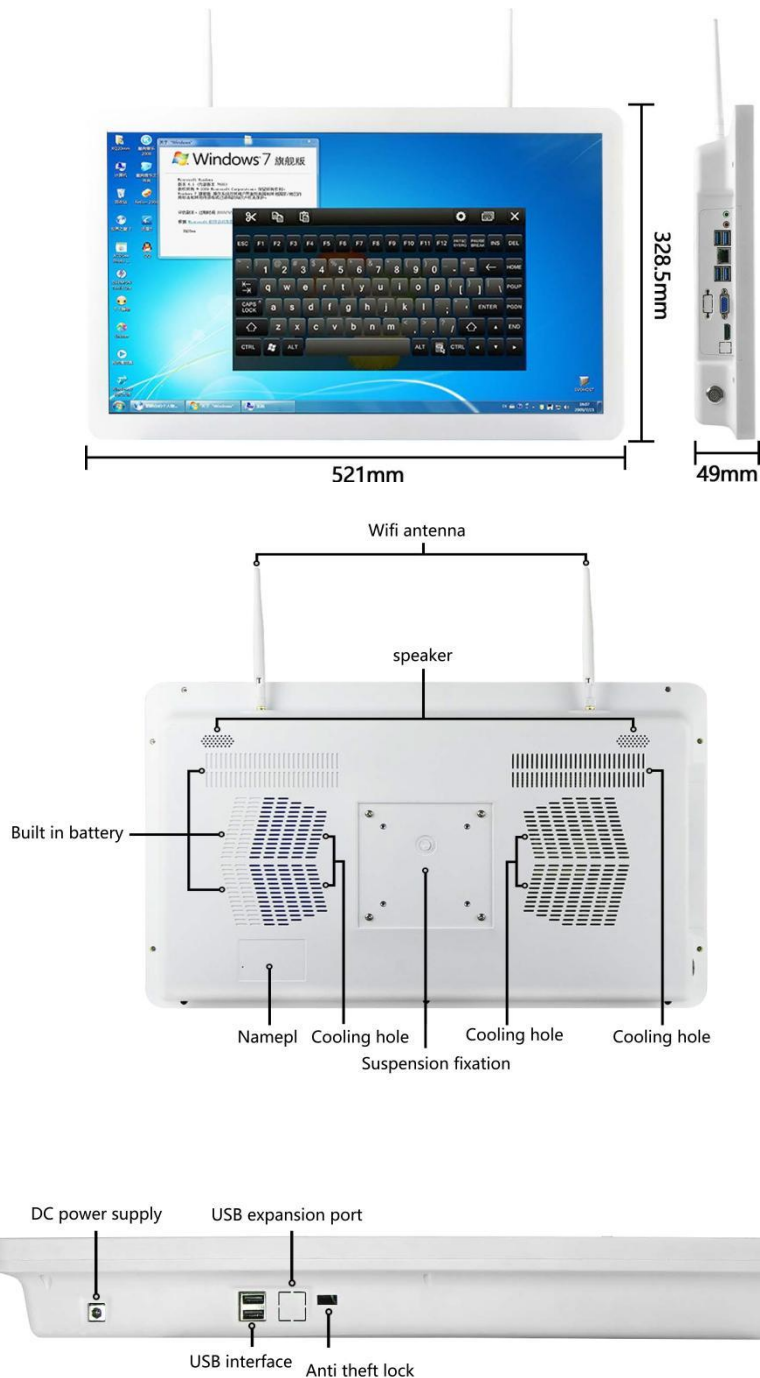
In order to avoid accidental failures, the computer should work within the following limited environmental range

content		Scope of application	remarks
Storage and transportation temperature		maximum temperature: +70℃ Minimum temperature: -30℃	
Relative humidity during storage and transportation		20%-80%	
Atmospheric pressure		86kPa-106kPa	
Adaptability of power supply		100V-240V (Frequency 50-60Hz)	
Lightning protection capability	Power Supply	1KV (Line to line) 、 2KV (Line to ground)	
	Telecommunication port	1KV (Line to line) 、 4KV (Line to ground)	
working temperature		Winter: 18℃ -20℃ Summer: 26℃ -28℃ .	
frequency		2.4G: 2412-2462MHz 5.1G: 5150-5250MHz 5.8G: 5475-5825MHz	

---

(1) Front and rear view





### III, operating instructions

Introduction to the simple operation of touch Integrated machine

Open the "Start" menu, click the right mouse button on the "Computer", and select "Properties" to open the system properties window. Under the "System" category, there is a "Pen and Touch". As long as it shows "available" here, it means that this computer supports touch operation. If it is displayed as "single touch", it means that this computer supports single touch, that is, you can use one operate with your fingers; if it displays as "multi-touch", it means that this

computer supports multi-touch, which can be used at the same time, When using two or more fingers to operate.

After clicking the left and right buttons, there is a more difficult problem, that is, the pointing operation of the mouse is using, When using the mouse, point the mouse pointer to the file on the screen, and the system will automatically display the relevant Information about the file. But when using touch operation, this kind of pointing operation is not easy to realize. If the device uses an electromagnetic induction touch screen, hover the stylus at a distance of about 1cm above the screen, Can realize the "pointing" operation; but now many devices, especially multi-touch devices, mostly use A pressure-sensitive screen is used, and it is required that the finger must be pressed against the surface of the screen to take effect. In this case, how to perform the "pointing" Instead of "left-click", open the "Control Panel", and then enter "Hardware and Sound"- "Pen And touch", open the "Pen and Touch" dialog box and switch to the "Touch" tab, in the "Touch Pointer" option Next, select "Show touch pointer when interacting with items on the screen."

Click the "Advanced Options" button to open the Advanced Options dialog box, where you can adjust the virtual mouse settings, such as left-handed or right-handed habits, the transparency and size of the virtual mouse, and the cursor after setting, click the "OK" button to close all open dialog boxes. After setting the above settings, click the "OK" button. After setting, after tapping the screen with your finger or stylus, a virtual mouse icon will appear around the touch point. Then you can drag the mouse with your finger or stylus to move the pointer, or click the left side of the mouse right click to realize mouse click operation.

## **IV, troubleshooting and solutions**

### ***1. There is no response to HDMI access (medical split computer)***

- (1) You can check whether the TV mode is adjusted properly (the TV has multiple HDMI/VGA ports);
- (2) Connect the HDMI cable first and then turn it on;
- (3) Try changing the HDMI cable or changing the TV or monitor (try the machine with VGA if necessary);
- (4) You can uninstall the graphics card driver and install it again (updates are also possible), and then try again (less cases);
- (5) You can restore the factory default values of the TV and try again.

### ***2. The machine runs with a blue screen or a blue screen when it is turned on, or there is no display problem when it is turned on***

- (1) After the machine runs for a period of time with a blue screen, try to patch or reinstall the system.

(2) You can try to replace a memory, and try to replace the memory without displaying the power on.

(3) When the blue screen is turned on, you can check whether the AHCI mode of the hard disk has not been changed, and enter the bios to modify it.

(4) If there is a blue screen when watching online video, please enter the system and try to update the flash software.

(5) Check whether the memory is plugged in properly, and see if the memory is plugged in securely.

### ***3. Hard disk problem***

(1)SSD hard disk problem

①If the disk cannot be recognized, re-plug the cable or try the hard disk (the plug-in cable is 2.5 inches, the hard disk is 1.3)

②The hard disk cannot be formatted or deleted, please send it back for replacement

③The system is very slow to start up, such as: It takes a long time to open the software. Try to reinstall the system first or unplug hard drive or line try

(2)、mechanical hard disk problem

①If you don't recognize the disk or boot into the BIOS directly, please unplug the hard disk cable and try. If you don't recognize the disk for a period of time, you can change the hard drive cable.

### ***4. Automatically restart or keep restarting after booting***

(1)The internal circuit of the machine is short-circuited (for details, please consult customer service).

(2)The machine will restart automatically after running for a period of time, first fix the heat dissipation, check the heat dissipation (confirm whether it is sleep or heavy start).

(3) The machine will crash intermittently. After all the system patches and system garbage are cleaned up, patches are applied to optimize the system.

(4)The memory can be plugged and unplugged

### ***5. wifi problem***

(1) If you don't see the wifi icon or wifi hit xx, go to the backup manager of the system to see if there is wifi driver, a yellow exclamation mark means there is a driver in the machine. At this time, download the driver wizard to update the driver; not have the yellow exclamation mark means that the wifi mode may not be recognized.

(2) If you connect to wifi but can't access the Internet, set the wireless router down or off and then on, you can also update the driver or uninstall the driver and reinstall it, and set up your own router.

## ***6. Bluetooth problem***

1. There is a driver but the Bluetooth cannot be searched, you can update the driver, put the blue in the software of 360 Kingsoft and other services try to open the tooth server

## ***7. There is no sound or no sound from the HDMI of the machine interface***

1. There is no sound when the machine is connected to HDMI, first check whether the driver is installed (enter the device manager to see), update it if it is not installed. Then enter the system, there is a small speaker icon in the lower right corner of the desktop, right mouse button→sound device→speaker→settings default value

2. Nothing after setting, advance to Kingsoft or 360 to turn on the Realtek sound card service.

## ***8. The CPU fan is noisy***

(1) Open the net cover and use something to pry the iron piece around the fan to try it.

(2) The fan is too noisy, and the temperature can be adjusted.

## ***9. Two lines of English words appear in the system when booting up***

(1) Enter PE and guide the system well (Customers who don't understand PE or don't have PE can consult customer service)

## ***10. After entering the system, the screen cannot be full screen or displayed incompletely***

(1) You can adjust the screen, right click the mouse→graphic properties→display→custom aspect ratio (keep XX and don't click √)→You can freely stretch the screen until it fits the screen.

(2) You can update the graphics card before setting. After patching, optimize the system.

## ***11. USB power supply problem***

(1) Uninstall the driver and reinstall the driver.

(2) If possible, you can try to replace the adapter.

(3) Try to replace the mouse and keyboard.

## 12. Adapter problem

(1) The power light flashes once and again, and the host cannot be turned on. It may be the adapter, or the host may have a problem.

(2) If the power light is not on, the adapter may be broken. Replace it directly.

The problem with the desktop but no icon is displayed:

Solution: The buyer needs to be on the desktop-->right-click properties-->screen resolution-->display only on the second monitor,It can be solved.

## V , special tips

1) The patterns in this manual are only used to illustrate the operation, not as a basis for product inspection.

2) The illustrations in this manual may be different from the product, and the actual sales style shall prevail.

3) The company has the right to make changes to improve product performance without prior notice.

4) The company's dedicated computer products do not include system software. Users can provide systems and software. The company's behalf for installation.

### Appendix Care and Maintenance

#### Common sense of hardware maintenance

1. Do not block the cooling holes of the host and display with objects during use.

2. Some parts of the computer, such as the display, are more sensitive to magnets, and strong magnetic fields can damage these parts strongly. It does not work well, so your computer should be anti-magnetic, and don't place the computer and the disk close to the magnet.

3. An excessively humid environment will also cause adverse effects on the computer, so special attention should be paid to moisture-proof. And other liquids are spilled on the computer. Once this happens accidentally, you should immediately cut off the computer's power supply. Or long press the power button to force it to shut down.

4. Many parts in the computer belong to precision instruments, such as hard drives, optical drives, etc. So hold it lightly when moving the computer, Please pay special attention not to move the computer when it is turned on. This operation can easily damage the hard disk head and optical drive. Even after shutting down, do not move the computer immediately. You should wait at least one minute for the hard disk and other components to stop completely move after stopping work.

5. You may need to wipe off the dust and fingerprints on the computer and monitor screen from time to time. Before cleaning the computer, you should turn off the power first and unplug the power cord.

Slightly moisten the cloth with water and a non-detergent cleaning solution (do not use spray liquid or soak the cloth), then wipe the computer.

When the computer is cleaned and dried thoroughly, turn on the power switch again.

Do not clean the floppy disk by yourself. Common sense of software maintenance

1. Please refer to the software manual for the correct installation of the random software.

2. If the software needs to be upgraded and updated, please go to the corresponding website to upgrade and update in time.

3. Please check and kill viruses regularly to avoid software difficulties caused by viruses.

4. If the software fails, please refer to the technical support manual to contact the software manufacturer for technical support.

**FCC Caution.**

This device complies with part 15 of the FCC Rules. Operation is subject to the following two conditions: (1) This device may not cause harmful interference, and (2) this device must accept any interference received, including interference that may cause undesired operation.

Any Changes or modifications not expressly approved by the party responsible for compliance could void the user's authority to operate the equipment.

**Note:** This equipment has been tested and found to comply with the limits for a Class B digital device, pursuant to part 15 of the FCC Rules. These limits are designed to provide reasonable protection against harmful interference in a residential installation. This equipment generates uses and can radiate radio frequency energy and, if not installed and used in accordance with the instructions, may cause harmful interference to radio communications. However, there is no guarantee that interference will not occur in a particular installation. If this equipment does cause harmful interference to radio or television reception, which can be determined by turning the equipment off and on, the user is encouraged to try to correct the interference by one or more of the following measures:

- Reorient or relocate the receiving antenna.
- Increase the separation between the equipment and receiver.
- Connect the equipment into an outlet on a circuit different from that to which the receiver is connected.
- Consult the dealer or an experienced radio/TV technician for help.

RF warning for Mobile device:

This equipment complies with FCC radiation exposure limits set forth for an uncontrolled environment.

This equipment should be installed and operated with minimum distance 20cm between the radiator & your body.