



FireBoard Labs
Kansas City, MO
info@fireboard.com
816-945-2232

www.fireboard.com

FireBoard is a trademark of FireBoard Labs, LLC and is registered in the U.S. Apple, the Apple logo, iPad, iPhone and iPod touch are trademarks of Apple Inc., registered in the U.S. and other countries. App Store is a service mark of Apple Inc. The Bluetooth word mark and logos are registered trademarks owned by Bluetooth SIG Inc.

FireBoard® TM and © 2023 FireBoard Labs, LLC.
All rights reserved.




FireBoard®
ANTENNA



S1G

Getting Started with FireBoard Antenna

The FireBoard Antenna attaches to the auxillary port of FireBoard to enable FireBoard S1G™ technology. When active, the  icon will appear.

Remember to connect the FireBoard to WiFi so the most recent firmware can be automatically updated.

When a S1G device transmits data to the Antenna, the data will be viewable from the FireBoard screen and via the FireBoard Mobile App.



SJ3D9474R

00:04

TIME SINCE LAST

33.40%

HUMIDITY

(example screen showing Beacon data)

73.4°F

INT. TEMPERATURE



Specifications

Outer Dimensions

2.9" L x 1" W x 1.1" H (74mm x 25mm x 28mm)

Frequency Range

902 - 928 Mhz

Connector

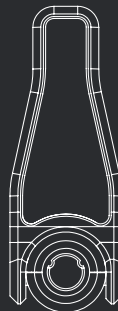
8 pin Mini-DIN

Compatibility

FireBoard 2 Series

Power Source

Powered from FireBoard via aux port



Visit docs.fireboard.io for
our online Knowledge Base!