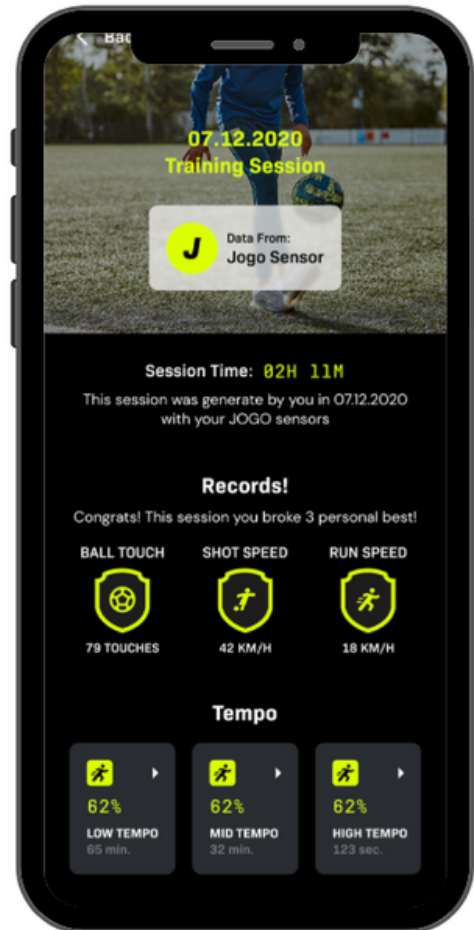


User Manual

Jogo Sensor (JS100)



Product Information

JOGO Sensors track 200 data points 1000 times a second for a complete overview of a player's performance. The insole sensors are frictionless and fit perfectly into each football boot.

Together with data analytics JOGO creates reports and dashboards for players and coaches to analyze performance.

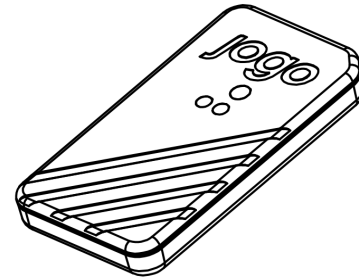
Data points

The JOGO sensors currently measure the following data points:

- Total distance
- Time on the ball
- Ball touches
- Average speed
- Ball received
- Total sprints
- Dribbling distance
- Deceleration
- Running distance
- Sprint speed
- Passes
- Leg distribution
- Mechanical work
- Shot power
- Acceleration
- Walking distance
- Work rate

Product Accessories

1. 2x Jogo Sensors
2. USB Magnetic charger
3. 2x Jogo Sensor Insoles
4. User Manual





Operation

Installation & Power-on

Then Jogo Sensors can be inserted into the Jogo Insoles in the designated slot on the back of the insoles.

NOTE: Please note to insert the Jogo Sensor so that the QR Code is still visible.



| WRONG | CORRECT |
|---|--|
|  |  |

Please charge the sensors when using them for the first time. This will also turn-on the sensors.

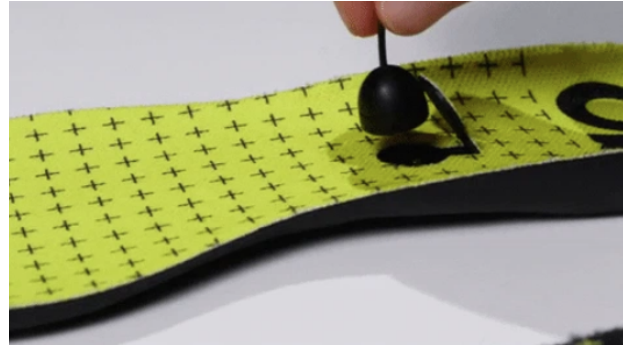
Charging

Plug in the USB charging cable, open the cover in the insole and connect the magnetic charger to the device.

NOTE: The charger will snap and connect only in one way, don't force the magnetic charger on the Jogo sensor.

Charging: Blue LED flashes

Full battery: Green LED flashes

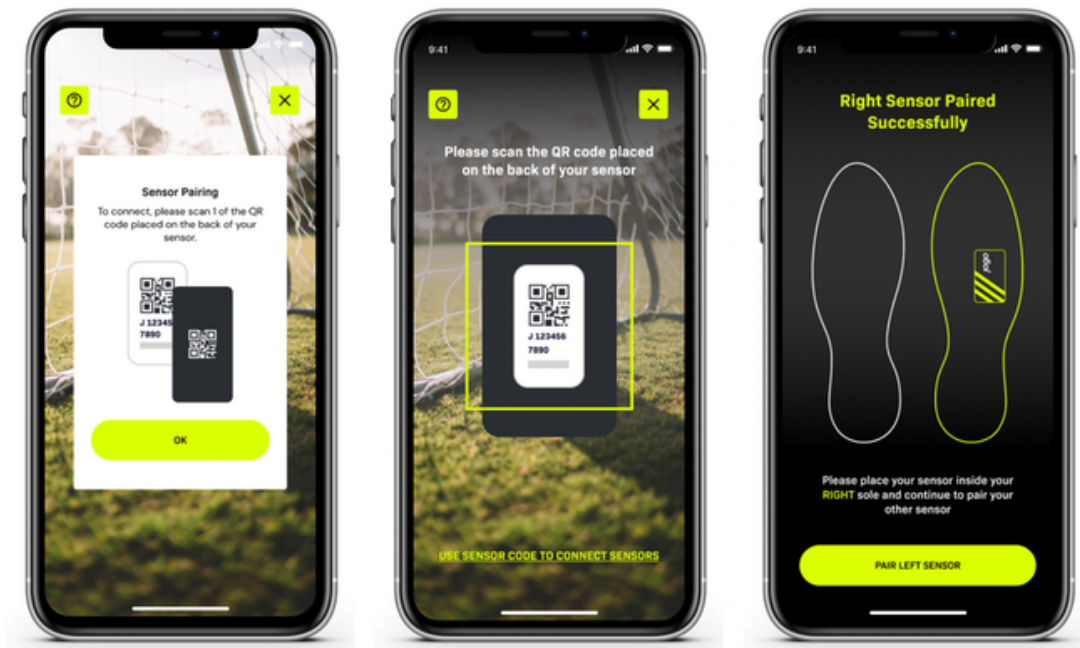


Jogo App & Pairing

To connect and pair the Jogo Sensors with your phone please download the Jogo App for iOS or Android and follow the steps in the Jogo App.

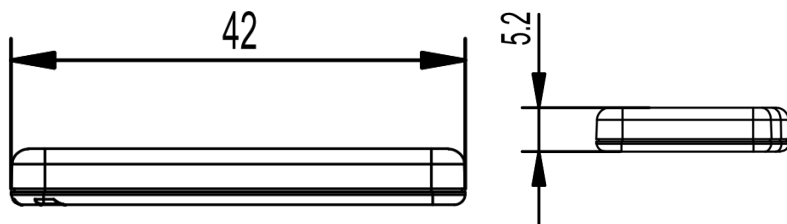


Download the Jogo App
by scanning this QR code



Specification

| Specification | Min | Type | Max |
|--|--------------------------|--------|-------|
| Electronic specification | | | |
| External Voltage Input (spring contacts) | 4.05V | 5.00V | 6.05V |
| External Current Input (spring contacts) | - | - | 80 mA |
| Battery voltage | | 3.7V | 4.2V |
| Battery capacity | 80 mAh | 85 mAh | |
| Battery type | Lithium Polymer | | |
| | | | |
| Technology | | | |
| Wireless technology | Bluetooth 5, 2.4 GHz | | |
| Motion Sensor | 6D, ±32G, ±4000dps | | |
| Flash memory | 128 Mbit, NOR Flash | | |
| LED | RGB LED | | |
| | | | |
| Mechanical | | | |
| Enclosure | IP65, ABS | | |
| Dimensions | 42 x 23 x 5 mm | | |
| Weight | 4.0 g | | |
| | | | |
| Environmental | | | |
| Operating temperature | 0°C ~ 45°C (Charge) | | |
| | -10°C ~ 65°C (Discharge) | | |
| Storage temperature | -10°C ~ 35°C | | |



Disclaimer

- The information contained in this manual is just for reference. The product described above may be subject to alteration owing to the manufacturer's continuing research and development plans, without making an announcement in advance.
- We shall not bear any legal responsibility for any direct or indirect, accidental or special damages, losses and expenses arising from or in connection with this manual or the contained product.

EU-Declaration Of Conformity

Hereby, We declare that the Jogo Sensor JS100 is in compliance with provisions of Directive RED 2014/53/EU. A copy of the signed and dated Declaration of Conformity is available.

FCC Statement

This device complies with part 15 of the FCC Rules. Operation is subject to the following two conditions: (1) this device may not cause harmful interference, and (2) this device must accept any interference received, including interference that may cause undesired operation.

Any changes or modifications not expressly approved by the party responsible for compliance could void the user's authority to operate the equipment.

NOTE: This equipment has been tested and found to comply with the limits for a Class B digital device, pursuant to Part 15 of the FCC Rules. These limits are designed to provide reasonable protection against harmful interference in a residential installation. This equipment generates, uses and can radiate radio frequency energy and, if not installed and used in accordance with the instructions, may cause harmful interference to radio communications. However, there is no guarantee that interference will not occur in a particular installation.

If this equipment does cause harmful interference to radio or television reception, which can be determined by turning the equipment off and on, the user is encouraged to try to correct the interference by one or more of the following measures:

- Reorient or relocate the receiving antenna.
- Increase the separation between the equipment and receiver.

- Connect the equipment into an outlet on a circuit different from that to which the receiver is connected.
- Consult the dealer or an experienced radio/TV technician for help.

The device has been evaluated to meet general RF exposure statement. The device can be used in portable exposure condition without restriction

FCC ID: 2A299-JS100

WARNING: Changes or modifications to this unit not expressly approved by the part responsible for compliance could void the user's authority to operate the equipment

