

# Turtlebox Audio LLC

---

Date: 5/22/2025

Company: Turtlebox Audio LLC  
Address: 11020 Katy Freeway Suite 202 Houston, TX 77043

Product Name: Bluetooth Speaker  
Model Number(s): TURTLEBOXG3, TURTLEBOX

Dear Sir/ Madam,

This purpose of this filing is to request an **EQUIPMENT MODIFICATION / REASSESSMENT** for FCC ID: 2A28W-TURTLEBOXG3 originally Certified on [Date: 2024-08-26]

The change under this application is for the following reasons:

RF

1. Change the Bluetooth chip memory(U14) from JL1706C8(8Mbit Flash) to JL1706C6(16Mbit Flash), Retest part 15.207Conducted Emission/part 15.209 Radiated Spurious Emission/ part 15.205 Restricted bands of operation and Part 15.247(d) Band Edge Emission
2. MOS tube Q10/Q20/Q17/Q21 change(Pin to pin and parameters are the same), Retest part 15.207Conducted Emission/part 15.209 Radiated Spurious Emission

Description	Re-testing item	Remark
part 15.207Conducted Emission part 15.209 Radiated Spurious Emission part 15.205 Restricted bands of operation  Part 15.247(d) Band Edge Emission	Need testing	The Original FCC testing on module under FCC ID: 2A28W-TURTLEBOXG3:  1. Change the Bluetooth chip memory from JL1706C8(8Mbit Flash) to JL1706C6(16Mbit Flash).  MOS tube change(Pin to pin and parameters are the same)
BOM/ Schematic Diagram	Provided	Already Provided
External/ Internal Photos	Provided	Already Provided

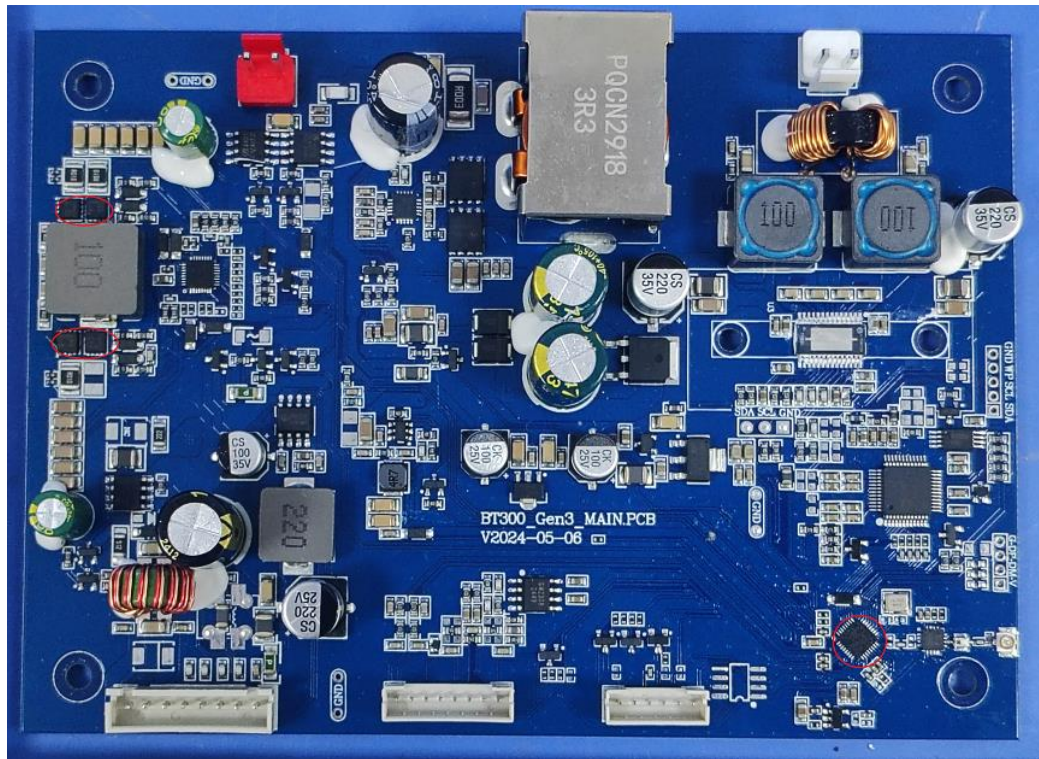
- a. We declare that this variant device does not increase the RF output power for all RF parts, and PCB layout are not changed.

# Turtlebox Audio LLC

## KDB 178919 D01 Permissive Change Policy v06 Requirements

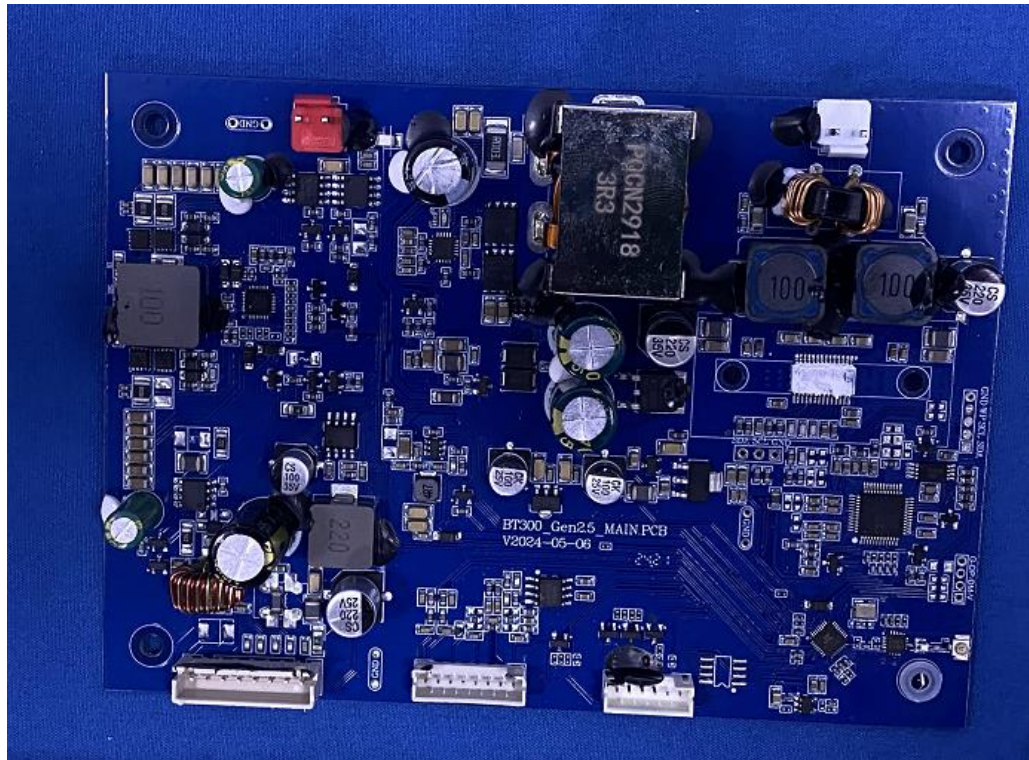
Requirements	Remark
No hardware changes have been made	Yes, not change PCB and main chips and circuits
There is no increase in the output power rating on new frequencies	Yes, the output power rating are less than original max power
The Equipment Class remains the same.	Yes, the same Equipment Class are DSS, DTS
RF exposure changes must be addressed	NO
Only the original equipment manufacturer may implement the new frequencies	Yes, original equipment manufacturer will apply C2PC
There are no other changes to the device that indicate a need for a new FCC ID	Yes, Such changes are NOT considered electrically identical(KDB 178919 D01 chapter III C footnote5)

New PCB



Old PCB

# Turtlebox Audio LLC



Name: Jonathan MacKenzie

Date: 2025-05-14

Title: Co-founder

Signature of applicant