

User Guide



Umbrella Light-Speaker Operation & Installation Instructions

dot.

User Guide

WARNING!

- Do not use this unit for anything other than its intended use. Improper use can cause permanent damage to the device and/or injury.
- Follow instructions carefully, and if you require assistance, call us at 416-252-2228 ext.221 or your local Dot store.
- Use the device in dry conditions only and do not expose to any liquids.
- Do not expose the device to direct sunlight for extended periods.
- Keep the device away from sources of heat.
- If the device becomes hot, place in a cool and dry location until it has cooled.
- Do not leave this product unattended while connected to a power supply
- Make sure the device is fully secured/tightened to any attachment pieces.
- If the device is to be used without attachments, it must be placed on a sound, even surface and free of vibrations.
- Keep this product out of reach of children.
- Keep free of dust, lint, hair.
- Keep this product out of reach of children.

Specifications

Bluetooth Version:	5.0
Speaker Output:	5W
Play Time:	Up to 4 hours
Charge Voltage:	DC 5V/1A (USB)
Bluetooth Range:	8-10m (26-32 feet)
Built-In Rechargeable Battery:	3.7V/4000mA

Speaker-Light Parts



a. Velcro Strap x2



b. Attachment Adapter



c. Adapter Ring



d. Hook



e. Remote



f. Remote Holder



g. Charging Cable



h. Speaker-Light

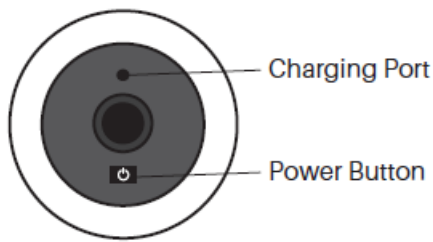
User Guide

Operating Instructions

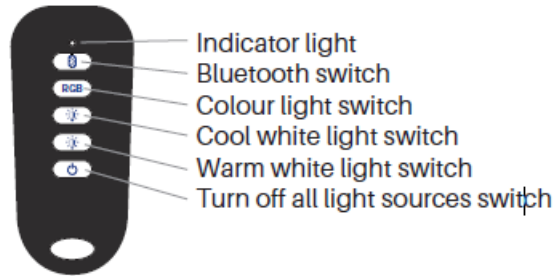
Charging the Light-Speaker

Before using the device, the light-speaker must be charged to operate. The charging port on the back of the device is DC5V 1.0A input. Plug the supplied cable into a USB adapter charger (not included) to charge the device.

Back of Light Speaker



Remote



Pairing light-speaker with mobile device

1. Press and hold the power-on button on the back of the light-speaker for 1~3 seconds. The blue indicator light on the lampshade should now be on.
2. Pair the devices within 10 seconds after the light is on. To pair, press the Bluetooth symbol button and RGB button at the same time.
3. Open your Bluetooth settings on your phone, scan and select the device named "DFSS01". The speaker-light will say "connected". You can now start playing music from your mobile device. If the devices fail to connect, power off the light-speaker and repeat steps 1-3 again.

Operating Lights

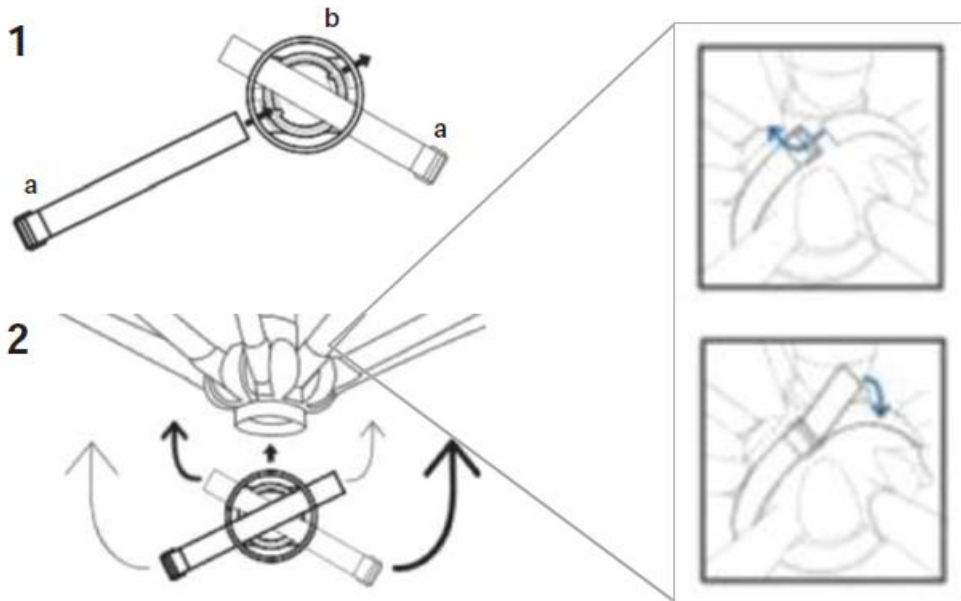
1. When the light-speaker is on, press the RGB button of the remote control. Each time you press the RGB button, the light colour or effect will change. You can cycle through 15 different colours/effects. At the 16th press of the RGB button, the colour light will turn off.
2. To turn the plain white light, there are two options; cool or warm. On the remote, the button with the lightbulb at the top is the cool white light button and the button under that with the lightbulb is the warm light button. Press each button up to three times to control the brightness of the light. Press the bulb button a fourth time to turn the white light off.
3. Warm light and color light can be lit at the same time to achieve a mixed light effect.
4. Press the power button on the remote control to turn off all light sources.

User Guide

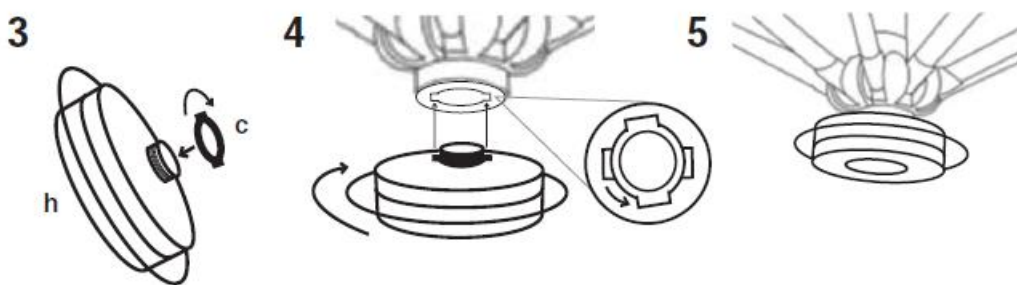
Attaching Light-Speaker

This device can be used on it's own by simply resting it on a flat surface, or it can be hung or attached to a variety of surfaces using one of the attachment parts.

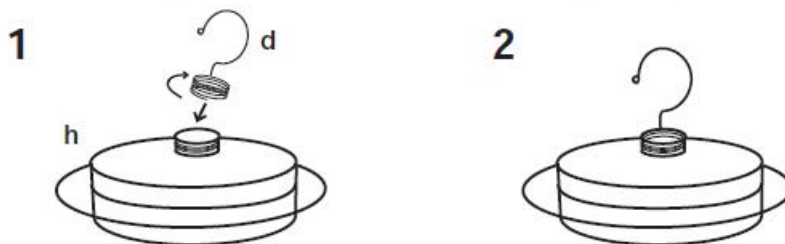
Attaching Light-Speaker to Umbrella or Parasol



Note: For an umbrella, attached to two ribs close to the center of the umbrella.



Attaching the Hook to the Light-Speaker



User Guide

FCC Statement

This device complies with Part 15 of the FCC Rules. Operation is subject to the following two conditions: (1) this device may not cause harmful interference, and (2) this device must accept any interference received, including interference that may cause undesired operation. Changes or modifications not expressly approved by the party responsible for compliance could void the user's authority to operate the equipment.

FCC Warning

Any changes or modifications in construction of this device which are not expressly approved by the party responsible for compliance could void the user's authority to operate the equipment.

This equipment has been tested and found to comply with the limits for a Class B digital device, pursuant to Part 15 of the FCC Rules. These limits are designed to provide reasonable protection against harmful interference in a residential installation. This equipment generates, uses and can radiate radio frequency energy and, if not installed and used in accordance with the instructions, may cause harmful interference to radio communications. However, there is no guarantee that interference will not occur in a particular installation. If this equipment does cause harmful interference to radio or television reception, which can be determined by turning the equipment off and on, the user is encouraged to try to correct the interference by one or more of the following measures:

- Reorient or relocate the receiving antenna.
- Increase the separation between the equipment and receiver.
- Connect the equipment into an outlet on a circuit different from that to which the receiver is connected.
- Consult the dealer or an experienced radio/TV technician for help.

FCC RF Radiation Exposure Statement

This equipment complies with FCC radiation exposure limits set forth for an uncontrolled environment.

This equipment should be installed and operated with a minimum distance of 20 cm between the radiator and your body.