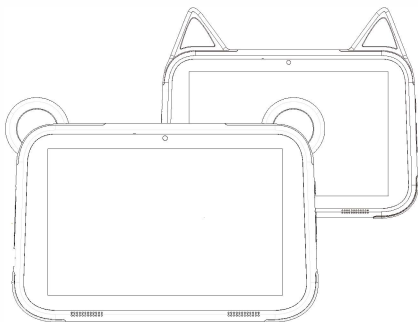




User Manual



Tablet PC

AT801UC/AT801UB/AT801PUB

Please read this manual before operating your device
and keep it for future reference.

Since the tablet software updates regularly, the user manual may not cover all aspects of new features.

We would like you to have a safe and enjoyable experience, please read the following instructions and notices before using your tablet.

1. Please fully charge the tablet before the first use.
2. The tablet is not moisture/water-resistant, please don't use it around sources of water.
3. Avoid using the tablet in extremely hot, cold, dusty, damp or wet environments.
4. Do not use alcohol, thinner or benzene to clean the surface of the tablet. Use only cleaning products designed for computer tablet devices.
5. Do not drop or hit the tablet against a hard surface or the screen may be damaged or cracked.
6. Do not use the tablet while driving or walking.
7. While using earphones, if the volume is excessively high it may cause hearing damage. Please adjust the volume to a safe level and moderate use.
8. Do not disconnect the tablet suddenly when updating, uploading or downloading data, this may lead to program errors.
9. Do not dismantle the tablet.
10. Do not use other accessories except specified or provided by the manufacturer(such as the power adapter, battery etc).

What's In The Box



Tablet



Instruction
manual

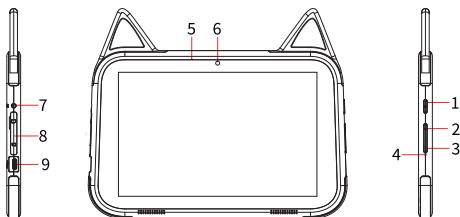


Charger



USB cable

Function Overview



1. POWER/LOCK

2. VOLUME+

3. VOLUME-

4. RESET

5. MIC

6. CAMERA

7. EARPHONE JACK

8. MicroSD CARD SLOT

9. TYPE-C

Getting Started

Prior to use, it is recommended to install a microSD memory card (not included, to expand storage capacity) and charge the battery.

Note: A memory card can be installed at any time, it's not necessary to install it prior to using the tablet.

Install The microSD Card

Align the memory card with the micro SD slot, the metal portion of the memory card should be facing away from the LCD screen, then push the card into the slot until you hear a click, this signifies that the card is clicked into place.

Warning: The microSD card can be easily damaged by scratching or bending, so be careful when handling, inserting, or removing the card. Keep all cards out of reach of small children.

Charge The Battery

The tablet comes partially charged, it is recommended to fully charge it before the first use. Connect the USB cable to the adapter, and insert the other end to the type-c port of tablet, then plug the AC adapter into a wall outlet. It will take up to 2 hours to fully charge the battery.

Note: Please leave the tablet in well ventilated area while charging.

Warning: Use only Azeyou-approved charging adapters and batteries. Azeyou accessories are designed to maximize battery life, using other accessories may invalidate your warranty and may cause damage.

Turning On

Press and hold the Power/Lock button until the tablet starts up, the Azeyou logo indicates that the tablet is loading, then choose your language and tap START to set up the tablet following the guide and prompts.

Turning Off

Press and hold the Power/Lock button until the device option menu displays, tap Power off to turn off the tablet.

Restart and Screenshot

Press and hold the Power/Lock button until the device option menu displays, tap Restart to restart the tablet, tap Screenshot to capture a screenshot.

Tips: You can also capture a screenshot by pressing and holding the Power/Lock button and Volume - button at the same time for 1 second.

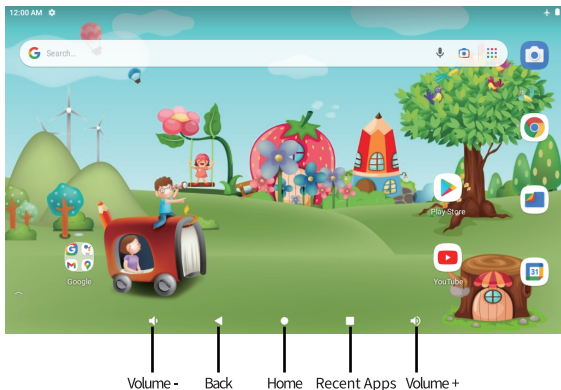
Sleep Mode, Lock/Unlock Tablet

When the tablet is on, you can turn off the screen to save power, press the Power/Lock button once to turn off the screen and lock the tablet, press it again to turn on the screen, and swipe up to open.

Touch Screen Basics

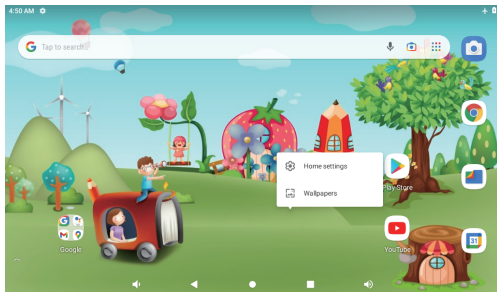
- Tap the screen once to activate or open something.
- Touch and hold to move an app by dragging.
- Zooming: Double tap quickly to zoom into a webpage, picture, or map. Some apps allow you to zoom in and out by touching the screen with two fingers, and pinching them together.
- Tap a specific location on the screen where you would like to enter text. The on-screen keyboard will pop up.

Home Screen



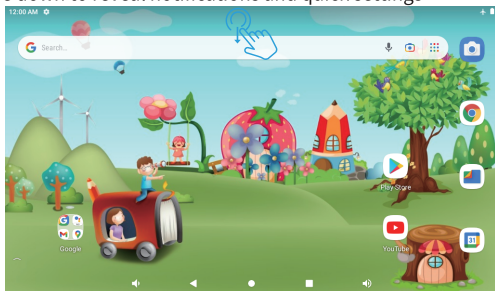
Home settings and Wallpapers

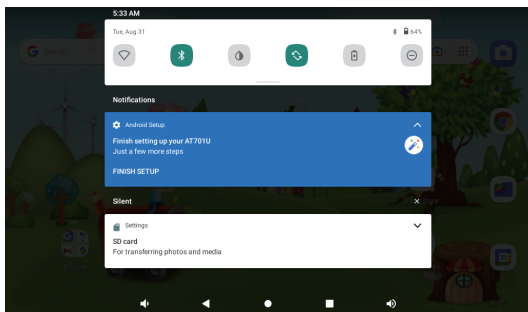
- Tap and hold your finger on blank space of the home screen, a pop-up menu will be displayed.
- Tap Home settings to enable/disable Add app icons to Home screen and Enable grid options.
- Tap Wallpapers to change current wallpaper from default wallpapers or photos.









Quick Settings

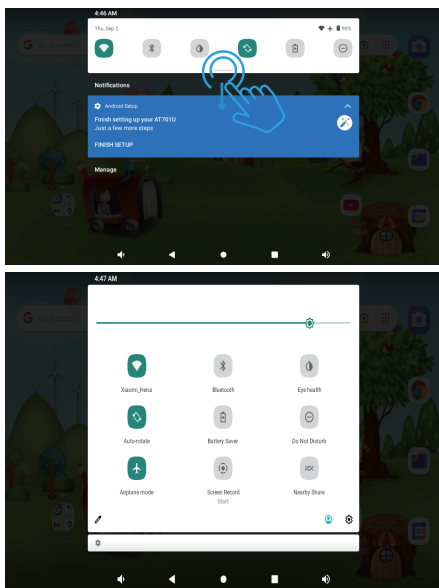
Slide down to reveal notifications and quick settings





-  Enable/Disable Wi-Fi network connection.
-  Enable/Disable Bluetooth connection.
-  Eye health.
-  Auto-rotate: Turn on/off screen auto-rotate.
-  Battery Saver: Turn on/off battery saver.
-  Do Not Disturb: Only get notified by important people and apps.

Slide down to show more quick settings.



Screen Brightness: To adjust the screen brightness.



Airplane Mode: Turn on/off all wireless network connection.



Screen Record: Turn on/off screen record.



Nearby Share: Turn on/off nearby share.

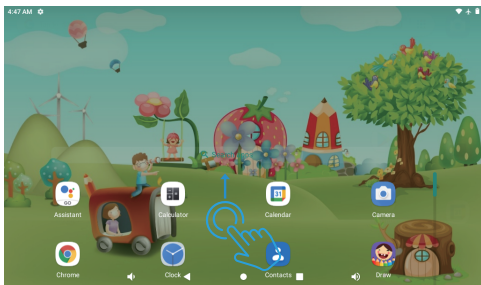


Edit: To edit quick setting options.

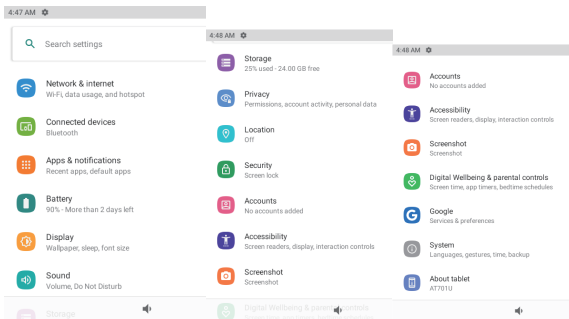
User: To add guest, add user.

Detailed Setting: To enter detailed settings.

Tips: You can also slide up to open the app list on home screen, then tap Settings to enter detailed settings.



Detailed Settings



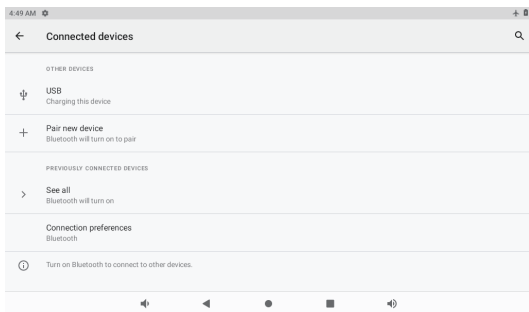
Network & internet

- Wi-Fi: Enable/Disable Wi-Fi connection, tap to connect to Wi-Fi network, select your Wi-Fi name and enter password to connect it.
- Airplane mode: Turn on/off all wireless network connection.
- Hotspot & tethering: To set USB tethering, Bluetooth tethering and Ethernet tethering.
- Data Saver: Enable/Disable Use Data Saver.
- VPN: To set VPN.
- Advanced: To set Private DNS Mode.



Connected devices

- USB: To set USB computer connection: File Transfer, USB tethering, PTP, No data transfer.
- Pair new device: To check all available Bluetooth devices, and tap the device name to pair it with the tablet.
- See all: To see all previously connected devices.
- Connection preference: Enable/Disable Bluetooth connection, set cast devices, check or add print service, check files received via Bluetooth, share files with nearby devices.



Tips: File Transfer: For file transfer between tablet and computer.
USB tethering: For USB tethering.
PTP: Only for photo transfer between tablet and computer.
No data transfer: Charge only.

Apps & notifications

- Check the list of recently opened apps.
- Conversations: Priority and modified conversations will appear here.
- Notifications: To check the notification history, bubbles and recently sent.
- Screen time: To check the dashboard of screen time, notification received and times opened.
- Advanced: To set default apps, set permission manager, wireless emergency alerts, special app access.

Battery

- Battery Saver: Turn on/off battery saver, set a schedule, turn off when charged.
- Battery Manager: Turn on/off detecting when apps drain battery.
- Battery percentage: Enable/Disable to show battery percentage in status bar.

Display

- Brightness level: Adjust the brightness level of screen.
- Dark theme: Turn on/off dark theme.
- Wallpaper: Change the wallpaper.
- Screen timeout: Set the screen timeout.
- Auto-rotate screen: Turn on/off auto-rotate screen.

Advanced: Set the font size, display size, screen saver and lock screen.



Sound

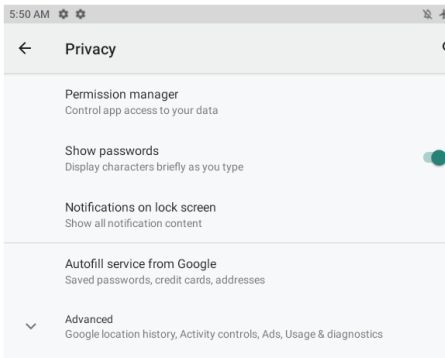
Set the volumes of media, alarm and notifications, Do Not Disturb, default sounds.

Storage

View and manager storage

Privacy

Set app permissions, show passwords, notifications on lock screen, autofill service from Google.



Location

Turn on/off location service for certain apps.

Security

Check security status, scan apps, turn on/off find my device.

Accounts

Add and manage user accounts on the tablet, turn on/off automatically sync app data.

Accessibility

Set screen reader, select to speak, talkback, text-to-speech output, set font size, display size, dark theme, magnification, large mouse pointer, remove animations, accessibility menu, switch access, autoclick, auto-rotate screen, touch & hold delay, time to take action, vibration & haptic strength, system navigation, Mono audio, audio balance, caption preference, High contrast text, Advanced (color correction, color inversion, shortcut from lock screen).

Screenshot

Set delay time to capture the screen, show the screenshot button in the statusbar.

Digital Wellbeing & parental controls

Set the ways to disconnect, reduce interruptions, add content restrictions and set other limits to help child balance screen time.

Google

Sign in to your Google Account, then set up Google services on this tablet.

System

Set languages & input, Date & time, Backup, Reset options and Advanced (Multiple users and system update).

About tablet

Check the information about this tablet.

APP Management

Download App

- Tap Google Play on the home screen.
- Sign in to your Google Account, then search for apps to download.

Move App

Tap and hold the app, then drag it to the desired place.

Create App folder

Tap and hold an app, drag it to another app, an app folder will be created, tap the folder to edit folder name, then you can drag favourite apps to this folder.

Remove App from home screen

Tap and hold the app, then drag it to X Remove to remove it from home screen.

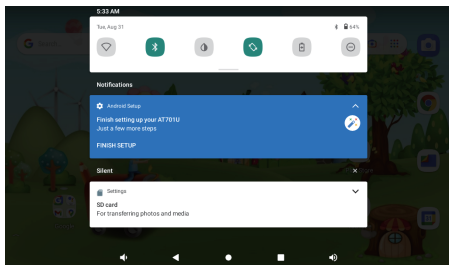
Uninstall App

Tap and hold the app, then drag it to Uninstall to uninstall it.

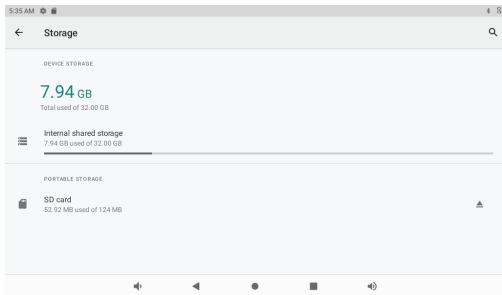
Tips: You can also tap and hold the app, tap App info, then tap uninstall to uninstall the app.

Connecting to microSD memory card

- Align the memory card with the micro SD slot, the metal portion of the memory card should be facing away from the LCD screen, then push the card into the slot until you hear a click, this signifies that the card is clicked into place.
- Slide down to open quick setting on home screen, tap to open the microSD card.

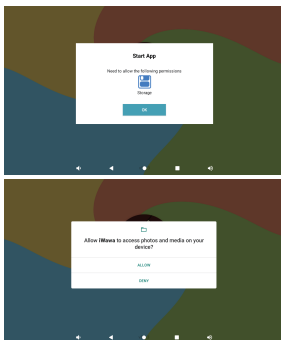


Tips: You can also tap Settings -- Storage -- SD card to open the microSD card, tap to eject the card.



Introduction of iWawa app

- Tap iWawa app icon to start app, and allow permissions or deny.



- The tablet needs to be registered for initial use, tap Wi-Fi setting to set Wi-Fi network, then tap Commit to register the tablet.

Internet Register

Device ID (Serial Number): _____

Product Code: _____

Register Code: _____

Wi-Fi Setting

Commit

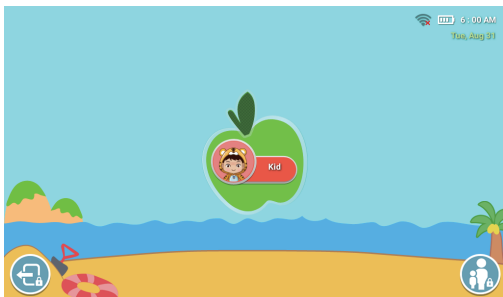
ASB

APP: Version=5.9.3

CFG: Version=3, Build Number=20200917

iWawa Home screen

Please ensure that you've obtained direct approval from all necessary third party app developers for uses of their materials.



Log in kid mode



Log out with parent password



Log in Parental Control with parent password

Parental Control

 Parental Control

Upgrade to Premium



Click Here to Sign in

To access Online Services, you'll need to Sign in.

Manage content



Kids Store



Applications



Websites



Media Content



Upgrade to Premium: To upgrade account type.

Click Here to Sign in: Sign in to access online services.

Kids Store: To download and install kids app.

Applications: Set available apps for kids.

Websites: Set permission of browsing websites, Add websites.

Media Content: Set available media content for kids.

Whitelist: Set white listed apps.

 Parental Control

Manage account



Accounts



Time Limit



Statistics



Security



Settings



Exit



Invite Friends

Accounts: Add, Delete or Edit Kids Accounts.

Time Limit: Set Time Limit.

Statistics: Check usage time.

Security: Change parent password, Lock Home Button, Lock Notification Bar, Lock Media Volume Range.

Settings: Set premium, Language, Wi-Fi, Storage path, Android settings, Feedback.

Exit: Exit iWawa app.

Specification

Display	8"
Resolution	1280 x 800
Operation System	Android™ 11(Go edition)
CPU	Quad-core 1.8GHz
GPU	G52 2EE
RAM	2GB
Storage	32GB
Battery	4000mAh
Housing Material	Plastic
Front Camera	2MP
Audio	Dual loudspeakers
Ports	Type C, microSD slot, Headphone jack
Wi-Fi	Support 2.4G
Bluetooth	BT 4.2
Power Supply	DC 5V/2A

Compliance Information

This device complies with Part 15 of the FCC Rules. Operation is subject to the following two conditions: (1) This device may not cause harmful interference, and (2) this device must accept any interference received, including interference that may cause undesired operation.

Caution: Changes or modifications not expressly approved by the party responsible for compliance could void the user's authority to operate the equipment.

NOTE: This equipment has been tested and found to comply with the limits for a Class B digital device, pursuant to part 15 of the FCC Rules. These limits are designed to provide reasonable protection against harmful interference in a residential installation. This equipment generates, uses and can radiate radio frequency energy and, if not installed and used in accordance with the instructions, may cause harmful interference to radio communications. However, there is no guarantee that interference will not occur in a particular installation. If this equipment does cause harmful interference to radio or television reception, which can be determined by turning the equipment off and on, the user is encouraged to try to correct the interference by one or more of the following measures:

- Reorient or relocate the receiving antenna.
- Increase the separation between the equipment and receiver.
- Connect the equipment into an outlet on a circuit different from that to which the receiver is connected.
- Consult the dealer or an experienced radio/TV technician for help.

Radiation Exposure Statement

The device has been evaluated to meet general RF exposure requirement. The device can be used in portable exposure condition without restriction.

The Bluetooth® word mark, figure mark (stylized “B Design”), and combination mark (Bluetooth word mark and “B Design”) are registered trademarks and are wholly owned by the Bluetooth SIG.

Wi-Fi is a registered trademark of the Wireless Fidelity Alliance, Inc.

MicroSD™ and the microSD logo are Trademarks of the SD Card Association.

Google, Android, Google Play, Google Maps and other marks are trademarks of Google LLC.

This device complies with part 15 of the FCC rules. Operation is subject to the following two conditions: (1) This device may not cause harmful interference, and (2) this device must accept any interference received, including interference that may cause undesired operation.

15.21 Information to the user.

Any changes or modifications not expressly approved by the party responsible for compliance could void the user's authority to operate the equipment. 15.105 Information for the user.

Note: This equipment has been tested and found to comply with the limits for a Class B digital device, pursuant to part 15 of the FCC rules. These limits are designed to provide reasonable protection against harmful interference in a residential installation. This equipment generates, uses and can radiate radio frequency energy and, if not installed and used in accordance with the instructions, may cause interference to radio communications. However, there is no guarantee that interference will not occur in a particular installation. If this equipment does cause harmful interference to radio or television reception, which can be determined by turning the equipment off and on, the user is encouraged to try to correct the interference by one or more of the following measures:

- Reorient or relocate the receiving antenna.
- Increase the separation between the equipment and receiver.
- Connecting the equipment to a socket on a circuit different from that to which the receiver is connected.
- Contact with the provider or a radio or TV technician for help.

Specific absorption rate (SAR):

This Tablet PC meets the government's requirements for exposure to radio waves. The guidelines are based on standards developed by independent scientific organizations through periodic and thorough evaluation of scientific studies. The standards include a margin of safety designed to ensure the safety of all people regardless of their age or health.

The FCC Statement of Exposure to RF and the SAR limit for the United States (FCC) is 1.6 W/kg average for each gram of tissue. This device was tested for typical operations of use on the body, with the back of the Tablet PC at 0mm from the body. To maintain compliance with FCC RF exposure requirements, use accessories that maintain a distance of 0mm between the user's body and the back of the Tablet PC. The use of belt clips, covers and similar accessories must not contain metallic components in their assembly. The use of accessories that do not meet these requirements may not meet FCC RF exposure requirements and should be avoided.

Functioning in the body

This device was tested for typical operations of use in the body. To comply with RF exposure requirements, a minimum separation distance of 0mm must be maintained between the user's body and the telephone, including the antenna. Third-party accessories such as belt clips, covers and similar accessories used with this device should not contain metallic components, accessories that do not meet these RF exposure requirements and should be avoided from use on the body. Use only the supplied antenna or an approved antenna.

Notes

[illegible]

Need more information?

We hope that this user guide has given you the assistance needed for a simple set-up.

For the most up-to-date guide for your product, as well as any additional assistance you may require, head online to contact us.
www.azeyou.com

