

## Reference for Wireless Quick Charger instructions

### Product Description:

Wireless Quick Charger is a wireless charging transmitter, compatible with WPC Qi-1.24 latest standards, supports All coils, supports Huawei phone, Xiaomi phone, iphone (model 12 and above), iPhone XR, tablet charging.

The internal integrated chip STI3470 (Optional), 9240 QFN19L, SC5001 detects a wireless receiver by Analog Detection receiver using an internal analog op amp and establishes communication with the receiver, then the power transmission begins.

9240 QFN19L AND SC5001 decode the communication packets sent from the receiver, then use the PID algorithm to change the oscillation frequency to adjust the output power on the coil.

Terminate the power transmission once the battery on the receiver is charged.

The full-bridge drive circuit and full-bridge power MOS, voltage & current ASK communication demodulation module are integrated.

### Installation instructions:

- 1.The utility model is put into the inner hole of the shell of the terminal machine, and the shell with one side of the indicator light is exposed.
- 2.Lock the bracket and the product with screws.
- 3.The bracket is then locked into the screws inside the terminal unit.
- 4.Male and female plug in DC power supply, wireless quick charge products can be used normally.

### Product parameters:

Brand: 

Model: HIP-D05AR-F1 , HIP-D10AR-F1

Enter : HIP-D05AR-F1 Input Voltage: 5V $\text{---}$ 2A, HIP-D10AR-F1 Input Voltage: 9V-15V $\text{---}$ 2A

Output : HIP-D05AR-F1 output: 5W, HIP-D10AR-F1 output: 10W

Operation frequency: 110K-205K Hz

Max temperature: -20° C--+45° C.

$\text{---}$  The symbol indicates DC voltage,

H-field: /

SAR value: /

### LED status indication

**Power on status:** blue light Blinks once, The red light blinks again, then the blue light is always on and goes into standby.

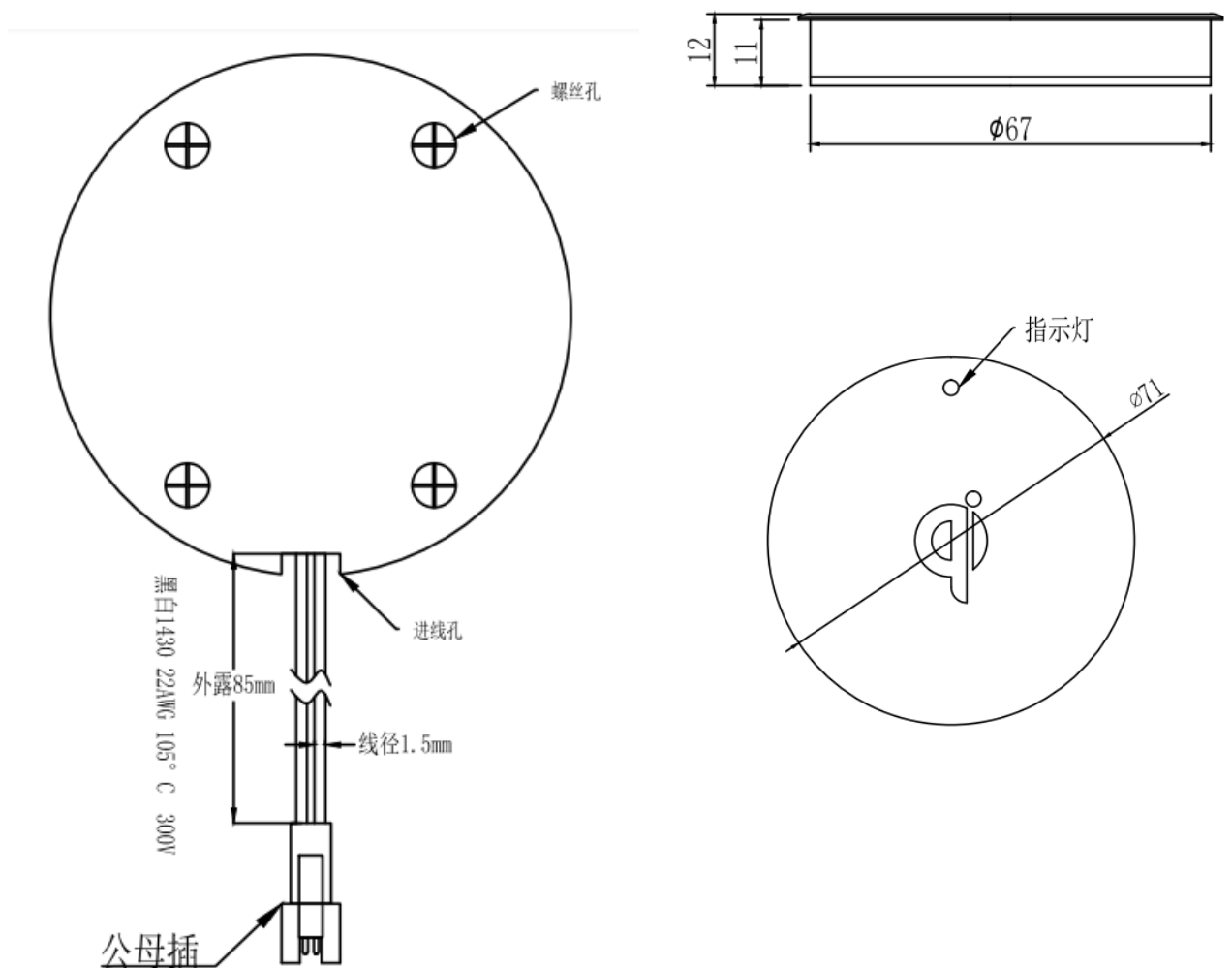
**Standby Status:** blue light is on and the red light is off.

**Charging status:** Red Light always on, blue light off.

**Full status:** Red Light always on, blue light off.

**Foreign body, over temperature, error:** Blue Light, red light flashing at the same time.

### Product Size:



### Installation instructions:

- 1、The device with wireless receiving function is placed in the receiving area;

This device complies with part 15 of the FCC Rules. Operation is subject to the following two conditions:

(1) This device may not cause harmful interference, and (2) this device must accept any interference received, including interference that may cause undesired operation.

Any Changes or modifications not expressly approved by the party responsible for compliance could void the user's authority to operate the equipment.

**Note:** This equipment has been tested and found to comply with the limits for a Class B digital device, pursuant to part 15 of the FCC Rules. These limits are designed to provide reasonable protection against harmful interference in a residential installation. This equipment generates uses and can radiate radio frequency energy and, if not installed and used in accordance with the instructions, may cause harmful interference to radio communications. However, there is no guarantee that interference will not occur in a particular installation. If this equipment does cause harmful interference to radio or television reception, which can be determined by turning the equipment off and on, the user is encouraged to try to correct the interference by one or more of the following measures:

- Reorient or relocate the receiving antenna.
- Increase the separation between the equipment and receiver.
- Connect the equipment into an outlet on a circuit different from that to which the receiver is connected.
- Consult the dealer or an experienced radio/TV technician for help.

This equipment complies with FCC radiation exposure limits set forth for an uncontrolled environment. This equipment should be installed and operated with minimum distance 20cm between the radiator & your body.