

DRAFT

CONFIDENTIAL

In order to make sure that LittleBird technology offers a valuable experience for all customers and users, all hardware associated with LittleBird features must be installed carefully and accurately. This document outlines the installation steps required to properly install a LittleBird Video Intercom system. The following steps should be precisely followed by a qualified technician to ensure system functionality and user safety. All local and national electric codes should be followed as these steps are completed.



For additional product information, please visit partner-support.golittlebird.com

This device complies with part 15 of the FCC Rules. Operation is subject to the following two conditions: (1) This device may not cause harmful interference, and (2) this device must accept any interference received, including interference that may cause undesired operation.

Changes or modifications not expressly approved by the manufacturer could void the user's authority to operate the equipment

Note:

This equipment has been tested and found to comply with the limits for a Class A digital device, pursuant to part 15 of the FCC Rules. These limits are designed to provide reasonable protection against harmful interference when the equipment is operated in a commercial environment. This equipment generates, uses, and can radiate radio frequency energy and, if not installed and used in accordance with the instruction manual, may cause harmful interference to radio communications. Operation of this equipment in a residential area is likely to cause harmful interference in which case the user will be required to correct the interference at his own expense.

This product has been found to be compliant to the requirements set forth in CFR 47 Section 1.1307 addressing RF Exposure from radio frequency devices, as defined in Evaluating Compliance with FCC Guidelines for Human Exposure to Radio Frequency Electromagnetic Fields. This device must be installed and operated so as to maintain a minimum separation distance to any person of 20 cm (8.7 inches).

Before you begin

Each video intercom system requires the following wiring:

- **16/2** or **18/2** for power. Use the table below for recommended maximum distances for the power wires.

Wire Gauge	Max Distance
14	275 ft
16	175 ft
18	100 ft

- **22/6 Shielded** for Wiegand or relays. The maximum recommended distance is 300ft. The system includes two Form C relays, rated for 4A at 30V each.
- One CAT 5e or CAT 6 for wired ethernet
- Earth Ground for surge damage protection
 - 16 AWG stranded wire or thicker and the length of wire should not exceed 50 feet.
 - Wire must be connected from the bottom left corner of the main motherboard inside the Video Intercom to a ground rod or cold water pipe.

<diagram 1>

What's included

Each of your Video Intercom installation packages will include the following essential tools:

Quantity	Item
1	Mounting template
4	Concrete Anchors
4	Lag Bolts $\frac{1}{4}$ x 2"
1	MGT-2450 AC Transformer
1	Microfiber Cloth (Yellow)
2	Security Key
1	Quick Start Guide

What you'll need

Proper installation of your Video Intercom unit requires the following tools. Be sure to have them available before you begin the installation process.

- Electric drill/ Hammer drill *
- 5/32 drill bit for wood *
- $\frac{3}{8}$ concrete bit *
- $\frac{7}{16}$ inch socket w/ ratchet
- Philips screw driver
- Level
- Pencil

** The use of this item depends on the mounting surface you're working with.*

Installation Instructions

We recommend that you have an additional member of your team assist you during this installation process.

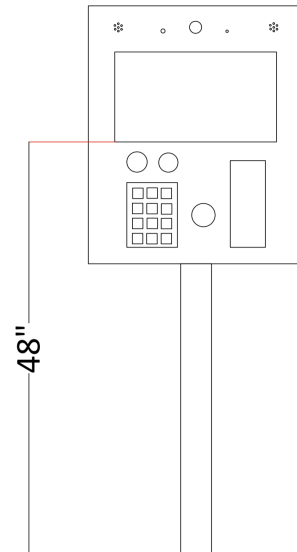
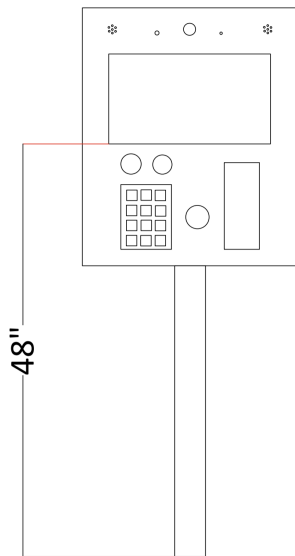
Note: When locking and unlocking the Video Intercom unit, press the faceplate inward to compress the seal and then turn the lock. This will alleviate any pressure on the lock and allow the lock to spin with less resistance.

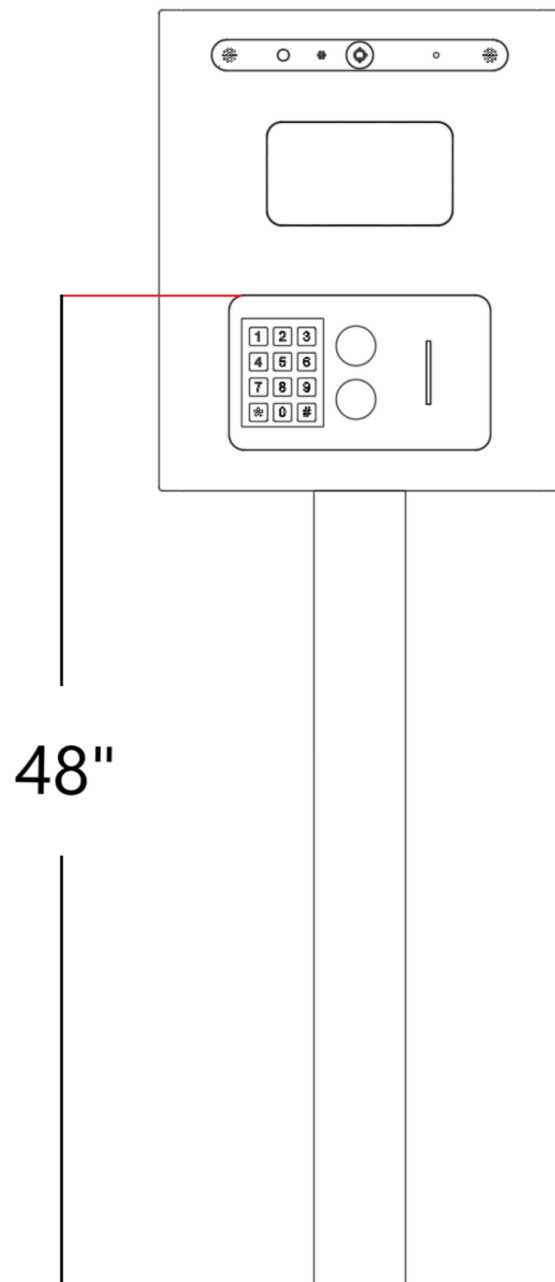
1. Using the included mounting template, mark the video intercom's four mounting holes on your installation area's surface following ADA guidelines.

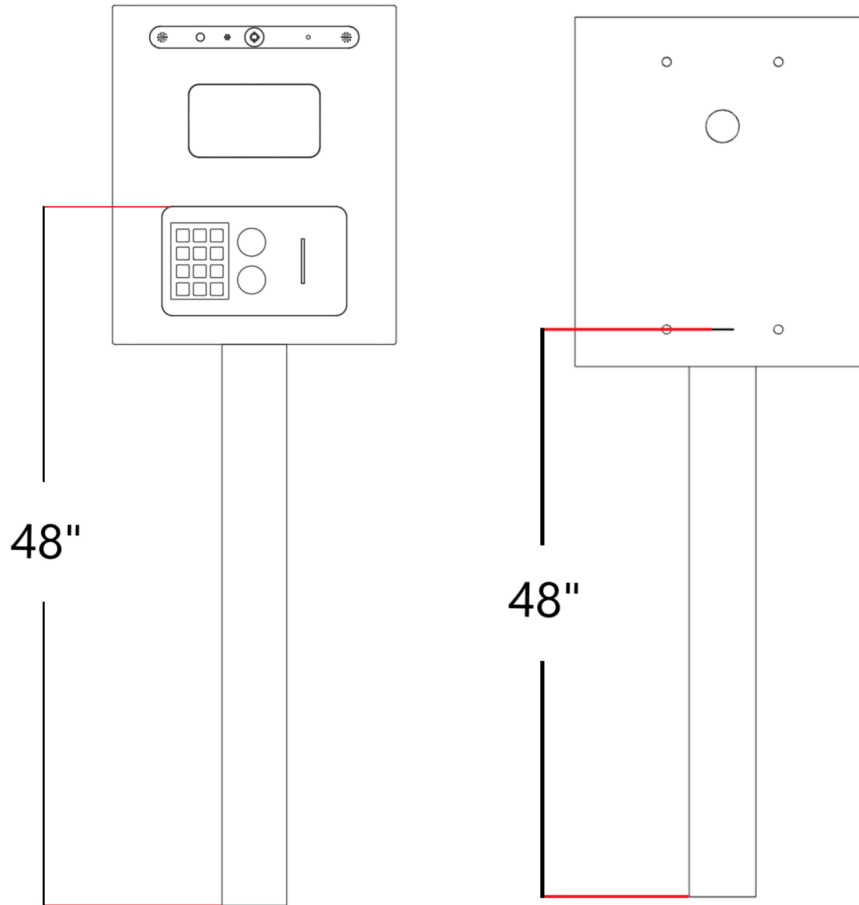
For the LBA-VI-12T model, the bottom two mounting holes should be <inches> from the floor.

For the LBA-VI-10 and LBA-VI-7 models, the bottom two mounting holes should be <inches> from the floor.

<diagram 2> <diagram 3>





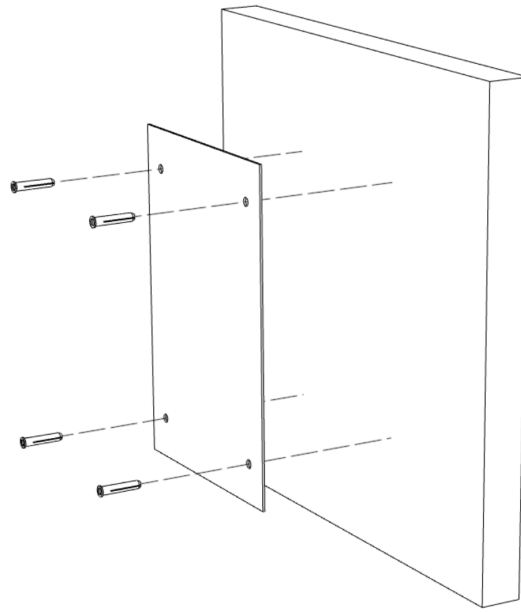


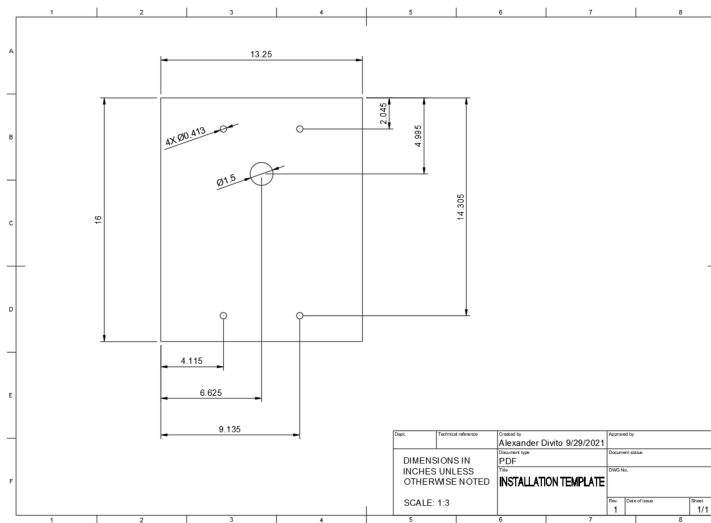
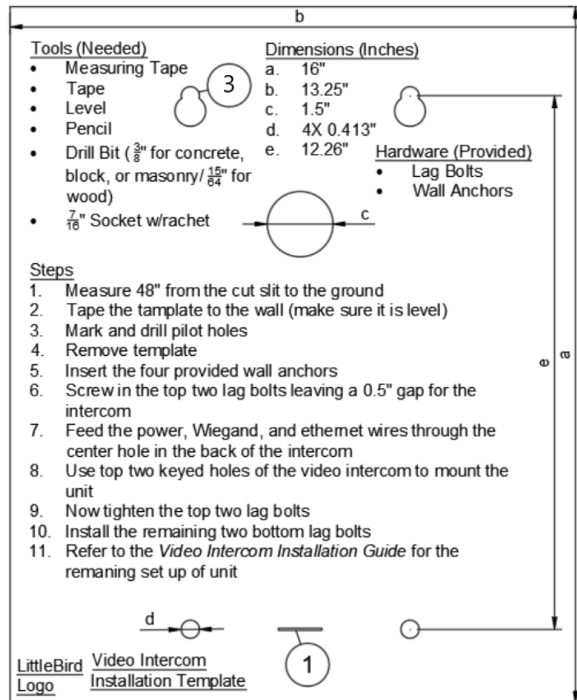
2. Drill the four marked mounting holes.

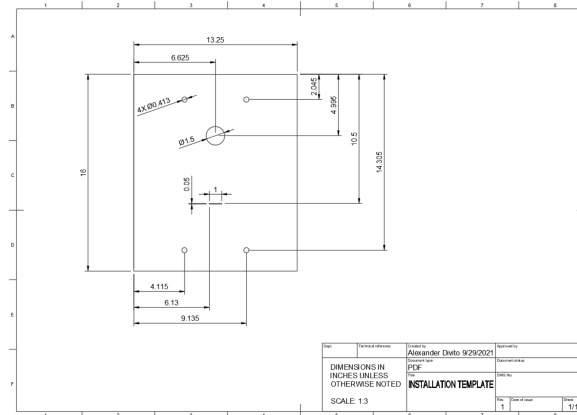
<diagram 4>

Installation Material	Bit size
Wood	15/64"
Concrete, block, or masonry	3/8"

3. Insert the provided wall anchors







Tools (Needed)

- Measuring Tape
- Tape
- Level
- Pencil
- Drill Bit ($\frac{3}{8}$ " for concrete, block, or masonry/ $\frac{3}{16}$ " for wood)
- $\frac{7}{16}$ " Socket w/ratchet

Dimensions (Inches)

- a. 16"
- b. 13.25"
- c. 1.5"
- d. 4X 0.413"
- e. 12.26"

Hardware (Provided)

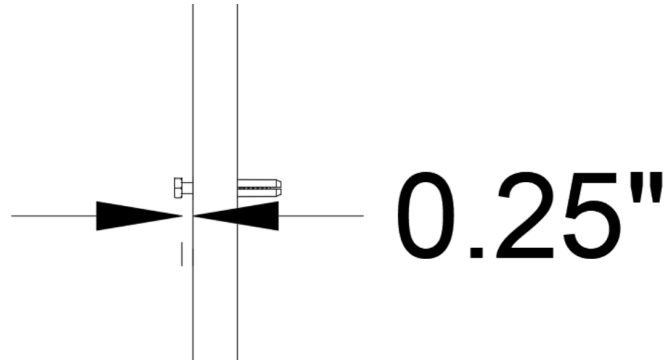
- Lag Bolts
- Wall Anchors

Steps

1. Measure 48" from the cut slit to the ground
2. Tape the tamplate to the wall (make sure it is level)
3. Mark and drill pilot holes
4. Remove template
5. Insert the four provided wall anchors
6. Screw in the top two lag bolts leaving a 0.5" gap for the intercom
7. Feed the power, Wiegand, and ethernet wires through the center hole in the back of the intercom
8. Use top two keyed holes of the video intercom to mount the unit
9. Now tighten the top two lag bolts
10. Install the remaining two bottom lag bolts
11. Refer to the *Video Intercom Installation Guide* for the remaning set up of unit

LittleBird Video Intercom Mounting Template

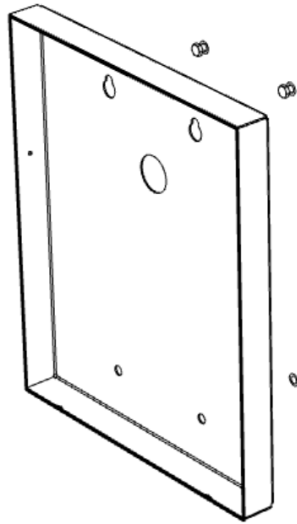
4. Install the top two lag bolts, but don't tighten them all the way, leaving about a 1/2" gap



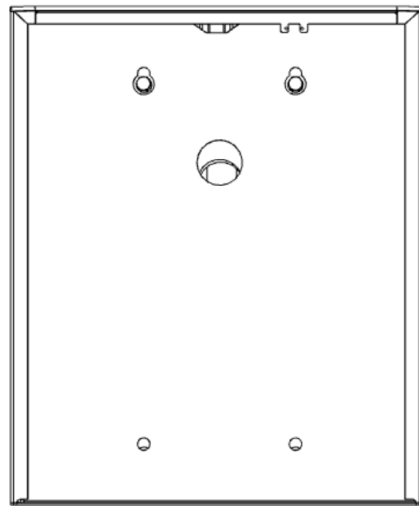
5. Feed the power, Wiegand, and ethernet wires through the center hole in the back of the intercom

<diagram 6>

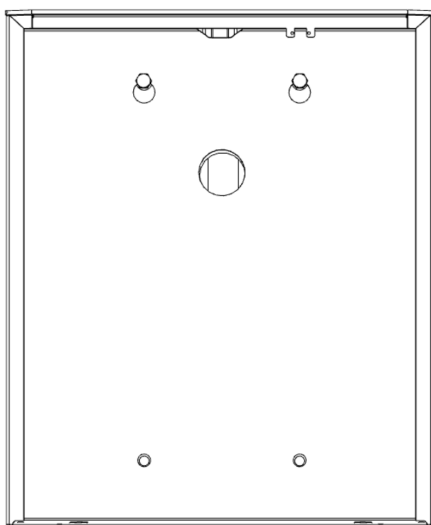
6. Use the top two keyed holes of the video intercom to mount the unit



<diagram 7>

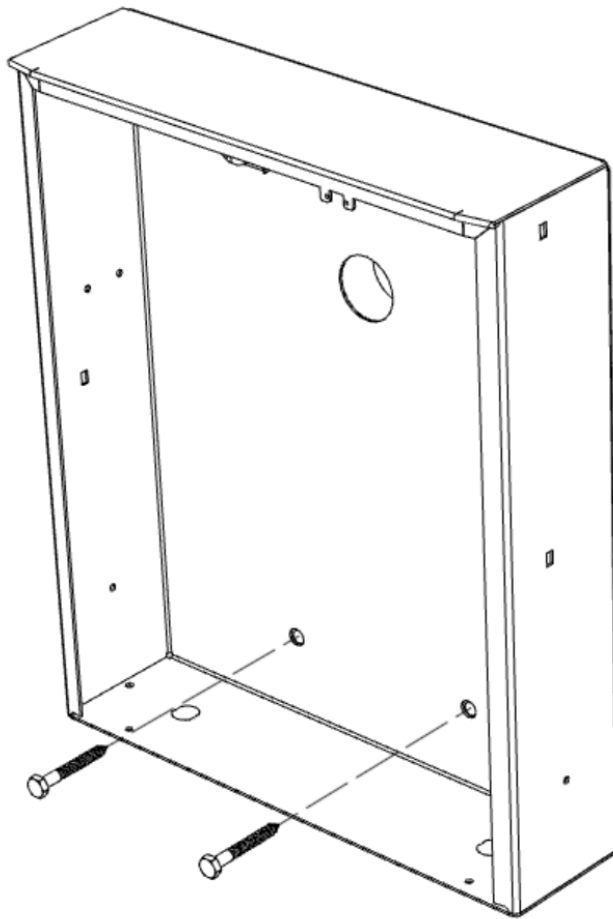


7. Now tighten the top two lag bolts



<diagram 8>

8. Install the remaining two lag bolts



<diagram 9>

9. Plug in the ethernet wire into the ethernet jack on the board

<diagram 10>

10. Plug in the Wiegand or relay wires into the removable terminals on the board

<diagram 11>

11. Insert the two power wires into the AC terminals on the power supply

<diagram 12>

12. At the head end, attach the two power wires to the transformer, using the provided fork terminal connectors

<diagram 13>

13. Plug in the transformer to power up the video intercom unit

<diagram 14>

14. Wait for the video intercom system to boot up. You should see a screen similar to the one below when it's done booting

<diagram 15>

15. Complete the unit's setup with LittleBird Support. To set up this final check, call or email LittleBird Support at **(602)607-4620** or service@golittlebird.com. Please include the site name, Video Intercom serial number, and contact information in the email or voicemail.

Note: If you choose to call and a LittleBird technician isn't immediately available, you'll receive a callback within 8 business hours

16. When the setup is complete, close and lock the lid with the provided keys

Cleaning the Video Intercom

Dust and moisture buildup may necessitate an occasional cleaning of the unit to keep the screen clear and the unit looking nice. Simply use water and the provided microfiber cloth to clean the screen, metal, and plastic.

<diagram 16>