

尺寸:150\*105mm 材质128克 双铜纸 彩色印刷 (光标外为裁切部分)

**DeenSmt**  
Smart Beauty



Instructions

## Product Information

*Please visit our website and social networks  
for more information about our Visual Pore  
Cleaner Device:*

[www.deen-smart.com](http://www.deen-smart.com)

<https://www.facebook.com/deensmt>

[www.instagram.com/deensmt](https://www.instagram.com/deensmt)

## Contact information

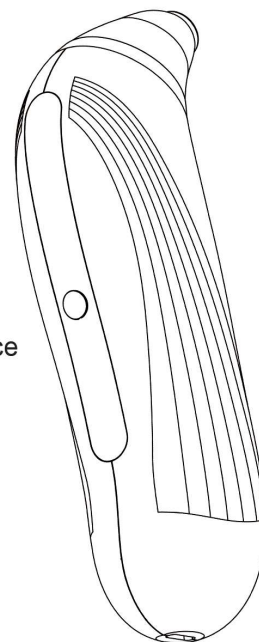
You can also contact us via email  
with any other product inquiry

[support@deen-smart.com](mailto:support@deen-smart.com)

**K20**

# USER MANUAL

Visual Pore Cleaner Device



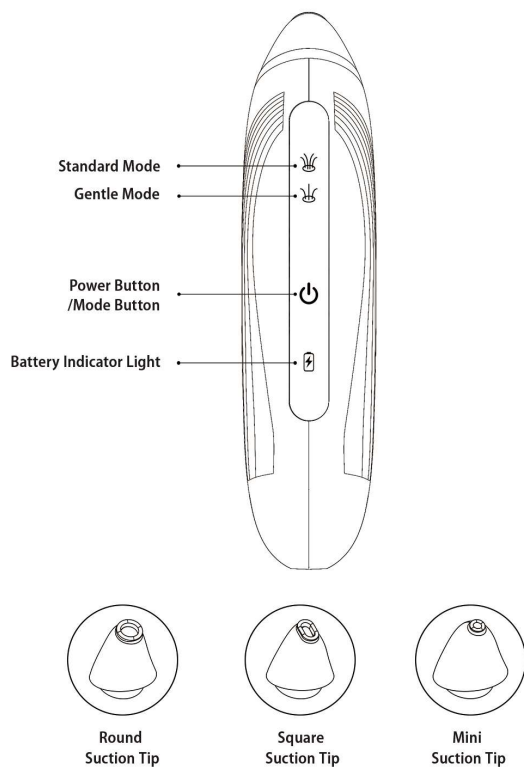
[www.deen-smart.com](http://www.deen-smart.com)

[support@deen-smart.com](mailto:support@deen-smart.com)

封底

封面

## Component Descriptions



1

## Important! Safety Instructions

**To ensure your safety when using this device, please read the “User Manual” carefully before use.**

1. DO NOT STOP during facial one-stroke area cleaning, excessive suction may cause facial skin red and purple.
2. It is recommended to use this device at an environmental temperature between 15°C-30°C.
3. If this device malfunctions during use, please contact us for technical advice or repair service. Do not disassemble or try to repair the visual pore cleaner by yourself.
4. This device is designed for facial pore cleaning and care of adults. Do not use it for any other purpose.
5. Do not use it for infants and children. Do not allow children to play with this device and keep this device out of the reach of children to prevent accident danger.
6. Please adhere to the weekly usage recommendations and the contents of the operating instructions. Shorten the treatment time during your initial use or if you have sensitive skin.
7. Due to the differences in the physique and skin of each person, when you feel any skin abnormality or discomfort during the course of treatment, stop using the device immediately and consult your physician.
8. Do not use it on scarred or fragile skin. This device can not be used on areas of the face that have undergone cosmetic surgery, areas such as the chin, the corners of the mouth, and the area around the eyes, or on skin that has open wounds, pimples, or inflamed acne.

2

9. After using the device, your skin may become red. This is a normal phenomenon, caused by the device's effect on your blood flow. It will disappear naturally after stopping use. You can use the cold compress to soothe and alleviate the redness for comfort.

10. This product is not waterproof, do not wash and soak it in the water, do not allow water or other liquids to seep into the device to prevent the device from being damaged. Ensure that this product is dry when using and use a dry towel or dry cotton tissue to keep the body clean after every use.

11. This appliance can be used by children aged from 8 years and above and persons with reduced physical, sensory or mental capabilities or lack of experience and knowledge if they have been given supervision or instruction concerning use of the appliance in a safe way and understand the hazards involved; children shall not play with the appliance; cleaning and user maintenance shall not be made by children without supervision.

12. This appliance contains batteries that are non replaceable.

13. This appliance contains batteries that are only replaceable by skilled persons.

14. Do not disposal of a battery into fire or a hot oven, or mechanically crushing or cutting of a battery, that can result in an explosion;

15. Do not leaving a battery in an extremely high temperature surrounding environment that can result in an explosion or the leakage of flammable liquid or gas;

16. Do not subjected battery to extremely low air pressure that may result in an explosion or the leakage of flammable liquid or gas;

## About Product

Thank you for purchasing our visual pore cleaner device , now we can enjoy "A Smart Way to Clean Our Facial Pores". By utilizing the vacuum negative pressure technique, it quickly cleans the mixture of excess sebum, aging cuticles and external dirt from pores, effectively restrains the formation of whiteheads and blackheads to avoid the worries of acne skin problems caused by whiteheads. The built-in high-definition visual camera technique lets us clearly observe our facial skin when there is a need. The visual App with video and photo recording function, it can record the blackheads area, making the blackheads cleaning more accurate, more efficient and more assured, to prevent sucking blindly and damage skin accidentally. Keep using this cleaner device for a long-term self-skincare to improve skin texture, to easily say goodbye to oily face, blackheads nose and keep our facial skin healthy and fresh.

**Easy operation thanks to the mobile visualization app, with vacuum negative pressure technique, one-button operation, and convenient USB charging cable.**

## About Features

1. Quickly cleans excess sebum, aging cuticles and external dirt from pores and effectively restrains the formation of whiteheads and blackheads to avoid acne trouble.

2. Use of mobile visualization app, with vacuum suction technique, see an obvious and immediate facial cleaning effect.

3. High-performance microcomputer control system, one-button switch setting and operating, simple and easy to use.
4. Long-life, low-noise quiet pump, more stable suction, an better experience.
5. Ergonomically streamlined body design makes more comfortable use by hand.
6. Convenient USB charging cable.
7. Built-in high-capacity lithium battery, more environmentally friendly and more durable to use.

## Function key Operation

### 1. One Function Button:

ON/OFF " ⬢ " key is a composite button of power and mode switch, freely switch the modes among Gentle Mode, Standard Mode and Standby Mode.

### 2. Instructions of Function Keys:

I. Long press the on/off " ⬢ " button for 2 seconds to turn on and enter the standby mode, and then long-press the button for another 2 seconds to turn off; The power and battery indicator light is on; When each mode ends, the buzzer "prompt tone" sounds once, entering standby mode.

II. After entering the cleaner standby mode, the user opens "DeenSmt" Pore Cleaner APP on the mobile interface ( Please check the methods of download and operation on the right side) When the white light of the lens lights up, start using the visual function of the pore cleaner to check the skin status freely, and you can also use the video or photo function to record one circle " ○ " area of severe blackhead, cleaning one circle area once.

III. In standby mode, we can switch modes freely: the mode sequence is

5

"Gentle Mode", the indicator light " ⬢ " lights up → "Standard Mode", the indicator light " ⬢ " lights up, → "Standby Mode", the power indicator " ⬢ " and " ⬢ " lights up, → Then "Gentle Mode" the indicator light " ⬢ " lights up again, we can select the mode in reciprocating sequence according to needs.

## Operation Time and Frequency of Use

Pore Cleaner has a standby time of 10 minutes; Each cleaning mode is working 5 minutes; To clean the same single-stroke cleaning area, the cleaning frequency should not exceed 3 times at most. The frequency of use is no more than 3 times per week, and it needs to be used every other day. (Use with caution for sensitive skin)

**Note: During each single-stroke cleaning operation of each single-stroke cleaning area, the cleaner can NOT STOP to avoid skin suction hurt.**

## Power Supply Operation

When the battery indicator icon " ⬢ " on the control panel flashes red, the indicator indicates that the battery is low and needs to be charged. Please charge the cleaner by USB charger (USB Standard DC5V), flashing red and white alternately. The white light will stay on when it is fully charged. The charging time is about 3 hours.

**Note: After charging, please cut off the power supply to ensure the battery life and safety of the pore cleaner.**

6

## To Download, Install, and Operate the App

Wi-Fi name to match product: K20

### App Download Steps:

1. iOS 10.0 or above

Scan the QR Code on the right, and click "Download" to get the APK file and install it.



2. Android 5.0 or above and Google Play Scan the QR Code on the right, and click "Download" to get the APK file and install it.

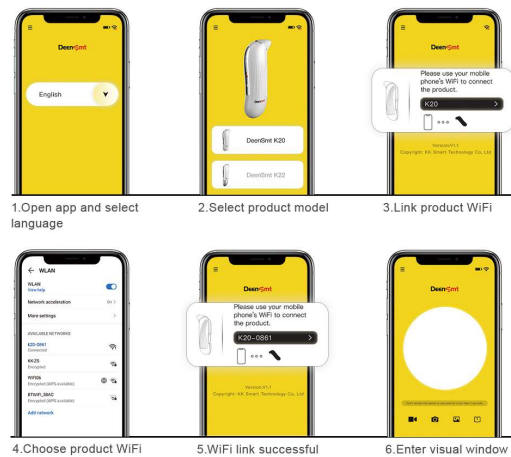


## Use Instructions of DeenSmt App

Ensure that our mobile is connected to the Wi-Fi, keep the cleaner device on the standby mode, and open the APP on the mobile interface, follow the tips to operate it, select a language and the model of this device, it will automatically detect the model number WIFI (K20-\*\*\*\*) on our available network page, choose and connect WIFI (K20-\*\*\*\*) , return to the main page and click WIFI K20, when the lens' white light is up, we can start using the visualization function. Enter the app work "visual window" as shown in the image (1-6).

**NOTICE:** After connected the visual APP, we can check our facial skin state but **DO NOT** use this device directly (avoid hurt skin by the wrong

operation ), it must be used correctly according to following steps of pore cleaner use.



## Steps of Pore Cleaner Use

### Preparation before use:

Pore cleaner, mirror (adjust to an appropriate angle) and mobile phone (keep it stand up). Please adjust the visual distance among the items for easy use.



**Step 1:** Clean our face and start a hot compress.

The way of a hot compress, use an acceptable hot towel covering face for 2-3 times or apply a facial steamer (Not included in the product) for 8-10 minutes to make your facial pores fully opened.



**Step 2:** Use facial DIY mask to soak the

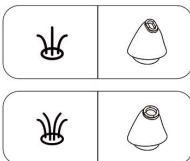
blackhead extraction fluid (Not included in the product) and apply it for 8-10 minutes.



**Step 3:** For first-time users and user with sensitive and delicate skin please choose Gentle

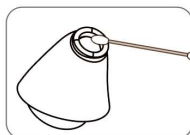
Mode + Square Suction Tip (Mini Suction Tip is suitable for the nostril edge area and single area).

For user who has used pore cleaner expertly, please choose Standard Mode + Round Suction Tip (all kinds of suction tips can be matched freely)



**Step 4:** Clean the lens and tips before use,

please use a cotton swab with alcohol (Not included in the product) to clean the camera lens and tips.



**Step 5:** Each single-stroke cleaning operation is a single-stroke "Press+Fast+Pull" (as shown keeping the starting side of suction tip press on skin and the

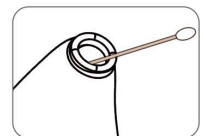
9

other side tilted 30 degrees to

avoid straight sucking to hurt skin ).



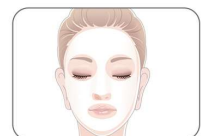
**Step 6:** Clean the suction tip after use, use cotton swab with alcohol (Not included in the product) to disinfect the camera lens and the mixture of excess sebum, aging cuticles, external dirt and mild blackheads. (If necessary, please continue the cleaning on severe blackheads referring to the last supplement.)



**Step 7:** Open the visualization APP (refer to App Operation), turn on the device and enter in Standby Mode, install round suction tip to check your facial skin after cleaning.



**Step 8:** In the last step, use facial DIY mask to soak the blackhead shrink fluid (not included in the product) to shrink pores. Then apply a moisturizing nutrient solution, or use a facial mask to moisturize your face.



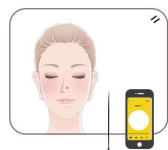
10

## Operation Method for Severe Blackheads:

Please pay attention to the visual order when you use this device, look at the mirror first and then the mobile screen. Please follow the rule, record by video or photo function and meanwhile press one circle "○" mark on severe blackhead area, clean once one circle area. One Circle by One Circle. The circle "○" mark can be remarked when fading and it will disappear naturally afterward. Do not clean the same circle "○" area more than 3 times to avoid skin suction hurt.



**Note: The cleaning of severe blackheads requires long-term use. We suggest focusing only on the obvious blackheads once. In addition, we can use an acne needle (not included in the product) to manually clean all the blackheads on the "○" area on the precondition a mastery of right and proper use of acne needle in advance. Please use facial skin anti-inflammatory ointment or consult a doctor in time when operate improperly.**



## Technical Specifications

Name: Visual Pore Cleaner Device	Model: K20
Overall Dimensions: 135.5x58x33mm	Output: 5W
Main Device Weight: 110g	
Device Suction: 62Kpa	
Power Supply: DC5V/1A	
Internal Lithium Battery: 3.7V/1000mAh	
Environmental Temperature: 15°C-30°C	
Relative Humidity: ≤93%	
Atmospheric Pressure: 50kpa-106kpa	
Material: PC Resin	

## FAQ:

**If this device malfunctions during use, please conduct the troubleshooting below. If you are unable to resolve the issue, please contact us for technical advice or repair service.**

### **Q: Why can't I extract blackheads?**

**A:**The main function of this visual pore cleaner is to eliminate the excess sebum, the mixture of aging cuticles, and external dirt from pores, effectively restrain the formation of whiteheads and blackheads, which cause acne troubles to us. For the formed severe blackheads long time ago, can be divided into mild and severe blackheads according to the formation cycle. Please read "Operation for Severe Blackheads" and follow the procedure to clean the blackheads gradually.

**Q: Why does the vacuum leave red marks (or purple marks)?**

**A:** Because the skin is being acted on by the vacuum suction, this can cause the skin feeling yanked, and extracting the blackheads, it will be slightly flushed. This is a normal phenomenon and it will disappear naturally. DO NOT stay this device in one place during the cleaning to avoid direct suction of hurting skin , and do not use it more than three times repeatedly on one place of face. The red or purple marks are caused by incorrect use, please strictly follow the instructions in the user manual.

**Q: How often should I use it?**

**A:** Under normal conditions:

1. Using device for facial pore cleaning is dependent on the user's skin condition. It is recommended that users with sensitive and dry skin undergo treatment once per week, and users with oily or combination skin undergo treatment twice per week. Due to the differences in the physique and skin of each person, when you feel any skin abnormality or discomfort during the course of treatment, stop using the device immediately and consult your physician.

**Q: Why can't I connect to the mobile app?**

**A:** Make sure that your mobile device's Wi-Fi is turned on, and once it's turned on; choose to connect to the product's Wi-Fi (the product's model number is its Wi-Fi name). After opening the connection, the interface's Wi-Fi icon will be normal. At this time, the mobile device is communicating successfully with the product, and they can be used normally. If an "x" appears, the connection was unsuccessful. Please retry the previous step. Additionally, please turn off the Wifi and turn it on again, and then connect to use it.

**Q: Why is the app crashing?**

**A:** Crashes could be due to the product's battery level being too low, or the user's mobile device may not have given the app the permissions needed to run. If the product battery level is normal, please uninstall the app, including

all residual data, then re-install the app, tap the launch icon to open it, and grant it the relevant permissions requested by the dialogue box.

**※Attention: Do not attempt to disassemble or repair this product on your own.**

## Care and Maintenance

Ensure that this device is turned off before cleaning. Clean the device camera lens and tips with alcohol immediately after every use and clean the device body by using a dry towel or cotton tissue. After cleaning, please store it in a cool and dry place. Should this device malfunction, do not disassemble it, please contact the manufacturer to arrange for professional repairing. This product is not waterproof, do not wash and soak it in the water, do not allow water or any other liquids to seep into the device to prevent the device from being damaged.

**※Do not submerge this product in water.**

## DEEN SMART Warranty

1. Guarantee: If the product is under normal use and maintenance (follow the manual instructions), due to material, workmanship or manufacturing problems resulting in performance failure, during the warranty period, we will provide you with a replacement service and will not charge you for the warranty service. If the reseller has an additional promise to you, you should ask the reseller to honor it, and Deen Smart is not responsible for this.
2. Warranty Period: It's one year from the purchase date of the product (subject to the invoice date of the purchase of the product).
3. Warranty Claim Process: Customer must fill in the forms (provided by Deen Smart Service Team ) with a detailed description of the issue and sufficient proof of purchase (the order number from our authorized resellers, pictures, and videos of the defective product ) We will verify and reply you shortly. All unauthorized returns will be rejected.
4. Note: It will be necessary to return a defective product for quality inspection before Deen Smart releases a product replacement.
5. Not Covered Under Warranty:
  - Purchases from unauthorized retailers or lost products.
  - Products without sufficient proof of purchase.
  - Items that have expired their warranty period.
  - Non-quality related issues.
  - Free products.
  - Repairs through 3rd parties.
  - Damage from misuse of products (including, but not limited to: falls, operating devices improperly).
  - Failure or damage caused by force majeure or unexpected events.
  - Product rupture, rust and damage caused by contact or exposure to

improper temperature, solvents, acids and alkalis, prolonged immersion in water or foreign matter intrusion, etc.

## FCC Warning

This equipment has been tested and found to comply with the limits for a Class B digital device, pursuant to part 15 of the FCC Rules. These limits are designed to provide reasonable protection against harmful interference in a residential installation. This equipment generates, uses and can radiate radio frequency energy and, if not installed and used in accordance with the instructions, may cause harmful interference to radio communications. However, there is no guarantee that interference will not occur in a particular installation. If this equipment does cause harmful interference to radio or television reception, which can be determined by turning the equipment off and on, the user is encouraged to try to correct the interference by one or more of the following measures:

- Reorient or relocate the receiving antenna.
- Increase the separation between the equipment and receiver.
- Connect the equipment into an outlet on a circuit different from that to which the receiver is connected.
- Consult the dealer or an experienced radio/TV technician for help.

Caution: Any changes or modifications to this device not explicitly approved by manufacturer could void your authority to operate this equipment.

This device complies with part 15 of the FCC Rules. Operation is subject to the following two conditions: (1) This device may not cause harmful interference, and (2) this device must accept any interference received, including interference that may cause undesired operation.

RF Exposure Information  
The device has been evaluated to meet general RF exposure requirement. The device can be used in portable exposure condition without restriction.