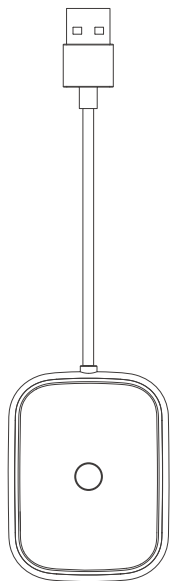


# WIRELESS CAR ADAPTER Manual



Model AF1313  
User manual

## Product Specifications:

- Voltage : 5V
- Current : 1A
- Operating temperature : -20° to 75°C
- Storage temperature : -25° to 75°C

**Supported Devices:** iPhone 6 or newer, or Android 11 smartphones

## Features:

1. Converts wired CarPlay in your original car to wireless CarPlay.
2. Converts wired Android Auto in your original car to wireless Android Auto.

## Bluetooth & WiFi Information:

- Name: DrivePlay-XXXX
- WiFi Password: 88888888

## Online Update:

Only iPhone updates are supported. Please connect your iPhone to the adapter's WiFi and enter 192.168.31.1 in the iPhone's Safari. Locate and download the latest software. On the update page, you can choose the connection mode: **Direct Connection without UI Interference** or **Connection with UI**. Do not power off during the update process.

## Indicator Light Status:

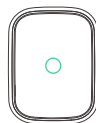
Indicator Light after Adapter is Powered On: Normally, the indicator light flashes once per second.

During Bluetooth Pairing: The indicator light flashes rapidly.

**NOTE:** The adapter defaults to CarPlay mode.

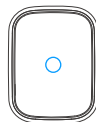
- 1: Long press and hold the button for 3 seconds to switch modes
- 2: Press the button three times in a row within 3 seconds to turn off CarPlay or AndroidAuto, and the indicator light will remain on. On this basis, press it three times in a row to open CarPlay or AndroidAuto, and the indicator light will flash

## CarPlay Mode:



- Indicator Light Color: Green
- Indicator Light Frequency: Flashes once per second
- Supported Device: iPhone (supports only CarPlay)

## Android Auto Mode:



- Indicator Light Color: Blue
- Indicator Light Frequency: Flashes once per second
- Supported Device: Android phone (supports only Android Auto)

## Switching Between Dual Modes

1. The adapter defaults to CarPlay mode. To use Android Auto, press and hold the adapter button for 3 seconds. The indicator light will change from green to blue.
2. If you are currently in Android Auto mode and wish to switch to CarPlay, press and hold the adapter button for 3 seconds. The indicator light will change from blue to green.

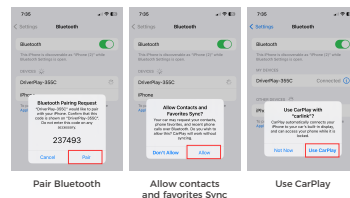
## Wireless CarPlay usage method:

### Direct Connection without UI (Default Connection Mode)

1: Insert this product into the car's original USB or TYPE-C port that supports data transfer. If the indicator is Green and light flashes normally, please connect your iPhone to the adapter's Bluetooth named DrivePlay-XXXX.

### Direct Connection with UI

1: Plug this product into the original car's usb port and wait for the display of the car UI interface. After the UI interface comes out, please use the iPhone to connect to the Bluetooth name on the interface, and at the same time realize the function of the product under the prompt and guidance of the mobile phone.



## Notice:

1. Before connecting, ensure that your iPhone's Bluetooth and WiFi are not connected to other devices. If they are, disconnect from those devices on your iPhone. Before switching to a different iPhone, turn off the Bluetooth and WiFi on the iPhone currently connected to the adapter.

2. If the connection fails or does not reconnect automatically, please restart your iPhone or unplug and replug the adapter.
3. If your iPhone's WiFi and Bluetooth are connected to other devices, please forget the other devices' Bluetooth and WiFi on your iPhone, and connect to adapter's Bluetooth and WiFi. If unable to connect, forget the adapter's Bluetooth name, turn off Bluetooth for 5 seconds, then reconnect.
4. Any network data (including content such as audio, video, maps, and calls) generated by this function is not associated with this product.
5. To disable CarPlay, disconnect the device's Bluetooth and WiFi on your iPhone, or unplug the adapter.
6. Once the wireless CarPlay is connected, only the WiFi signal transmission will be maintained; the iPhone's Bluetooth will disconnect from the adapter.

## Wireless Android Auto usage method:

### Set up your device



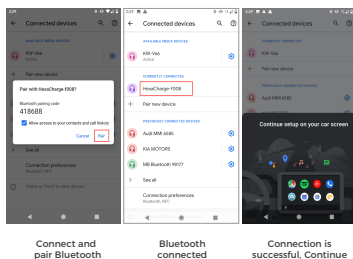
Before connecting the adapter, please use a android-phone that supports the Android Auto function to connect to the wired AndroidAuto function of the car

head unit to ensure that the wired Android Auto function can be used normally. If the

wired AndroidAuto does not work properly, please set it up through the setting process. If the original car does not have a wired Android Auto function, the product cannot be used.

#### Connect the adapter

Plug the adapter into the original car's USB or TYPE-C port. Ensure that the adapter's indicator light is blue and flashes once per second, search and pair the adapter's Bluetooth in the Bluetooth list of the Android phone, and the Bluetooth name is DrivePlay-xxxx. After successful pairing, the Android Auto continuation page will appear on the phone. Please click the AndroidAuto icon of the original car to enter the wireless AndroidAuto function.



#### Note:

When the car head unit has Mirrorlink such as Volkswagen, Peugeot, Citroën models, etc., please do not click the mirrorlink function during the connection process, just click the Android Auto icon.

1. Check for and upgrade any updates to Android Auto on your android phone through the Google Play app store.

2. Check and make sure the Wireless Android Auto feature is enabled in the Android Auto settings on your Android phone. (Open the Android Auto app, pull to the bottom where there is a version information, click 10 times in a row to enter the developer option. Click on the three dots ( ) in the upper right corner and select wireless Android Auto)

3. First, pair your phone's Bluetooth with the car stereo. Make sure your phone is connected to the car for hands-free calling (Bluetooth HFP). You can simply make or receive a call to confirm that your phone is connected to the car for hands-free calling (Bluetooth HFP). A properly handled Bluetooth HFP call will use the car's own speakers and microphone.

4. Before connecting with a different mobile phone, please turn off the Bluetooth and WiFi of the mobile phone that has previously connected to the adapter, or enable airplane mode.

5. If you need to turn off the Wireless Android Auto function, you need to turn off the Bluetooth and WiFi of the adapter on the mobile phone, or unplug the adapter.

6. Once the wireless Android Auto is connected, only the WiFi signal transmission will be maintained; the phone's Bluetooth will disconnect from the adapter.

7. If you have inserted the adapter and successfully connected to the adapter's Bluetooth, but the Android Auto continuation interface has not appeared on the car head unit or the mobile phone, please seek help in "If you can't connect again, please try the following" in the troubleshooting. If you

still cannot connect after this method, it means that this device does not support your car model.

8. The content (including fonts, music, audio, maps, lyrics, touch, calls, etc.) generated by this Wireless Android Auto function has nothing to do with this product.

9. If there is a connection problem, restart the car or restore the car to factory Settings.

10. When you start the car again, the Wireless Android Auto function may not be enabled automatically. You can reconnect by re-pairing the Bluetooth or unplugging and plugging in the adapter.

11. The adapter supports most Android phone brands and models.

12. You can visit the Android Auto website: <https://android.com/auto>

13. Before using, please disconnect the VPN.

Based on the differences in region, car model, phone brand, model, and function, it may not automatically connect next time before the next connection. At this time, please delete the Bluetooth pairing information, or re-plug the adapter, or refer to "If you can't connect again, please try the following" for solutions.

#### If you can't connect again, please try the following

1. Make sure the Android Auto app on your phone is updated to the latest version in the Google Play Store.
2. Just make or receive a phone call to confirm that your phone is connected to the car for hands-free calling (Bluetooth

HFP). Correctly handled Bluetooth HFP calls will use the car's own speakers and microphones.

3. Please restart your phone, unplug/replug the adapter, and then restart the car's infotainment system.

4. On the car screen, find the Bluetooth phone list, and then "forget" or "delete" all paired phones.

5. On the phone, find the system settings for Bluetooth, and then "forget" or "delete" the paired car and the paired DrivePlay-XXXX

6. On the phone, find the system settings for the application; select Android Auto; under "Storage", tap "Clear data" (this may vary slightly depending on the phone brand).

7. Plug in the data cable again and use wired Android Auto to make sure wired Android Auto can connect normally.

8. If wired Android Auto can connect normally, then reinsert the adapter and reconnect Bluetooth.

9. If wired Android cannot connect normally, please follow the above (1) (2) (3) (4).

#### U.S Compliance

Hereby declare that this wireless device complies with the requirements in Part 15 of the US FCC Rules.

Complies with the specifications in Part 15 of the FCC Rules. The operating device complies with the following two conditions: (1) This device should be located 20 cm away from everyone. (2) It

must not be operated in the same location as other antennas or transmitters. The certificate of conformity and test report have been stored in the official FCC database.

This device has shown compliance, in all grant-listed U-NII sub-bands, with the new rules for U-NII devices adopted under Docket NO.13-49 and maybe marketed, manufactured or imported after the June 1, 2016 transition deadline.

This device is certified pursuant to two different Part 15 rules sections.

#### EU Compliance

Hereby declare that this wireless device complies with the specifications of Article 3 of Directive 2014/53/EU.

#### RoHS Compliance

Hereby declare that this product complies with the electrical specification requirements of RoHS Directive 2011/65/EU and Commission Delegated Directive (EU) 2015/863 as amended.



This symbol indicates that this product shall not be treated as household waste. Instead it shall be handed over to the applicable collection point for the recycling of electrical and electronic equipment.

<p><b>FCC Statement</b></p> <p>This device complies with part 15 of the FCC Rules. Operation is subject to the following two conditions: (1) This device may not cause harmful interference, and (2) this device must accept any interference received, including interference that may cause undesired operation.</p> <p>Note: This equipment has been tested and found to comply with the limits for a Class B digital device, pursuant to part 15 of the FCC Rules. These limits are designed to provide reasonable protection against harmful interference in a residential installation.</p> <p>This equipment generates, uses and can radiate radio frequency energy and, if not installed and used in accordance with the instructions, may cause harmful interference to radio communications. However, there is no guarantee that interference will not occur in a particular installation. If this equipment does cause harmful interference to radio or television reception, which can be determined by turning the equipment off and on, the user is encouraged to try to correct the interference by one or more of the following measures:</p> <ul style="list-style-type: none"> <li>-Reorient or relocate the receiving antenna.</li> <li>-Increase the separation between the equipment and receiver.</li> <li>-Connect the equipment into an outlet on a circuit different from that to which the receiver is connected.</li> <li>-Consult the dealer or an experienced radio/TV technician for help.</li> </ul> <p>Note: The Grantee is not responsible for any changes or modifications not expressly approved by the party responsible for compliance. such modifications could void the user's authority to operate the equipment.</p>	<p>The device has been evaluated to meet general RF exposure requirement.</p> <p>To maintain compliance with FCC's RF exposure guidelines, the distance must be at least 20 cm between the radiator and your body, and fully supported by the operating and installation configurations of the transmitter and its antenna(s).</p>			
---	--	--	--	--