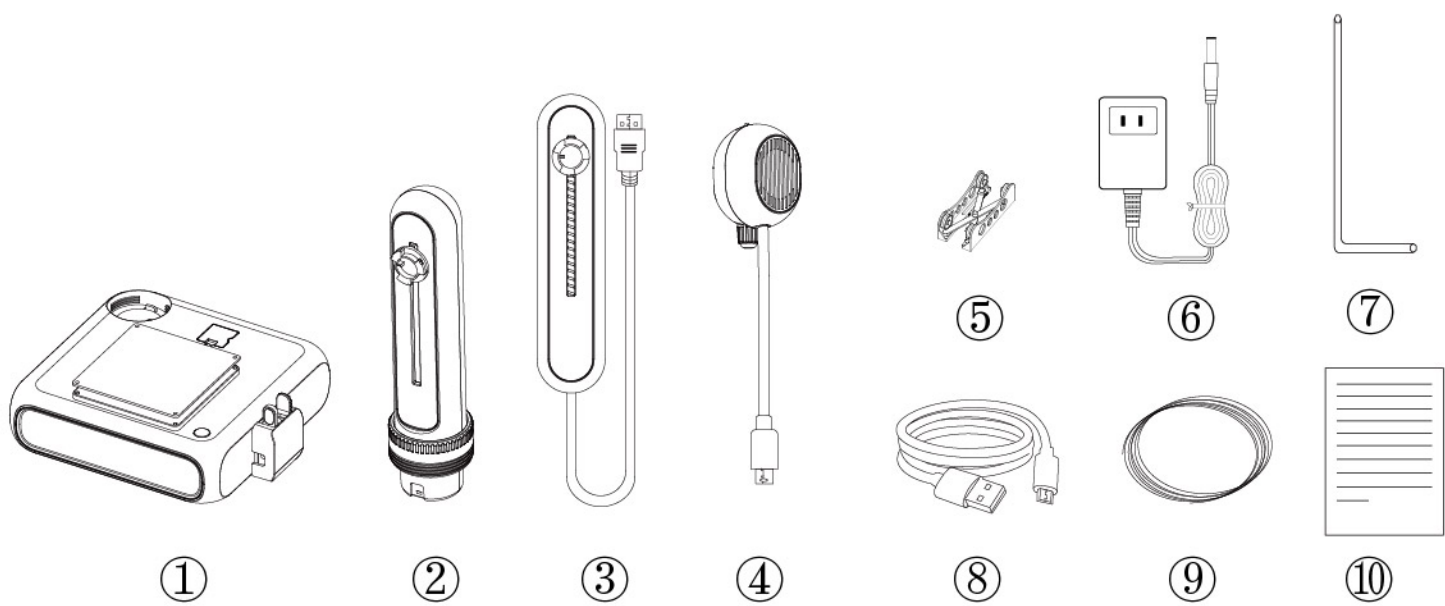
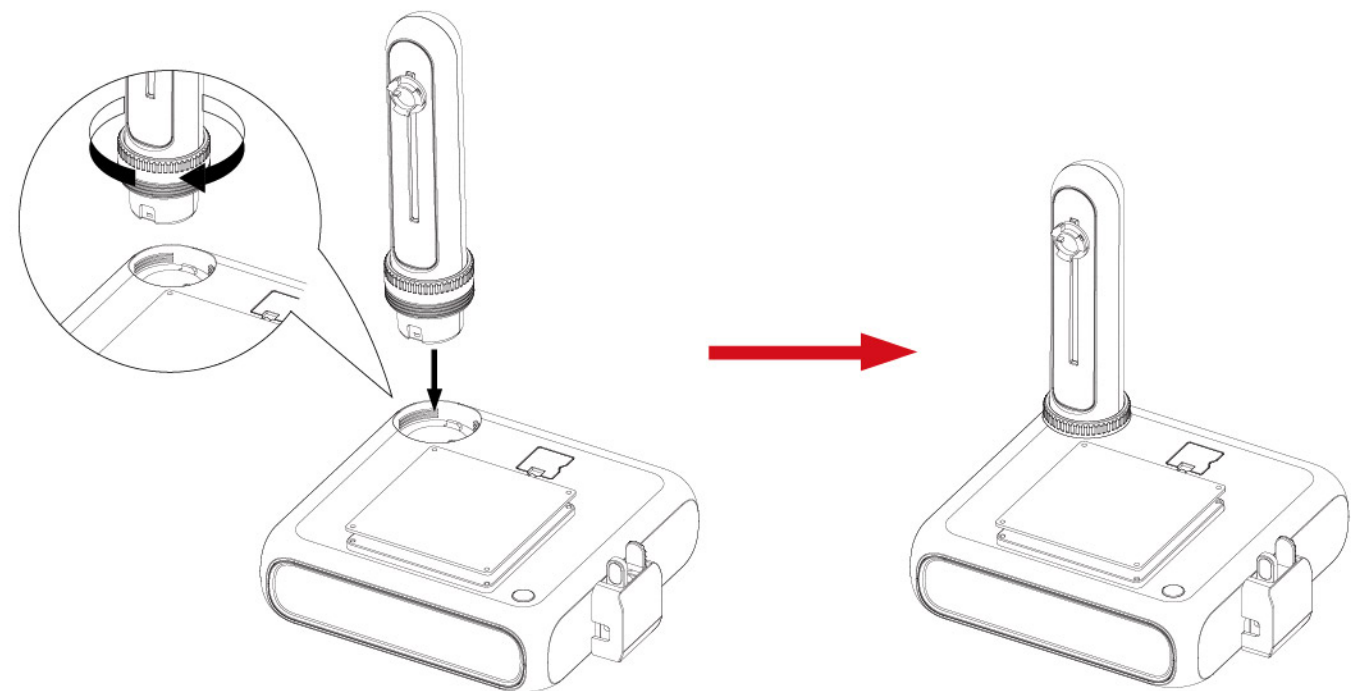


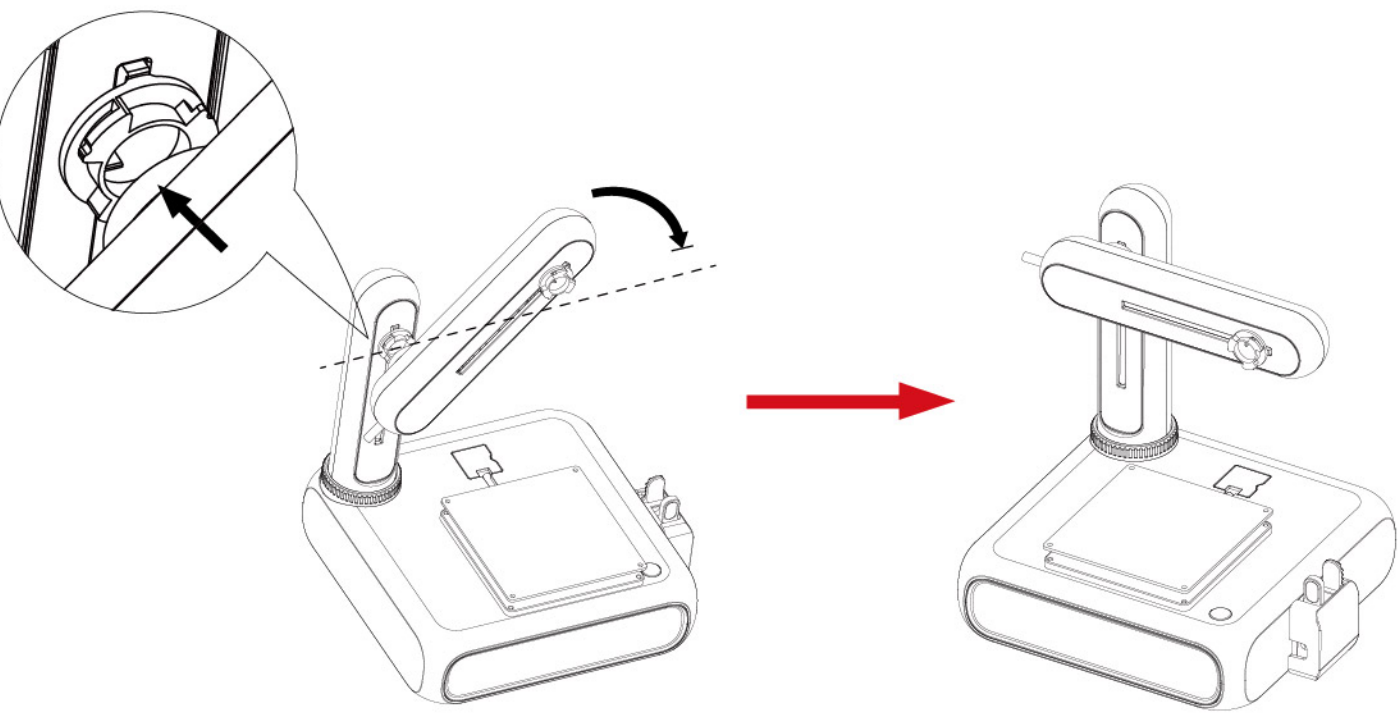
User Manual



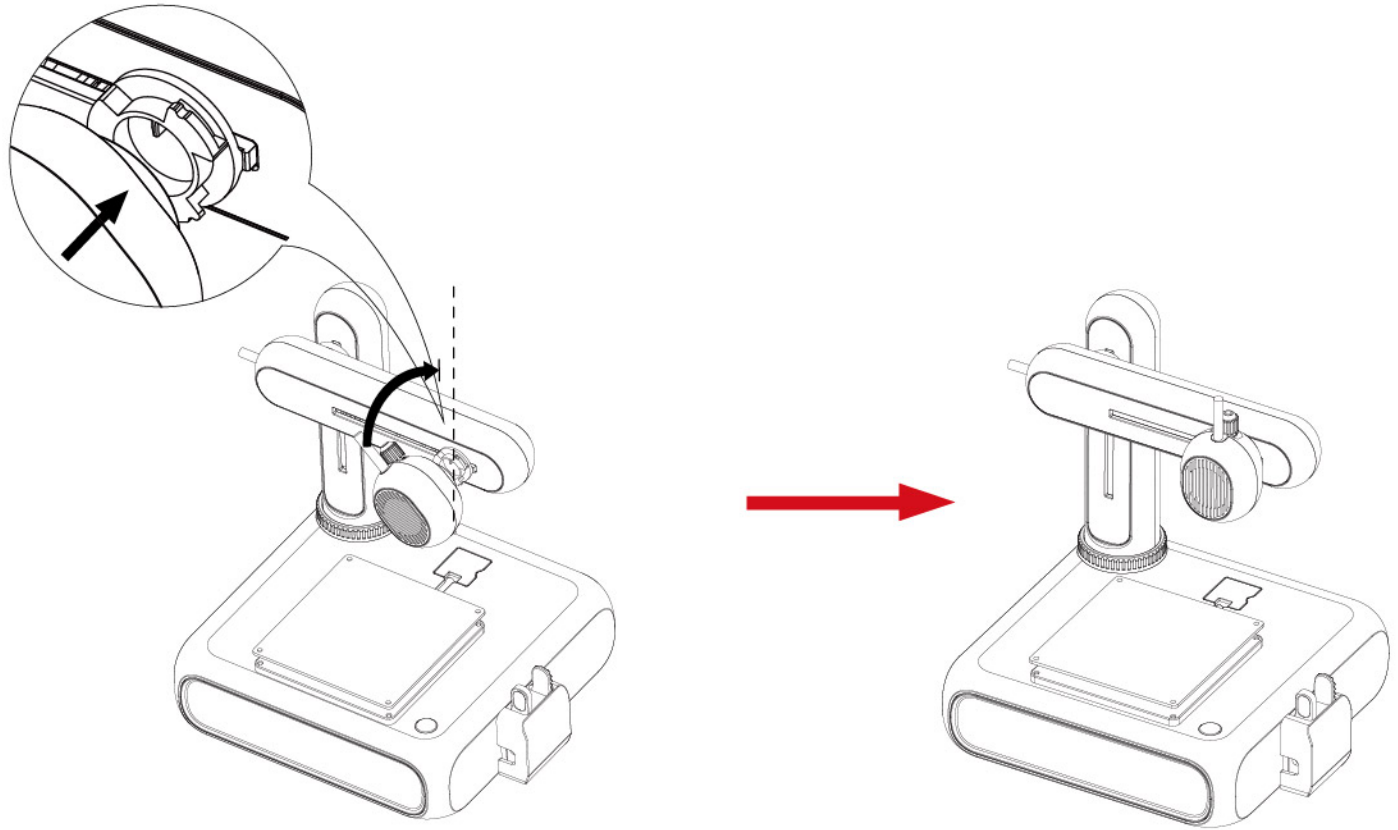
1



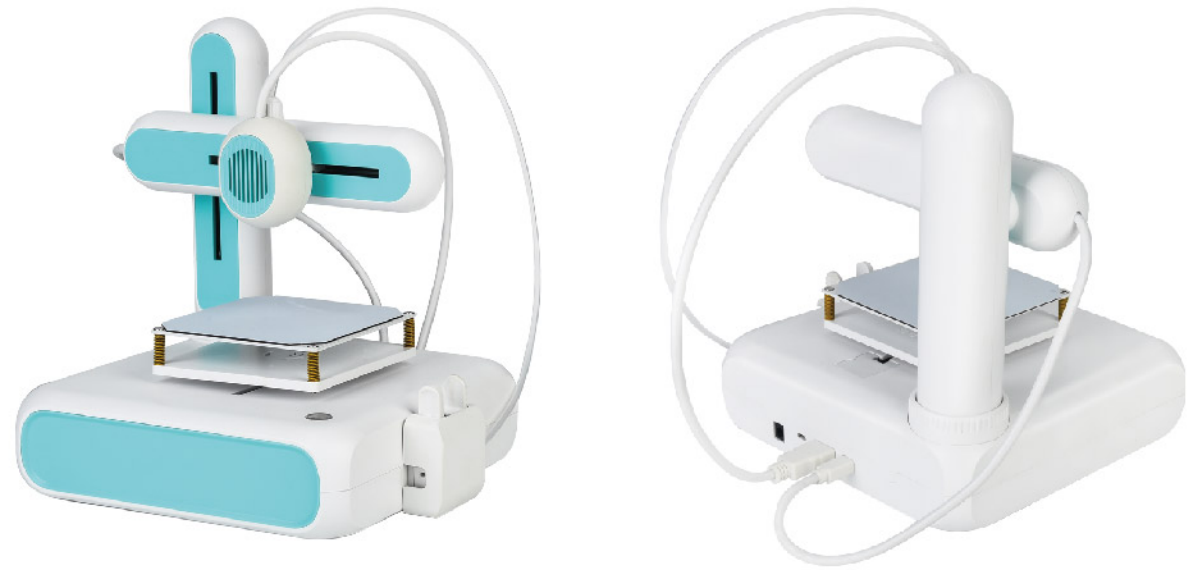
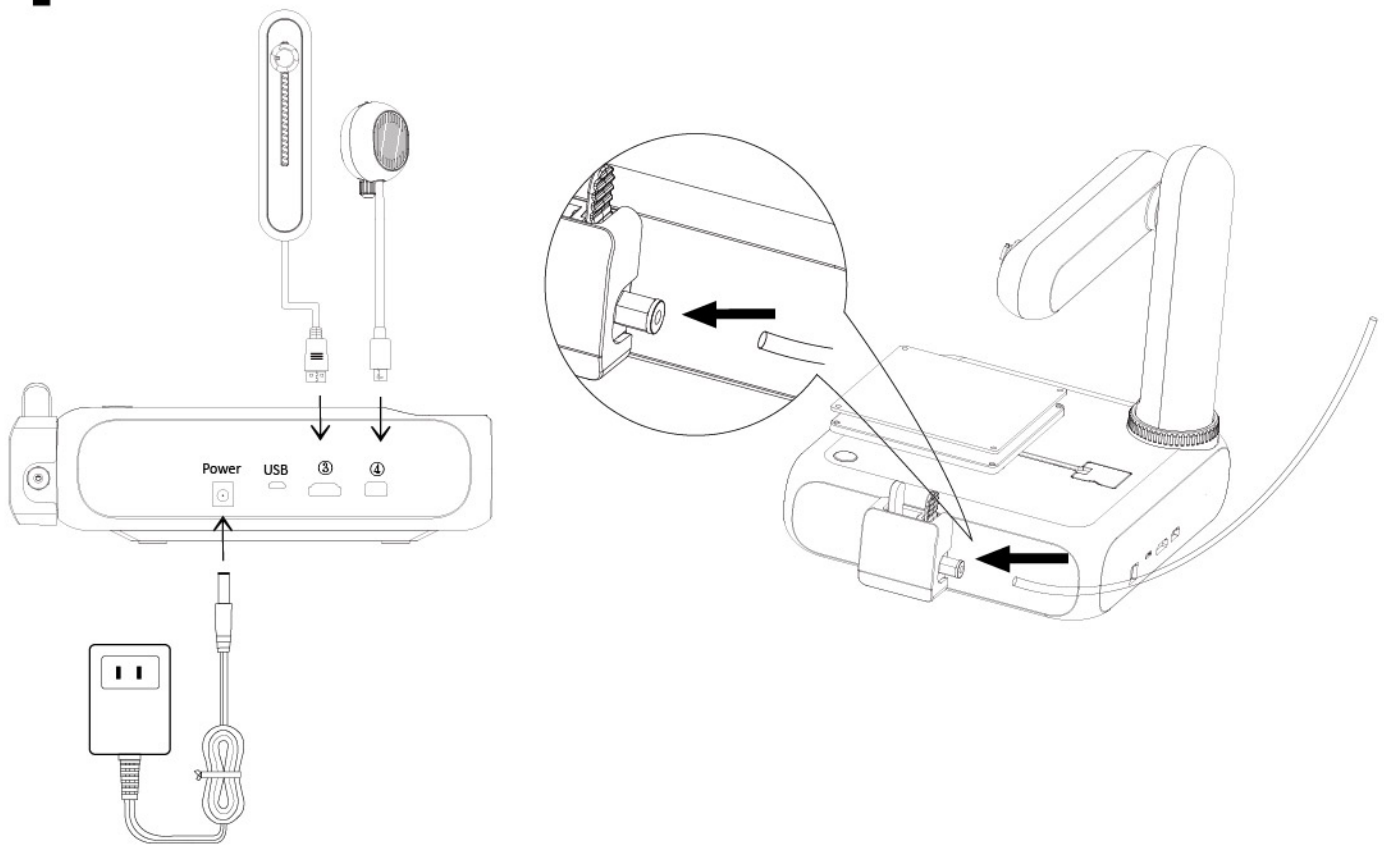
2



3



4



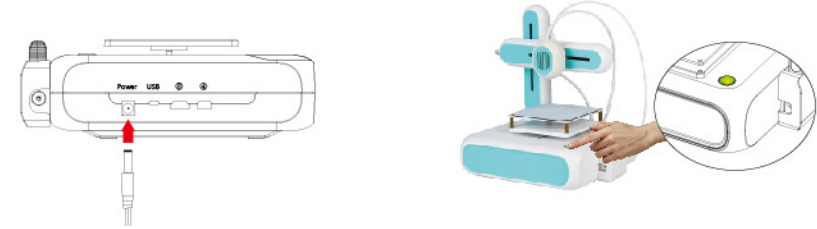
APP

1.Download mobile App_“CUBE software” from Google Play or App Store.



2.Plug-in and turn on the printer

Touch the power button and the indicator light will turn green.

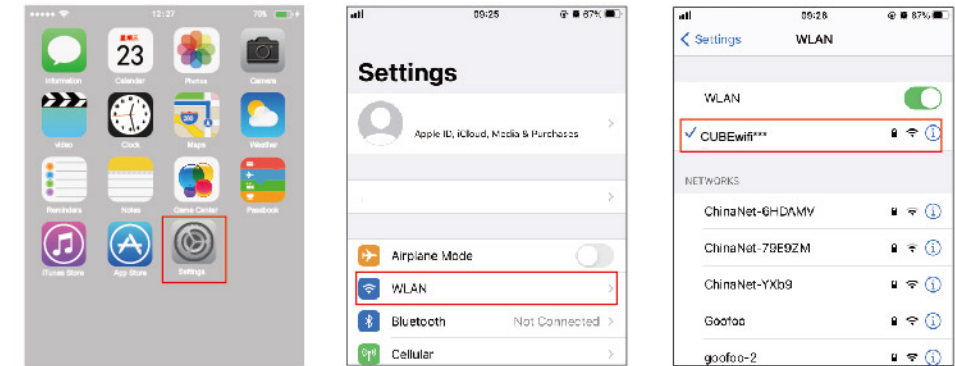


★ Attention

- ①The printer only supports 2.4GHz Wifi network.
- ②If there is the changing on the Wifi network, like in different place or with different Wifi router, it is the must to re-configure the printer:
>--Press the power button and hold for 5seconds. The Green LED will not go off, indicating the printer enters the factory default settings, and follow the 3rd and 4th steps to re-setup Wifi network.

3.Realize the mobile control of the printer by connecting to the printer hotspot:

Enter “Setting”--“WLAN” and select the printer hotspot “CUBEwifixxxx”



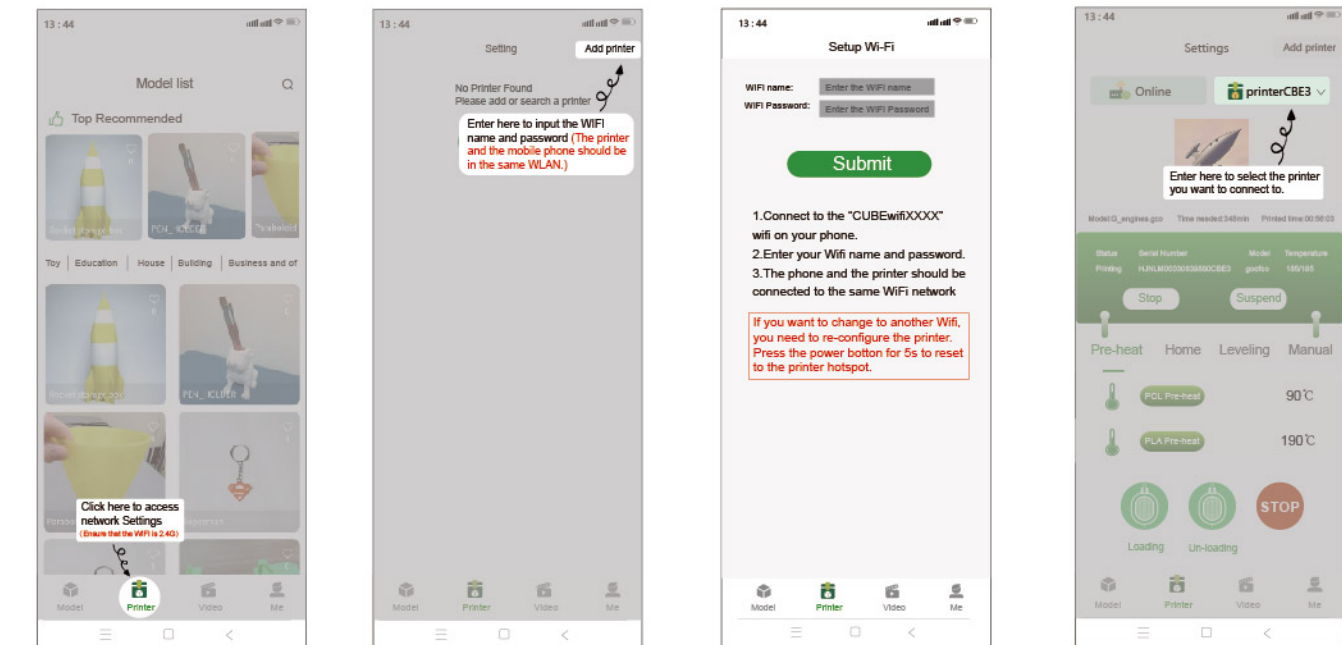
① Select <Settings>

② Choose <Wi-Fi>

③ Choose <CUBEwifi***>

4.Connect the printer to your network

4.1.Open App , and follow the indication screen to finish the network connecting.



① Setup WiFi under 2.4GHz network.

② Enter here to input the WiFi name and password. (The printer and the mobile phone should be in the same WiFi network.)

③ Input the WiFi name and password.

④ Enter here to select the printer as the series no. on the mainbody, which you want to connect to.

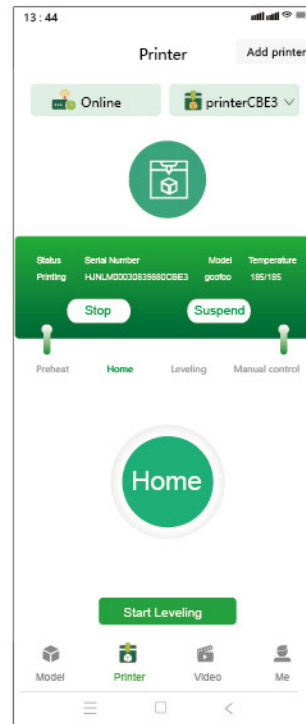
5.Print bed leveling

The print bed is well levelled when out of the factory, but there will be the deviation during the transportation. If the print results aren't good, we can do the small calibration as following steps.

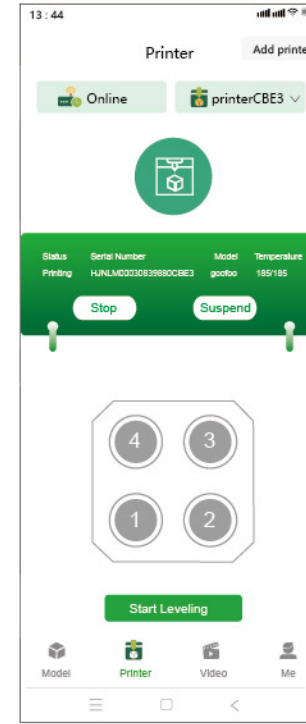
5.1 Cut down the levelling paper along the dotted line and put it between the extruder and print bed. Then enter "Printer"-- "Home"-- "Levelling" and follow 5.2 & 5.3 steps.

5.2 If the paper can be moved easily between the nozzle and platform, you can adjust 4pcs screws anticlockwise with Hex wrench, until there is the slight resistance between the nozzle and the paper.

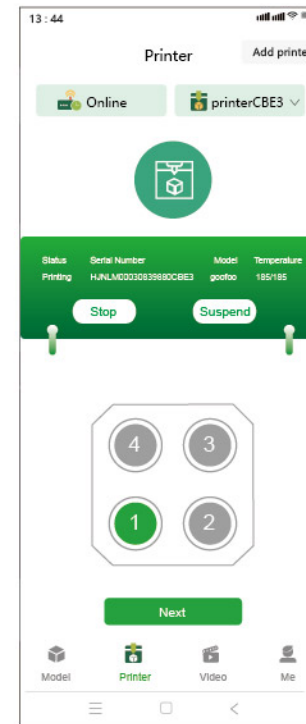
5.3 If the paper can't be moved entirely, you can adjust the screws clockwise, until the paper can be pulled back and forth with a slight resistance.



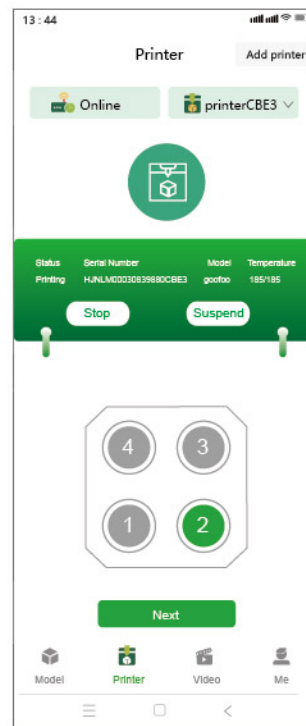
1.Click <home>, set the print head to Zero position.



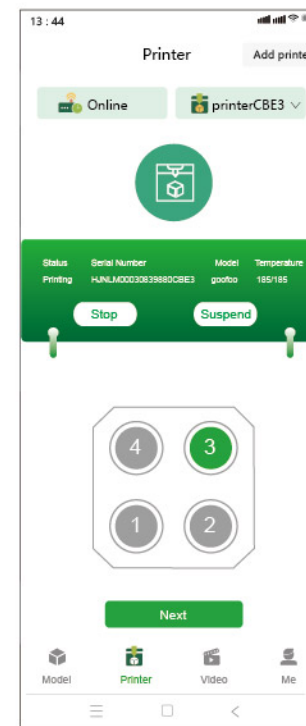
2.Select <Levelling>



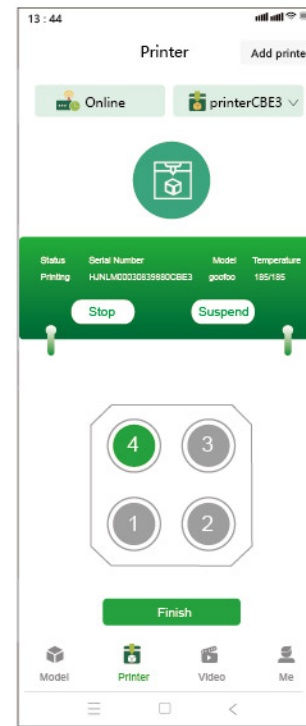
3.Press "Start printing" and the print head moves to "1" follow 5.2 or 5.3 to do the leveling.



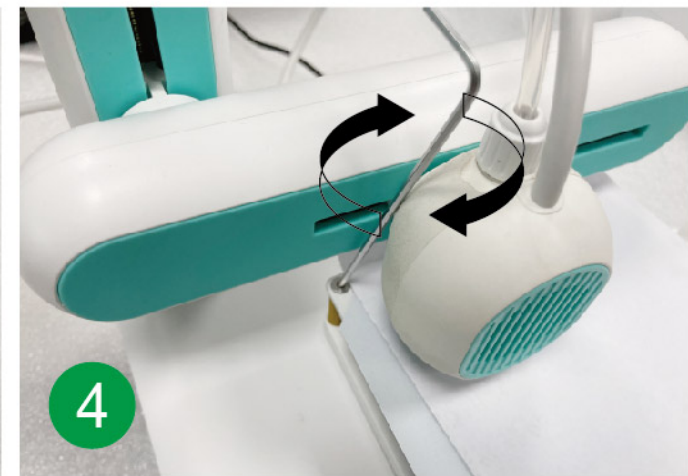
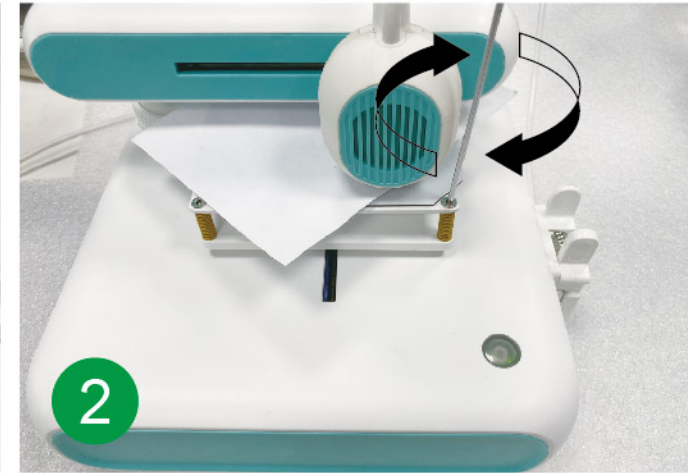
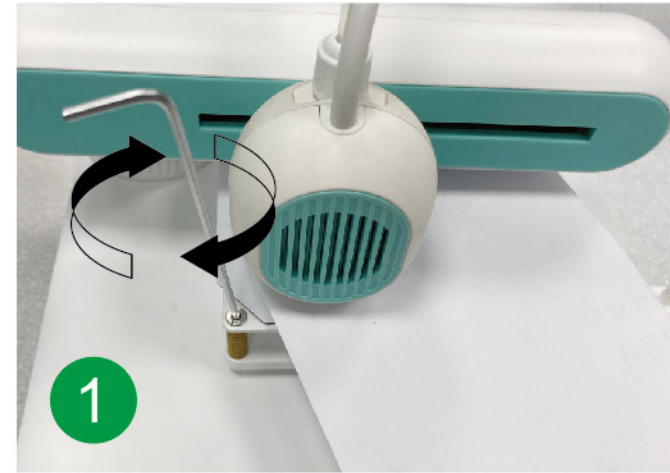
4.Press "Next" and the print head moves to "2" follow 5.2 or 5.3 to do the leveling.



5.Press "Next" and the print head moves to "3" follow 5.2 or 5.3 to do the leveling.



6.Press "Next" and the print head moves to "4" follow 5.2 or 5.3 to finish the leveling.



Levelling Paper

FCC Statement:

Any Changes or modifications not expressly approved by the party responsible for compliance could void the user's authority to operate the equipment.

This device complies with part 15 of the FCC Rules. Operation is subject to the following two conditions:

- (1) This device may not cause harmful interference, and
- (2) This device must accept any interference received, including interference that may cause undesired operation.

FCC Radiation Exposure Statement:

This equipment complies with FCC radiation exposure limits set forth for an uncontrolled environment. This equipment should be installed and operated with minimum distance 20cm between the radiator& your body.

Note: This equipment has been tested and found to comply with the limits for a Class B digital device, pursuant to part 15 of the FCC Rules. These limits are designed to provide reasonable protection against harmful interference in a residential installation. This equipment generates, uses and can radiate radio frequency energy and, if not installed and used in accordance with the instructions, may cause harmful interference to radio communications. However, there is no guarantee that interference will not occur in a particular installation. If this equipment does cause harmful interference to radio or television reception, which can be determined by turning the equipment off and on, the user is encouraged to try to correct the interference by one or more of the following measures:

- Reorient or relocate the receiving antenna.
- Increase the separation between the equipment and receiver.
- Connect the equipment into an outlet on a circuit different from that to which the receiver is connected.
- Consult the dealer or an experienced radio/TV technician for help.