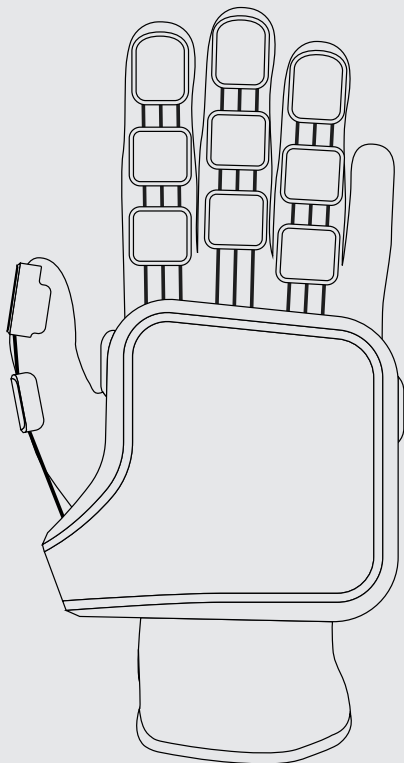


NOVA 2 USER MANUAL



SENSEGLOVE

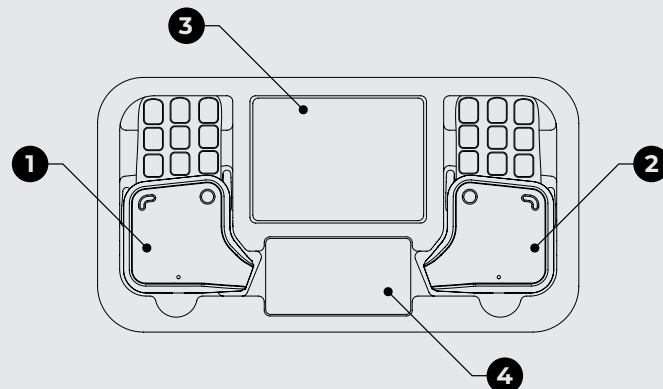
CONTENTS

WHAT'S IN THE BOX	3
COMPONENTS & FEATURES	4
BUTTON CONTROLS	6
DONNING & DOFFING	8
WIRELESS PAIRING & CONNECTING	13
CHARGING & BATTERY	17
LIGHT & VIBRATION SIGNALS	18
SOFTGLOVE 2 & SIZES	19
MOUNTING A TRACKER OR CONTROLLER	22
SOFTWARE RESOURCES	24
GLOVE CARE AND MAINTENANCE	25
TROUBLESHOOTING	26
TECHNICAL SPECIFICATIONS	28
SAFETY INFORMATION	30
DISPOSAL & RECYCLING GUIDELINES	38
WARRANTY	39
REGULATORY INFORMATION	43
CONTACT	47

WHAT'S IN THE BOX

In the SenseGlove Nova 2 case you will find all items essential for ensuring optimal performance of the gloves. The Nova 2 comes standard with a set of tracker mounts and a single size of Softgloves in the package. Should the need arise for another type of tracker mounts, a different size Softgloves or spare parts, kindly reach out to our customer support for assistance.

- 1 Nova 2 left
- 2 Nova 2 right
- 3 Tracker mounts
- 4 Accessory kit with
 - a. Charging plug and cables
 - b. Tracker mount thumb screws



COMPONENTS & FEATURES

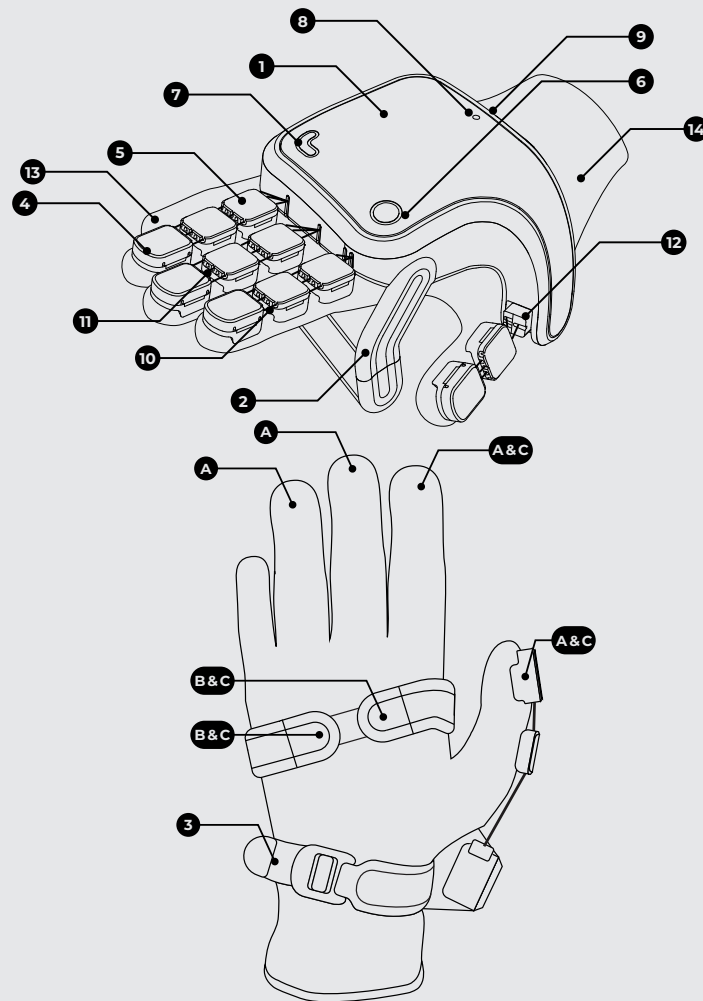
The figures on the right introduce the terms used within this guide to describe specific parts of the Nova 2, as well as how these components contribute to the glove's features.

Components:

- 1 Hub
- 2 Haptic strap
- 3 Wrist strap
- 4 Thimble
- 5 Cable guide
- 6 Power button
- 7 Haptic Strap control button
- 8 LED indicator
- 9 USB-C charging port
- 10 Force feedback cable
- 11 Finger flexion sensing cable
- 12 Thumb motion sensor
- 13 Softglove 2
- 14 Cuff

Features:

- A Resistive force feedback
- B Pressure force feedback
- C Vibration feedback (LRA)



BUTTON CONTROLS



Strap control

Pressing the top surface near the little finger controls the tightness of the Haptic Strap (upper strap), according to the following rules:

- Pressing the button will alternate between tightening and loosening the strap.
- A single press will either automatically tighten the strap for optimal comfort and security, or completely loosen the strap.
- Pressing the button continuously will tighten or loosen until button is released.
- The first press after turning on the glove will always tighten.

Note that when turning off the glove, the strap will automatically release completely.

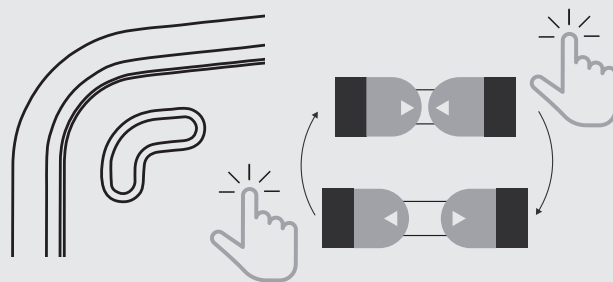
We recommend you use the auto-tighten option first and use continuous presses for finetuning.



Power button

Pressing the top surface near the thumb will turn the glove on or off, according to the following rules:

- Power on: single press
- Power off: press and hold for 3 seconds



DONNING & DOFFING

To put on the Nova 2 gloves, follow these steps:

Step 1: Place the Nova upside down on a stable surface, e.g., a table or desk.

Step 2: Slide your hand into the glove, while tugging on the cuff with your other hand. Make sure your fingertips reach all the way into the thimbles, and that the hub connector remains secure inside the hub. Turn your hand around.

Step 3: Check that the hub is centred on the back of your hand and that the cables leaving the hub are aligned with your fingers to prevent sore knuckles and tracking issues.

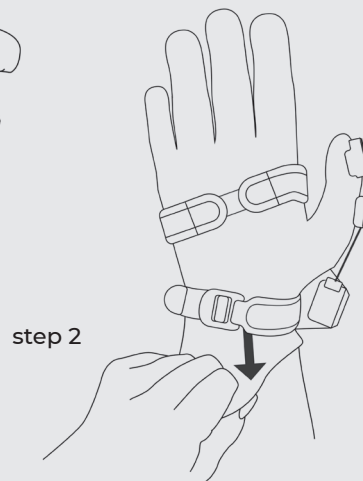
Step 4: Tighten the wrist strap by pulling the tab.

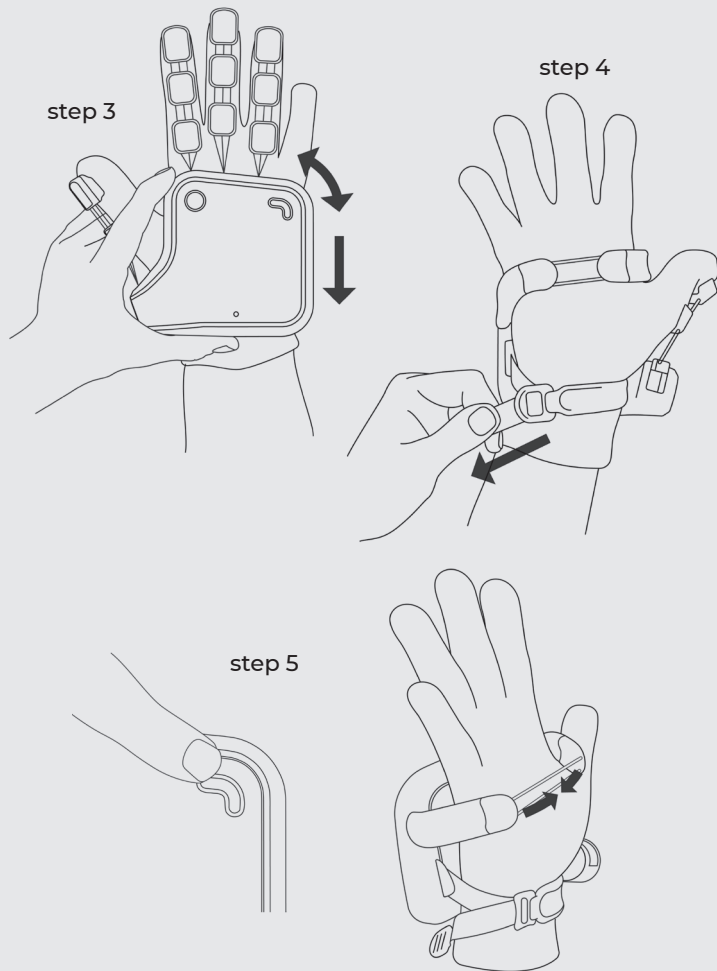
Step 5: Turn on the glove by pressing the button located on the top surface near the thumb. Tighten the Haptic Strap by pressing the button located on the top surface near the pinkie finger.

Pay special attention to the following details:

- Properly position the thimbles on the fingertips, ensuring the fingerprint presses into the bowl of the thimble.

- Verify that the force feedback and sensor cables are not obstructed or tangled.
- Adjust the straps to secure the hub stably to the hand, while avoiding any discomfort.
- Position the hub properly on the back of the hand. You should be able to see your knuckles and the cable guides should not touch the hub.



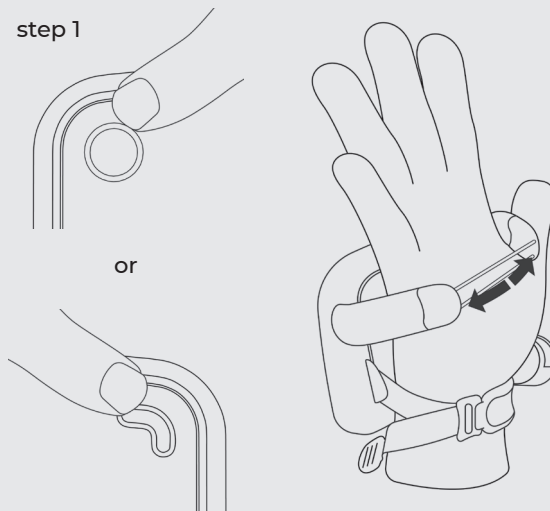


To take off the Nova 2 gloves, follow these steps:

Step 1: Release the Haptic Strap by either turning off the glove or using the strap control button on the top surface of the hub.

Step 2: Release the wrist strap by tugging the buckle upwards.

Step 3: Gently grasp the glove by the fingers and pull it off your hand.



WIRELESS PAIRING & CONNECTING

Connecting to a PC

On Windows or Linux, an application called SenseCom is used to identify and communicate with SenseGlove devices. To download and install the SenseCom software, refer to our online documentation:

<http://docs.senseglove.com/sensecom/overview>

After connecting your device(s) to your PC, you can run SenseCom to check if the connection was successful.

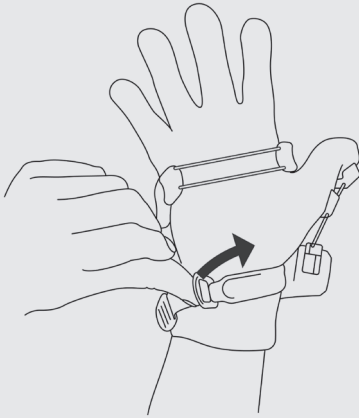
Connecting to Android devices

On Android devices, communication with SenseGlove devices is embedded in the application itself and will not require a SenseCom installation.

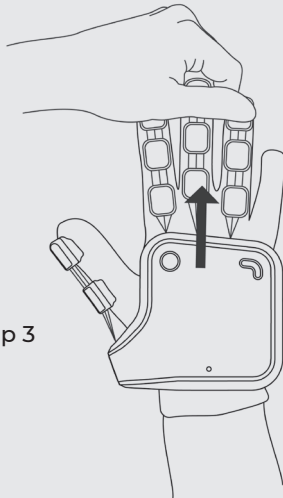
Pairing Nova 2

Before pairing, make sure the Nova 2 is turned on. Your Nova 2 gloves will have an identifier "NOVA2-XXXX-X" that should show up in the list of nearby devices. XXXX-X is a unique ID for each Nova 2. The L or R at the end indicates whether the device is a left- or right-hand glove.

step 2



step 3



Windows 10+

- Go to Settings > Devices > Bluetooth & other devices
- For Windows 11 make sure the setting under Devices settings > Bluetooth devices Discovery are set to Advanced instead of Basic. Otherwise the SenseGlove device will not show in pairing.
- Click Add Device > Bluetooth. Select your Nova 2 from the list of nearby devices. Use the glove's unique ID to find the right Bluetooth name.
- After selecting your device in this list, a pop-up window will appear, asking whether you want to pair the device.
- Press Connect. Your Nova 2 is now paired and trusted.
- Launch the SenseCom application. Your device should show up in its UI.

It is normal for Nova 2 gloves to show up as Paired but not Connected until you launch SenseCom. You should not need to pair/unpair a Nova 2 in between sessions.

Linux

The Nova 2 needs to be paired to your Linux system, so that it is recognized as an "rfcomm" device. There are various ways to do so. Please refer to docs.senseglove.com/connecting-devices for more information.

Meta Quest 2, 3 & Pro

- Open your quick settings menu by selecting the left-most icon in your Meta Dashboard.
- Open the actual settings menu by clicking on the gear icon in the top right.
- Select the Devices tab, and open the Bluetooth tab (this should be the default screen).
- Select the Pair option from the Bluetooth Pairing section.
- A popup will appear. Select the Pair new Device option at the top.
- Select your SenseGlove device from the list of nearby devices. Use the reference above to find the right Bluetooth name.
- After selecting your device in this list, a pop-up window will appear, asking whether you want to pair the device.
- Press Connect and wait a second.

Your device is now paired and trusted, and will show up in the Previously Connected Devices list. This means it is paired and ready to use.

Vive Focus 3

- Go to Settings > Connectivity > Bluetooth. Select Pair New Device.
- Select your SenseGlove device from the list of Other Device. Use the reference above to find the right Bluetooth name.
- A pop-up will appear. Select Confirm to complete the pairing process.

The Nova Glove should now show up in your Bluetooth Menu, which means it is paired.

Also pair your Vive Wrist Trackers in their usual manner. When you do, indicate that you will not be using them for hand tracking.

Pico Neo 2, 3

- Open the Bluetooth menu by selecting the Bluetooth icon below your dashboard.
- Select your Nova 2 from the list of Other Device. Use the reference above to find the right Bluetooth name.
- After selecting your glove from this list, a pop-up window will appear, asking whether you want to pair the device.
- Press Pair Device. Your Nova 2 is now paired and trusted.

Android phone

- Open your Bluetooth menu via Settings > Connections > Bluetooth. Or by long tapping on the Bluetooth Icon in your quick settings menu.
- Select your Nova 2 from the list of available devices. Use the reference above to find the right Bluetooth name.
- After selecting your glove in this list, a pop-up will appear, asking whether you want to pair the device.
- Press OK. Your Nova 2 is now paired and trusted.

Need more help?

You can always check out more extensive documentation at:
docs.senseglove.com/connecting-devices.

CHARGING & BATTERY

Before first use, it is recommended to fully charge your Nova 2.

Use the included USB cables and charger to charge your device. Connect the USB-C end of the cable to the Nova 2 and the USB-A end to the charger and then plug the charger into a power outlet. The charger facilitates simultaneous charging for both gloves (left and right). While it is possible to charge the Nova 2 using the USB port of your computer, please note that it will result in a slower charging rate compared to using the provided charger.

Be advised that the Nova 2 battery may drain when the device is not used for an extended period of time.

LIGHT & VIBRATION SIGNALS

Your Nova 2 device gives clues regarding its status using light and vibration signals.

The LED indicator is on the top surface of the hub. The following light signals are used:

Blue – static: the Nova 2 is switched on, and is connected wirelessly to another device (HMD or PC).

Blue – blinking: the Nova 2 is switched on and is not connected wirelessly to any other device.

Red - static: low battery level. Charge your glove.

Green – blinking: the glove is plugged in and charging.

Green – static: the glove is plugged in and fully charged.

In addition to these LED signals, vibration cues indicate when the device is turned on, when it's connected to SenseCom and when it's successfully switched off.

SOFTGLOVE 2 & SIZES

The textile part of the Nova 2 is called the 'Softglove 2'. It comes in three sizes, allowing you to find the perfect fit for your hands. The hub is size independent; in order to switch sizes, you swap the Softglove 2 for another size.

Sizes

To determine your size, measure the length and width of your hand in millimeters according to the image. Look up the matching size in the table. If the length and width of your hand point to different sizes, the smaller size will often provide the better product experience.

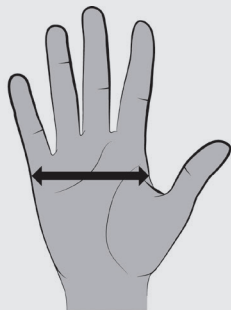
To detach the Softglove 2 from the rest of the Nova 2, follow these steps:

Step 1: detach all the cable guide and thimble connectors by gently pressing them between your thumb and index finger, then sliding your thumb and finger in opposite directions. To detach, the tops should slide to the left.

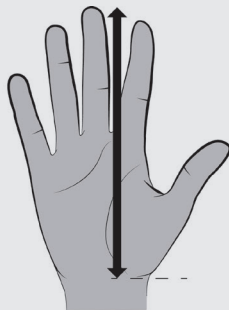
Step 2: pull the hub connector from the underside of the hub.

Step 3: draw the Softglove 2 from behind the straps and remove completely.

To attach a Softglove 2 to the Nova 2, simply follow the previous steps in reverse order. To attach the finger connectors, the tops should slide to the right.



Hand width



Hand length

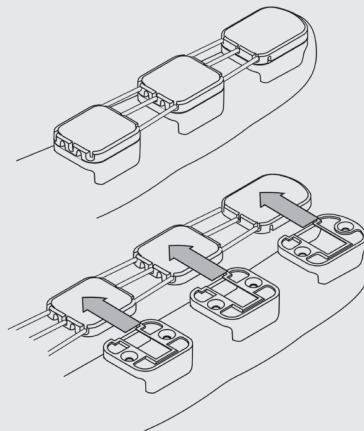
Size	Hand width	Hand length
S	< 82	< 182
M	82 - 88	182 - 192
L	> 88	> 192

**Dimensions are in mm*

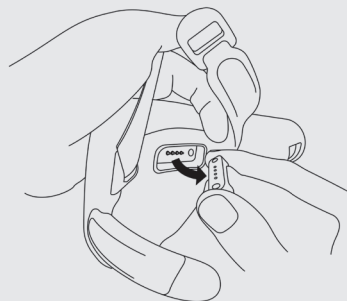
***Can't choose between two sizes? The slightly smaller size will result in the best product performance*

detach the Softglove 2:

step 1

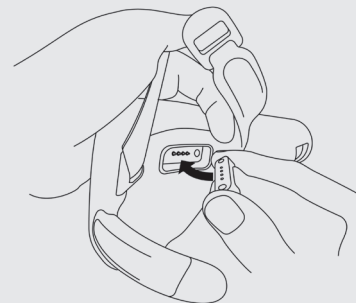


step 2

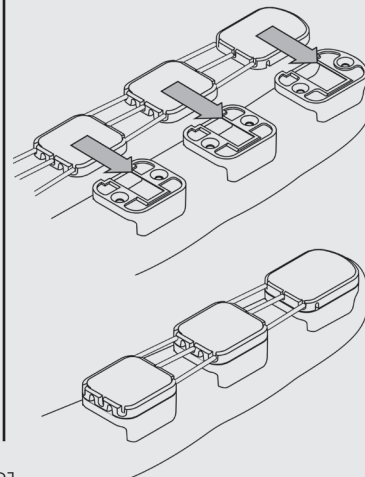


attach the Softglove 2:

step 1



step 2



MOUNTING A TRACKER OR CONTROLLER

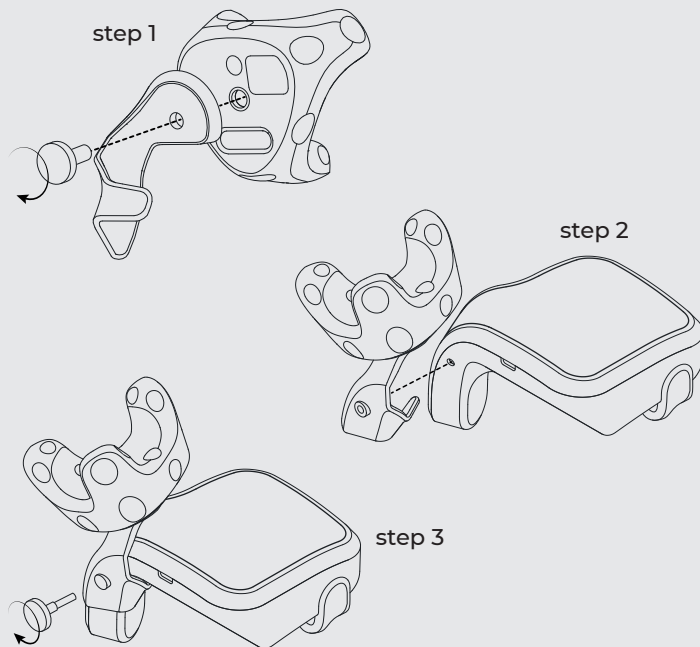
To track the position and orientation of the Nova 2, an external tracker or controller is required. VR head-mounted displays (HMDs) typically come with a tracker or controller. With your set of Nova 2s you should have received a mount that interfaces with the tracker or controller that works with your system.

To fix the mount to the Nova 2 hub, position the mount in the arch between the hub and the thumb module, as shown in the image. Ensure that the hole in the mount and in the hub are aligned. Insert the thumb screw and screw it until the mount is securely attached to the hub. You do not need a screwdriver for this. Check that there is no play between hub and mount and that no cables or fabric got caught between hub and mount.

Although the attachment method of the mount to the hub is consistent across all tracker/controller types, the method for securing the tracker/controller to the mount varies depending on the system. For some trackers, such as the Vive Tracker, the Vive Wrist Tracker and the Meta Quest 3 controller, it is easiest to first secure

the tracker to the mount, before fastening the mount to the hub. For other systems, such as the Meta Quest 2, it's more convenient to first attach to mount to the Nova 2 and click the controller in place after.

Please visit senseglove.com/setup/nova2 for more information on mounting your tracker or controller.



SOFTWARE RESOURCES

Links to all relevant APIs and plugins can be found at:

<https://www.senseglove.com/developer>

For documentation on all software and hardware resources please refer to:

docs.senseglove.com or
<https://senseglove.gitlab.io/SenseGloveDocs>

Tutorials are regularly posted on our YouTube page:

<https://www.youtube.com/@senseglove4021>

When using the provided software packages, a familiarity with the relevant development platforms – such as Unity and Unreal Engine – is expected.

GLOVE CARE & MAINTENANCE

Softglove 2

When necessary, the Softglove 2 can be washed using a gentle handwash procedure.

Detach the Softglove 2 from the rest of the Nova 2 (see p. 19). Use a small amount of delicate textile detergent and tepid water. Submerge the Softglove 2 and use your hands to gently agitate the water. Soak the Softglove 2 for at most 30 minutes. Rinse the Softglove with cold or tepid water to remove any detergent residue. Carefully press out excess water without twisting or folding the glove. For quicker drying, gently press the Softglove 2 with a towel, before hanging or laying it out to dry.

Do not re-attach the Softglove 2 to the Nova 2 until it is completely dry. Using a wet or moist Softglove can lead to damage or injury.

We recommend replacing the Softglove 2 after 5 washing cycles. Beyond this we cannot guarantee product performance and safety. Do not use the Softglove 2 when it shows wear or damage such as frays.

Nova 2

The plastic and silicone components of the Nova 2 can be cleaned by gently wiping them with a soft, clean cloth. If necessary, the cloth can be damp – but not wet to prevent water from entering the product.

We recommend storing the Nova 2 gloves in their original case after each use, following the same arrangement as when initially received, which includes removing the tracker mounts. Turn off the gloves before placing them in the case and securely zip the lid.

TROUBLESHOOTING

In case the gloves don't work as expected, please perform these basic checks before contacting us:

- The cables running from the hub to the fingertips are not twisted, knotted up or obstructed in any way.
- No cables are caught between the hub and the tracker mount.
- All sliding connectors on the fingers are attached.

- The magnetic connector between the hub and the Softglove 2 is properly attached.
- The tracker mount is stably attached to the hub; no motion between the mount and the hub is possible.
- The Nova 2 is paired and connected to the proper PC or HMD.
- When using a PC: SenseCom has been launched and shows that the Nova 2 is connected.
- When using trackers: the trackers are turned on and paired to the proper HMD/PC.
- Make sure each glove is only connected to a single device. If the LED light on the glove blinks blue before pairing it is not connected to any other device and ready to connect. If the LED is solid blue before connecting, it is already connected to another device. Unpair the gloves from any other devices via the other device's settings menus.
- Make sure only the Bluetooth devices in use are paired with the HMD/PC for stable performance.

You can find additional troubleshooting tips at docs.senseglove.com/trouble-shooting.

If all of the above is in order and the problem persists, get in touch with us via www.senseglove.com/support.

TECHNICAL SPECIFICATIONS

Feature	Specifications
Motion Capturing	9-axis absolute orientation sensor
	5 sensors to capture the flexion and extension of the thumb, index-, middle, and ring-fingers
	1 sensor to capture the ab- and adduction of the thumb
Force Feedback	4 proprietary passive force feedback modules delivering a resistive force of up to 20 N at the fingertips, preventing flexion
	A force resolution with an average of 0.2 N per programmable step
Vibrotactile Feedback	2 Linear Resonance Actuators of up to 2.0G peak acceleration with a center frequency of 170 Hz located at the fingertips of the index and thumb
	2 Linear Resonance Actuators of up to 1.8G peak acceleration with a centre frequency of 170 Hz

	located at the ends of the active strap
Active Contact Feedback	A brushed DC motor module to shorten and lengthen the active strap, squeezing the hand palm
Power	A nominal 3400 mAh Li-ion battery, lasting an average of 3 hours of simulation time. Running time is highly dependent on use-case
	With the included charger, it takes an approximate 1.5 hours to charge from 10 to 80%
Communication	2.4 GHz wireless personal area network, 60 – 90 Hz refresh rate
Weight	~390g
Software APIs	APIs available for C#, C++ native, as well as Unity- and Unreal Engine plugins. For an up-to-date list, please visit: docs.senseglove.com/compatibility
Positional Tracking	Requires 3rd party hardware to track the glove's position in space. Mounts for several 3rd party tracking solutions are provided.

SAFETY INFORMATION

Important Safety Information – Read Before Use

READ THE FOLLOWING WARNINGS AND INFORMATION BEFORE USE OF THE PRODUCT AND FOLLOW ALL PRODUCT SAFETY AND OPERATING INSTRUCTIONS. FAILURE TO DO SO MAY CAUSE BODILY INJURY (INCLUDING ELECTRIC SHOCK, FIRE, AND OTHER INJURY), PROPERTY DAMAGE, OR EVEN DEATH. IF YOU ALLOW OTHERS TO USE THE PRODUCT, YOU ARE RESPONSIBLE FOR ENSURING EACH USER IS AWARE OF AND FOLLOWS ALL PRODUCT SAFETY AND OPERATING INSTRUCTIONS.

Ensure you are able to safely use the product

Consult your doctor before using the product if you have pre-existing serious medical conditions (such as a heart ailment), conditions that affect your ability to safely perform physical activities, psychiatric conditions (such as anxiety disorders or post-traumatic stress disorder), or if you are pregnant or elderly. Do not use the product if you are sick, fatigued, under the influence of intoxicants/drugs, or are not feeling generally well, as it may exacerbate your condition.

Ensure your surroundings are safe for product use

Only use the product in a clear and safe area. Do not use near stairways, large windows, heat

sources, or outdoors. Clear the area of people, furniture, and other things that may be obstacles or block you from moving freely.

Electrical safety

The product contains a lithium-ion battery. There is a risk of fire and burns if a battery is handled improperly. The product is intended for use when supplied with power from the internal battery. Other usage may be dangerous and will invalidate any approval given to this product. Do not connect with incompatible products or accessories. Do not attempt to remove or replace the internal battery.

Use caution when charging the product. Do not wear the product while it is charging. Use the correct battery charger. Product should be operated only from the type of battery charger indicated on the electrical ratings label. If you are not sure of the type of battery charger required, consult the manufacturer.

CAUTION: Connecting to improperly grounded equipment can result in an electric shock.

WARNING: To reduce risk of fire or burns, do not disassemble, crush, puncture, short external contacts or circuits, expose to temperature above 40° C (104° F), or dispose of in fire or water. Always recycle or dispose of used batteries according to the local regulations.

Take care of the gloves

While using the gloves, always check that you have sufficient overhead and surrounding clearance to allow you to fully extend your arms outward and upwards. Hitting persons or objects may cause injury or damage.

Repetitive strain injuries

Operate the product in a comfortable posture. Do not grip the product too tightly. If you have tingling, numbness, stiffness, throbbing, or other discomfort, immediately stop using the product and consult your doctor.

Avoid overuse and immediately stop using if you experience any discomfort

Prolonged, uninterrupted use of the product should be avoided. While using the product frequently and for prolonged periods of time, you may experience tiredness or soreness in your muscles, joints, or other body parts. Take regular breaks from using the product.

Radio frequency interference

The product can emit radio waves that can interfere with the operation of nearby electronic devices. If you have a cardiac pacemaker or other implanted medical device, do not use the product until you have consulted with your doctor or the manufacturer of your medical device. To minimize radio frequency interference, use only original manufacturer-

approved accessories, or accessories that do not contain any metal. Use of non-original manufacturer-approved accessories may violate your local radio frequency exposure guidelines and should be avoided.

Use by children

The product was not designed to be used by children. Do not leave the product within the reach of children and do not allow them to use or play with it. They could hurt themselves or others, or could accidentally damage the product. The product may contain small parts with sharp edges that may cause an injury or which could become detached and create a choking hazard for young children. Consult your doctor immediately if any parts of the product or its accessories are swallowed.

Not intended for fail-safe performance

The product was not designed for applications that require fail-safe performance. Do not use the product in any application in which a malfunction of the product could result in a foreseeable risk of injury or death to any person or damage to property.

Keep the product away from excessive moisture and extreme temperatures

Do not leave the product in places such as on a window sill, or behind glass that is exposed to direct sunlight or strong ultraviolet light for

extended periods of time. This may damage or overheat the battery, or otherwise pose a risk of damage to the product or surrounding persons or property. Do not allow the product to be exposed to rain or other sources of moisture. The product should be kept away from heat sources such as radiators, heat registers, stoves, or other products (including amplifiers) that produce heat.

Avoid using the product after a dramatic change in temperature

When you move the product between environments with very different temperature and/or humidity ranges, condensation may form on or within the product. To avoid damaging the product, allow sufficient time for the moisture to evaporate before using the product. When taking the product from low-temperature conditions into a warmer environment or from high-temperature conditions into a cooler environment, allow the product to acclimate to room temperature before turning on power.

Cleaning the product

Unplug the product from the battery charger before cleaning. Never immerse the product in water or cleaning solutions. Do not use harsh chemicals, cleaning solvents, liquid cleansers or aerosols to clean the product or its accessories. See section 'Glove care & maintenance' in the manual for cleaning instructions.

Faulty and damaged products

- If user suspects damage or identifies signs of overheating, stop use and return product to a service center for inspection.
- If the product is exposed to liquid or excessive heat, or does not operate normally when you follow the operating instruction, stop use and return product to a service center for inspection.
- Do not disassemble or attempt to service this product.
- Only qualified personnel must service or repair the product or its accessories.
- Do not use a damaged product as personal injury or further damage may result.
- Do not power on the product if any external damage was observed.

General precautions

- Treat the product and its accessories with care.
- Do not use the product for anything other than its intended use i.e., spatial computing.
- This device is intended to be used in a professional setting, in an office environment and similar environments.
- Only use the product indoors.
- Do not give the product to children to play with and do not leave product lying around where children may have access to it.
- Do not leave the product turned on unattended and turn the product off after use.
- Do not leave unattended while charging.
- Only use product at room temperature (~20°C).

- Do not use the product in extremely dry or humid conditions, i.e., below or above 30-60% humidity.
- Before using the product, make sure there is enough space in your environment to maneuver freely without bumping into any objects, people or animals.
- The product should not be exposed to strong magnetic fields.
- When using the product, make sure it is used with a SoftGlove 2 that fits the user's hands.
- When using the Nova 2 with hygienic gloves, use gloves with low surface friction.
- The device contains a Li-Ion battery and should be used with sufficient precautions.
- While wearing the device, do not hold objects that are not dummy objects or VR controllers.
- While wearing the device, do not hold metal or other conductive objects.
- Use and store the product in a clean and dust-free place.
- Store the product and its accessories at temperatures between 0°C to 40°C.
- When unused, store the product in its original packaging.
- Only transport the product stored in its original packaging.
- Remove tracker mounts before storing.
- Do not drop, crush, bend, deform, puncture, shred, microwave or incinerate the product and/or its accessories.
- Do not paint or apply any coating to the

product or its accessories.

- Do not attempt to open, take apart or otherwise disassemble this product and/or its accessories.
- Do not put the product or its components in nose or mouth.
- Do not use the product when it is (partly) moist or wet.
- Do not touch the force feedback cables during use.
- Do not slide fingers or objects between hand palm and haptic strap cables during use.
- Do not insert foreign objects of any kind into any opening or slot in the product.
- Do not dry the product with an external heat source such as a microwave oven or hair dryer.
- Do not use the product when damaged.
- Do not heat the device to more than 40°C.
- Do not use near a heater, fireplace, direct sunlight, air conditioning unit or other source of direct energy.
- Do not expose to or submerge product in liquid.
- Do not use the product in any potentially explosive atmosphere or where flammable materials exist.
- Do not expose the product or its accessories to open flames or lit smoking products.
- Use only accessories approved for use with the product. Do not connect with incompatible products or accessories.
- If the product becomes uncomfortably warm

during use, stop and allow it to cool down before continued use to avoid discomfort, redness, or low temperature burns.

- If you notice any itching, eczema, swelling, irritation of the skin, or you experience any discomfort, please discontinue use and consult your physician.

DISPOSAL & RECYCLING GUIDELINES

When disposing of your set of Nova 2 gloves, please adhere to responsible disposal and recycling practices to minimize environmental impact. Check for any local regulations or recycling programs that accept electronic devices. Whenever possible, recycle the appliance through authorized e-waste collection centres or recycling facilities. By doing so, you contribute to the sustainable management of electronic waste, promoting environmental conservation and responsible resource use.



WARRANTY

The SenseGlove Nova 2 has a limited 1 (one) year warranty.

Products Covered and Duration of Warranty

This Limited Warranty of SenseGlove BV, applies to Nova 2 hardware products manufactured by SenseGlove BV. The product purchased shall be free from defects in material and workmanship from the date of shipment by SenseGlove BV for one year (365 days).

Terms of the Warranty

SenseGlove warrants that the product you have purchased from SenseGlove or a SenseGlove authorized reseller is free from defects in materials and workmanship under normal use during the warranty period. The warranty period begins on the day of shipment from SenseGlove. The warranty extends only to the original purchaser. It is not transferable to anyone who subsequently purchases the product from you. It excludes all expendable parts.

During the warranty period, the SenseGlove Service and Repair Center will repair or replace defective parts with new parts or, at the option of SenseGlove, serviceable used parts that are equivalent or superior to new parts in

performance.

This Limited Warranty extends only to products purchased from SenseGlove or a SenseGlove authorized reseller. This Limited Warranty does not extend to any product that has been damaged or rendered defective (a) as a result of accident, misuse or abuse; (b) by operation outside the usage parameters stated herein; (c) by the use of parts not manufactured or sold by SenseGlove; (d) by modification of the product; (e) as a result of war or terrorist attack; or (f) as a result of service by anyone other than SenseGlove or a SenseGlove authorized reseller or authorized agent.

EXCEPT AS EXPRESSLY SET FORTH IN THIS WARRANTY, SENSEGLOVE MAKES NO OTHER WARRANTIES EXPRESSED OR IMPLIED, INCLUDING ANY IMPLIED WARRANTIES OR MERCHANTABILITY AND FITNESS FOR A PARTICULAR PURPOSE. SENSEGLOVE EXPRESSLY DISCLAIMS ALL WARRANTIES NOT STATED IN THIS LIMITED WARRANTY. ANY IMPLIED WARRANTIES THAT MAY BE IMPOSED BY LAW ARE LIMITED TO THE TERMS OF THIS EXPRESS LIMITED WARRANTY.

Limitations of Remedy

SenseGlove is not liable for any damages caused by the product or by the failure of the product to perform, including any lost profits, lost

savings, incidental damages, or consequential damages. SenseGlove is not liable for any claim made by a third party or made by you for a third party.

This limitation applies whether damages are sought, or a claim made, under this warranty or as a tort claim (including negligence and strict product liability), a contract claim, or any other claim. This limitation cannot be waived or amended by any person. This limitation of liability will be effective even if SenseGlove or an authorized SenseGlove representative has been advised by you of the possibility of any such damages. This limitation of liability, however, will not apply to claims for personal injury.

How do I obtain Warranty Service?

For a defect during the warranty period, please contact us through support@senseglove.com. In case the product needs to be returned, return the defective item, freight, and insurance prepaid, preferably in the original shipping container to SenseGlove or your SenseGlove authorized reseller. SenseGlove is not responsible for any loss or damages incurred in shipping. A SenseGlove Failure Analysis/Test Engineer or a SenseGlove authorized reseller must validate all warranty claims.

What is not covered by this warranty?

- Product purchased from anyone other than

SenseGlove or a SenseGlove authorized reseller.

- Expendable parts such as the Softglove 2.
- Routine cleaning or normal cosmetic and mechanical wear.
- Damage from misuse, abuse or neglect.
- Damage from use of fluids.
- Damage from use outside the product's usage or storage parameters.
- Damage from use of parts not manufactured or sold by SenseGlove.
- Damage from modification or incorporation into other products.
- Damage from repair or replacement of warranted parts by a service provider other than a SenseGlove authorized service provider.

REGULATORY INFORMATION

For regulatory identification purposes, your product is assigned a model number of:
NOVA 2 MDL: 01.

This product's FCC ID is: 2A24H-NOVA02. This FCC ID can also be found on the sticker on the bottom of the Nova 2 hub, near the thumb.

FCC Interference Statement

Compliance statement (part 15.19)

This device complies with part 15 of the FCC Rules. Operation is subject to the following two conditions: (1) this device may not cause harmful interference, and (2) this device must accept any interference received, including interference that may cause undesired operation.

Warning (part 15.21)

Changes or modifications not expressly approved by the party responsible for compliance could void the user's authority to operate the equipment.

Information to the User (Part 15.105 (b))

Note: This equipment has been tested and found to comply with the limits for a Class B digital device, pursuant to part 15 of the FCC Rules. These limits are designed to provide reasonable protection against harmful interference in a residential

installation. This equipment generates, uses and can radiate radio frequency energy and, if not installed and used in accordance with the instructions, may cause harmful interference to radio communications. However, there is no guarantee that interference will not occur in a particular installation. If this equipment does cause harmful interference to radio or television reception, which can be determined by turning the equipment off and on, the user is encouraged to try to correct the interference by one or more of the following measures:

- Reorient or relocate the receiving antenna.
- Increase the separation between the equipment and receiver.
- Connect the equipment into an outlet on a circuit different from that to which the receiver is connected.
- Consult the dealer or an experienced radio/TV technician for help.

This transmitter must not be co-located or operating in conjunction with any other antenna or transmitter.

Operations in the 2.402-2.480GHz band are restricted to indoor usage only. This device meets all the other requirements specified in Part 15E, Section 15.407 of the FCC Rules. This product is for indoor use only. FCC regulations restrict the operation of this device to indoor use only. Operation prohibited on oil platforms,

cars, trains, boats, and aircraft.

Radio frequency exposure statement

For body worn operation, this device complies with the FCC and ISED portable RF exposure limit set forth for an uncontrolled environment and are safe for intended operation as described in this manual. RF exposure reduction can be achieved if the product can be kept as far as possible from the user's body. Prohibited for control of or communications with unmanned aircraft systems, including drones.

European Union notice

SenseGlove declares that the device complies with the essential requirements and relevant provisions of Directive (2014/53/EU). The radio equipment operates with the following frequency bands and maximum radio frequency power:

Product	Radio Type/Description	Transmitter Frequency (MHz)	EIRP
NOVA02	2.4GHz wireless	2402 ~ 2480	-12 – 9 dBm

WEEE notice

The Directive on Waste Electrical and Electronic Equipment (WEEE), which entered into force as European law on 13th February 2003, resulted in a major change in the treatment of electrical equipment at end-of-life. The purpose of this Directive is, as a first priority, the prevention of

WEEE, and in addition, to promote the reuse, recycling and other forms of recovery of such wastes so as to reduce disposal. The WEEE logo (see below) indicates that this product must not be discarded in a landfill. Electronic devices contain substances that may be hazardous to the environment if not properly disposed of. For more information about electronic and electrical waste equipment disposal, recovery, and collection points, please contact your local city center, household waste disposal service, shop from where you purchased the equipment, or manufacturer of the equipment.

RoHS Compliance

This product is in compliance with Directive 2011/65/EU of the European Parliament and of the Council of 8 June 2011, on the restriction of the use of certain hazardous substances in electrical and electronic equipment (RoHS) and its amendments (EU 2015/863). This product is in compliance with the Restriction of the Use of Certain Hazardous Substances in Electrical and Electronic Equipment Regulations 2012, statutory instrument 2012/3032 and its amendments.



CONTACT

If you experience problems or if you have questions, please contact us through:
support@senseglove.com.

Main office

Molengraaffsingel 12
2629JD Delft
The Netherlands

info@senseglove.com
+31 15 2002 148

US office

6922 Hollywood Boulevard
Los Angeles, CA 90028
United States

info@senseglove.com
+1 213 973 0053

Website

www.senseglove.com

senseglove.com/setup/nova2



