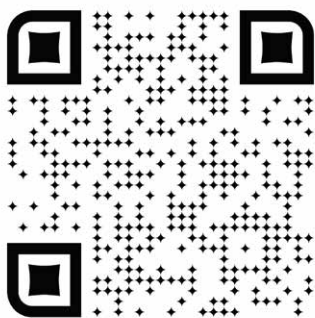


OUTDOOR ROUTER



EZR33 SERIES QUICK GUIDANCE EZR33 SERIE SCHNELLEITUNG



EZR33.OutdoorRouter.com/v/33l

Scan QR code or visit URL link to see the complete edition of the online manual.

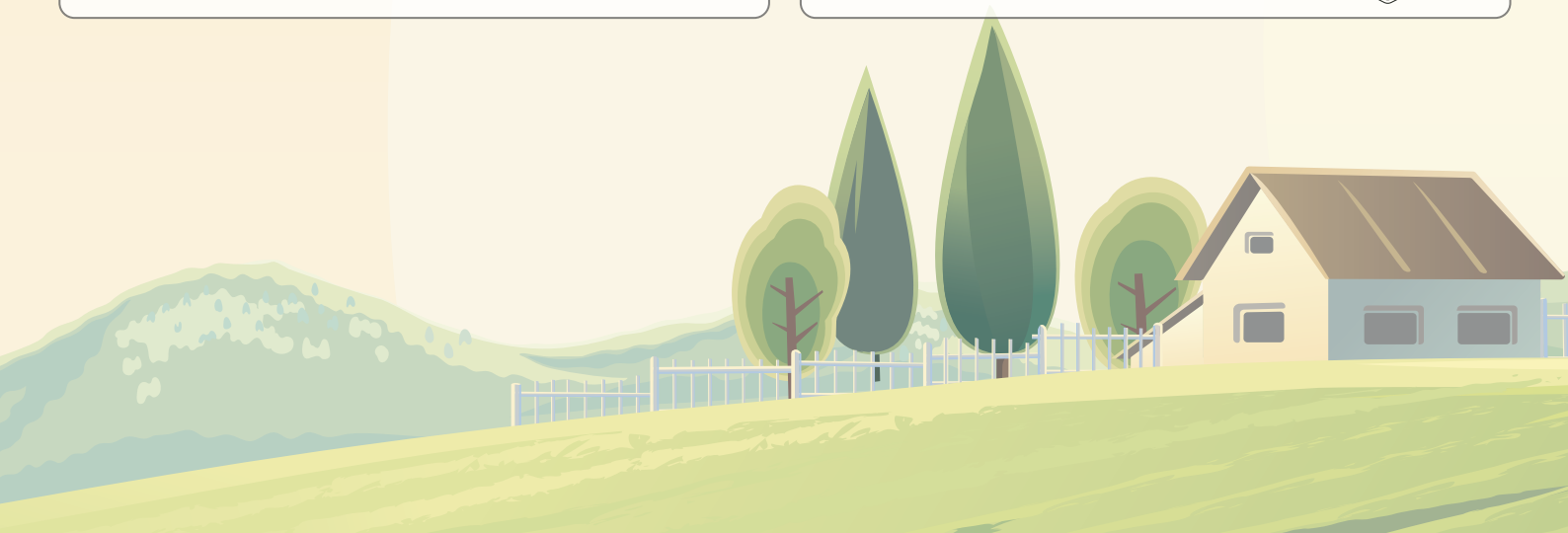
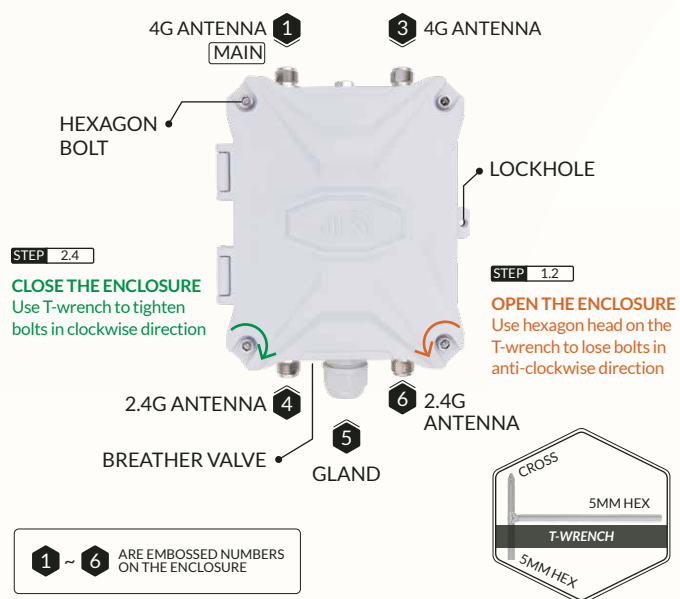
Scannen Sie den QR-Code oder besuchen Sie den URL-Link, um die vollständige Ausgabe des Online-Handbuchs zu sehen.

PACKAGE CONTENTS PACKUNGSINHALT

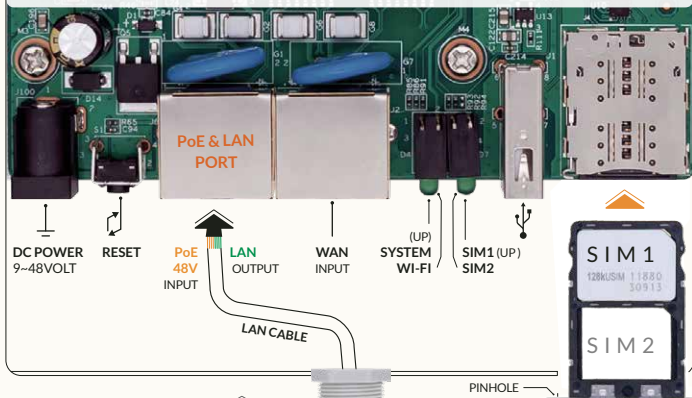
STEP 1.1 Check and count the package contents.

Outdoor Router Außen-Router	4G & Wi-Fi Antennas Rundum-Antennen	10-Meter LAN Cable LAN-Kabel 32,8-Fuß
PoE Injector PoE-Injektor 48Volt	L-Bracket & T-Wrench Halterung & Schlüssel	Mounting Kit Montagesatz für außen

INTERFACE OVERVIEW PORTS & SCHNITTSTELLEN AM ROUTER



MOTHERBOARD | SIM CARD & PoE HAUPTPLATINE | SIM-KARTE UND PoE



STEP 2.3 PoE

- Take cap off from the gland. Push out the stopper from the inside of the gland.
- Take one end of the LAN cable through the cap.
- Put LAN cable through the barrel screw and plug in the PoE & LAN port on the motherboard.
- Clamp the stopper on the LAN cable and settle it in the barrel.
* The smaller end faces the outside.
- Turn the cap in the clockwise direction to tighten it on the barrel screw.
- Connect another end of the LAN cable to PoE port on the PoE injector.
- Connect AC plug on the PoE injector to electrical outlet until set up all the below steps (to 3.3).

NOTE
To exchange the AC plug, press and hold the Push button then push the AC plug upward to take it off.

8. ETHERNET

- Connect a computer to the LAN port on the PoE injector to get the Ethernet connection.
- To use another router, connect its WAN port to the LAN port on the PoE injector.

STEP 2.4

Close the lid & press it with your hand. Use T-wrench to tighten four pieces hexagon bolts on the lid.
Ensure no gap after tightening the screws!

3 BARREL



SIM CARD STEP 2.1

TURN OFF POWER BEFORE INSERTING THE SIM CARD

Use the pin to push the pinhole .1 until the SIM card tray pops out

Insert a SIM card in the SIM1 slot .2
Reposition the SIM card tray .3 in the slot and push it back

WARNINGS

Use activated SIM card in the router *
Make sure the SIM card is working well *
Insert SIM card in the SIM1 slot *

STEP 2.2

Make sure the mobile carrier has a strong enough signal in your area

The modem sensitivity is -101dBm equals to approx. 2-bar on a phone

Refer to <https://ezen.link/signal-test>

ANTENNAS

Locate embossed numbers 1-6 on the top & bottom sides

1 & 3 for 4G antennas
4 & 6 for Wi-Fi antennas

Turn the hex part on the antennas in the clockwise direction to tighten them



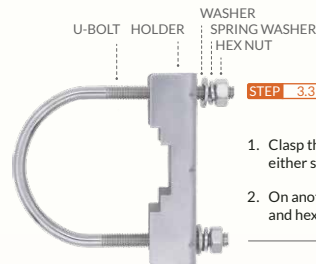
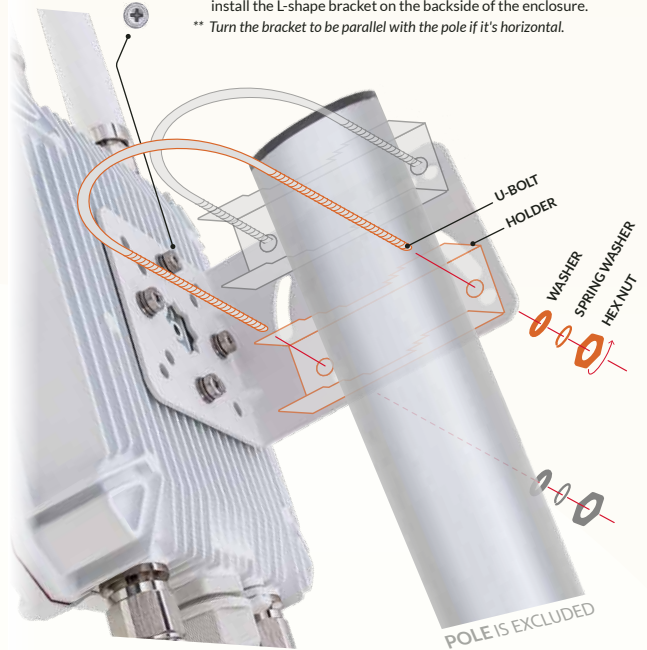
BRACKET & MOUNTING HALTERUNG UND BEFESTIGUNG

STEP 3.1

Walk around with a mobile phone and check the network type and signal bars. Then choose a location with a 4G LTE network reception and strong signal reception.

STEP 3.2

Use the cross end on T-wrench and M6 cross-head screws to install the L-shape bracket on the backside of the enclosure.
** Turn the bracket to be parallel with the pole if it's horizontal.



STEP 3.3 INSTALL ON A POLE

Find a pole with diameter of Ø35-50mm.

- Clasp the pole with U-bolts and holders, attach them on either side of the L-shape bracket.
- On another side of the bracket, put washers, spring washers, and hex nuts on U-bolts. Tighten the nuts with an M10 spanner.

FIRMWARE CONFIGURATION FIRMWARE KONFIGURATION

STEP 4.1

After turning on power (step 2.3.7), use a phone or computer to join the Wi-Fi hotspot **Outdoor-WiFi-xxx** or connect the computer to the LAN port on the PoE injector (step 2.3.8).

Open a web browser, enter the router IP **http://192.168.30.1** on the address bar.

Click the **Login** button to access the admin panel.

* If unable to access, recheck the Wi-Fi and LAN connections and clean the web browser cache.

*** **http://192.168.30.1**

AUTHORIZATION REQUIRED

Please enter your router password!

Password

Login



STEP 4.2 After accessing the router admin panel, navigate to **System > System** from the top menu. Under the tab of **General Settings**, click the **Sync with browser** button to sync the time.

Router password

Go to **System > Administration**, input new custom **router password** twice, and save settings. **Keep the new password in a safe place.*

STEP 4.3 Go to **Network > Wireless**, click the **Edit** button on **SSID: Outdoor-WiFi-xxx (Mode: Master)**. Scroll down to **Interface Configuration**, change Wi-Fi SSID on **ESSID** field.

Wi-Fi SSID & password

Click the tab of **Wireless Security**, choose **WPA-PSK/WPA2-PSK** on **Encryption**. Input the Wi-Fi password on the **Key** field, then save settings. It will use 1-2 minutes to reboot the Wi-Fi hotspot.

STEP 4.4 MOBILE MODEM

- Status** On the front page, check the modem status and the signal strength on the right-side **DEVICE** section.
- Interface** Go to **Network > Interfaces**, check the IP and traffic flow of the **MOBILE** interface.
- APN** It is non-necessary to change APN unless the mobile carrier requires to do so. Click the **Edit** button on the **MOBILE**. Tap the **Primary SIM1** (or SIM2) tab to change APN. ** Check the APN tutorial on <https://ezen.link/APN>.*
- Protocol** It is also not necessary to change the protocol unless default one is no supported. ** Check the protocol tutorial on <https://ezen.link/protocol>.*

5. Debug	Status	Solution
	Disabled	Check if the SIM card is locked.
	Connection attempt failed	Re-insert the SIM card and check the signal strength.
	Network device is not present	The Guardian module is resetting. Wait for 2-3 minutes.
	Connected but no internet	Check if the data plan supports use on a 4G router.

STEP 4.5 LOCAL NETWORKS

Turn on DHCP mode on the phone or computer to obtain a local IP address from the 4G router. To use a static IP address, please comply with the below format.

Computer IP	192.168.30.100~249 (pick one IP from 100~249)
Subnet mask	255.255.255.0 (24 on Windows)
Gateway (Router IP)	192.168.30.1

STEP 4.6 RECOVERY

Reboot

The router might have glitches after running for days or weeks. Reboot the router could solve most of the issues. You may go to **System > Reboot** or unplug the PoE injector to reboot the router.

Soft Reset

If the router works unstable after made changes to the firmware, please go to **System > Backup / Flash Firmware**. Click the **Perform reset** button to run a soft reset.

Hard Reset

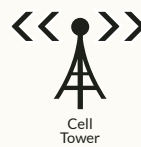
If unable to access the router admin panel, please run a hard reset. When the device is powered on, tap and hold the **round Reset button** for 5 seconds. Then release it and **wait for 4 minutes** to boot up.

!IMPORTANT! DO NOT TURN OFF POWER WHILE RESETTNG THE ROUTER!



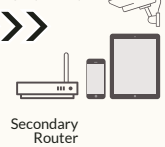
Thanks for reading! If you have questions while using the router, please check the online manual at ezr33.outdoorrouter.com/v/331

Please feel free to contact us if you need any further assistance.



EZR33
Outdoor
4G Router

Wi-Fi & Ethernet



Secondary
Router

WORKING PRINCIPLE
WIE FUNKTIONIERT EIN 4G-ROUTER?

OutdoorRouter
www.outdoorrouter.com

Feel free to contact us if you need any further assistance.
Wenn Sie weitere Unterstützung benötigen, können Sie uns gerne kontaktieren.

Call Us

United Kingdom	+44 020 3575 1156
United States	+1 323 521 4621
Australia	+61 02 8205 3116

Send An E-Mail

sales@outdoorrouter.com

FCC Statement

FCC Statement

This device comply with Part 15 of the FCC Rules. Operation is subject to the following two conditions:

- This device does not cause harmful interference.
- This device must accept any interference received, including interference that may cause undesired operation.

If this device is modified without authorization from Ezen, the device may no longer comply with FCC requirements for Class B digital devices. In that a case, your right to use the device may be limited by FCC regulations. Moreover, you may be required to correct any interference to radio or television communications at your own expense.

This device has been tested and found to comply with the limits for a Class B digital device, pursuant to Part 15 of the FCC rules. These limits are designed to provide reasonable protection against harmful interference in a residential installation.

This device generates, uses and radiates radio frequency energy. If it is not installed and used in accordance with the instructions, it may cause harmful interference to radio communications. However, there is no guarantee that interference will not occur in a particular installation. If this device does cause harmful interference to radio or television reception, which can be determined by turning the device off and on, the user may take one or more of the following measures:

- Reorient or relocate the receiving antenna.
- Reinforce the separation between the device and receiver.
- Connect the device into an outlet on a circuit different from that to which the receiver is connected.
- Consult the dealer or an experienced radio or TV technician for assistance.

FCC Radiation Exposure Statement

This equipment complies with FCC RF radiation exposure limits set forth for an uncontrolled environment. This transmitter must not be co-located or operating in conjunction with any other antenna or transmitter. This equipment should be installed and operated with a minimum distance of 20 centimeters between the radiator and your body.

The device contains LTE Module: EC25-AF (Contains FCC ID: XMR201808EC25AF).

