

**CFR 47 FCC PART 15 SUBPART C  
ISED RSS-247 ISSUE 2 (DTS)**

**TEST REPORT**

*For*

**Outdoor Battery Cameras (Wi-Fi HomeBase)**

**MODEL NUMBER: W331-H**

**FCC ID: 2A22Z-W331H**

**IC: 27673-W331H**

**REPORT NUMBER: E01A23030560F00101**

**ISSUE DATE: July 24, 2023**

*Prepared for*

**Botslab, Inc.**

**919 North Market Street, Suite 950, Wilmington New Castle, Delaware, USA**

*Prepared by*

**Dong Guan Anci Electronic Technology Co., Ltd.**

**1-2 Floor, Building A, No.11, Headquarters 2 Road, Songshan, Lake Hi-tech Industrial Development Zone, Dongguan City, Guangdong Pr., China.**

**This report shall not be reproduced, except in full, without the written approval of  
Dong Guan Anci Electronic Technology Co., Ltd.**

Revision History

Rev.	Issue Date	Revisions	Revised By
V0	July 24, 2023	Initial Issue	Duke

Summary of Test Results			
Test Item	Clause	Limit/Requirement	Result
Antenna Requirement	N/A	FCC Part 15.203/15.247 (c) RSS-GEN Clause 6.8	Pass
AC Power Line Conducted Emission	ANSI C63.10-2013, Clause 6.2	FCC Part 15.207 RSS-GEN Clause 8.8	Pass
Conducted Output Power	ANSI C63.10-2013, Clause 11.9.1.3	FCC Part 15.247 (b)(3) RSS-247 Clause 5.4 (d)	Pass
6dB Bandwidth and 99% Occupied Bandwidth	ANSI C63.10-2013, Clause 11.8.1	FCC Part 15.247 (a)(2) RSS-247 Clause 5.2 (a) ISED RSS-Gen Clause 6.7	Pass
Power Spectral Density	ANSI C63.10-2013, Clause 11.10.2	FCC Part 15.247 (e) RSS-247 Clause 5.2 (b)	Pass
Conducted Band edge and spurious emission	ANSI C63.10-2013, Clause 11.11	FCC Part 15.247(d) RSS-247 Clause 5.5	Pass
Radiated Band edge and Spurious Emission	ANSI C63.10-2013, Clause 11.11 & Clause 11.12	FCC Part 15.247 (d) FCC Part 15.205/15.209 RSS-247 Clause 5.5 RSS-GEN Clause 8.9	Pass
Duty Cycle	ANSI C63.10-2013, Clause 11.6	None; for reporting purposes only.	Pass

\*The measurement result for the sample received is <Pass> according to <CFR 47 FCC PART 15 SUBPART C  
ISED RSS-247 ISSUE 2 (DTS)> when <Accuracy Method> decision rule is applied.

## CONTENTS

<b>1. ATTESTATION OF TEST RESULTS.....</b>	<b>5</b>
<b>2. TEST METHODOLOGY.....</b>	<b>6</b>
<b>3. FACILITIES AND ACCREDITATION.....</b>	<b>6</b>
<b>4. CALIBRATION AND UNCERTAINTY .....</b>	<b>7</b>
4.1. <i>MEASURING INSTRUMENT CALIBRATION .....</i>	<i>7</i>
4.2. <i>MEASUREMENT UNCERTAINTY.....</i>	<i>7</i>
<b>5. EQUIPMENT UNDER TEST .....</b>	<b>8</b>
5.1. <i>DESCRIPTION OF EUT .....</i>	<i>8</i>
5.2. <i>CHANNEL LIST .....</i>	<i>8</i>
5.3. <i>MAXIMUM AVERAGE EIRP .....</i>	<i>9</i>
5.4. <i>TEST CHANNEL CONFIGURATION.....</i>	<i>9</i>
5.5. <i>THE WORSE CASE POWER SETTING PARAMETER.....</i>	<i>9</i>
5.6. <i>DESCRIPTION OF AVAILABLE ANTENNAS .....</i>	<i>9</i>
5.7. <i>SUPPORT UNITS FOR SYSTEM TEST.....</i>	<i>10</i>
5.8. <i>SETUP DIAGRAM .....</i>	<i>10</i>
<b>6. MEASURING EQUIPMENT AND SOFTWARE USED.....</b>	<b>11</b>
<b>7. ANTENNA PORT TEST RESULTS .....</b>	<b>12</b>
7.1. <i>Conducted Output Power.....</i>	<i>12</i>
7.2. <i>6dB Bandwidth and 99% Occupied Bandwidth .....</i>	<i>13</i>
7.3. <i>Power Spectral Density.....</i>	<i>15</i>
7.4. <i>Conducted Band edge and spurious emission .....</i>	<i>16</i>
7.5. <i>Duty Cycle .....</i>	<i>18</i>
<b>8. RADIATED TEST RESULTS .....</b>	<b>19</b>
<b>9. ANTENNA REQUIREMENT .....</b>	<b>36</b>
<b>10.         AC POWER LINE CONDUCTED EMISSION .....</b>	<b>37</b>
<b>11.         TEST DATA.....</b>	<b>40</b>
<b>APPENDIX: PHOTOGRAPHS OF TEST CONFIGURATION .....</b>	<b>41</b>
<b>APPENDIX: PHOTOGRAPHS OF THE EUT .....</b>	<b>43</b>

## 1. ATTESTATION OF TEST RESULTS

### Applicant Information

Company Name: Botslab, Inc.  
Address: 919 North Market Street, Suite 950, Wilmington New Castle,  
Delaware, USA

### Manufacturer Information

Company Name: Botslab, Inc.  
Address: 919 North Market Street, Suite 950, Wilmington New Castle,  
Delaware, USA

### EUT Information

EUT Name: Outdoor Battery Cameras (Wi-Fi HomeBase)  
Model: W331-H  
Brand: Botslab  
Sample Received Date: April 15, 2023  
Sample Status: Normal  
Sample ID: A23030560 002  
Date of Tested: June 01, 2023 to July 24, 2023

APPLICABLE STANDARDS	
STANDARD	TEST RESULTS
CFR 47 FCC PART 15 SUBPART C ISED RSS-247 ISSUE 2 (DTS)	Pass

Prepared By:

Duke

Duke Liu

Project Engineer

Checked By:

Dyson

Dyson Dai

Project Engineer

Approved By:

Tiger

Tiger Xu

Laboratory Supervisor



## 2. TEST METHODOLOGY

All tests were performed in accordance with the standard CFR 47 FCC PART 15 SUBPART C  
ISED RSS-247 ISSUE 2 (DTS)

## 3. FACILITIES AND ACCREDITATION

Site Description

Name of Firm : Dong Guan Anci Electronic Technology Co., Ltd.

Site Location : 1-2 Floor, Building A, No.11, Headquarters 2 Road, Songshan,  
Lake Hi-tech Industrial Development Zone, Dongguan  
City, evelopment Zone, Dongguan City, Guangdong Pr., China.

## 4. CALIBRATION AND UNCERTAINTY

### 4.1. MEASURING INSTRUMENT CALIBRATION

The measuring equipment utilized to perform the tests documented in this report has been calibrated in accordance with the manufacturer's recommendations and is traceable to recognized national standards.

### 4.2. MEASUREMENT UNCERTAINTY

Where relevant, the following measurement uncertainty levels have been estimated for tests performed on the apparatus:

Where relevant, the following measurement uncertainty levels have been estimated for tests performed on the apparatus:

Test Item	Measurement Frequency Range	K	U(dB)
Conducted emissions from the AC mains power ports	0.009 MHz ~ 0.15 MHz	2	4.00
Conducted emissions from the AC mains power ports	0.15 MHz ~ 30 MHz	2	3.62
Radiated emissions	9kHz ~ 30MHz	2	2.20
Radiated emissions	30 MHz ~ 1 GHz	2	3.16
Radiated emissions	1 GHz ~ 18 GHz	2	5.64

Note: This uncertainty represents an expanded uncertainty expressed at approximately the 95% confidence level using a coverage factor of  $k=2$ .

## 5. EQUIPMENT UNDER TEST

### 5.1. DESCRIPTION OF EUT

EUT Name		Outdoor Battery Cameras (Wi-Fi HomeBase)
Model		W331-H
EUT Classification		Class B
Internal Frequency		5900MHz
Ratings		DC 12V, 2A
Power Supply	AC	120V/60Hz

Frequency Band:	2400 MHz to 2483.5 MHz
Frequency Range:	2402 MHz to 2480 MHz
Bluetooth Version:	Bluetooth 5.0
Bluetooth Mode:	Bluetooth LE
Type of Modulation:	GFSK
Number of Channels:	40
Channel Separation:	2 MHz
Maximum Peak Power:	1.74 dBm
Antenna Type:	PCB Antenna
Antenna Gain:	3.54 dBi
Normal Test Voltage:	AC 120V/60Hz

### 5.2. CHANNEL LIST

Channel	Frequency (MHz)	Channel	Frequency (MHz)	Channel	Frequency (MHz)	Channel	Frequency (MHz)
0	2402	11	2424	22	2446	33	2468
1	2404	12	2426	23	2448	34	2470
2	2406	13	2428	24	2450	35	2472
3	2408	14	2430	25	2452	36	2474
4	2410	15	2432	26	2454	37	2476
5	2412	16	2434	27	2456	38	2478
6	2414	17	2436	28	2458	39	2480
7	2416	18	2438	29	2460	/	/
8	2418	19	2440	30	2462	/	/
9	2420	20	2442	31	2464	/	/
10	2422	21	2444	32	2468	/	/



**5.3. MAXIMUM AVERAGE EIRP**

Test Mode	Frequency (MHz)	Channel Number	Maximum Peak Output Power (dBm)	Maximum EIRP (dBm)
LE 1M	2402 ~ 2480	0-39[40]	1.74	

**5.4. TEST CHANNEL CONFIGURATION**

Test Mode	Test Channel	Frequency
LE 1M	CH 0(Low Channel), CH 19(MID Channel), CH 39(High Channel)	2402 MHz, 2440 MHz, 2480 MHz
LE 2M	CH 0(Low Channel), CH 19(MID Channel), CH 39(High Channel)	2402 MHz, 2440 MHz, 2480 MHz

**5.5. THE WORSE CASE POWER SETTING PARAMETER**

The Worse Case Power Setting Parameter under 2400 ~ 2483.5MHz Band				
Test Software Version		SecureCRT V3.7		
Modulation Type	Transmit Antenna Number	Test Software setting value		
		CH 0	CH 19	CH 39
GFSK(1Mbps)	1	default	default	default

**5.6. DESCRIPTION OF AVAILABLE ANTENNAS**

Antenna	Frequency (MHz)	Antenna Type	MAX Antenna Gain (dBi)
1	2402-2480	PCB Antenna	3.54

Test Mode	Transmit and Receive Mode	Description
LE 1M	<input checked="" type="checkbox"/> 1TX, 1RX	Antenna 1 can be used as transmitting/receiving antenna.

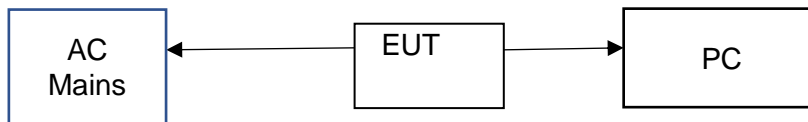
Note:  
1.BT&WLAN 2.4G, BT & WLAN 5G, WLAN 2.4G & WLAN 5G can't transmit simultaneously.  
(declared by client)

## 5.7. SUPPORT UNITS FOR SYSTEM TEST

The EUT has been tested as an independent unit

Equipment	Manufacturer	Model No.
adapter	TEKA	TEKA-TD120200XX
PC	Lenovo	T14

## 5.8. SETUP DIAGRAM



## 6. MEASURING EQUIPMENT AND SOFTWARE USED

Test Equipment of Conducted RF					
Equipment	Manufacturer	Model No.	Serial No.	Last Cal.	Due Date
Spectrum Analyzer	Rohde & Schwarz	FSV40	US40240623	2022-10-29	2023-10-28
RF Test Software	MWRF-test	MTS 8310	N/A	N/A	N/A
Radio Frequency control box	MWRF-test	MW200-RFCB	MW220111 ANCI	2022-05-13	2023-05-12
Radio Frequency control box	MWRF-test	MW200-RFCB 2#	/	2022-05-13	2023-05-12

Test Equipment of Radiated emissions below 1GHz					
Equipment	Manufacturer	Model No.	Serial No.	Last Cal.	Due Date
EMI Test Receiver	ROHDE&SCHWARZ	ESCI	100302	2022/5/13	2024/5/10
Bilog Antenna	Schwarzbeck	VULB9163	VULB9163-1290	2022/12/12	2023/12/11
RF Cable	ZKJC	ZT06S-NJ-NJ-11M	19060398	2022/5/13	2024/5/10
RF Cable	ZKJC	ZT06S-NJ-NJ-0.5M	19060400	2022/5/13	2024/5/10
RF Cable	ZKJC	ZT06S-NJ-NJ-2.5M	19060404	2022/5/13	2024/5/10
EMI Test Receiver	ROHDE&SCHWARZ	ESPI7	100502	2022/10/8	2023/10/7
3m Semi-anechoic Chamber	Keysight	9m*6m*6m	N/A	2021/11/13	2024/11/12

Test Equipment of Radiated emissions above 1GHz					
Equipment	Manufacturer	Model No.	Serial No.	Last Cal.	Due Date
Low noise Amplifiers	A-INFO	LA1018N4009	J1013130524001	2022/5/13	2024/5/10
Horn antenna	A-INFO	LB-10180-SF	J2031090612123	2022/5/15	2023/5/14
RF Cable	ZKJC	ZT26-NJ-NJ-11M	19060401	2022/5/13	2024/5/10
RF Cable	ZKJC	ZT26-NJ-NJ-2.5M	19060402	2022/5/13	2024/5/10
RF Cable	ZKJC	ZT26-NJ-NJ-0.5M	19060403	2022/5/13	2024/5/10
Spectrum Analyzer	Rohde & Schwarz	FSV40	US40240623	2022-10-29	2023-10-28
3m Semi-anechoic Chamber	Keysight	9m*6m*6m	N/A	2021/11/13	2024/11/12
Test Software	Farad	EZ-EMC (Ver.FA-03A2RE)	N/A	N/A	N/A

Test Equipment of Conducted emissions					
Equipment	Manufacturer	Model No.	Serial No.	Last Cal.	Due Date
EMI Test Receiver	ROHDE&SCH WARZ	ESCI	101358	2022/5/13	2024/5/10
1# Shielded Room	chengyu	8m*4m*3.3m	N/A	2022/11/22	2025/11/21
LISN	ROHDE&SCH WARZ	ENV216	101413	2022/10/8	2023/10/7
Test Software	Farad	EZ-EMC (Ver.ANCI-3A1)	N/A	N/A	N/A
RF Cable	N/A	ZT06S-NJ-NJ-2.5M	19044022	2022/05/13	2023/05/12

## 7. ANTENNA PORT TEST RESULTS

### 7.1. CONDUCTED OUTPUT POWER

#### LIMITS

CFR 47 FCC Part15 (15.247) Subpart C ISED RSS-247 ISSUE 2			
Section	Test Item	Limit	Frequency Range (MHz)
CFR 47 FCC 15.247(b)(3) ISED RSS-247 5.4 (d)	Peak Conduct Output Power	1 watt or 30 dBm	2400-2483.5

#### TEST PROCEDURE

Connect the EUT to a low loss RF cable from the antenna port to the power sensor (video bandwidth is greater than the occupied bandwidth).

Measure peak emission level, the indicated level is the peak output power, after any corrections for external attenuators and cables.

#### TEST ENVIRONMENT

Temperature	24°C	Relative Humidity	56%
Atmosphere Pressure	101kPa		

#### TEST RESULTS

Please refer to section "Test Data" - Appendix A

## 7.2. 6DB BANDWIDTH AND 99% OCCUPIED BANDWIDTH

### LIMITS

CFR 47 FCC Part15 (15.247) Subpart C ISED RSS-247 ISSUE 2			
Section	Test Item	Limit	Frequency Range (MHz)
CFR 47 FCC 15.247(a)(2) ISED RSS-247 5.2 (a)	6 dB Bandwidth	$\geq 500$ kHz	2400-2483.5
ISED RSS-Gen Clause 6.7	99 % Occupied Bandwidth	For reporting purposes only.	2400-2483.5

### TEST PROCEDURE

Refer to ANSI C63.10-2013 clause 11.8 for DTS bandwidth and clause 6.9 for Occupied Bandwidth.

Connect the EUT to the spectrum analyser and use the following settings:

Center Frequency	The center frequency of the channel under test
Frequency Span	For 6 dB Bandwidth: Enough to capture all products of the modulation carrier emission For 99 % Occupied Bandwidth: Between 1.5 times and 5.0 times the OBW
Detector	Peak
RBW	For 6 dB Bandwidth: 100 kHz For 99 % Occupied Bandwidth: 1 % to 5 % of the occupied bandwidth
VBW	For 6 dB Bandwidth: $\geq 3 \times$ RBW For 99 % Occupied Bandwidth: $\geq 3 \times$ RBW
Trace	Max hold
Sweep	Auto couple

a) Use the 99 % power bandwidth function of the instrument, allow the trace to stabilize and report the measured bandwidth.

b) Allow the trace to stabilize and measure the maximum width of the emission that is constrained by the frequencies associated with the two outermost amplitude points (upper and lower frequencies) that are attenuated by 6 dB relative to the maximum level measured in the fundamental emission.

### TEST ENVIRONMENT

Temperature	24°C	Relative Humidity	55%
Atmosphere Pressure	101kPa		

**TEST RESULTS**

Please refer to section "Test Data" - Appendix A

### 7.3. POWER SPECTRAL DENSITY

#### LIMITS

CFR 47 FCC Part15 (15.247) Subpart C ISED RSS-247 ISSUE 2			
Section	Test Item	Limit	Frequency Range (MHz)
CFR 47 FCC §15.247 (e) ISED RSS-247 5.2 (b)	Power Spectral Density	8 dBm in any 3 kHz band	2400-2483.5

#### TEST PROCEDURE

Refer to ANSI C63.10-2013 clause 11.10.

Connect the EUT to the spectrum analyser and use the following settings:

Center Frequency	The center frequency of the channel under test
Detector	PEAK
RBW	$3 \text{ kHz} \leq \text{RBW} \leq 100 \text{ kHz}$
VBW	$\geq 3 \times \text{RBW}$
Span	1.5 x DTS bandwidth
Trace	Max hold
Sweep time	Auto couple

Allow trace to fully stabilize and use the peak marker function to determine the maximum amplitude level within the RBW.

If measured value exceeds limit, reduce RBW (no less than 3 kHz) and repeat.

#### TEST ENVIRONMENT

Temperature	24°C	Relative Humidity	55%
Atmosphere Pressure	101kPa		

#### TEST RESULTS

Please refer to section "Test Data" - Appendix A

## 7.4. CONDUCTED BAND EDGE AND SPURIOUS EMISSION

### LIMITS

CFR 47 FCC Part15 (15.247) Subpart C ISED RSS-247 ISSUE 2		
Section	Test Item	Limit
CFR 47 FCC §15.247 (d) ISED RSS-247 5.5	Conducted Bandedge and Spurious Emissions	at least 20 dB below that in the 100 kHz bandwidth within the band that contains the highest level of the desired power

### TEST PROCEDURE

Refer to ANSI C63.10-2013 clause 11.11 and 11.13.

Connect the EUT to the spectrum analyser and use the following settings for reference level measurement:

Center Frequency	The center frequency of the channel under test
Detector	Peak
RBW	100 kHz
VBW	$\geq 3 \times \text{RBW}$
Span	1.5 x DTS bandwidth
Trace	Max hold
Sweep time	Auto couple.

Allow trace to fully stabilize and use the peak marker function to determine the maximum PSD level.

Change the settings for emission level measurement:

Span	Set the center frequency and span to encompass frequency range to be measured
Detector	Peak
RBW	100 kHz
VBW	$\geq 3 \times \text{RBW}$
measurement points	$\geq \text{span}/\text{RBW}$
Trace	Max hold
Sweep time	Auto couple.

Allow trace to fully stabilize and use the peak marker function to determine the maximum PSD level. Ensure that the amplitude of all unwanted emissions outside of the authorized frequency band (excluding restricted frequency bands) is attenuated by at least the minimum requirements specified in 11.11.

### TEST ENVIRONMENT

Temperature	24°C	Relative Humidity	55%
Atmosphere Pressure	101kPa		



**TEST RESULTS**

Please refer to section "Test Data" - Appendix A

## 7.5. DUTY CYCLE

### LIMITS

None; for reporting purposes only.

### TEST PROCEDURE

Refer to ANSI C63.10-2013 clause 11.6 Zero – Span Spectrum Analyzer method.

### TEST ENVIRONMENT

Temperature	24°C	Relative Humidity	55%
Atmosphere Pressure	101kPa		

### TEST RESULTS

Please refer to section "Test Data" - Appendix A

## 8. RADIATED TEST RESULTS

### LIMITS

Please refer to CFR 47 FCC §15.205 and §15.209.

Please refer to ISED RSS-GEN Clause 8.9 and Clause 8.10.

Radiation Disturbance Test Limit for FCC (Class B) (9 kHz ~ 1 GHz)

Emissions radiated outside of the specified frequency bands above 30 MHz			
Frequency Range (MHz)	Field Strength Limit (uV/m) at 3 m	Field Strength Limit (dBuV/m) at 3 m	
		Quasi-Peak	
30 - 88	100	40	
88 - 216	150	43.5	
216 - 960	200	46	
Above 960	500	54	
Above 1000	500	Peak	Average
		74	54

FCC Emissions radiated outside of the specified frequency bands below 30 MHz		
Frequency (MHz)	Field strength (microvolts/meter)	Measurement distance (meters)
0.009-0.490	$2400/F(\text{kHz})$	300
0.490-1.705	$24000/F(\text{kHz})$	30
1.705-30.0	30	30

ISED General field strength limits at frequencies below 30 MHz

Table 6 – General field strength limits at frequencies below 30 MHz		
Frequency	Magnetic field strength (H-Field) (μA/m)	Measurement distance (m)
9 - 490 kHz <sup>Note 1</sup>	$6.37/F$ (F in kHz)	300
490 - 1705 kHz	$63.7/F$ (F in kHz)	30
1.705 - 30 MHz	0.08	30

**Note 1:** The emission limits for the ranges 9-90 kHz and 110-490 kHz are based on measurements employing a linear average detector.

ISED Restricted bands please refer to ISED RSS-GEN Clause 8.10

MHz	MHz	GHz
0.090 - 0.110	149.9 - 150.05	9.0 - 9.2
0.495 - 0.505	156.52475 - 156.52525	9.3 - 9.5
2.1735 - 2.1905	156.7 - 156.9	10.6 - 12.7
3.020 - 3.026	162.0125 - 167.17	13.25 - 13.4
4.125 - 4.128	167.72 - 173.2	14.47 - 14.5
4.17725 - 4.17775	240 - 285	15.35 - 16.2
4.20725 - 4.20775	322 - 335.4	17.7 - 21.4
5.677 - 5.683	399.9 - 410	22.01 - 23.12
6.215 - 6.218	608 - 614	23.6 - 24.0
6.26775 - 6.26825	960 - 1427	31.2 - 31.8
6.31175 - 6.31225	1435 - 1626.5	36.43 - 36.5
8.291 - 8.294	1645.5 - 1646.5	Above 38.6
8.362 - 8.366	1660 - 1710	
8.37625 - 8.38675	1718.8 - 1722.2	
8.41425 - 8.41475	2200 - 2300	
12.29 - 12.293	2310 - 2390	
12.51975 - 12.52025	2483.5 - 2500	
12.57675 - 12.57725	2655 - 2900	
13.36 - 13.41	3260 - 3267	
16.42 - 16.423	3332 - 3339	
16.69475 - 16.69525	3345.8 - 3358	
16.80425 - 16.80475	3500 - 4400	
25.5 - 25.67	4500 - 5150	
37.5 - 38.25	5350 - 5460	
73 - 74.6	7250 - 7750	
74.8 - 75.2	8025 - 8500	
108 - 138		

**Note 1:** Certain frequency bands listed in table 7 and in bands above 38.6 GHz are designated for licence-exempt applications. These frequency bands and the requirements that apply to related devices are set out in the 200 and 300 series of RSSs.

FCC Restricted bands of operation refer to FCC §15.205 (a):

MHz	MHz	MHz	GHz
0.090-0.110	16.42-16.423	399.9-410	4.5-5.15
<sup>1</sup> 0.495-0.505	16.69475-16.69525	608-614	5.35-5.46
2.1735-2.1905	16.80425-16.80475	960-1240	7.25-7.75
4.125-4.128	25.5-25.67	1300-1427	8.025-8.5
4.17725-4.17775	37.5-38.25	1435-1626.5	9.0-9.2
4.20725-4.20775	73-74.6	1645.5-1646.5	9.3-9.5
6.215-6.218	74.8-75.2	1660-1710	10.6-12.7
6.26775-6.26825	108-121.94	1718.8-1722.2	13.25-13.4
6.31175-6.31225	123-138	2200-2300	14.47-14.5
8.291-8.294	149.9-150.05	2310-2390	15.35-16.2
8.362-8.366	156.52475-156.52525	2483.5-2500	17.7-21.4
8.37625-8.38675	156.7-156.9	2690-2900	22.01-23.12
8.41425-8.41475	162.0125-167.17	3260-3267	23.6-24.0
12.29-12.293	167.72-173.2	3332-3339	31.2-31.8
12.51975-12.52025	240-285	3345.8-3358	36.43-36.5
12.57675-12.57725	322-335.4	3600-4400	( <sup>2</sup> )
13.36-13.41			

Note: <sup>1</sup>Until February 1, 1999, this restricted band shall be 0.490-0.510 MHz.

<sup>2</sup>Above 38.6c

**TEST PROCEDURE**

Below 30 MHz

The setting of the spectrum analyser

RBW	200 Hz (From 9 kHz to 0.15 MHz)/ 9 kHz (From 0.15 MHz to 30 MHz)
VBW	200 Hz (From 9 kHz to 0.15 MHz)/ 9 kHz (From 0.15 MHz to 30 MHz)
Sweep	Auto

1. The testing follows the guidelines in ANSI C63.10-2013 clause 6.4.
2. The EUT was arranged to its worst case and then turntable (from 0 degree to 360 degrees) to find the maximum reading. A pre-amp and a high pass filter are used for the test in order to get better signal level. Both Horizontal, Face-on and Face-off polarizations of the antenna are set to make the measurement.
3. The EUT was placed on a turntable with 80 cm above ground.
4. The EUT was set 3 meters from the interference receiving antenna, which was mounted on the top of a 1 m height antenna tower.
5. The radiated emission limits are based on measurements employing a CISPR quasi-peak detector except for the frequency bands 9-90 kHz, 110-490 kHz and above 1000 MHz Radiated emission limits in these three bands are based on measurements employing an average detector.
6. For measurement below 1 GHz, the initial step in collecting conducted emission data is a spectrum analyzer peak detector mode pre-scanning the measurement frequency range. Significant peaks are then marked and then Quasi Peak and average detector mode re-measured. If the emission level of the EUT measured by the peak detector is 3 dB lower than the applicable limit, the peak emission level will be reported. Otherwise, the emission measurement will be repeated using the quasi-peak and average detector and reported.
7. Although these tests were performed other than open field site, adequate comparison measurements were confirmed against 30m open field site. Therefore sufficient tests were made to demonstrate that the alternative site produces results that correlate with the ones of tests made in an open field site based on KDB 414788.
8. The limits in CFR 47, Part 15, Subpart C, paragraph 15.209 (a), are identical to those in RSS-GEN Section 8.9, Table 6, since the measurements are performed in terms of magnetic field strength and converted to electric field strength levels (as reported in the table) using the free space impedance of  $377\Omega$ . For example, the measurement frequency X KHz resulted in a level of Y dBuV/m, which is equivalent to  $Y-51.5 = Z$  dBuA/m, which has the same margin, W dB, to the corresponding RSS-GEN Table 6 limit as it has to be 15.209(a) limit.

Below 1 GHz and above 30 MHz

The setting of the spectrum analyser

RBW	120 kHz
VBW	300 kHz
Sweep	Auto
Detector	Peak/QP
Trace	Max hold

1. The testing follows the guidelines in ANSI C63.10-2013 clause 6.5.

2. The EUT was arranged to its worst case and then tune the antenna tower (from 1 m to 4 m) and turntable (from 0 degree to 360 degrees) to find the maximum reading. A pre-amp and a high pass filter are used for the test in order to get better signal level. Both horizontal and vertical polarizations of the antenna are set to make the measurement.
3. The EUT was placed on a turntable with 80 cm above ground.
4. The EUT was set 3 meters from the interference receiving antenna, which was mounted on the top of a variable height antenna tower.
5. For measurement below 1 GHz, the initial step in collecting conducted emission data is a spectrum analyzer peak detector mode pre-scanning the measurement frequency range. Significant peaks are then marked and then Quasi Peak detector mode re-measured. If the emission level of the EUT measured by the peak detector is 3 dB lower than the applicable limit, the peak emission level will be reported. Otherwise, the emission measurement will be repeated using the quasi-peak detector and reported.

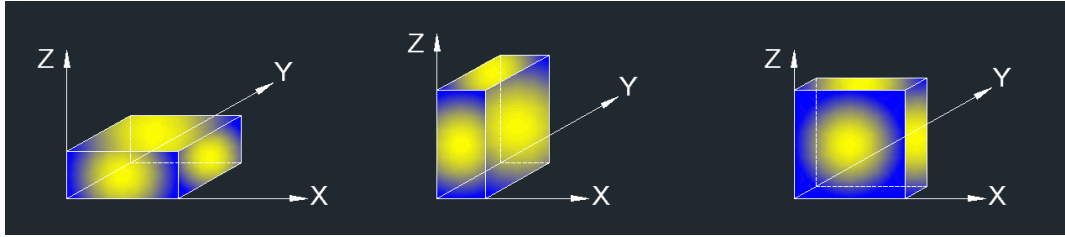
Above 1G

The setting of the spectrum analyser

RBW	1 MHz
VBW	PEAK: 3 MHz AVG: see note 6
Sweep	Auto
Detector	Peak
Trace	Max hold

1. The testing follows the guidelines in ANSI C63.10-2013 clause 6.6.
2. The EUT was arranged to its worst case and then tune the antenna tower (from 1 m to 4 m) and turntable (from 0 degree to 360 degrees) to find the maximum reading. A pre-amp and a high pass filter are used for the test in order to get better signal level. Both horizontal and vertical polarizations of the antenna are set to make the measurement.
3. The EUT was placed on a turntable with 1.5 m above ground.
4. The EUT was set 3 meters from the interference receiving antenna, which was mounted on the top of a variable height antenna tower.
5. For measurement above 1 GHz, the emission measurement will be measured by the peak detector. This peak level, once corrected, must comply with the limit specified in Section 15.209.
6. For measurements above 1 GHz the resolution bandwidth is set to 1 MHz, then the video bandwidth is set to 3 MHz for peak measurements and 1 MHz resolution bandwidth with 1/T video bandwidth with peak detector for average measurements. For the Duty Cycle please refer to clause 7.1.ON TIME AND DUTY CYCLE.

X axis, Y axis, Z axis positions:



Note 1: For all radiated test, EUT in each of three orthogonal axis emissions had been tested, but only the worst case (X axis) data recorded in the report.

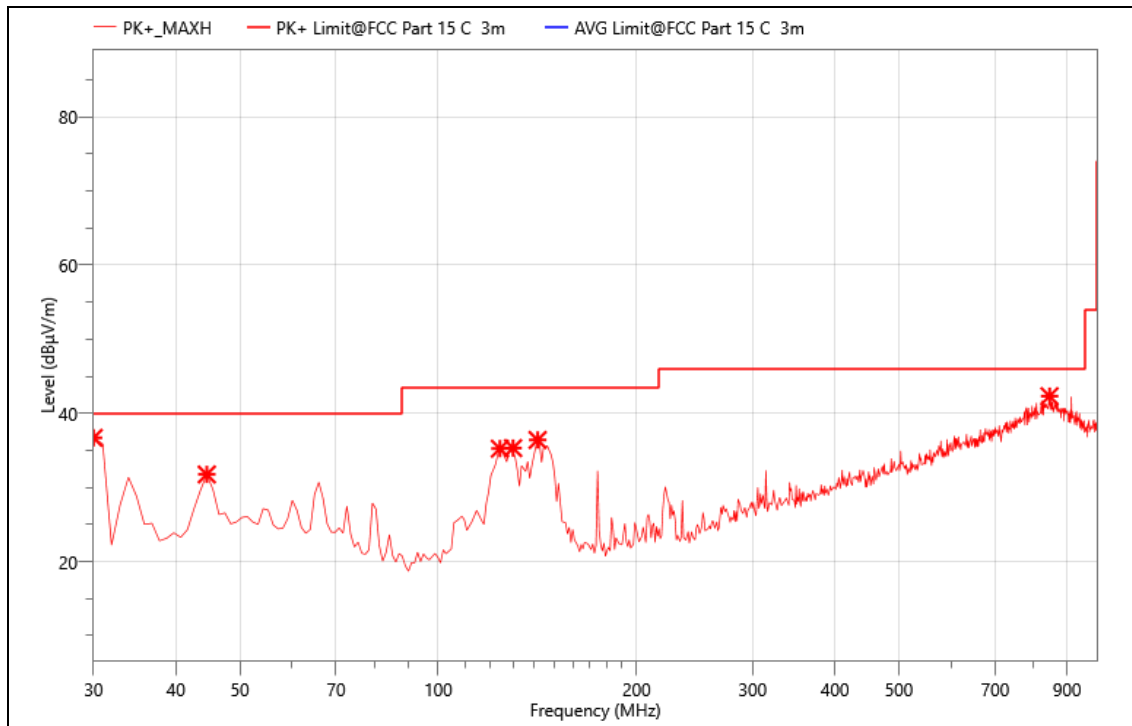
#### **TEST ENVIRONMENT**

Temperature	24°C	Relative Humidity	55%
Atmosphere Pressure	101kPa		

#### **TEST RESULTS**

##### **Radiated Spurious Emission :**

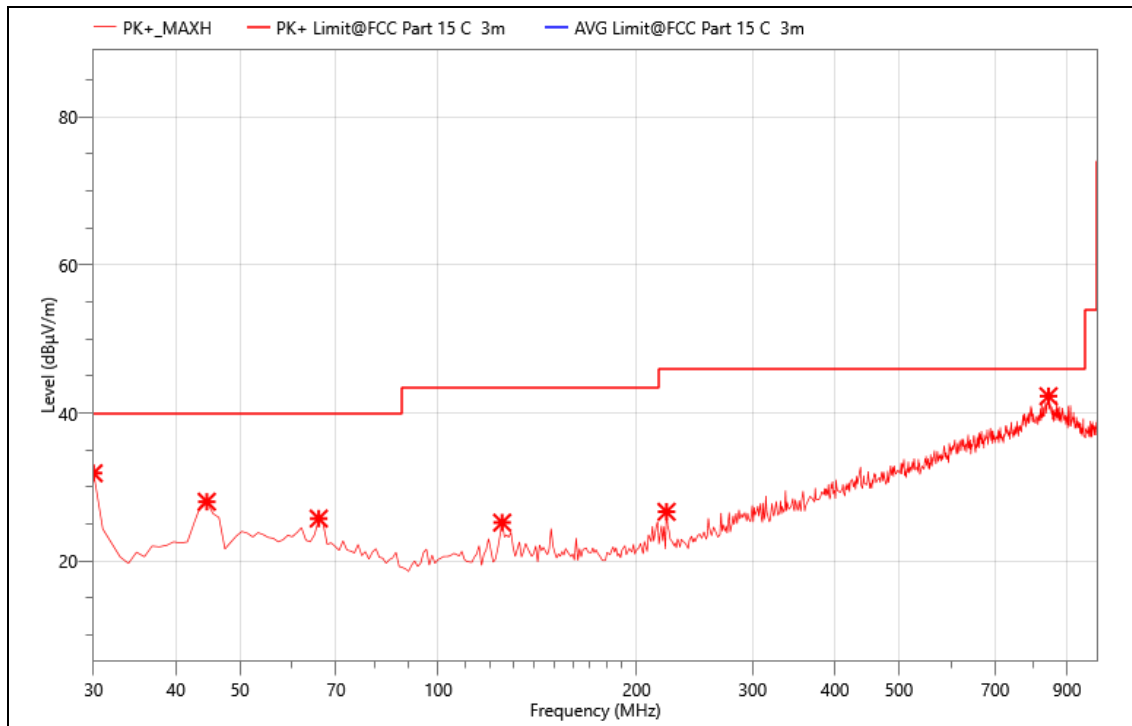
The worst data of the mode (GFSK 2480MHz) are recorded in the following pages



### Critical\_Freqs

No.	Freq. (MHz)	Reading (dBμV)	Meas. (dBμV/m)	Limit (dBμV/m)	Margin (dBμV/m)	Det.	Height (cm)	Pol.	Azimuth (deg)	Corr. (dB)
1	30.000	43.02	36.70	40.00	3.30	PK	150.0	V	360.0	-
2	44.550	35.98	31.76	40.00	8.24	PK	150.0	V	360.0	-
3	124.09	40.99	35.24	43.50	8.26	PK	150.0	V	360.0	-
4	129.91	41.06	35.32	43.50	8.18	PK	150.0	V	360.0	-
5	141.55	42.05	36.41	43.50	7.09	PK	150.0	V	360.0	-
6	846.74	28.33	42.33	46.00	3.67	PK	150.0	V	360.0	14





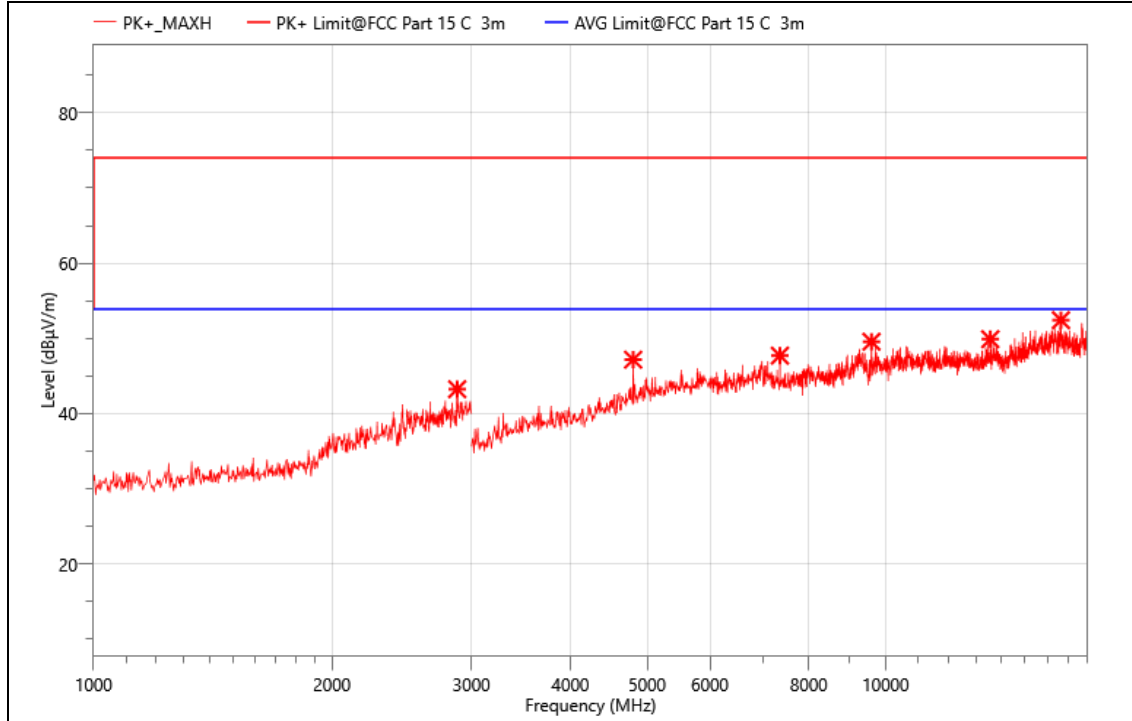
### Critical\_Freqs

No.	Freq. (MHz)	Reading (dBµV)	Meas. (dBµV/m)	Limit (dBµV/m)	Margin (dBµV/m)	Det.	Height (cm)	Pol.	Azimuth (deg)	Corr. (dB)
1	30.000	38.19	31.87	40.00	8.13	PK+	150.0	H	360.0	-
2	44.550	32.24	28.02	40.00	11.98	PK+	150.0	H	360.0	-
3	65.890	29.53	25.75	40.00	14.25	PK+	150.0	H	360.0	-
4	125.060	31.03	25.20	43.50	18.30	PK+	150.0	H	360.0	-
5	222.060	31.13	26.66	46.00	19.34	PK+	150.0	H	360.0	-
6	843.830	28.27	42.27	46.00	3.73	PK+	150.0	H	360.0	14

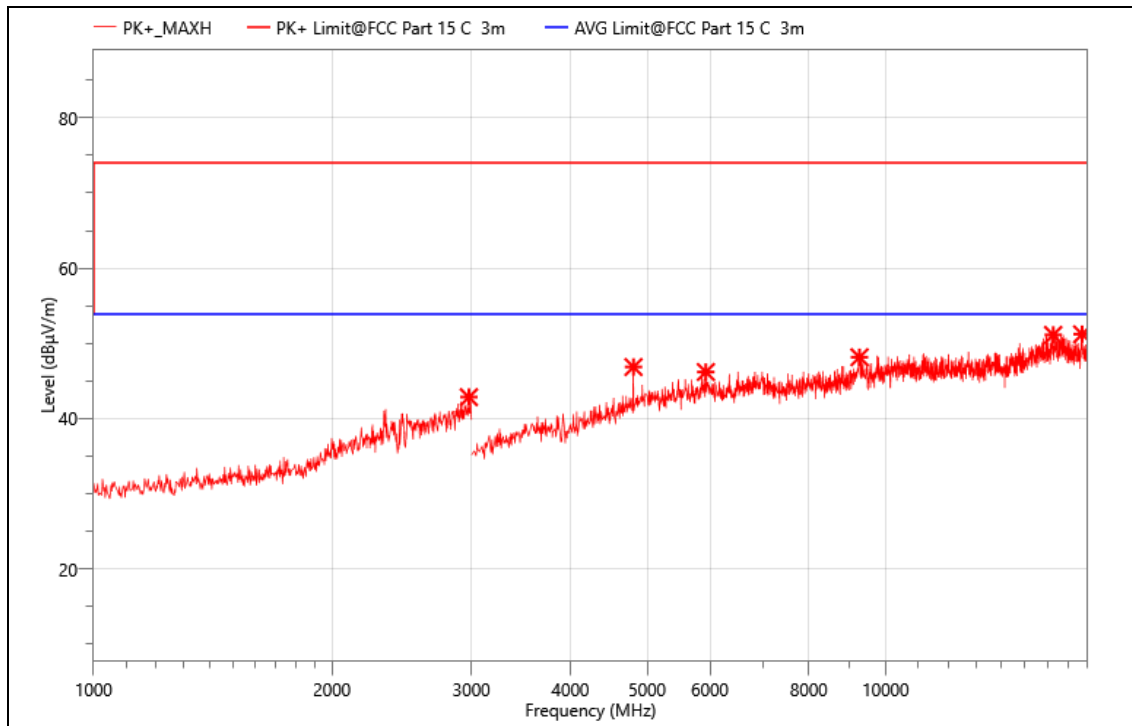
**Above 1000MHz~10<sup>th</sup> Harmonics:**

All the modulation modes were tested the data of the worst mode are recorded in the following pages and the others modulation methods do not exceed the limits. The frequency range from 1GHz to 25GHz is investigated.

Mode: TX2402

**Critical\_Freqs**

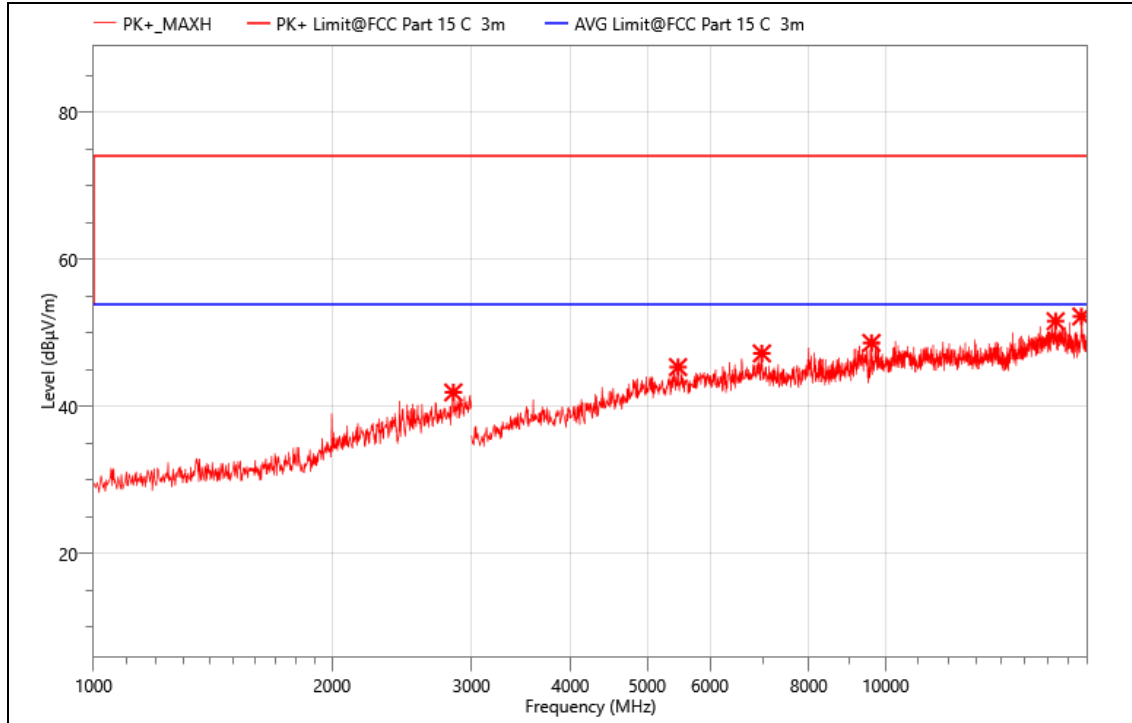
No.	Freq. (MHz)	Reading (dBμV)	Meas. (dBμV/m)	Limit (dBμV/m)	Margin (dBμV/m)	Det.	Height (cm)	Pol.	Azimuth (deg)	Corr. (dB)
1	2878.000	53.79	43.24	74.00	30.76	PK+	150.0	V	-0.0	-
2	4800.000	56.89	47.17	74.00	26.83	PK+	150.0	V	-0.0	-9.72
3	7355.000	51.13	47.71	74.00	26.29	PK+	150.0	V	-0.0	-3.42
4	9600.000	50.68	49.56	74.00	24.44	PK+	150.0	V	-0.0	-1.12
5	13560.000	48.38	49.90	74.00	24.10	PK+	150.0	V	-0.0	1.52
6	16650.000	48.08	52.43	74.00	21.57	PK+	150.0	V	-0.0	4.35



### Critical\_Freqs

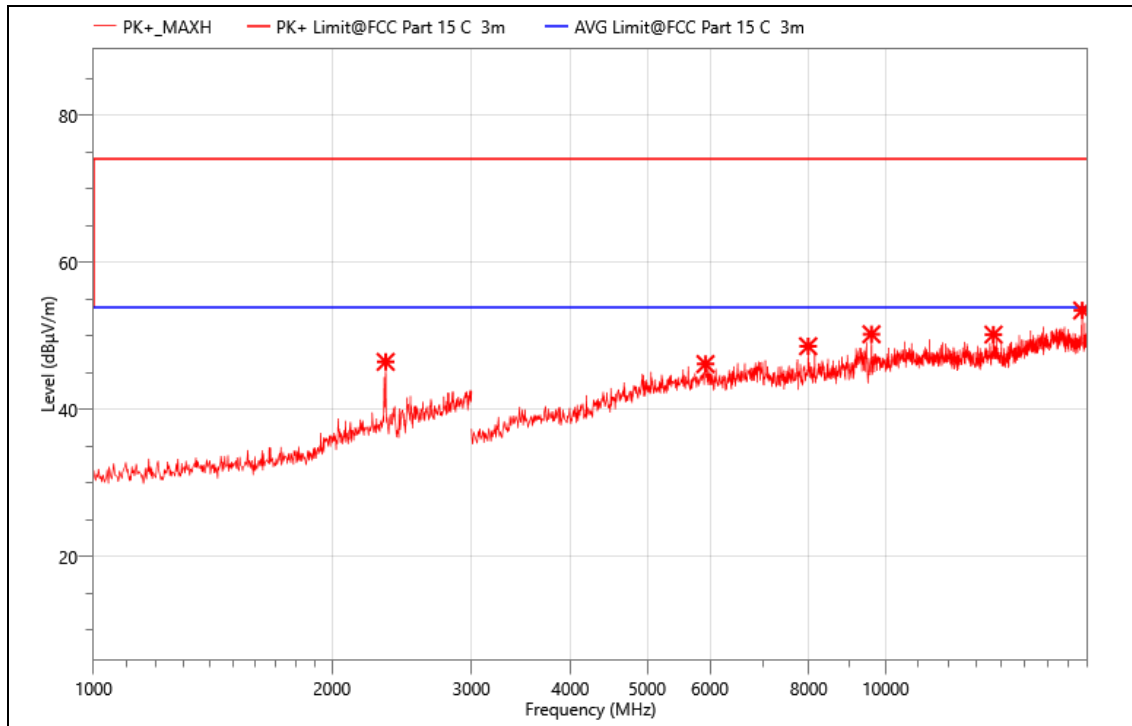
No.	Freq. (MHz)	Reading (dBµV)	Meas. (dBµV/m)	Limit (dBµV/m)	Margin (dBµV/m)	Det.	Height (cm)	Pol.	Azimuth (deg)	Corr. (dB)
1	2978.000	52.16	42.85	74.00	31.15	PK+	150.0	H	-0.0	-
2	4805.000	56.50	46.86	74.00	27.14	PK+	150.0	H	-0.0	-
3	5930.000	51.70	46.20	74.00	27.80	PK+	150.0	H	-0.0	-5.5
4	9270.000	48.75	48.16	74.00	25.84	PK+	150.0	H	-0.0	-
5	16280.000	47.50	51.13	74.00	22.87	PK+	150.0	H	-0.0	3.63
6	17710.000	46.66	51.22	74.00	22.78	PK+	150.0	H	-0.0	4.56

Mode: TX2440



### Critical\_Freqs

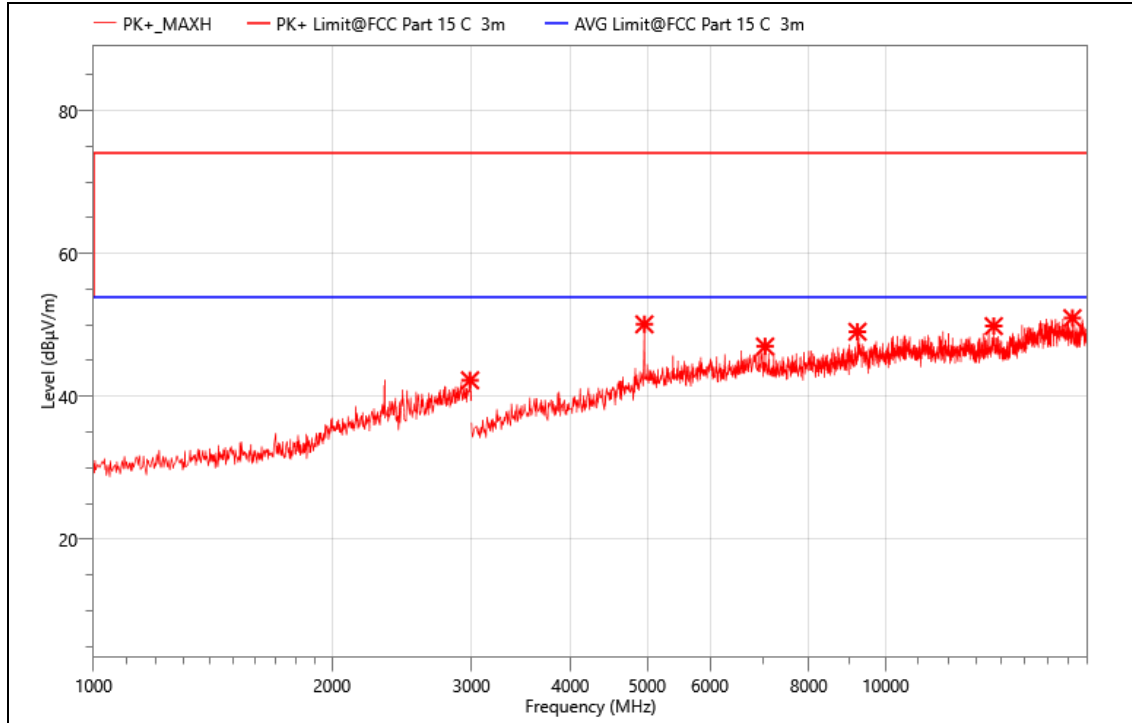
No.	Freq. (MHz)	Reading (dBμV)	Meas. (dBμV/m)	Limit (dBμV/m)	Margin (dBμV/m)	Det.	Height (cm)	Pol.	Azimuth (deg)	Corr. (dB)
1	2846.000	52.44	41.94	74.00	32.06	PK+	150.0	H	-0.0	-
2	5470.000	52.82	45.38	74.00	28.62	PK+	150.0	H	-0.0	-
3	6980.000	50.33	47.24	74.00	26.76	PK+	150.0	H	-0.0	-
4	9600.000	49.79	48.67	74.00	25.33	PK+	150.0	H	-0.0	-
5	16395.000	47.50	51.62	74.00	22.38	PK+	150.0	H	-0.0	4.12
6	17670.000	47.58	52.26	74.00	21.74	PK+	150.0	H	-0.0	4.68



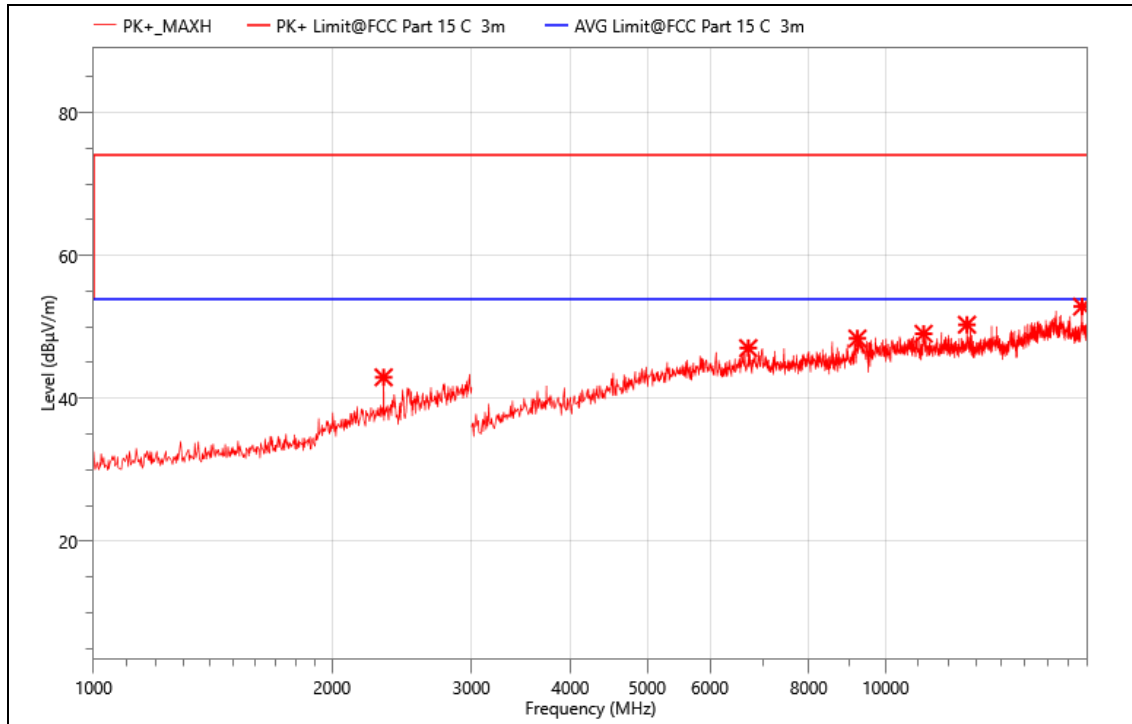
### Critical\_Freqs

No.	Freq. (MHz)	Reading (dBμV)	Meas. (dBμV/m)	Limit (dBμV/m)	Margin (dBμV/m)	Det.	Height (cm)	Pol.	Azimuth (deg)	Corr. (dB)
1	2338.000	58.97	46.50	74.00	27.50	PK+	150.0	V	-0.0	-
2	5925.000	51.66	46.20	74.00	27.80	PK+	150.0	V	-0.0	-5.46
3	7985.000	50.81	48.62	74.00	25.38	PK+	150.0	V	-0.0	-2.19
4	9600.000	51.37	50.25	74.00	23.75	PK+	150.0	V	-0.0	-1.12
5	13685.000	48.04	50.21	74.00	23.79	PK+	150.0	V	-0.0	2.17
6	17715.000	49.02	53.49	74.00	20.51	PK+	150.0	V	-0.0	4.47

Mode: TX2480

**Critical\_Freqs**

No.	Freq. (MHz)	Reading (dBµV)	Meas. (dBµV/m)	Limit (dBµV/m)	Margin (dBµV/m)	Det.	Height (cm)	Pol.	Azimuth (deg)	Corr. (dB)
1	2988.000	51.49	42.25	74.00	31.75	PK+	150.0	V	-0.0	-
2	4960.000	58.94	50.08	74.00	23.92	PK+	150.0	V	-0.0	-
3	7045.000	50.12	46.98	74.00	27.02	PK+	150.0	V	-0.0	-
4	9215.000	49.64	49.04	74.00	24.96	PK+	150.0	V	-0.0	-0.6
5	13695.000	47.53	49.83	74.00	24.17	PK+	150.0	V	-0.0	2.3
6	17215.000	47.53	50.94	74.00	23.06	PK+	150.0	V	-0.0	3.41



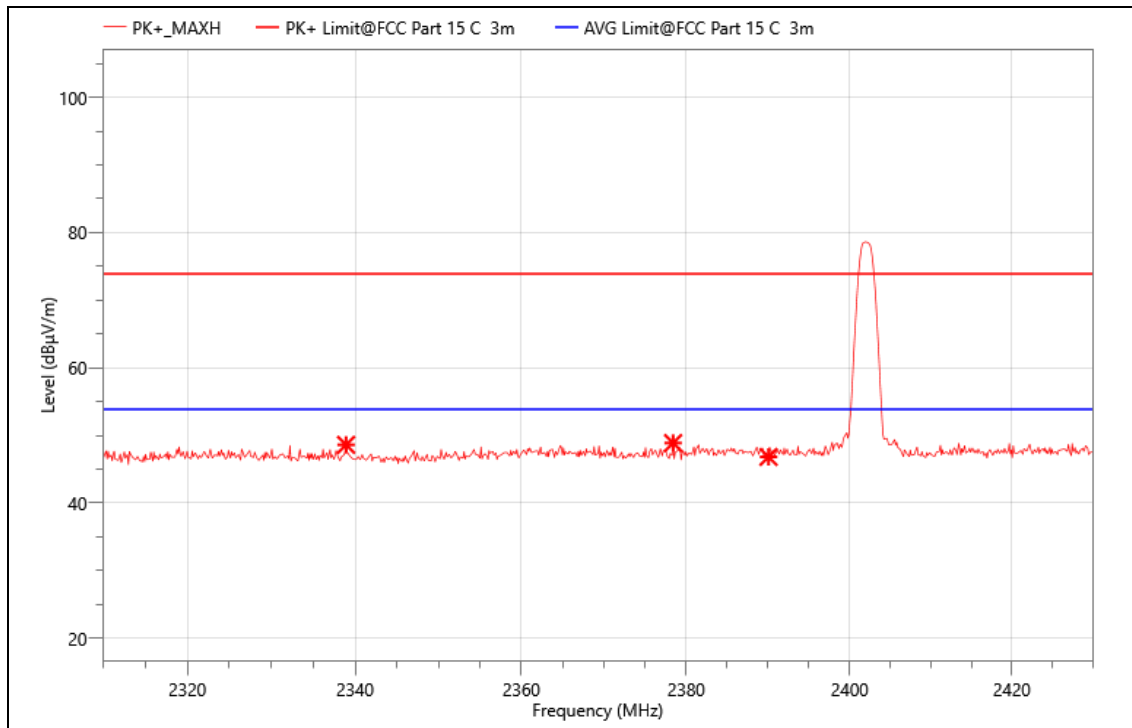
### Critical\_Freqs

No.	Freq. (MHz)	Reading (dBμV)	Meas. (dBμV/m)	Limit (dBμV/m)	Margin (dBμV/m)	Det.	Height (cm)	Pol.	Azimuth (deg)	Corr. (dB)
1	2324.000	55.78	42.94	74.00	31.06	PK+	150.0	H	-0.0	-
2	6710.000	51.18	47.03	74.00	26.97	PK+	150.0	H	-0.0	-4.15
3	9215.000	48.97	48.37	74.00	25.63	PK+	150.0	H	-0.0	-0.6
4	11170.000	48.25	49.04	74.00	24.96	PK+	150.0	H	-0.0	0.79
5	12670.000	49.68	50.30	74.00	23.70	PK+	150.0	H	-0.0	0.62
6	17705.000	48.17	52.83	74.00	21.17	PK+	150.0	H	-0.0	4.66

**Band edge:**

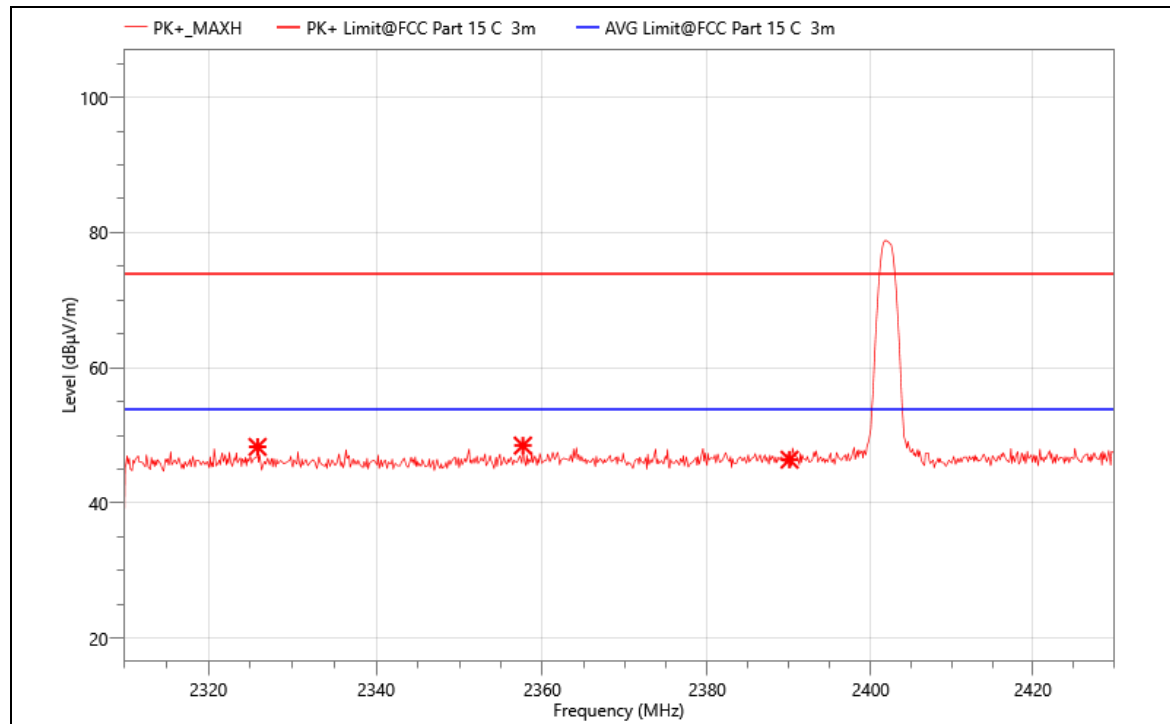
The worst data of the mode (GFSK) are recorded in the following pages.

Mode: TX2402

**Critical\_Freqs**

No.	Freq. (MHz)	Reading (dBμV)	Meas. (dBμV/m)	Limit (dBμV/m)	Margin (dBμV/m)	Det.	Height (cm)	Pol.	Azimuth (deg)	Corr. (dB)
1	2338.92	69.76	48.59	74.00	25.41	PK	150.0	H	-0.0	-
2	2378.40	69.98	48.86	74.00	25.14	PK	150.0	H	-0.0	-
3	2390.04	67.85	46.81	74.00	27.19	PK	150.0	H	-0.0	-

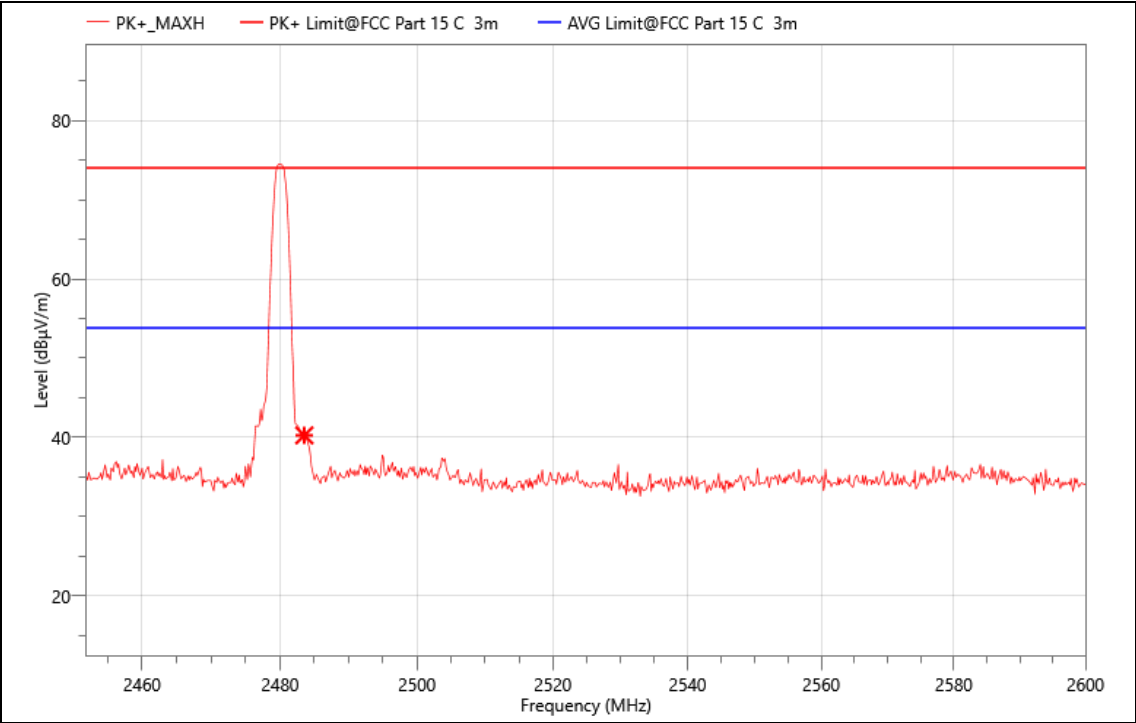




### Critical\_Freqs

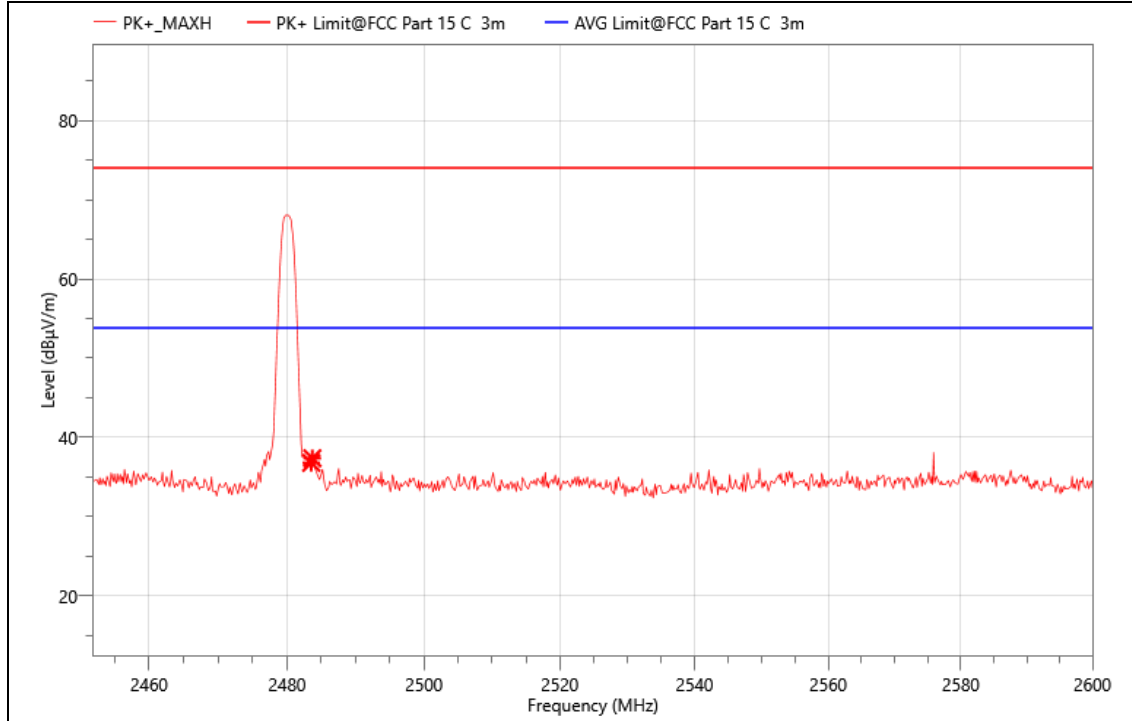
No.	Freq. (MHz)	Reading (dBμV)	Meas. (dBμV/m)	Limit (dBμV/m)	Margin (dBμV/m)	Det.	Height (cm)	Pol.	Azimuth (deg)	Corr. (dB)
1	2325.840	69.66	48.29	74.00	25.71	PK+	150.0	V	-0.0	-
2	2357.640	69.52	48.49	74.00	25.51	PK+	150.0	V	-0.0	-
3	2390.040	67.44	46.40	74.00	27.60	PK+	150.0	V	-0.0	-

Mode: TX2480



Critical\_Freqs

No.	Freq. (MHz)	Reading (dBµV)	Meas. (dBµV/m)	Limit (dBµV/m)	Margin (dBµV/m)	Det.	Height (cm)	Pol.	Azimuth (deg)	Corr. (dB)
1	2483.524	60.92	40.25	74.00	33.75	PK+	150.0	H	-0.0	-



### Critical\_Freqs

No.	Freq. (MHz)	Reading (dBμV)	Meas. (dBμV/m)	Limit (dBμV/m)	Margin (dBμV/m)	Det.	Height (cm)	Pol.	Azimuth (deg)	Corr. (dB)
1	2483.524	57.45	36.78	74.00	37.22	PK+	150.0	V	-0.0	-
2	2483.672	58.03	37.36	74.00	36.64	PK+	150.0	V	-0.0	-

## 9. ANTENNA REQUIREMENT

### REQUIREMENT

The EUT'S antenna is met the requirement of FCC part 15C section 15.203 and 15.247.

FCC part 15C section 15.247 requirements:

Systems operating in the 2402-2480MHz band that are used exclusively for fixed, point-to-point operations may employ transmitting antennas with directional gain greater than 6dBi provided the maximum peak output power of the intentional radiator is reduced by 1dB for every 3dB that the directional gain of the antenna exceeds 6dBi.

### DESCRIPTION

Pass

## 10. AC POWER LINE CONDUCTED EMISSION

### LIMITS

Please refer to CFR 47 FCC §15.207 (a) and ISED RSS-Gen Clause 8.8

FREQUENCY (MHz)	Quasi-peak	Average
0.15 -0.5	66 - 56 *	56 - 46 *
0.50 -5.0	56.00	46.00
5.0 -30.0	60.00	50.00

### TEST PROCEDURE

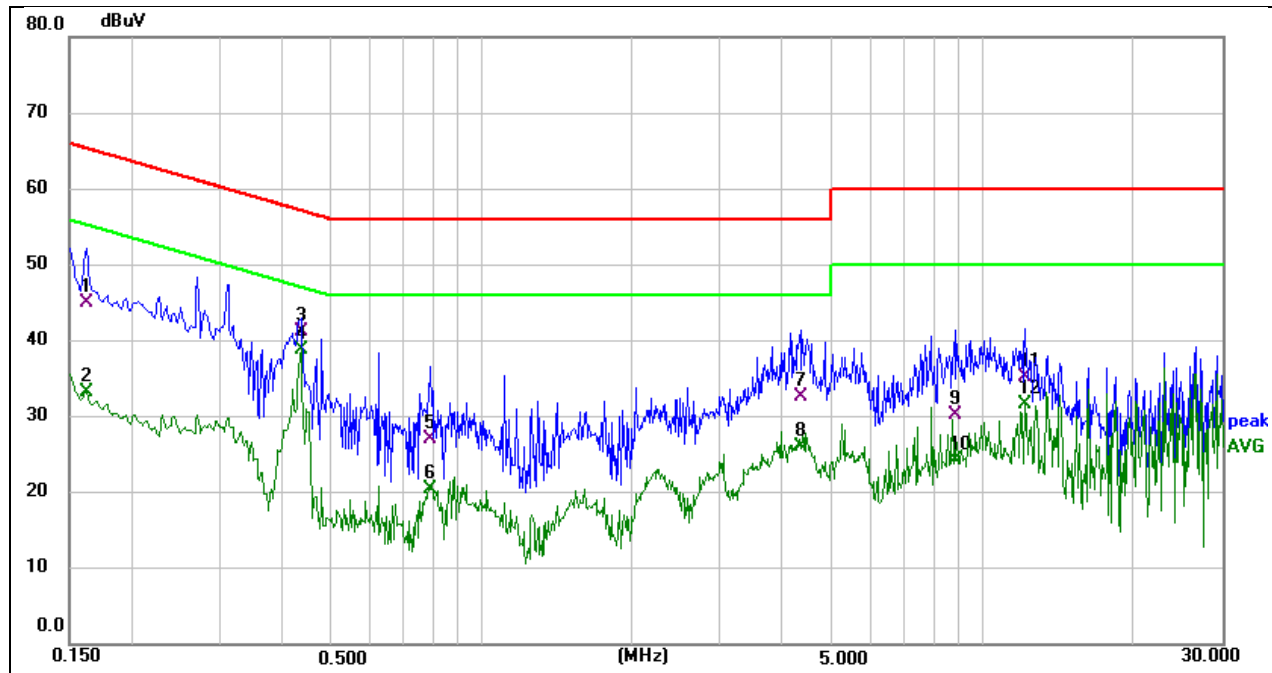
The EUT is put on a table of non-conducting material that is 80 cm high. The vertical conducting wall of shielding is located 40 cm to the rear of the EUT. The power line of the EUT is connected to the AC mains through a Artificial Mains Network (A.M.N.). A EMI Measurement Receiver (R&S Test Receiver ESR3) is used to test the emissions from both sides of AC line. According to the requirements in Section 6.2 of ANSI C63.10-2013. Conducted emissions from the EUT measured in the frequency range between 0.15 MHz and 30 MHz using CISPR Quasi-Peak and average detector mode. The bandwidth of EMI test receiver is set at 9 kHz.

The arrangement of the equipment is installed to meet the standards and operating in a manner, which tends to maximize its emission characteristics in a normal application.

### TEST ENVIRONMENT

Temperature	26°C	Relative Humidity	54.3%
Atmosphere Pressure	101kPa		

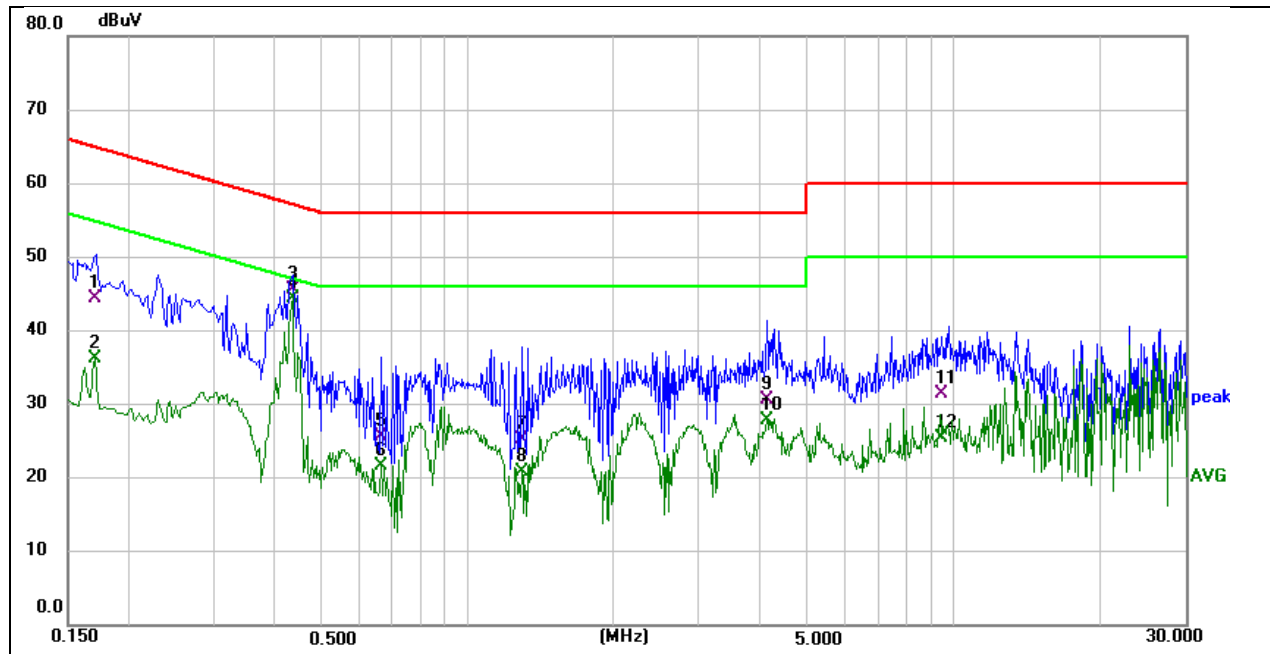
### TEST RESULTS



<b>Site:</b>		<b>Phase:</b> N	<b>Temperature(C):</b> 26(C)
<b>Limit:</b>	FCC PART 15C Conduction(QP)		<b>Humidity(%):</b> 54.3%
<b>EUT:</b>	Wi-Fi HomeBase	<b>Test Time:</b>	2023/6/27 11:03:35
<b>M/N.:</b>	W331-H	<b>Power Rating:</b>	AC 230V/50Hz
<b>Mode:</b>	TX2480	<b>Test Engineer:</b>	Milo
<b>Note:</b>			

No.	Frequency (MHz)	Reading Level(dBuV)	Factor (dB)	Measure-ment(dBuV)	Limit (dBuV)	Margin (dB)	Detector	Comment
1	0.1620	34.35	10.58	44.93	65.36	-20.43	QP	
2	0.1620	22.65	10.58	33.23	55.36	-22.13	AVG	
3	0.4340	30.03	11.14	41.17	57.18	-16.01	QP	
4 *	0.4340	27.58	11.14	38.72	47.18	-8.46	AVG	
5	0.7900	15.25	11.88	27.13	56.00	-28.87	QP	
6	0.7900	8.62	11.88	20.50	46.00	-25.50	AVG	
7	4.3340	22.14	10.40	32.54	56.00	-23.46	QP	
8	4.3340	15.56	10.40	25.96	46.00	-20.04	AVG	
9	8.8220	19.67	10.59	30.26	60.00	-29.74	QP	
10	8.8220	13.69	10.59	24.28	50.00	-25.72	AVG	
11	12.1380	24.53	10.70	35.23	60.00	-24.77	QP	
12	12.1380	21.00	10.70	31.70	50.00	-18.30	AVG	

\*:Maximum data x:Over limit !:over margin



<b>Site:</b>		<b>Phase:</b> L1	<b>Temperature(C):</b> 26(C)
<b>Limit:</b>	FCC PART 15C Conduction(QP)		<b>Humidity(%):</b> 54.3%
<b>EUT:</b>	Wi-Fi HomeBase	<b>Test Time:</b>	2023/6/27 11:08:55
<b>M/N.:</b>	W331-H	<b>Power Rating:</b>	AC 230V/50Hz
<b>Mode:</b>	TX2480	<b>Test Engineer:</b>	Milo
<b>Note:</b>			

No.	Frequency (MHz)	Reading Level(dBuV)	Factor (dB)	Measure-ment(dBuV)	Limit (dBuV)	Margin (dB)	Detector	Comment
1	0.1700	33.77	10.66	44.43	64.96	-20.53	QP	
2	0.1700	25.53	10.66	36.19	54.96	-18.77	AVG	
3	0.4340	34.42	11.22	45.64	57.18	-11.54	QP	
4 *	0.4340	33.15	11.22	44.37	47.18	-2.81	AVG	
5	0.6620	13.96	11.69	25.65	56.00	-30.35	QP	
6	0.6620	10.00	11.69	21.69	46.00	-24.31	AVG	
7	1.2940	14.75	10.40	25.15	56.00	-30.85	QP	
8	1.2940	10.49	10.40	20.89	46.00	-25.11	AVG	
9	4.1340	20.14	10.46	30.60	56.00	-25.40	QP	
10	4.1340	17.28	10.46	27.74	46.00	-18.26	AVG	
11	9.4860	20.75	10.70	31.45	60.00	-28.55	QP	
12	9.4860	14.64	10.70	25.34	50.00	-24.66	AVG	

\*:Maximum data x:Over limit !:over margin

## 11. TEST DATA

Please refer to Appendix A

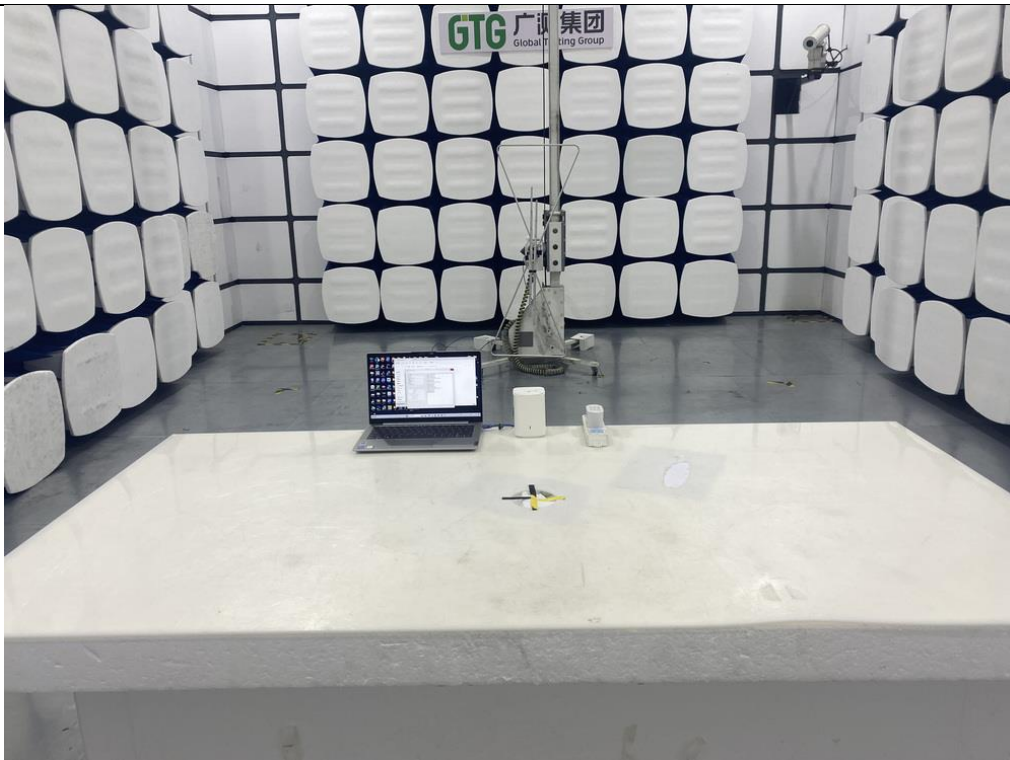


## APPENDIX: PHOTOGRAPHS OF TEST CONFIGURATION

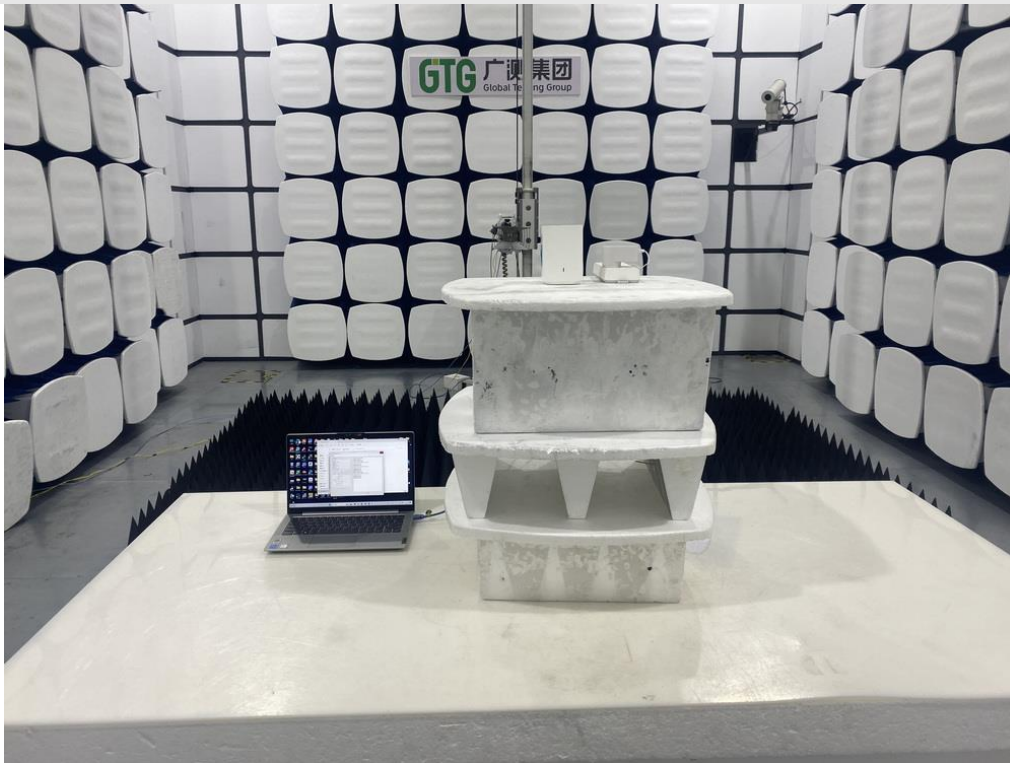
AC Power Line Conducted Emission



Radiated emissions below 1GHz



**Radiated emissions above 1GHz**



## APPENDIX: PHOTOGRAPHS OF THE EUT

External





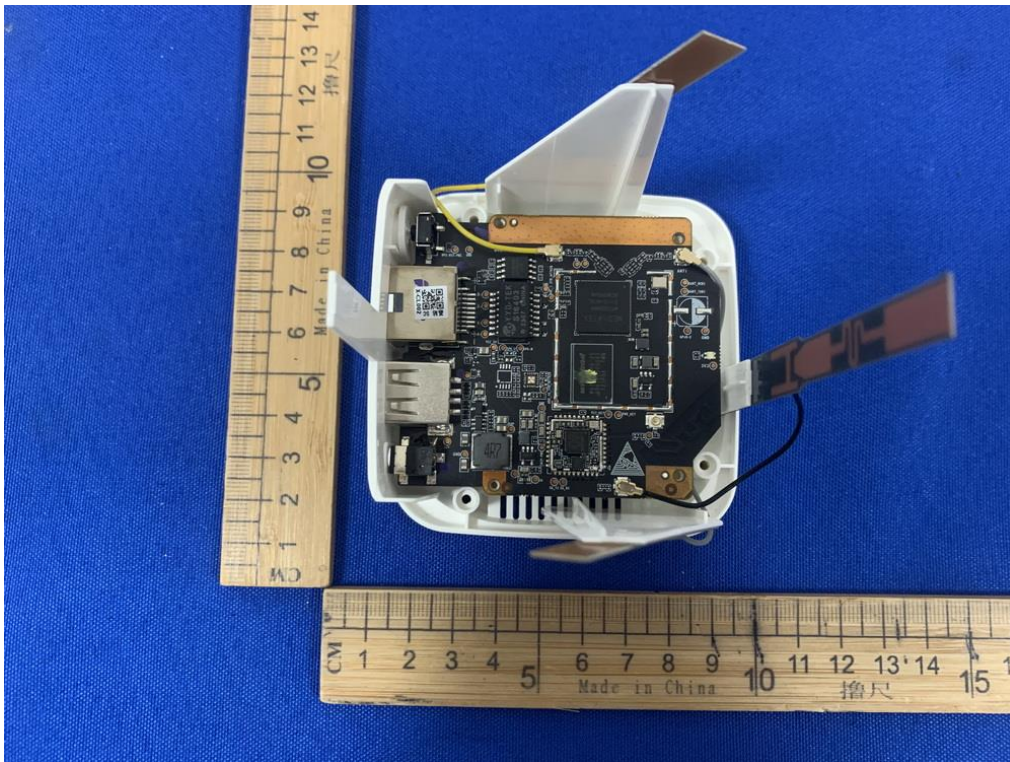
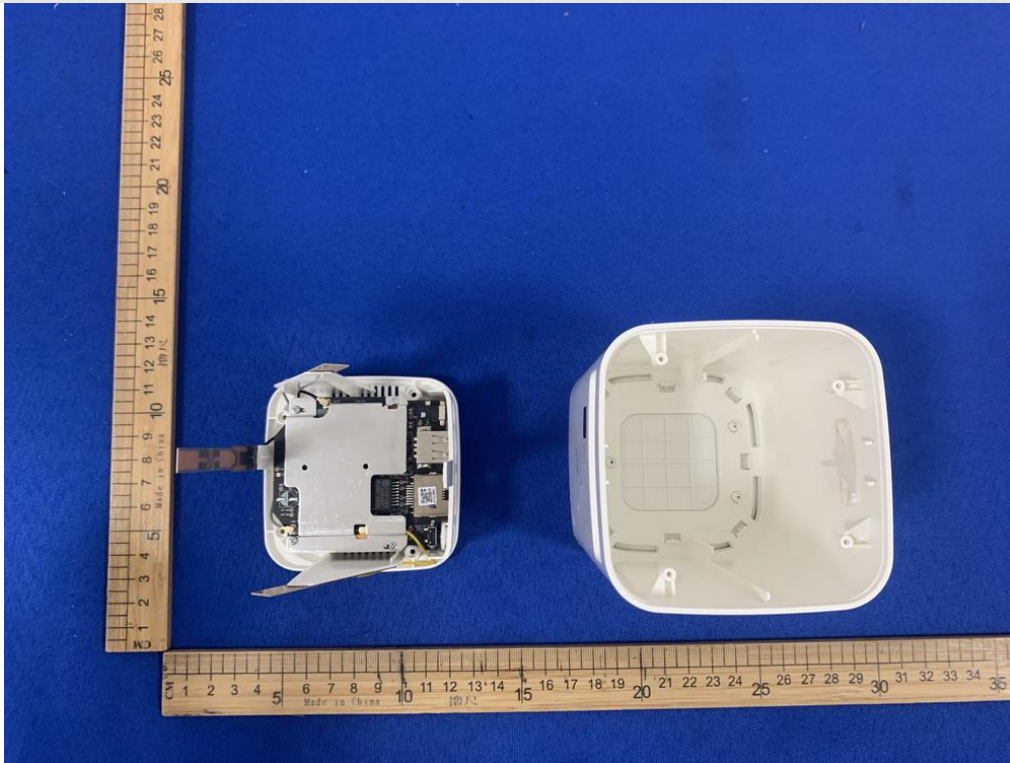




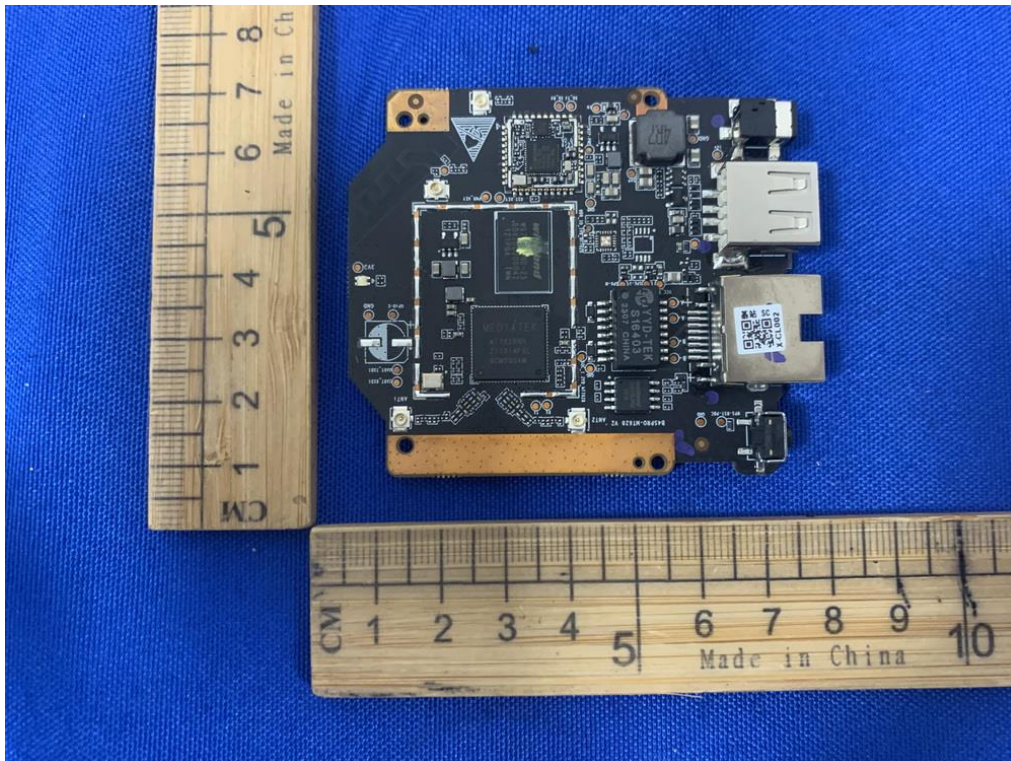
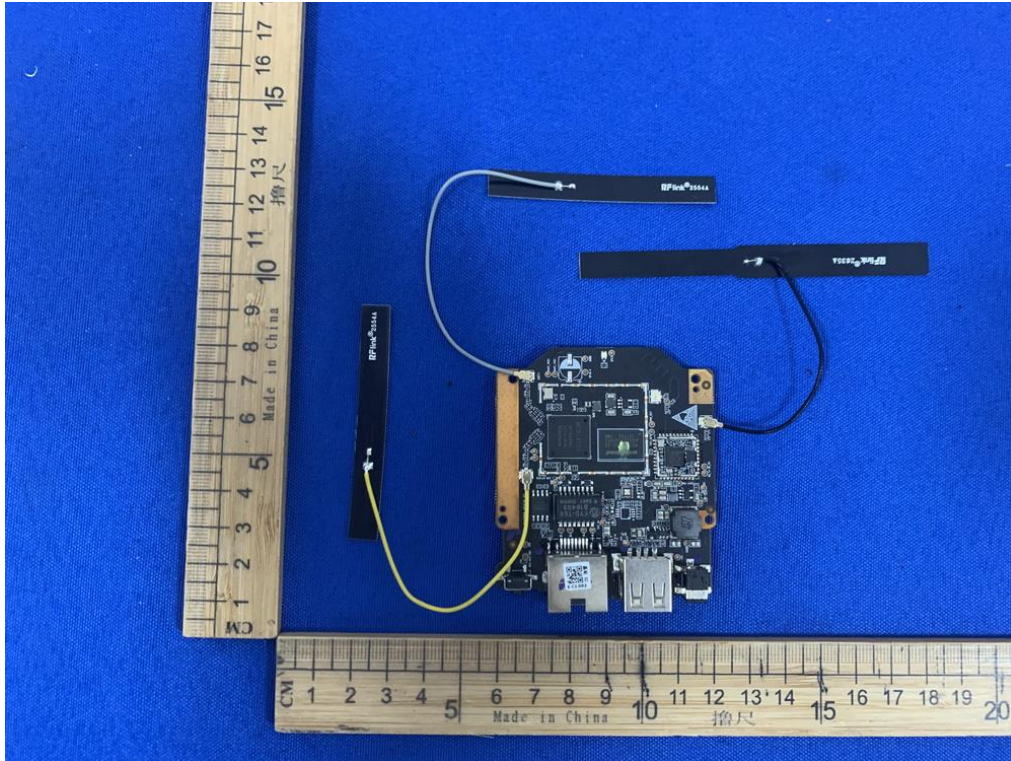




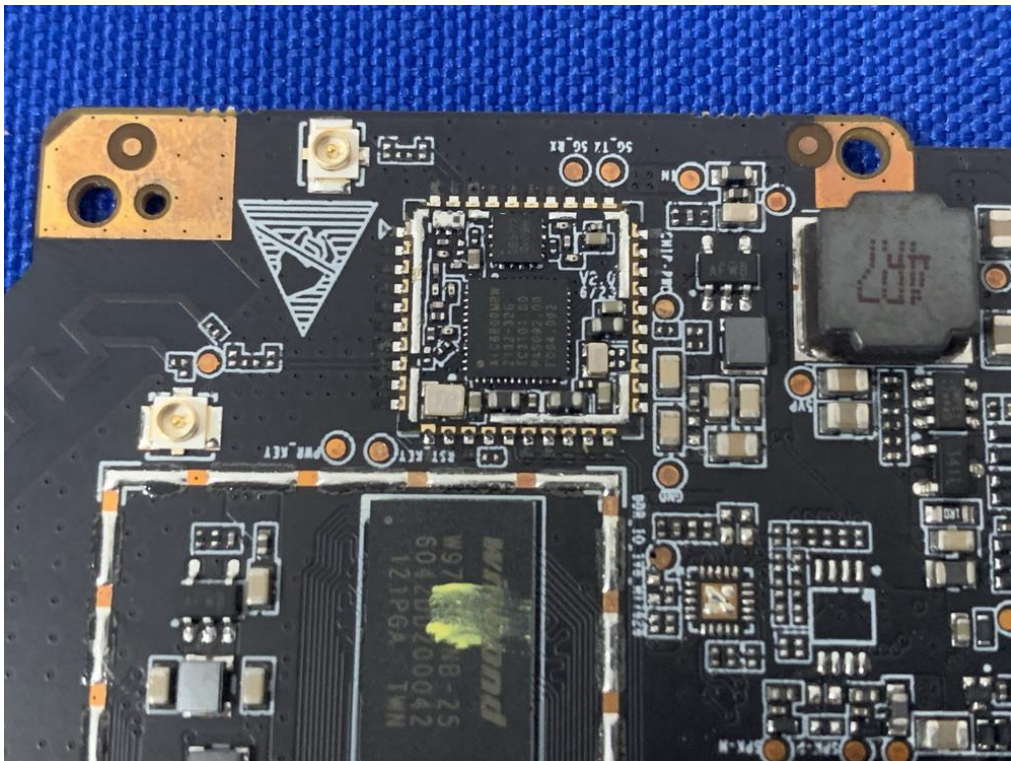
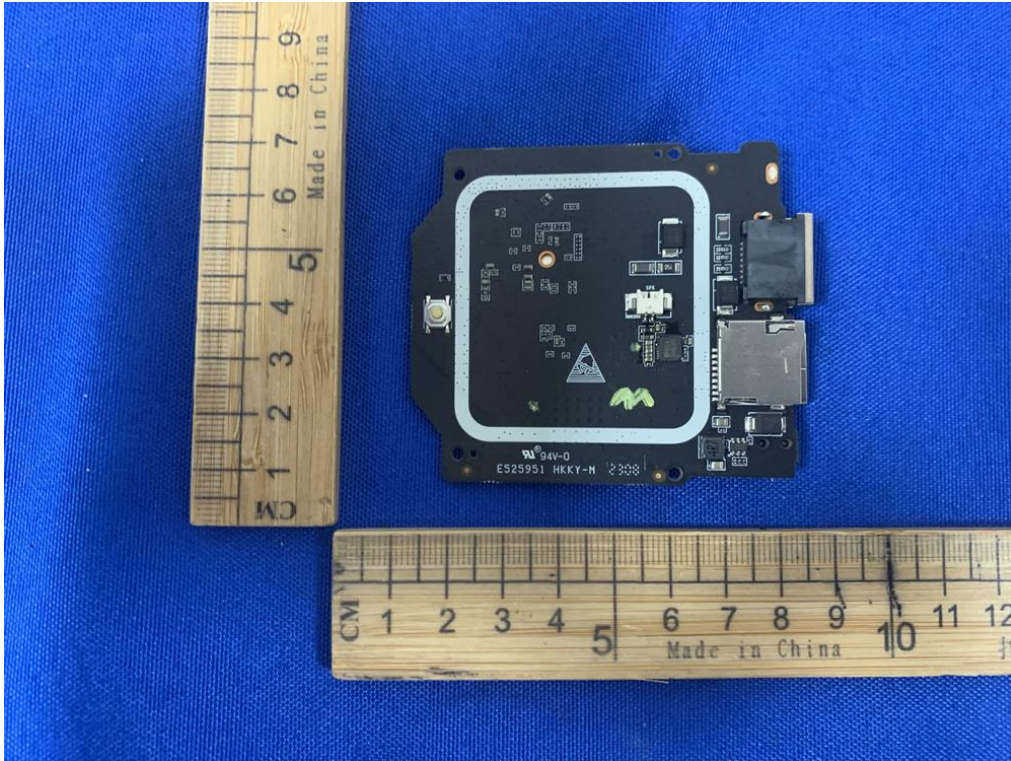
Internal











**END OF REPORT**